

**PHASE 2
PARKS BUILDING LEGEND**

402	CONCESSIONS PAVILION
20	FUTURE RECREATION CENTER
515-522	PAVILIONS (30'x30')

LEGEND

LB	LANDSCAPE BUFFER ESMT	EW	EDGE OF WATER	11.25' M.J. BEND	PROP ASPHALT PAVEMENT
CB	CATCH BASIN	VG	VALLEY GUTTER	22.5' M.J. BEND	PROP HEAVY DUTY ASPHALT PAVEMENT
CS	CONTROL STRUCTURE	HC	HANDICAP	45' M.J. BEND	PROP CONCRETE
SB	SITON BOTTOM INLET	HC	HANDICAP	90' M.J. BEND	
BU	BUBBLE UP	FD	PROP FLOW DIRECTION	RECREATION FIELD	
JB	JUNCTION BOX	SD	PROP SINGLE FLOW DIRECTION	COURT NUMBERING	
MS	MITERED END SECTION	SD	PROP DOUBLE FLOW DIRECTION	PS	RAMP STATION
VG	VALLEY GUTTER INLET	SG	PROP GRADE		
TI	THREAT INLET	EX	EX. GRADE		
TB	TOP OF BANK				
TOS	TOE OF SLOPE				

Revision	Date	Description	By
1	01/2022	REVISIONS PER COUNTY COMMENTS AND CLIENT REQUEST	KAM

DESIGNED BY: Ri
 DRAWN BY: KAM
 APPROVED: MJD
 JOB CODE: CCU215P2
 SCALE: 1" = 300'

GradyMinor
 Civil Engineers • Land Surveyors • Planners • Landscape Architects
 Cert. of Auth. EB 0005151 Cert. of Auth. LB 0005151
 Bonita Springs: 239.947.1144 www.GradyMinor.com Fort Myers: 239.690.4380

Q. Grady Minor and Associates, P.A.
 3800 Via Del Rey
 Bonita Springs, Florida 34134

**BIG CORKSCREW ISLAND REGIONAL PARK
 PHASE 2**

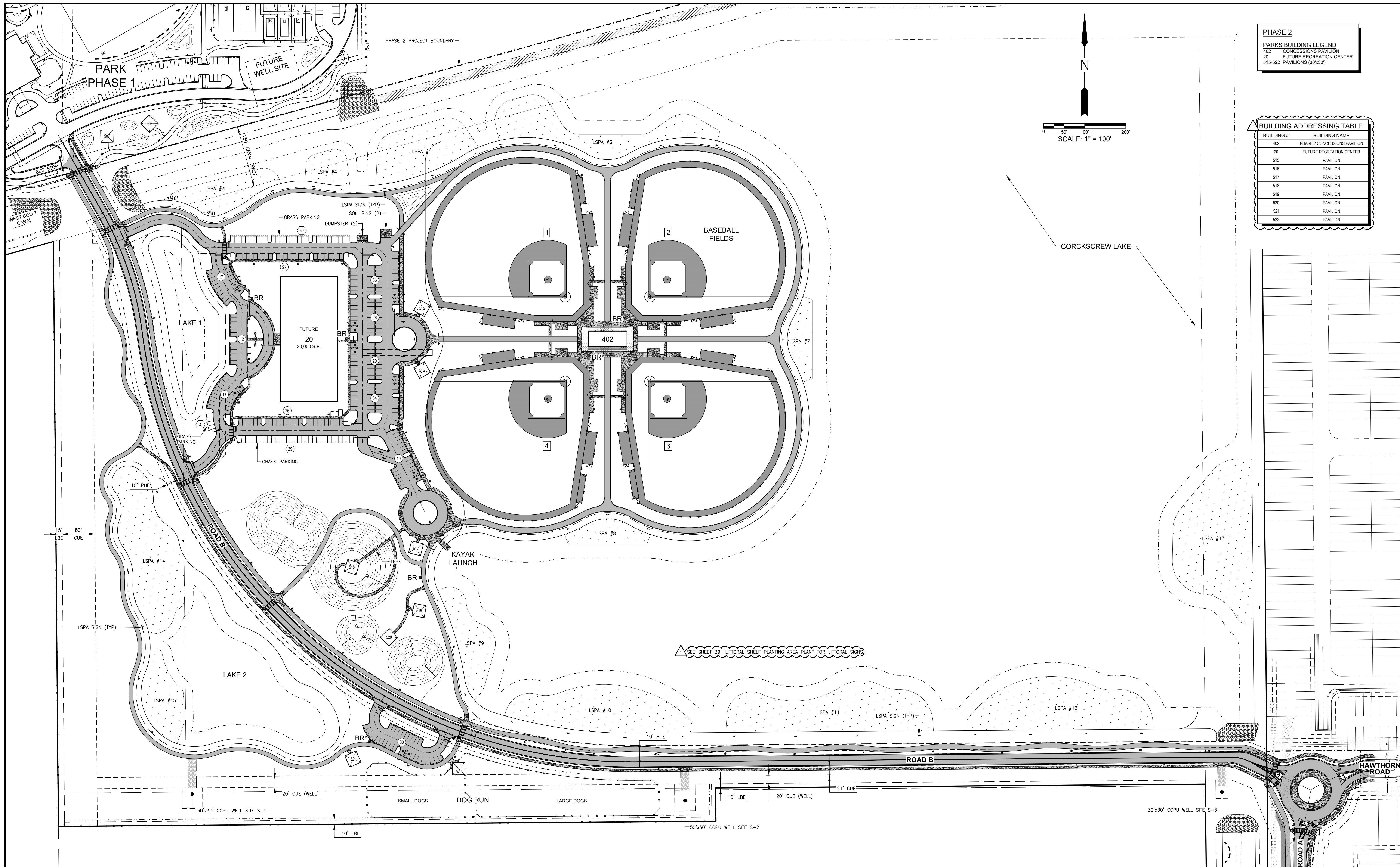
MASTER SITE PLAN

ELEVATIONS SHOWN HEREON ARE BASED UPON NORTH AMERICAN VERTICAL DATUM 1988 (NAVD '88)
 CONVERSION FACTOR TO NATIONAL GEODETIC VERTICAL DATUM 1929 (NGVD '29) IS (+)1.257'

MICHAEL J. DELATE, P.E.
 FLORIDA P.E. LICENSE NO. 49442

MUNICIPALITY: COLLIER COUNTY
 SEC./TOWNSHIP/RNG: 13, 14/48S/27E
 DATE: SEPTEMBER 2020
 SUBMITTAL TYPE: SDPA
 SHEET 2 OF 50

C:\ENGINEERING\PROJ-ENR\C\CCU215P2\DWGS\SUBMITTAL\TYPE\SDPA\CCU215P2-SDPA-MSE.DWG 1/28/2022 2:07 PM



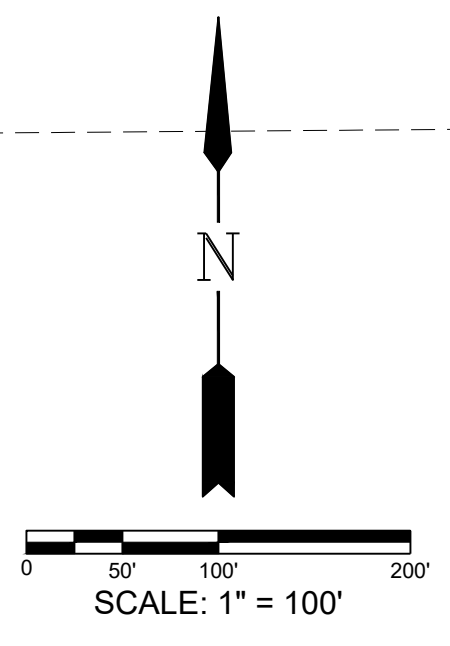
PHASE 2

PARKS BUILDING LEGEND

402	CONCESSIONS PAVILION
20	FUTURE RECREATION CENTER
515-522	PAVILIONS (30'x30')

BUILDING ADDRESSING TABLE

BUILDING #	BUILDING NAME
402	PHASE 2 CONCESSIONS PAVILION
20	FUTURE RECREATION CENTER
515	PAVILION
516	PAVILION
517	PAVILION
518	PAVILION
519	PAVILION
520	PAVILION
521	PAVILION
522	PAVILION



SEE SHEET 39 "LITTORAL SHELF PLANTING AREA PLAN" FOR LITTORAL SIGNS

LEGEND

	PROP. ASPHALT PAVEMENT (ROADWAY/MULTI-USE PATH)	#	FIELD NUMBER
	PROP. SIDEWALK/CONCRETE	BR	BIKE RACK
		#	PAVED PARKING COUNT
		#	GRASS PARKING COUNT

Revision	Date	Description	By
1	01/2022	REVISIONS PER COUNTY COMMENTS AND CLIENT REQUEST	KAM

DESIGNED BY:	Ri
DRAWN BY:	KAM
APPROVED:	MJD
JOB CODE:	CCU215P2
SCALE:	1" = 100'

GradyMinor

Q. Grady Minor and Associates, P.A.
3800 Via Del Rey
Bonita Springs, Florida 34134

Civil Engineers • Land Surveyors • Planners • Landscape Architects
Cert. of Auth. EB 0005151 Cert. of Auth. LB 0005151
Business LC 26000266

Bonita Springs: 239.947.1144 www.GradyMinor.com Fort Myers: 239.690.4380

BIG CORKSCREW ISLAND REGIONAL PARK
PHASE 2

PARK SITE PLAN

ELEVATIONS SHOWN HEREON ARE BASED UPON NORTH AMERICAN VERTICAL DATUM 1988 (NAVD '88)
CONVERSION FACTOR TO NATIONAL GEODETIC VERTICAL DATUM 1929 (NGVD '29) IS (+)1.257'

MUNICIPALITY: COLLIER COUNTY
SEC./TOWNSHIP/RNG 13, 14/48S/27E
DATE: SEPTEMBER 2020
SUBMITTAL TYPE: SDPA

MICHAEL J. DELATE, P.E.
FLORIDA P.E. LICENSE NO. 49442

SHEET 10 OF 50

C:\ENGINEERING\PROJ-ENG\CCU215P2\DWGS\SUBMITTAL TYPE: SDPA\CCU215P2-SDPA-05E.DWG 1/28/2022 2:10 PM