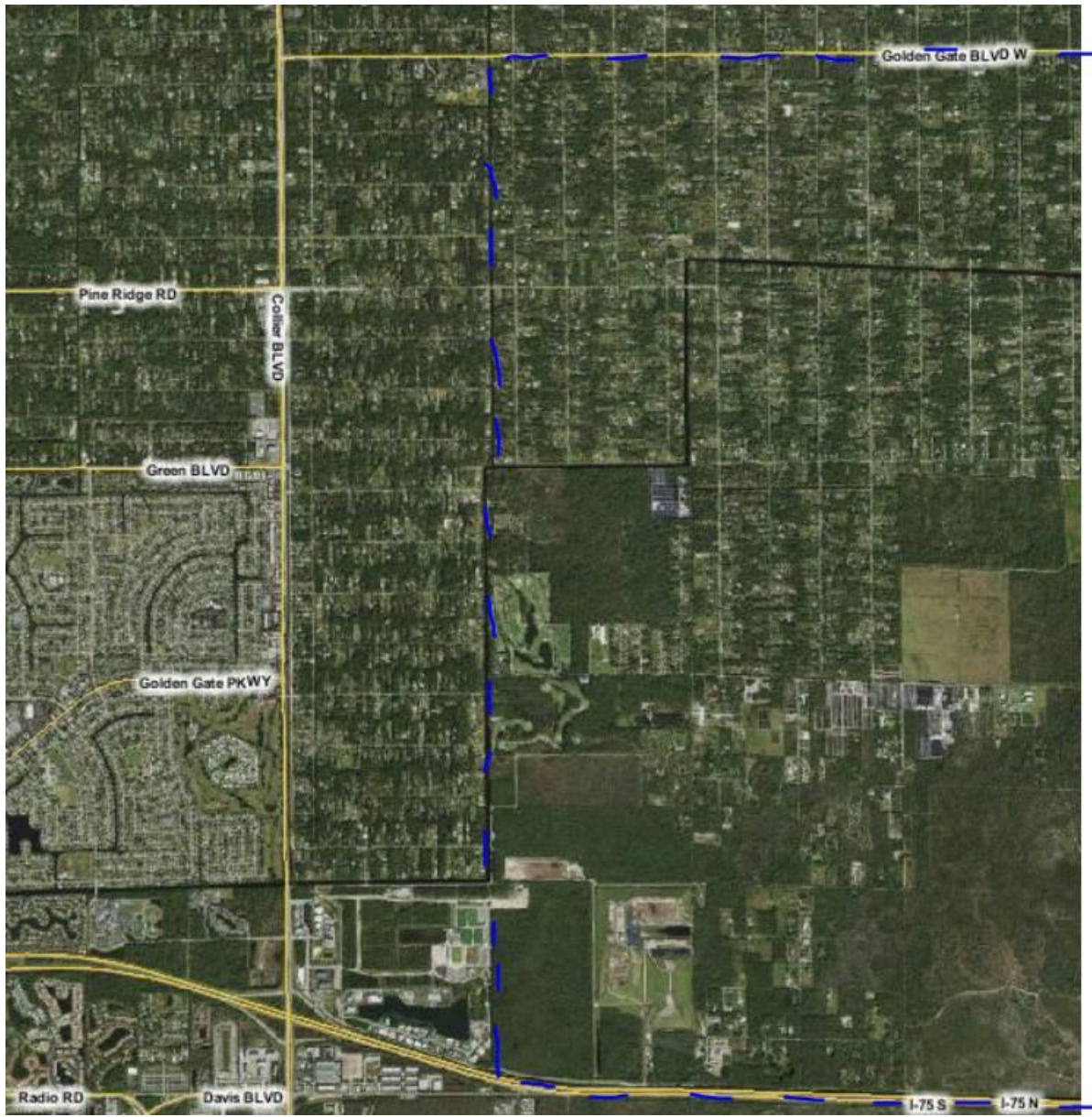
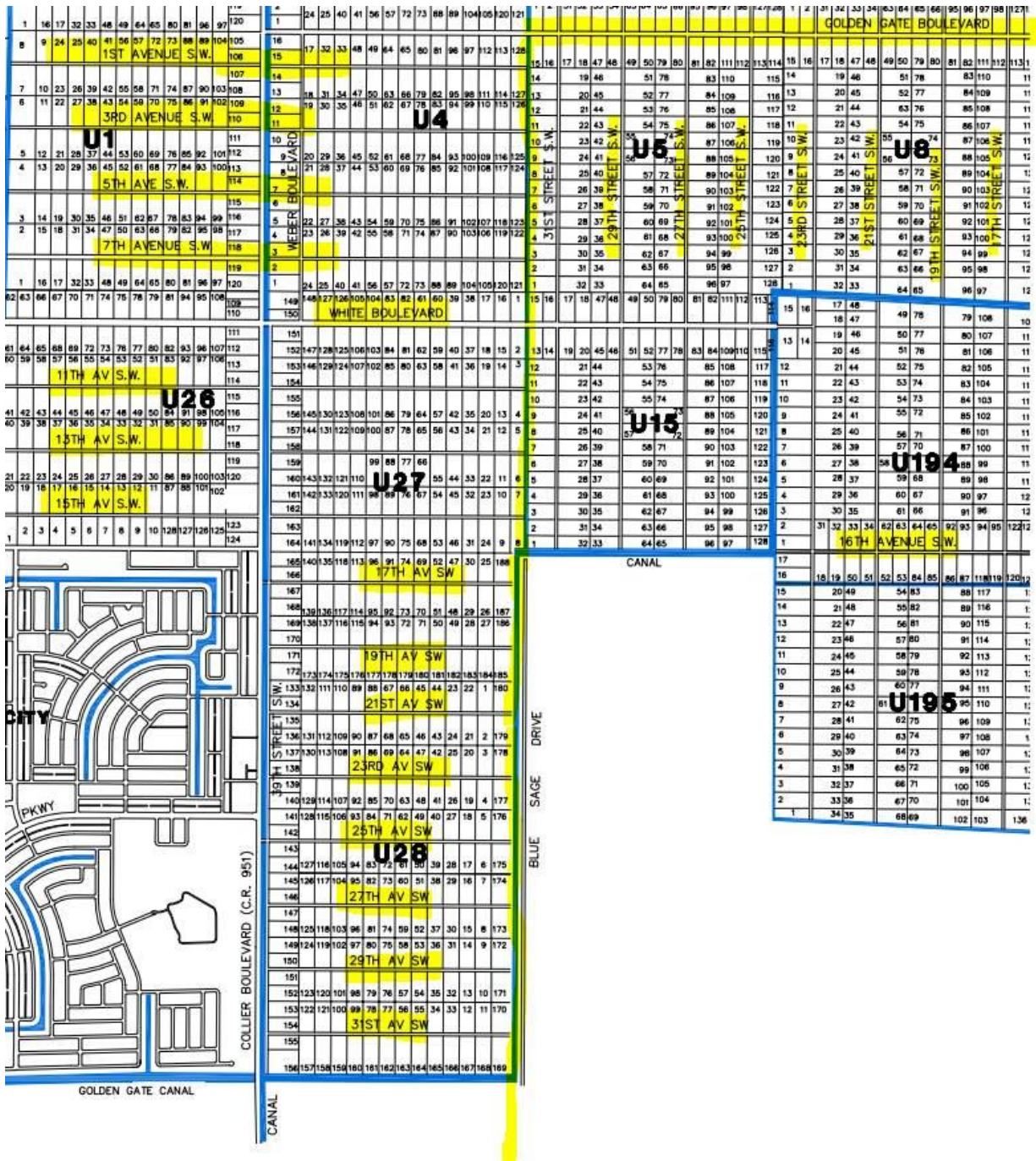


The boundary from Golden Gate Blvd. south to I-75 follows a canal for about 4 miles - thru Golden Gate Estates (GGE) for about 2 miles then on the east edge of GGE for about 2 miles (this is the canal on the east side of Big Cypress Elementary School); the last mile of that boundary runs along the east side of the original Citygate PUD and then the east side of White Lake Industrial Park PUD. Please see the below aerial with the District boundary in blue dashed line.

Also, below is an excerpt from the GGE Tract Map with the District boundary in yellow highlight and with the name of all avenues and streets highlighted. Attached is the PUD Map of western CC with the Map 2 boundaries overlaid. Does this help?





David Weeks, AICP
 BCC Redistricting Project Manager
 Senior Project Manager, Nova Engineering & Environmental LLC
 Collier County Growth Management Department contract employee
 2800 North Horseshoe Drive
 Naples, FL 34104
 Phone: 239-252-2305
 Email: david.weeks@colliercountyfl.gov
 Collier County Website: www.colliercountyfl.gov
 Redistricting Webpage (NEW AS OF 11/3/21):
<https://www.colliercountyfl.gov/government/growth-management/divisions/planning-and-zoning-division/2021-collier-county-bcc-redistricting-information>

