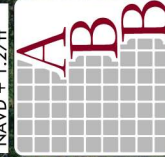
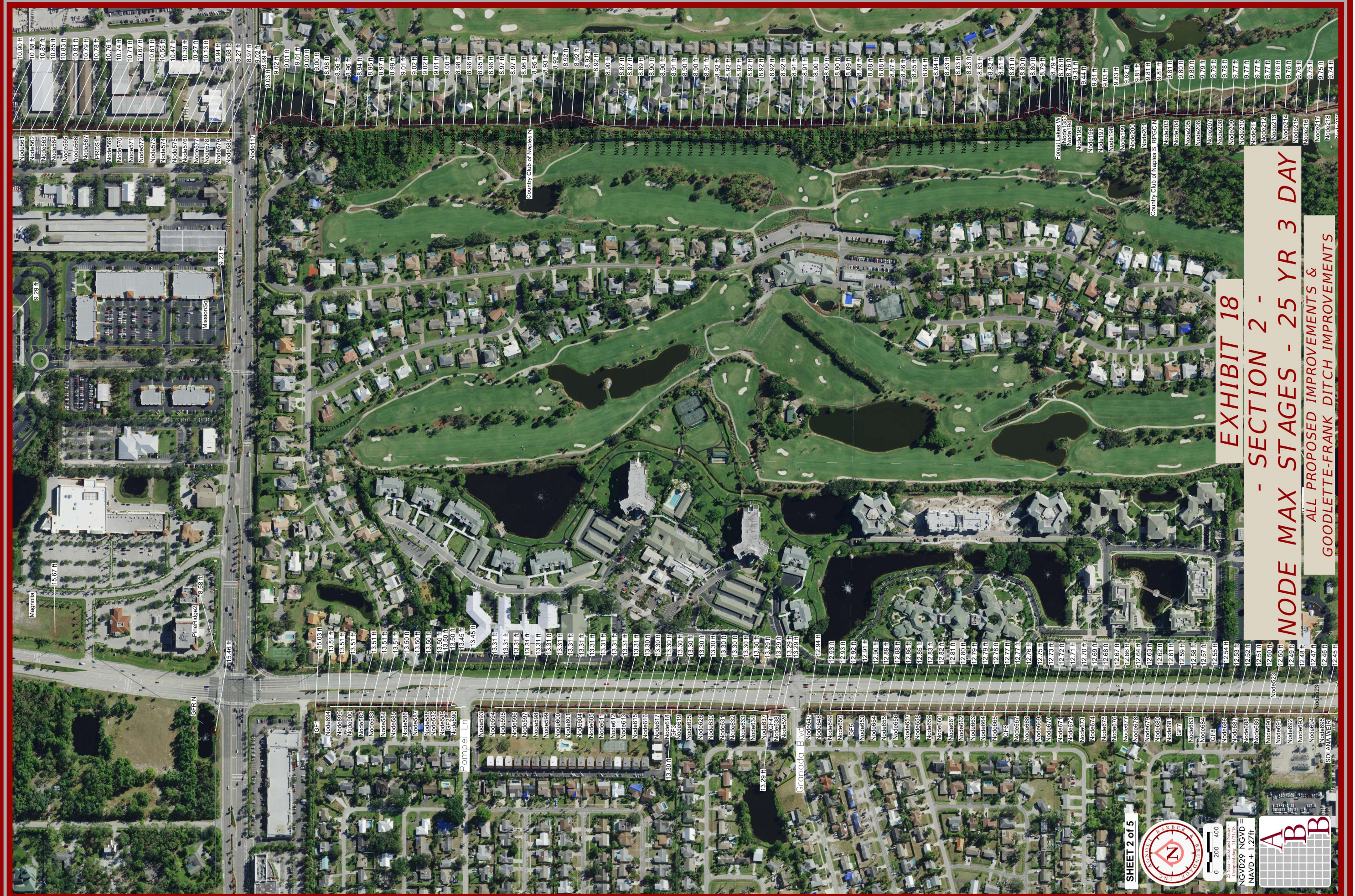


EXHIBIT 18

**- SECTION 1 -
NODE MAX STAGES - 25 YR 3 DAY**

ALL PROPOSED IMPROVEMENTS &
GOODLETTE-FRANK DITCH IMPROVEMENTS





Nodes 561 to 580: 10.90 ft to 9.68 ft
 Nodes 581 to 600: 9.02 ft to 8.92 ft
 Nodes 601 to 620: 9.01 ft to 8.90 ft
 Nodes 621 to 640: 8.98 ft to 8.87 ft
 Nodes 641 to 660: 8.99 ft to 8.88 ft
 Nodes 661 to 680: 8.85 ft to 8.74 ft
 Nodes 681 to 700: 8.81 ft to 8.70 ft
 Nodes 701 to 720: 8.80 ft to 8.69 ft
 Nodes 721 to 740: 8.79 ft to 8.68 ft
 Nodes 741 to 760: 9.31 ft to 9.20 ft
 Nodes 761 to 780: 9.31 ft to 9.20 ft
 Nodes 781 to 800: 9.31 ft to 9.20 ft
 Nodes 801 to 820: 9.31 ft to 9.20 ft
 Nodes 821 to 840: 9.31 ft to 9.20 ft
 Nodes 841 to 860: 9.31 ft to 9.20 ft
 Nodes 861 to 880: 9.31 ft to 9.20 ft
 Nodes 881 to 900: 9.31 ft to 9.20 ft
 Nodes 901 to 920: 9.31 ft to 9.20 ft
 Nodes 921 to 940: 9.31 ft to 9.20 ft
 Nodes 941 to 960: 9.31 ft to 9.20 ft
 Nodes 961 to 980: 9.31 ft to 9.20 ft
 Nodes 981 to 1000: 9.31 ft to 9.20 ft

Nodes 884 to 903: 15.03 ft to 13.45 ft
 Nodes 904 to 923: 13.31 ft to 13.31 ft
 Nodes 924 to 943: 13.31 ft to 13.31 ft
 Nodes 944 to 963: 13.31 ft to 13.31 ft
 Nodes 964 to 983: 13.31 ft to 13.31 ft
 Nodes 984 to 1003: 13.31 ft to 13.31 ft
 Nodes 1004 to 1023: 13.31 ft to 13.31 ft
 Nodes 1024 to 1043: 13.31 ft to 13.31 ft
 Nodes 1044 to 1063: 13.31 ft to 13.31 ft
 Nodes 1064 to 1083: 13.31 ft to 13.31 ft
 Nodes 1084 to 1103: 13.31 ft to 13.31 ft
 Nodes 1104 to 1123: 13.31 ft to 13.31 ft
 Nodes 1124 to 1143: 13.31 ft to 13.31 ft
 Nodes 1144 to 1163: 13.31 ft to 13.31 ft
 Nodes 1164 to 1183: 13.31 ft to 13.31 ft
 Nodes 1184 to 1203: 13.31 ft to 13.31 ft
 Nodes 1204 to 1223: 13.31 ft to 13.31 ft
 Nodes 1224 to 1243: 13.31 ft to 13.31 ft
 Nodes 1244 to 1263: 13.31 ft to 13.31 ft
 Nodes 1264 to 1283: 13.31 ft to 13.31 ft
 Nodes 1284 to 1303: 13.31 ft to 13.31 ft
 Nodes 1304 to 1323: 13.31 ft to 13.31 ft
 Nodes 1324 to 1343: 13.31 ft to 13.31 ft
 Nodes 1344 to 1363: 13.31 ft to 13.31 ft
 Nodes 1364 to 1383: 13.31 ft to 13.31 ft
 Nodes 1384 to 1403: 13.31 ft to 13.31 ft
 Nodes 1404 to 1423: 13.31 ft to 13.31 ft
 Nodes 1424 to 1443: 13.31 ft to 13.31 ft
 Nodes 1444 to 1463: 13.31 ft to 13.31 ft
 Nodes 1464 to 1483: 13.31 ft to 13.31 ft
 Nodes 1484 to 1503: 13.31 ft to 13.31 ft
 Nodes 1504 to 1523: 13.31 ft to 13.31 ft
 Nodes 1524 to 1543: 13.31 ft to 13.31 ft
 Nodes 1544 to 1563: 13.31 ft to 13.31 ft
 Nodes 1564 to 1583: 13.31 ft to 13.31 ft
 Nodes 1584 to 1603: 13.31 ft to 13.31 ft
 Nodes 1604 to 1623: 13.31 ft to 13.31 ft
 Nodes 1624 to 1643: 13.31 ft to 13.31 ft
 Nodes 1644 to 1663: 13.31 ft to 13.31 ft
 Nodes 1664 to 1683: 13.31 ft to 13.31 ft
 Nodes 1684 to 1703: 13.31 ft to 13.31 ft
 Nodes 1704 to 1723: 13.31 ft to 13.31 ft
 Nodes 1724 to 1743: 13.31 ft to 13.31 ft
 Nodes 1744 to 1763: 13.31 ft to 13.31 ft
 Nodes 1764 to 1783: 13.31 ft to 13.31 ft
 Nodes 1784 to 1803: 13.31 ft to 13.31 ft
 Nodes 1804 to 1823: 13.31 ft to 13.31 ft
 Nodes 1824 to 1843: 13.31 ft to 13.31 ft
 Nodes 1844 to 1863: 13.31 ft to 13.31 ft
 Nodes 1864 to 1883: 13.31 ft to 13.31 ft
 Nodes 1884 to 1903: 13.31 ft to 13.31 ft
 Nodes 1904 to 1923: 13.31 ft to 13.31 ft
 Nodes 1924 to 1943: 13.31 ft to 13.31 ft
 Nodes 1944 to 1963: 13.31 ft to 13.31 ft
 Nodes 1964 to 1983: 13.31 ft to 13.31 ft
 Nodes 1984 to 2003: 13.31 ft to 13.31 ft

EXHIBIT 18
SECTION 2 -
NODE MAX STAGES - 25 YR 3 DAY

ALL PROPOSED IMPROVEMENTS &
 GOODLETTE-FRANK DITCH IMPROVEMENTS

SHEET 2 of 5



0 200 400
 2 1/2 Year 15-Min and 24-Hour
 NGVD29 NGVD =
 NAVD + 1.27 ft

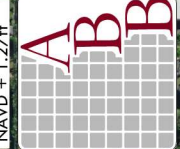




EXHIBIT 18

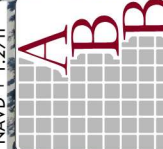
NODE MAX STAGES - 25 YR 3 DAY

ALL PROPOSED IMPROVEMENTS & GOODLETTE-FRANK DITCH IMPROVEMENTS

SHEET 3 of 5



25 Year Time and Nodes
 NGVD29 NGVD =
 NAVD + 1.27ft



0 200 400

11/21/18



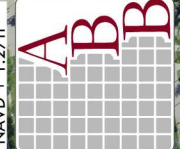
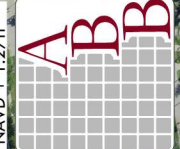
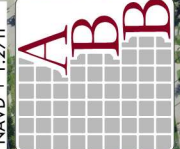
- Node 891 6.71 ft
- Node 892 6.75 ft
- Node 893 6.74 ft
- Node 894 6.72 ft
- Node 895 6.71 ft
- Node 896 6.68 ft
- Node 897 6.69 ft
- Node 898 6.65 ft
- Node 899 6.59 ft
- Node 900 6.55 ft
- Node 901 6.49 ft
- Node 902 6.46 ft
- Node 903 6.45 ft
- Node 904 6.41 ft
- Node 905 6.37 ft
- Node 906 6.34 ft
- Node 907 6.32 ft
- Node 908 6.28 ft
- Node 909 6.25 ft
- Node 910 6.23 ft
- Node 911 6.21 ft
- Node 912 6.19 ft
- Node 913 6.17 ft
- Node 914 6.13 ft
- Node 915 6.10 ft
- Node 916 6.07 ft
- Node 917 6.03 ft
- Node 918 6.00 ft
- Node 919 5.97 ft
- Node 920 5.94 ft
- Node 921 5.91 ft
- Node 922 5.87 ft
- Node 923 5.83 ft
- Node 924 5.79 ft
- Node 925 5.74 ft
- Node 926 5.70 ft
- Node 927 5.65 ft
- Node 928 5.60 ft
- Node 929 5.57 ft
- Node 930 5.53 ft
- Node 931 5.44 ft
- Node 932 5.36 ft
- Node 933 5.29 ft
- Node 934 5.21 ft
- Node 935 5.23 ft
- Node 936 5.27 ft
- Node 937 5.23 ft
- Node 938 5.16 ft
- Node 939 5.13 ft
- Node 940 5.05 ft

EXHIBIT 18
- SECTION 4 -
NODE MAX STAGES - 25 YR 3 DAY
ALL PROPOSED IMPROVEMENTS &
GOODLETTE-FRANK DITCH IMPROVEMENTS

SHEET 4 of 5



25 Year Limits and Nodes
 Compulsory 11/23/18
 NGVD29 NGVD =
 NAVD + 1.27ft



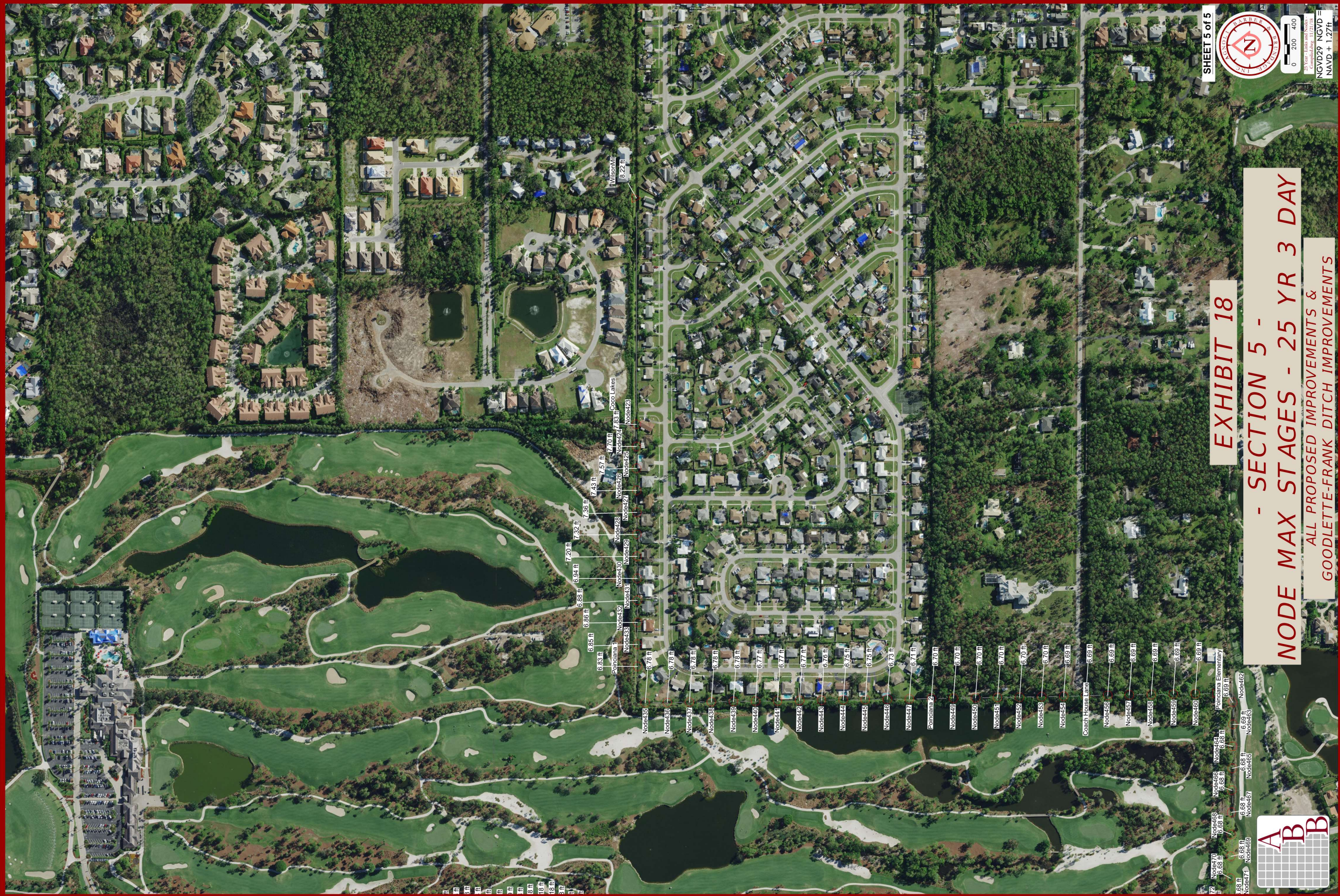


EXHIBIT 18

**- SECTION 5 -
NODE MAX STAGES - 25 YR 3 DAY**

**ALL PROPOSED IMPROVEMENTS &
GOODLETTE-FRANK DITCH IMPROVEMENTS**

SHEET 5 of 5



15 Year Link with Node
Completed Date: 11/21/18
NGVD29 NGVD =
NAVD + 1.27ft

