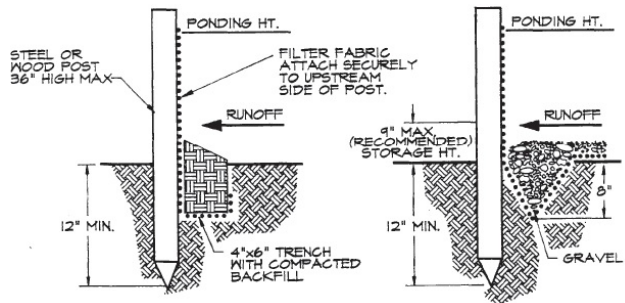


NOTICE TO OWNER-BUILDERS

Protecting our waterways begins at your home. Use best management practices (BMP's) to minimize the amount of sediment, chemicals, and debris in your stormwater runoff.



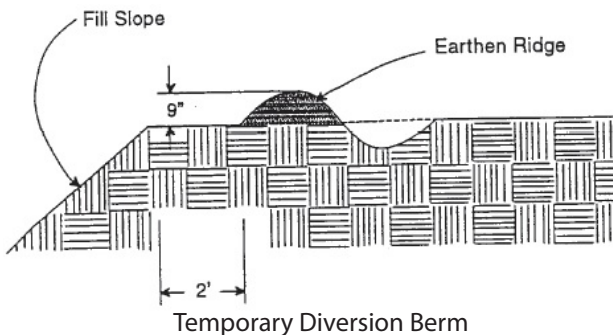
Drop Inlet Protection



STANDARD DETAIL

ALTERNATE DETAIL

Proper Silt Fence Installation Diagram



Temporary Diversion Berm

CONSTRUCTION SITE BEST MANAGEMENT PRACTICES (BMP'S)

- Install sediment and erosion control devices prior to beginning construction, demolition, renovation, alteration, stockpiling of fill, lot clearing, or grading.
- Preserve existing trees and grass where possible; re-vegetate as soon as possible.
- Place soil piles away from roads and waterways, cover with plastic when not actively working.
- Use stone/rock driveways to minimize the tracking of dirt onto streets; don't block roadside swales.
- Protect onsite storm sewers with straw bales, silt fences, or equivalent measures.
- Store hazardous materials in sealed containers and ensure that the container is not leaking.
- Dispose of water from dewatering or concrete wash water to a pervious area where the water will NOT drain into the stormwater system. Properly dispose of remaining cement or sediment.
- Check BMP's periodically and after rain, repair as needed. Install additional BMPs if current set up is not effective.
- Remove sediment from street daily or as needed to prevent impacts to traffic and the stormwater system.

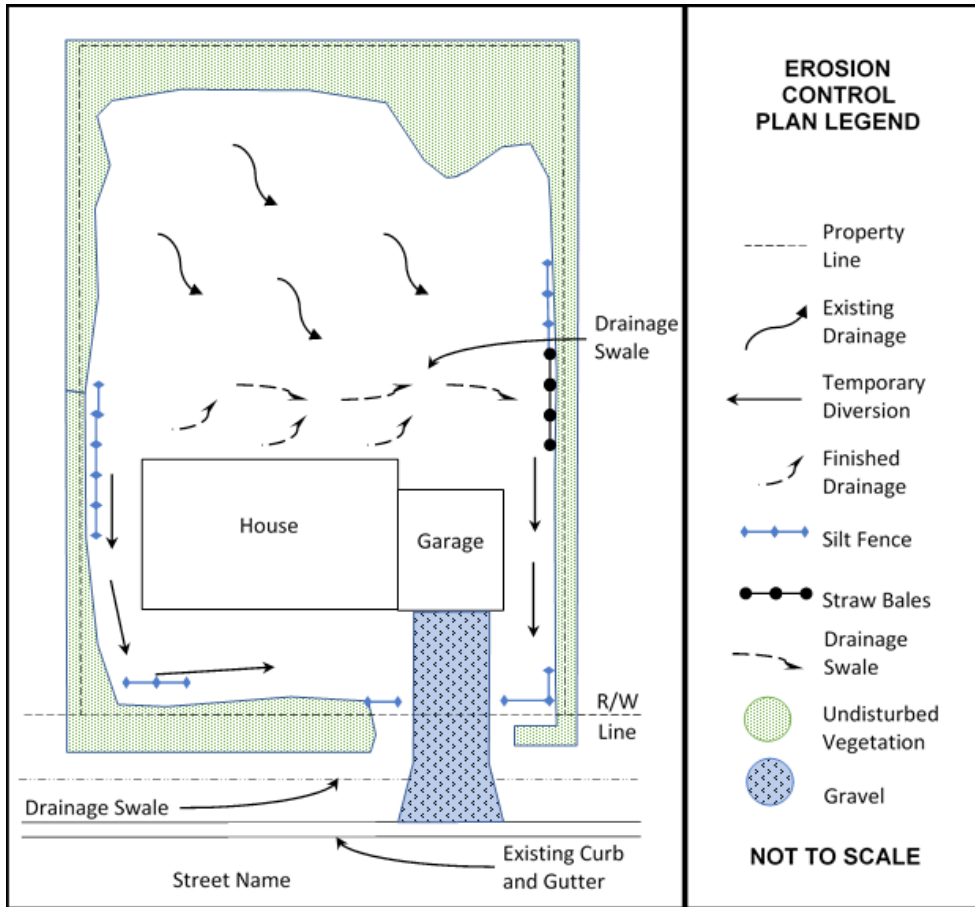
Live Green. Save Blue. Report Pollution.



Collier County™

POLLUTION CONTROL

LIVE GREEN. SAVE BLUE.



BASIC SITE MAP OF SEDIMENT AND EROSION CONTROL FOR SINGLE-FAMILY HOME

Disclaimer: This example shows common site conditions using conventional BMPs. Apply additional measures as needed to be effective.

Keywords to find more about BMPs include:

- Sediment control
- Erosion control
- Construction BMP

POLLUTION PREVENTION BEGINS IN YOUR OWN YARD!



Avoid Blocking Roadside Drainage



Avoid Leaving Hazardous Materials Unsecured

Live Green. Save Blue. Report Pollution.

239-252-2502 | pollution_control@colliercountyfl.gov
www.LiveGreenSaveBlue.com