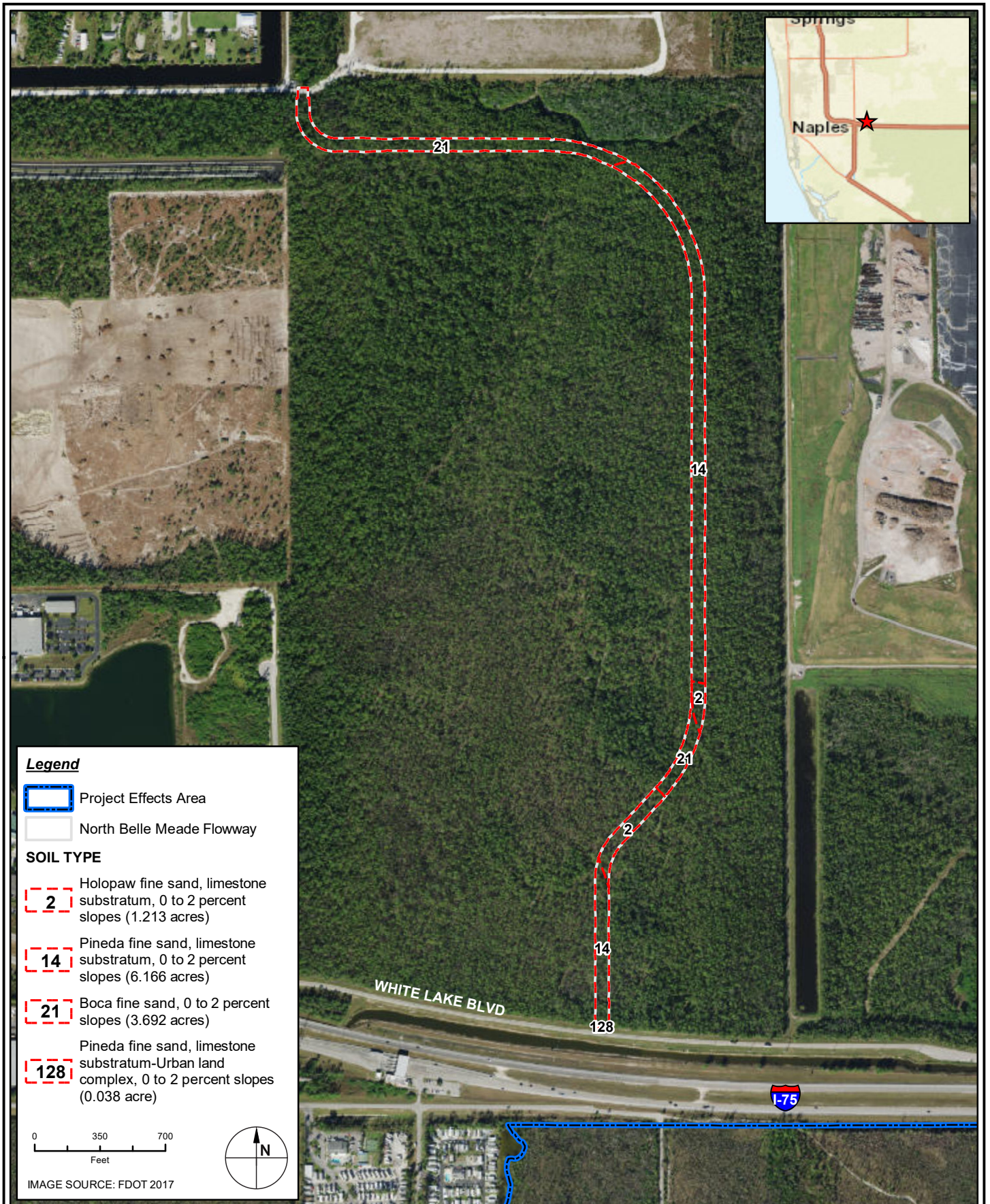




DRAFT BIOLOGICAL ASSESSMENT

**COLLIER COUNTY
COMPREHENSIVE WATERSHED IMPROVEMENT PLAN
COLLIER COUNTY, FLORIDA**

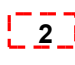

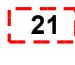

**APPENDIX I: NATURAL RESOURCES CONSERVATION SERVICE (NRCS)
SOILS MAPS – PROJECT CONSTRUCTION AREAS**



Legend

-  Project Effects Area
-  North Belle Meade Flowway

SOIL TYPE

-  Holopaw fine sand, limestone substratum, 0 to 2 percent slopes (1.213 acres)
-  Pineda fine sand, limestone substratum, 0 to 2 percent slopes (6.166 acres)
-  Boca fine sand, 0 to 2 percent slopes (3.692 acres)
-  Pineda fine sand, limestone substratum-Urban land complex, 0 to 2 percent slopes (0.038 acre)

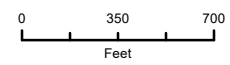
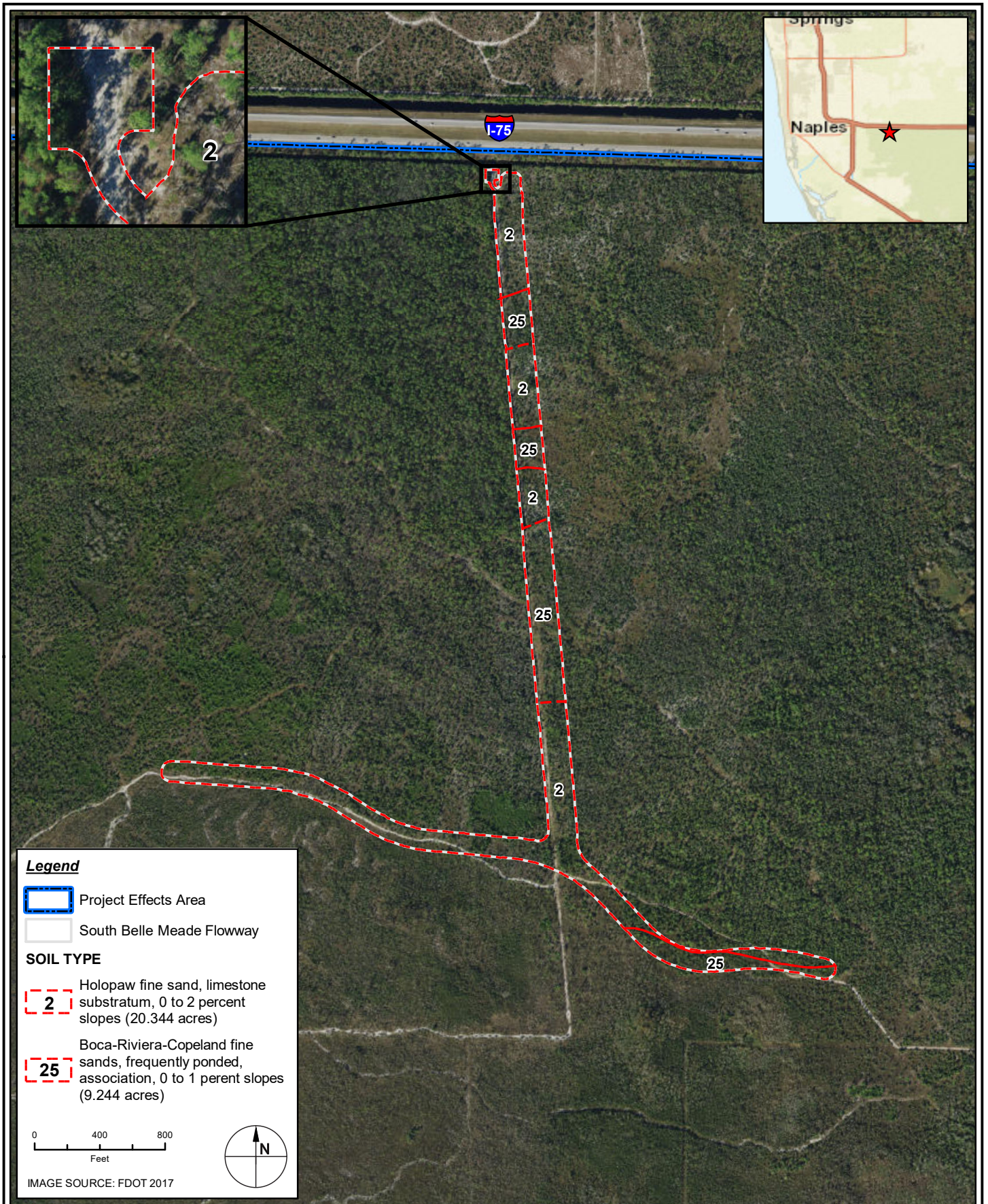



IMAGE SOURCE: FDOT 2017

TAYLOR ENGINEERING INC.
 10199 SOUTHSIDE BOULEVARD
 SUITE 310
 JACKSONVILLE, FL 32256
 CERTIFICATE OF AUTHORIZATION # 4815

APPENDIX I
 FIGURE 1
 NORTH BELLE MEADE FLOWWAY - NRCS SOILS MAP
 COLLIER COUNTY CWIP
 COLLIER COUNTY, FLORIDA

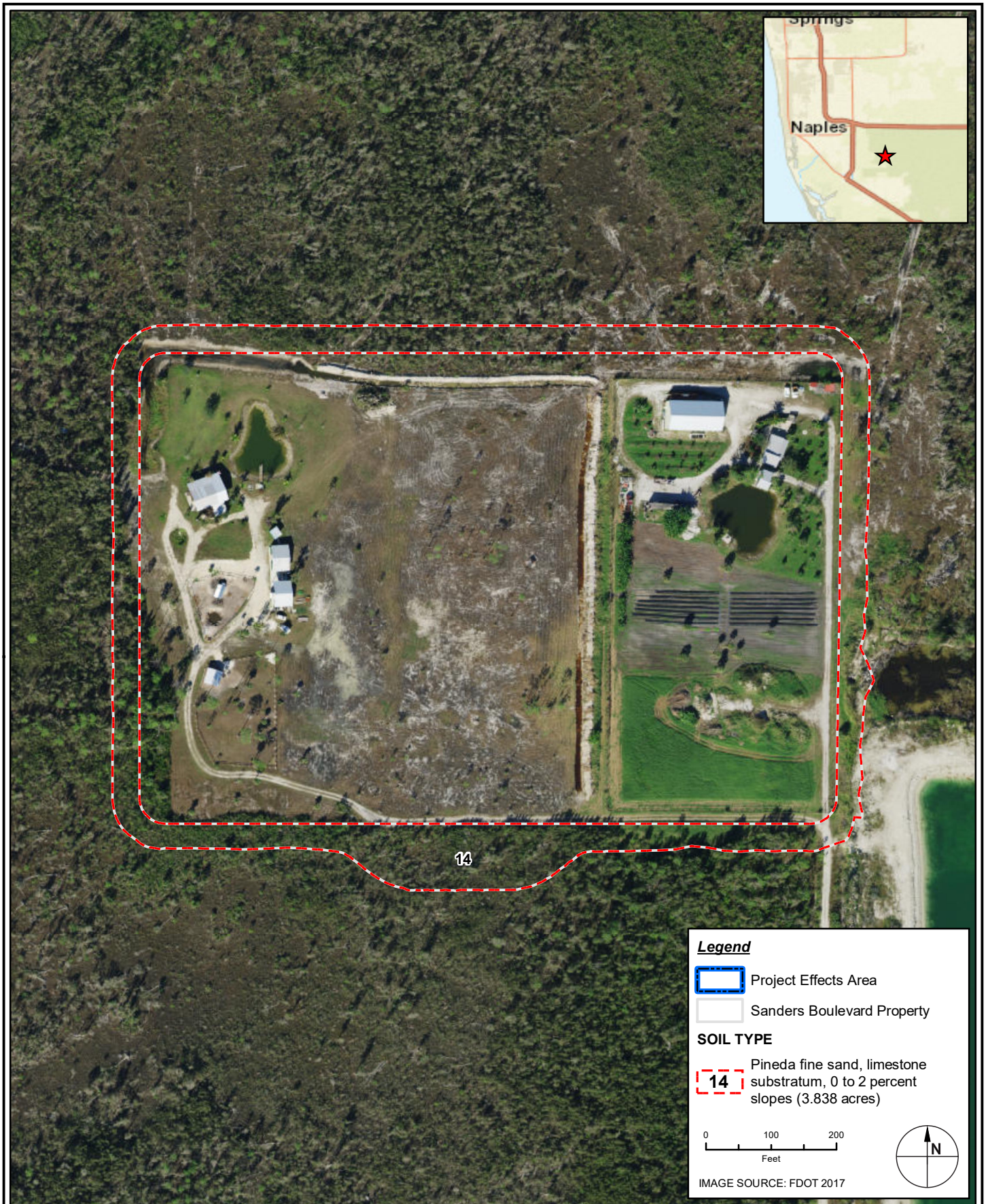
PROJECT	C2018-052
DRAWN BY	KM
SHEET	
DATE	APR 2020




 **TAYLOR ENGINEERING INC.**
 10199 SOUTHSIDE BOULEVARD
 SUITE 310
 JACKSONVILLE, FL 32256
 CERTIFICATE OF AUTHORIZATION # 4815

APPENDIX I
 FIGURE 2
 SOUTH BELLE MEADE FLOWWAY - NRCS SOILS MAP
 COLLIER COUNTY CWIP
 COLLIER COUNTY, FLORIDA

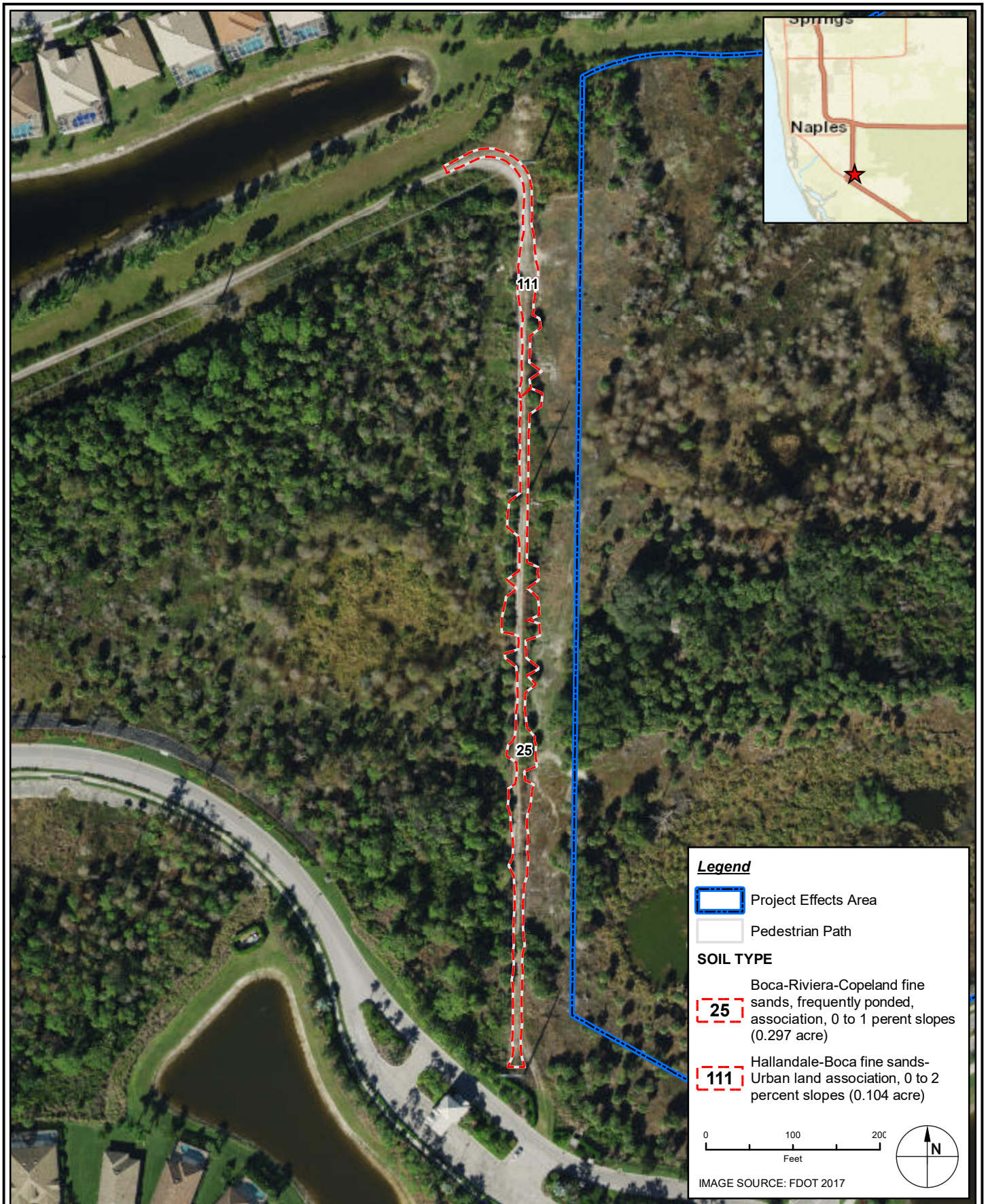
PROJECT	C2018-052
DRAWN BY	KM
SHEET	
DATE	APR 2020




 **TAYLOR ENGINEERING INC.**
 10199 SOUTHSIDE BOULEVARD
 SUITE 310
 JACKSONVILLE, FL 32256
 CERTIFICATE OF AUTHORIZATION # 4815

APPENDIX I
 FIGURE 3
 SANDERS BOULEVARD PROPERTY - NRCS SOILS MAP
 COLLIER COUNTY CWIP
 COLLIER COUNTY, FLORIDA

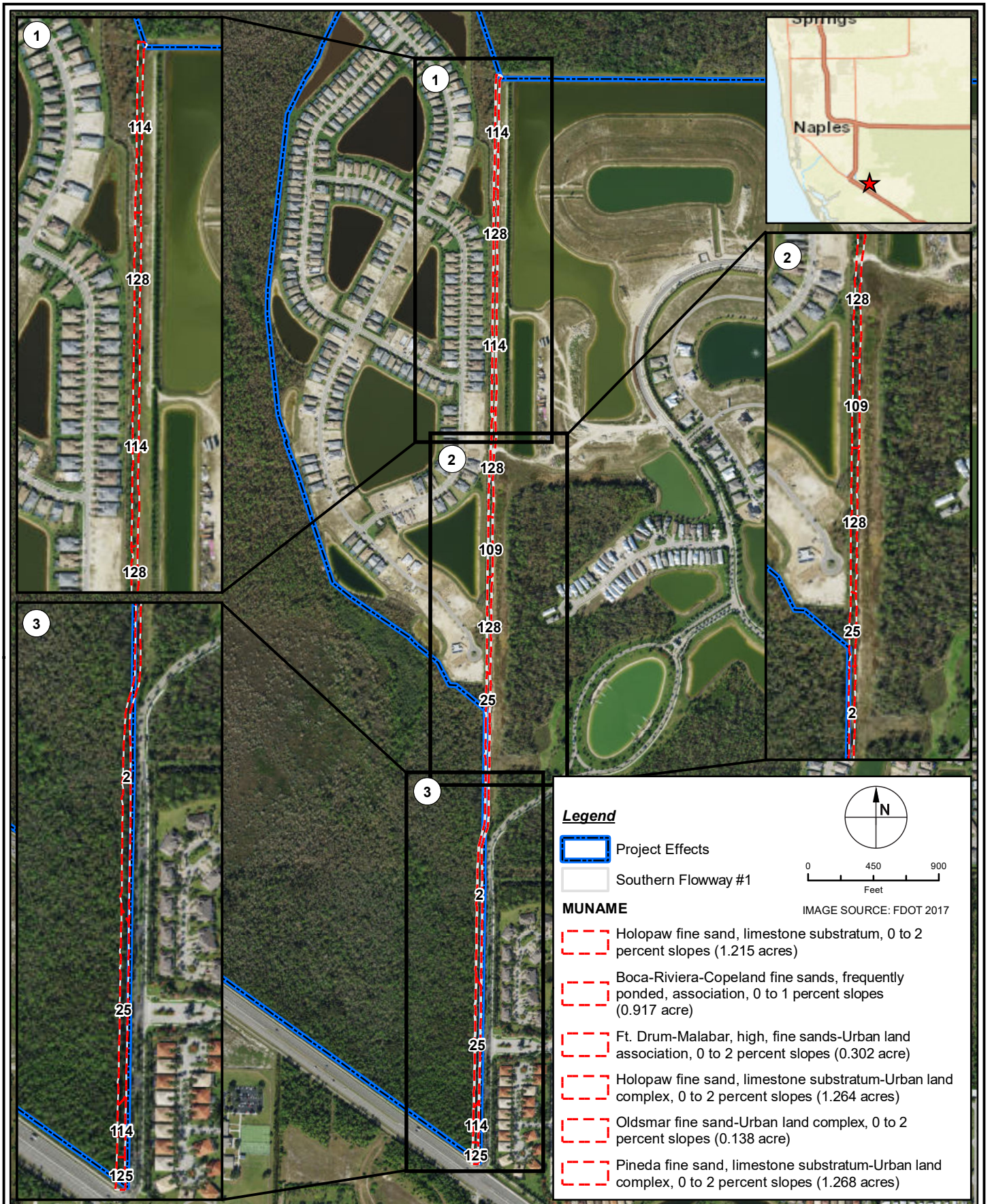
PROJECT	C2018-052
DRAWN BY	KM
SHEET	
DATE	APR 2020






TAYLOR ENGINEERING INC.
 10199 SOUTHSIDE BOULEVARD
 SUITE 310
 JACKSONVILLE, FL 32256
 CERTIFICATE OF AUTHORIZATION # 4815

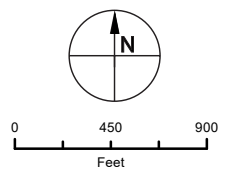
APPENDIX I
 FIGURE 4
 PEDESTRIAN PATH - NRCS SOILS MAP
 COLLIER COUNTY CWIP
 COLLIER COUNTY, FLORIDA

PROJECT	C2018-052
DRAWN BY	KM
SHEET	
DATE	APR 2020



Legend

-  Project Effects
-  Southern Flowway #1



MUNAME








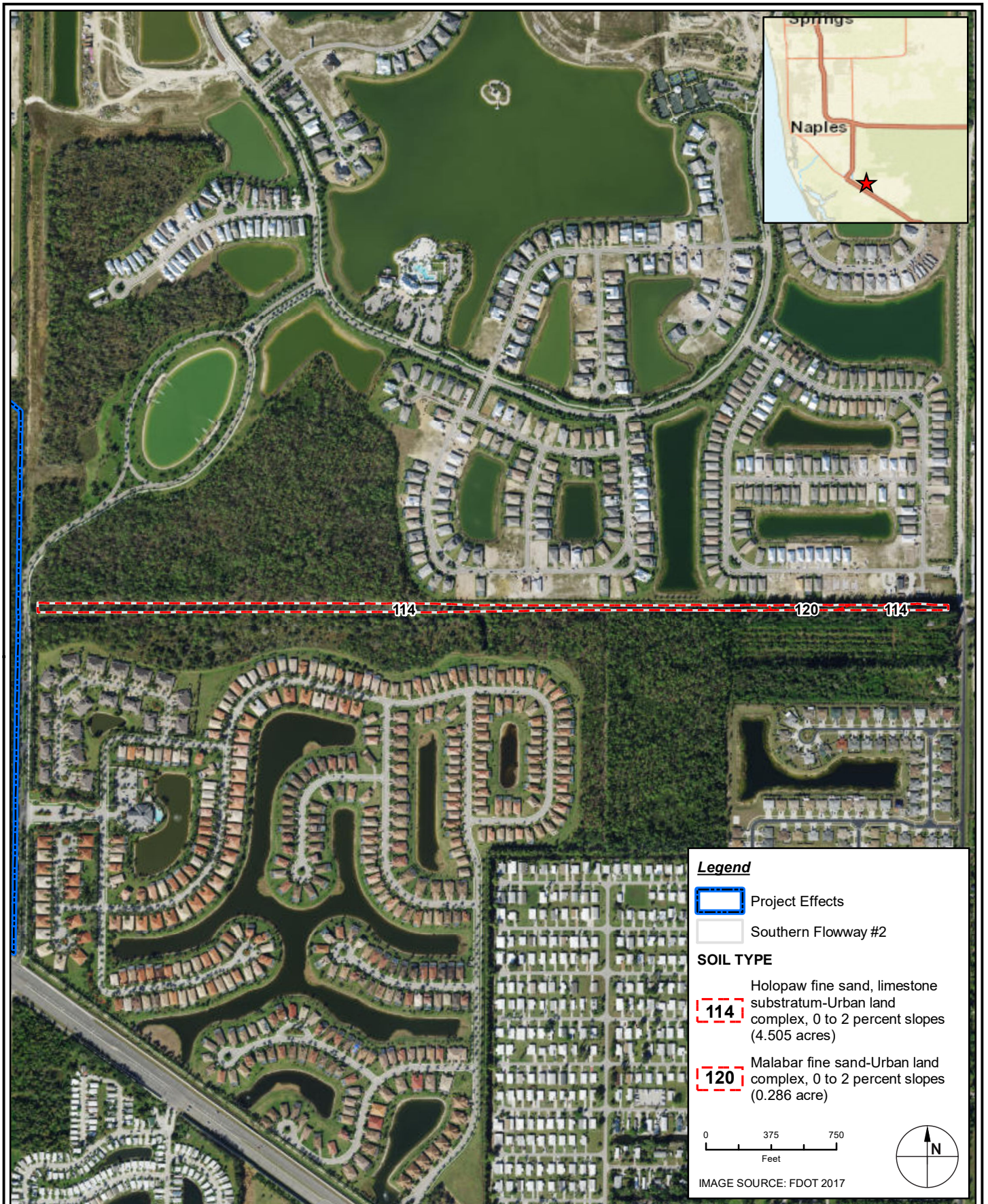
-  Holopaw fine sand, limestone substratum, 0 to 2 percent slopes (1.215 acres)
-  Boca-Riviera-Copeland fine sands, frequently ponded, association, 0 to 1 percent slopes (0.917 acre)
-  Ft. Drum-Malabar, high, fine sands-Urban land association, 0 to 2 percent slopes (0.302 acre)
-  Holopaw fine sand, limestone substratum-Urban land complex, 0 to 2 percent slopes (1.264 acres)
-  Oldsmar fine sand-Urban land complex, 0 to 2 percent slopes (0.138 acre)
-  Pineda fine sand, limestone substratum-Urban land complex, 0 to 2 percent slopes (1.268 acres)

IMAGE SOURCE: FDOT 2017

 **TAYLOR ENGINEERING INC.**
 10199 SOUTHSIDE BOULEVARD
 SUITE 310
 JACKSONVILLE, FL 32256
 CERTIFICATE OF AUTHORIZATION # 4815

APPENDIX I
 FIGURE 5
 SOUTHERN FLOWWAY #1 - NRCS SOILS MAP
 COLLIER COUNTY CWIP
 COLLIER COUNTY, FLORIDA

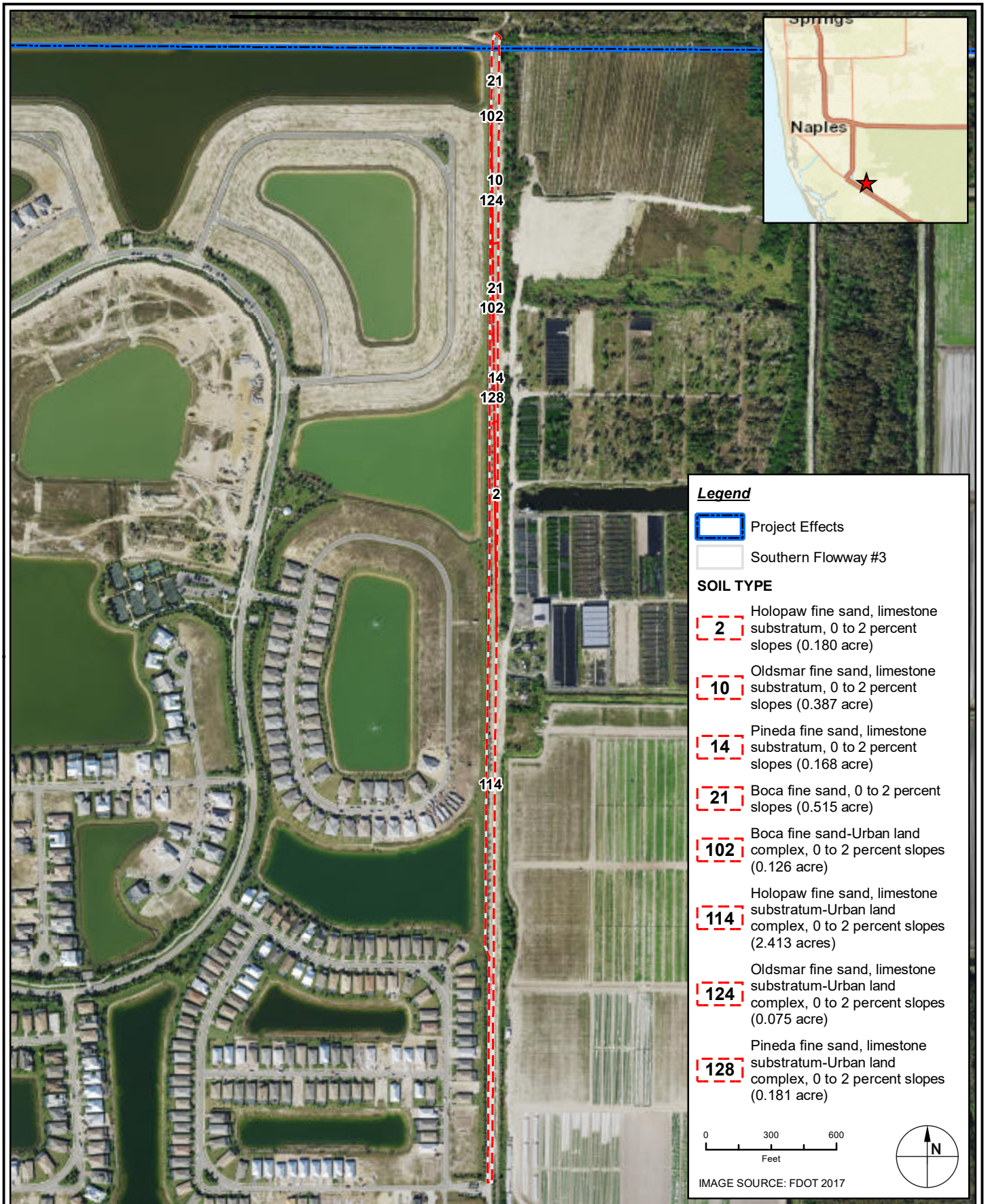
PROJECT	C2018-052
DRAWN BY	KM
SHEET	
DATE	APR 2020




TAYLOR ENGINEERING INC.
 10199 SOUTHSIDE BOULEVARD
 SUITE 310
 JACKSONVILLE, FL 32256
 CERTIFICATE OF AUTHORIZATION # 4815

APPENDIX I
 FIGURE 6
 SOUTHERN FLOWWAY #2 - NRCS SOILS MAP
 COLLIER COUNTY CWIP
 COLLIER COUNTY, FLORIDA

PROJECT	C2018-052
DRAWN BY	KM
SHEET	
DATE	APR 2020



Legend

- Project Effects
- Southern Flowway #3

SOIL TYPE

- 2** Holopaw fine sand, limestone substratum, 0 to 2 percent slopes (0.180 acre)
- 10** Oldsmar fine sand, limestone substratum, 0 to 2 percent slopes (0.387 acre)
- 14** Pineda fine sand, limestone substratum, 0 to 2 percent slopes (0.168 acre)
- 21** Boca fine sand, 0 to 2 percent slopes (0.515 acre)
- 102** Boca fine sand-Urban land complex, 0 to 2 percent slopes (0.126 acre)
- 114** Holopaw fine sand, limestone substratum-Urban land complex, 0 to 2 percent slopes (2.413 acres)
- 124** Oldsmar fine sand, limestone substratum-Urban land complex, 0 to 2 percent slopes (0.075 acre)
- 128** Pineda fine sand, limestone substratum-Urban land complex, 0 to 2 percent slopes (0.181 acre)

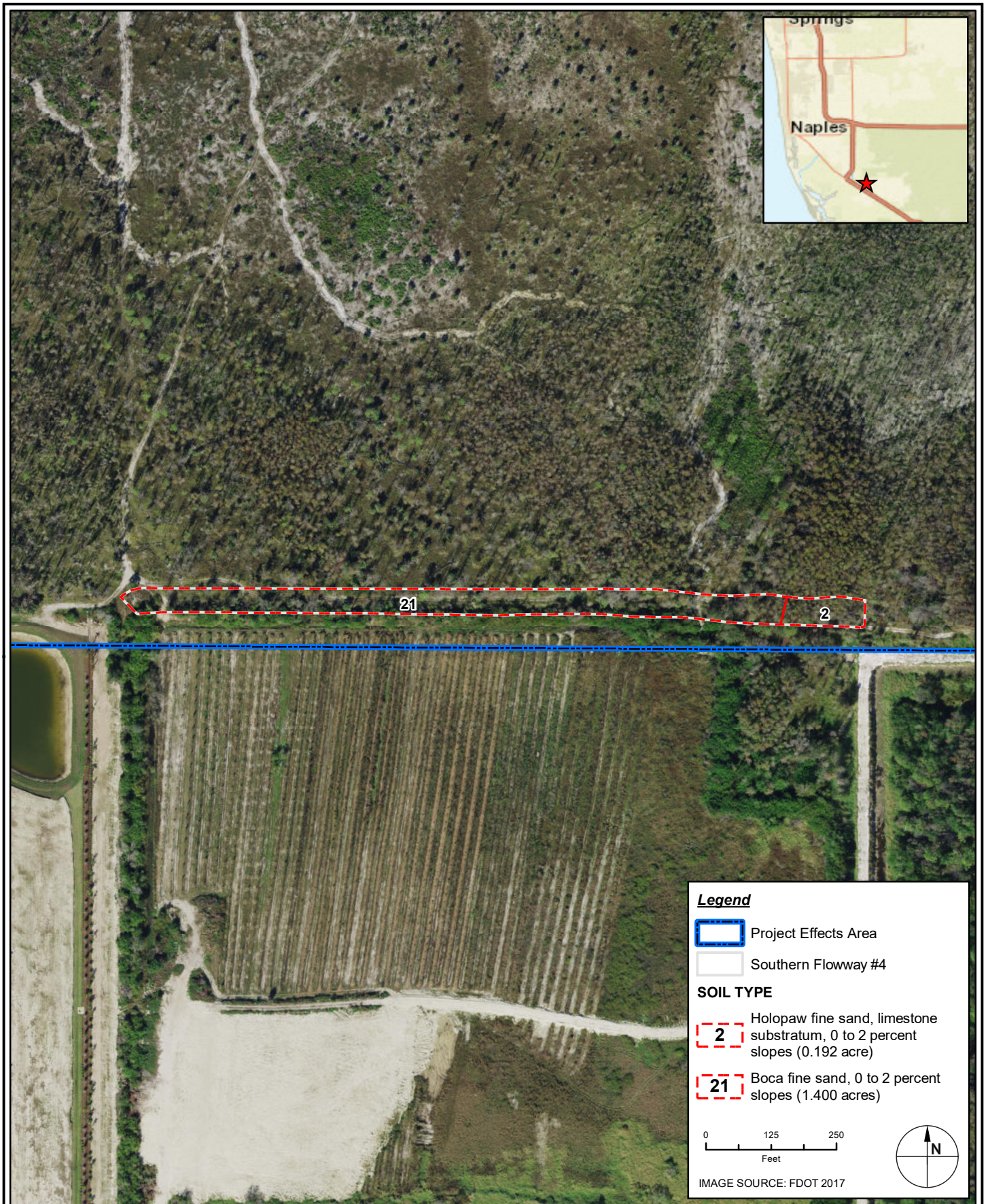
0 300 600
Feet


IMAGE SOURCE: FDOT 2017

TAYLOR ENGINEERING INC.
 10199 SOUTHSIDE BOULEVARD
 SUITE 310
 JACKSONVILLE, FL 32256
 CERTIFICATE OF AUTHORIZATION # 4815

APPENDIX I
 FIGURE 7
 SOUTHERN FLOWWAY #3 - NRCS SOILS MAP
 COLLIER COUNTY CWIP
 COLLIER COUNTY, FLORIDA

PROJECT	C2018-052
DRAWN BY	KM
SHEET	
DATE	APR 2020



 **TAYLOR ENGINEERING INC.**
 10199 SOUTHSIDE BOULEVARD
 SUITE 310
 JACKSONVILLE, FL 32256
 CERTIFICATE OF AUTHORIZATION # 4815

APPENDIX I
 FIGURE 8
 SOUTHERN FLOWWAY #4 - NRCS SOILS MAP
 COLLIER COUNTY CWIP
 COLLIER COUNTY, FLORIDA

PROJECT	C2018-052
DRAWN BY	KM
SHEET	
DATE	APR 2020