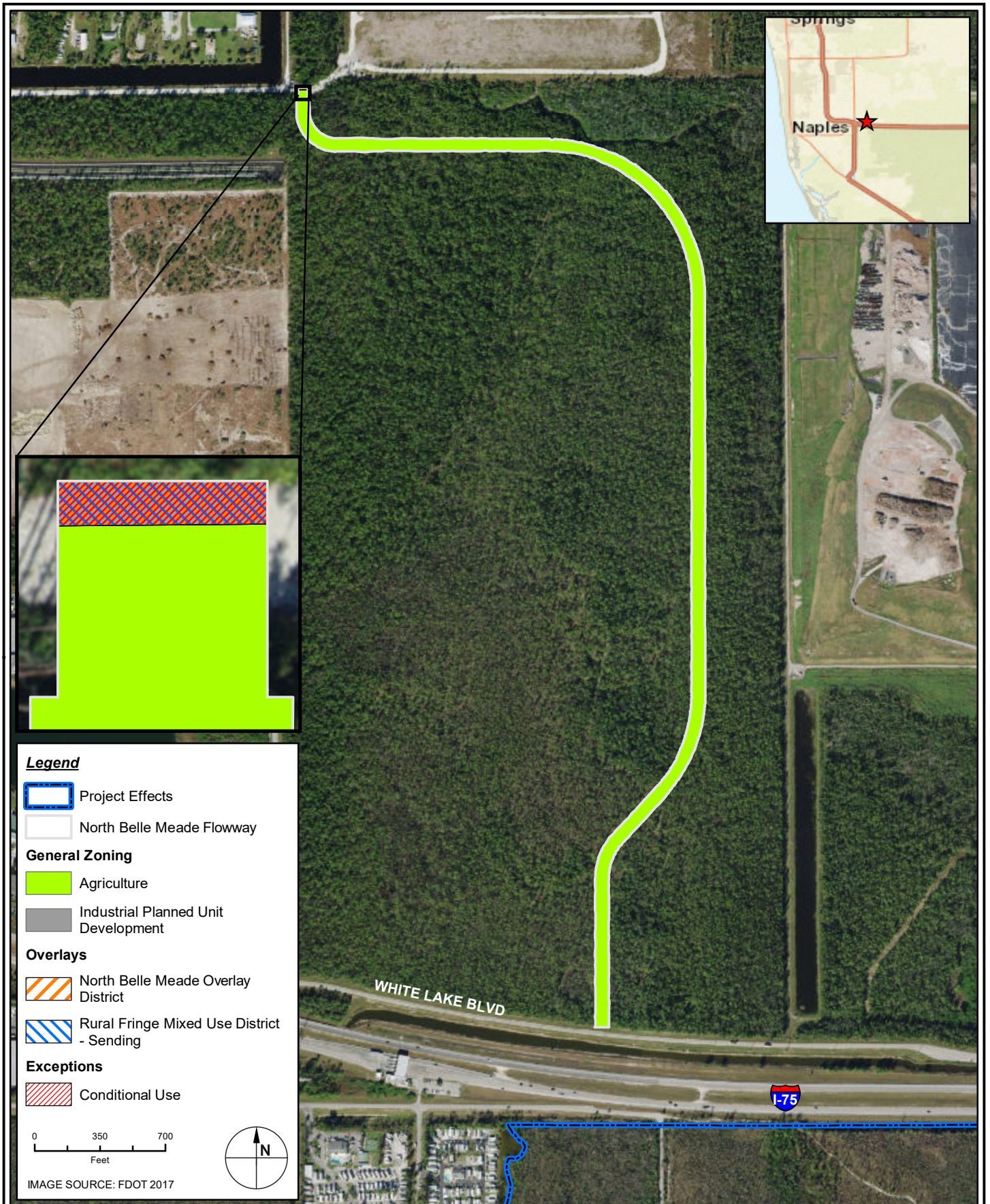



DRAFT BIOLOGICAL ASSESSMENT

**COLLIER COUNTY
COMPREHENSIVE WATERSHED IMPROVEMENT PLAN
COLLIER COUNTY, FLORIDA**

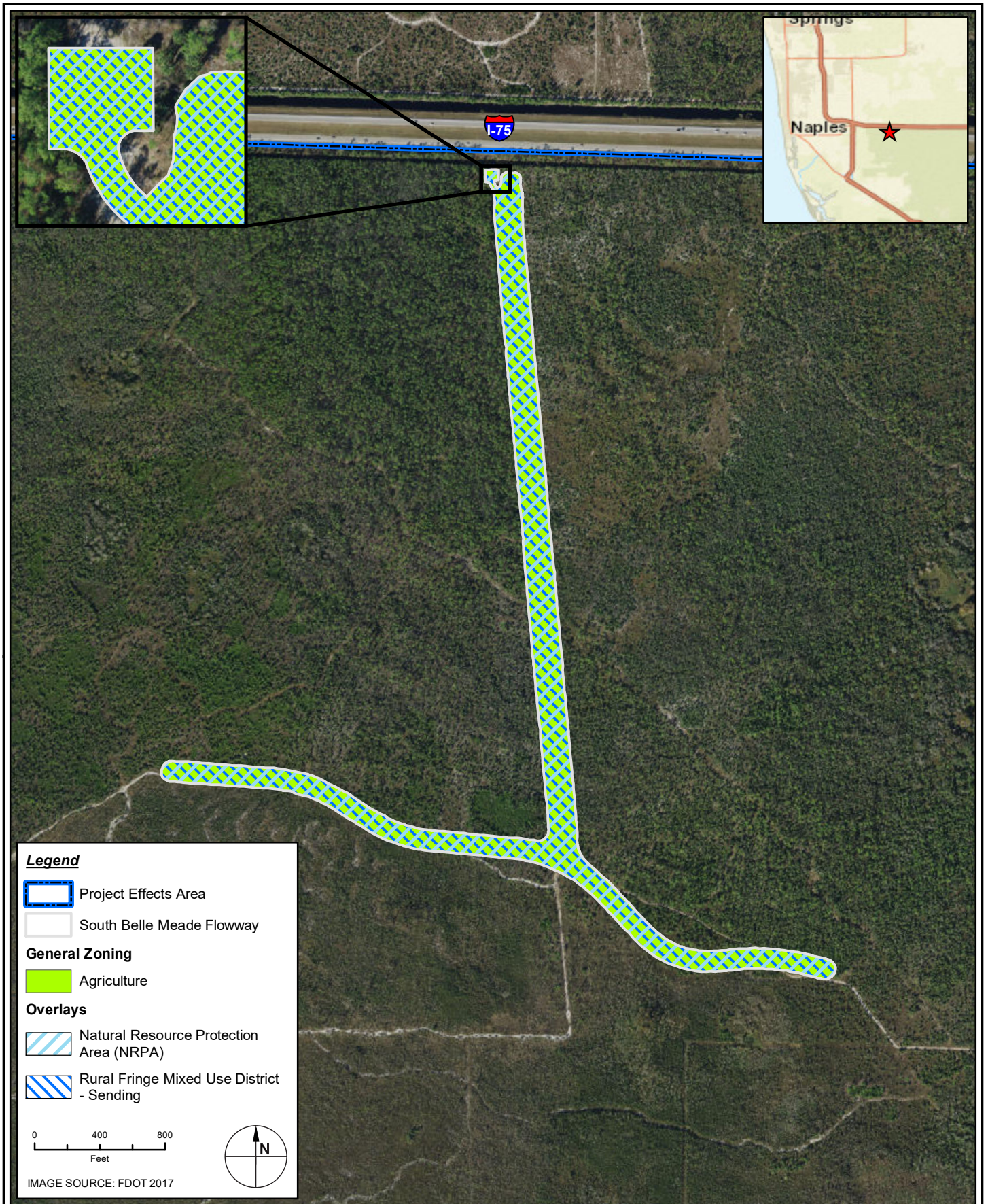
**APPENDIX G: FUTURE LAND USE MAPS – PROJECT CONSTRUCTION
AREAS**





TAYLOR ENGINEERING INC.
 10199 SOUTHSIDE BOULEVARD
 SUITE 310
 JACKSONVILLE, FL 32256
 CERTIFICATE OF AUTHORIZATION # 4815

APPENDIX G
 FIGURE 1
 NORTH BELLE MEADE FLOWWAY - FUTURE LAND USE
 COLLIER COUNTY CWIP
 COLLIER COUNTY, FLORIDA

PROJECT	C2018-052
DRAWN BY	KM
SHEET	
DATE	APR 2020





TAYLOR ENGINEERING INC.
 10199 SOUTHSIDE BOULEVARD
 SUITE 310
 JACKSONVILLE, FL 32256
 CERTIFICATE OF AUTHORIZATION # 4815

APPENDIX G
 FIGURE 2
 SOUTH BELLE MEADE FLOWWAY - FUTURE LAND USE
 COLLIER COUNTY CWIP
 COLLIER COUNTY, FLORIDA

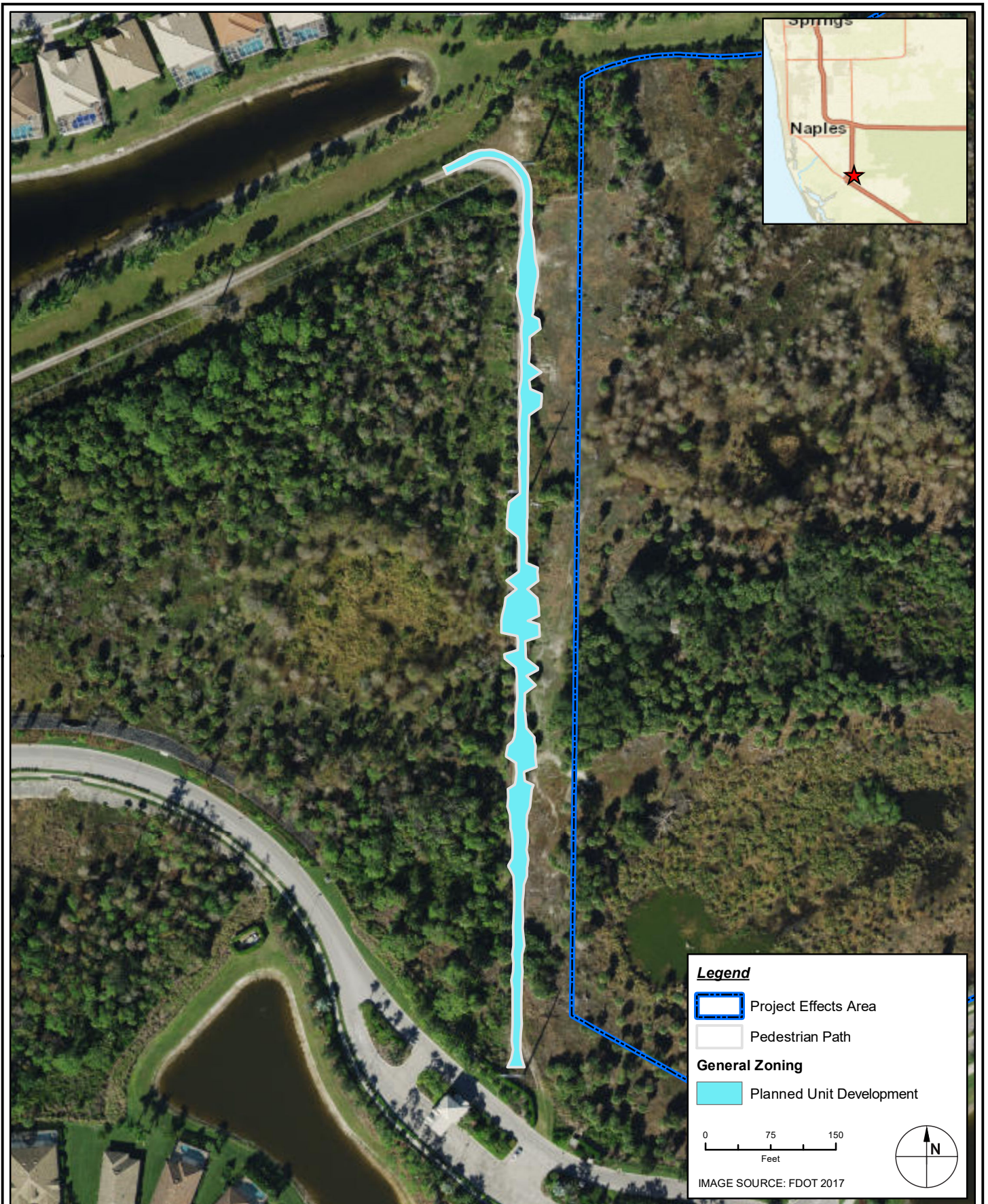
PROJECT	C2018-052
DRAWN BY	KM
SHEET	
DATE	APR 2020




 **TAYLOR ENGINEERING INC.**
 10199 SOUTHSIDE BOULEVARD
 SUITE 310
 JACKSONVILLE, FL 32256
 CERTIFICATE OF AUTHORIZATION # 4815

APPENDIX G
 FIGURE 3
 SANDERS BOULEVARD PROPERTY - FUTURE LAND USE
 COLLIER COUNTY CWIP
 COLLIER COUNTY, FLORIDA

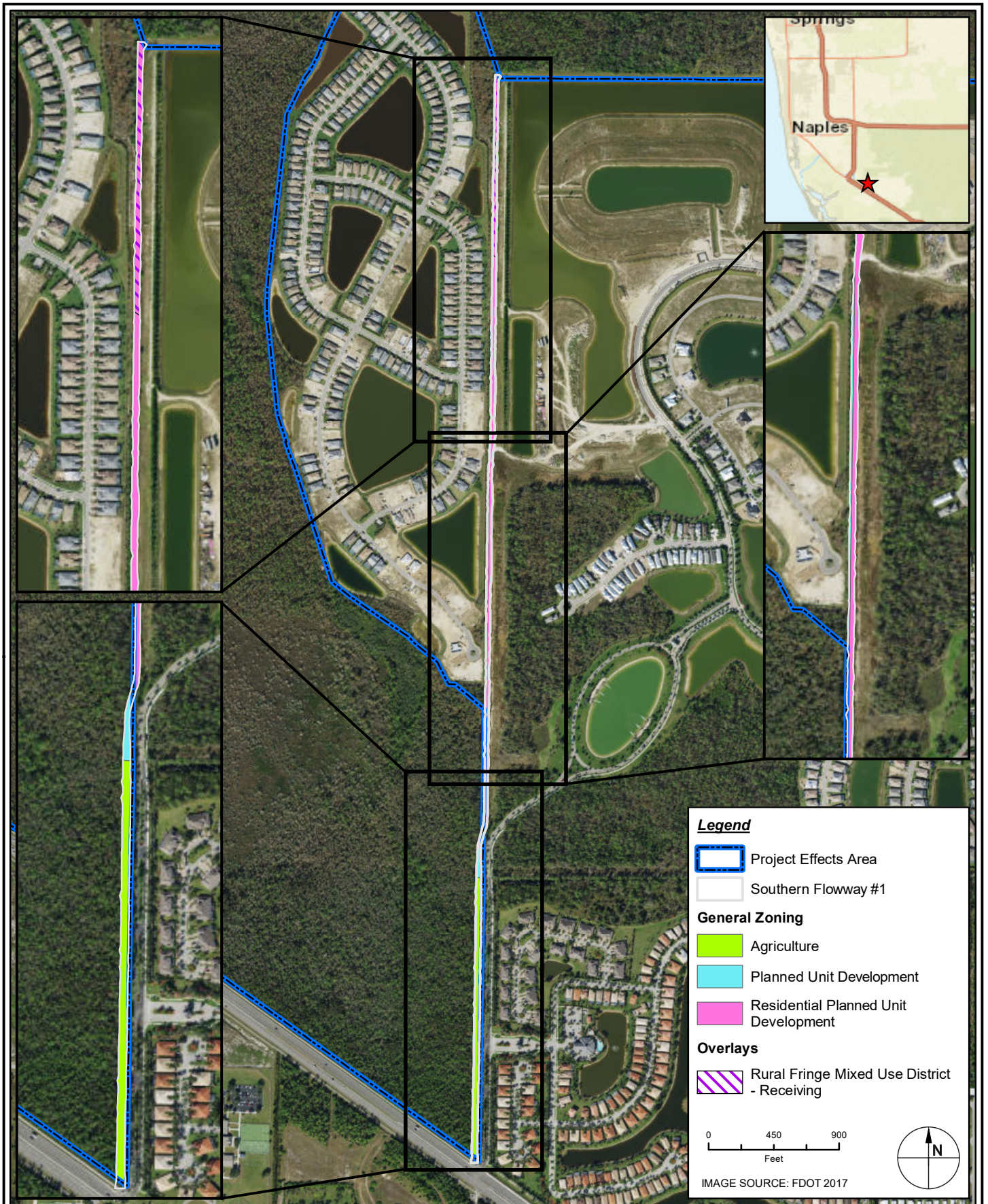
PROJECT	C2018-052
DRAWN BY	KM
SHEET	
DATE	APR 2020






TAYLOR ENGINEERING INC.
 10199 SOUTHSIDE BOULEVARD
 SUITE 310
 JACKSONVILLE, FL 32256
 CERTIFICATE OF AUTHORIZATION # 4815

APPENDIX G
 FIGURE 4
 PEDESTRIAN PATH - FUTURE LAND USE
 COLLIER COUNTY CWIP
 COLLIER COUNTY, FLORIDA




PROJECT	C2018-052
DRAWN BY	KM
SHEET	
DATE	APR 2020




Legend

-  Project Effects Area
-  Southern Flowway #1

General Zoning


-  Agriculture
-  Planned Unit Development
-  Residential Planned Unit Development

Overlays

-  Rural Fringe Mixed Use District - Receiving

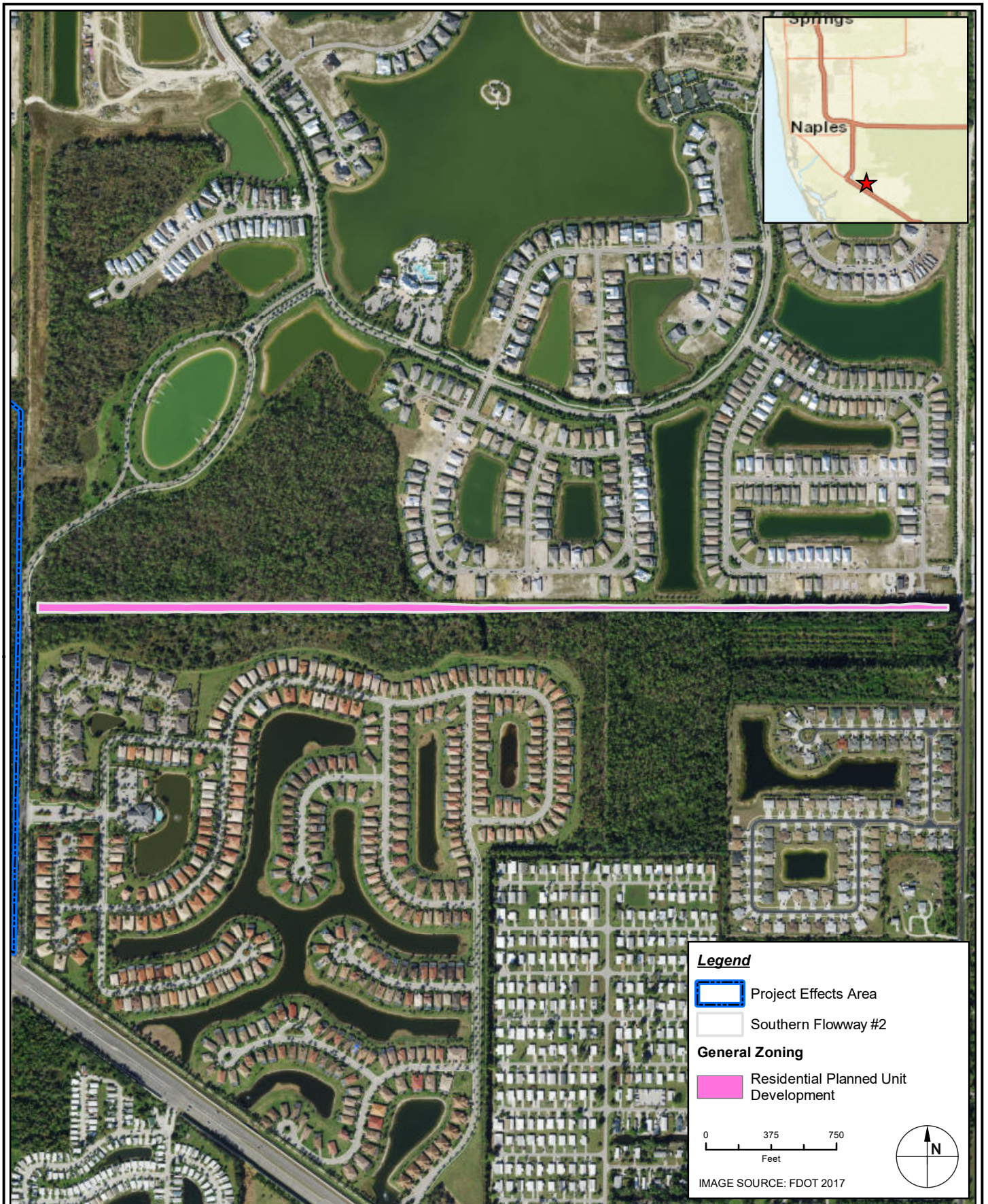
0 450 900
Feet


IMAGE SOURCE: FDOT 2017

 **TAYLOR ENGINEERING INC.**
 10199 SOUTHSIDE BOULEVARD
 SUITE 310
 JACKSONVILLE, FL 32256
 CERTIFICATE OF AUTHORIZATION # 4815

APPENDIX G
 FIGURE 5
 SOUTHERN FLOWWAYS #1 - FUTURE LAND USE
 COLLIER COUNTY CWIP
 COLLIER COUNTY, FLORIDA

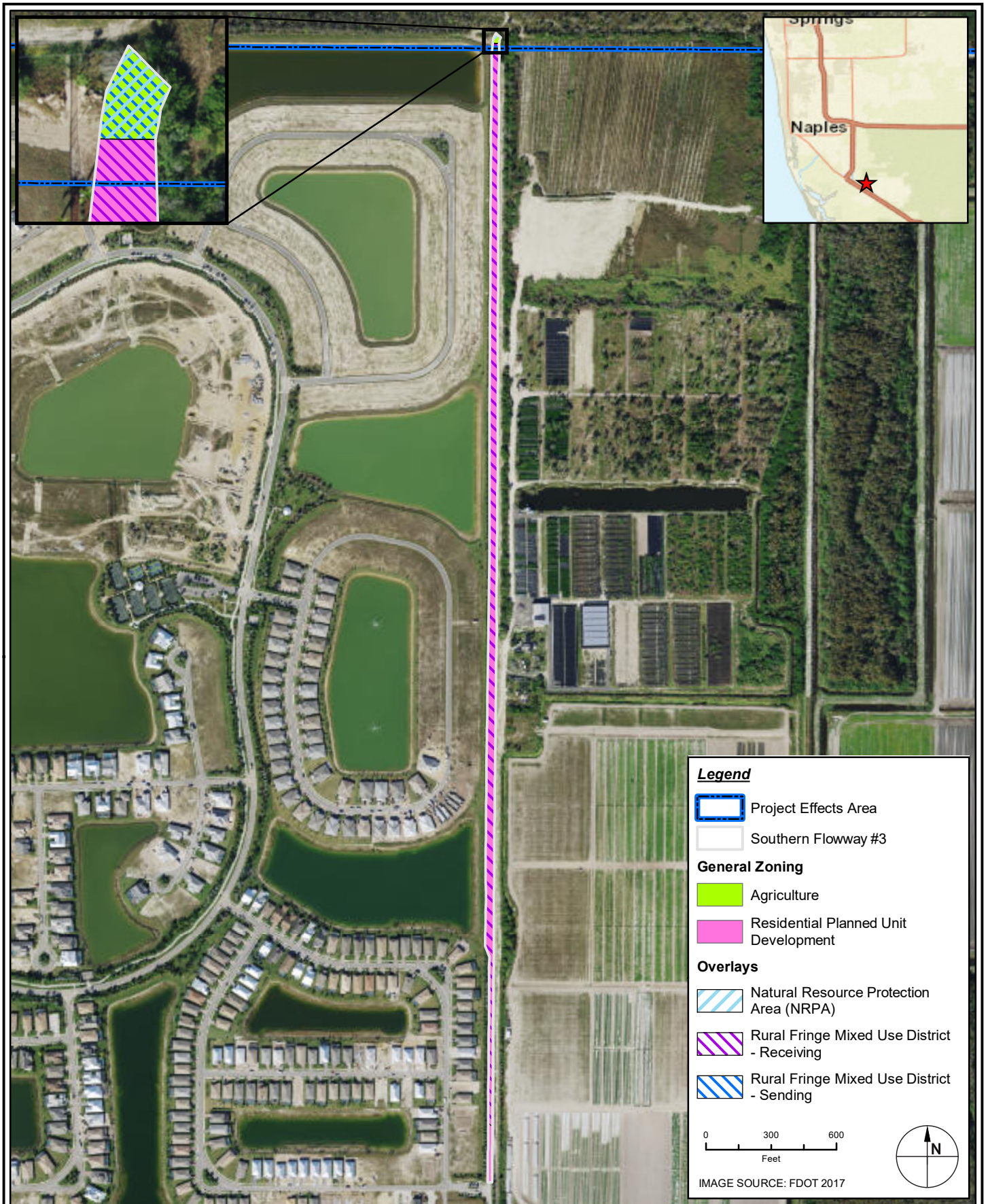
PROJECT	C2018-052
DRAWN BY	KM
SHEET	
DATE	APR 2020





TAYLOR ENGINEERING INC.
 10199 SOUTHSIDE BOULEVARD
 SUITE 310
 JACKSONVILLE, FL 32256
 CERTIFICATE OF AUTHORIZATION # 4815

APPENDIX G
 FIGURE 6
 SOUTHERN FLOWWAYS #2 - FUTURE LAND USE
 COLLIER COUNTY CWIP
 COLLIER COUNTY, FLORIDA

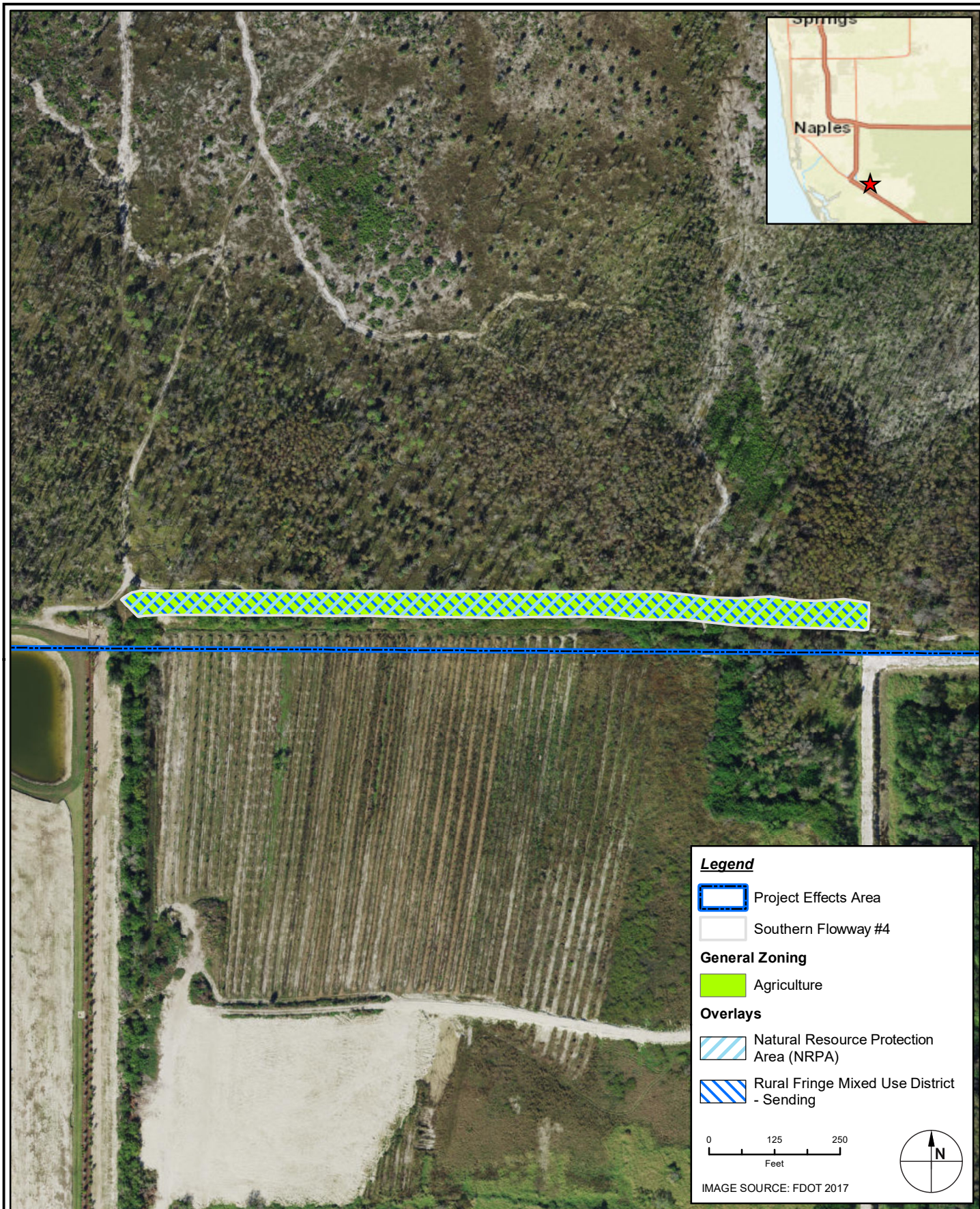
PROJECT	C2018-052
DRAWN BY	KM
SHEET	
DATE	APR 2020





TAYLOR ENGINEERING INC.
 10199 SOUTHSIDE BOULEVARD
 SUITE 310
 JACKSONVILLE, FL 32256
 CERTIFICATE OF AUTHORIZATION # 4815

APPENDIX G
 FIGURE 7
 SOUTHERN FLOWWAYS #3 - FUTURE LAND USE
 COLLIER COUNTY CWIP
 COLLIER COUNTY, FLORIDA

PROJECT	C2018-052
DRAWN BY	KM
SHEET	
DATE	APR 2020




TAYLOR ENGINEERING INC.
 10199 SOUTHSIDE BOULEVARD
 SUITE 310
 JACKSONVILLE, FL 32256
 CERTIFICATE OF AUTHORIZATION # 4815

APPENDIX G
 FIGURE 8
 SOUTHERN FLOWWAYS #4 - FUTURE LAND USE
 COLLIER COUNTY CWIP
 COLLIER COUNTY, FLORIDA

PROJECT	C2018-052
DRAWN BY	KM
SHEET	
DATE	APR 2020