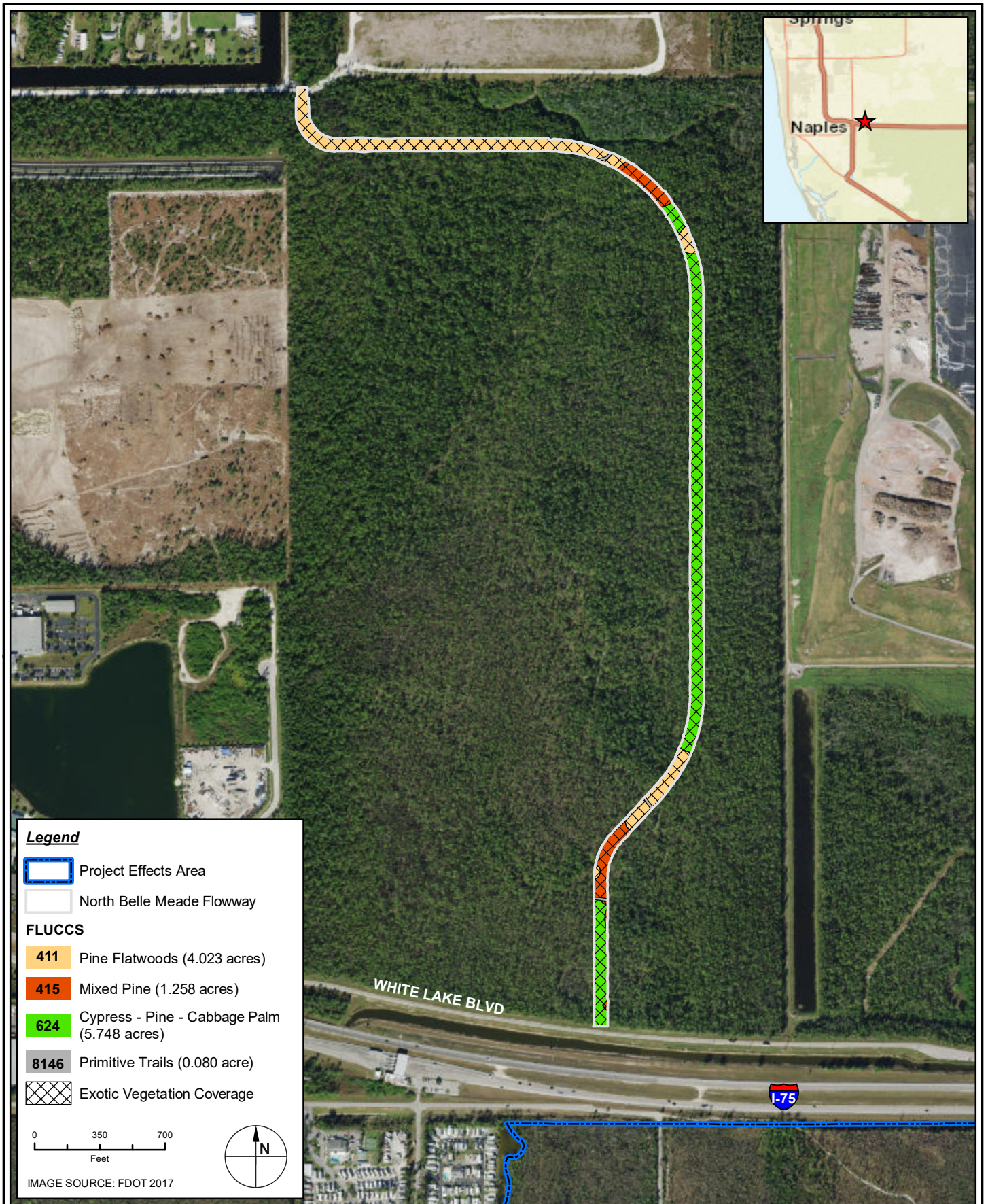



DRAFT BIOLOGICAL ASSESSMENT

**COLLIER COUNTY
COMPREHENSIVE WATERSHED IMPROVEMENT PLAN
COLLIER COUNTY, FLORIDA**

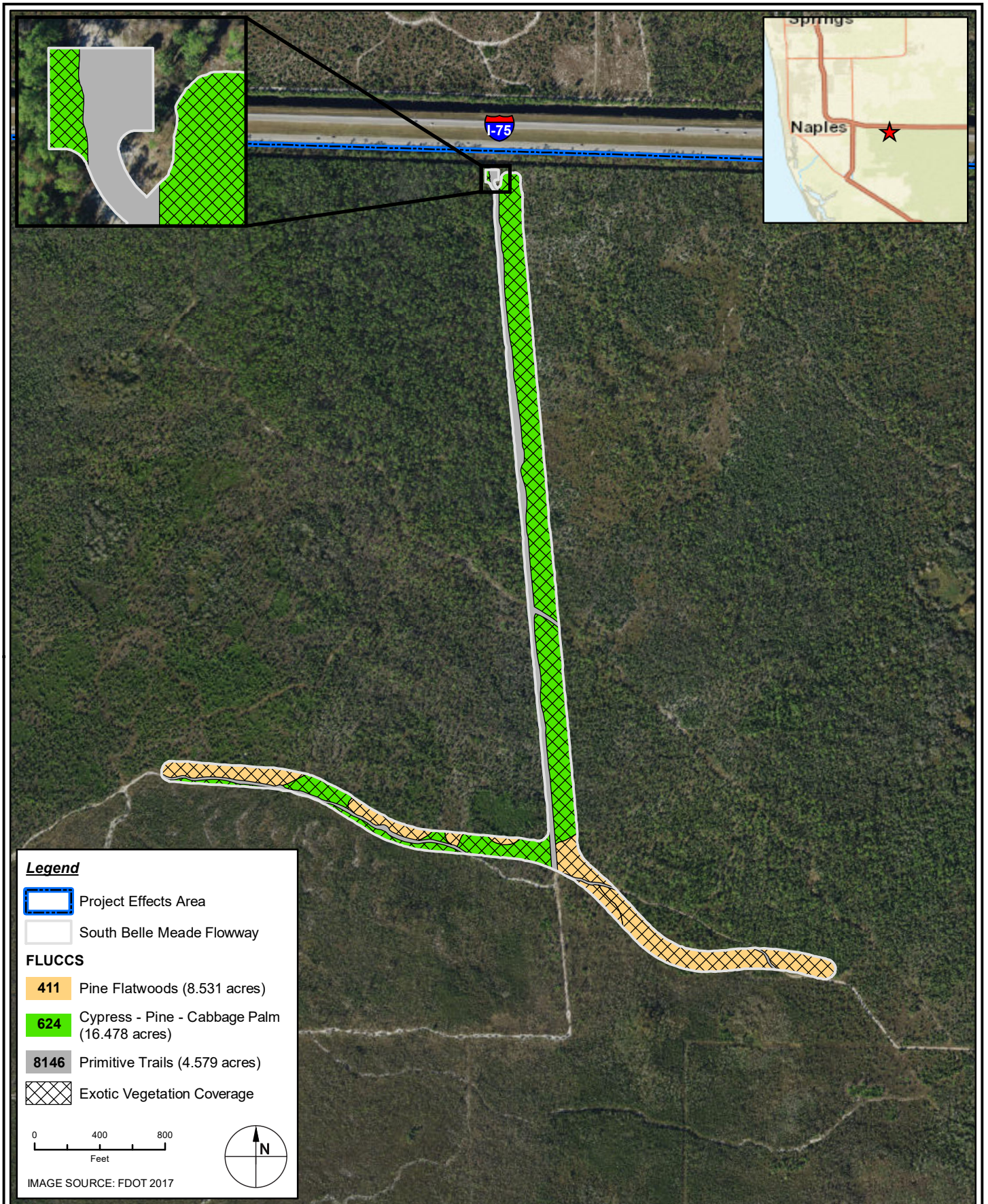
APPENDIX E: FLUCCS MAPS – PROJECT CONSTRUCTION AREAS




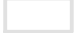
 **TAYLOR ENGINEERING INC.**
10199 SOUTHSIDE BOULEVARD
SUITE 310
JACKSONVILLE, FL 32256
CERTIFICATE OF AUTHORIZATION # 4815

APPENDIX E
FIGURE 1
NORTH BELLE MEADE FLOWWAY - EXISTING FLUCCS
COLLIER COUNTY CWIP
COLLIER COUNTY, FLORIDA

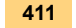

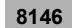

PROJECT	C2018-052
DRAWN BY	KM
SHEET	
DATE	APR 2020



Legend


-  Project Effects Area
-  South Belle Meade Flowway

FLUCCS

-  **411** Pine Flatwoods (8.531 acres)
-  **624** Cypress - Pine - Cabbage Palm (16.478 acres)
-  **8146** Primitive Trails (4.579 acres)
-  Exotic Vegetation Coverage

0 400 800
Feet

IMAGE SOURCE: FDOT 2017



TAYLOR ENGINEERING INC.
 10199 SOUTHSIDE BOULEVARD
 SUITE 310
 JACKSONVILLE, FL 32256
 CERTIFICATE OF AUTHORIZATION # 4815

APPENDIX E
 FIGURE 2
 SOUTH BELLE MEADE FLOWWAY - EXISTING FLUCCS
 COLLIER COUNTY CWIP
 COLLIER COUNTY, FLORIDA

PROJECT	C2018-052
DRAWN BY	KM
SHEET	
DATE	APR 2020

Legend

Project Effects Area

Sanders Boulevard Property

FLUCCS

500 Water (0.043 acre)

619 Exotic Wetland Hardwoods (0.511 acre)

624 Cypress - Pine - Cabbage Palm (1.071 acres)

625 Hydric Pine Flatwoods (0.916 acre)

740 Disturbed Land (1.271 acres)

814 Roads and Highways (0.026 acre)

Exotic Vegetation Coverage

0 100 200
Feet

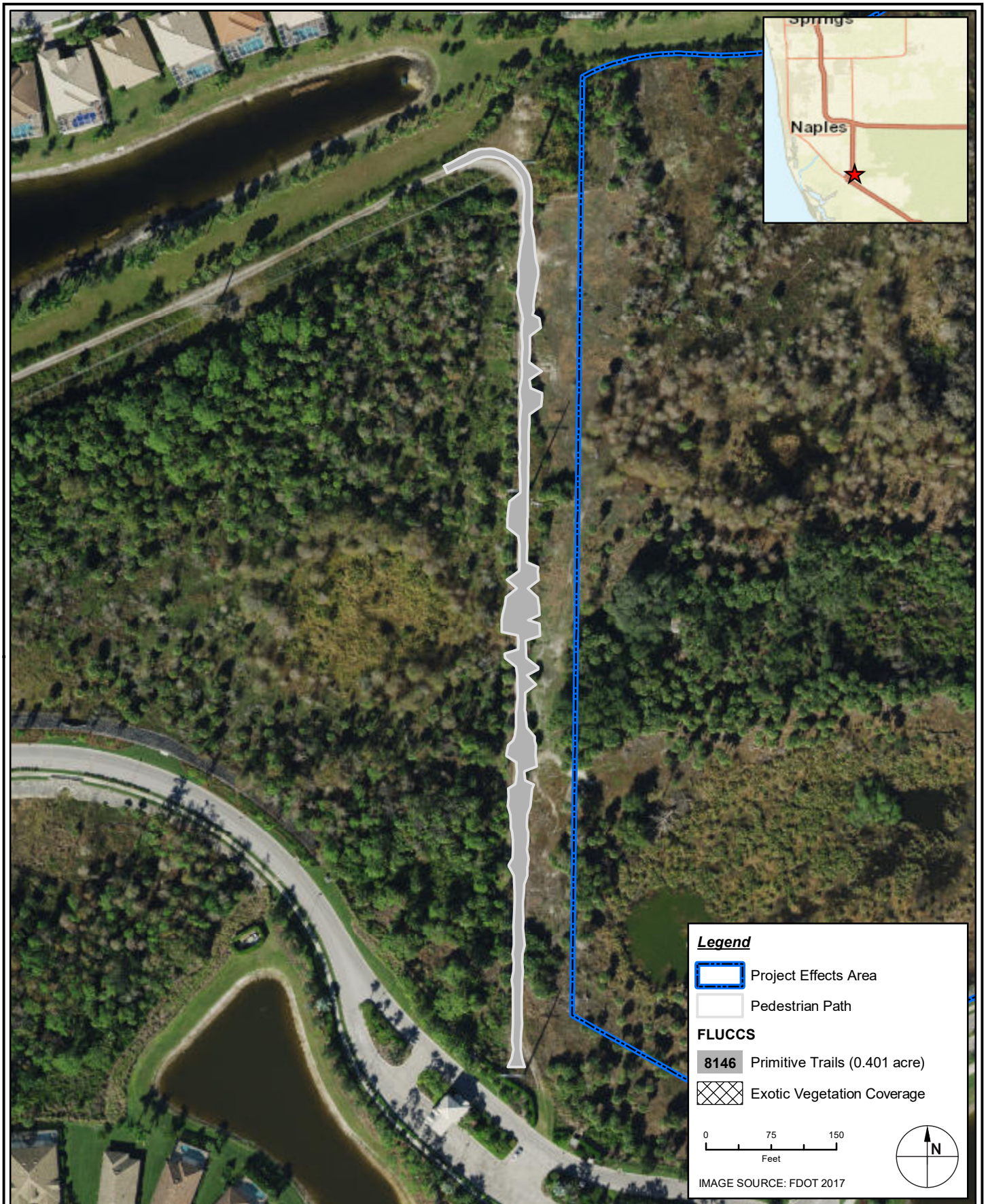
IMAGE SOURCE: FDOT 2017




TAYLOR ENGINEERING INC.
 10199 SOUTHSIDE BOULEVARD
 SUITE 310
 JACKSONVILLE, FL 32256
 CERTIFICATE OF AUTHORIZATION # 4815

APPENDIX E
 FIGURE 3
 SANDERS BOULEVARD PROPERTY - EXISTING FLUCCS
 COLLIER COUNTY CWIP
 COLLIER COUNTY, FLORIDA

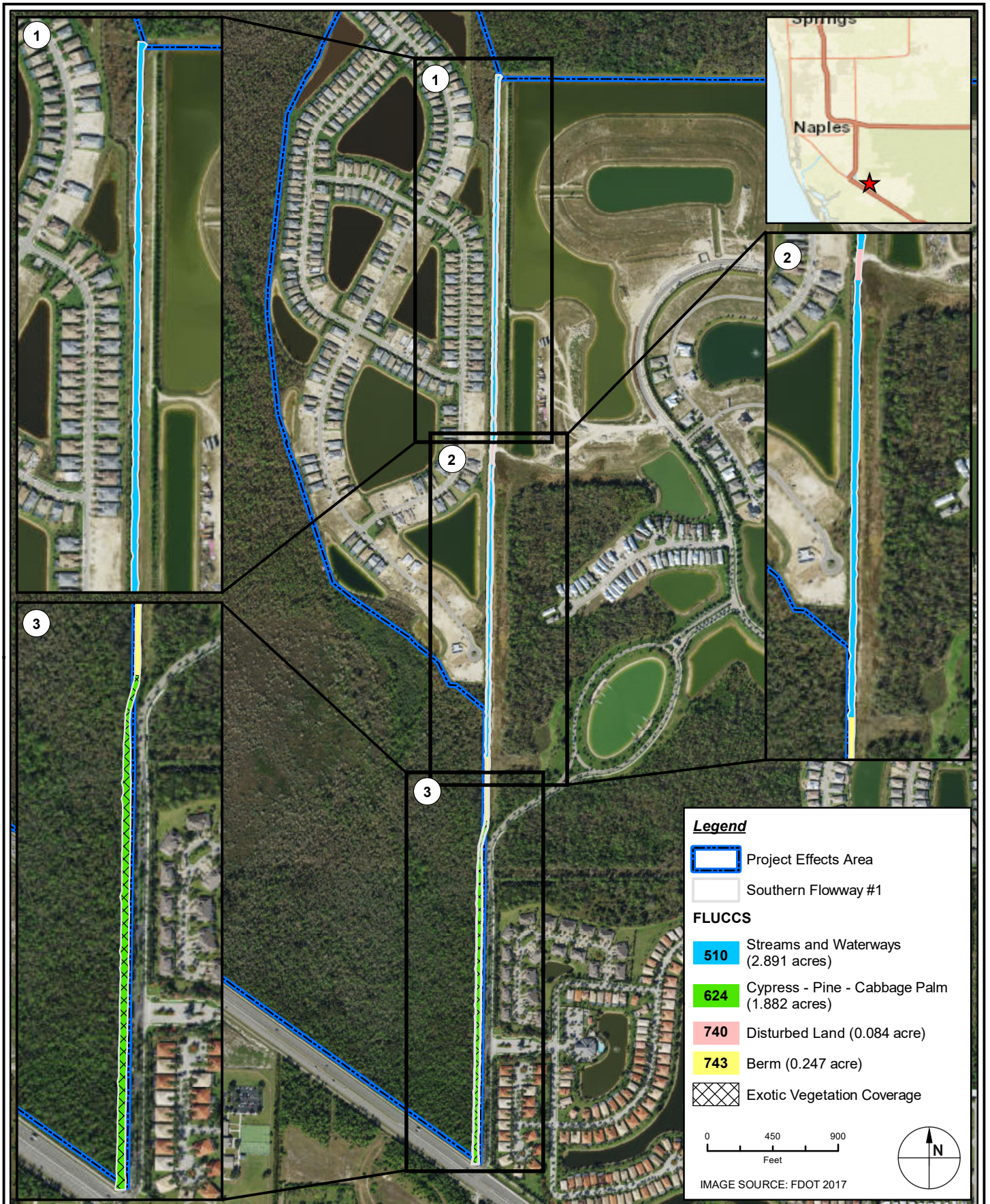
PROJECT	C2018-052
DRAWN BY	KM
SHEET	
DATE	APR 2020




TAYLOR ENGINEERING INC.
 10199 SOUTHSIDE BOULEVARD
 SUITE 310
 JACKSONVILLE, FL 32256
 CERTIFICATE OF AUTHORIZATION # 4815

APPENDIX E
 FIGURE 4
 PEDESTRIAN PATH - EXISTING FLUCCS
 COLLIER COUNTY CWIP
 COLLIER COUNTY, FLORIDA

PROJECT	C2018-052
DRAWN BY	KM
SHEET	
DATE	APR 2020



Legend


- Project Effects Area
- Southern Flowway #1

FLUCCS

- 510 Streams and Waterways (2.891 acres)
- 624 Cypress - Pine - Cabbage Palm (1.882 acres)
- 740 Disturbed Land (0.084 acre)
- 743 Berm (0.247 acre)
- Exotic Vegetation Coverage

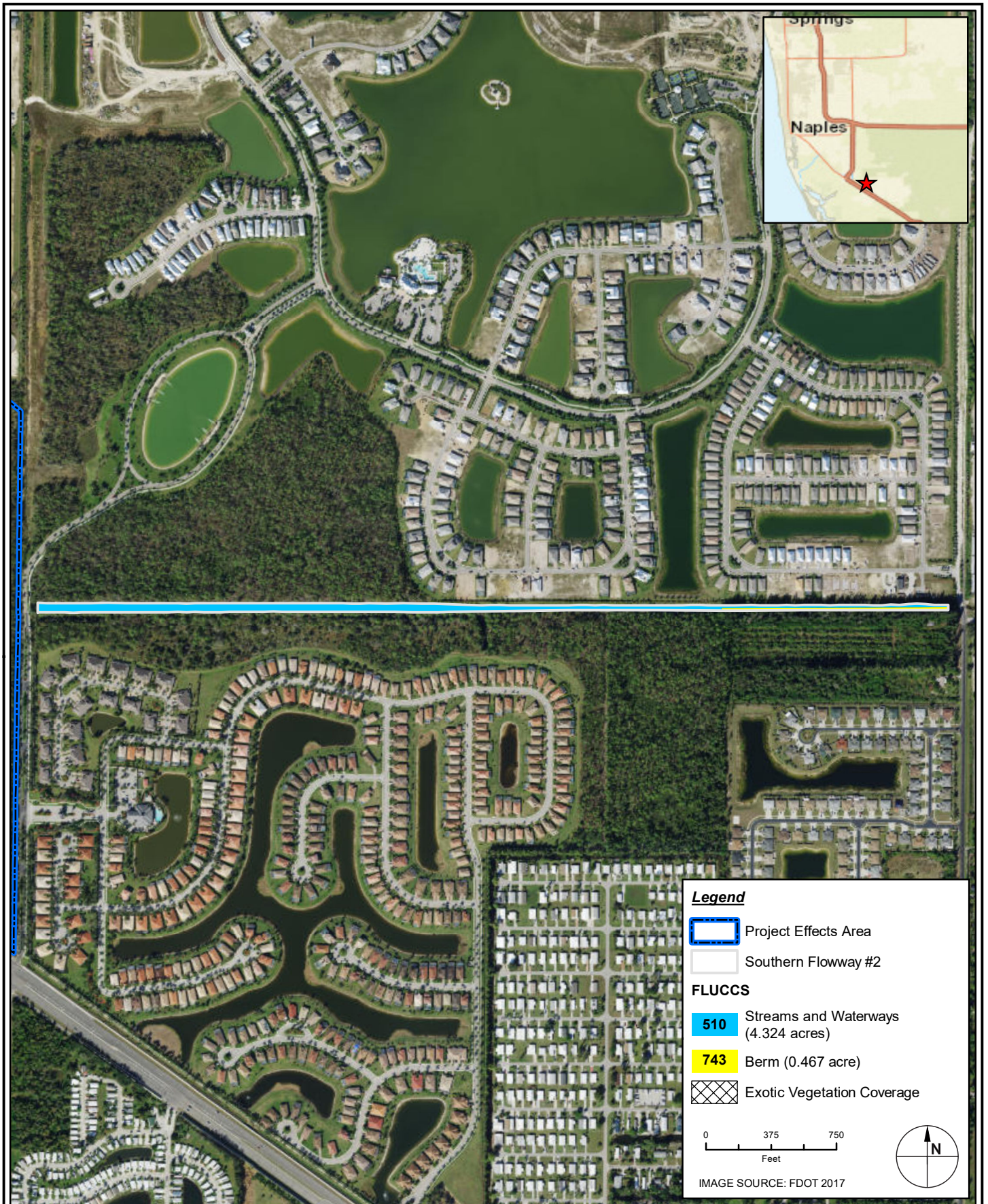
0 450 900
Feet

IMAGE SOURCE: FDOT 2017



 **TAYLOR ENGINEERING INC.**
 10199 SOUTHSIDE BOULEVARD
 SUITE 310
 JACKSONVILLE, FL 32256
 CERTIFICATE OF AUTHORIZATION # 4815

APPENDIX E
 FIGURE 5
 SOUTHERN FLOWWAY #1 - EXISTING FLUCCS
 COLLIER COUNTY CWIP
 COLLIER COUNTY, FLORIDA




PROJECT	C2018-052
DRAWN BY	KM
SHEET	
DATE	APR 2020



Legend


-  Project Effects Area
-  Southern Flowway #2


FLUCCS

-  510 Streams and Waterways (4.324 acres)
-  743 Berm (0.467 acre)
-  Exotic Vegetation Coverage

0 375 750
Feet

IMAGE SOURCE: FDOT 2017



 **TAYLOR ENGINEERING INC.**
 10199 SOUTHSIDE BOULEVARD
 SUITE 310
 JACKSONVILLE, FL 32256
 CERTIFICATE OF AUTHORIZATION # 4815

APPENDIX E
 FIGURE 6
 SOUTHERN FLOWWAY #2 - EXISTING FLUCCS
 COLLIER COUNTY CWIP
 COLLIER COUNTY, FLORIDA

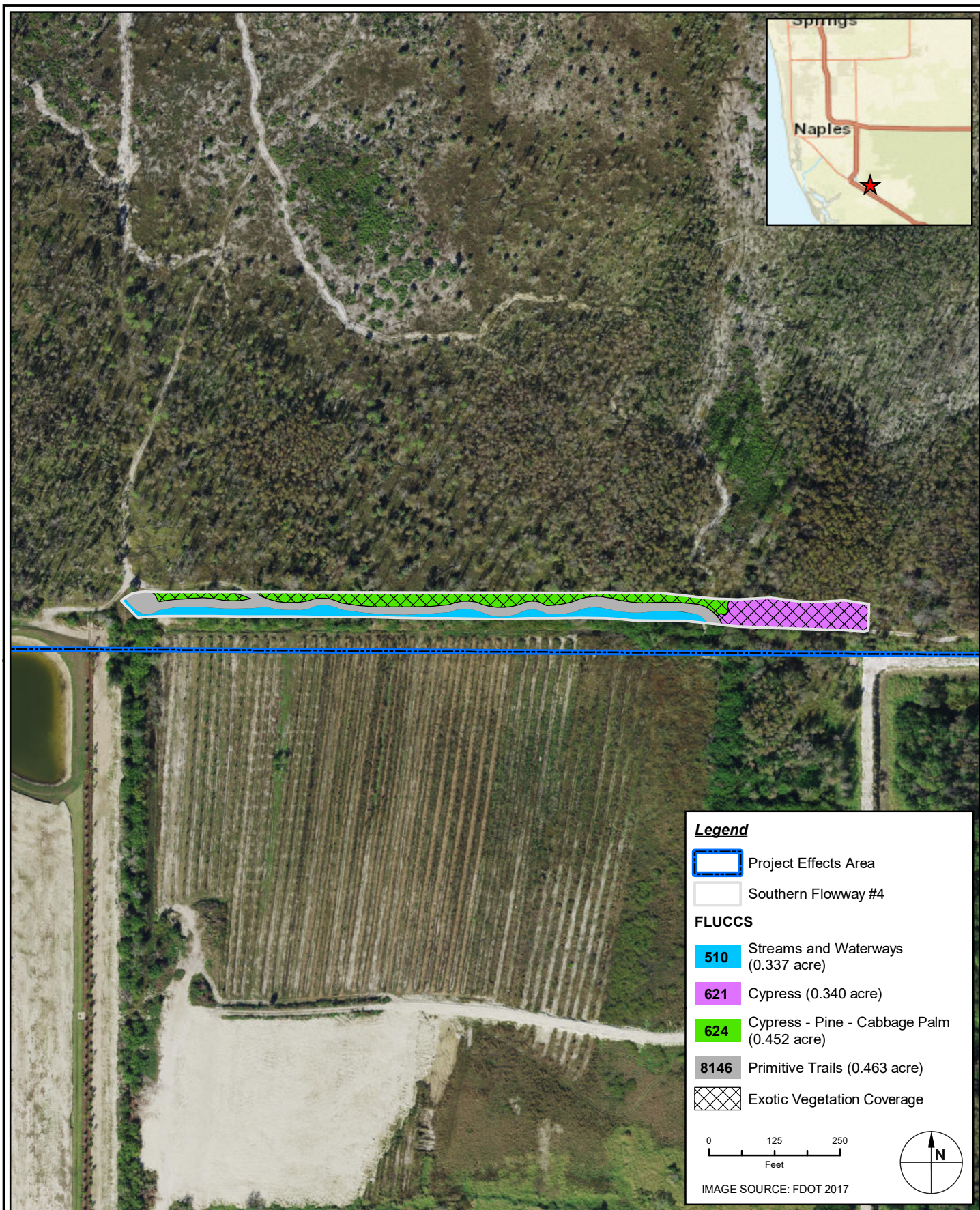
PROJECT	C2018-052
DRAWN BY	KM
SHEET	
DATE	APR 2020




TAYLOR ENGINEERING INC.
 10199 SOUTHSIDE BOULEVARD
 SUITE 310
 JACKSONVILLE, FL 32256
 CERTIFICATE OF AUTHORIZATION # 4815

APPENDIX E
 FIGURE 7
 SOUTHERN FLOWWAY #3 - EXISTING FLUCCS
 COLLIER COUNTY CWIP
 COLLIER COUNTY, FLORIDA

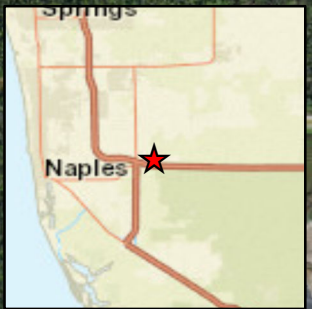
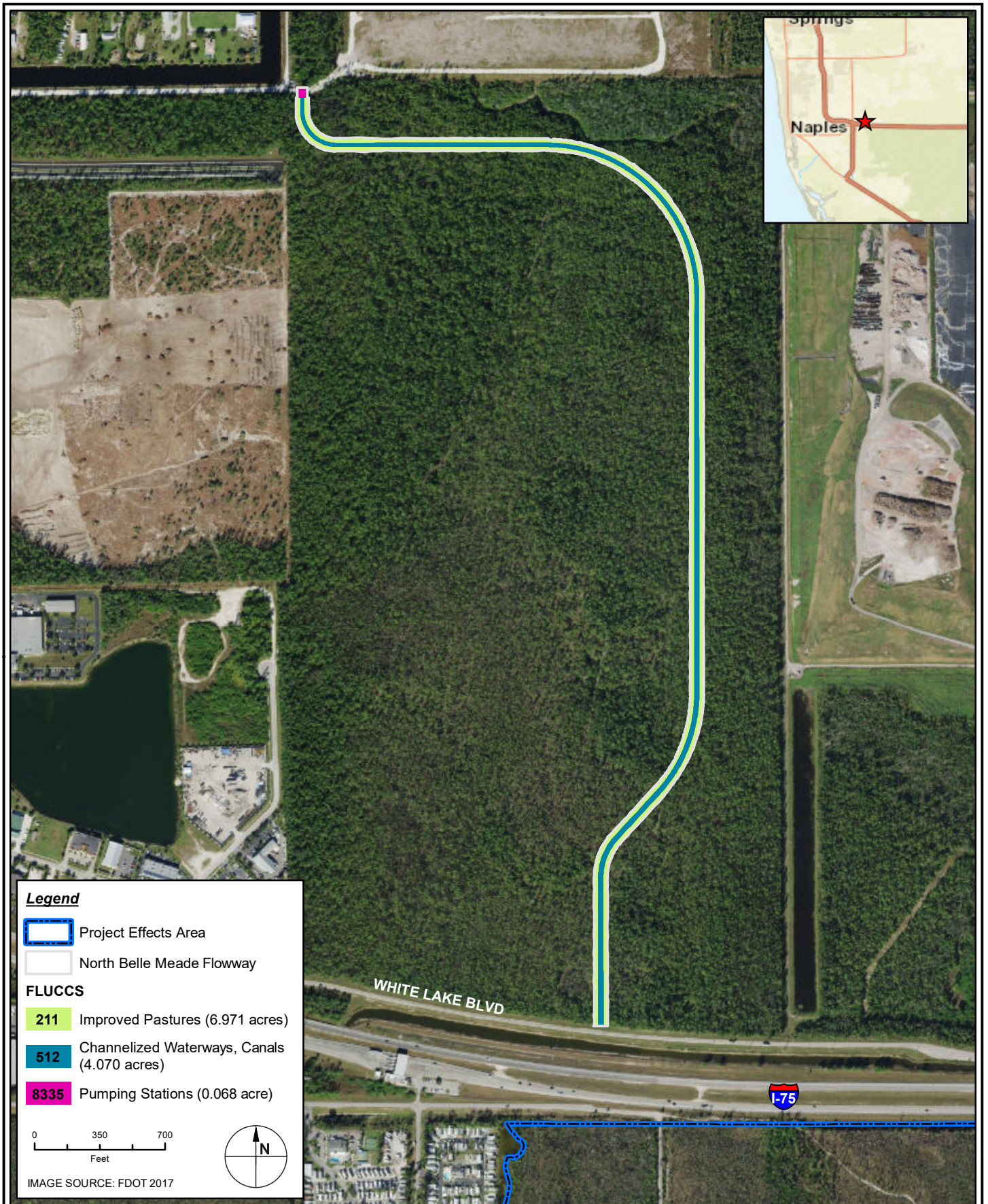
PROJECT	C2018-052
DRAWN BY	KM
SHEET	
DATE	APR 2020



 **TAYLOR ENGINEERING INC.**
 10199 SOUTHSIDE BOULEVARD
 SUITE 310
 JACKSONVILLE, FL 32256
 CERTIFICATE OF AUTHORIZATION # 4815

APPENDIX E
 FIGURE 8
 SOUTHERN FLOWWAY #4 - EXISTING FLUCCS
 COLLIER COUNTY CWIP
 COLLIER COUNTY, FLORIDA

PROJECT	C2018-052
DRAWN BY	KM
SHEET	
DATE	APR 2020



Legend

- Project Effects Area
- North Belle Meade Flowway

FLUCCS

- 211 Improved Pastures (6.971 acres)
- 512 Channelized Waterways, Canals (4.070 acres)
- 8335 Pumping Stations (0.068 acre)

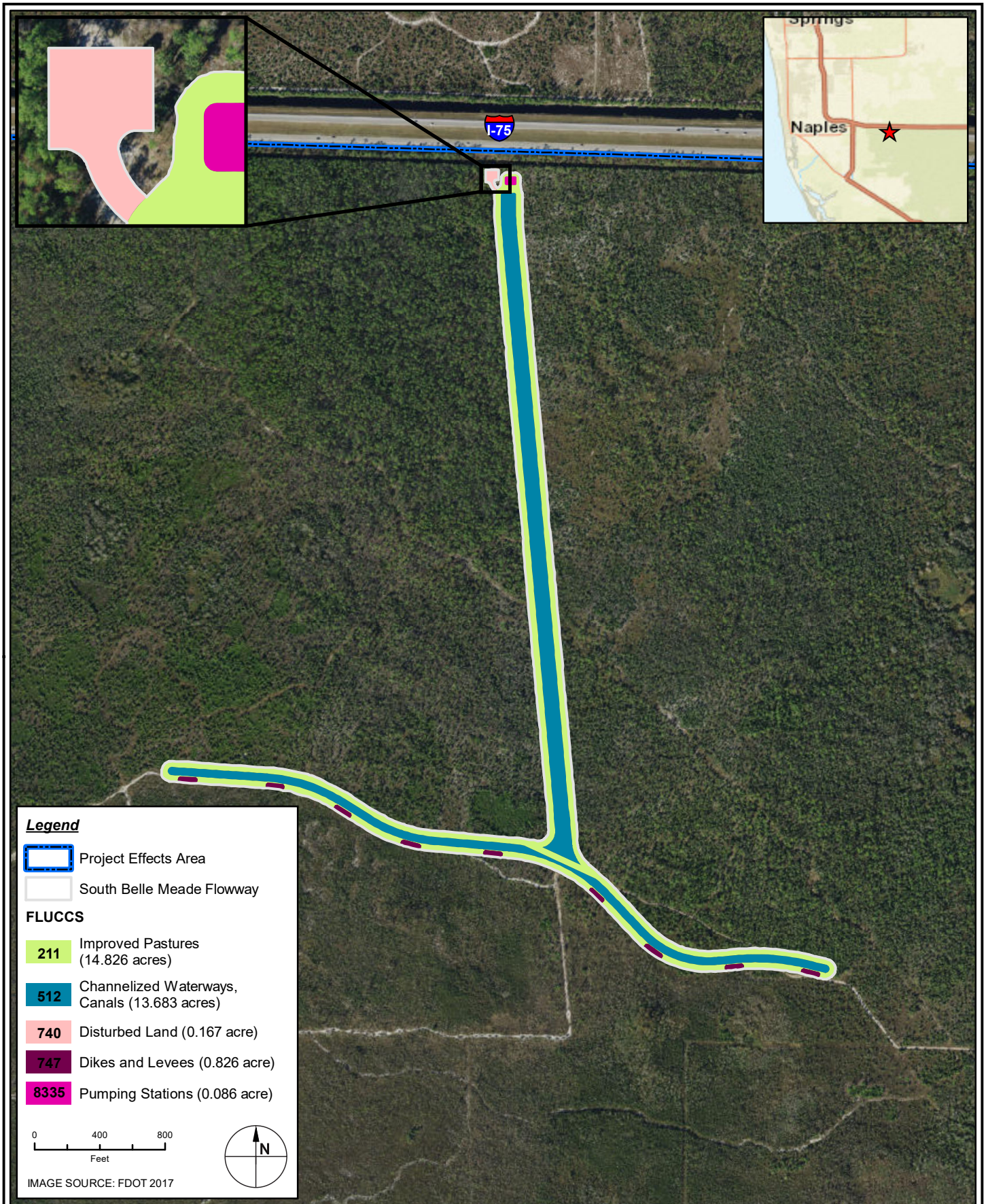
0 350 700
Feet

IMAGE SOURCE: FDOT 2017

TAYLOR ENGINEERING INC.
 10199 SOUTHSIDE BOULEVARD
 SUITE 310
 JACKSONVILLE, FL 32256
 CERTIFICATE OF AUTHORIZATION # 4815

APPENDIX E
 FIGURE 9
 NORTH BELLE MEADE FLOWWAY - PROPOSED FLUCCS
 COLLIER COUNTY CWIP
 COLLIER COUNTY, FLORIDA

PROJECT	C2018-052
DRAWN BY	KM
SHEET	
DATE	APR 2020




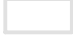
TAYLOR ENGINEERING INC.
 10199 SOUTHSIDE BOULEVARD
 SUITE 310
 JACKSONVILLE, FL 32256
 CERTIFICATE OF AUTHORIZATION # 4815

APPENDIX E
 FIGURE 10
 SOUTH BELLE MEADE FLOWWAY - PROPOSED FLUCCS
 COLLIER COUNTY CWIP
 COLLIER COUNTY, FLORIDA


PROJECT	C2018-052
DRAWN BY	KM
SHEET	
DATE	APR 2020


Legend


 Project Effects Area

 Sanders Boulevard Property

FLUCCS


 211 Improved Pastures (2.080 acres)

 512 Channelized Waterways, Canals (1.654 acres)

 8335 Pumping Stations (0.104 acre)

0 100 200
Feet

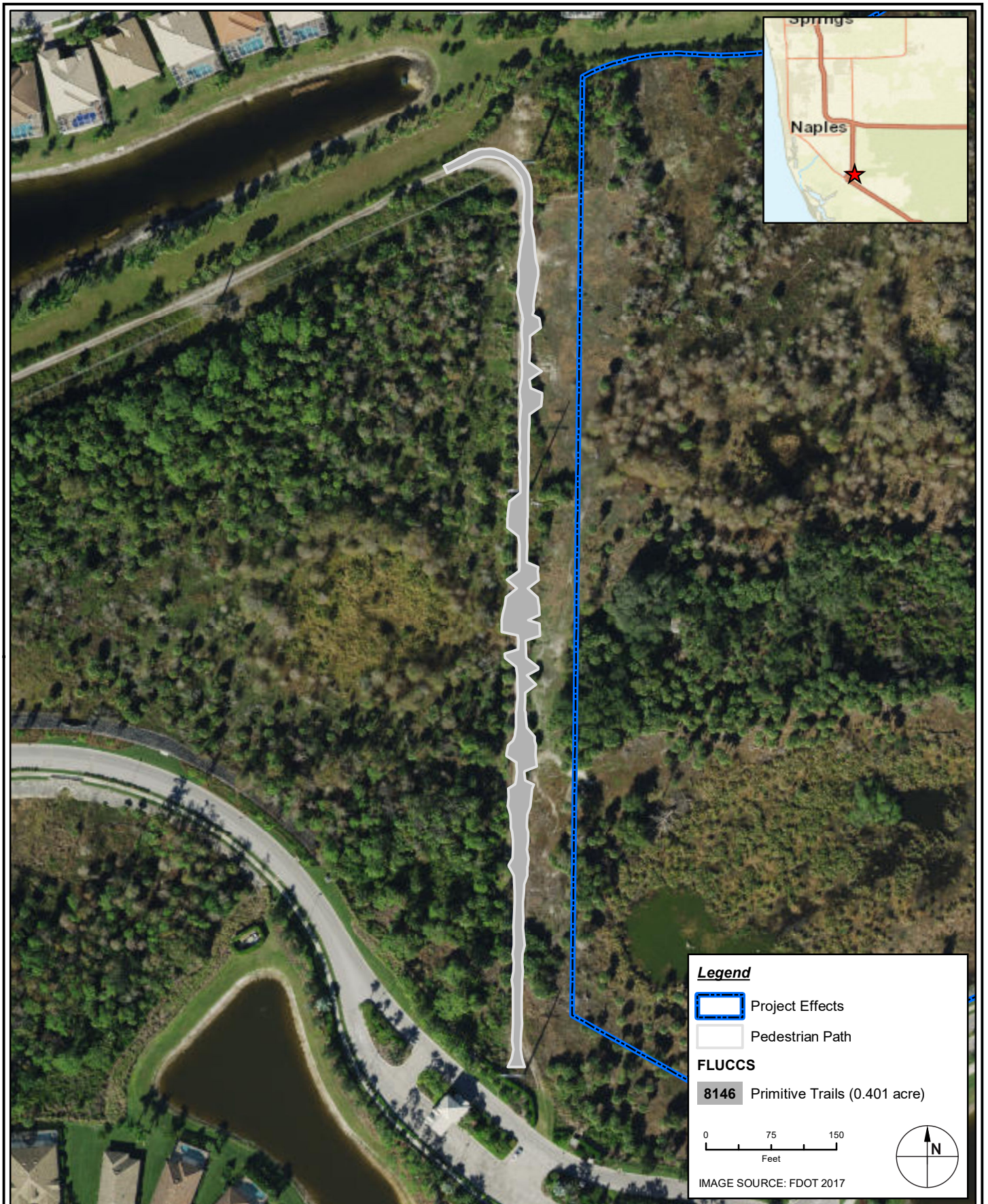
IMAGE SOURCE: FDOT 2017





TAYLOR ENGINEERING INC.
 10199 SOUTHSIDE BOULEVARD
 SUITE 310
 JACKSONVILLE, FL 32256
 CERTIFICATE OF AUTHORIZATION # 4815

APPENDIX E
 FIGURE 11
 SANDERS BOULEVARD PROPERTY - PROPOSED FLUCCS
 COLLIER COUNTY CWIP
 COLLIER COUNTY, FLORIDA

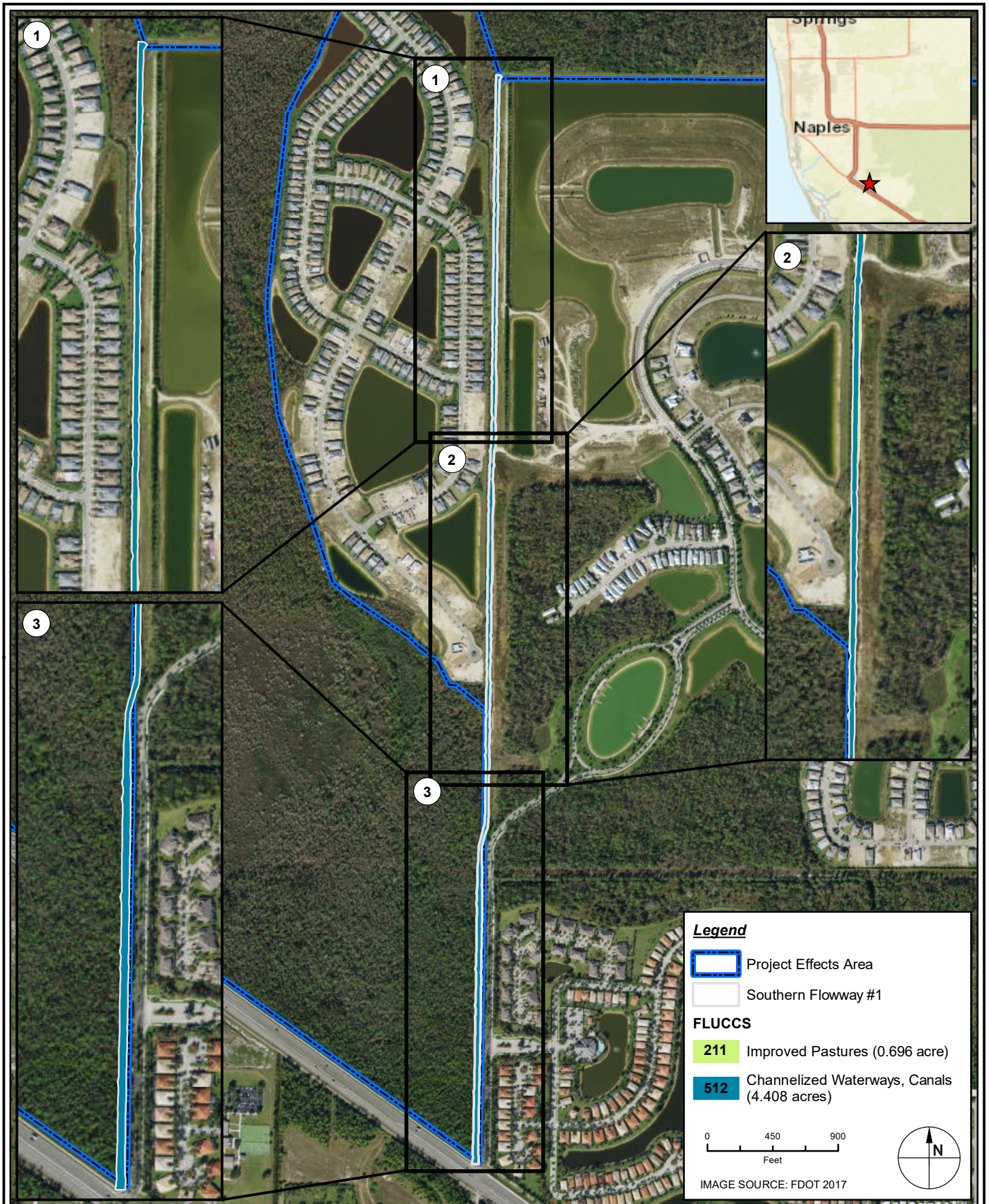
PROJECT	C2018-052
DRAWN BY	KM
SHEET	
DATE	APR 2020





TAYLOR ENGINEERING INC.
 10199 SOUTHSIDE BOULEVARD
 SUITE 310
 JACKSONVILLE, FL 32256
 CERTIFICATE OF AUTHORIZATION # 4815

APPENDIX E
 FIGURE 12
 PEDESTRIAN PATH - PROPOSED FLUCCS
 COLLIER COUNTY CWIP
 COLLIER COUNTY, FLORIDA

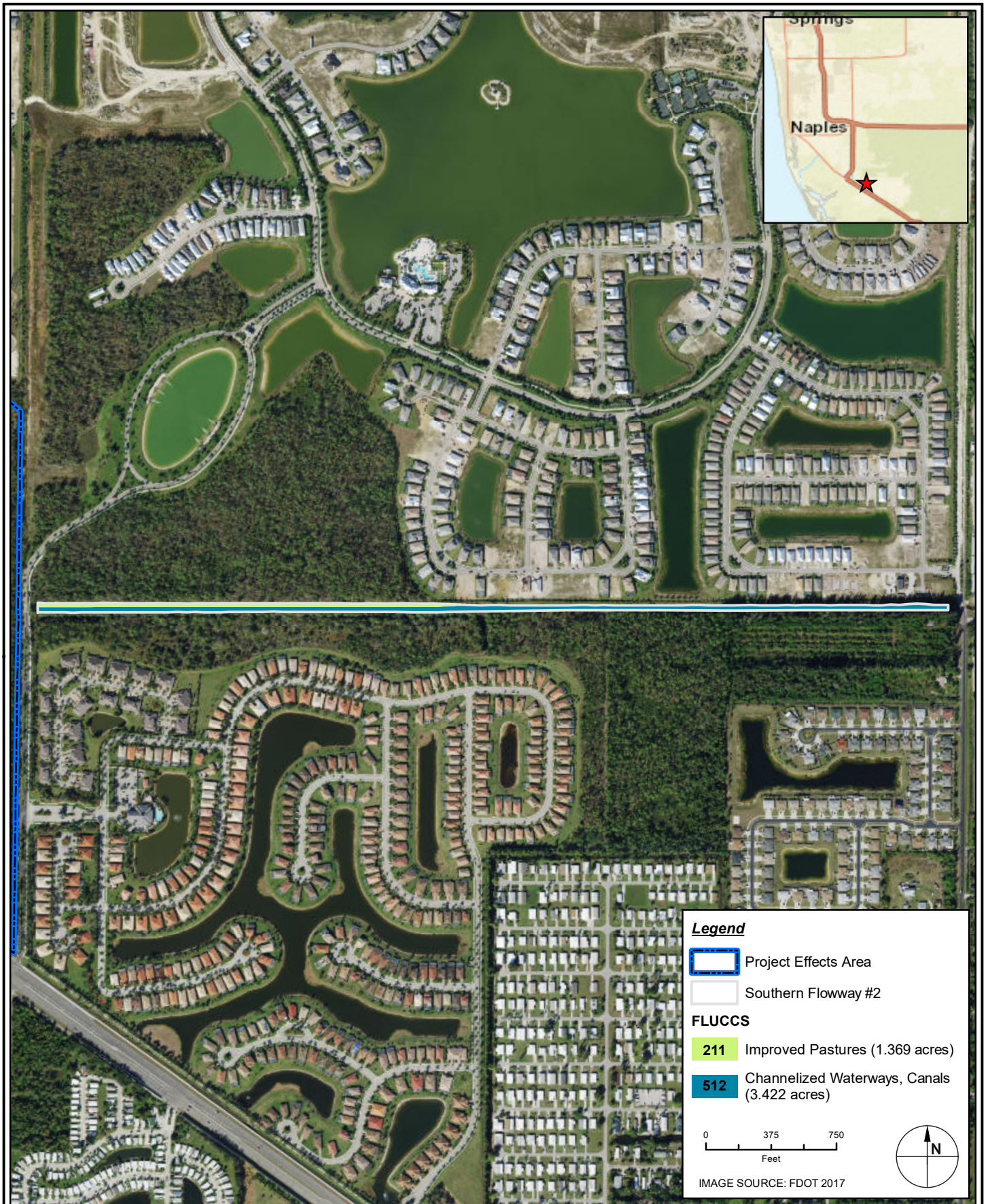
PROJECT	C2018-052
DRAWN BY	KM
SHEET	
DATE	APR 2020






TAYLOR ENGINEERING INC.
 10199 SOUTHSIDE BOULEVARD
 SUITE 310
 JACKSONVILLE, FL 32256
 CERTIFICATE OF AUTHORIZATION # 4815

APPENDIX E
 FIGURE 13
 SOUTHERN FLOWWAY #1 - PROPOSED FLUCCS
 COLLIER COUNTY CWIP
 COLLIER COUNTY, FLORIDA



PROJECT	C2018-052
DRAWN BY	KM
SHEET	
DATE	APR 2020



Legend

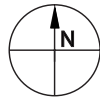
-  Project Effects Area
-  Southern Flowway #2

FLUCCS

-  211 Improved Pastures (1.369 acres)
-  512 Channelized Waterways, Canals (3.422 acres)

0 375 750
Feet

IMAGE SOURCE: FDOT 2017




TAYLOR ENGINEERING INC.
 10199 SOUTHSIDE BOULEVARD
 SUITE 310
 JACKSONVILLE, FL 32256
 CERTIFICATE OF AUTHORIZATION # 4815

APPENDIX E
 FIGURE 14
 SOUTHERN FLOWWAY #2 - PROPOSED FLUCCS
 COLLIER COUNTY CWIP
 COLLIER COUNTY, FLORIDA

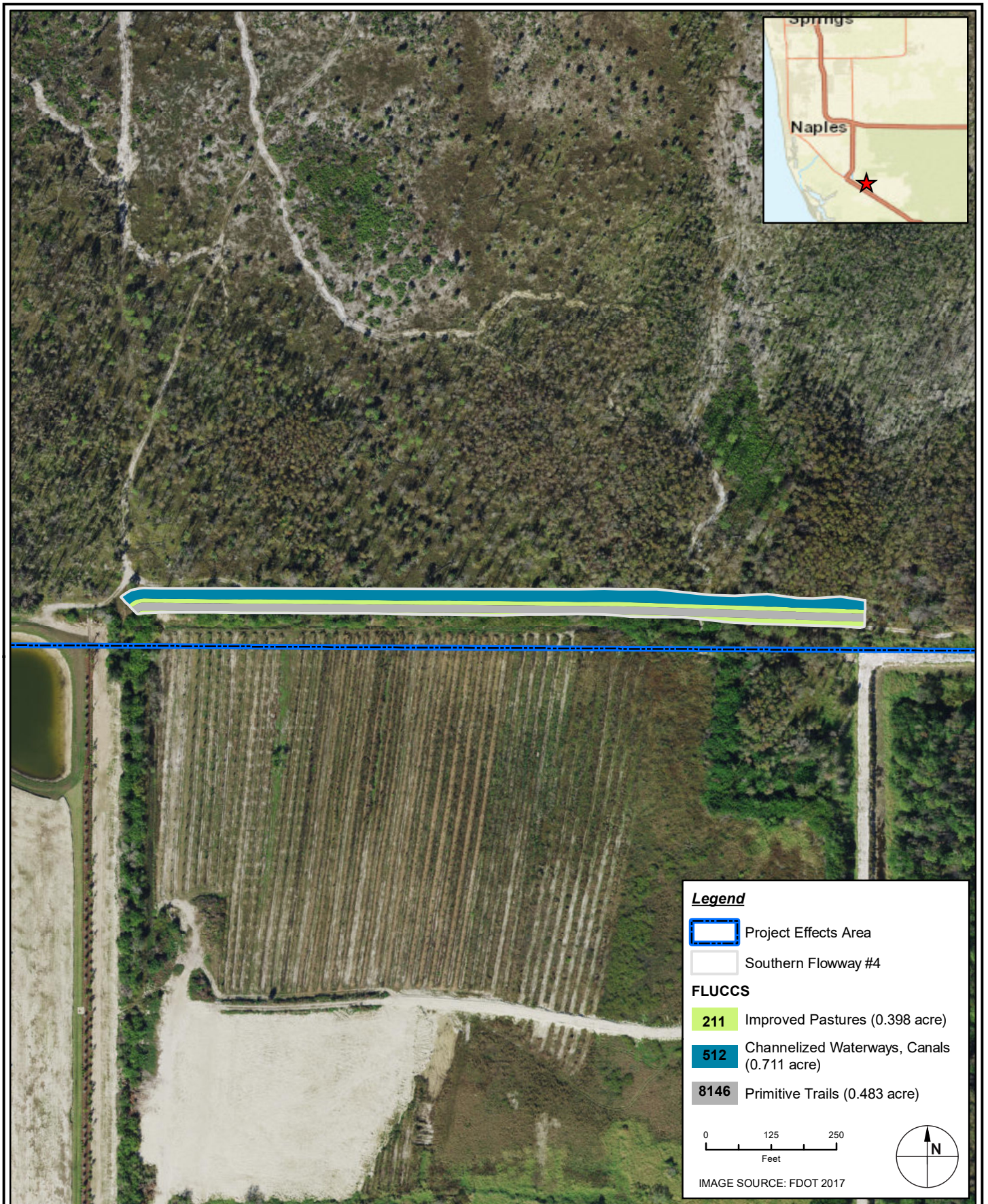
PROJECT	C2018-052
DRAWN BY	KM
SHEET	
DATE	APR 2020




TAYLOR ENGINEERING INC.
 10199 SOUTHSIDE BOULEVARD
 SUITE 310
 JACKSONVILLE, FL 32256
 CERTIFICATE OF AUTHORIZATION # 4815

APPENDIX E
 FIGURE 15
 SOUTHERN FLOWWAY #3 - PROPOSED FLUCCS
 COLLIER COUNTY CWIP
 COLLIER COUNTY, FLORIDA

PROJECT	C2018-052
DRAWN BY	KM
SHEET	
DATE	APR 2020



TAYLOR ENGINEERING INC.
 10199 SOUTHSIDE BOULEVARD
 SUITE 310
 JACKSONVILLE, FL 32256
 CERTIFICATE OF AUTHORIZATION # 4815

APPENDIX E
 FIGURE 16
 SOUTHERN FLOWWAY #4 - PROPOSED FLUCCS
 COLLIER COUNTY CWIP
 COLLIER COUNTY, FLORIDA

PROJECT	C2018-052
DRAWN BY	KM
SHEET	
DATE	APR 2020