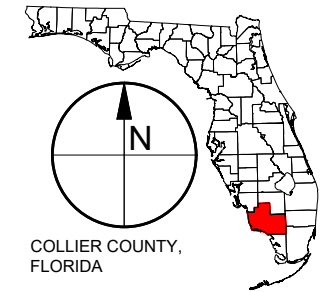


DRAFT BIOLOGICAL ASSESSMENT

COLLIER COUNTY
COMPREHENSIVE WATERSHED IMPROVEMENT PLAN
COLLIER COUNTY, FLORIDA

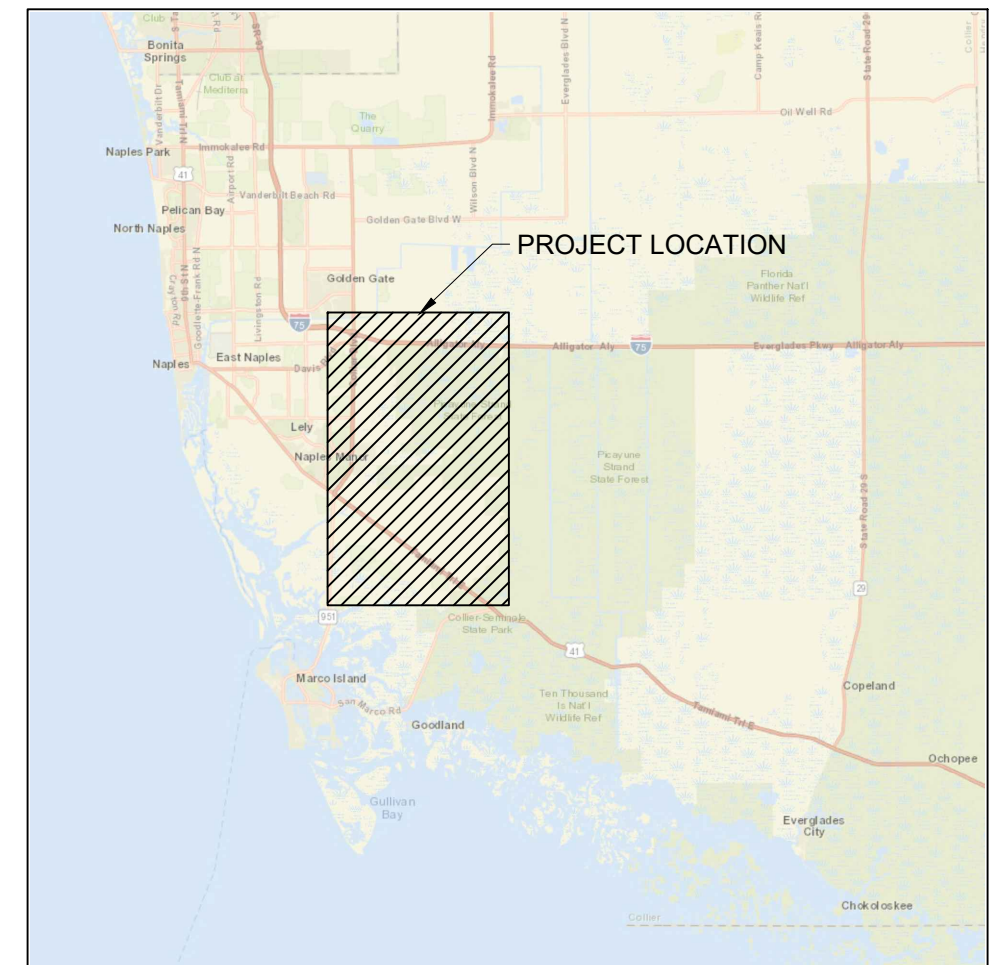
APPENDIX A: PERMIT DRAWINGS

CONCEPTUAL PLANS FOR THE COLLIER COUNTY COMPREHENSIVE WATERSHED IMPROVEMENT PLAN COLLIER COUNTY, FLORIDA




DRAWING INDEX

- FIG 1 TITLE SHEET
- FIG 2 PROJECT OVERVIEW
- FIG 3 NORTH BELLE MEADE FLOW-WAY PLAN
- FIG 4 NORTH BELLE MEADE FLOW-WAY PUMP STATION PLAN
- FIG 5 NORTH BELLE MEADE FLOW-WAY DISCHARGE PLAN
- FIG 6 NORTH BELLE MEAD FLOW-WAY TYPICAL CROSS-SECTIONS
- FIG 7 INTERSTATE 75 CANALS IMPROVEMENT PLAN
- FIG 8 SOUTH BELLE MEADE FLOW-WAY AND SPREADER PLAN AND TYPICAL SECTIONS
- FIG 9 SOUTH BELLE MEADE FLOW-WAY PUMP STATION PLAN
- FIG 10 SANDERS PROPERTY
- FIG 11 SIX L'S/U.S. 41 FLOW-WAYS AND CONVEYANCE IMPROVEMENTS PLAN
- FIG 12 NAPLES RESERVE FLOW-WAYS AND PEDESTRIAN PATH
- FIG 13 NAPLES RESERVE FLOW-WAY #1 CROSS-SECTIONS
- FIG 14 NAPLES RESERVE FLOW-WAY #2 AND PEDESTRIAN PATH CROSS-SECTIONS
- FIG 15 WEIR DETAILS

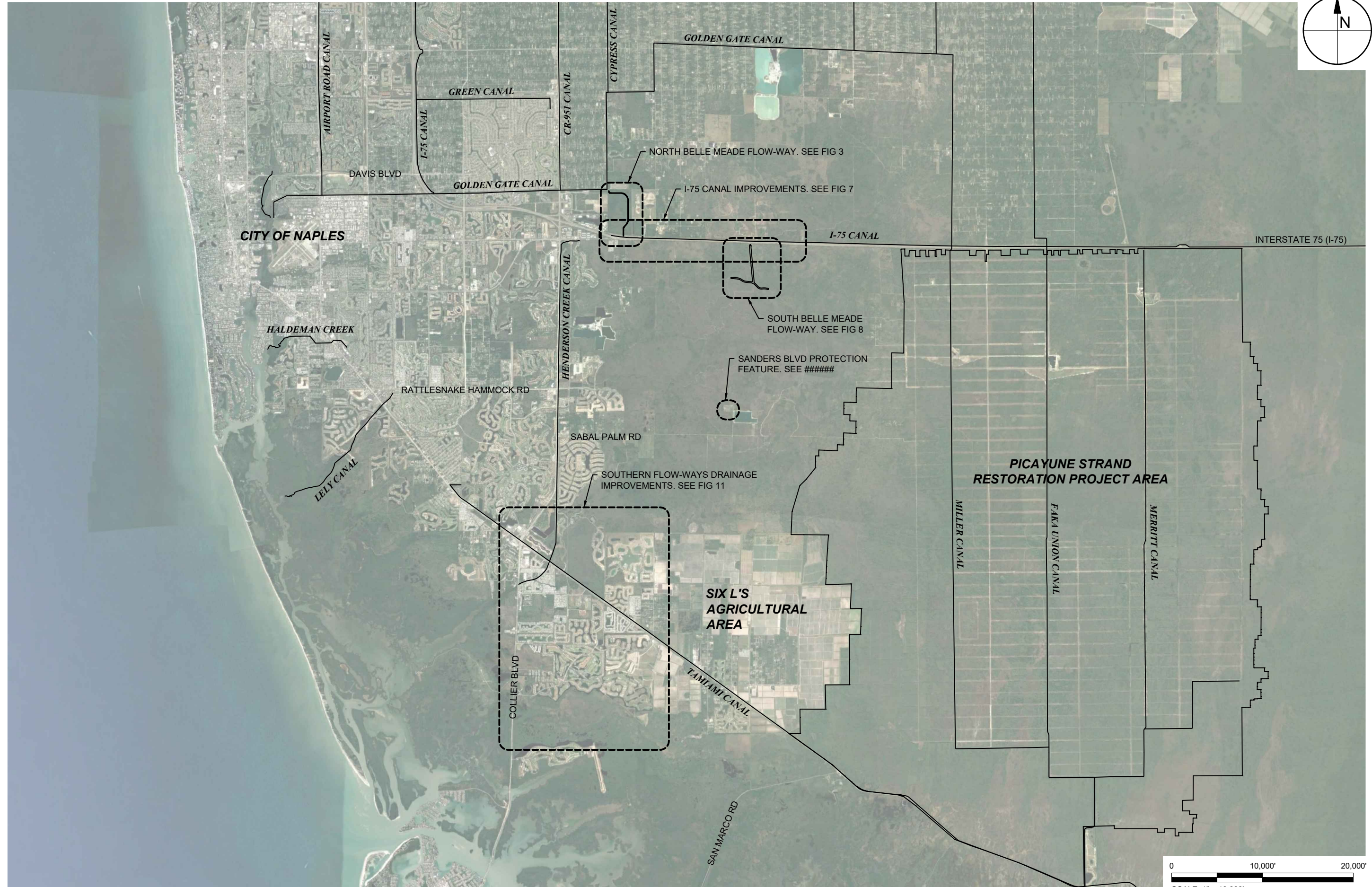


VICINITY MAP
1"= 8 MILES

PRELIMINARY DRAWINGS: THESE DRAWINGS ARE NOT IN FINAL FORM, BUT ARE BEING TRANSMITTED FOR AGENCY REVIEW.

 <p>TAYLOR ENGINEERING INC. 10199 SOUTHSIDE BLVD SUITE 310 JACKSONVILLE, FLORIDA 32256 CERTIFICATE OF AUTHORIZATION # 4815</p>	<p>SEAL</p> <p style="font-size: 2em; font-weight: bold;">DRAFT</p> <p>ENG _____ DATE _____</p>
--	---

ANTON FLEWELLING X:\SYS\PROJECTS\C2018-052-COLLIER\FIGURES\C2018-052-F-PROJECT OVERVIEW.DWG 1/27/2020 10:35:56 PM



PROJECT	C2018-052
DRAWN BY	AF
SHEET	2 of 15
DATE	JAN 2020
SEAL	ENG

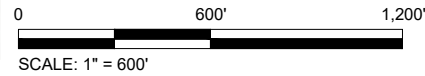
DRAFT

FIGURE 2
 PROJECT OVERVIEW
 COMPREHENSIVE WATERSHED IMPROVEMENT PLAN
 COLLIER COUNTY, FLORIDA

TAYLOR ENGINEERING INC.
 10199 SOUTHSIDE BLVD
 SUITE 310
 JACKSONVILLE, FLORIDA 32256
 REGISTRY # 4815

PRELIMINARY DRAWINGS: THESE DRAWINGS ARE NOT IN FINAL FORM, BUT ARE BEING TRANSMITTED FOR AGENCY REVIEW.

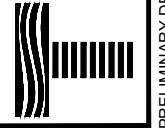
ANTON FLEWELLING X:\SYS\PROJECTS\C2018-052_COLLIERS\FIGURES\C2018-052-F-NBMFW PLAN.DWG 1/27/2020 10:36:26 PM



PROJECT	C2018-052	SEAL	
DRAWN BY	AF		
SHEET	3 of 15		
DATE	JAN 2020	ENG	

FIGURE 3
NORTH BELLE MEADE FLOW-WAY PLAN
COMPREHENSIVE WATERSHED IMPROVEMENT PLAN
COLLIER COUNTY, FLORIDA

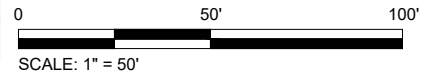
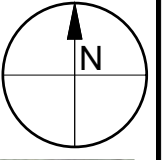
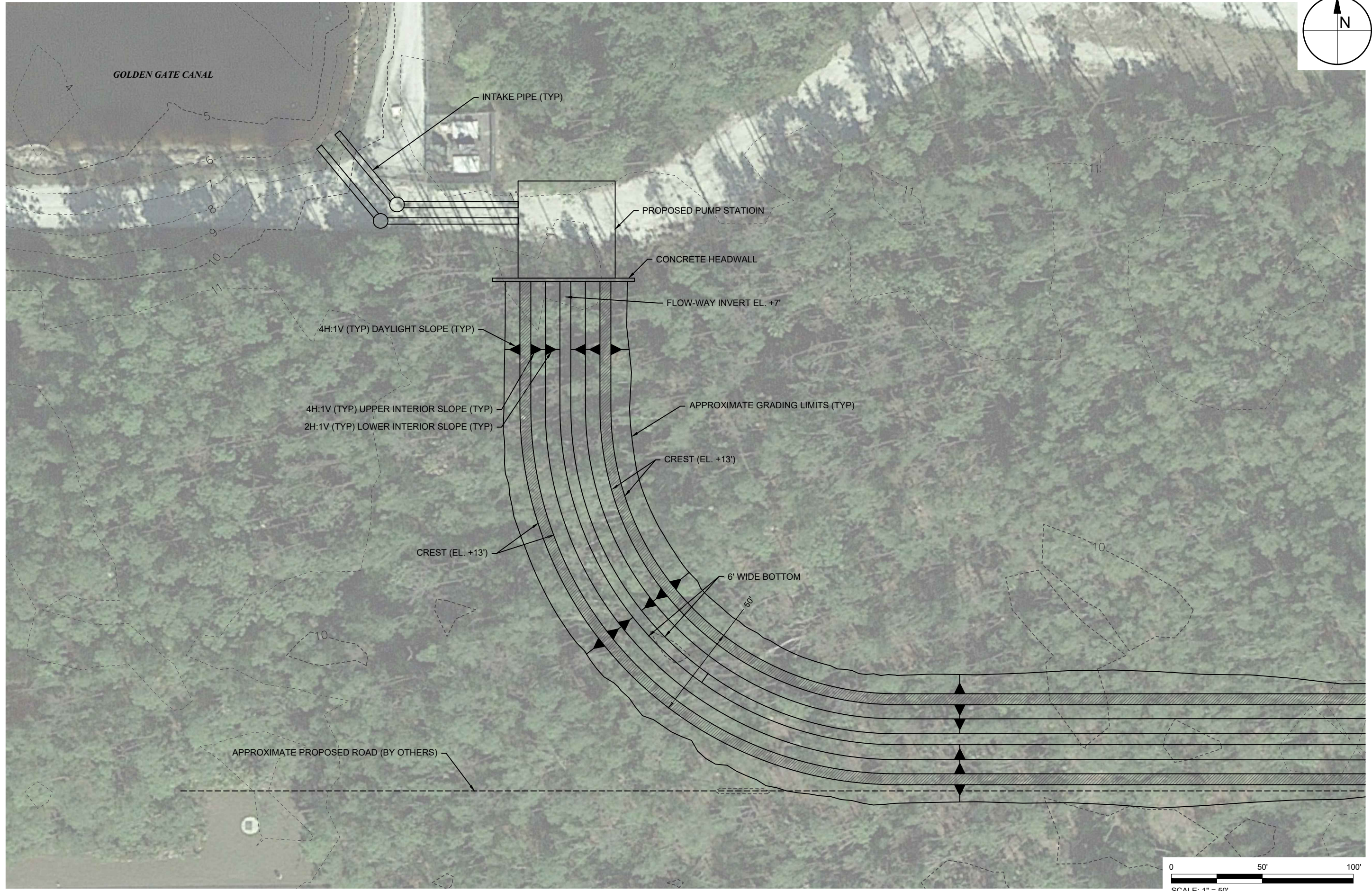
TAYLOR ENGINEERING INC.
 10199 SOUTHSIDE BLVD
 SUITE 310
 JACKSONVILLE, FLORIDA 32256
 REGISTRY # 4815



DRAFT

PRELIMINARY DRAWINGS: THESE DRAWINGS ARE NOT IN FINAL FORM, BUT ARE BEING TRANSMITTED FOR AGENCY REVIEW.

ANTON FLEWELLING X:\SYS\PROJECTS\2018-052-COLLIERCO\FIGURES\2018-052-F-NBMFW NORTH PLAN DETAIL.DWG 1/27/2020 10:36:55 PM



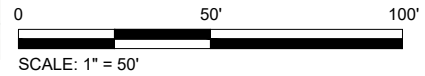
PROJECT	C2018-052	SEAL	
DRAWN BY	AF		
SHEET	4 of 15		
DATE	JAN 2020	ENG	

FIGURE 4
 NORTH BELLE MEADE FLOW-WAY PUMP STATION PLAN
 COMPREHENSIVE WATERSHED IMPROVEMENT PLAN
 COLLIER COUNTY, FLORIDA

TAYLOR ENGINEERING INC.
 10199 SOUTHSIDE BLVD
 SUITE 310
 JACKSONVILLE, FLORIDA 32256
 REGISTRY # 4815

PRELIMINARY DRAWINGS: THESE DRAWINGS ARE NOT IN FINAL FORM, BUT ARE BEING TRANSMITTED FOR AGENCY REVIEW.

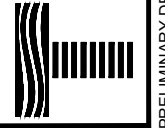
ANTON FLEWELLING X:\SYS\PROJECTS\2018-052-F-NBMFW SOUTH PLAN DETAIL.DWG 1/27/2020 10:37:24 PM



PROJECT	C2018-052
DRAWN BY	AF
SHEET	5 of 15
DATE	JAN 2020

FIGURE 5
 NORTH BELLE MEADE FLOW-WAY DISCHARGE PLAN
 COMPREHENSIVE WATERSHED IMPROVEMENT PLAN
 COLLIER COUNTY, FLORIDA

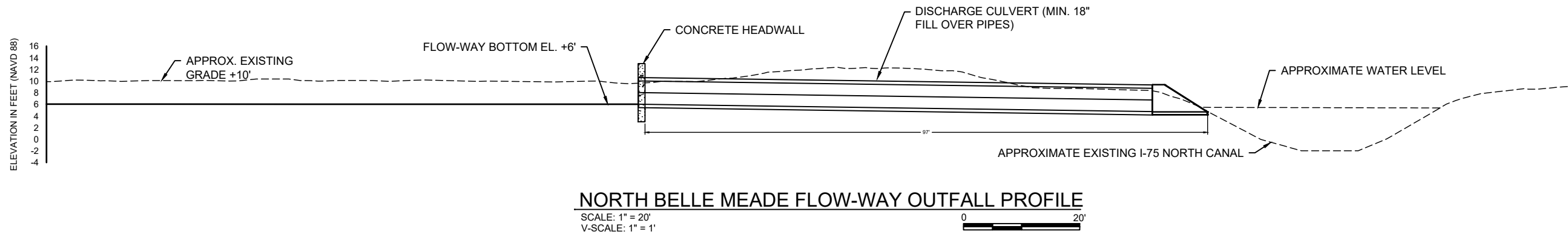
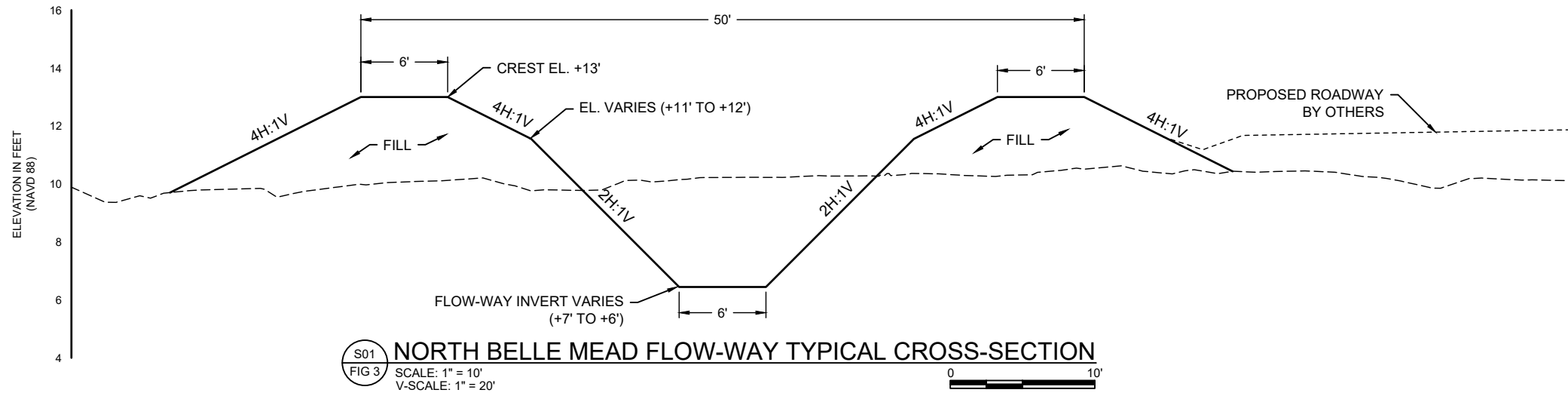
TAYLOR ENGINEERING INC.
 10199 SOUTHSIDE BLVD
 SUITE 310
 JACKSONVILLE, FLORIDA 32256
 REGISTRY # 4815

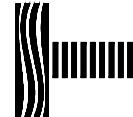


DRAFT

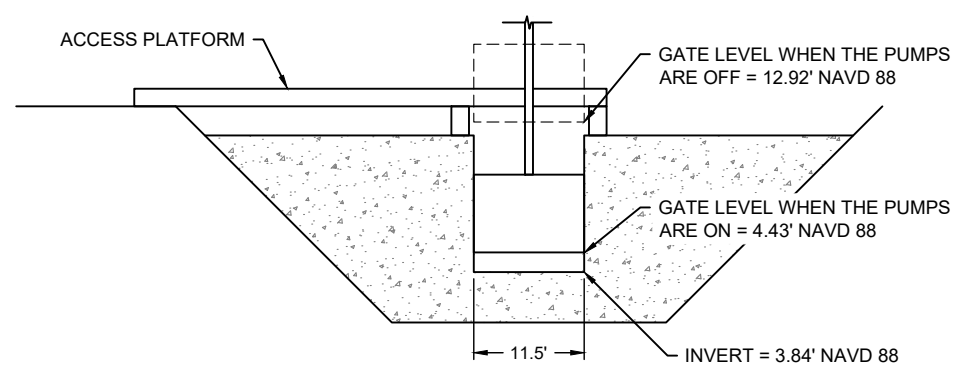
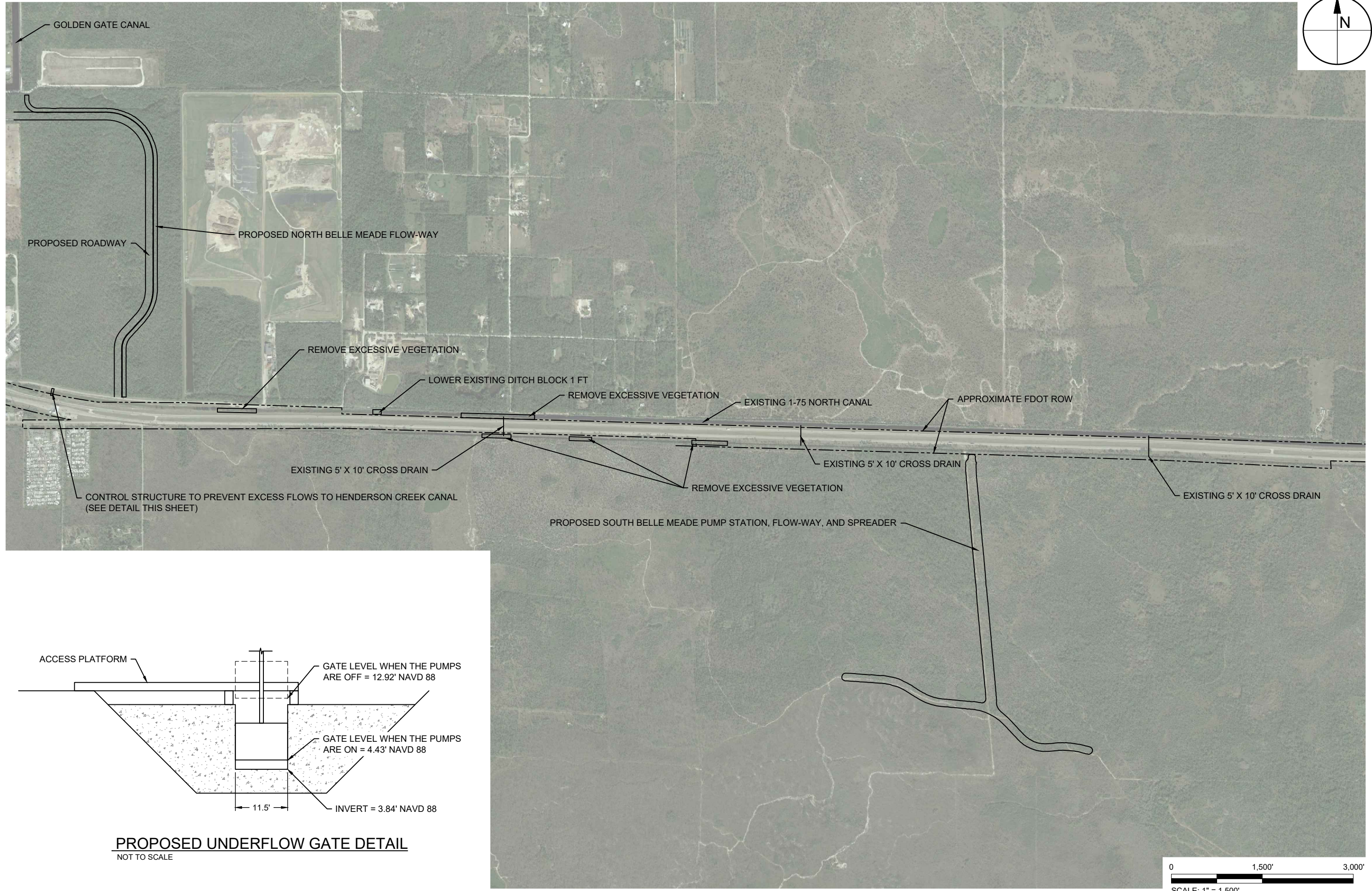
PRELIMINARY DRAWINGS: THESE DRAWINGS ARE NOT IN FINAL FORM, BUT ARE BEING TRANSMITTED FOR AGENCY REVIEW.

ANTON FLEWELLING X:\ISYS\PROJECTS\C2018-052_COLLIERCO\FIGURES\C2018-052-F-NBMFW TYPICAL SECTIONS.DWG 1/27/2020 10:38:01 PM

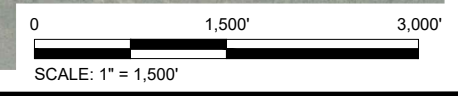


 TAYLOR ENGINEERING INC. 10199 SOUTHSIDE BLVD SUITE 310 JACKSONVILLE, FLORIDA 32256 REGISTRY # 4815	FIGURE 6 NORTH BELLE MEAD FLOW-WAY TYPICAL CROSS-SECTIONS COMPREHENSIVE WATERSHED IMPROVEMENT PLAN COLLIER COUNTY, FLORIDA		PROJECT: C2018-052 DRAWN BY: AF SHEET: 6 of 15 DATE: JAN 2020	SEAL: DRAFT ENG
	PRELIMINARY DRAWINGS: THESE DRAWINGS ARE NOT IN FINAL FORM, BUT ARE BEING TRANSMITTED FOR AGENCY REVIEW.			DATE

ANTON FLEWELLING X:\SYS\PROJECTS\C2018-052_COLLIER\FIGURES\C2018-052-F-175 CANAL IMPROVEMENTS.DWG 1/27/2020 10:38:12 PM



PROPOSED UNDERFLOW GATE DETAIL
NOT TO SCALE



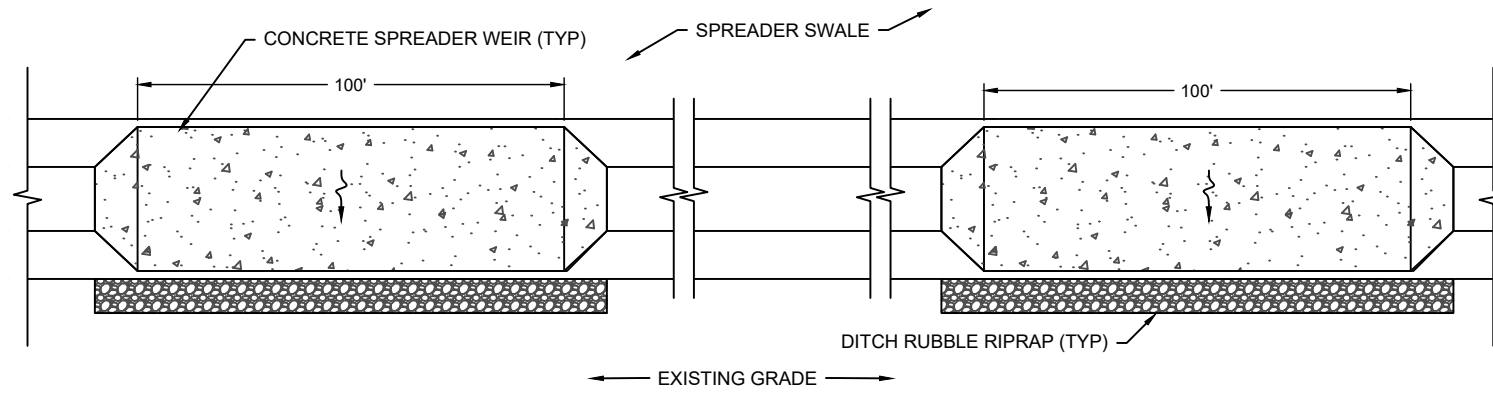
PROJECT	C2018-052
DRAWN BY	AF
SHEET	7 of 15
DATE	JAN 2020

FIGURE 7
INTERSTATE 75 CANALS IMPROVEMENT PLAN
COMPREHENSIVE WATERSHED IMPROVEMENT PLAN
COLLIER COUNTY, FLORIDA

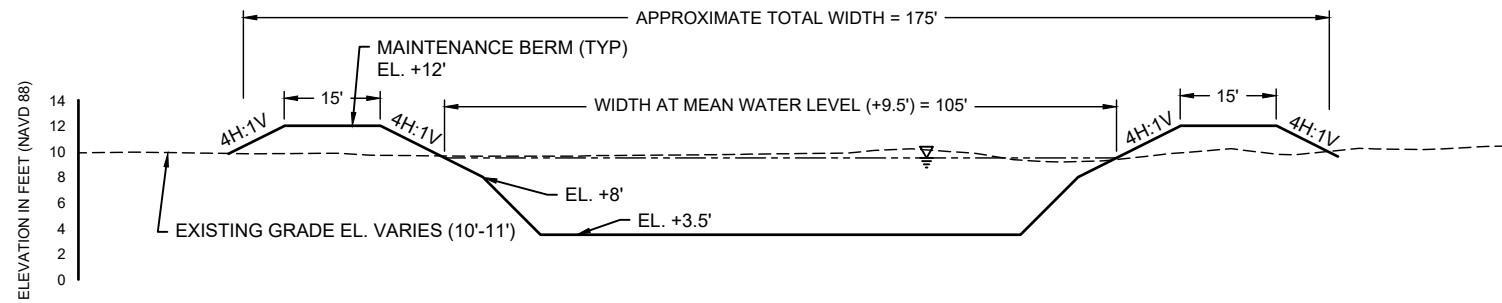
TAYLOR ENGINEERING INC.
10199 SOUTHSIDE BLVD
SUITE 310
JACKSONVILLE, FLORIDA 32256
REGISTRY # 4815

DRAFT

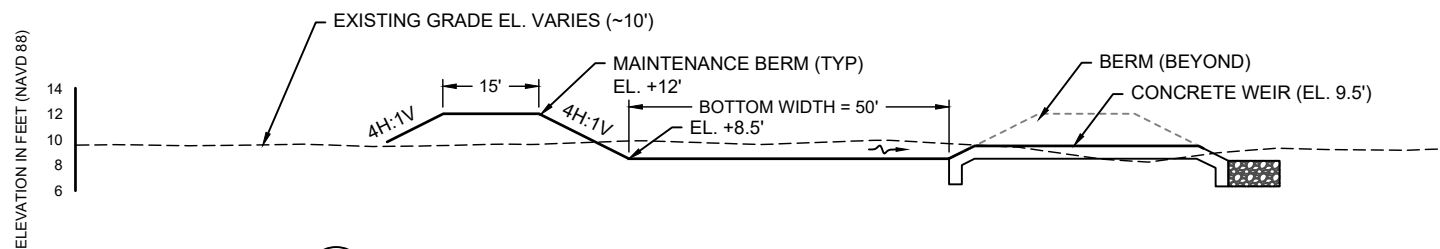
PRELIMINARY DRAWINGS: THESE DRAWINGS ARE NOT IN FINAL FORM, BUT ARE BEING TRANSMITTED FOR AGENCY REVIEW.



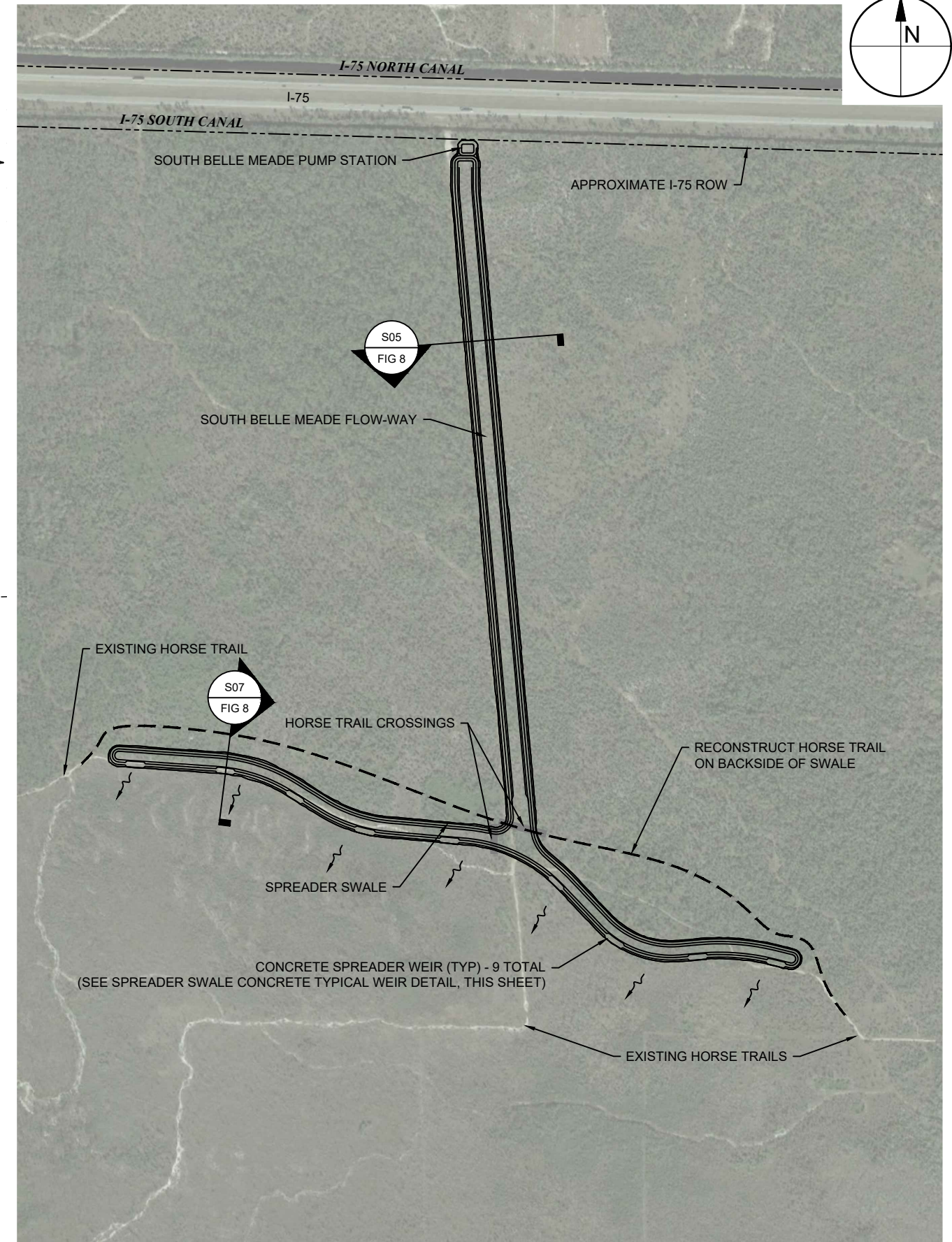
SPREADER SWALE CONCRETE TYPICAL WEIR DETAIL
NOT TO SCALE



TYPICAL SOUTH BELLE MEADE FLOW-WAY CROSS-SECTION
SCALE: 1" = 30'
V-SCALE: 1" = 15'



TYPICAL SPREADER SWALE CROSS-SECTION
SCALE: 1" = 30'
V-SCALE: 1" = 15'



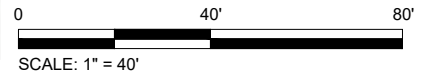
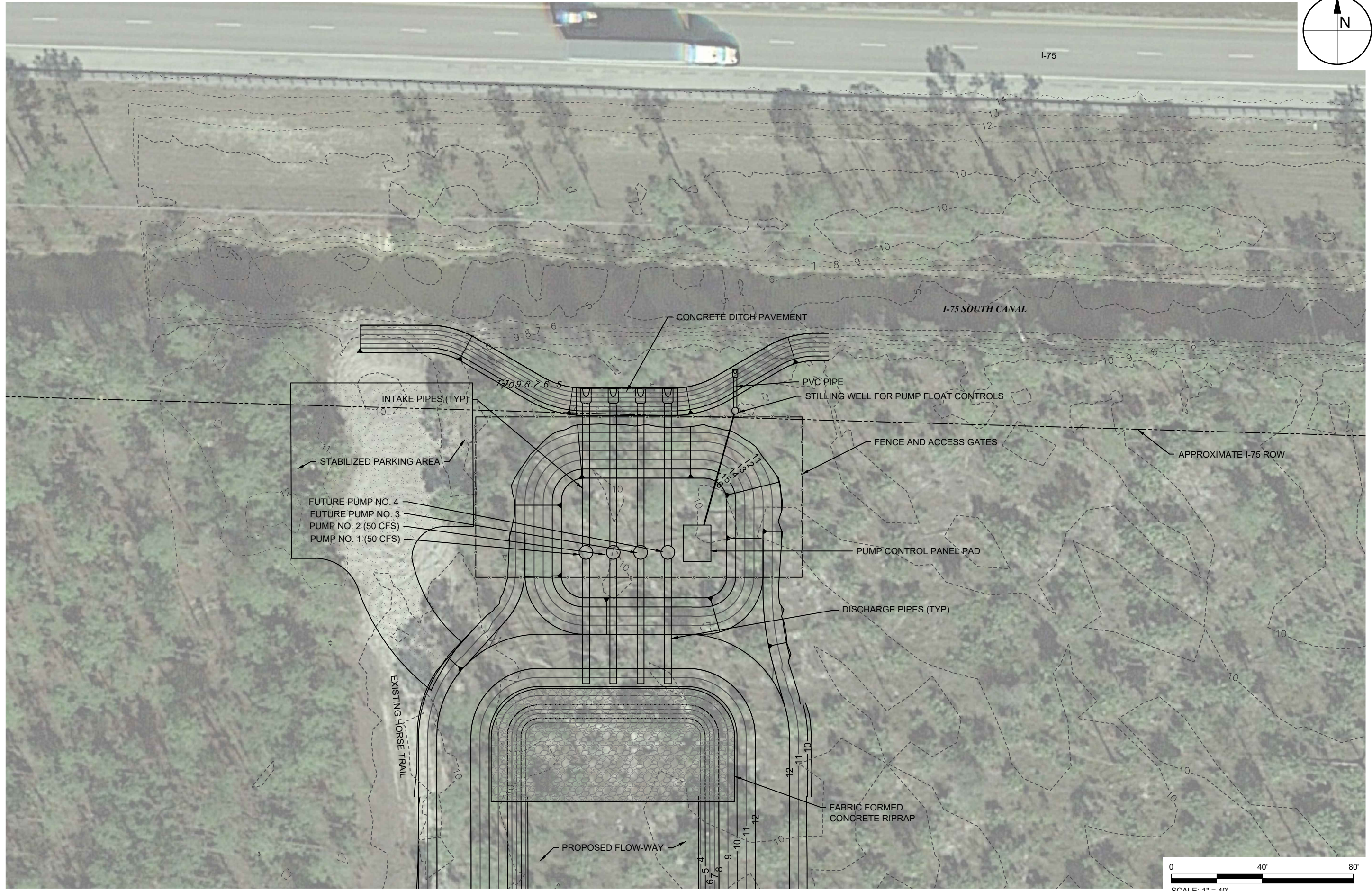
SOUTH BELLE MEADE FLOW-WAY PLAN
SCALE: 1" = 800'
V-SCALE: 1" = 1'

ANTON FLEWELLING X:\SYS\PROJECTS\2018-052-COLLIER\FIGURES\2018-052-F-SBMFW PLAN.DWG 12/7/2020 10:38:28 PM

<p>TAYLOR ENGINEERING INC. 10199 SOUTHSIDE BLVD SUITE 310 JACKSONVILLE, FLORIDA 32256 REGISTRY # 4815</p>		<p>PROJECT: C2018-052</p>	
		<p>DATE: JAN 2020</p>	
<p>DRAWN BY: AF</p>		<p>SHEET: 8 of 15</p>	
<p>FIGURE 8 SOUTH BELLE MEADE FLOW-WAY AND SPREADER PLAN AND TYPICAL SECTIONS</p>		<p>COMPREHENSIVE WATERSHED IMPROVEMENT PLAN COLLIER COUNTY, FLORIDA</p>	
<p>DRAFT</p>		<p>ENG</p>	

PRELIMINARY DRAWINGS: THESE DRAWINGS ARE NOT IN FINAL FORM, BUT ARE BEING TRANSMITTED FOR AGENCY REVIEW.

ANTON FLEWELLING X:\SYS\PROJECTS\C2018-052_COLLIERCO\FIGURES\C2018-052-F-SBMFW NORTH DETAIL PLAN.DWG 1/27/2020 10:38:45 PM



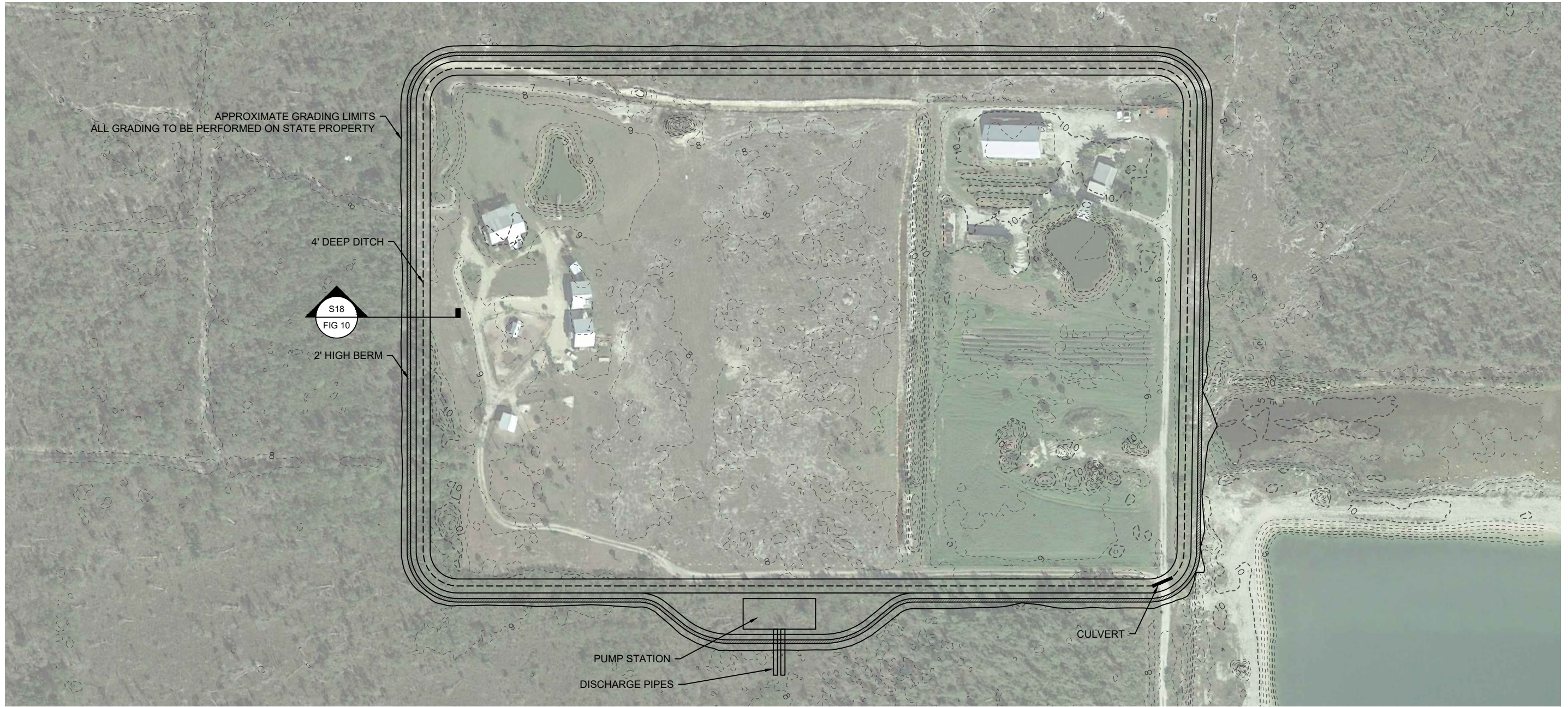
PROJECT	C2018-052
SEAL	
DRAWN BY	AF
SHEET	9 of 15
DATE	JAN 2020
ENG	

FIGURE 9
 SOUTH BELLE MEADE FLOW-WAY PUMP STATION PLAN
 COMPREHENSIVE WATERSHED IMPROVEMENT PLAN
 COLLIER COUNTY, FLORIDA

TAYLOR ENGINEERING INC.
 10199 SOUTHSIDE BLVD
 SUITE 310
 JACKSONVILLE, FLORIDA 32256
 REGISTRY # 4815

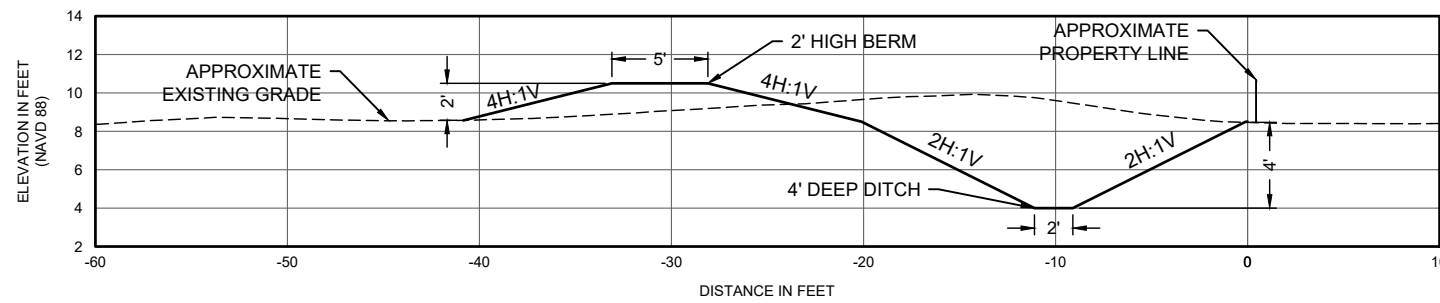
PRELIMINARY DRAWINGS: THESE DRAWINGS ARE NOT IN FINAL FORM, BUT ARE BEING TRANSMITTED FOR AGENCY REVIEW.

ANTON FLEWELLING X:\SYS\PROJECTS\C2018-052_COLLIERCO\FIGURES\C2018-052-F-SANDERS.DWG 1/27/2020 10:38:59 PM



SANDERS PROPERTY PLAN VIEW

SCALE: 1" = 150'

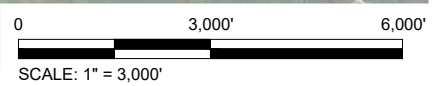
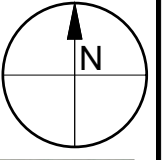
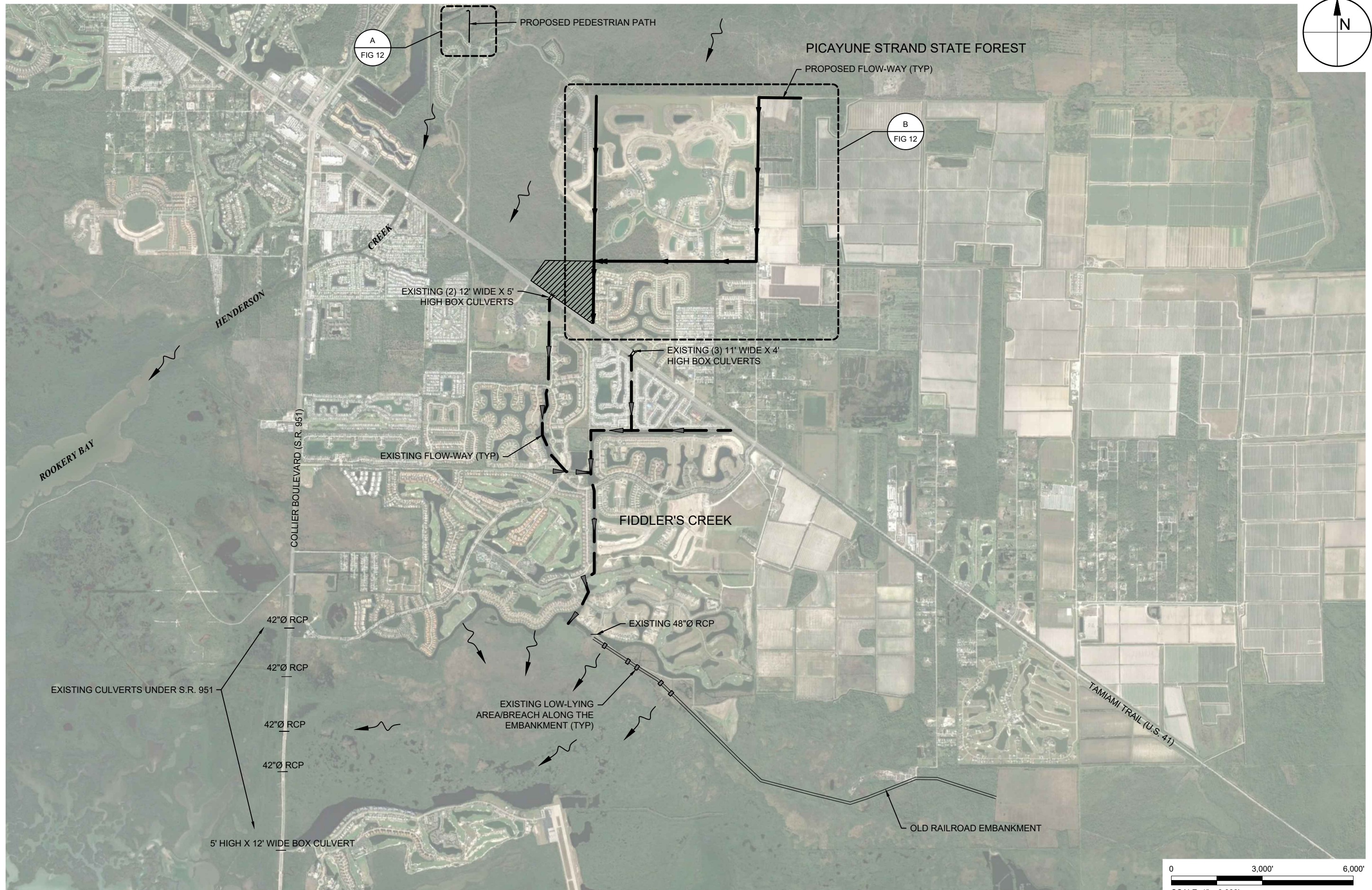


TYPICAL CROSS-SECTION

SCALE: 1" = 10'



ANTON FLEWELLING X:\SYS\PROJECTS\2018-052_COLLIERCO\FIGURES\2018-052-F-SIX L.S. DWG 1/27/2020 10:39:07 PM

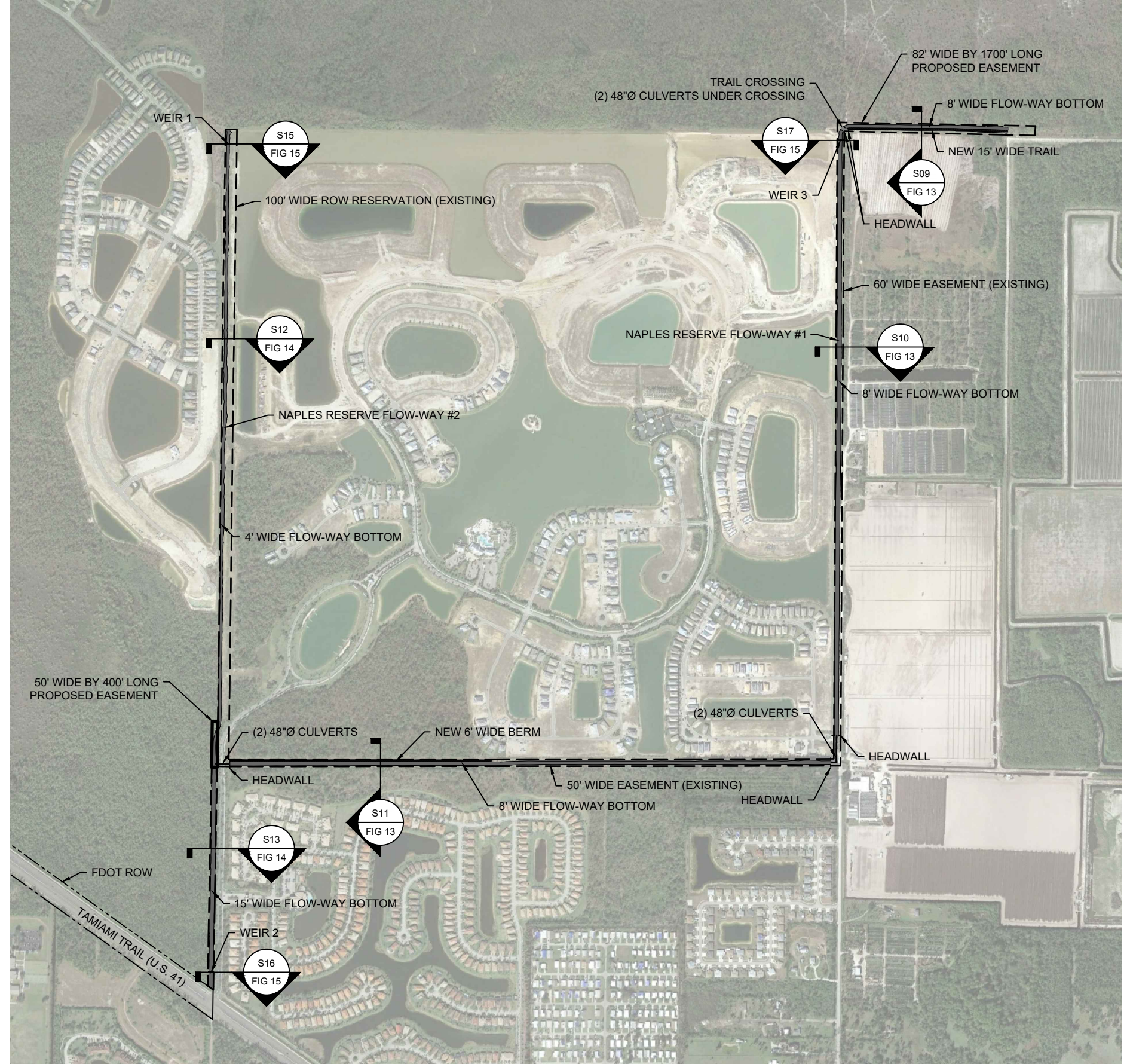


TAYLOR ENGINEERING INC. 10199 SOUTHSIDE BLVD SUITE 310 JACKSONVILLE, FLORIDA 32256 REGISTRY # 4815	PROJECT: C2018-052 DRAWN BY: AF SHEET: 11 of 15 DATE: JAN 2020	SEAL: ENG
	FIGURE 11 SIX L.S. U.S. 41 FLOW-WAYS AND CONVEYANCE IMPROVEMENTS PLAN COMPREHENSIVE WATERSHED IMPROVEMENT PLAN COLLIER COUNTY, FLORIDA	

DRAFT
 PRELIMINARY DRAWINGS: THESE DRAWINGS ARE NOT IN FINAL FORM, BUT ARE BEING TRANSMITTED FOR AGENCY REVIEW.



A PROPOSED PEDESTRIAN PATH PLAN
SCALE: 1" = 500'



B PROPOSED FLOW-WAY PLAN
SCALE: 1" = 1,000'

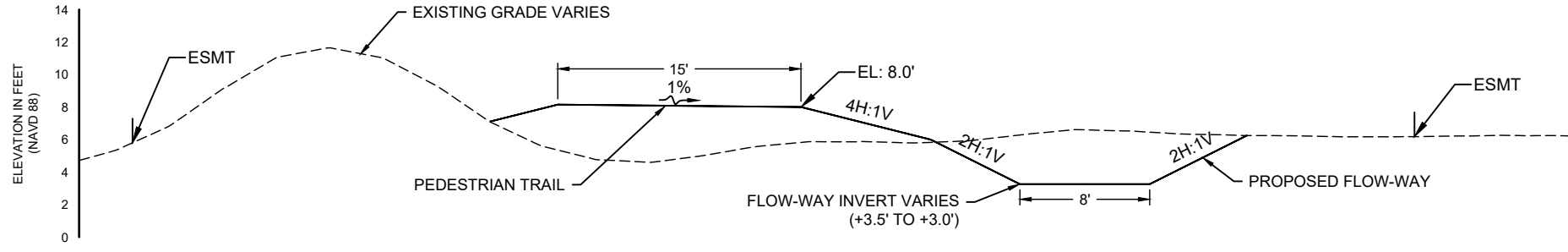


ANTON FLEWELLING X:\SYS\PROJECTS\2018-052-F-SOUTHERN\FLOWWAYS.DWG 11/27/2020 10:39:11 PM

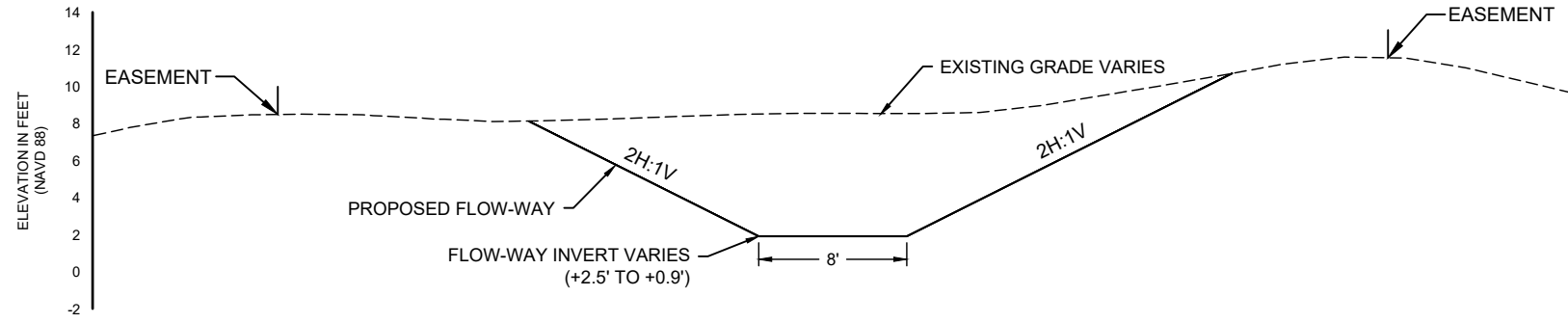
<p>TAYLOR ENGINEERING INC. 10199 SOUTHSIDE BLVD SUITE 310 JACKSONVILLE, FLORIDA 32256 REGISTRY # 4815</p>		<p>PROJECT: C2018-052</p>		<p>DATE: JAN 2020</p>
		<p>DRAWN BY: AF</p>	<p>SHEET: 12 of 15</p>	<p>DATE: JAN 2020</p>
<p>FIGURE 12 NAPLES RESERVE FLOW-WAYS AND PEDESTRIAN PATH COMPREHENSIVE WATERSHED IMPROVEMENT PLAN COLLIER COUNTY, FLORIDA</p>				
<p>DRAFT</p>				

PRELIMINARY DRAWINGS: THESE DRAWINGS ARE NOT IN FINAL FORM, BUT ARE BEING TRANSMITTED FOR AGENCY REVIEW.

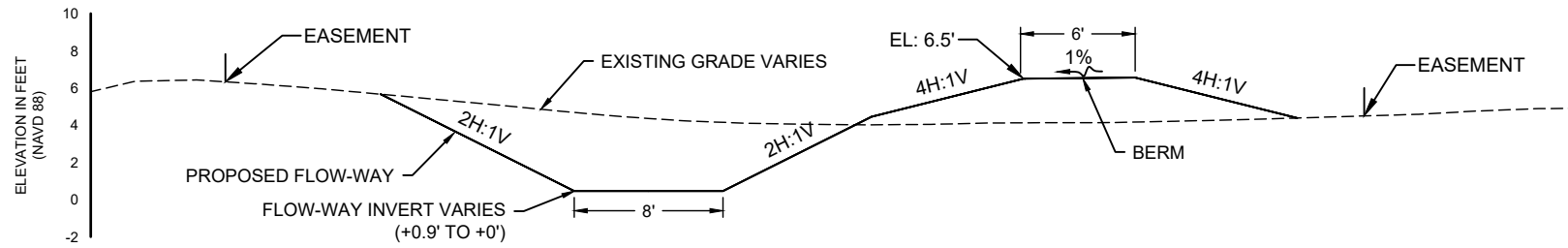
ANTON FLEWELLING X:\ISYS\PROJECTS\C2018-052_COLLIERCO\FIGURES\C2018-052-F-SOUTHERNFLOWWAY SECTIONS.DWG 1/27/2020 10:39:19 PM



S09 SECTION 9
FIG 12 SCALE: 1" = 10' 0 10'



S10 SECTION 10
FIG 12 SCALE: 1" = 10' 0 10'



S11 SECTION 11
FIG 12 SCALE: 1" = 10' 0 10'

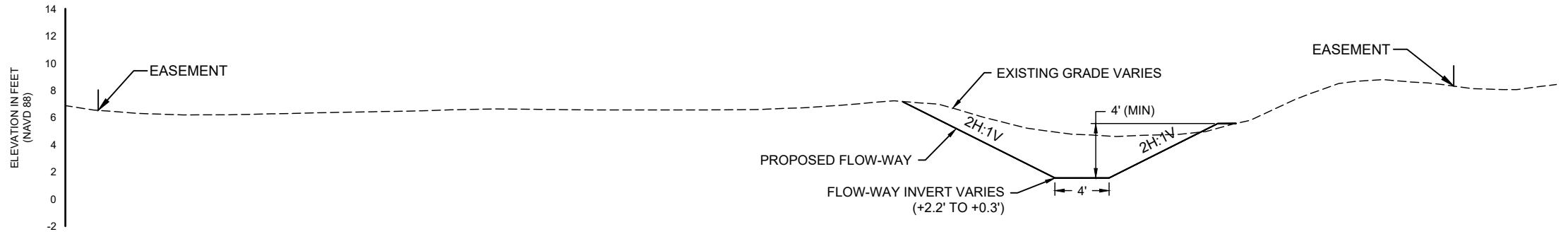
PROJECT	C2018-052
SEAL	
DRAWN BY	AF
SHEET	13 of 15
DATE	JAN 2020
ENG	

FIGURE 13
NAPLES RESERVE FLOW-WAY #1 CROSS-SECTIONS
COMPREHENSIVE WATERSHED IMPROVEMENT PLAN
COLLIER COUNTY, FLORIDA

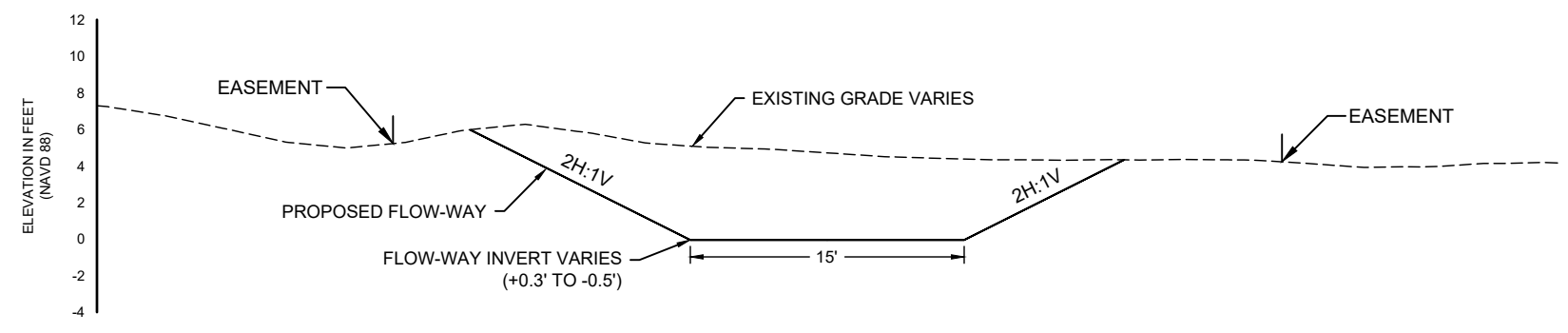
TAYLOR ENGINEERING INC.
10199 SOUTHSIDE BLVD
SUITE 310
JACKSONVILLE, FLORIDA 32256
REGISTRY # 4815

PRELIMINARY DRAWINGS: THESE DRAWINGS ARE NOT IN FINAL FORM, BUT ARE BEING TRANSMITTED FOR AGENCY REVIEW.

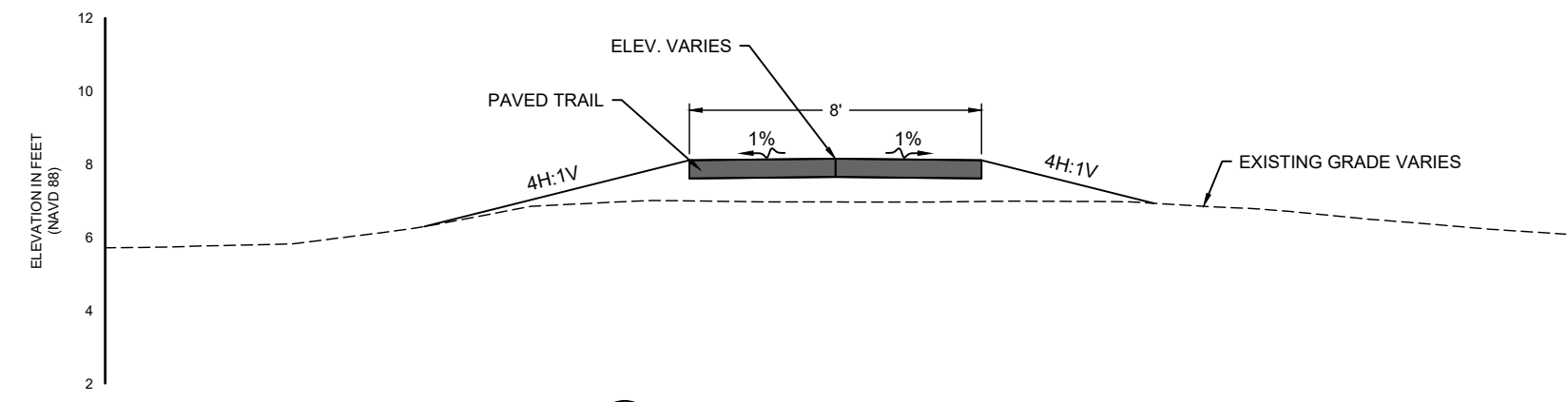
DRAFT



SECTION 12
 S12
 FIG 12 SCALE: 1" = 10' 0 10'

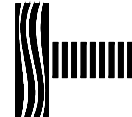


SECTION 13
 S13
 FIG 12 SCALE: 1" = 10' 0 10'

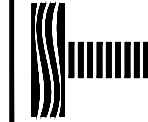
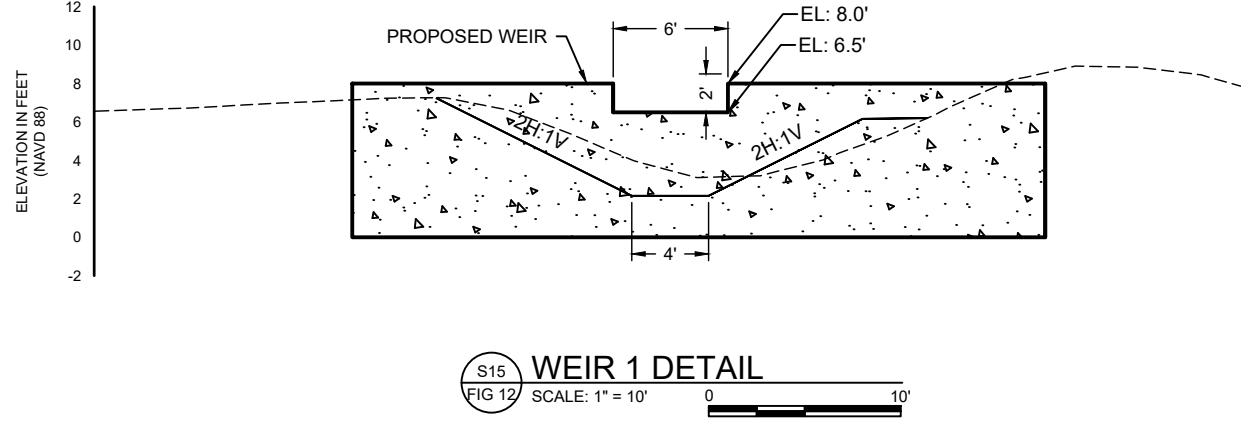
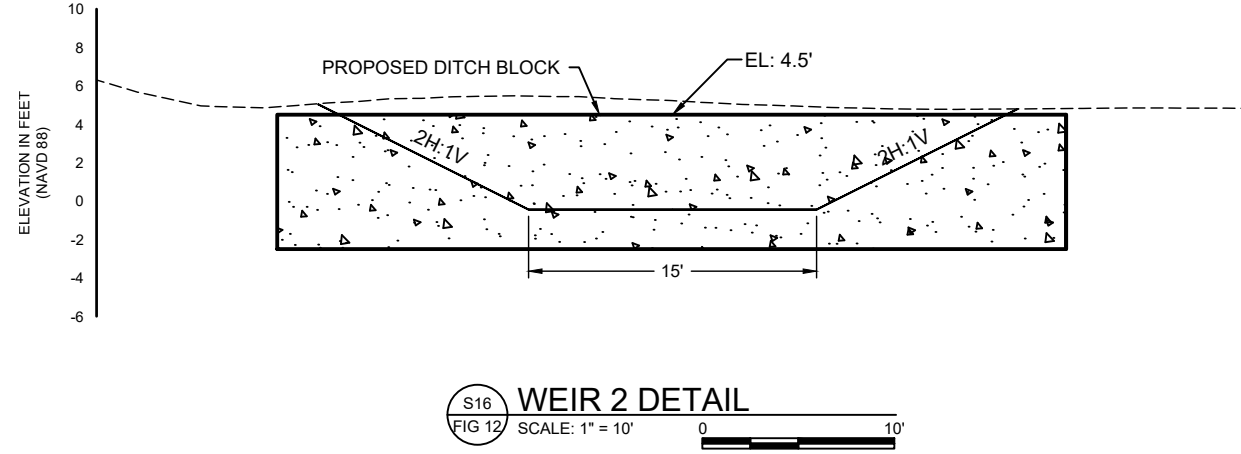
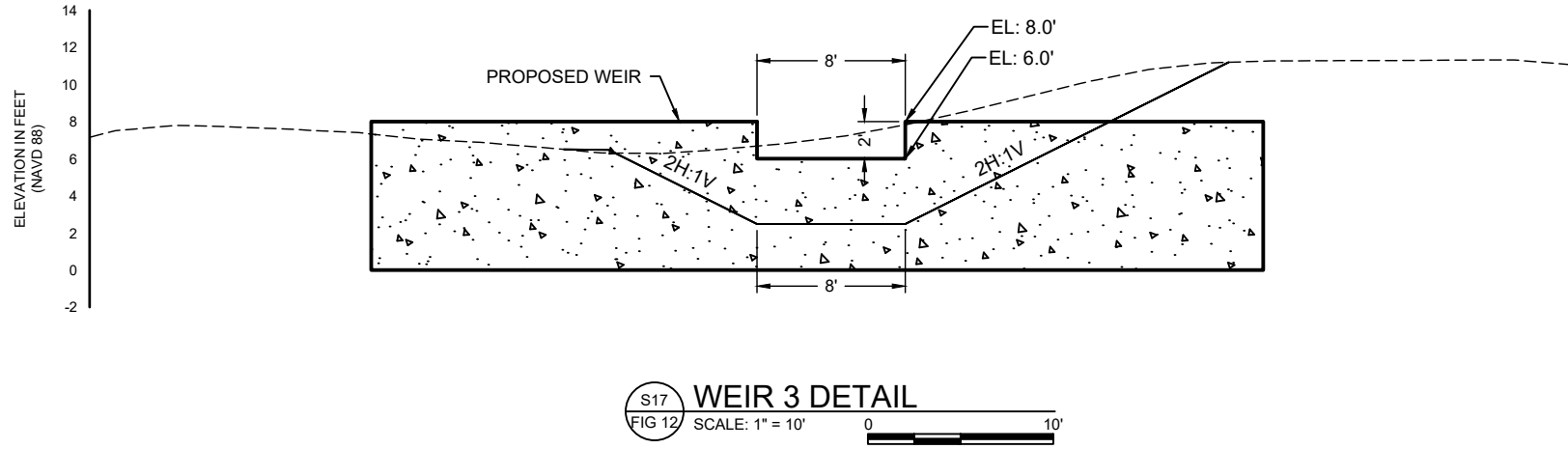


SECTION 14
 S14
 FIG 12 SCALE: 1" = 5' 0 5'

ANTON FLEWELLING X:\SYS\PROJECTS\C2018-052_COLLIERCO\FIGURES\C2018-052-F-SOUTHERNFLOWWAY SECTIONS.DWG 1/27/2020 10:39:21 PM

 <p>TAYLOR ENGINEERING INC. 10199 SOUTHSIDE BLVD SUITE 310 JACKSONVILLE, FLORIDA 32256 REGISTRY # 4815</p>	<p>FIGURE 14 NAPLES RESERVE FLOW-WAY #2 AND PEDESTRIAN PATH CROSS-SECTIONS COMPREHENSIVE WATERSHED IMPROVEMENT PLAN COLLIER COUNTY, FLORIDA</p>		<p>PROJECT: C2018-052 DRAWN BY: AF SHEET: 14 of 15 DATE: JAN 2020</p>	<p>SEAL: [Blank] ENG: [Blank]</p>
	<p>DRAFT</p>			<p>DATE</p>

PRELIMINARY DRAWINGS: THESE DRAWINGS ARE NOT IN FINAL FORM, BUT ARE BEING TRANSMITTED FOR AGENCY REVIEW.



TAYLOR ENGINEERING INC.
 10199 SOUTHSIDE BLVD
 SUITE 310
 JACKSONVILLE, FLORIDA 32256
 REGISTRY # 4815

FIGURE 15
 WEIR DETAILS
 COMPREHENSIVE WATERSHED IMPROVEMENT PLAN
 COLLIER COUNTY, FLORIDA

PROJECT C2018-052
 DRAWN BY AF
 SHEET 15 of 15
 DATE JAN 2020

DRAFT