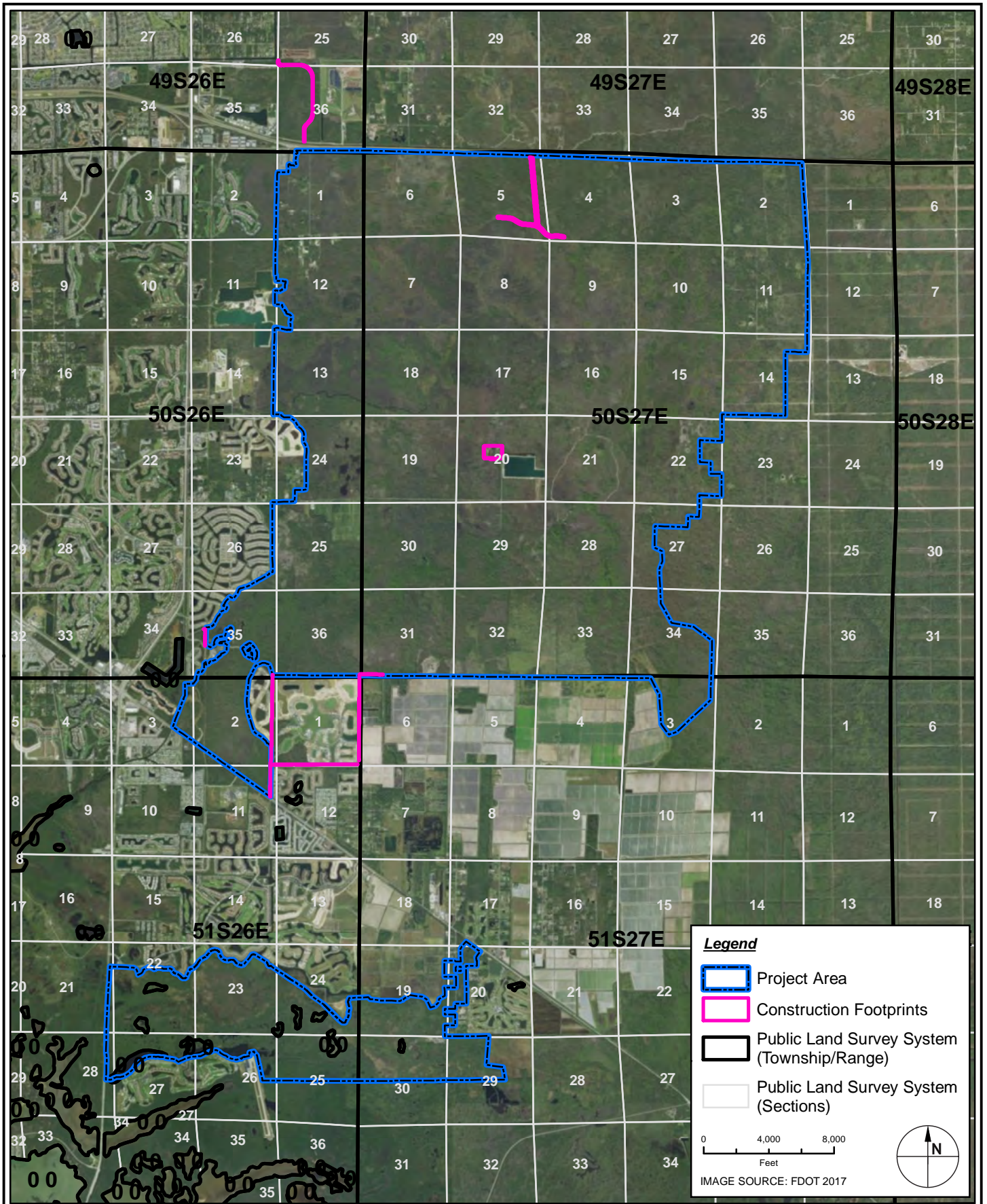


**DEPARTMENT OF THE ARMY PERMIT APPLICATION
APRIL 2020**

**COLLIER COUNTY
COMPREHENSIVE WATERSHED IMPROVEMENT PLAN
COLLIER COUNTY, FLORIDA**

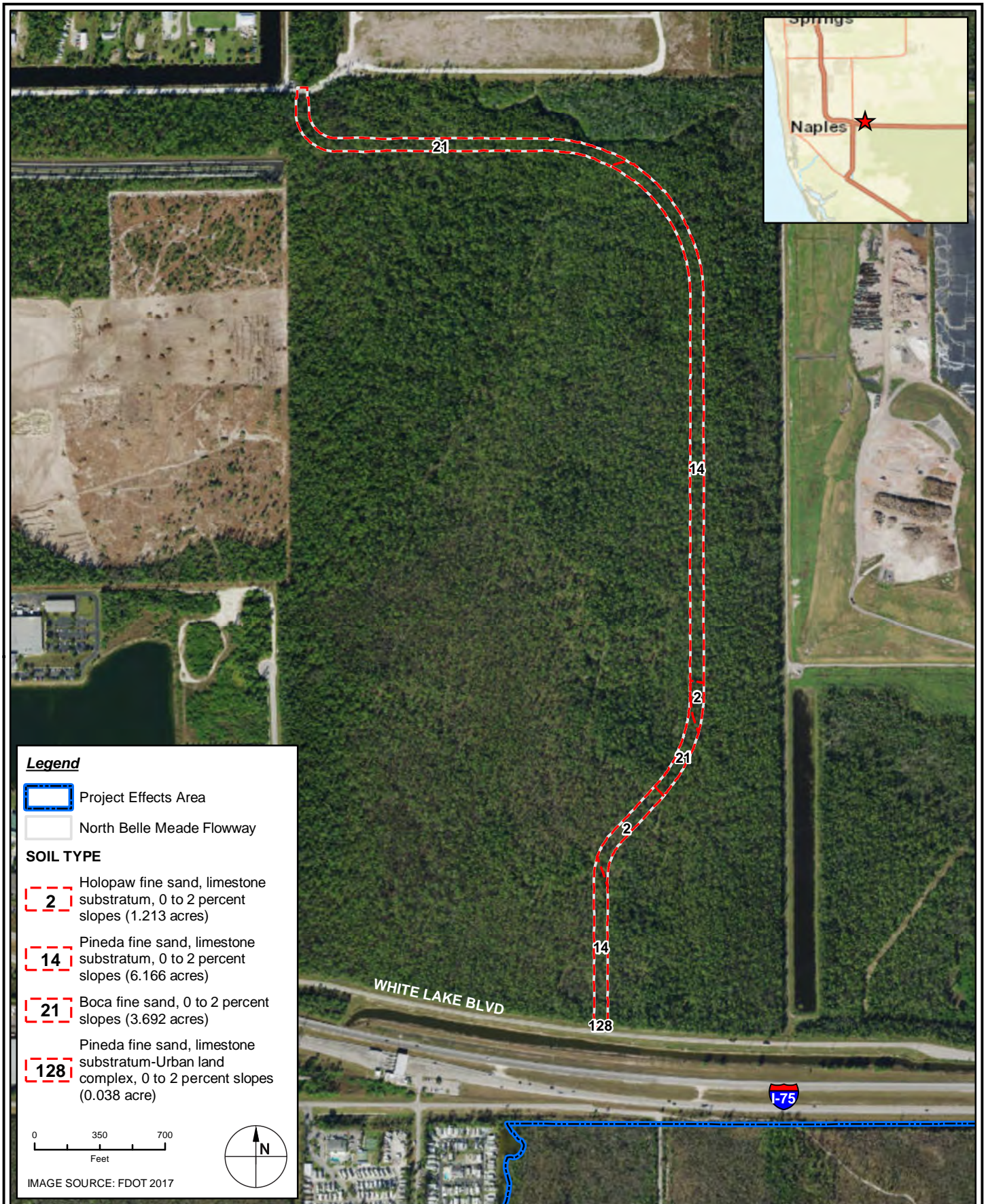
**SUPPLEMENTAL INFORMATION
ATTACHMENT 2
APPLICATION FIGURES**



TAYLOR ENGINEERING INC.
 10199 SOUTHSIDE BOULEVARD
 SUITE 310
 JACKSONVILLE, FL 32256
 CERTIFICATE OF AUTHORIZATION # 4815

FIGURE 1
LOCATION MAP
 COLLIER COUNTY CWIP
 COLLIER COUNTY, FLORIDA

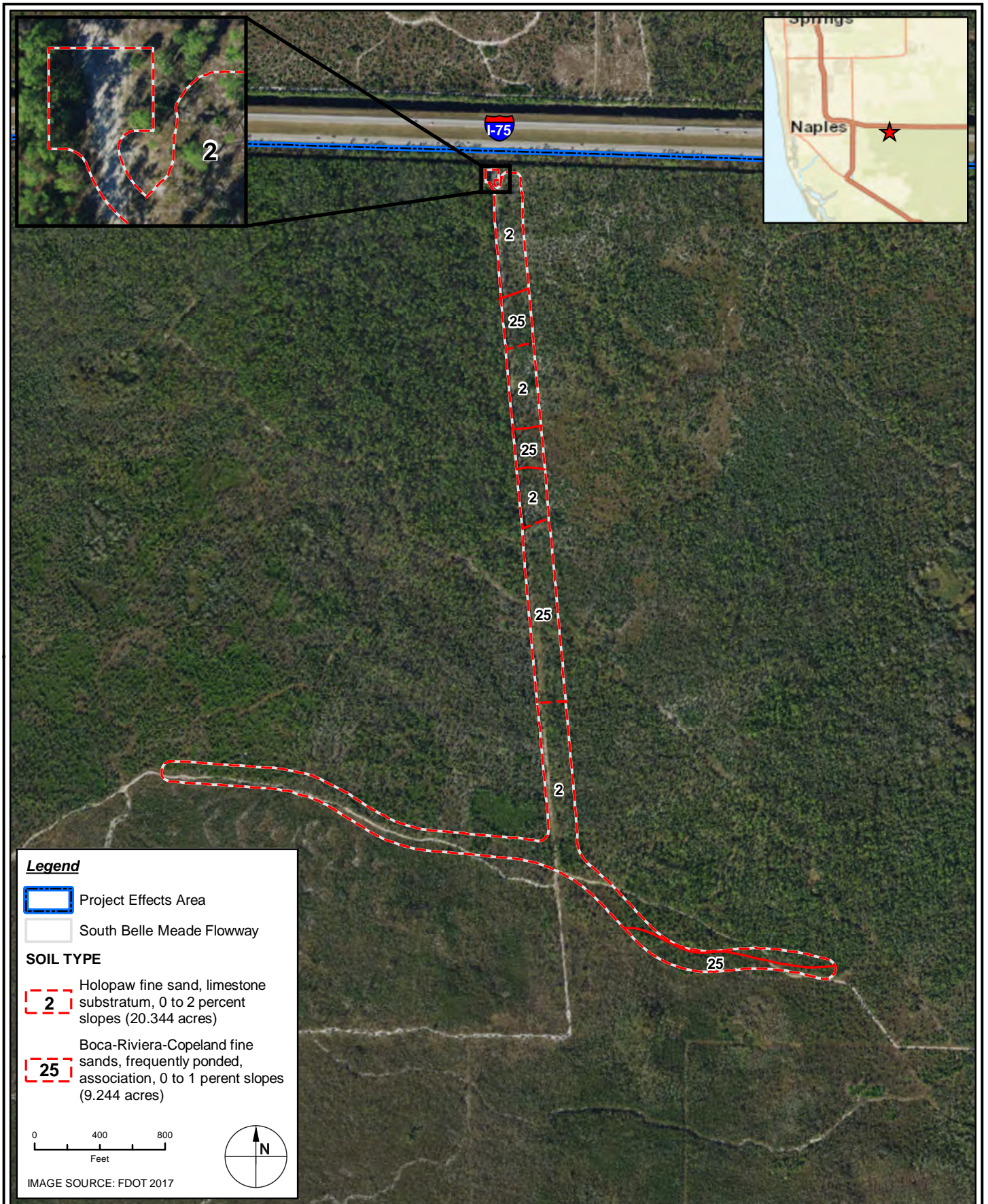
PROJECT	C2018-052
DRAWN BY	KM
SHEET	
DATE	JAN 2020



TAYLOR ENGINEERING INC.
 10199 SOUTHSIDE BOULEVARD
 SUITE 310
 JACKSONVILLE, FL 32256
 CERTIFICATE OF AUTHORIZATION # 4815

FIGURE 2
 NORTH BELLE MEADE FLOWWAY - NRCS SOILS MAP
 COLLIER COUNTY CWIP
 COLLIER COUNTY, FLORIDA

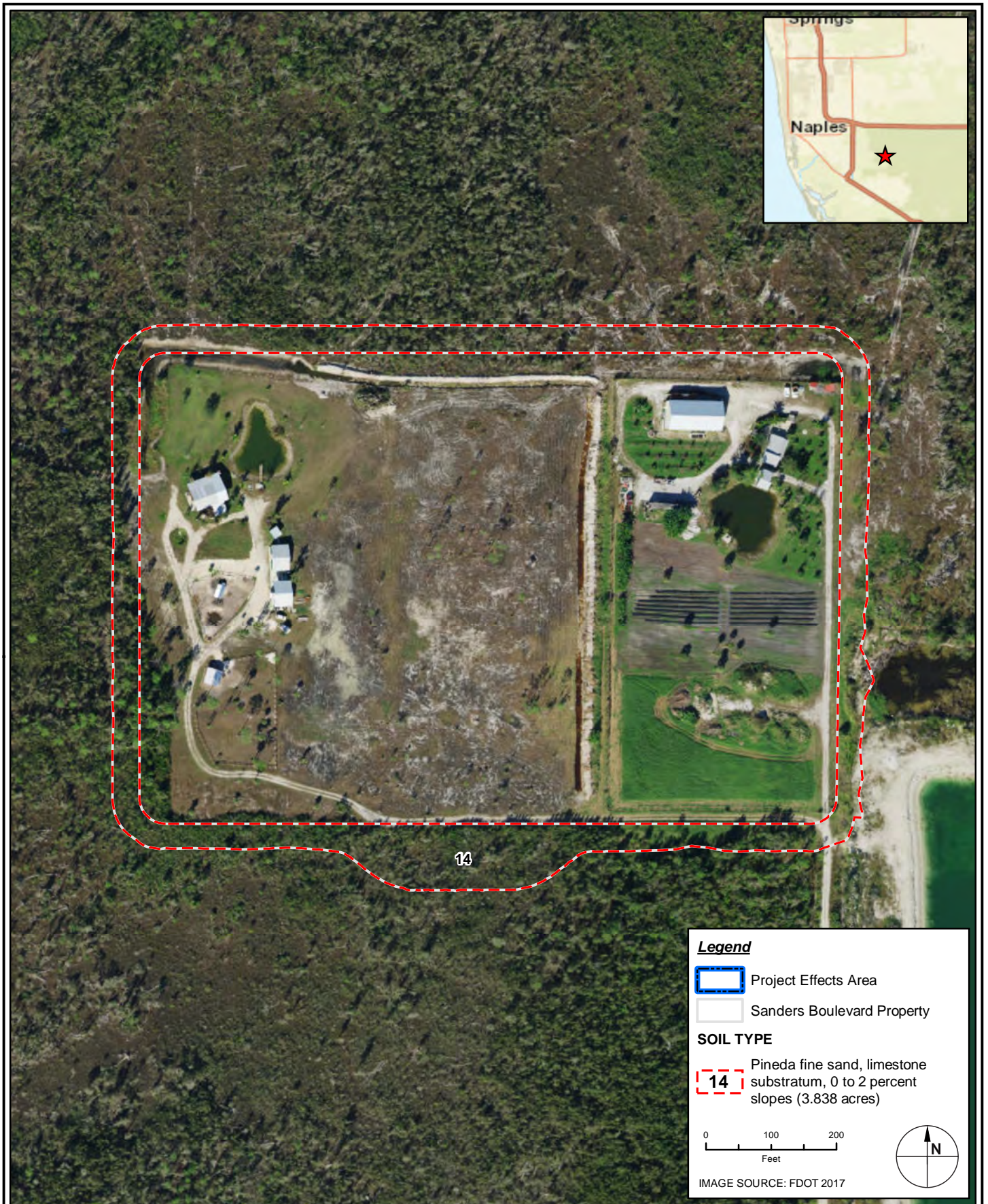
PROJECT	C2018-052
DRAWN BY	KM
SHEET	
DATE	APR 2020



TAYLOR ENGINEERING INC.
 10199 SOUTHSIDE BOULEVARD
 SUITE 310
 JACKSONVILLE, FL 32256
 CERTIFICATE OF AUTHORIZATION # 4815

FIGURE 3
 SOUTH BELLE MEADE FLOWWAY - NRCS SOILS MAP
 COLLIER COUNTY CWIP
 COLLIER COUNTY, FLORIDA

PROJECT	C2018-052
DRAWN BY	KM
SHEET	
DATE	APR 2020




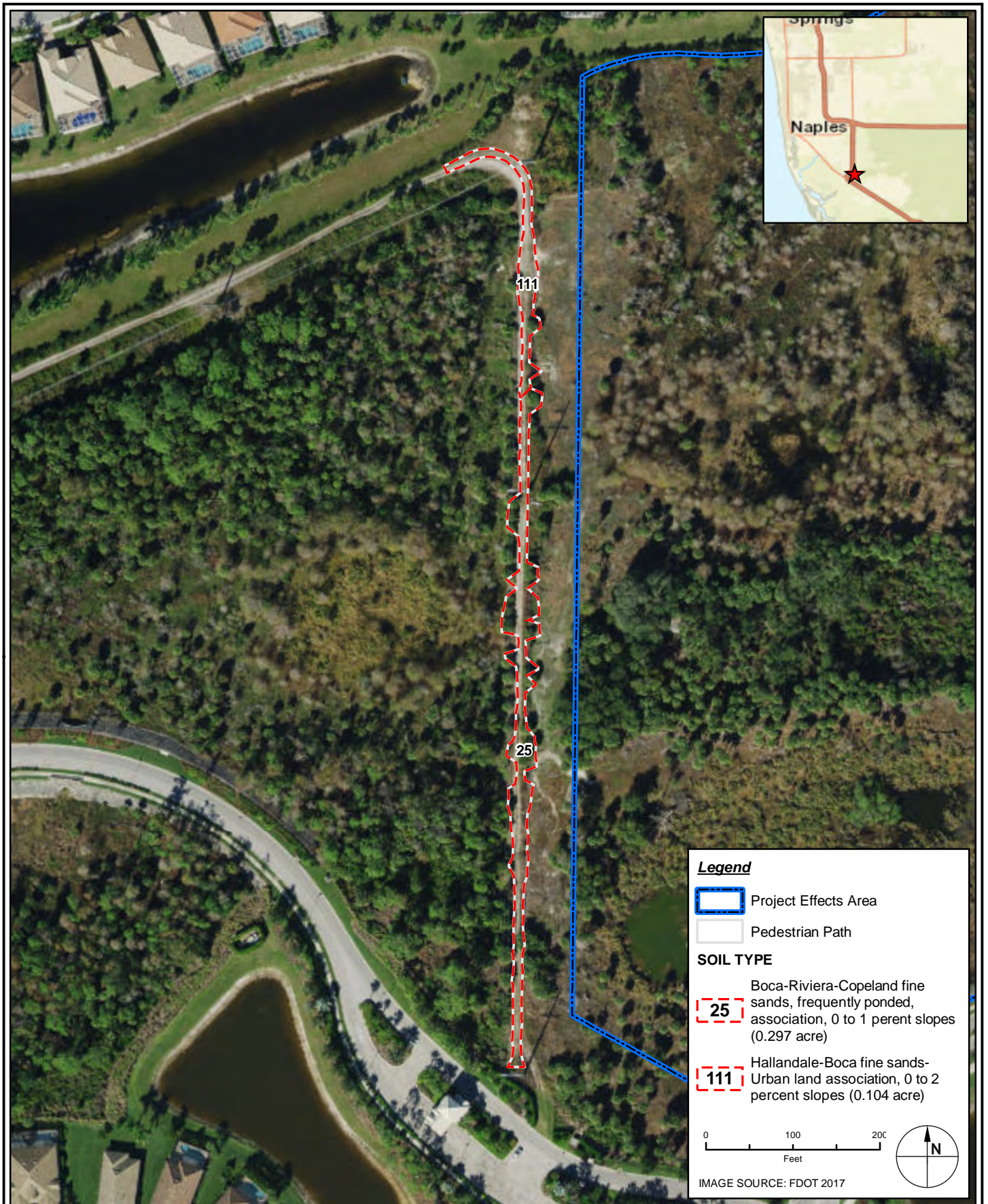

TAYLOR ENGINEERING INC.
 10199 SOUTHSIDE BOULEVARD
 SUITE 310
 JACKSONVILLE, FL 32256
 CERTIFICATE OF AUTHORIZATION # 4815

FIGURE 4
 SANDERS BOULEVARD PROPERTY - NRCS SOILS MAP
 COLLIER COUNTY CWIP
 COLLIER COUNTY, FLORIDA

PROJECT	C2018-052
DRAWN BY	KM
SHEET	
DATE	APR 2020




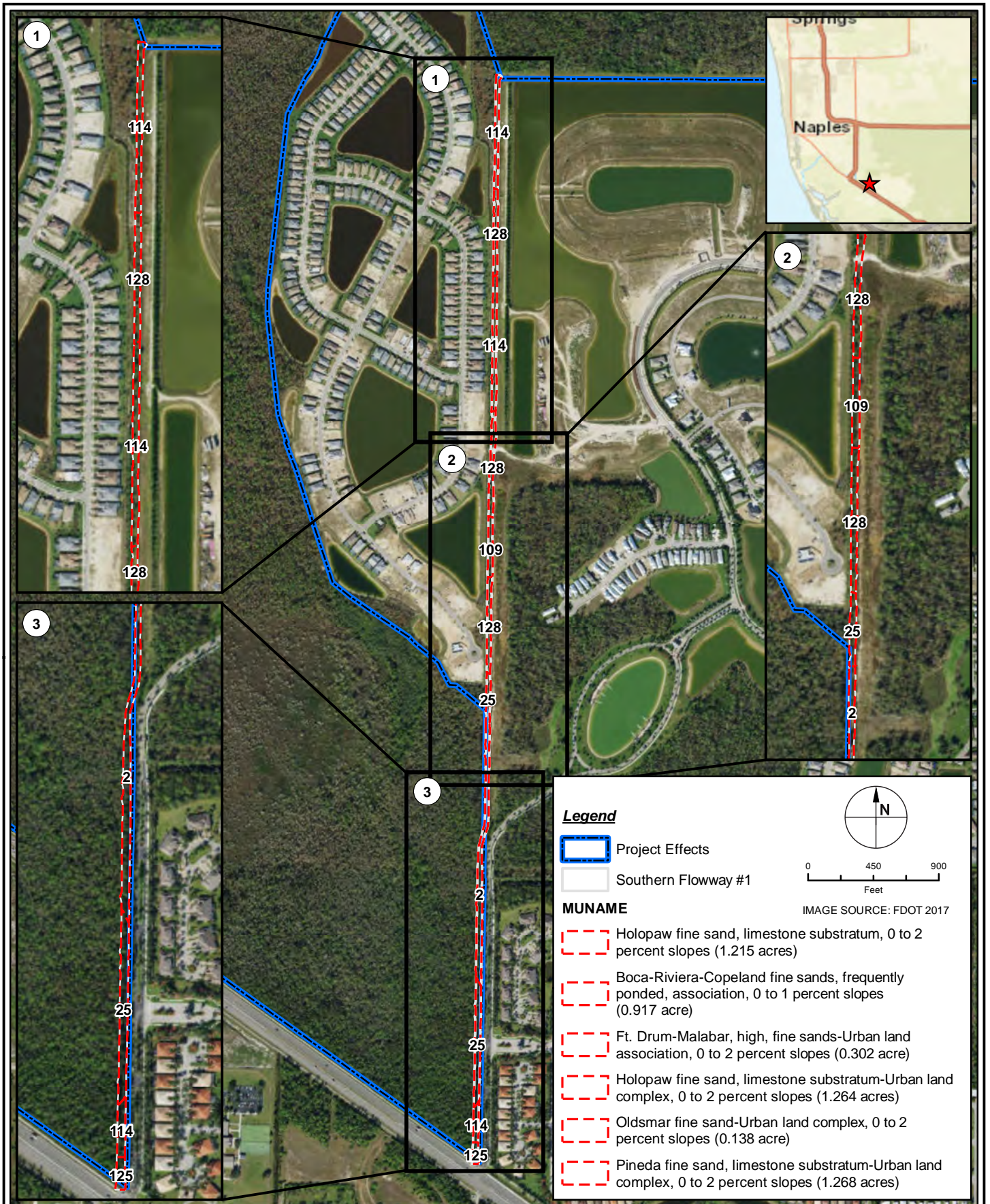

TAYLOR ENGINEERING INC.
 10199 SOUTHSIDE BOULEVARD
 SUITE 310
 JACKSONVILLE, FL 32256
 CERTIFICATE OF AUTHORIZATION # 4815

FIGURE 5
 PEDESTRIAN PATH - NRCS SOILS MAP
 COLLIER COUNTY CWIP
 COLLIER COUNTY, FLORIDA

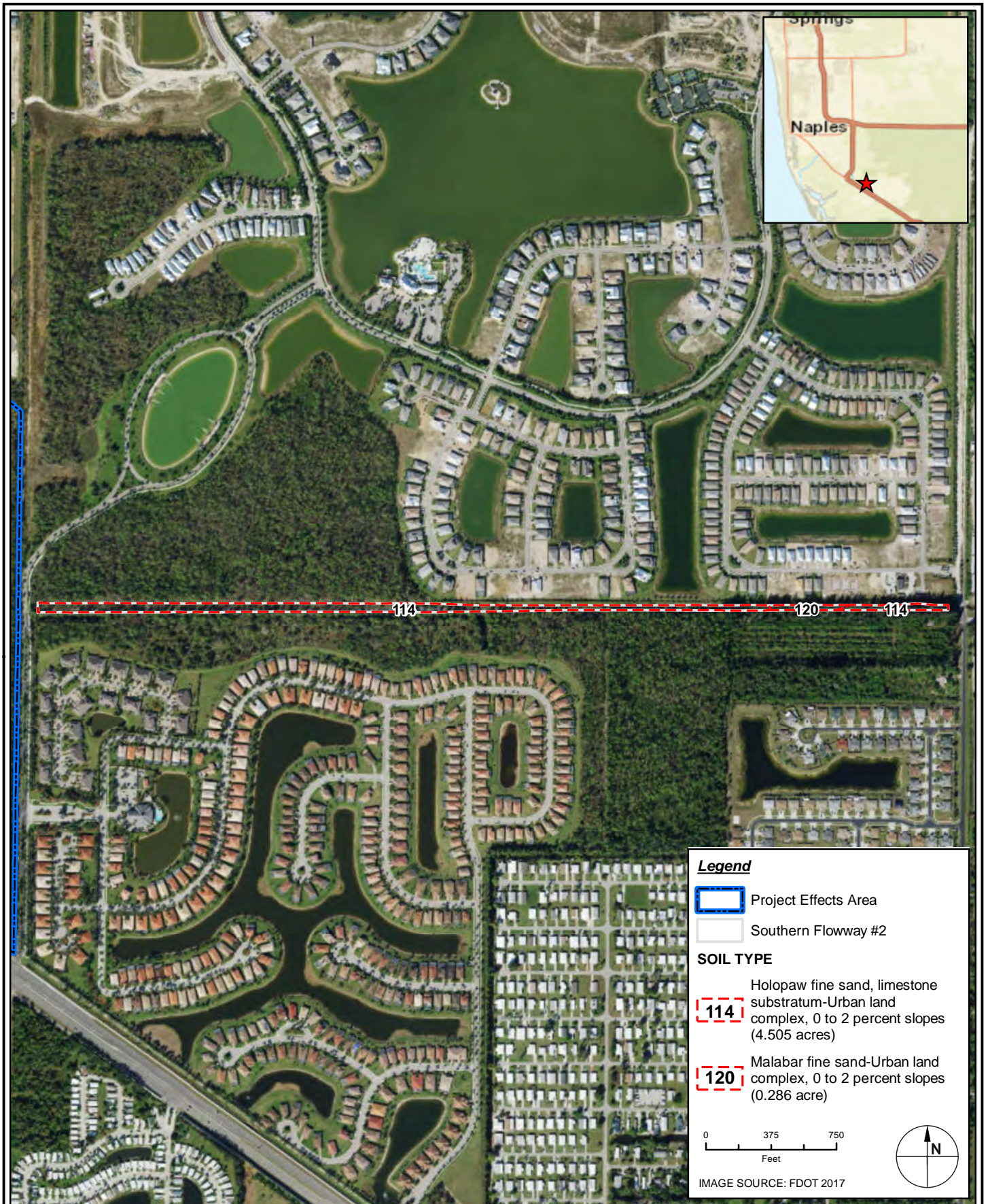
PROJECT	C2018-052
DRAWN BY	KM
SHEET	
DATE	APR 2020



TAYLOR ENGINEERING INC.
 10199 SOUTHSIDE BOULEVARD
 SUITE 310
 JACKSONVILLE, FL 32256
 CERTIFICATE OF AUTHORIZATION # 4815

FIGURE 6
 SOUTHERN FLOWWAY #1 - NRCS SOILS MAP
 COLLIER COUNTY CWIP
 COLLIER COUNTY, FLORIDA

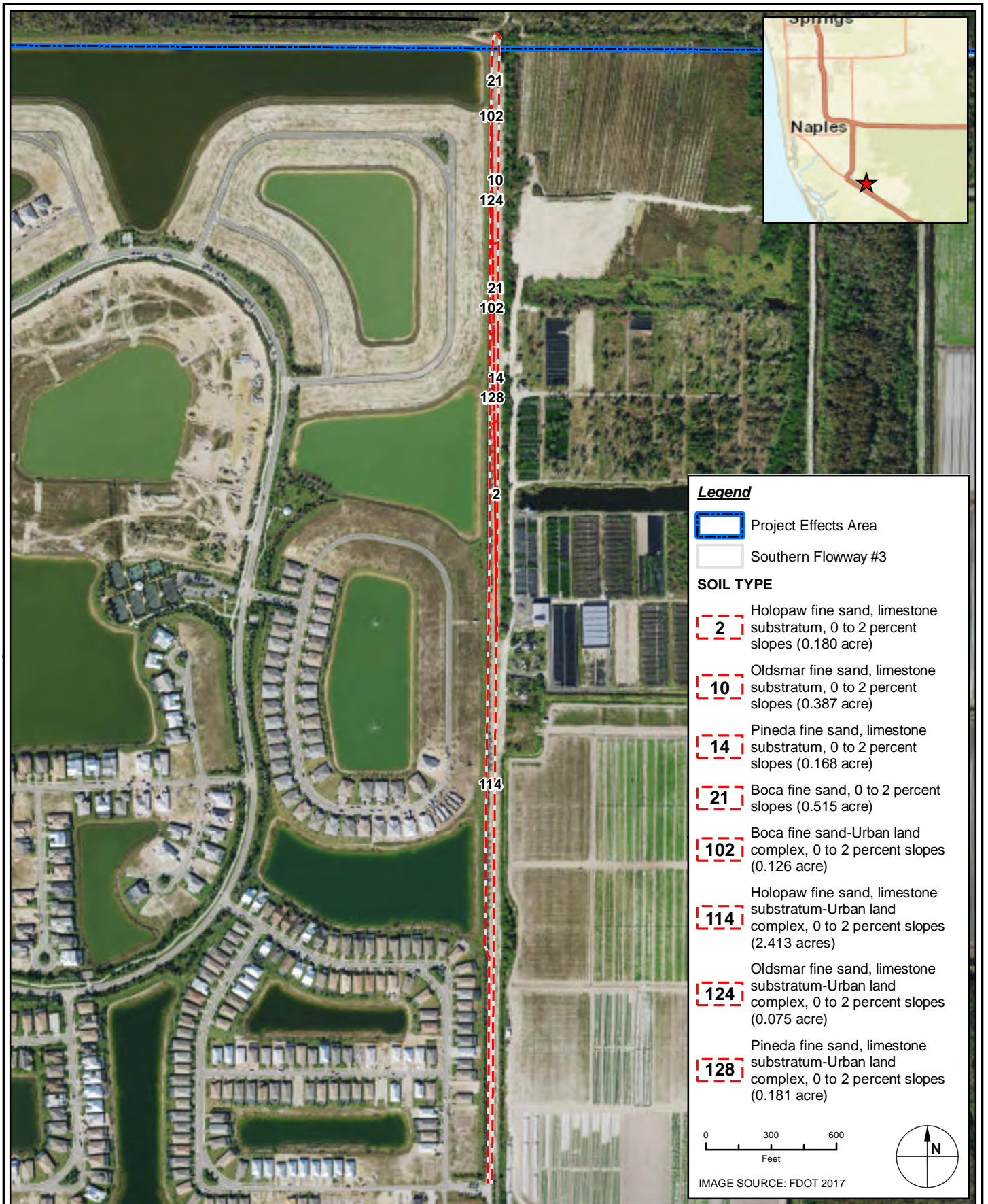
PROJECT	C2018-052
DRAWN BY	KM
SHEET	
DATE	APR 2020



TAYLOR ENGINEERING INC.
 10199 SOUTHSIDE BOULEVARD
 SUITE 310
 JACKSONVILLE, FL 32256
 CERTIFICATE OF AUTHORIZATION # 4815

FIGURE 7
 SOUTHERN FLOWWAY #2 - NRCS SOILS MAP
 COLLIER COUNTY CWIP
 COLLIER COUNTY, FLORIDA

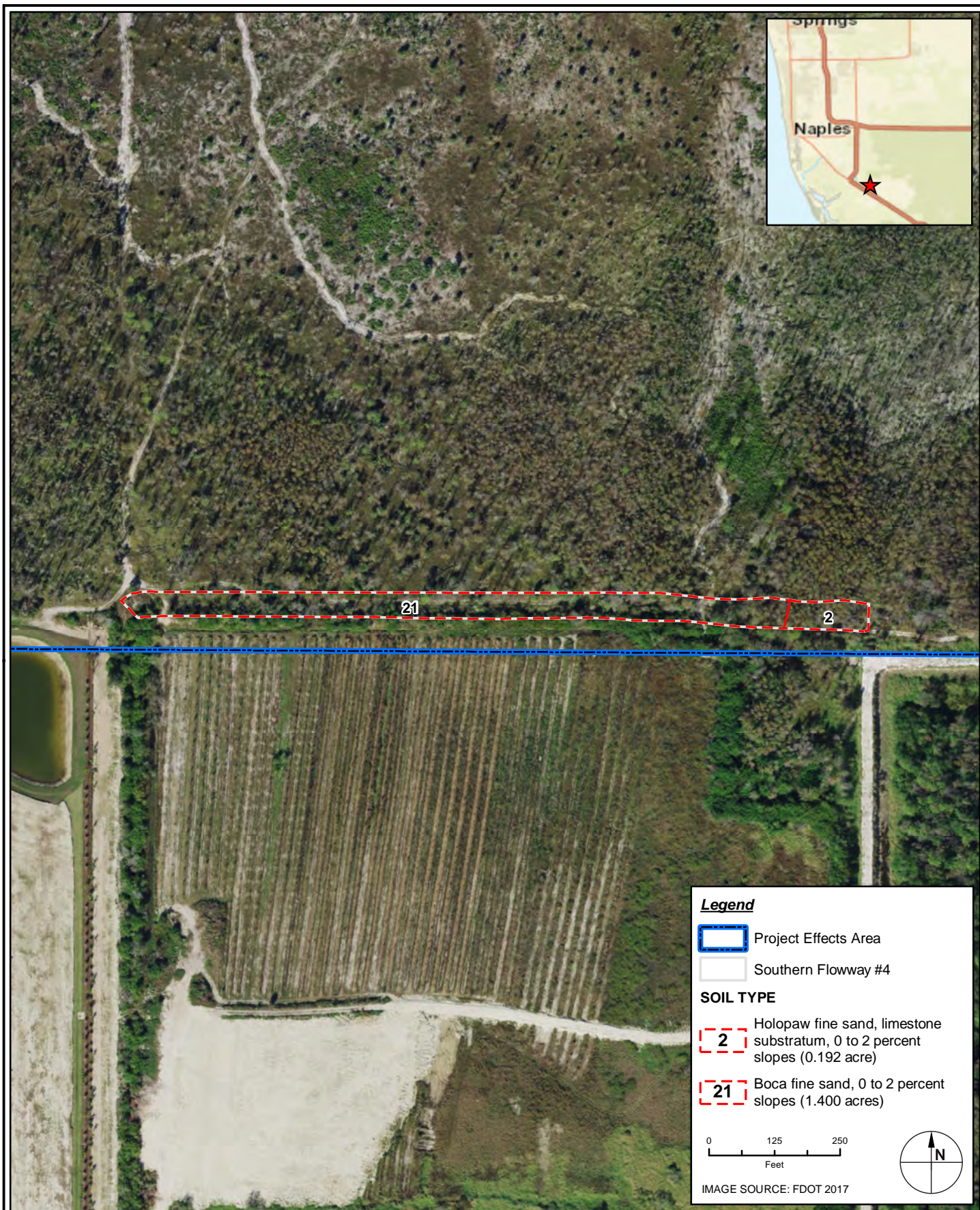
PROJECT	C2018-052
DRAWN BY	KM
SHEET	
DATE	APR 2020



TAYLOR ENGINEERING INC.
 10199 SOUTHSIDE BOULEVARD
 SUITE 310
 JACKSONVILLE, FL 32256
 CERTIFICATE OF AUTHORIZATION # 4815

FIGURE 8
 SOUTHERN FLOWWAY #3 - NRCS SOILS MAP
 COLLIER COUNTY CWIP
 COLLIER COUNTY, FLORIDA

PROJECT	C2018-052
DRAWN BY	KM
SHEET	
DATE	APR 2020




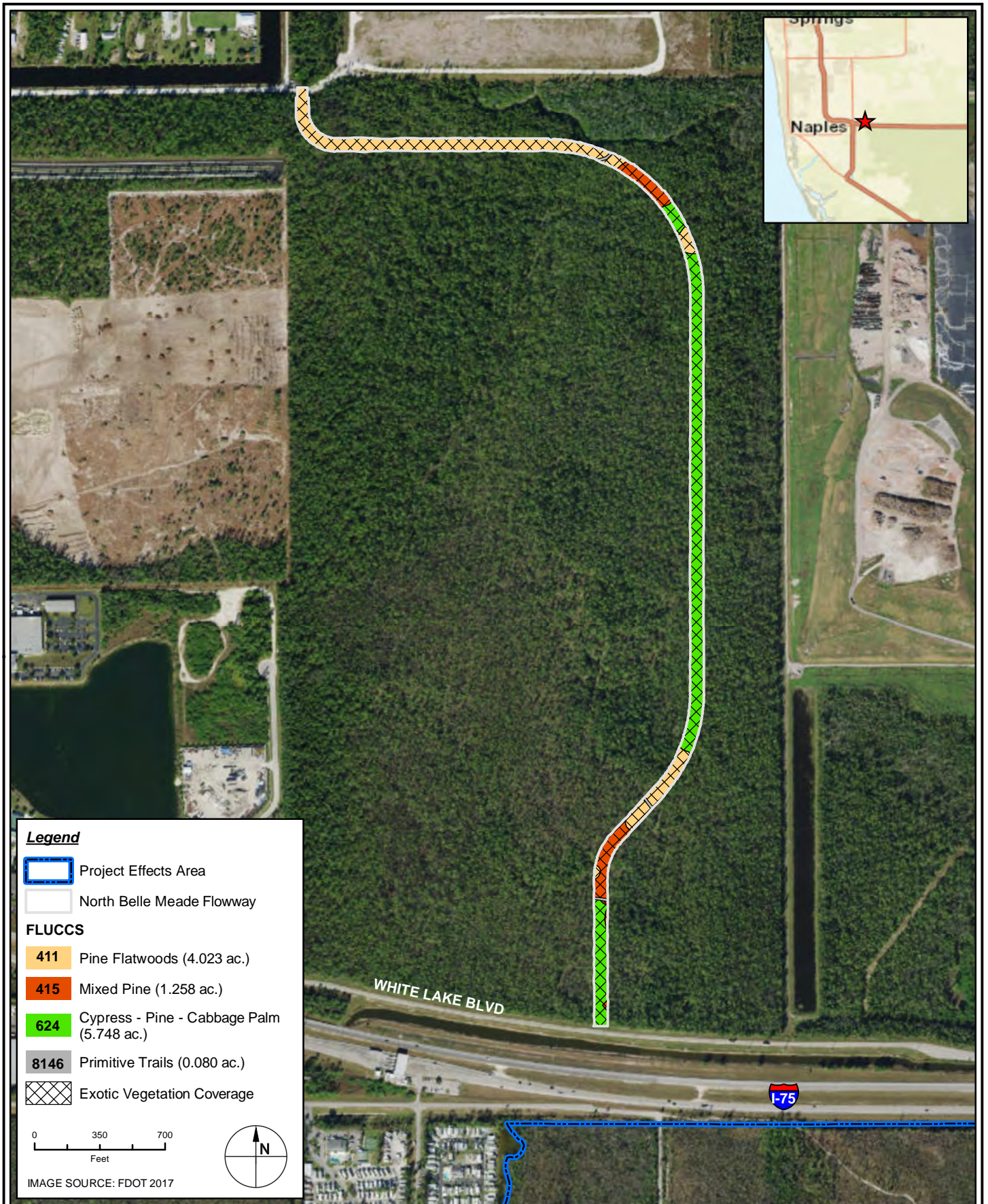

TAYLOR ENGINEERING INC.
 10199 SOUTHSIDE BOULEVARD
 SUITE 310
 JACKSONVILLE, FL 32256
 CERTIFICATE OF AUTHORIZATION # 4815

FIGURE 9
 SOUTHERN FLOWWAY #4 - NRCS SOILS MAP
 COLLIER COUNTY CWIP
 COLLIER COUNTY, FLORIDA

PROJECT	C2018-052
DRAWN BY	KM
SHEET	
DATE	APR 2020



Legend

- Project Effects Area
- North Belle Meade Flowway

FLUCCS

- 411 Pine Flatwoods (4.023 ac.)
- 415 Mixed Pine (1.258 ac.)
- 624 Cypress - Pine - Cabbage Palm (5.748 ac.)
- 8146 Primitive Trails (0.080 ac.)
- Exotic Vegetation Coverage

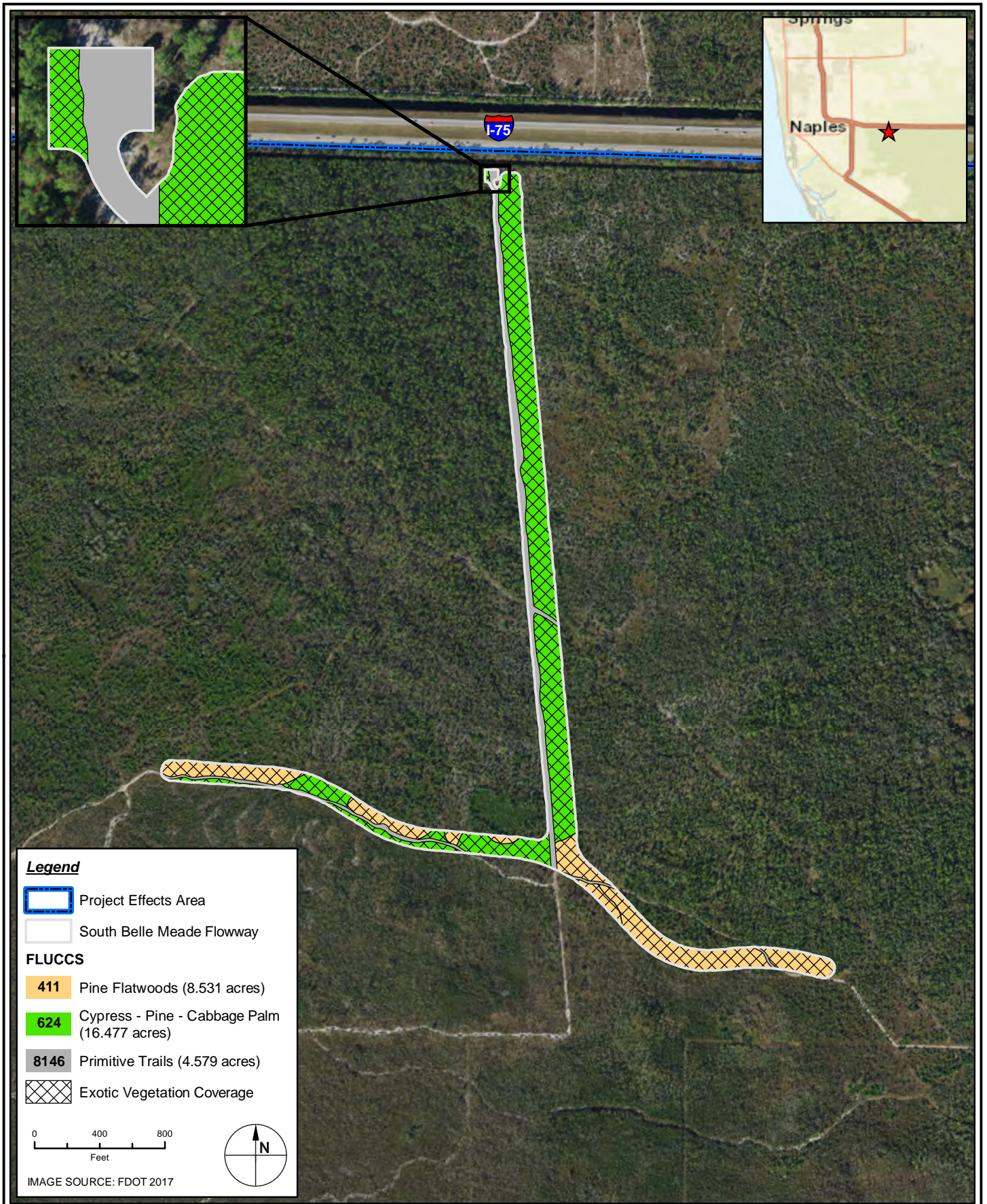
0 350 700
Feet

IMAGE SOURCE: FDOT 2017

TAYLOR ENGINEERING INC.
 10199 SOUTHSIDE BOULEVARD
 SUITE 310
 JACKSONVILLE, FL 32256
 CERTIFICATE OF AUTHORIZATION # 4815

FIGURE 10
 NORTH BELLE MEADE FLOWWAY
 EXISTING FLUCCS
 COLLIER COUNTY CWIP
 COLLIER COUNTY, FLORIDA

PROJECT	C2018-052
DRAWN BY	KM
SHEET	
DATE	APR 2020






 **TAYLOR ENGINEERING INC.**
 10199 SOUTHSIDE BOULEVARD
 SUITE 310
 JACKSONVILLE, FL 32256
 CERTIFICATE OF AUTHORIZATION # 4815







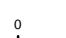
FIGURE 11
SOUTH BELLE MEADE FLOWWAY
EXISTING FLUCCS
COLLIER COUNTY CWIP
COLLIER COUNTY, FLORIDA

PROJECT	C2018-052
DRAWN BY	KM
SHEET	
DATE	APR 2020

Legend

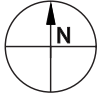
-  Project Effects Area
-  Sanders Boulevard Property

FLUCCS

-  **500** Water (0.043 ac.)
-  **619** Exotic Wetland Hardwoods (0.511 ac.)
-  **624** Cypress - Pine - Cabbage Palm (1.071 ac.)
-  **625** Hydric Pine Flatwoods (0.916 ac.)
-  **740** Disturbed Land (1.271 ac.)
-  **814** Roads and Highways (0.026 ac.)
-  Exotic Vegetation Coverage

0 100 200
Feet

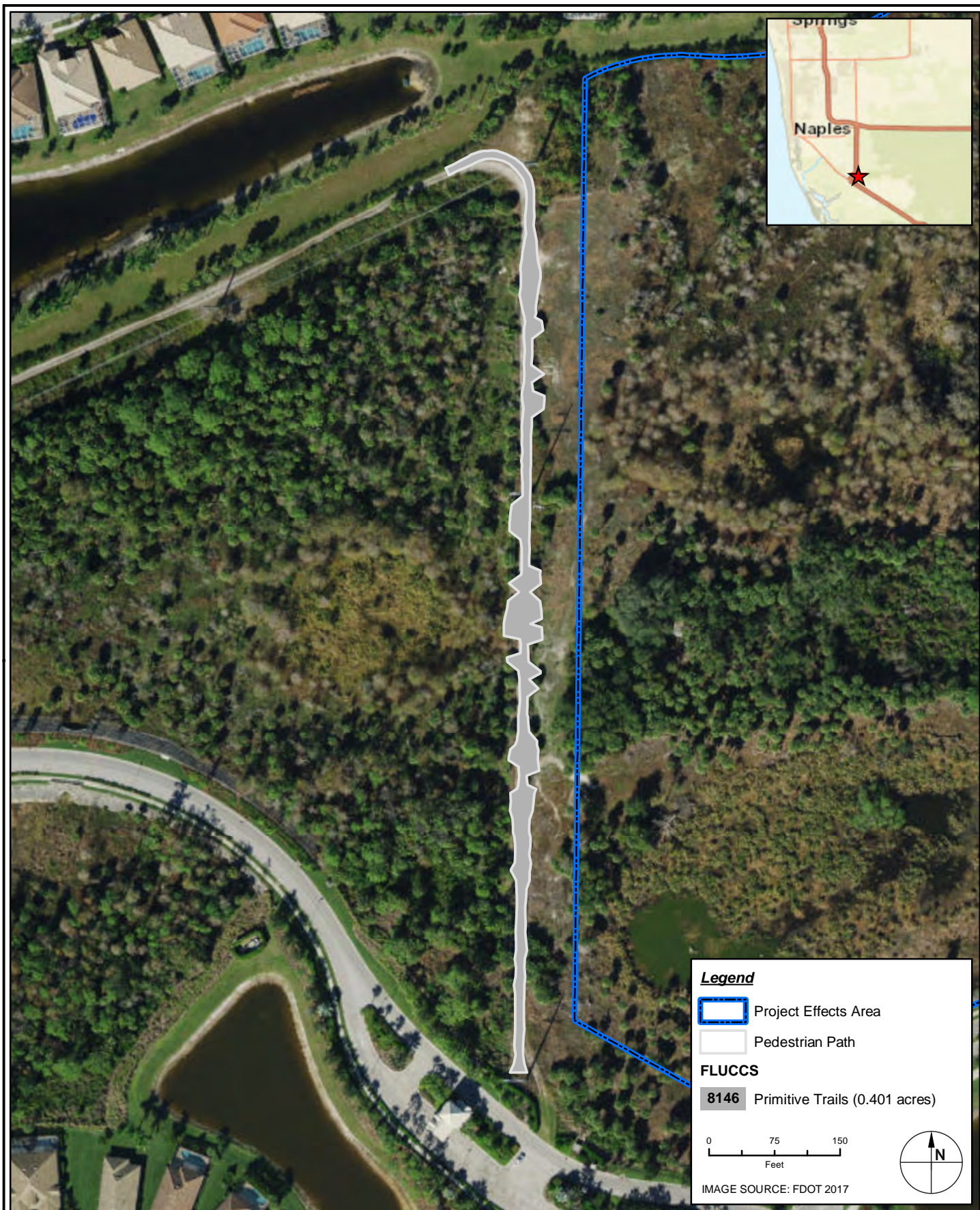
IMAGE SOURCE: FDOT 2017




TAYLOR ENGINEERING INC.
 10199 SOUTHSIDE BOULEVARD
 SUITE 310
 JACKSONVILLE, FL 32256
 CERTIFICATE OF AUTHORIZATION # 4815

FIGURE 12
SANDERS BOULEVARD PROPERTY
EXISTING FLUCCS
COLLIER COUNTY CWIP
COLLIER COUNTY, FLORIDA

PROJECT	C2018-052
DRAWN BY	KM
SHEET	
DATE	APR 2020




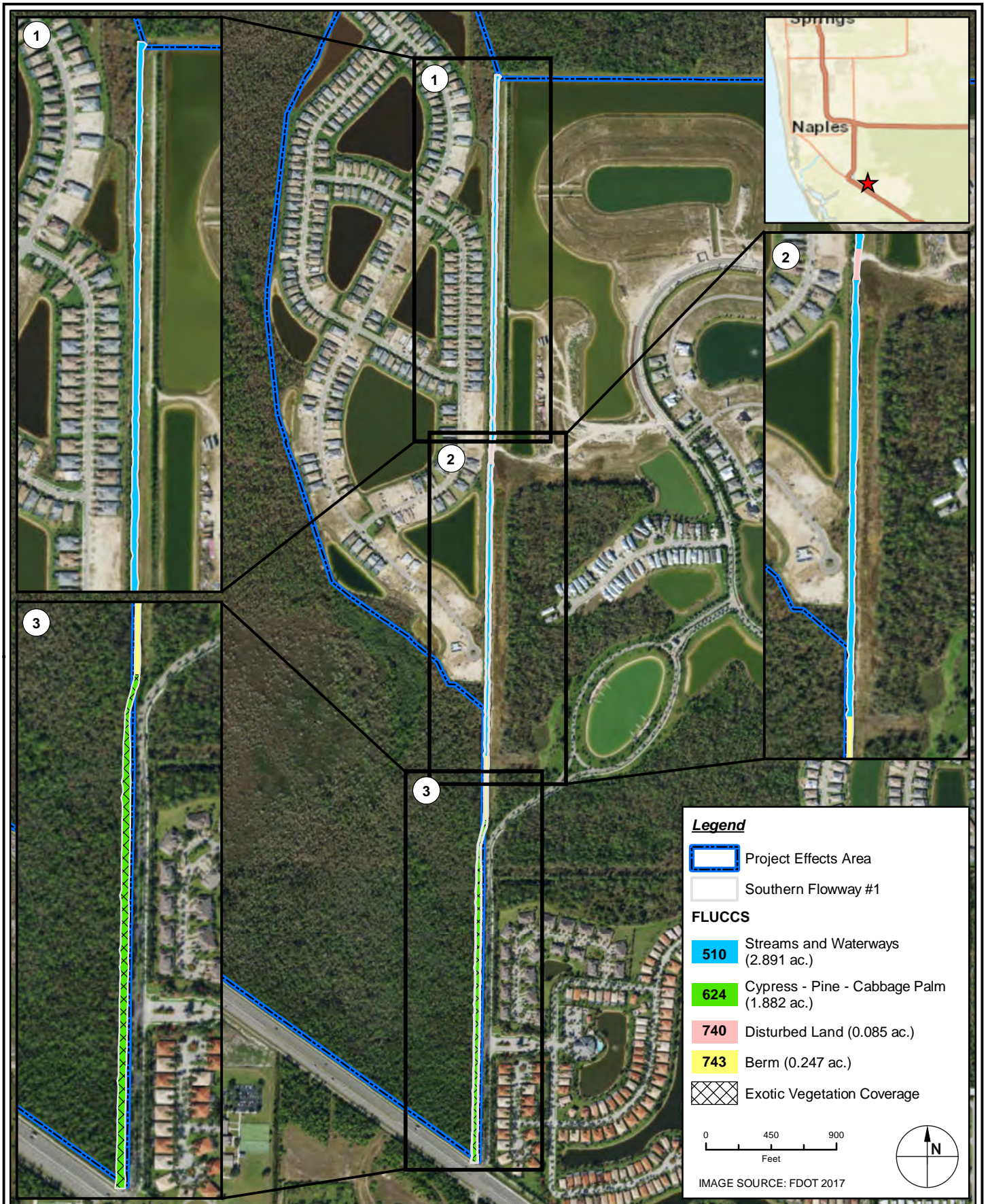

TAYLOR ENGINEERING INC.
 10199 SOUTHSIDE BOULEVARD
 SUITE 310
 JACKSONVILLE, FL 32256
 CERTIFICATE OF AUTHORIZATION # 4815

FIGURE 13
 PEDESTRIAN PATH
 EXISTING FLUCCS
 COLLIER COUNTY CWIP
 COLLIER COUNTY, FLORIDA

PROJECT	C2018-052
DRAWN BY	KM
SHEET	
DATE	APR 2020




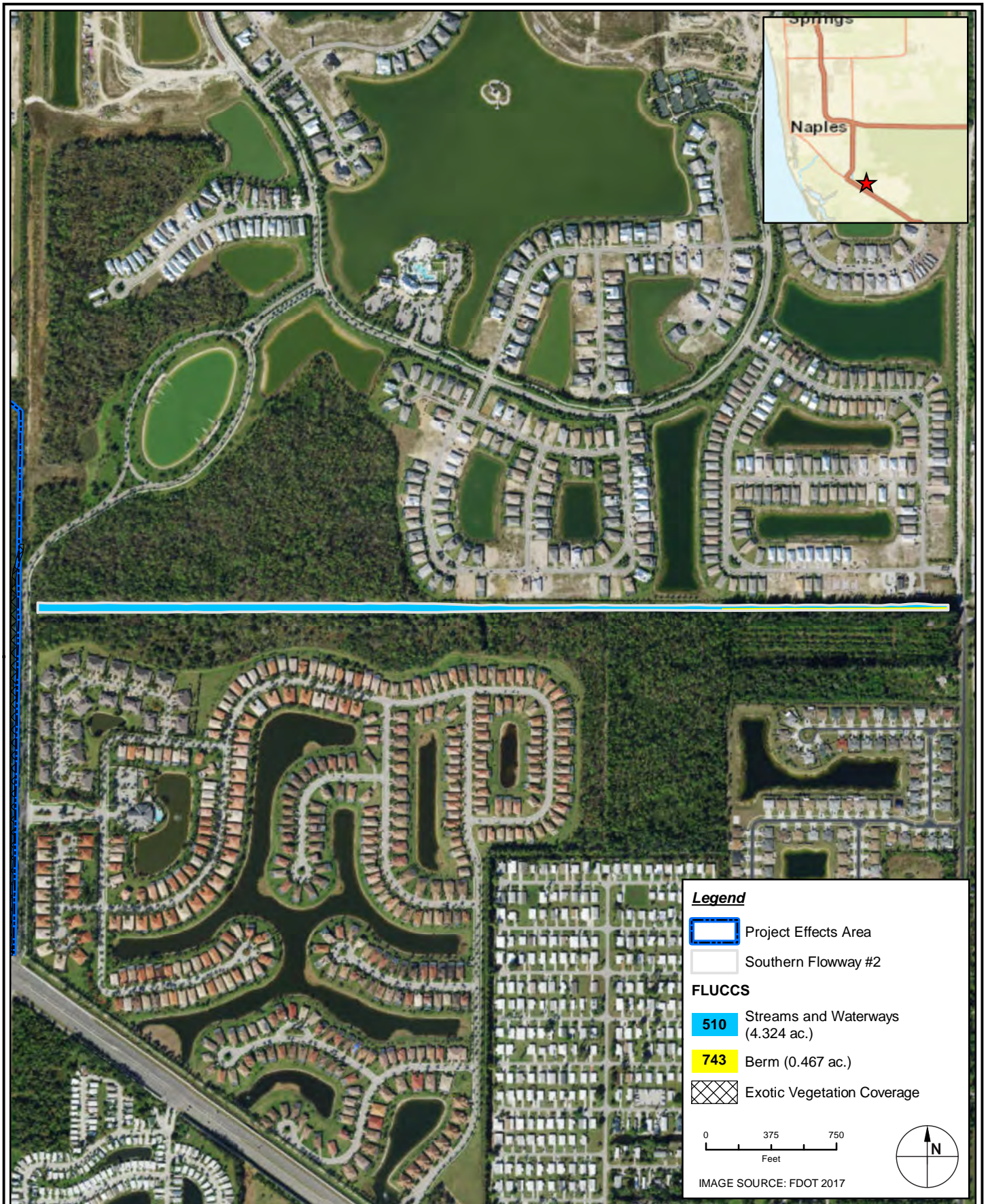

TAYLOR ENGINEERING INC.
 10199 SOUTHSIDE BOULEVARD
 SUITE 310
 JACKSONVILLE, FL 32256
 CERTIFICATE OF AUTHORIZATION # 4815

FIGURE 14
SOUTHERN FLOWWAY #1
EXISTING FLUCCS
COLLIER COUNTY CWIP
COLLIER COUNTY, FLORIDA

PROJECT	C2018-052
DRAWN BY	KM
SHEET	
DATE	APR 2020





TAYLOR ENGINEERING INC.
 10199 SOUTHSIDE BOULEVARD
 SUITE 310
 JACKSONVILLE, FL 32256
 CERTIFICATE OF AUTHORIZATION # 4815

FIGURE 15
 SOUTHERN FLOWWAY #2
 EXISTING FLUCCS
 COLLIER COUNTY CWIP
 COLLIER COUNTY, FLORIDA

PROJECT	C2018-052
DRAWN BY	KM
SHEET	
DATE	APR 2020




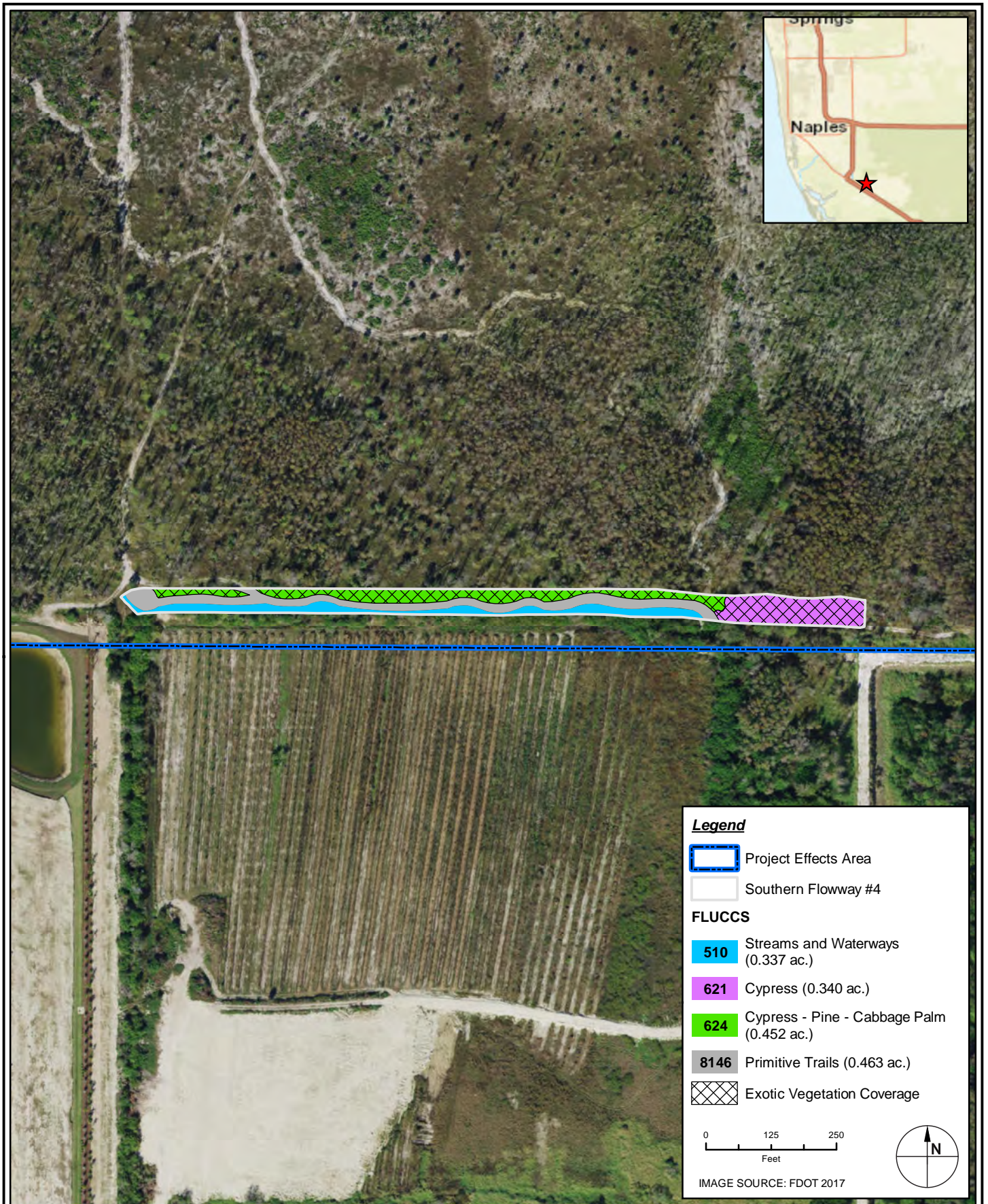

TAYLOR ENGINEERING INC.
 10199 SOUTHSIDE BOULEVARD
 SUITE 310
 JACKSONVILLE, FL 32256
 CERTIFICATE OF AUTHORIZATION # 4815

FIGURE 16
 SOUTHERN FLOWWAY #3
 EXISTING FLUCCS
 COLLIER COUNTY CWIP
 COLLIER COUNTY, FLORIDA

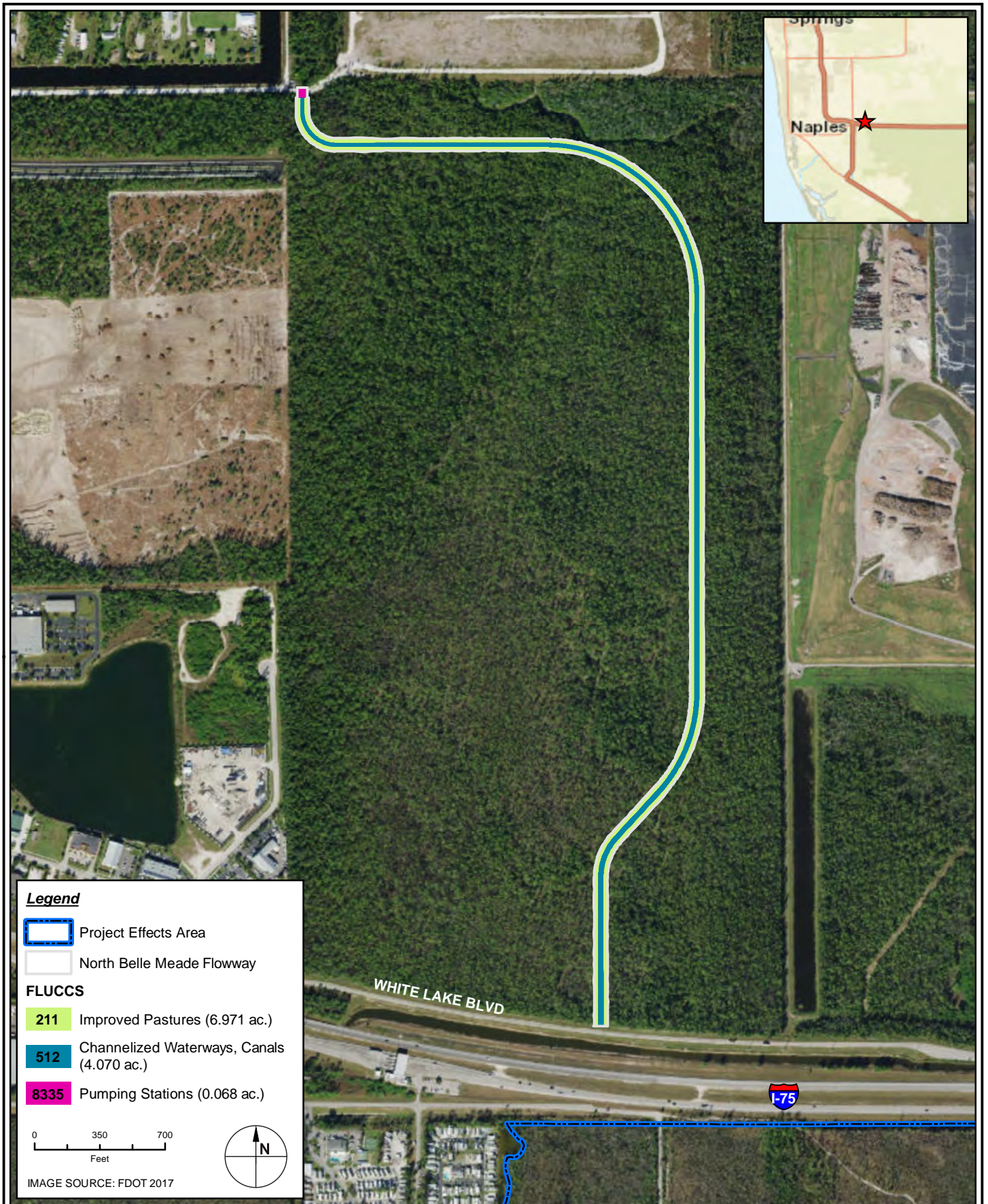
PROJECT	C2018-052
DRAWN BY	KM
SHEET	
DATE	APR 2020



TAYLOR ENGINEERING INC.
 10199 SOUTHSIDE BOULEVARD
 SUITE 310
 JACKSONVILLE, FL 32256
 CERTIFICATE OF AUTHORIZATION # 4815

FIGURE 17
SOUTHERN FLOWWAY #4
EXISTING FLUCCS
COLLIER COUNTY CWIP
COLLIER COUNTY, FLORIDA

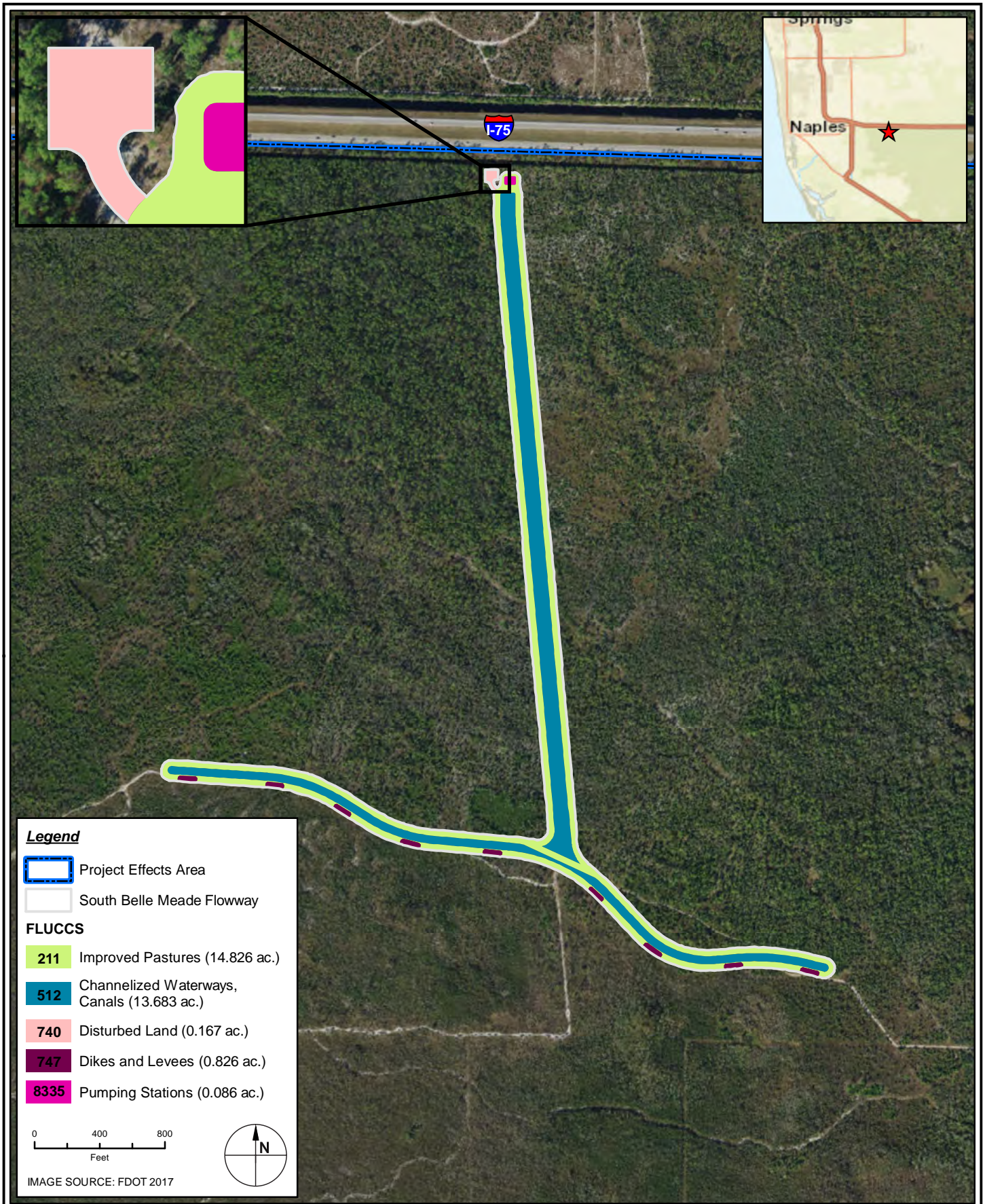
PROJECT	C2018-052
DRAWN BY	KM
SHEET	
DATE	APR 2020



TAYLOR ENGINEERING INC.
 10199 SOUTHSIDE BOULEVARD
 SUITE 310
 JACKSONVILLE, FL 32256
 CERTIFICATE OF AUTHORIZATION # 4815

FIGURE 18
NORTH BELLE MEADE FLOWWAY
PROPOSED FLUCCS
COLLIER COUNTY CWIP
COLLIER COUNTY, FLORIDA

PROJECT	C2018-052
DRAWN BY	KM
SHEET	
DATE	APR 2020



Legend

Project Effects Area

South Belle Meade Flowway

FLUCCS

211 Improved Pastures (14.826 ac.)

512 Channelized Waterways, Canals (13.683 ac.)

740 Disturbed Land (0.167 ac.)

747 Dikes and Levees (0.826 ac.)

8335 Pumping Stations (0.086 ac.)

0 400 800
Feet


IMAGE SOURCE: FDOT 2017

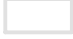
TAYLOR ENGINEERING INC.
 10199 SOUTHSIDE BOULEVARD
 SUITE 310
 JACKSONVILLE, FL 32256
 CERTIFICATE OF AUTHORIZATION # 4815

FIGURE 19
SOUTH BELLE MEADE FLOWWAY
PROPOSED FLUCCS
COLLIER COUNTY CWIP
COLLIER COUNTY, FLORIDA


PROJECT	C2018-052
DRAWN BY	KM
SHEET	
DATE	APR 2020


Legend


 Project Effects Area

 Sanders Boulevard Property

FLUCCS


 211 Improved Pastures (2.080 ac.)

 512 Channelized Waterways, Canals (1.654 ac.)

 8335 Pumping Stations (0.104 ac.)

0 100 200
Feet

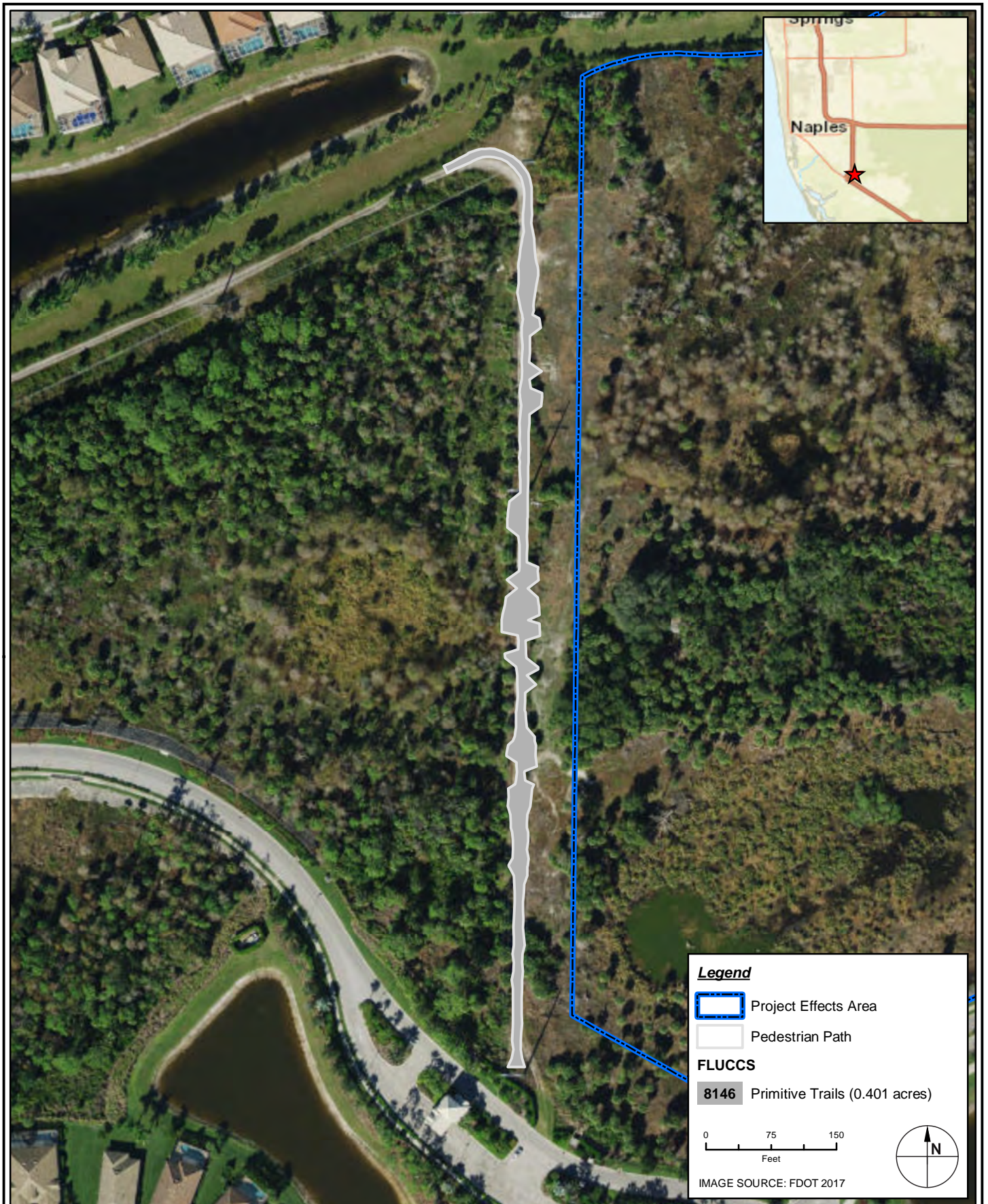
IMAGE SOURCE: FDOT 2017




TAYLOR ENGINEERING INC.
 10199 SOUTHSIDE BOULEVARD
 SUITE 310
 JACKSONVILLE, FL 32256
 CERTIFICATE OF AUTHORIZATION # 4815

FIGURE 20
SANDERS BOULEVARD PROPERTY
PROPOSED FLUCCS
COLLIER COUNTY CWIP
COLLIER COUNTY, FLORIDA

PROJECT	C2018-052
DRAWN BY	KM
SHEET	
DATE	APR 2020




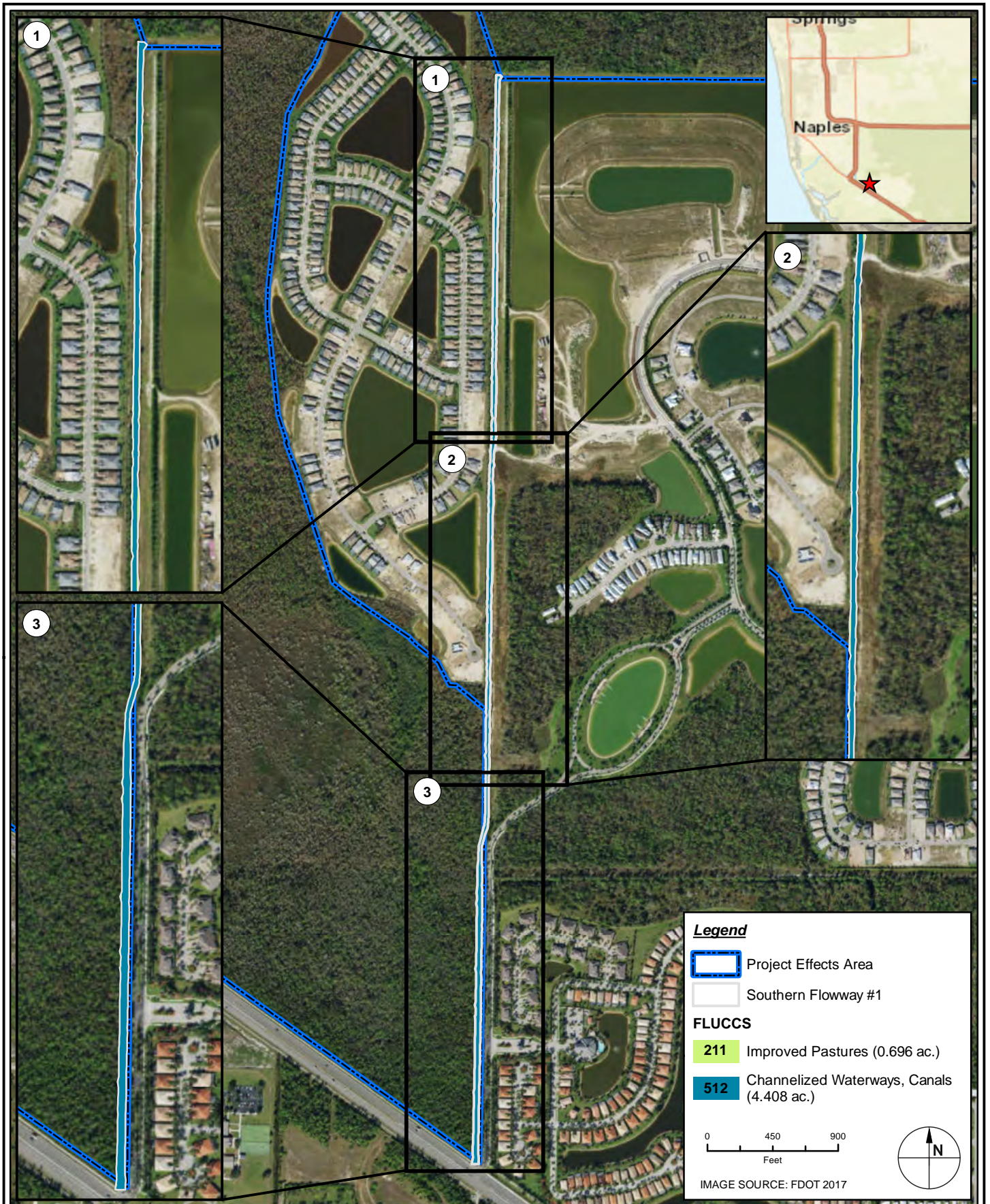

TAYLOR ENGINEERING INC.
 10199 SOUTHSIDE BOULEVARD
 SUITE 310
 JACKSONVILLE, FL 32256
 CERTIFICATE OF AUTHORIZATION # 4815

FIGURE 21
 PEDESTRIAN PATH
 PROPOSED FLUCCS
 COLLIER COUNTY CWIP
 COLLIER COUNTY, FLORIDA

PROJECT	C2018-052
DRAWN BY	KM
SHEET	
DATE	APR 2020





TAYLOR ENGINEERING INC.
 10199 SOUTHSIDE BOULEVARD
 SUITE 310
 JACKSONVILLE, FL 32256
 CERTIFICATE OF AUTHORIZATION # 4815

FIGURE 22
 SOUTHERN FLOWWAY #1
 PROPOSED FLUCCS
 COLLIER COUNTY CWIP
 COLLIER COUNTY, FLORIDA

PROJECT	C2018-052
DRAWN BY	KM
SHEET	
DATE	APR 2020



TAYLOR ENGINEERING INC.
 10199 SOUTHSIDE BOULEVARD
 SUITE 310
 JACKSONVILLE, FL 32256
 CERTIFICATE OF AUTHORIZATION # 4815

FIGURE 23
SOUTHERN FLOWWAY #2
PROPOSED FLUCCS
COLLIER COUNTY CWIP
COLLIER COUNTY, FLORIDA

PROJECT	C2018-052
DRAWN BY	KM
SHEET	
DATE	APR 2020





TAYLOR ENGINEERING INC.
 10199 SOUTHSIDE BOULEVARD
 SUITE 310
 JACKSONVILLE, FL 32256
 CERTIFICATE OF AUTHORIZATION # 4815

FIGURE 24
 SOUTHERN FLOWWAY #3
 PROPOSED FLUCCS
 COLLIER COUNTY CWIP
 COLLIER COUNTY, FLORIDA

PROJECT	C2018-052
DRAWN BY	KM
SHEET	
DATE	APR 2020




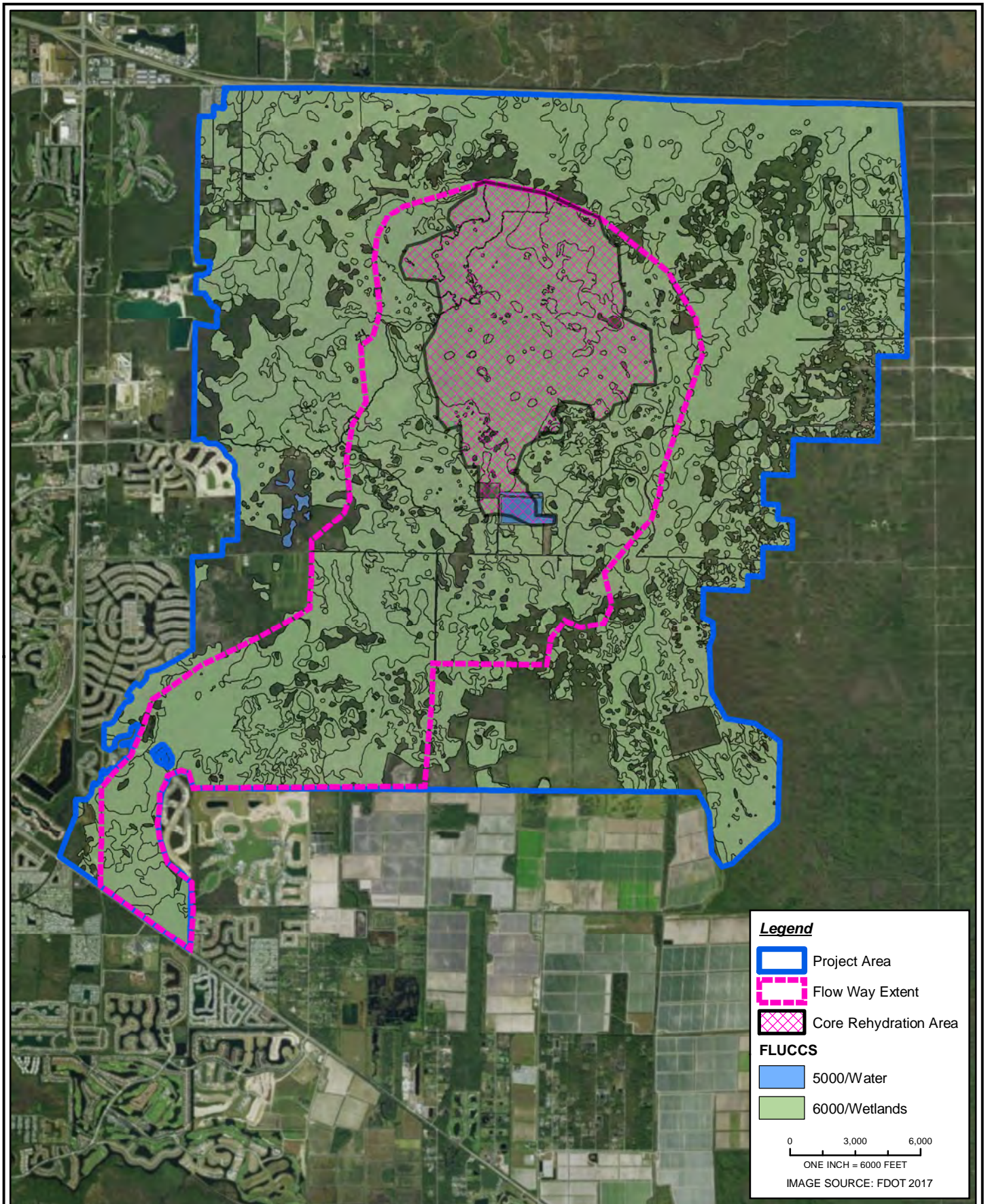

TAYLOR ENGINEERING INC.
 10199 SOUTHSIDE BOULEVARD
 SUITE 310
 JACKSONVILLE, FL 32256
 CERTIFICATE OF AUTHORIZATION # 4815

FIGURE 25
 SOUTHERN FLOWWAY #4
 PROPOSED FLUCCS
 COLLIER COUNTY CWIP
 COLLIER COUNTY, FLORIDA

PROJECT	C2018-052
DRAWN BY	KM
SHEET	
DATE	APR 2020




TAYLOR ENGINEERING INC.
 10199 SOUTHSIDE BOULEVARD
 SUITE 310
 JACKSONVILLE, FL 32256
 CERTIFICATE OF AUTHORIZATION # 4815

FIGURE 26
EXISTING WETLANDS MAP
COLLIER COUNTY CWIP
COLLIER COUNTY, FLORIDA

PROJECT	C2018-052
DRAWN BY	KM
SHEET	
DATE	FEB 2020

FLUCCS	ACRES
512/Channelized Waterways, Canals	29.01
520/Lakes	4.22
530/Reservoirs	97.79
617/Mixed Wetland Hardwoods	26.29
6172/Mixed Shrubs	286.46
6191/Wet Melaleuca	86.33
620/Wetland Coniferous Forests	349.55
621/Cypress	7,134.85
624/Cypress - Pine - Cabbage Palm	7,471.63
625/Wet Pinelands Hydric Pine	2,176.40
630/Wetland Forested Mixed	71.50
641/Freshwater Marshes / Graminoid Prairie - Marsh	8.43
643/Wet Prairie	101.23
644/Emergent Aquatic Vegetation	4.69
TOTAL	17,848.39



TAYLOR ENGINEERING INC.
10199 SOUTHSIDE BOULEVARD
SUITE 310
JACKSONVILLE, FL 32256
CERTIFICATE OF AUTHORIZATION # 4815

FIGURE 27
EXISTING WETLANDS TABLE
COLLIER COUNTY CWIP
COLLIER COUNTY, FLORIDA

PROJECT	C2018-052
DRAWN BY	KM
SHEET	
DATE	FEB 2020