



# Ave Maria (Business Park)

## Land Information:

Zoning: Planned Unit Development (PUD)  
Owner: Ave Maria Development LLLP  
Located in a county Innovation Zone  
Developable Space: 960 acres

## Transportation:

Commercial Airport: SWFL International  
Closest interstates: US 41 (N-S), I-75 (E-W)

## 50-Mile Radius from Property:

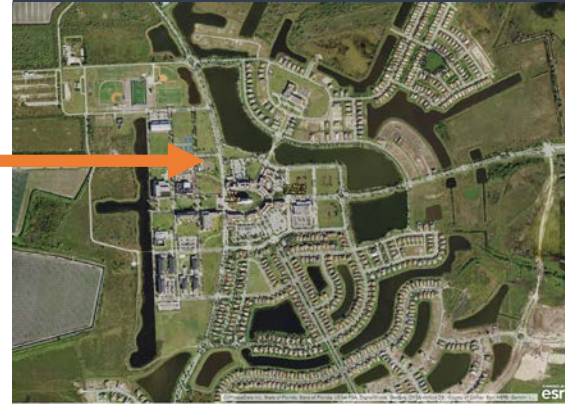
Population: 1,151,244

## Land Uses:

Light manufacturing  
Medical and health manufacturing  
Warehouses  
Millinery shops  
Radio/TV antenna, cell towers, transmitters  
Research design and development  
Stone, clay, glass and concrete products  
Telephone switching center, electric transmission, gas piping, water pumping station  
Textile mill products  
Transportation equipment  
Utility structures, central heating and cooling plants, and cooling towers



Available  
Sites &  
More Info



## *\*Fast Track Permitting*

### • Florida's Business Paradise •

CollierCountyFL.gov/obed  
3510 Kraft Road, Ste. 200,  
Naples, FL 34105  
239-252-8990

