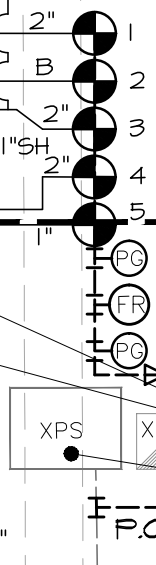


1	1.25"
55 GPM	55 GPM
SPRAY	ROTORS
PR 1.0"	PR .35"

3	1.25"
30 GPM	55 GPM
DRIP	BUBBLERS
PR 1.0"	PR N.A.

5	1.25"
5 GPM	5 GPM
SPRAY	SPRAY
PR 1.0"	PR 1.0"

OVER HEAD WIRE



PROPOSED 2" IRRIGATION SUBMAIN
ELECTRICAL BOXES
EX. PUMP STATION & CONTROLLER
SIDEWALK

IRRIGATION TREE/PALM BUBBLER REFERENCE LEGEND

SYMBOL	TREE/PALM DESCRIPTION	BUBBLER NOZZLE DISCH. SETTING
	LIGUSTRUM	6± GPM
	PYGMY DATE PALM - TRIPLE	4± GPM
	PYGMY DATE PALM - SINGLE	4± GPM
	FLORIDA THATCH PALM	2± GPM
	SILVER THRINAX PALM	2± GPM

BUBBLER INSTALLATION NOTES:

- 1- BUBBLERS SHALL BE PLACED AT THE EDGE OF THE ROOTBALL.
- 2- BUBBLERS SHALL BE PLACED UPHILL FROM THE ROOTBALL WHEN LOCATED ON SLOPING GROUND.
- 3- SECURE BUBBLER TO THE GROUND USING SOIL ANCHOR STAKES. TUBING SECTION SHALL BE BURIED BELOW GRADE AS MUCH AS POSSIBLE WHEN PRACTICAL.

IRRIGATION PLAN

SCALE: 1" = 100'

GENERAL IRRIGATION NOTES

GENERAL IRRIGATION NOTES