

AN ORDINANCE AMENDING ORDINANCE 91-102, THE COLLIER COUNTY LAND DEVELOPMENT CODE, TO CORRECT EXISTING SCRIVENER'S ERRORS ON OFFICIAL ZONING ATLAS MAPS NUMBERED 872930, 482728, 462930, 6934S, 7902S, 7903N, 7903S, 8510N, 8510S, 8515S, 8527N, 9511N, and 9511S, REFERRING TO CHANGING VARIOUS ZONING DISTRICTS FROM I-IND TO I, I-IND TO C-5, AND A TO A-MHO FOR PROPERTIES LOCATED THROUGHOUT COLLIER COUNTY, FLORIDA; AND BY PROVIDING FOR AN EFFECTIVE DATE.

SECRETARY OF STATE

MAY 30 2 13 PM '95

FILED

WHEREAS, the Collier County Board of County Commissioners adopted Ordinance No. 91-102, the Collier County Land Development Code, on October 13, 1991, and

WHEREAS, following said action adopting Ordinance No. 91-102, the Collier County Land Development Code, staff was advised that the site's zoning classification was in error and its correction constitutes a scrivener's error.

NOW, THEREFORE BE IT ORDAINED, by the Board of County Commissioners of Collier County, Florida:

SECTION ONE:

The Zoning Atlas Maps, of various Collier County properties, as approved by the adoption of Ordinance No. 91-102, the Collier County Land Development Code, are hereby amended to read as follows:

<u>MAP NUMBER</u>	<u>REVISION</u>
872930	Add MHO to A designation to read A-MHO
482728	Add MHO to A designation to read A-MHO (except NE corner of Sec. 9 to remain as "A").
462930	Change I-IND to I
6934s	Change I-IND to I & (I-IND to C-5 between Charlotte ST. & Broward Street).
7902s	Change I-IND to I
7903n	Change I-IND to I & (I-IND to C-5 between First ST. & New Market Road).
7903s	Change I-IND to I & (I-IND to C-5 between Rose Ave. & SR-846).
8510n	Change I-IND to I
8510s	Change I-IND to I
8515s	Change I-IND to I
8527n	Change I-IND to I
9511n	Change I-IND to I
9511s	Change I-IND to I

SECTION TWO: EFFECTIVE DATE

This Ordinance shall become effective upon receipt of notice from the Secretary of State that this Ordinance has been filed with the Secretary of State.

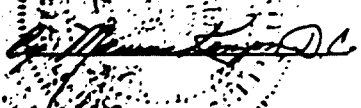
Words ~~struck through~~ are deleted; words underlined are added.

PASSED AND DULY ADOPTED by the Board of County Commissioners of

Collier County, Florida, this 23 day of May, 1995.

ATTEST:

DWIGHT E. BROOK, CLERK



BOARD OF COUNTY COMMISSIONERS
COLLIER COUNTY, FLORIDA

BY: 
BETTYE J. MATTHEWS, CHAIRMAN

APPROVED AS TO FORM AND
LEGAL SUFFICIENCY:

Marjorie M. Student
MARJONIE M. STUDENT
ASSISTANT COUNTY ATTORNEY

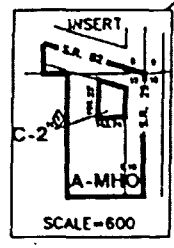
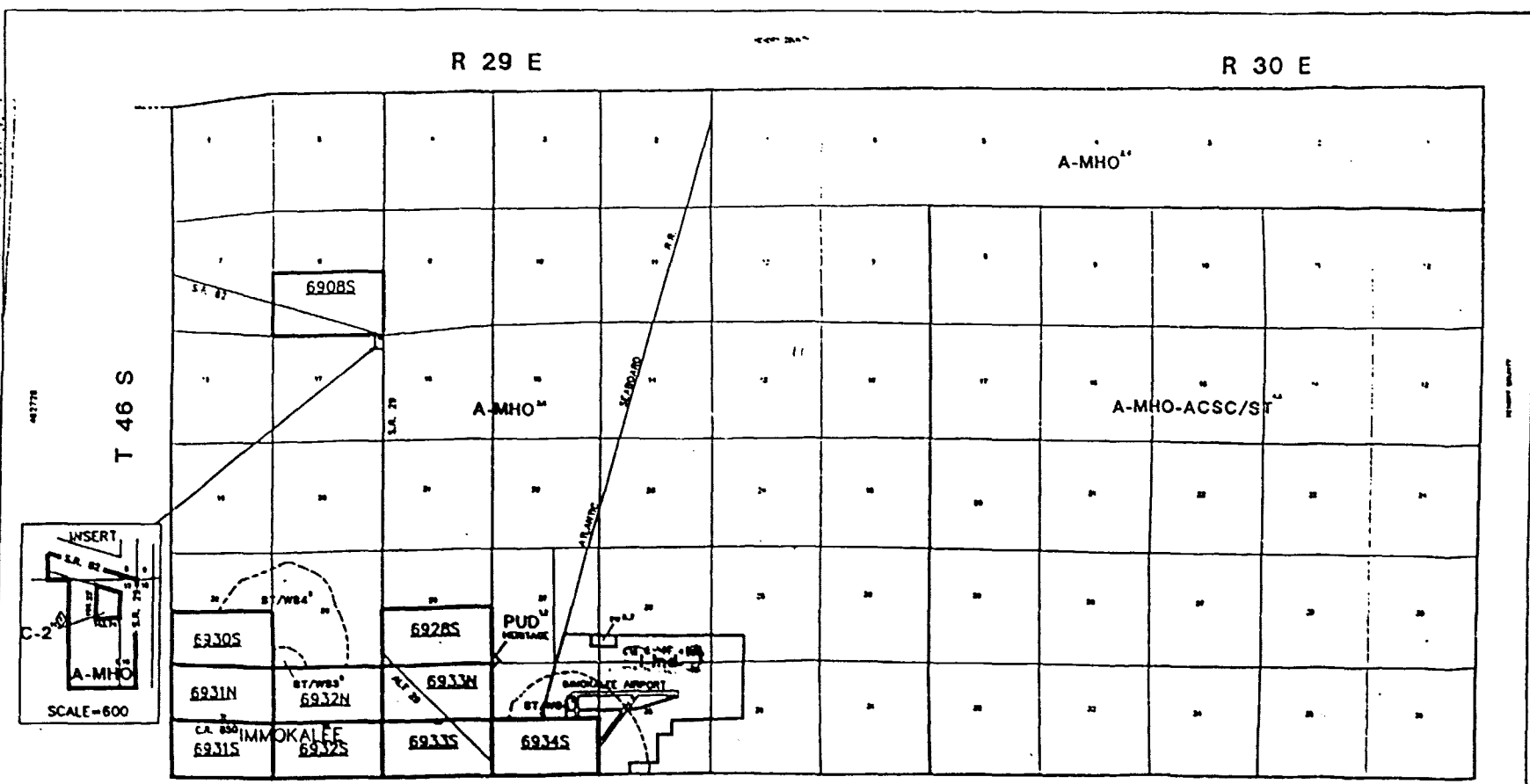
SCRIVENER'S ERROR ORDINANCE/lqk/13665

This ordinance filed with the
Secretary of State's Office the
30th day of May, 1995
and acknowledgment of that
filing received this 2nd day
of June, 1995
By: James Barrett
Deputy Clerk

Words ~~struck through~~ are deleted; words underlined are added.

The Historic / Archaeological
Probability Maps are the official
County source designating
historic or archaeological resources.

LAST REVISION
ZONING
6/7/94-OTHER



-----INDICATES SPECIAL TREATMENT OVERLAY

DISPOSITION SHEET			
NO.	DATE	BY	REVISION

1 2 3 4 5 6 7 8 9 10 11 12 13 14 15 16 17 18 19 20 21 22 23 24 25 26 27 28 29 30 31 32 33 34 35 36 37 38 39 40 41 42 43 44 45 46 47 48 49 50 51 52 53 54 55 56 57 58 59 60 61 62 63 64 65 66 67 68 69 70 71 72 73 74 75 76 77 78 79 80 81 82 83 84 85 86 87 88 89 90 91 92 93 94 95 96 97 98 99 100	1 2 3 4 5 6 7 8 9 10 11 12 13 14 15 16 17 18 19 20 21 22 23 24 25 26 27 28 29 30 31 32 33 34 35 36 37 38 39 40 41 42 43 44 45 46 47 48 49 50 51 52 53 54 55 56 57 58 59 60 61 62 63 64 65 66 67 68 69 70 71 72 73 74 75 76 77 78 79 80 81 82 83 84 85 86 87 88 89 90 91 92 93 94 95 96 97 98 99 100
--	--

THIS IS TO CERTIFY THAT THIS IS A TRUE AND CORRECT COPY OF THE OFFICIAL ZONING MAP AS REPRODUCED TO AND APPROVED IN ACCORDANCE WITH SECTION 218.04(2) OF THE CHARTER OF COLLEGE PARK, ALABAMA, ADOPTED OCTOBER 10, 1994.

James A. ...
...

FLOOD INSURANCE RATE MAP INFORMATION

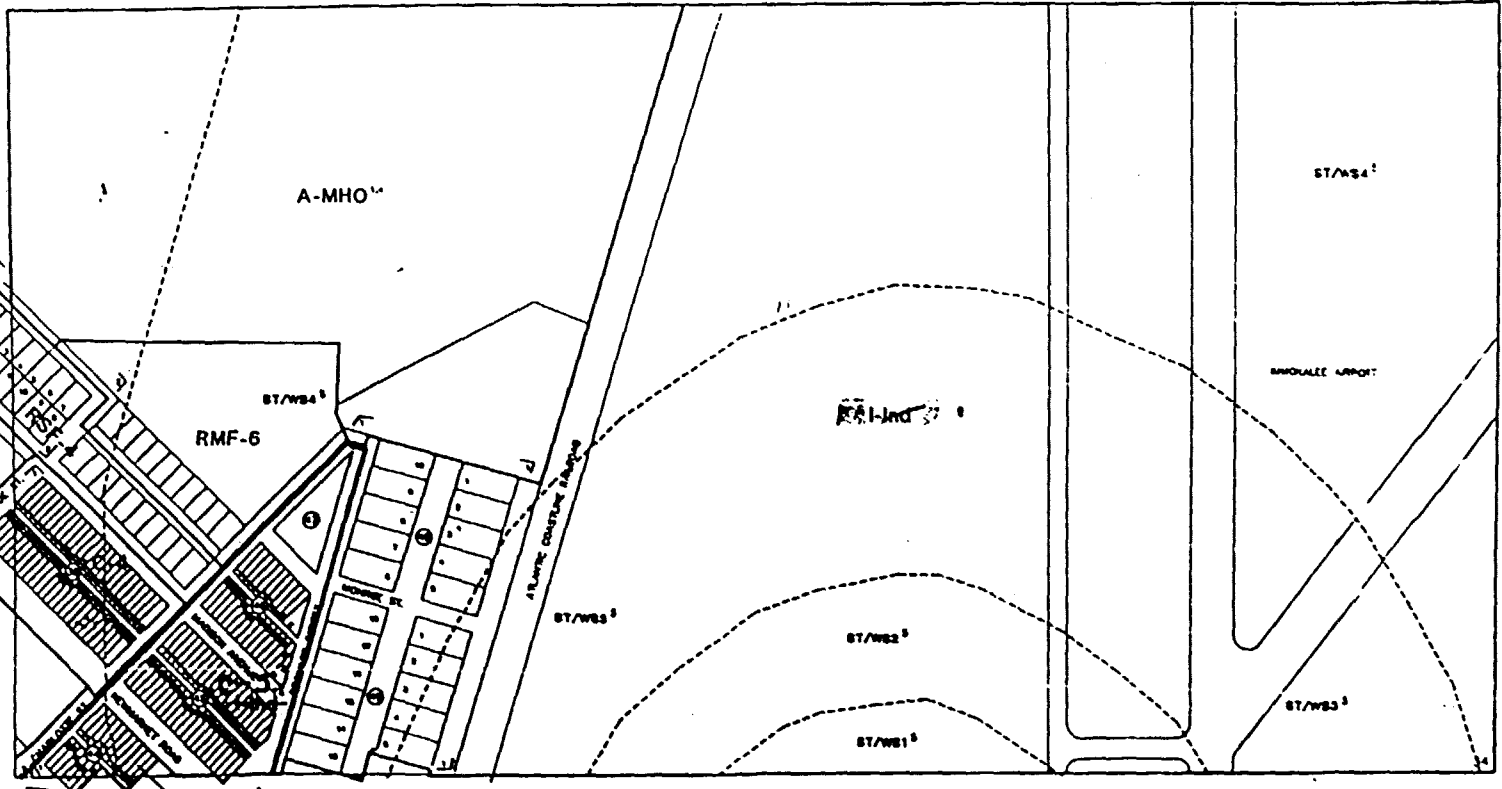
COMMUNITY NUMBER: 120067 PANEL NUMBER: 0728, 0800
 FEDERAL REGULAR FLOODING DATE: JUNE 3, 1993
 FLOOD ZONE: ... OR AS SHOWN ON MAP.

COLLEGE COUNTY, FLORIDA
 COMMUNITY DEVELOPMENT DIVISION
 TWP 46S RING 29E & 30E
 MAP NUMBER: 4629.30

42130

The Historic / Archaeological
Probability Maps are the Official
County source designating
historic or archaeological resources.

LAST REVISION
ZONING
4/19/94 OTHER



SUBDIVISION PRICE		SUBDIVISION PRICE	
NO.	PRICE	NO.	PRICE
1	1000	1	1000
2	2000	2	2000
3	3000	3	3000
4	4000	4	4000
5	5000	5	5000
6	6000	6	6000
7	7000	7	7000
8	8000	8	8000
9	9000	9	9000
10	10000	10	10000

1 2 3 4 5 6 7 8 9 10 11 12 13 14 15 16 17 18 19 20 21 22 23 24 25 26 27 28 29 30 31 32 33 34 35 36 37 38 39 40 41 42 43 44 45 46 47 48 49 50 51 52 53 54 55 56 57 58 59 60 61 62 63 64 65 66 67 68 69 70 71 72 73 74 75 76 77 78 79 80 81 82 83 84 85 86 87 88 89 90 91 92 93 94 95 96 97 98 99 100	1 2 3 4 5 6 7 8 9 10 11 12 13 14 15 16 17 18 19 20 21 22 23 24 25 26 27 28 29 30 31 32 33 34 35 36 37 38 39 40 41 42 43 44 45 46 47 48 49 50 51 52 53 54 55 56 57 58 59 60 61 62 63 64 65 66 67 68 69 70 71 72 73 74 75 76 77 78 79 80 81 82 83 84 85 86 87 88 89 90 91 92 93 94 95 96 97 98 99 100
--	--

This is to certify that this is a true and correct copy of the original zoning map as shown to and approved by the Board of County Commissioners of Collier County, Florida, on the 19th day of April, 1994.

James R. Castagna
Mayor

COLLIER COUNTY, FLORIDA

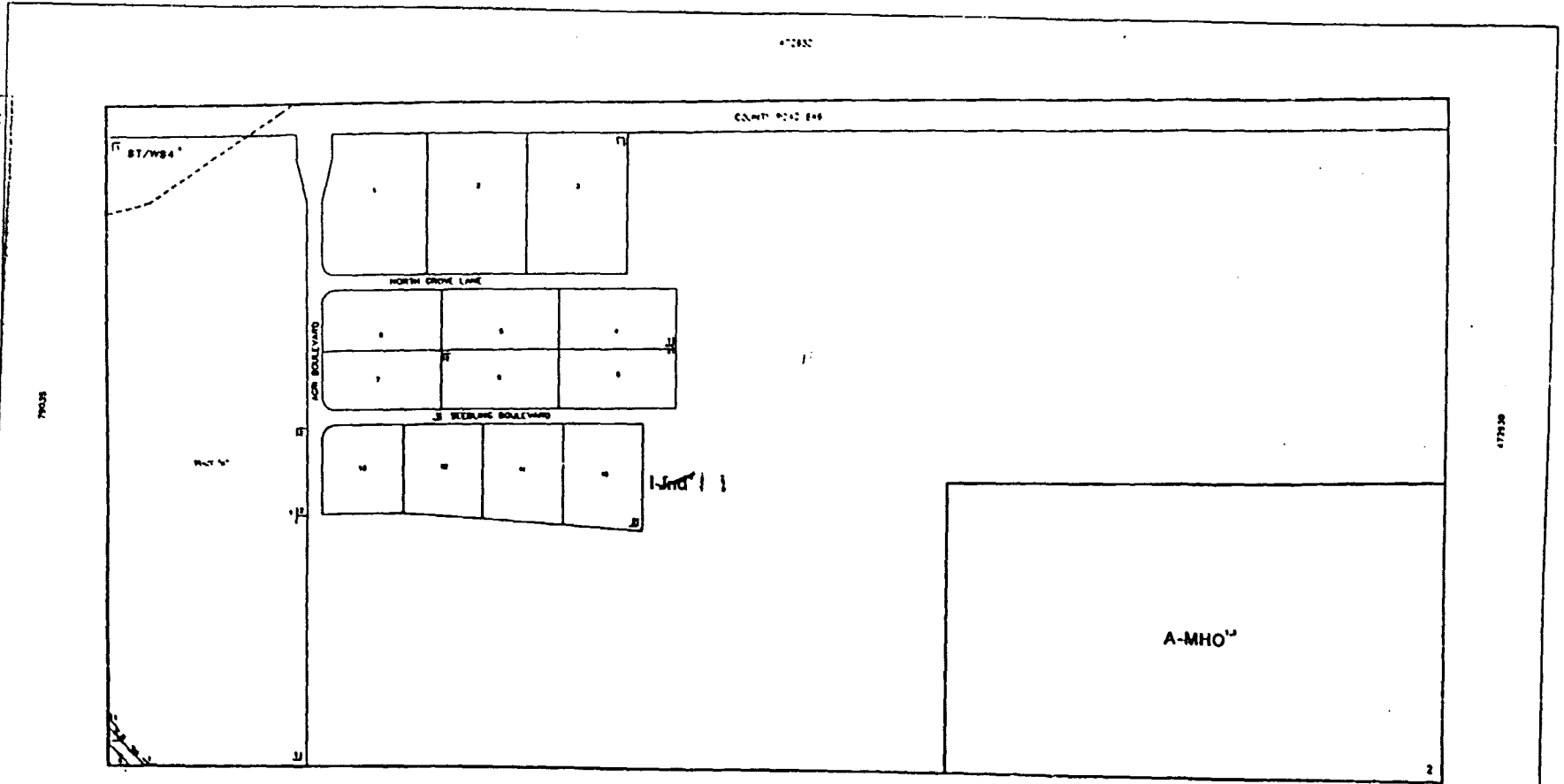
COMMUNITY DEVELOPMENT DIVISION

TWP 46S RING 29E SECS 34 35 36 37

MAP NUMBER: 88345

The Historic / Archaeological
Probability Maps are the official
County source designating
historic or archaeological resources.

LAST REVISION
ZONING
5/17/94
OTHER



----- INDICATES SPECIAL TREATMENT OVERLAY

NO.	DATE	DESCRIPTION	BY	CHKD.

APPROVED BY: _____

DATE: _____

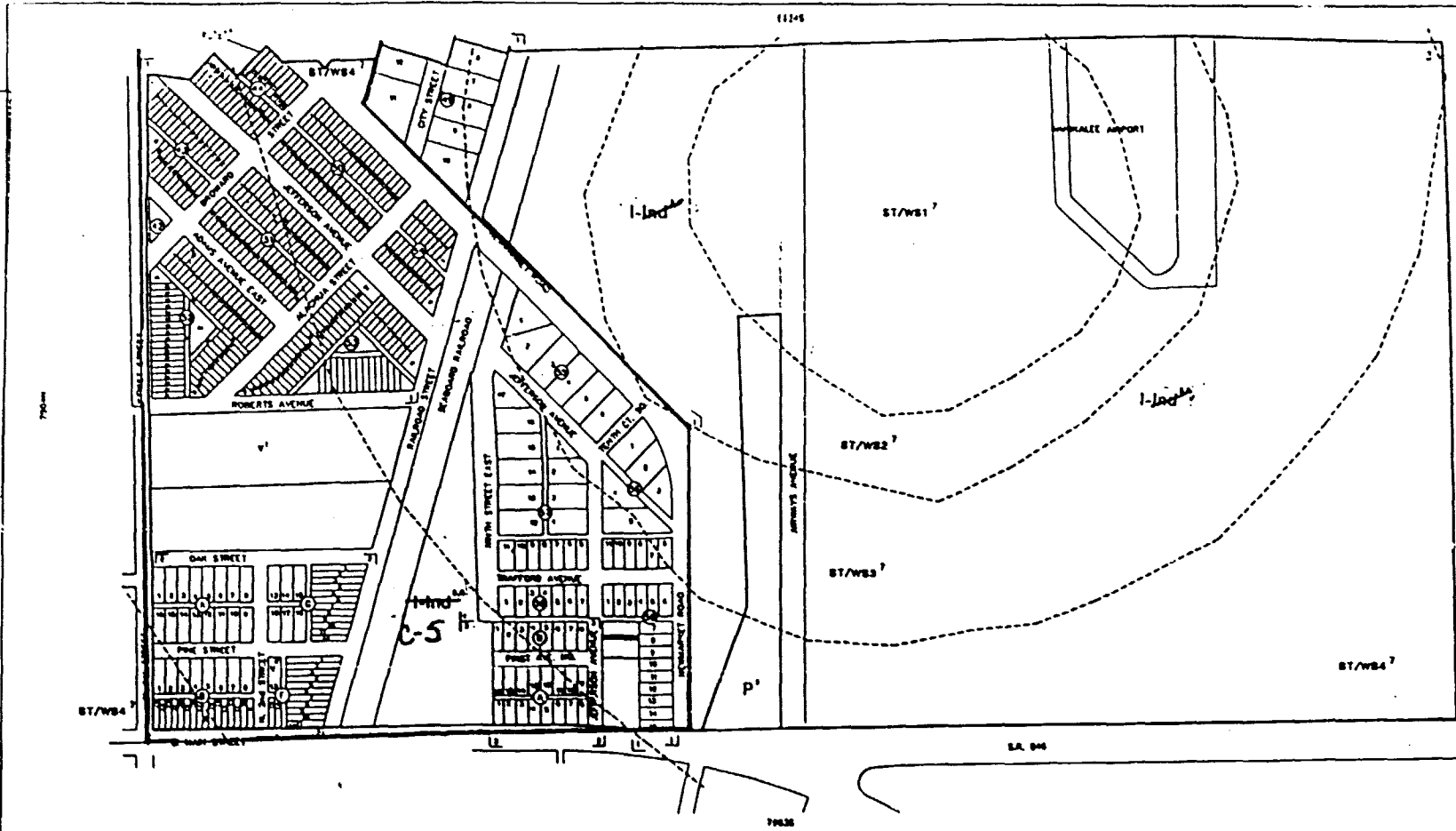
THIS IS TO CERTIFY THAT THIS IS A PAGE OF THE OFFICIAL ZONING MAP AS ADORDED TO AND AMENDED BY ORDINANCE NO. 20-002 OF THE COUNTY OF COLLEGE, FLORIDA, ADOPTED OCTOBER 20, 1993.

James A. Cast
Maureen Simpson

PLAT ASSURANCE STATE MAP INFORMATION	
COUNTY MAP NO. 2007 PANEL NUMBER 100 B	
PROVISIONS EFFECTIVE DATE: 1/1/94	
PLAT SHOW ALL 20' OR AS SHOWN ON MAP.	
COLLIER COUNTY, FLORIDA	
COMMUNITY DEVELOPMENT DIVISION	
TWP 47S 04E 29E SEC(s) 625	MAP NUMBER
	79025

The Historic / Archaeological Probability Maps are the official County source designating historic or archaeological resources.

LAST REVISION ZONING
4/15/64 OTHER



----- INDICATES SPECIAL TREATMENT OVERLAY

SUBDIVISION INDEX	

THIS IS TO CERTIFY THAT THIS IS A PAGE OF THE ORIGINAL RECORDS ALSO REFERRED TO AND APPROVED HEREIN BY ORDINANCE NO. 10-1887 OF THE COUNTY OF COLLIER, FLORIDA, ADOPTED OCTOBER 15, 1964.

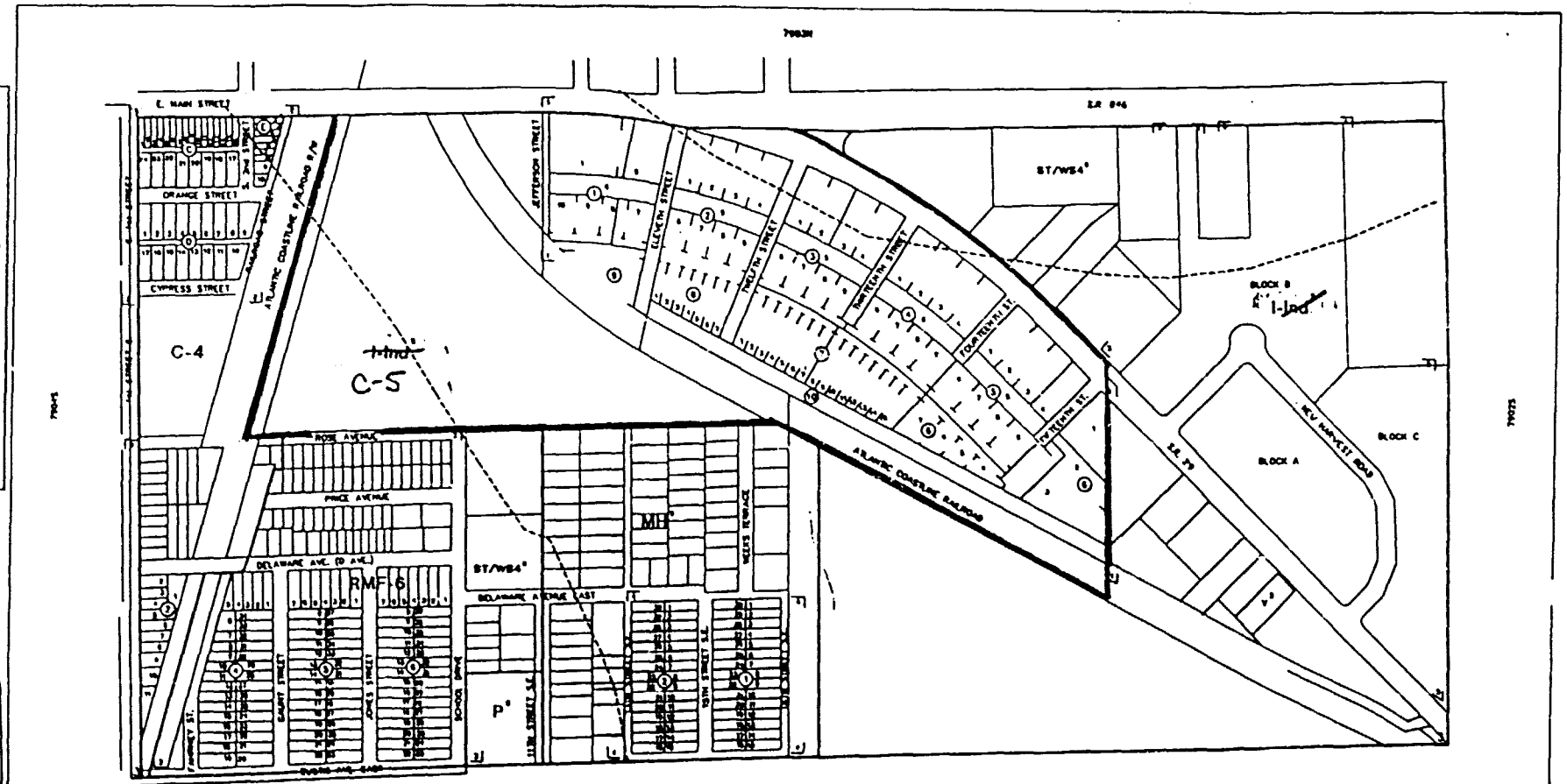
Emily R. ...
...

FLOOD DAMAGE RATE MAP INFORMATION

COMMUNITY NUMBER 120087	PANEL NUMBER 1000
PROJECT NUMBER 475	EFFECTIVE DATE JAN. 1, 1968
FLOOD ZONE ALL AS SHOWN ON MAP.	
COLLIER COUNTY, FLORIDA	
COMMUNITY DEVELOPMENT DIVISION	
TWP 47S R04C 20E SEC(S) 03 N01/2	SCALE
DATE	MAP NUMBER
	7903N

The Historic / Archaeological
Probability Maps are the official
County source designating
historic or archaeological resources.

LAST REVISION
ZONING
4/28/54 OTHER



----- INDICATES SPECIAL TREATMENT OVERLAY

SUSPENSION CODE	
1	2
3	4
5	6
7	8
9	10
11	12
13	14
15	16
17	18
19	20
21	22
23	24
25	26
27	28
29	30
31	32
33	34
35	36
37	38
39	40
41	42
43	44
45	46
47	48
49	50
51	52
53	54
55	56
57	58
59	60
61	62
63	64
65	66
67	68
69	70
71	72
73	74
75	76
77	78
79	80
81	82
83	84
85	86
87	88
89	90
91	92
93	94
95	96
97	98
99	100

1	2
3	4
5	6
7	8
9	10
11	12
13	14
15	16
17	18
19	20
21	22
23	24
25	26
27	28
29	30
31	32
33	34
35	36
37	38
39	40
41	42
43	44
45	46
47	48
49	50
51	52
53	54
55	56
57	58
59	60
61	62
63	64
65	66
67	68
69	70
71	72
73	74
75	76
77	78
79	80
81	82
83	84
85	86
87	88
89	90
91	92
93	94
95	96
97	98
99	100

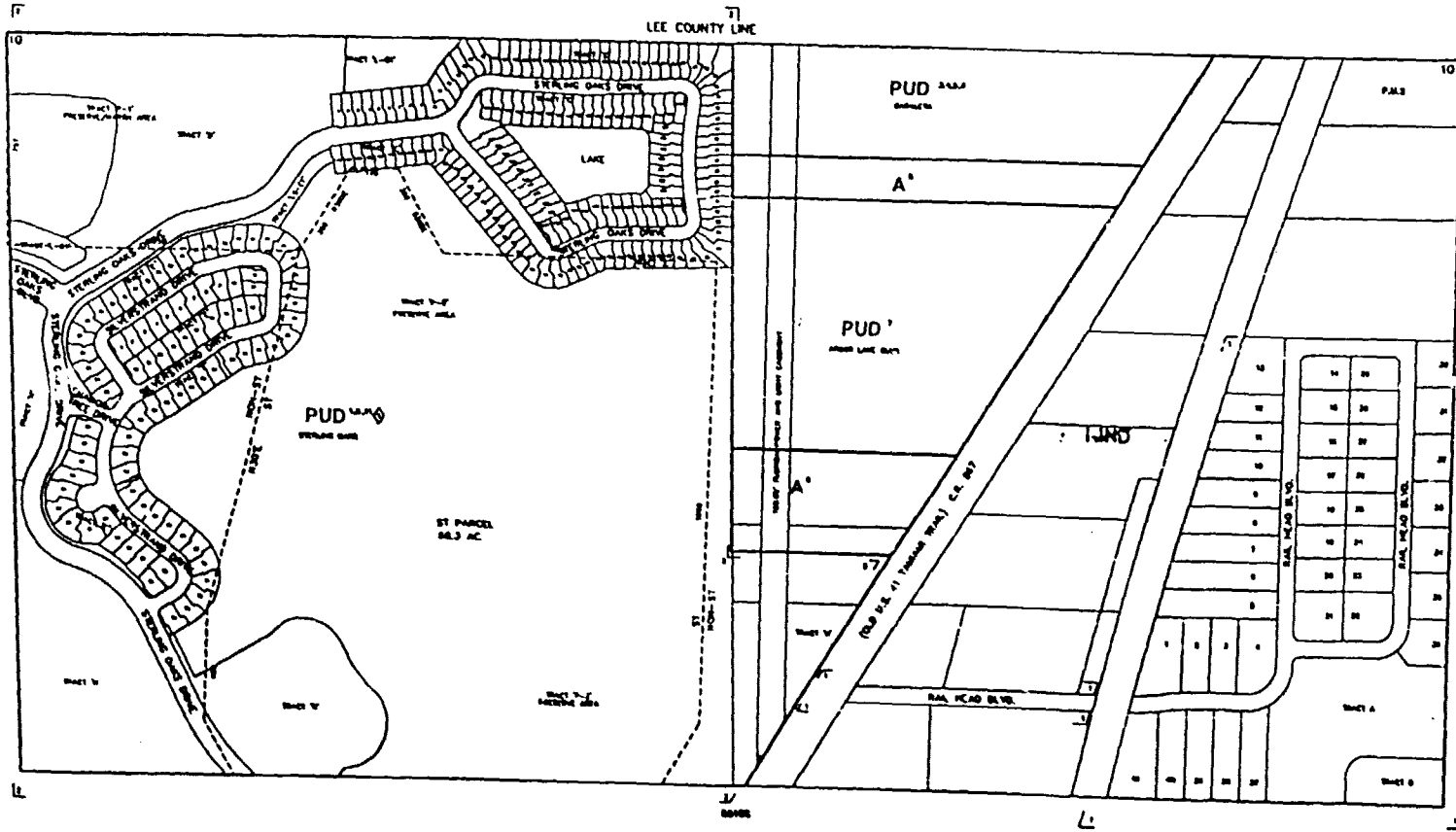
THIS IS TO CERTIFY THAT THIS IS A TRUE AND CORRECT COPY OF THE OFFICIAL ZONING MAP AS REFERRED TO AND ADJUSTED PURSUANT TO ORDINANCE NO. 28-54 OF THE COUNTY OF COLLIER, FLORIDA, ADOPTED ON APRIL 28, 1954.

James H. Cantelero
Marion L. Brown

FLOOD INSURANCE RATE MAP INFORMATION	
COMMUNITY NUMBER	12887
PANEL NUMBER	1582
PROGRAM	FEDL-1
EFFECTIVE DATE	JUNE 3, 1958
FLOOD ZONE	ALL B-1 AS SHOWN ON MAP
COLLIER COUNTY, FLORIDA	
COMMUNITY DEVELOPMENT DIVISION	
TWP	47S RANG 29E SEC(S) 3 80.1/2
SCALE	MAP NUMBER
	79035

The Historic / Archaeological
Probability Maps are the official
County source designating
historic or archaeological resources.

LAST REVISION
ZONING
4/28/95 OTHER



----- INDICATES SPECIAL TREATMENT OVERLAY

SUBDIVISION INDEX	
10	11
12	13
14	15
16	17
18	19
20	21
22	23
24	25
26	27
28	29
30	31
32	33
34	35
36	37
38	39
40	41
42	43
44	45
46	47
48	49
50	51
52	53
54	55
56	57
58	59
60	61
62	63
64	65
66	67
68	69
70	71
72	73
74	75
76	77
78	79
80	81
82	83
84	85
86	87
88	89
90	91
92	93
94	95
96	97
98	99
100	101

<p>1. ZONING DISTRICTS</p> <p>2. SUBDIVISIONS</p> <p>3. LOTS</p> <p>4. STREETS</p> <p>5. ALLEYS</p> <p>6. EASEMENTS</p> <p>7. ENCUMBRANCES</p> <p>8. UNLAWFUL USES</p> <p>9. UNLAWFUL BUILDINGS</p> <p>10. UNLAWFUL OCCUPANCIES</p> <p>11. UNLAWFUL STRUCTURES</p> <p>12. UNLAWFUL SIGNAGE</p> <p>13. UNLAWFUL ADVERTISEMENTS</p> <p>14. UNLAWFUL LIGHTS</p> <p>15. UNLAWFUL SOUNDS</p> <p>16. UNLAWFUL VIBRATIONS</p> <p>17. UNLAWFUL ODORS</p> <p>18. UNLAWFUL POLLUTION</p> <p>19. UNLAWFUL TRAFFIC</p> <p>20. UNLAWFUL PARKING</p> <p>21. UNLAWFUL LOADING</p> <p>22. UNLAWFUL UNLOADING</p> <p>23. UNLAWFUL STORAGE</p> <p>24. UNLAWFUL DISPLAYS</p> <p>25. UNLAWFUL OBSTRUCTIONS</p> <p>26. UNLAWFUL ENCROACHMENTS</p> <p>27. UNLAWFUL INTERFERENCES</p> <p>28. UNLAWFUL HARMFUL USES</p> <p>29. UNLAWFUL HARMFUL OCCUPANCIES</p> <p>30. UNLAWFUL HARMFUL STRUCTURES</p> <p>31. UNLAWFUL HARMFUL SIGNAGE</p> <p>32. UNLAWFUL HARMFUL ADVERTISEMENTS</p> <p>33. UNLAWFUL HARMFUL LIGHTS</p> <p>34. UNLAWFUL HARMFUL SOUNDS</p> <p>35. UNLAWFUL HARMFUL VIBRATIONS</p> <p>36. UNLAWFUL HARMFUL ODORS</p> <p>37. UNLAWFUL HARMFUL POLLUTION</p> <p>38. UNLAWFUL HARMFUL TRAFFIC</p> <p>39. UNLAWFUL HARMFUL PARKING</p> <p>40. UNLAWFUL HARMFUL LOADING</p> <p>41. UNLAWFUL HARMFUL UNLOADING</p> <p>42. UNLAWFUL HARMFUL STORAGE</p> <p>43. UNLAWFUL HARMFUL DISPLAYS</p> <p>44. UNLAWFUL HARMFUL OBSTRUCTIONS</p> <p>45. UNLAWFUL HARMFUL ENCROACHMENTS</p> <p>46. UNLAWFUL HARMFUL INTERFERENCES</p> <p>47. UNLAWFUL HARMFUL USES</p> <p>48. UNLAWFUL HARMFUL OCCUPANCIES</p> <p>49. UNLAWFUL HARMFUL STRUCTURES</p> <p>50. UNLAWFUL HARMFUL SIGNAGE</p> <p>51. UNLAWFUL HARMFUL ADVERTISEMENTS</p> <p>52. UNLAWFUL HARMFUL LIGHTS</p> <p>53. UNLAWFUL HARMFUL SOUNDS</p> <p>54. UNLAWFUL HARMFUL VIBRATIONS</p> <p>55. UNLAWFUL HARMFUL ODORS</p> <p>56. UNLAWFUL HARMFUL POLLUTION</p> <p>57. UNLAWFUL HARMFUL TRAFFIC</p> <p>58. UNLAWFUL HARMFUL PARKING</p> <p>59. UNLAWFUL HARMFUL LOADING</p> <p>60. UNLAWFUL HARMFUL UNLOADING</p> <p>61. UNLAWFUL HARMFUL STORAGE</p> <p>62. UNLAWFUL HARMFUL DISPLAYS</p> <p>63. UNLAWFUL HARMFUL OBSTRUCTIONS</p> <p>64. UNLAWFUL HARMFUL ENCROACHMENTS</p> <p>65. UNLAWFUL HARMFUL INTERFERENCES</p>	<p>1. ZONING DISTRICTS</p> <p>2. SUBDIVISIONS</p> <p>3. LOTS</p> <p>4. STREETS</p> <p>5. ALLEYS</p> <p>6. EASEMENTS</p> <p>7. ENCUMBRANCES</p> <p>8. UNLAWFUL USES</p> <p>9. UNLAWFUL BUILDINGS</p> <p>10. UNLAWFUL OCCUPANCIES</p> <p>11. UNLAWFUL STRUCTURES</p> <p>12. UNLAWFUL SIGNAGE</p> <p>13. UNLAWFUL ADVERTISEMENTS</p> <p>14. UNLAWFUL LIGHTS</p> <p>15. UNLAWFUL SOUNDS</p> <p>16. UNLAWFUL VIBRATIONS</p> <p>17. UNLAWFUL ODORS</p> <p>18. UNLAWFUL POLLUTION</p> <p>19. UNLAWFUL TRAFFIC</p> <p>20. UNLAWFUL PARKING</p> <p>21. UNLAWFUL LOADING</p> <p>22. UNLAWFUL UNLOADING</p> <p>23. UNLAWFUL STORAGE</p> <p>24. UNLAWFUL DISPLAYS</p> <p>25. UNLAWFUL OBSTRUCTIONS</p> <p>26. UNLAWFUL ENCROACHMENTS</p> <p>27. UNLAWFUL INTERFERENCES</p>
--	--

THIS IS TO CERTIFY THAT THIS IS A PAGE OF THE OFFICIAL ZONING MAPS REQUIRED TO AND COMPLETELY REVISIONS BY ORDINANCE NO. 95-102 OF THE COUNTY OF COLLIER, FLORIDA, ADOPTED OCTOBER 24, 1995.

James J. Costello
Mayor

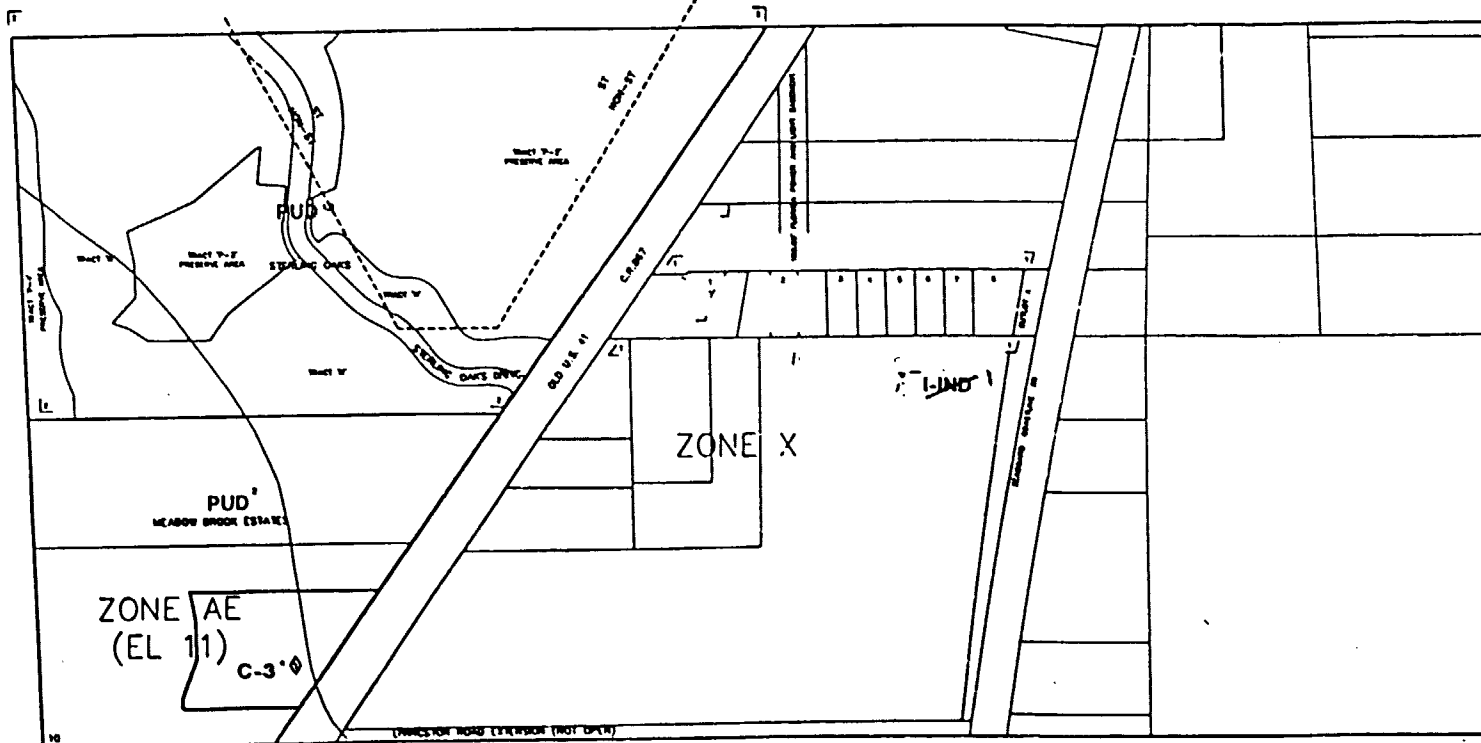
FLOOD INSURANCE RATE MAP INFORMATION

COUNTY NUMBER: 120007 PANEL NUMBER: 1000000000
PROGRAM: REGULAR DATE: APRIL 2, 1998
FLOOD ZONE: ALL AREAS SHOWN ON MAP

COLLIER COUNTY, FLORIDA
COMMUNITY DEVELOPMENT DIVISION
TRIP 400 RING 230 SEC(S) 10 NO 1/2
MAP NUMBER: 8310N

The Historic / Archaeological
Probability Maps are the official
County source designating
historic or archaeological resources.

LAST REVISION
ZONING
2/15/92 OTHER



----- INDICATES SPECIAL TREATMENT OVERLAY

SUBDIVISION INDEX			
NO.	NAME	P.A.	P.D.
1	MEADOW BROOK ESTATE PUD	8-2	10-8
2	STEERING CANAL	8-2	10-8
3			
4			

<p>ST. JOHNS ST</p> <p>OLD U.S. 90 CORRIDOR</p> <p>STEERING CANAL</p> <p>SUNNY DAYS DRWG</p> <p>MEADOW BROOK ESTATE PUD</p> <p>ZONE AE (EL 11) C-3</p> <p>ZONE X</p> <p>PUD 3</p>	<p>INDICATES SPECIAL TREATMENT OVERLAY</p>
---	--

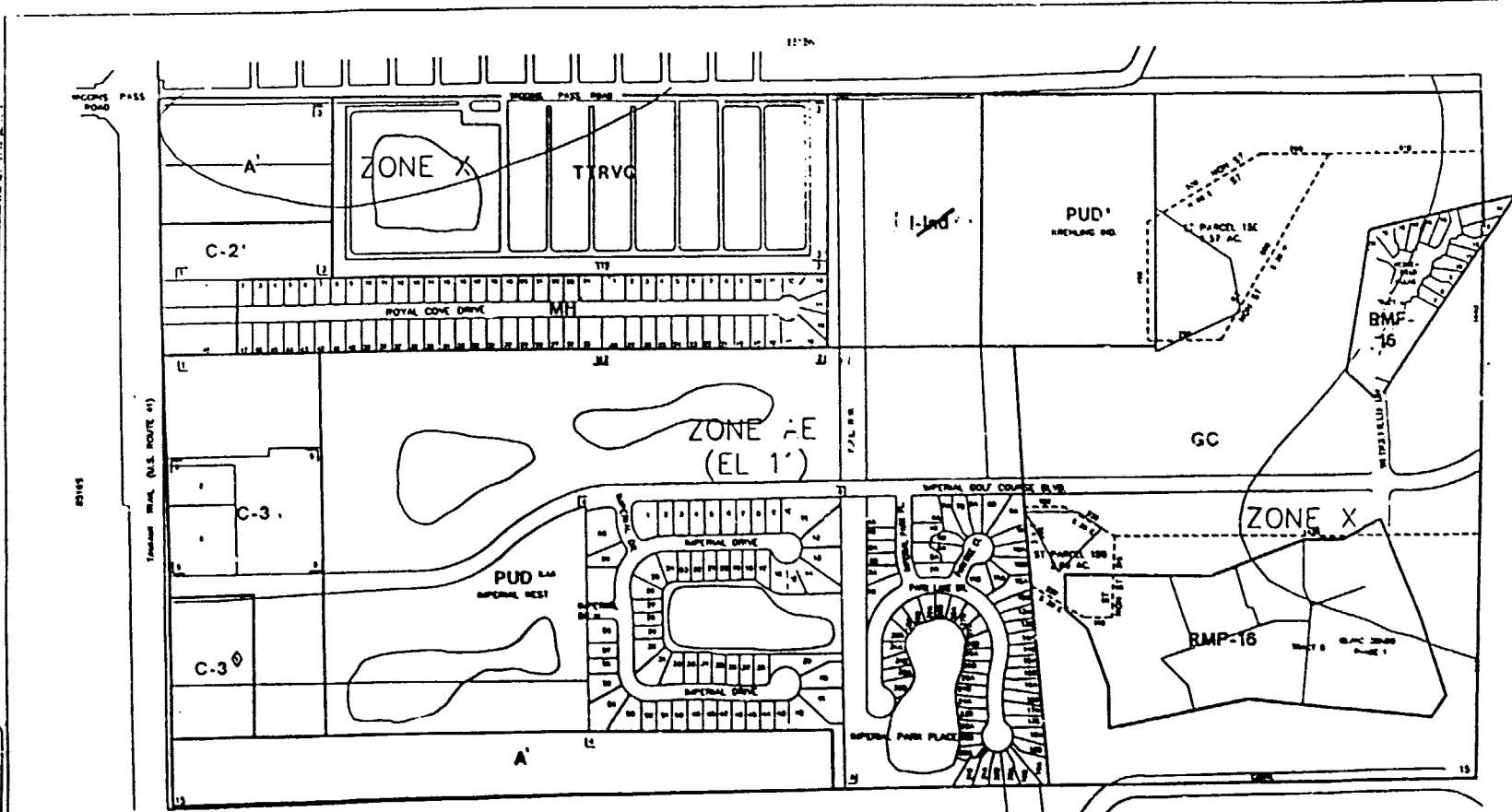
THIS IS TO CERTIFY THAT THIS IS A PAGE OF THE OFFICIAL ZONING ACT AS REFERRED TO AND CONTROLLED BY ORDINANCE NO. 91-008 OF THE COUNTY OF COLLIER, FLORIDA, ADOPTED OCTOBER 23, 1991.

James H. Cast...
Alvan...

FLOOD INSURANCE RATE MAP INFORMATION	
COMMUNITY NUMBER: 120067	PANEL NUMBER: 10'0
PROGRAM REVISION:	EFFECTIVE DATE: JUNE 3, 1988
FLOOD ZONE: ALL 'L' OR AS SHOWN ON MAP	
COLLIER COUNTY, FLORIDA	
COMMUNITY DEVELOPMENT DIVISION	
TWP 48S R9W 25E (SECT) 10 SD 1/2	
DATE:	MAP NUMBER:
	85105

The Historic / Archaeological
Probability Maps are the official
County source designating
historic or archaeological resources.

LAST REVISION:
ZONING
5/15/14
OTHER



----- INDICATES SPECIAL TREATMENT OVERLAY

<p>1. UNZONED</p> <p>2. ZONING</p> <p>3. SPECIAL TREATMENT OVERLAY</p>	<p>4. HISTORIC / ARCHAEOLOGICAL PROBABILITY</p> <p>5. HISTORIC / ARCHAEOLOGICAL RESOURCE</p>
--	--

<p>6. HISTORIC / ARCHAEOLOGICAL PROBABILITY</p> <p>7. HISTORIC / ARCHAEOLOGICAL RESOURCE</p>	<p>8. HISTORIC / ARCHAEOLOGICAL PROBABILITY</p> <p>9. HISTORIC / ARCHAEOLOGICAL RESOURCE</p>
--	--

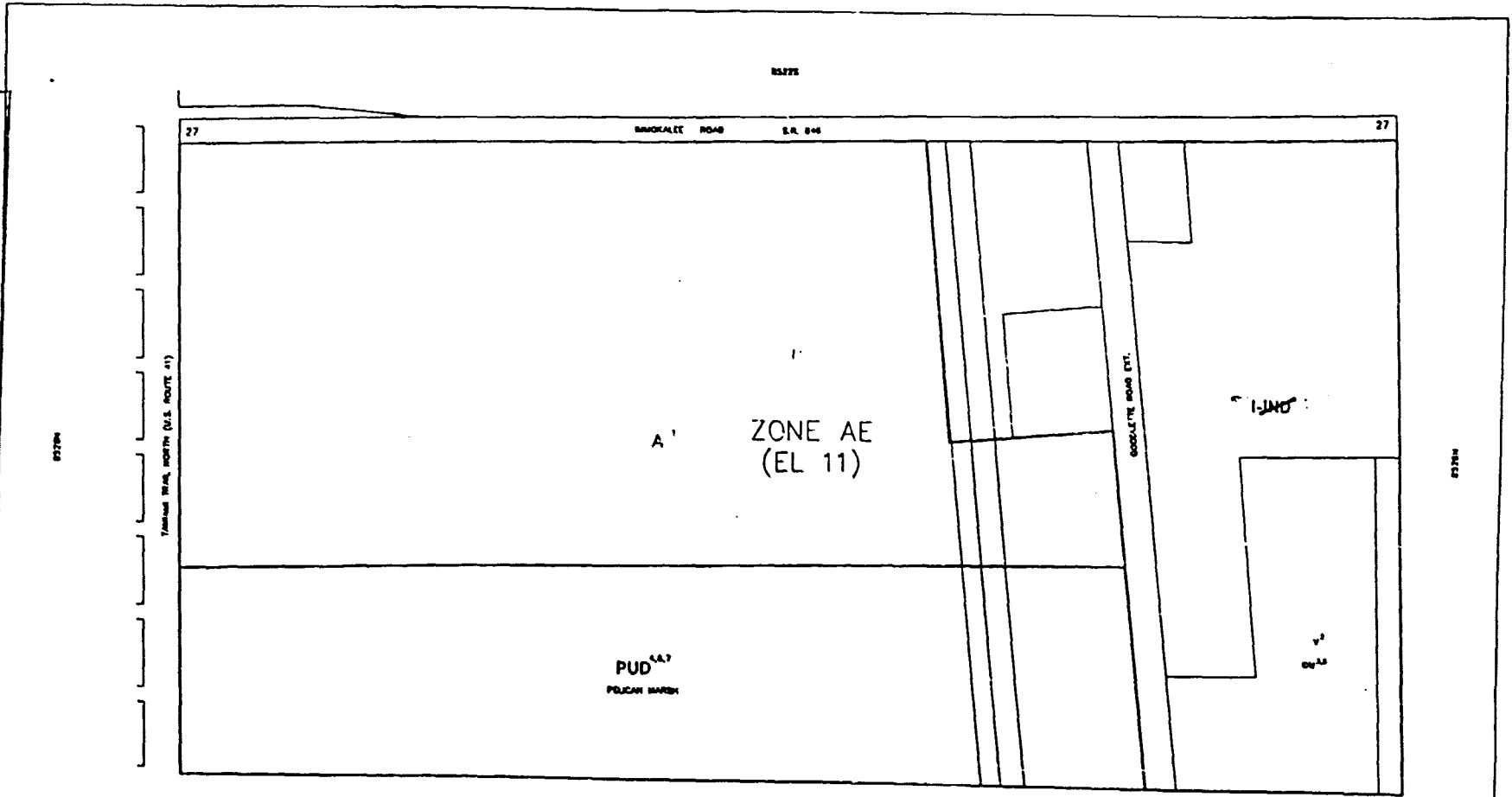
THIS IS TO CERTIFY THAT THIS IS A PAGE OF THE OFFICIAL ZONING MAP AS REPORTED TO AND APPROVED PURSUANT TO ORDINANCE NO. 14-001 OF THE COUNTY OF COLLIER, FLORIDA, ADOPTED OCTOBER 20, 2014.

Frank A. Castaldi
Mayor

<p>PLANS ASSURANCE STATE MAP INFORMATION</p>	
<p>COUNTY NUMBER 120877</p>	<p>PANEL NUMBER 1940</p>
<p>PROGRAM REGULAR</p>	<p>DATE RECEIVED DATE: APR 2, 2018</p>
<p>PLANNING COMMISSION</p>	<p>DATE AS SHOWN ON MAP</p>
<p>COLLIER COUNTY, FLORIDA</p>	
<p>COMMUNITY DEVELOPMENT DIVISION</p>	
<p>MAP 485 (RMC 25K SCALE) 15 30 1/2</p>	<p>MAP NUMBER 85155</p>

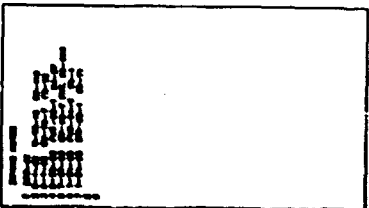
T. 18 Historic / Archaeological
Probability Maps are the official
County source designating
historic or archaeological resources.

LAST REVISION
2/14/95 ZONING
OTHER



----- INDICATES SPECIAL TREATMENT OVERLAY

REVISIONS		REVISIONS	
NO.	DATE	NO.	DATE



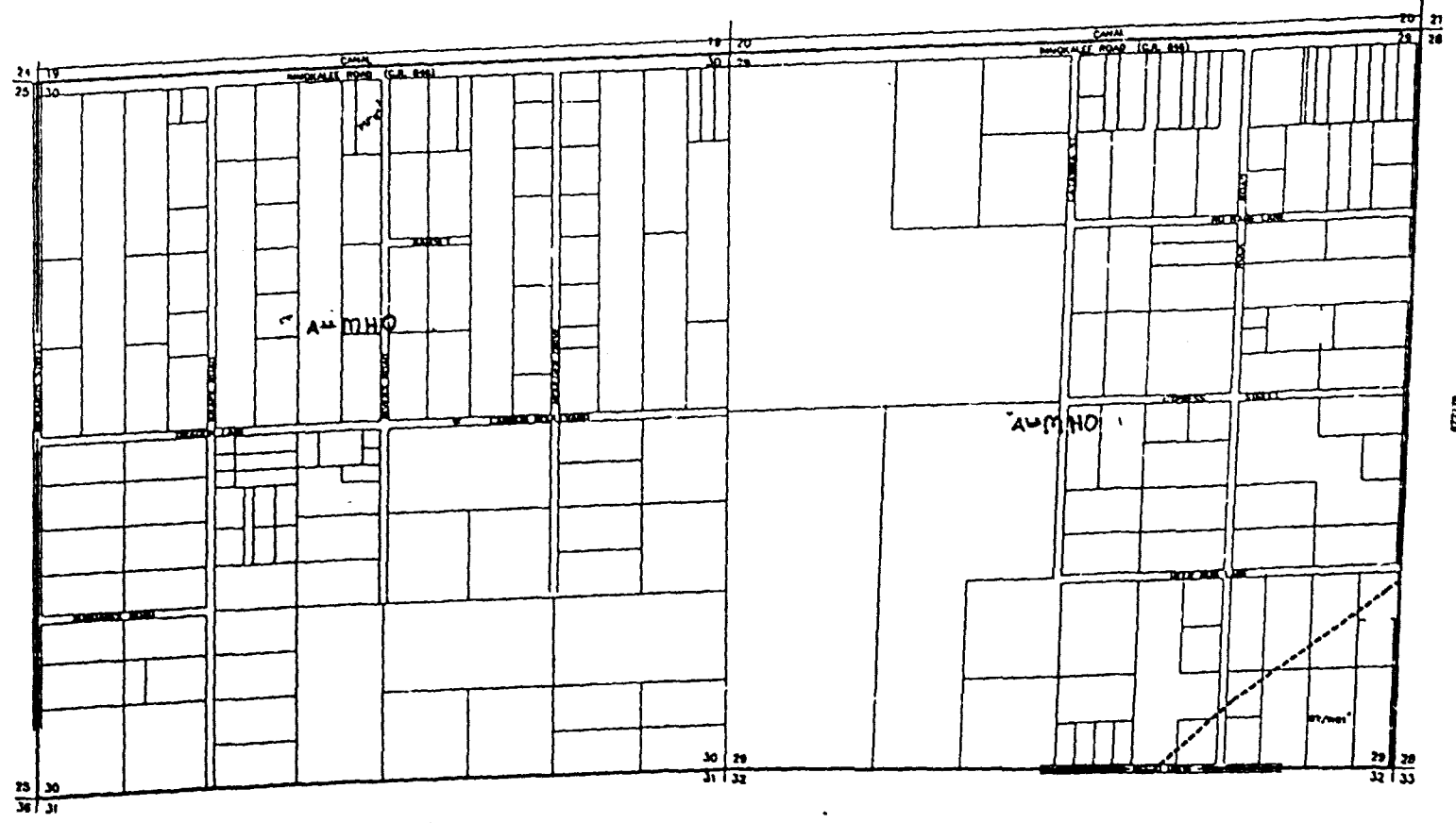
THIS IS TO CERTIFY THAT THIS IS A TRUE AND CORRECT COPY OF THE ORIGINAL RECORD AS FILED IN THE OFFICE OF THE COUNTY CLERK, COLLEGE PARK, FLORIDA, ON APRIL 14, 1995.

Steph J. [Signature]
CLERK

[Signature]
SEAL

FLOOD INSURANCE RATE MAP INFORMATION	
COMMUNITY DEVELOPMENT DEPARTMENT	PANEL NUMBER: 183 B
PROGRAM: REGULAR	EFFECTIVE DATE: JUNE 3, 1995
FLOOD ZONE: ALL	OR AS SHOWN ON MAP.
COLLER COUNTY, FLORIDA	
COMMUNITY DEVELOPMENT DEPARTMENT	
TWP 48S R9W 29E SEC(S) 27 NO 1/2	MAP NUMBER: 85276

872930



LAST REVISION
 ZONING
 9/16/83 OTHER

INDICATES SPECIAL TREATMENT OVERLAY

PARCEL IDENTIFICATION		PARCEL IDENTIFICATION	
PLAT	SECTION	PLAT	SECTION

872930

THIS IS TO CERTIFY THAT THIS IS A PAGE OF THE ORIGINAL PLAT AS APPROVED BY THE BOARD OF COUNTY COMMISSIONERS OF THE COUNTY OF COLLIER, FLORIDA, AND IS TRUE AND CORRECT.

Shirley Lamb
 Clerk

Thomas D. Brown
 Chairman

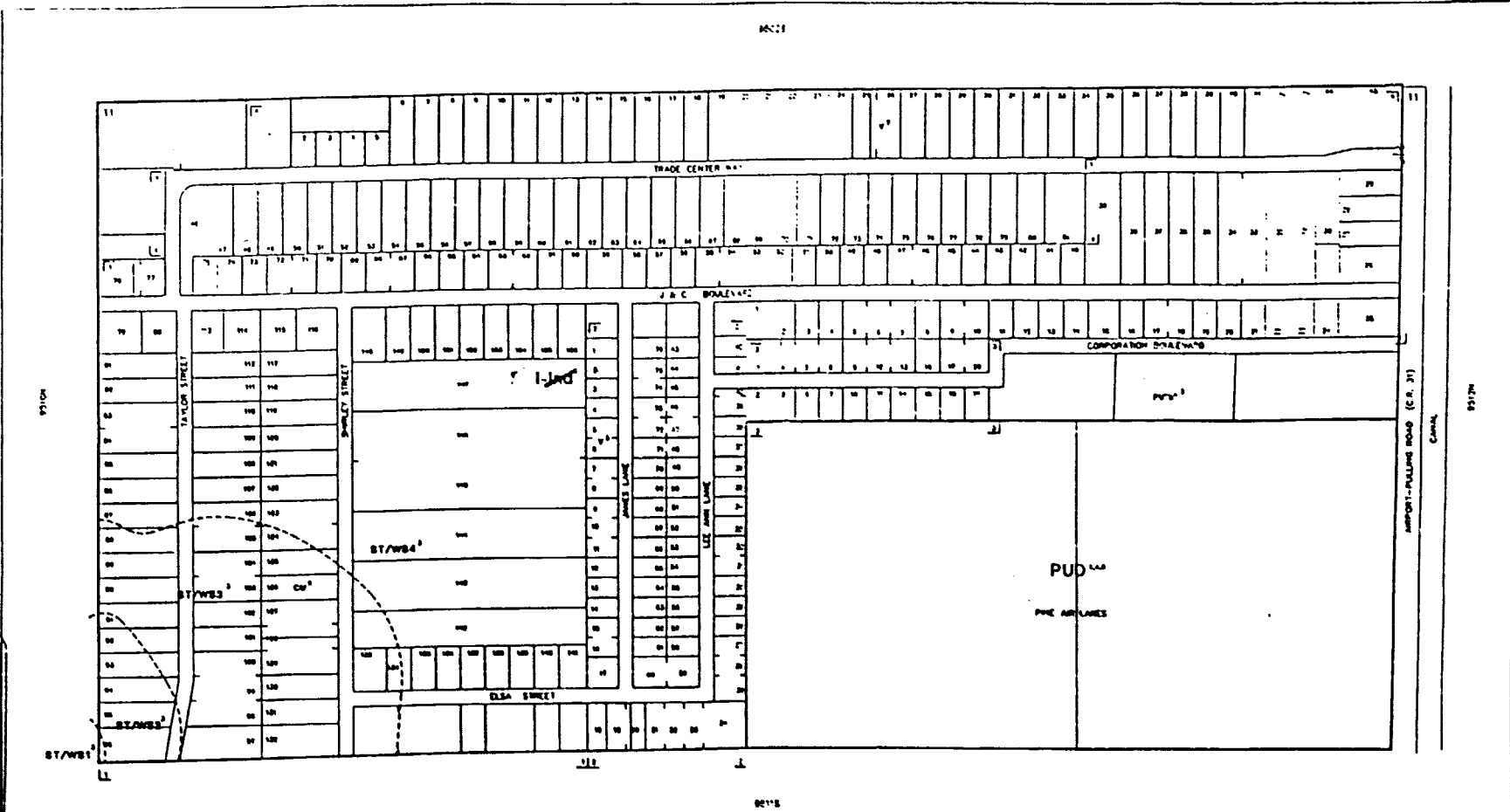
FLOOD INSURANCE RATE MAP INFORMATION

COMMUNITY NUMBER: 13827 PANEL NUMBER: 220 D
 PROGRAM: REGULAR TYPE: FIRM: 3, 1988
 ALSO SHOW ALL AS SHOWN ON MAP.

COLLIER COUNTY, FLORIDA
 COMMUNITY DEVELOPMENT DIVISION
 400 RING BAY STREET SECT 30 & 30
 MAP NUMBER: 872930

The Historic / Archeological
 Probability Maps are the result of
 County source designating
 historic or archeologic resources.

LAST REVISION
 5/1/94 ZONING
 OTHER



----- INDICATES SPECIAL TREATMENT OVERLAY

ZONING INDEX	
ST/WB1	ST/WB2
ST/WB3	ST/WB4
PUD	PNC AIRLINES

1 2 3 4 5 6 7 8 9 10 11 12 13 14 15 16 17 18 19 20 21 22 23 24 25 26 27 28 29 30 31 32 33 34 35 36 37 38 39 40 41 42 43 44 45 46 47 48 49 50 51 52 53 54 55 56 57 58 59 60 61 62 63 64 65 66 67 68 69 70 71 72 73 74 75 76 77 78 79 80 81 82 83 84 85 86 87 88 89 90 91 92 93 94 95 96 97 98 99 100	
--	--

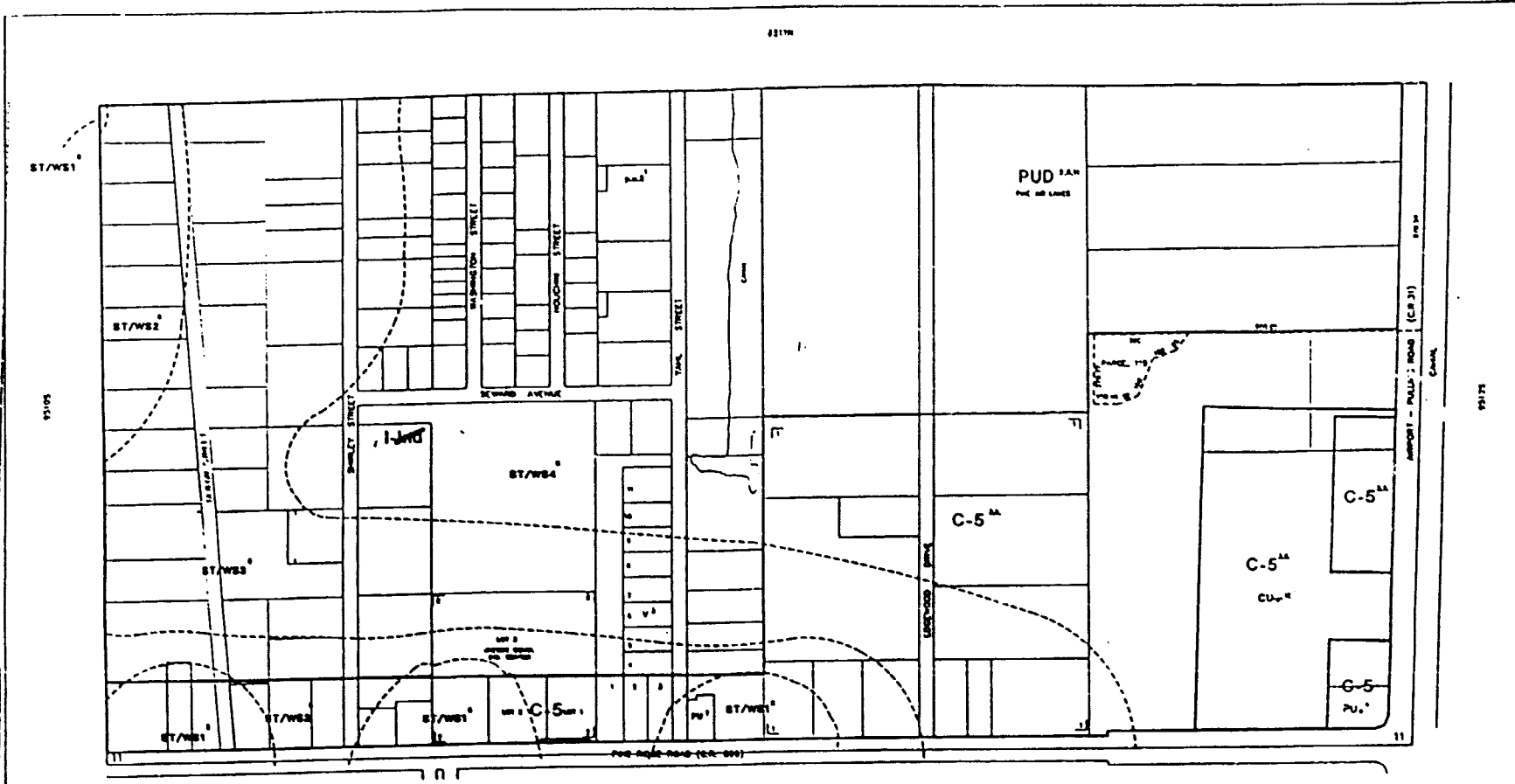
THIS IS TO CERTIFY THAT THIS IS A PAGE OF THE OFFICIAL ZONING MAP AS
 REPRODUCED TO AND APPROVED BY THE BOARD OF COUNTY COMMISSIONERS OF
 THE COUNTY OF COLLIER, FLORIDA, APPROVED OCTOBER 28, 1994.

James A. Castaneda
Marcus J. ...

ZONING INSURANCE RATE MAP INFORMATION	
COMPL. NUMBER: 13872	PANEL NUMBER: 2134282
PROGRAM: REGULAR	EFFECTIVE DATE: 10/28/94
FLORIDA ZONING: ALL ZONING AS SHOWN ON MAP.	
COLLIER COUNTY, FLORIDA	
COMMUNITY DEVELOPMENT DIVISION	
MAP 485 BNC 23C SEC(S) 11 NO 1/2	
DATE	MAP NUMBER
	9511N

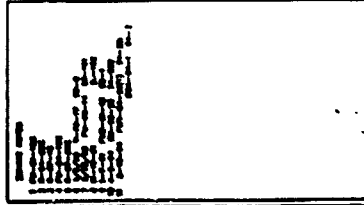
The Historic / Archaeological
Probability Maps are the official
County course designating
historic or archaeological resources.

LAST REVISION
6/17/84 ZONING
OTHER



--- INDICATES SPECIAL TREATMENT OVERLAY

SUBDIVISION INDEX			
BLK	LOT	BLK	LOT



THIS IS TO CERTIFY THAT THIS IS A PAGE OF THE OFFICIAL ZONING MAP
REFERRED TO AND ADAPTED THEREFROM BY ORDINANCE NO. 31-485 OF
THE COUNTY OF COLLIER, FLORIDA, ADOPTED OCTOBER 25, 1984.

James A. Castaneda
Maurice J. Taylor

FLOOD INSURANCE RATE MAP INFORMATION

COMMITTEE NUMBER: 128887 PANEL NUMBER: 5554/3050
 PROGRAM: REGULAR EFFECTIVE DATE: 11/1/84
 FLOOD ZONE: ALL ZONES AS SHOWN ON MAP.

COLLIER COUNTY, FLORIDA
 COUNTY DEVELOPMENT DIVISION
 TWP 48S RING 23E SEC 31 11 50 1/2
 SHEET MAP NUMBER:
 85115

R 27 E

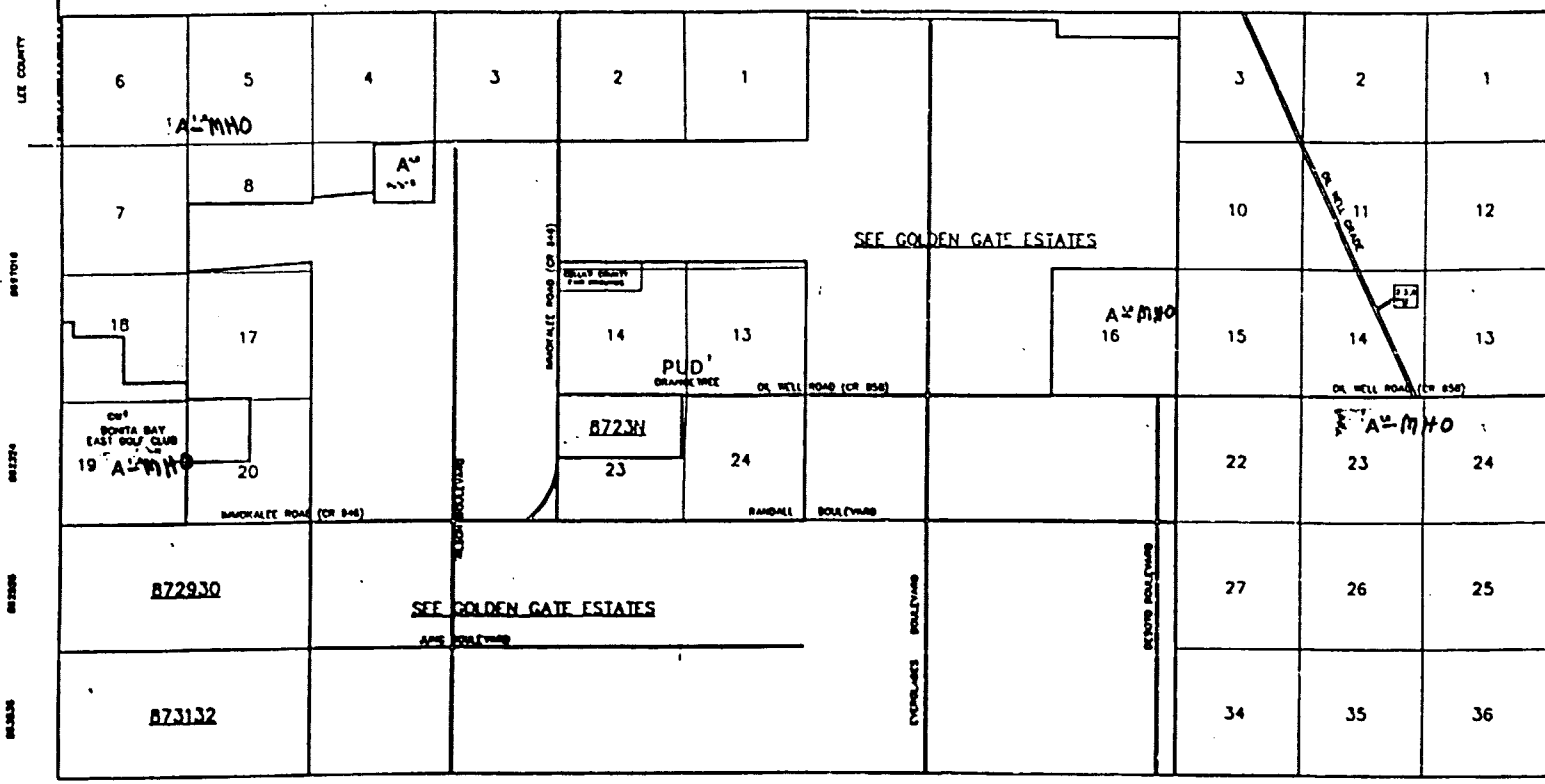
482728

R 28 E

The Historic / Archaeological
Probability Maps are the official
County source designating
historic or archaeological resources.

LAST REVISION
11/27/44 ZONING
OTHER

T 48 S



SCHEDULED SHEET	
NO.	DATE

482728

THIS IS TO CERTIFY THAT THIS IS A PAGE OF THE OFFICIAL ZONING MAP AS REFERRED TO AND ADOPTED BY RESOLUTION NO. 10-108 OF THE BOARD OF COUNTY COMMISSIONERS, FLORIDA, APPROVED 24, 1944.

James A. Cantelero
William J. Sanford

THIS IS TO CERTIFY THAT THIS IS A PAGE OF THE OFFICIAL ZONING MAP AS REFERRED TO AND ADOPTED BY RESOLUTION NO. 10-108 OF THE BOARD OF COUNTY COMMISSIONERS, FLORIDA, APPROVED 24, 1944.

James A. Cantelero
William J. Sanford

FLOOD INSURANCE RATE MAP INFORMATION	
COMMUNITY NUMBER/LEVEL	PANEL NUMBER 250 0
PROGRAM REGULAR	EFFECTIVE DATE: APR 3, 1970
FLOOD ZONE ALL B OR AS SHOWN ON MAP.	
COLLIER COUNTY, FLORIDA	
COMMUNITY DEVELOPMENT DIVISION	
TWP 48S R90 27E & 28E	
DATE	MAP NUMBER
	482728

STATE OF FLORIDA)
COUNTY OF COLLIER)

I, DWIGHT E. BROCK, Clerk of Courts in and for the Twentieth Judicial Circuit, Collier County, Florida, do hereby certify that the foregoing is a true copy of:

Ordinance No. 95-38

which was adopted by the Board of County Commissioners on the 23rd day of May, 1995, during Regular Session.

WITNESS my hand and the official seal of the Board of County Commissioners of Collier County, Florida, this 24th day of May, 1995.

DWIGHT E. BROCK
Clerk of Courts and Clerk
Ex-officio to Board of
County Commissioners

Maureen Kenyon
By: /s/Maureen Kenyon
Deputy Clerk

