

**ORDINANCE NO. 19- 15**

**AN ORDINANCE OF THE BOARD OF COUNTY COMMISSIONERS OF COLLIER COUNTY, FLORIDA, AMENDING ORDINANCE NO. 02-61, AS AMENDED, THE FIDDLER'S CREEK COMMUNITY DEVELOPMENT DISTRICT #2; AMENDING THE DISTRICT BY CONTRACTING THE EXTERNAL BOUNDARIES BY APPROXIMATELY 210.003 ACRES, LEAVING APPROXIMATELY 849.73; PROVIDING FOR CONFLICT AND SEVERABILITY; PROVIDING FOR INCLUSION IN THE CODE OF LAWS AND ORDINANCES; AND PROVIDING FOR AN EFFECTIVE DATE.**

**WHEREAS**, on November 19, 2002, the Board of County Commissioners (Board) adopted Ordinance No. 2002-61 establishing the Fiddler's Creek Community Development District #2 (District), as a community development district within the meaning of Chapter 190, Florida Statutes; and

**WHEREAS**, the original boundaries set forth in Ordinance 2002-61 established boundaries resulting in 998.79 acres; and

**WHEREAS**, these boundaries have been previously modified by Ordinance 2014-26 and Ordinance 17-16; and

**WHEREAS**, Taylor Morrison of Florida, Inc., a Florida for profit company, has petitioned the Board of County Commissioners (Board) of Collier County, Florida, a political subdivision of the State of Florida, to contract the boundaries of the District by approximately 210.003 acres, as authorized by Section 190.046 (1), Florida Statutes, decreasing the size of the District to approximately 849.73 acres; and

**WHEREAS**, the Board considered the Petition at a duly noticed public hearing; and

**WHEREAS**, upon consideration of the Petition, the Board determined the following:

1. The statements made within the Petition are true and correct.
2. Amending the Ordinance is not inconsistent with any applicable element or portion of the comprehensive plan.



3. The land within the District continues to be of sufficient size, to be sufficiently compact, and to be sufficiently contiguous to be developable as a functionally interrelated community.

4. The District continues to be the best alternative available for delivering community development services and facilities to the area serviced by the District.

5. The service and facilities of the District will continue to not be incompatible with the capacity and uses of any existing local and regional community development services and facilities.

6. The area to be serviced by the District remains amenable to separate special district governance; and

**WHEREAS**, the Board finds that Petitioner has otherwise satisfied all requirements set forth in Section 190.046, Florida Statutes.

**NOW, THEREFORE, BE IT ORDAINED BY THE BOARD OF COUNTY COMMISSIONERS OF COLLIER COUNTY, FLORIDA that:**

**SECTION ONE: AMENDMENT OF ORDINANCE NO. 02-61, AS AMENDED.**

The previous legal description of the District as depicted in Exhibit A, is hereby superseded and replaced by the legal description of the District described in Exhibit B, reflecting the areas added and the areas contracted from the District through this amendment.

**SECTION TWO: EXTERNAL BOUNDARIES OF THE DISTRICT.**

The external boundaries of the District encompass 849.73 acres of land, more or less, as described in Exhibit B.

**SECTION THREE: CONFLICT AND SEVERABILITY.**

In the event this Ordinance conflicts with any other ordinance of Collier County or other applicable law, the more restrictive shall apply. If any phrase or portion of this Ordinance is held invalid or unconstitutional by any court of competent jurisdiction, such portion shall be deemed a separate, distinct and independent provision and such holding shall not affect the validity of the remaining portion.

**SECTION FOUR: INCLUSION IN THE CODE OF LAWS AND ORDINANCES.**

The provisions of this Ordinance shall become and be made a part of the Code of Laws and Ordinances of Collier County, Florida. The sections of the Ordinances may be renumbered or relettered to accomplish such, and the word "ordinance" may be changed to "section," "article," or any other appropriate word.

**SECTION FIVE: EFFECTIVE DATE.**

This Ordinance shall become effective upon filing with the Florida Department of State.

PASSED AND DULY ADOPTED by the Board of County Commissioners of Collier County, Florida, this 25th day of June, 2019.

ATTEST:  
CRYSTAL K. KINZEL, Clerk

By: *Crystal Kinzel*  
Attest as to Chairman's Clerk signature only.

BOARD OF COUNTY COMMISSIONERS  
COLLIER COUNTY, FLORIDA

By: *William L. McDaniel, Jr.*  
William L. McDaniel, Jr., Chairman

Approved as to form and legality:

*Jeffrey A. Klatzkow*, County Attorney

This ordinance filed with the Secretary of State's Office the 27th day of June, 2019 and acknowledgement of that filing received this 27th day of June, 2019.

By: *Crystal Kinzel*  
Deputy Clerk




# EXHIBIT A

## LEGAL DESCRIPTION:

A PARCEL OF LAND LOCATED IN SECTIONS 11, 13 AND 14, TOWNSHIP 51 SOUTH, RANGE 26 EAST, AND SECTION 18, TOWNSHIP 51 SOUTH, RANGE 27 EAST, COLLIER COUNTY, FLORIDA AND BEING MORE PARTICULARLY DESCRIBED AS FOLLOWS:

BEGIN AT THE NORTHWEST CORNER OF SECTION 13, TOWNSHIP 51 SOUTH, RANGE 26 EAST, COLLIER COUNTY, FLORIDA; THENCE ALONG THE NORTH LINE OF SAID SECTION 13, RUN S89°55'46"E FOR A DISTANCE OF 4688.27 FEET, TO A POINT ON THE SOUTHERLY RIGHT-OF-WAY LINE OF U.S. 41 (TAMAMI TRAIL), A 200' WIDE RIGHT-OF-WAY; THENCE ALONG SAID SOUTHERLY RIGHT-OF-WAY LINE, RUN S54°21'29"E FOR A DISTANCE OF 3793.58 FEET; THENCE LEAVING SAID SOUTHERLY RIGHT-OF-WAY LINE, RUN S35°39'17"W FOR A DISTANCE OF 107.40 FEET, TO A POINT OF NON-TANGENTIAL CIRCULAR CURVATURE; THENCE ALONG A CURVE TO THE RIGHT, HAVING A RADIUS OF 350.00 FEET, THROUGH A CENTRAL ANGLE OF 65°22'03", AND BEING SUBTENDED BY A CHORD OF 383.13 FEET, AT A BEARING OF S12°43'35"E, FOR AN ARC LENGTH OF 405.42 FEET, TO A POINT OF TANGENTIAL REVERSE CURVATURE; THENCE ALONG A CURVE TO THE LEFT, HAVING A RADIUS OF 150.00 FEET, THROUGH A CENTRAL ANGLE OF 110°27'50", AND BEING SUBTENDED BY A CHORD OF 246.44 FEET, AT A BEARING OF S34°46'28"E, FOR AN ARC LENGTH OF 289.19 FEET; THENCE RUN N89°59'37"E FOR A DISTANCE OF 58.44 FEET, TO A POINT OF TANGENTIAL CIRCULAR CURVATURE; THENCE ALONG A CURVE TO THE LEFT, HAVING A RADIUS OF 20.00 FEET, THROUGH A CENTRAL ANGLE OF 52°30'17", AND BEING SUBTENDED BY A CHORD OF 17.69 FEET, AT A BEARING OF N63°44'28"E, FOR AN ARC LENGTH OF 18.33 FEET, TO A POINT OF TANGENTIAL REVERSE CURVATURE; THENCE ALONG A CURVE TO THE RIGHT, HAVING A RADIUS OF 95.00 FEET, THROUGH A CENTRAL ANGLE OF 15°00'34", AND BEING SUBTENDED BY A CHORD OF 24.82 FEET, AT A BEARING OF N44°58'37"E, FOR AN ARC LENGTH OF 24.89 FEET, TO A POINT OF TANGENTIAL REVERSE CURVATURE; THENCE ALONG A CURVE TO THE LEFT, HAVING A RADIUS OF 20.00 FEET, THROUGH A CENTRAL ANGLE OF 52°30'17", AND BEING SUBTENDED BY A CHORD OF 17.69 FEET, AT A BEARING OF N26°14'45"E, FOR AN ARC LENGTH OF 18.33 FEET; THENCE RUN N89°59'37"E FOR A DISTANCE OF 100.00 FEET, TO A POINT OF NON-TANGENTIAL CIRCULAR CURVATURE; THENCE ALONG A CURVE TO THE LEFT, HAVING A RADIUS OF 20.00 FEET, THROUGH A CENTRAL ANGLE OF 52°30'17", AND BEING SUBTENDED BY A CHORD OF 17.69 FEET, AT A BEARING OF S26°15'32"E, FOR AN ARC LENGTH OF 18.33 FEET, TO A POINT OF TANGENTIAL REVERSE CURVATURE; THENCE ALONG A CURVE TO THE RIGHT, HAVING A RADIUS OF 95.00 FEET, THROUGH A CENTRAL ANGLE OF 15°00'34", AND BEING SUBTENDED BY A CHORD OF 24.82 FEET, AT A BEARING OF S45°00'23"E, FOR AN ARC LENGTH OF 24.89 FEET, TO A POINT OF TANGENTIAL REVERSE CURVATURE; THENCE ALONG A CURVE TO THE LEFT, HAVING A RADIUS OF 20.00 FEET, THROUGH A CENTRAL ANGLE OF 52°30'11", AND BEING SUBTENDED BY A CHORD OF 17.69 FEET, AT A BEARING OF S63°45'11"E, FOR AN ARC LENGTH OF 18.33 FEET; THENCE RUN S00°00'23"E FOR A DISTANCE OF 130.00 FEET; THENCE RUN N89°59'37"E FOR A DISTANCE OF 113.79 FEET; THENCE RUN S00°00'23"E FOR A DISTANCE OF 150.36 FEET, TO A POINT OF TANGENTIAL CIRCULAR CURVATURE; THENCE ALONG A CURVE TO THE RIGHT, HAVING A RADIUS OF 320.00 FEET, THROUGH A CENTRAL ANGLE OF 29°39'13", AND BEING SUBTENDED BY A CHORD OF 163.77 FEET, AT A BEARING OF S14°49'13"W, FOR AN ARC LENGTH OF 165.82 FEET, TO A POINT OF TANGENTIAL COMPOUND CURVATURE; THENCE ALONG A CURVE TO THE RIGHT, HAVING A RADIUS OF 1190.00 FEET, THROUGH A CENTRAL ANGLE OF 18°36'36", AND BEING SUBTENDED BY A CHORD OF 384.82 FEET, AT A BEARING OF S38°57'08"W, FOR AN ARC LENGTH OF 386.52 FEET, TO A POINT OF NON-TANGENTIAL COMPOUND CURVATURE; THENCE ALONG A CURVE TO THE RIGHT, HAVING A RADIUS OF 45.00 FEET, THROUGH A CENTRAL ANGLE OF 59°39'38", AND BEING SUBTENDED BY A CHORD OF 44.77 FEET, AT A BEARING OF S44°45'59"E, FOR AN ARC LENGTH OF 46.86 FEET, TO A POINT OF REVERSE CURVATURE; THENCE ALONG A CURVE TO THE LEFT, HAVING A RADIUS OF 62.58 FEET, THROUGH A CENTRAL ANGLE OF 18°38'25", AND BEING SUBTENDED BY A CHORD OF 20.27 FEET, AT A BEARING OF S24°15'23"E, FOR AN ARC LENGTH OF 20.36 FEET, TO A POINT OF REVERSE CURVATURE; THENCE ALONG A CURVE TO THE RIGHT, HAVING A RADIUS OF 45.00 FEET, THROUGH A CENTRAL ANGLE OF 61°46'37", AND BEING SUBTENDED BY A CHORD OF 46.20 FEET, AT A BEARING OF S02°41'17"E, FOR AN ARC LENGTH OF 48.52 FEET; THENCE RUN S28°12'02"W FOR A DISTANCE OF 70.46 FEET, TO A POINT OF TANGENTIAL CIRCULAR CURVATURE; THENCE ALONG A CURVE TO THE LEFT, HAVING A RADIUS OF 300.00 FEET, THROUGH A CENTRAL ANGLE OF 26°33'16", AND BEING SUBTENDED BY A CHORD OF 137.80 FEET, AT A BEARING OF S14°55'24"W, FOR AN ARC LENGTH OF 138.04 FEET, TO A POINT OF TANGENTIAL REVERSE CURVATURE; THENCE ALONG A CURVE TO THE RIGHT, HAVING A RADIUS OF 300.00 FEET, THROUGH A CENTRAL ANGLE OF 74°19'47", AND BEING SUBTENDED BY A CHORD OF 362.47 FEET, AT A BEARING OF S38°48'40"W, FOR AN ARC LENGTH OF 389.19 FEET, TO A POINT OF TANGENTIAL REVERSE CURVATURE; THENCE ALONG A CURVE TO THE LEFT, HAVING A RADIUS OF 300.00 FEET, THROUGH A CENTRAL ANGLE OF 85°58'55", AND BEING SUBTENDED BY A CHORD OF 409.13 FEET, AT A BEARING OF S32°59'06"W, FOR AN ARC LENGTH OF 450.20 FEET, TO A POINT OF TANGENTIAL REVERSE CURVATURE; THENCE ALONG A CURVE TO THE RIGHT, HAVING A RADIUS OF 45.00 FEET, THROUGH A CENTRAL ANGLE OF 111°49'56", AND BEING SUBTENDED BY A CHORD OF 74.54 FEET, AT A BEARING OF S45°54'37"W, FOR AN ARC LENGTH OF 87.83 FEET; THENCE RUN N78°10'25"W FOR A DISTANCE OF 194.68 FEET, TO A POINT OF TANGENTIAL CIRCULAR CURVATURE; THENCE ALONG A CURVE TO THE RIGHT, HAVING A RADIUS OF 45.00 FEET, THROUGH A CENTRAL ANGLE OF 116°41'28", AND BEING SUBTENDED BY A CHORD OF 76.61 FEET, AT A BEARING OF N19°49'41"W, FOR AN ARC LENGTH OF 91.65 FEET; THENCE RUN N38°31'03"E FOR A DISTANCE OF 111.08 FEET; THENCE RUN N51°28'57"W FOR A DISTANCE OF 105.27 FEET, TO A POINT OF NON-TANGENTIAL CIRCULAR CURVATURE; THENCE ALONG A CURVE TO THE RIGHT, HAVING A RADIUS OF 365.00 FEET, THROUGH A CENTRAL ANGLE OF 75°57'07", AND BEING SUBTENDED BY A CHORD OF 449.19 FEET, AT A BEARING OF S78°42'20"W, FOR AN ARC LENGTH OF 483.85 FEET, TO A POINT OF NON-TANGENTIAL COMPOUND CURVATURE; THENCE ALONG A CURVE TO THE RIGHT, HAVING A RADIUS OF 45.00 FEET, THROUGH A CENTRAL ANGLE OF 107°40'34", AND BEING SUBTENDED BY A CHORD OF 72.66 FEET, AT A BEARING OF S16°58'44"W, FOR AN ARC LENGTH OF 84.57 FEET, TO A POINT OF NON-TANGENTIAL COMPOUND CURVATURE; THENCE ALONG A CURVE TO THE LEFT, HAVING A RADIUS OF 260.00 FEET, THROUGH A CENTRAL ANGLE OF 74°43'05", AND BEING SUBTENDED BY A CHORD OF 315.54 FEET, AT A BEARING OF S33°46'55"W, FOR AN ARC LENGTH OF 339.06 FEET; THENCE RUN S03°34'37"E FOR A DISTANCE OF 87.88 FEET, TO A POINT OF TANGENTIAL CIRCULAR CURVATURE; THENCE ALONG A CURVE TO THE RIGHT, HAVING A RADIUS OF 225.00 FEET, THROUGH A CENTRAL ANGLE OF 94°37'47", AND BEING SUBTENDED BY A CHORD OF 330.79 FEET, AT A BEARING OF S43°44'16"W, FOR AN ARC LENGTH OF 371.61 FEET; THENCE RUN N88°56'50"W FOR A DISTANCE OF 322.37 FEET, TO A POINT OF TANGENTIAL CIRCULAR CURVATURE; THENCE ALONG A CURVE TO THE RIGHT, HAVING A RADIUS OF 285.00 FEET, THROUGH A CENTRAL ANGLE OF 18°35'10", AND BEING SUBTENDED BY A CHORD OF 92.05 FEET, AT A BEARING OF N79°39'15"W, FOR AN ARC LENGTH OF 92.45 FEET; THENCE RUN N88°56'39"W FOR A DISTANCE OF 664.33 FEET, TO A POINT OF TANGENTIAL CIRCULAR CURVATURE; THENCE ALONG A CURVE TO THE LEFT, HAVING A RADIUS OF 80.00 FEET, THROUGH A CENTRAL ANGLE OF 42°52'13", AND BEING SUBTENDED BY A CHORD OF 58.47 FEET, AT A BEARING OF S69°37'15"W, FOR AN ARC LENGTH OF 59.86 FEET, TO A POINT OF COMPOUND CURVATURE; THENCE ALONG A CURVE TO THE LEFT, HAVING A RADIUS OF 81.20 FEET, THROUGH A CENTRAL ANGLE OF 94°11'25", AND BEING SUBTENDED BY A CHORD OF 118.96 FEET, AT A BEARING OF N84°43'04"W, FOR AN ARC LENGTH OF 133.49 FEET;

|   |                 |
|---|-----------------|
| DRAWN BY:<br>R.A.K.                           | DATE:<br>8/7/18 |
| SHEET<br>1                                    | OF SHEET<br>5   |
| SEC-TWP-RGE-<br>11,13,14-51S-26E & 18-51S-27E |                 |


 950 Encore Way  
 Naples, FL 34110  
 Phone: (239) 254-2000  
 HOLE MONT  
 ENGINEERS PLANNERS & ARCHITECTS

**EXHIBIT 3**  
**LEGAL DESCRIPTION**  
**COMMUNITY DEVELOPMENT DISTRICT 2**

|                                 |
|---------------------------------|
| DRAWING NO.<br>B-7356-2         |
| PROJECT NO.<br>1998070          |
| FILE NAME<br>C002_SXD_Ren02.dwg |

Exhibit "3"



(CONTINUED FROM SHEET 1 OF 5)

THENCE RUN S04°47'07"W FOR A DISTANCE OF 126.86 FEET; THENCE RUN N77°46'12"W FOR A DISTANCE OF 78.84 FEET; THENCE RUN N88°51'53"W FOR A DISTANCE OF 65.94 FEET; THENCE RUN N84°45'39"W FOR A DISTANCE OF 685.72 FEET; THENCE RUN S05°42'49"W FOR A DISTANCE OF 66.04 FEET; THENCE RUN N84°17'11"W FOR A DISTANCE OF 48.52 FEET; THENCE RUN S28°00'46"W FOR A DISTANCE OF 219.00 FEET; THENCE RUN N61°59'14"W FOR A DISTANCE OF 667.71 FEET, TO A POINT OF TANGENTIAL CIRCULAR CURVATURE; THENCE ALONG A CURVE TO THE LEFT, HAVING A RADIUS OF 200.00 FEET, THROUGH A CENTRAL ANGLE OF 23°47'41", AND BEING SUBTENDED BY A CHORD OF 82.46 FEET, AT A BEARING OF N73°53'04"W, FOR AN ARC LENGTH OF 83.06 FEET, TO A POINT OF TANGENTIAL REVERSE CURVATURE; THENCE ALONG A CURVE TO THE RIGHT, HAVING A RADIUS OF 300.00 FEET, THROUGH A CENTRAL ANGLE OF 16°27'34", AND BEING SUBTENDED BY A CHORD OF 85.89 FEET, AT A BEARING OF N77°33'08"W, FOR AN ARC LENGTH OF 86.18 FEET, TO A POINT OF TANGENTIAL COMPOUND CURVATURE; THENCE ALONG A CURVE TO THE RIGHT, HAVING A RADIUS OF 150.00 FEET, THROUGH A CENTRAL ANGLE OF 61°29'33", AND BEING SUBTENDED BY A CHORD OF 153.37 FEET, AT A BEARING OF N38°34'34"W, FOR AN ARC LENGTH OF 160.99 FEET, TO A POINT OF TANGENTIAL REVERSE CURVATURE; THENCE ALONG A CURVE TO THE LEFT, HAVING A RADIUS OF 137.00 FEET, THROUGH A CENTRAL ANGLE OF 112°55'12", AND BEING SUBTENDED BY A CHORD OF 228.38 FEET, AT A BEARING OF N64°17'24"W, FOR AN ARC LENGTH OF 270.00 FEET; THENCE RUN S58°15'00"W FOR A DISTANCE OF 59.92 FEET, TO A POINT OF TANGENTIAL CIRCULAR CURVATURE; THENCE ALONG A CURVE TO THE RIGHT, HAVING A RADIUS OF 135.00 FEET, THROUGH A CENTRAL ANGLE OF 71°28'36", AND BEING SUBTENDED BY A CHORD OF 157.70 FEET, AT A BEARING OF N85°00'42"W, FOR AN ARC LENGTH OF 168.41 FEET, TO A POINT OF TANGENTIAL REVERSE CURVATURE; THENCE ALONG A CURVE TO THE LEFT, HAVING A RADIUS OF 250.00 FEET, THROUGH A CENTRAL ANGLE OF 38°03'09", AND BEING SUBTENDED BY A CHORD OF 163.00 FEET, AT A BEARING OF N68°17'59"W, FOR AN ARC LENGTH OF 166.04 FEET; THENCE RUN N87°19'33"W FOR A DISTANCE OF 86.72 FEET, TO A POINT OF TANGENTIAL CIRCULAR CURVATURE; THENCE ALONG A CURVE TO THE RIGHT, HAVING A RADIUS OF 10.00 FEET, THROUGH A CENTRAL ANGLE OF 80°16'50", AND BEING SUBTENDED BY A CHORD OF 12.89 FEET, AT A BEARING OF N47°11'08"W, FOR AN ARC LENGTH OF 14.01 FEET; THENCE RUN N07°02'43"W FOR A DISTANCE OF 40.73 FEET, TO A POINT OF TANGENTIAL CIRCULAR CURVATURE; THENCE ALONG A CURVE TO THE LEFT, HAVING A RADIUS OF 100.00 FEET, THROUGH A CENTRAL ANGLE OF 54°47'04", AND BEING SUBTENDED BY A CHORD OF 92.02 FEET, AT A BEARING OF N34°26'15"W, FOR AN ARC LENGTH OF 95.62 FEET, TO A POINT OF TANGENTIAL COMPOUND CURVATURE; THENCE ALONG A CURVE TO THE LEFT, HAVING A RADIUS OF 550.00 FEET, THROUGH A CENTRAL ANGLE OF 13°06'41", AND BEING SUBTENDED BY A CHORD OF 125.58 FEET, AT A BEARING OF N68°23'07"W, FOR AN ARC LENGTH OF 125.86 FEET, TO A POINT OF TANGENTIAL REVERSE CURVATURE; THENCE ALONG A CURVE TO THE RIGHT, HAVING A RADIUS OF 500.00 FEET, THROUGH A CENTRAL ANGLE OF 46°56'36", AND BEING SUBTENDED BY A CHORD OF 398.30 FEET, AT A BEARING OF N51°28'09"W, FOR AN ARC LENGTH OF 409.66 FEET; THENCE RUN N27°56'51"W FOR A DISTANCE OF 47.48 FEET, TO A POINT OF TANGENTIAL CIRCULAR CURVATURE; THENCE ALONG A CURVE TO THE LEFT, HAVING A RADIUS OF 260.00 FEET, THROUGH A CENTRAL ANGLE OF 60°36'37", AND BEING SUBTENDED BY A CHORD OF 262.39 FEET, AT A BEARING OF N58°18'09"W, FOR AN ARC LENGTH OF 275.04 FEET; THENCE RUN N88°36'28"W FOR A DISTANCE OF 125.93 FEET, TO A POINT OF TANGENTIAL CIRCULAR CURVATURE; THENCE ALONG A CURVE TO THE LEFT, HAVING A RADIUS OF 100.00 FEET, THROUGH A CENTRAL ANGLE OF 69°20'20", AND BEING SUBTENDED BY A CHORD OF 113.77 FEET, AT A BEARING OF S56°43'22"W, FOR AN ARC LENGTH OF 121.02 FEET, TO A POINT OF TANGENTIAL REVERSE CURVATURE; THENCE ALONG A CURVE TO THE RIGHT, HAVING A RADIUS OF 200.00 FEET, THROUGH A CENTRAL ANGLE OF 48°41'47", AND BEING SUBTENDED BY A CHORD OF 164.91 FEET, AT A BEARING OF S46°24'06"W, FOR AN ARC LENGTH OF 169.98 FEET, TO A POINT OF TANGENTIAL COMPOUND CURVATURE; THENCE ALONG A CURVE TO THE RIGHT, HAVING A RADIUS OF 700.00 FEET, THROUGH A CENTRAL ANGLE OF 13°28'58", AND BEING SUBTENDED BY A CHORD OF 164.34 FEET, AT A BEARING OF S77°29'29"W, FOR AN ARC LENGTH OF 164.72 FEET; THENCE RUN S84°13'58"W FOR A DISTANCE OF 169.90 FEET, TO A POINT OF TANGENTIAL CIRCULAR CURVATURE; THENCE ALONG A CURVE TO THE LEFT, HAVING A RADIUS OF 250.00 FEET, THROUGH A CENTRAL ANGLE OF 34°43'19", AND BEING SUBTENDED BY A CHORD OF 149.20 FEET, AT A BEARING OF S66°52'18"W, FOR AN ARC LENGTH OF 151.50 FEET, TO A POINT OF TANGENTIAL REVERSE CURVATURE; THENCE ALONG A CURVE TO THE RIGHT, HAVING A RADIUS OF 475.00 FEET, THROUGH A CENTRAL ANGLE OF 62°08'00", AND BEING SUBTENDED BY A CHORD OF 490.23 FEET, AT A BEARING OF S80°34'39"W, FOR AN ARC LENGTH OF 515.11 FEET, TO A POINT OF TANGENTIAL REVERSE CURVATURE; THENCE ALONG A CURVE TO THE LEFT, HAVING A RADIUS OF 200.00 FEET, THROUGH A CENTRAL ANGLE OF 65°24'33", AND BEING SUBTENDED BY A CHORD OF 216.12 FEET, AT A BEARING OF S78°56'22"W, FOR AN ARC LENGTH OF 228.32 FEET, TO A POINT OF TANGENTIAL REVERSE CURVATURE; THENCE ALONG A CURVE TO THE RIGHT, HAVING A RADIUS OF 150.00 FEET, THROUGH A CENTRAL ANGLE OF 43°19'39", AND BEING SUBTENDED BY A CHORD OF 110.75 FEET, AT A BEARING OF S67°53'55"W, FOR AN ARC LENGTH OF 113.43 FEET; THENCE RUN S89°33'44"W FOR A DISTANCE OF 33.81 FEET; THENCE RUN N00°25'58"W FOR A DISTANCE OF 2674.12 FEET; THENCE RUN N26°57'22"W FOR A DISTANCE OF 100.00 FEET, TO A POINT OF NON-TANGENTIAL CIRCULAR CURVATURE; THENCE ALONG A CURVE TO THE RIGHT, HAVING A RADIUS OF 709.89 FEET, THROUGH A CENTRAL ANGLE OF 15°24'01", AND BEING SUBTENDED BY A CHORD OF 190.23 FEET, AT A BEARING OF S70°44'39"W, FOR AN ARC LENGTH OF 190.81 FEET, TO A POINT ON THE EAST LINE OF THE NORTHEAST QUARTER OF SECTION 14, TOWNSHIP 51 SOUTH, RANGE 26 EAST; THENCE ALONG SAID EAST LINE OF THE NORTHEAST QUARTER OF SECTION 14, RUN N00°25'37"W FOR A DISTANCE OF 495.65 FEET, TO THE SOUTHEAST CORNER OF THE NORTHEAST QUARTER OF THE NORTHEAST QUARTER OF SAID SECTION 14; THENCE ALONG THE SOUTH LINE OF THE NORTHEAST QUARTER OF THE NORTHEAST QUARTER OF SAID SECTION 14, RUN N88°20'43"W FOR A DISTANCE OF 693.91 FEET, TO THE SOUTHWEST CORNER OF THE EAST HALF OF THE NORTHEAST QUARTER OF THE NORTHEAST QUARTER OF SAID SECTION 14; THENCE LEAVING SAID SECTION LINE, RUN N52°51'27"W FOR A DISTANCE OF 171.83 FEET; THENCE RUN S37°08'33"W FOR A DISTANCE OF 122.51 FEET, TO A POINT ON THE SOUTH LINE OF THE NORTH QUARTER OF SAID SECTION 14; THENCE ALONG SAID SOUTH LINE OF THE NORTH QUARTER OF SAID SECTION 14, RUN N88°20'43"W FOR A DISTANCE OF 2557.48 FEET; THENCE ALONG THE WEST LINE OF THE EAST HALF OF THE NORTHEAST QUARTER OF THE NORTH-WEST QUARTER OF SAID SECTION 14, RUN N00°02'07"E FOR A DISTANCE OF 1389.87 FEET; THENCE LEAVING SAID QUARTER LINE, RUN N83°05'43"W FOR A DISTANCE OF 590.35 FEET; THENCE RUN N01°43'02"E FOR A DISTANCE OF 1493.79 FEET; THENCE RUN S88°09'55"E FOR A DISTANCE OF 1274.00 FEET; THENCE RUN S88°09'46"E FOR A DISTANCE OF 1374.52 FEET; THENCE ALONG THE WEST LINE OF THE EAST HALF OF THE SOUTHEAST QUARTER OF SECTION 11 AND THE WEST LINE OF THE SOUTHEAST QUARTER OF THE NORTHEAST QUARTER OF SAID SECTION 11, TOWNSHIP 51 SOUTH, RANGE 26 EAST, RUN N01°13'54"E FOR A DISTANCE OF 1860.10 FEET; THENCE LEAVING SAID QUARTER LINE, RUN S88°46'12"E FOR A DISTANCE OF 518.33 FEET, TO A POINT OF NON-TANGENTIAL CIRCULAR CURVATURE; THENCE ALONG A CURVE TO THE RIGHT, HAVING A RADIUS OF 350.00 FEET, THROUGH A CENTRAL ANGLE OF 37°05'11", AND BEING SUBTENDED BY A CHORD OF 222.61 FEET, AT A BEARING OF N17°05'16"E, FOR AN ARC LENGTH OF 226.55 FEET; THENCE RUN N35°37'51"E FOR A DISTANCE OF 214.87 FEET, TO A POINT ON SAID SOUTHERLY RIGHT-OF-WAY LINE OF U.S. 41;

|   |                 |
|---|-----------------|
| DRAWN BY:<br>R.A.K.                           | DATE:<br>8/7/18 |
| SHEET #<br>2                                  | OF SHEET<br>3   |
| SEC-TWN-RGE:<br>11,13,14-51S-26E & 18-51S-27E |                 |



950 Encore Way  
Naples, FL 34110  
Phone: (239) 254-2000  
Florida Certificate of  
Authorization No. 1772

LEGAL DESCRIPTION  
COMMUNITY DEVELOPMENT DISTRICT 2

|                                 |
|---------------------------------|
| DRAWING NO.<br>B-7366-2         |
| PROJECT NO.<br>1898070          |
| FILE NAME<br>CDD2 STD_Rev02.dwg |

CAO

(CONTINUED FROM SHEET 2 OF 5)

THENCE ALONG SAID SOUTHERLY RIGHT-OF-WAY LINE, RUN S54°21'53"E FOR A DISTANCE OF 807.97 FEET, TO AN INTERSECTION WITH THE EAST LINE OF THE NORTHEAST QUARTER OF SAID SECTION 11; THENCE ALONG SAID QUARTER LINE, RUN S01°00'06"W FOR A DISTANCE OF 3308.61 FEET, TO THE POINT OF BEGINNING OF THE PARCEL HEREIN DESCRIBED; CONTAINING 1,070.640 ACRES.

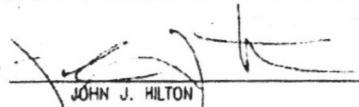
**LESS AND EXCEPT:**


A PARCEL OF LAND LOCATED IN A PORTION OF SECTION 14, TOWNSHIP 51 SOUTH, RANGE 26 EAST, COLLIER COUNTY, FLORIDA, BEING MORE PARTICULARLY DESCRIBED AS FOLLOWS:

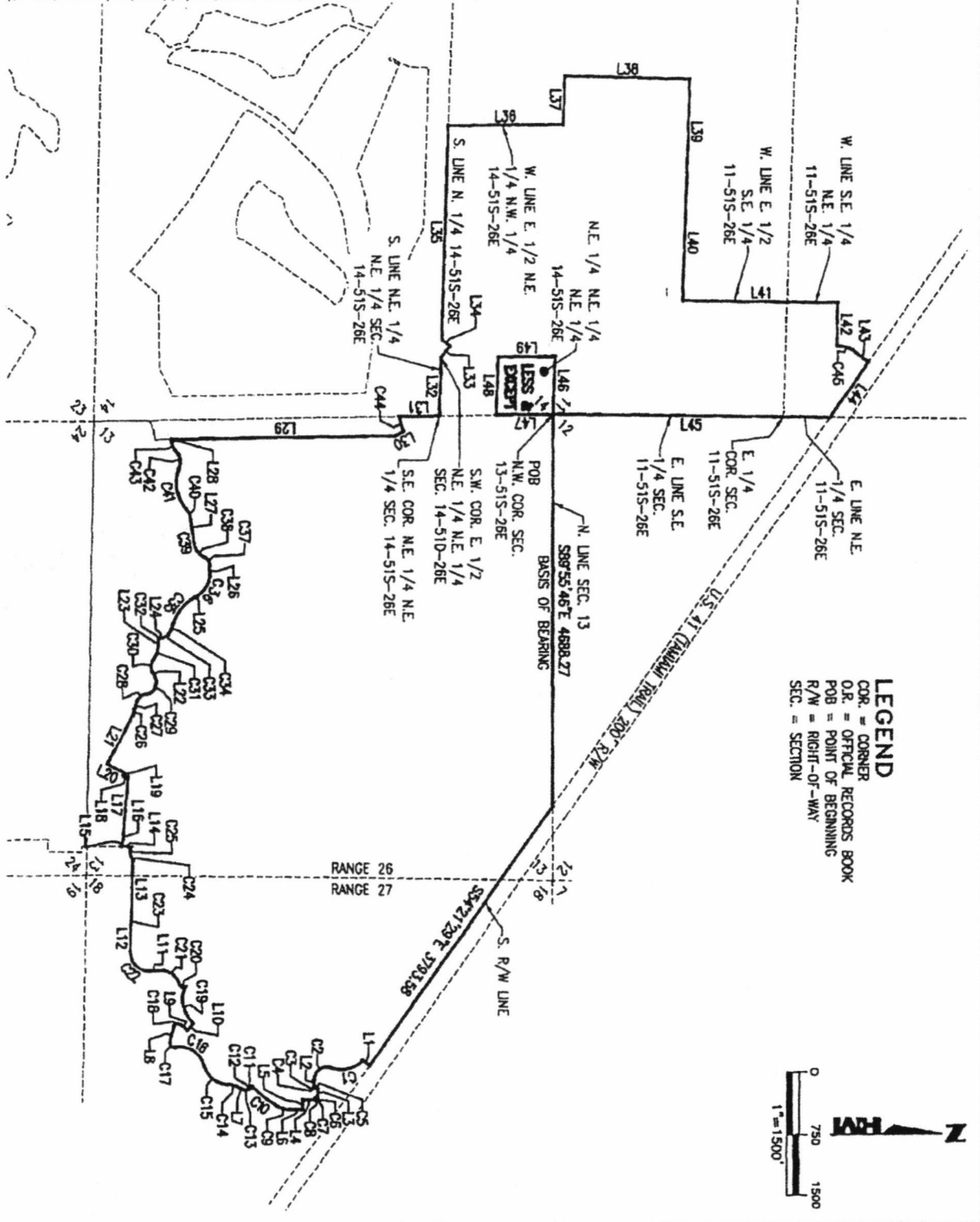
THE NORTHEAST 1/4 OF THE NORTHEAST 1/4 OF THE NORTHEAST 1/4 OF SECTION 14, TOWNSHIP 51 SOUTH, RANGE 26 EAST, COLLIER COUNTY, FLORIDA, CONTAINING 10.906 ACRES, MORE OR LESS.

TOTAL DESCRIBED AREA = 1,059.734 ACRES.

HOLE MONTES, INC.  
 CERTIFICATE OF AUTHORIZATION NUMBER LB 1772


BY  P.S.M. #6278  
 JOHN J. HILTON STATE OF FLORIDA

|  |                                  |   |  |   |  |
|--|----------------------------------|---|--|---|--|
| DRAWN BY:<br>R.A.K.<br>SHEET<br>3<br>SEC-TWN-RGE:<br>11,13,14-51S-28E & 18-51S-27E | DATE:<br>9/7/16<br>OF SHEET<br>5 | <br><b>HOLE MONTES</b><br>ENGINEERS PLANNERS SURVEYORS | 950 Encore Way<br>Naples, FL 34110<br>Phone: (239) 254-2000<br>Florida Certificate of<br>Authorization No.1772 | LEGAL DESCRIPTION<br>COMMUNITY DEVELOPMENT DISTRICT 2 | DRAWING NO.<br>8-7366-2<br>PROJECT NO.<br>1998070<br>FILE NAME<br>CO02 SKD_Rev02.dwg |
|--|----------------------------------|---|--|---|--|



**LEGEND**  
 COR. = CORNER  
 O.R. = OFFICIAL RECORDS BOOK  
 POB = POINT OF BEGINNING  
 R/W = RIGHT-OF-WAY  
 SEC. = SECTION



|                                   |                                  |   |   |   |   |
|-----------------------------------|----------------------------------|---|---|---|---|
| DRAWN BY:<br>R.A.K.<br>SHEET<br>4 | DATE:<br>9/7/16<br>OF SHEET<br>5 | <br><b>HOLE MONTES</b><br>ENGINEERS PLANNERS SURVEYORS | 950 Encore Way<br>Naples, FL, 34110<br>Phone: (239) 254-2000<br>Florida Certificate of<br>Authorization No.1772 | SKETCH OF LEGAL DESCRIPTION<br>COMMUNITY DEVELOPMENT DISTRICT 2 | DRAWING NO.<br>B-7366-2<br>PROJECT NO.<br>1998070<br>FILE NAME<br>0002 SKD_Rv02.dwg |
|-----------------------------------|----------------------------------|---|---|---|---|

SEC-TWN-RGE:  
11,13,14-51S-26E & 18-51S-27E

| CURVE TABLE |         |            |        |               |            |
|-------------|---------|------------|--------|---------------|------------|
| CURVE       | RADIUS  | DELTA      | CHORD  | CHORD BEARING | ARC LENGTH |
| C1          | 350.00  | 68°22'03"  | 383.13 | S12°43'35"E   | 405.42     |
| C2          | 150.00  | 110°27'50" | 246.44 | S34°46'28"E   | 289.19     |
| C3          | 20.00   | 52°30'17"  | 17.69  | N63°44'28"E   | 18.33      |
| C4          | 95.00   | 18°00'34"  | 24.82  | N44°59'37"E   | 24.89      |
| C5          | 20.00   | 52°30'17"  | 17.69  | N26°14'45"E   | 18.33      |
| C6          | 20.00   | 52°30'17"  | 17.69  | S26°15'32"E   | 18.33      |
| C7          | 95.00   | 18°00'34"  | 24.82  | S45°00'23"E   | 24.89      |
| C8          | 20.00   | 52°30'11"  | 17.69  | S63°45'11"E   | 18.33      |
| C9          | 320.00  | 28°39'13"  | 163.77 | S14°49'13"W   | 165.62     |
| C10         | 1190.00 | 18°38'38"  | 384.82 | S38°57'08"W   | 386.52     |
| C11         | 45.00   | 59°39'38"  | 44.77  | S44°45'59"E   | 46.86      |
| C12         | 62.58   | 18°38'25"  | 20.27  | S24°15'23"E   | 20.36      |
| C13         | 45.00   | 61°46'37"  | 46.20  | S02°41'17"E   | 48.52      |
| C14         | 300.00  | 28°33'16"  | 137.80 | S14°55'24"W   | 139.04     |
| C15         | 300.00  | 74°19'47"  | 382.47 | S38°48'40"W   | 389.19     |
| C16         | 300.00  | 85°58'55"  | 409.13 | S32°59'06"W   | 430.20     |
| C17         | 45.00   | 111°49'56" | 74.54  | S45°54'37"W   | 87.83      |
| C18         | 45.00   | 116°41'28" | 76.81  | N18°49'41"W   | 81.65      |
| C19         | 365.00  | 75°57'07"  | 449.19 | S78°42'20"W   | 483.85     |
| C20         | 45.00   | 107°40'34" | 72.88  | S16°58'44"W   | 84.57      |
| C21         | 260.00  | 74°43'05"  | 315.54 | S33°46'55"W   | 339.06     |
| C22         | 225.00  | 94°37'47"  | 330.79 | S43°44'16"W   | 371.61     |
| C23         | 285.00  | 18°35'10"  | 92.05  | N79°39'15"W   | 92.45      |

| CURVE TABLE |        |            |        |               |            |
|-------------|--------|------------|--------|---------------|------------|
| CURVE       | RADIUS | DELTA      | CHORD  | CHORD BEARING | ARC LENGTH |
| C24         | 80.00  | 42°52'13"  | 58.47  | S69°37'15"W   | 59.88      |
| C25         | 81.20  | 94°11'25"  | 118.95 | N84°43'04"W   | 133.49     |
| C26         | 200.00 | 23°47'41"  | 82.46  | N73°53'04"W   | 83.06      |
| C27         | 300.00 | 18°27'34"  | 85.89  | N77°33'08"W   | 86.18      |
| C28         | 150.00 | 61°29'33"  | 153.37 | N38°34'34"W   | 160.99     |
| C29         | 137.00 | 112°55'12" | 228.38 | N84°17'24"W   | 270.00     |
| C30         | 135.00 | 71°28'36"  | 157.70 | N85°00'42"W   | 168.41     |
| C31         | 250.00 | 38°03'08"  | 163.00 | N68°17'59"W   | 166.04     |
| C32         | 10.00  | 80°16'50"  | 12.89  | N47°11'08"W   | 14.01      |
| C33         | 100.00 | 54°47'04"  | 92.02  | N34°26'15"W   | 95.62      |
| C34         | 550.00 | 13°06'41"  | 125.58 | N68°23'07"W   | 125.86     |
| C35         | 500.00 | 48°58'38"  | 398.30 | N51°28'09"W   | 409.66     |
| C36         | 260.00 | 60°36'37"  | 282.39 | N58°18'09"W   | 275.04     |
| C37         | 100.00 | 69°20'20"  | 113.77 | S56°43'22"W   | 121.02     |
| C38         | 200.00 | 48°41'47"  | 164.91 | S46°24'06"W   | 189.98     |
| C39         | 700.00 | 13°28'58"  | 184.34 | S77°29'29"W   | 184.72     |
| C40         | 250.00 | 34°43'19"  | 149.20 | S66°52'18"W   | 151.50     |
| C41         | 475.00 | 62°08'00"  | 490.23 | S80°34'39"W   | 515.11     |
| C42         | 200.00 | 65°24'33"  | 216.12 | S78°56'22"W   | 228.32     |
| C43         | 150.00 | 43°19'39"  | 110.75 | S67°53'55"W   | 113.43     |
| C44         | 709.89 | 15°24'01"  | 190.23 | S70°44'39"W   | 190.81     |
| C45         | 350.00 | 37°05'11"  | 222.61 | N17°05'16"E   | 226.55     |

| LINE TABLE |             |        |
|------------|-------------|--------|
| LINE       | DIRECTION   | LENGTH |
| L1         | S35°39'17"W | 107.40 |
| L2         | N89°59'37"E | 58.44  |
| L3         | N89°59'37"E | 100.00 |
| L4         | S00°00'23"E | 130.00 |
| L5         | N89°59'37"E | 113.79 |
| L6         | S00°00'23"E | 150.36 |
| L7         | S28°12'02"W | 70.46  |
| L8         | N78°10'25"W | 194.68 |
| L9         | N38°31'03"E | 111.08 |
| L10        | N51°28'57"W | 105.27 |
| L11        | S03°34'37"E | 87.88  |
| L12        | N88°56'50"W | 322.37 |
| L13        | N88°56'39"W | 664.33 |

| LINE TABLE |             |        |
|------------|-------------|--------|
| LINE       | DIRECTION   | LENGTH |
| L14        | S04°47'07"W | 126.86 |
| L15        | N77°46'12"W | 78.84  |
| L16        | N88°51'53"W | 85.94  |
| L17        | N84°45'39"W | 685.72 |
| L18        | S05°42'49"W | 66.04  |
| L19        | N84°17'11"W | 48.52  |
| L20        | S28°00'46"W | 219.00 |
| L21        | N61°59'14"W | 667.71 |
| L22        | S59°15'00"W | 59.92  |
| L23        | N87°19'33"W | 86.72  |
| L24        | N07°02'43"W | 40.73  |
| L25        | N27°59'51"W | 47.49  |
| L26        | N88°38'28"W | 125.93 |

| LINE TABLE |             |         |
|------------|-------------|---------|
| LINE       | DIRECTION   | LENGTH  |
| L27        | S84°13'58"W | 169.90  |
| L28        | S89°33'44"W | 33.81   |
| L29        | N00°25'58"W | 2674.12 |
| L30        | N28°57'22"W | 100.00  |
| L31        | N00°25'37"W | 495.65  |
| L32        | N88°20'43"W | 693.91  |
| L33        | N52°51'27"W | 171.83  |
| L34        | S37°08'33"W | 122.51  |
| L35        | N88°20'43"W | 2557.48 |
| L36        | N00°02'07"E | 1389.87 |
| L37        | N88°05'43"W | 590.35  |
| L38        | N01°43'02"E | 1493.79 |
| L39        | S88°09'55"E | 1274.00 |

| LINE TABLE |             |         |
|------------|-------------|---------|
| LINE       | DIRECTION   | LENGTH  |
| L40        | S88°09'46"E | 1374.62 |
| L41        | N01°13'54"E | 1860.10 |
| L42        | S88°46'12"E | 518.33  |
| L43        | N35°37'51"E | 214.87  |
| L44        | S54°21'53"E | 807.97  |
| L45        | S01°00'06"W | 3308.61 |
| L46        | S88°05'23"E | 690.28  |
| L47        | S00°26'31"E | 687.45  |
| L48        | N88°13'02"W | 691.39  |
| L49        | N00°20'41"W | 688.94  |

DRAWN BY: R.A.K.  
 DATE: 9/7/18  
 SHEET 5 OF SHEET 5  
 SEC-TOWN-RGE: 11,13,14-51S-26E & 18-51S-27E

**H.M.**  
 HOLE MONTES  
 DIGITERS PLANNERS SURVEYORS  
 950 Encore Way  
 Naples, FL 34110  
 Phone: (239) 254-2000  
 Florida Certificate of  
 Authorization No. 1772

LINE AND CURVE TABLES  
 COMMUNITY DEVELOPMENT DISTRICT 2

DRAWING NO. B-7366-2  
 PROJECT NO. 199807D  
 FILE NAME: C002 SKD\_Rev02.dwg





LESS AND EXCEPT:

A PARCEL OF LAND LOCATED IN A PORTION OF SECTION 14,  
TOWNSHIP 51 SOUTH, RANGE 26 EAST, COLLIER COUNTY, FLORIDA,  
BEING MORE PARTICULARLY DESCRIBED AS FOLLOWS:

THE NORTHEAST  $\frac{1}{4}$  OF THE NORTHEAST  $\frac{1}{4}$  OF THE NORTHEAST  $\frac{1}{4}$  OF  
SECTION 14, TOWNSHIP 51 SOUTH, RANGE 26 EAST, COLLIER COUNTY,  
FLORIDA, CONTAINING 210.003 ACRES, MORE OR LESS.





**EXHIBIT B**

**RHODES & RHODES LAND SURVEYING, INC.**

28100 BONITA GRANDE DRIVE SUITE 107  
BONITA SPRINGS, FLORIDA 34135  
PHONE (839) 405-8166 FAX (839) 405-8163

LEGAL DESCRIPTION

A PARCEL OF LAND LOCATED IN SECTION 13, TOWNSHIP 51 SOUTH, RANGE 26 EAST AND SECTIONS 18 AND 19, TOWNSHIP 51 SOUTH, RANGE 27 EAST, COLLIER COUNTY, FLORIDA, BEING MORE PARTICULARLY DESCRIBED AS FOLLOWS:

COMMENCE AT THE WEST QUARTER CORNER OF SECTION 18, TOWNSHIP 51 SOUTH, RANGE 27 EAST, COLLIER COUNTY, FLORIDA; THENCE RUN ALONG THE WEST LINE OF SOUTHWEST QUARTER OF SAID SECTION 18, SOUTH 00°20'46" WEST, A DISTANCE OF 2,233.65 FEET TO THE POINT OF BEGINNING OF THE PARCEL OF LAND HEREIN DESCRIBED; THENCE NORTH 88°56'16" WEST, A DISTANCE OF 161.44 FEET TO A POINT OF CURVATURE; THENCE WESTERLY, 59.86 FEET ALONG THE ARC OF A CIRCULAR CURVE, CONCAVE SOUTHERLY, HAVING A RADIUS OF 80.00 FEET, THROUGH A CENTRAL ANGLE OF 42°52'13" AND BEING SUBTENDED BY A CHORD THAT BEARS SOUTH 69°37'38" WEST, 58.47 FEET TO A POINT OF REVERSE CURVATURE; THENCE WESTERLY, 133.49 FEET ALONG THE ARC OF A CIRCULAR CURVE, CONCAVE NORTHERLY, HAVING A RADIUS OF 81.20 FEET, THROUGH A CENTRAL ANGLE OF 94°11'25" AND BEING SUBTENDED BY A CHORD THAT BEARS NORTH 84°42'41" WEST, 118.96 FEET; THENCE SOUTH 04°47'30" WEST, A DISTANCE OF 125.63 FEET; THENCE NORTH 84°46'05" WEST, A DISTANCE OF 9.99 FEET; THENCE NORTH 77°45'48" WEST, A DISTANCE OF 68.76 FEET; THENCE NORTH 88°51'30" WEST, A DISTANCE OF 65.94 FEET; THENCE NORTH 84°45'16" WEST, A DISTANCE OF 595.29 FEET; THENCE NORTH 08°46'55" EAST, A DISTANCE OF 15.19 FEET; THENCE NORTH 81°13'05" WEST, A DISTANCE OF 86.83 FEET TO A POINT OF CURVATURE; THENCE SOUTHWESTERLY, 40.61 FEET ALONG THE ARC OF A CIRCULAR CURVE, CONCAVE SOUTHEASTERLY, HAVING A RADIUS OF 25.00 FEET, THROUGH A CENTRAL ANGLE OF 93°04'05" AND BEING SUBTENDED BY A CHORD THAT BEARS SOUTH 52°14'52" WEST, 36.29 FEET; THENCE SOUTH 05°42'49" WEST, A DISTANCE OF 16.93 FEET TO A POINT OF CURVATURE; THENCE SOUTHWESTERLY, 49.00 FEET ALONG THE ARC OF A CIRCULAR CURVE, CONCAVE NORTHWESTERLY, HAVING A RADIUS OF 25.00 FEET, THROUGH A CENTRAL ANGLE OF 112°17'57" AND BEING SUBTENDED BY A CHORD THAT BEARS SOUTH 61°51'48" WEST, 41.52 FEET; THENCE NORTH 61°59'14" WEST, A DISTANCE OF 75.11 FEET TO A POINT OF CURVATURE; THENCE NORTHERLY, 42.43 FEET ALONG THE ARC OF A CIRCULAR CURVE, CONCAVE EASTERLY, HAVING A RADIUS OF 30.00 FEET, THROUGH A CENTRAL ANGLE OF 81°02'25" AND BEING SUBTENDED BY A CHORD THAT BEARS NORTH 21°28'01" WEST, 38.98 FEET TO A POINT OF REVERSE CURVATURE; THENCE NORTHWESTERLY, 213.13 FEET ALONG THE ARC OF A CIRCULAR CURVE, CONCAVE SOUTHWESTERLY, HAVING A RADIUS OF 90.00 FEET, THROUGH A CENTRAL ANGLE OF 135°41'08" AND BEING SUBTENDED BY A CHORD THAT BEARS NORTH 48°47'22" WEST, 166.71 FEET TO A POINT OF REVERSE CURVATURE; THENCE WESTERLY, 61.99 FEET ALONG THE ARC OF A CIRCULAR CURVE, CONCAVE NORTHERLY, HAVING A RADIUS OF 65.00 FEET, THROUGH A CENTRAL ANGLE OF 54°38'43" AND BEING SUBTENDED BY A CHORD THAT BEARS NORTH 89°18'35" WEST, 59.67 FEET; THENCE NORTH 61°59'14" WEST, A DISTANCE OF 36.90 FEET; THENCE NORTH 21°37'59" EAST, A DISTANCE OF 250.74 FEET TO A POINT OF CURVATURE; THENCE NORTHERLY, 121.17 FEET ALONG THE ARC OF A CIRCULAR CURVE, CONCAVE WESTERLY, HAVING A RADIUS OF 230.00 FEET, THROUGH A CENTRAL ANGLE OF 30°11'06" AND BEING SUBTENDED BY A CHORD THAT BEARS NORTH 06°32'26" EAST, 119.77 FEET TO A POINT OF REVERSE CURVATURE; THENCE NORTHERLY, 34.24 FEET ALONG THE ARC OF A CIRCULAR CURVE, CONCAVE EASTERLY, HAVING A RADIUS OF 65.00 FEET, THROUGH A CENTRAL ANGLE OF 30°11'06" AND BEING SUBTENDED BY A CHORD THAT BEARS NORTH 06°32'26" EAST, 33.85 FEET; THENCE NORTH 21°37'59" EAST, A DISTANCE OF 100.89 FEET TO A POINT OF CURVATURE; THENCE NORTHERLY, 162.28 FEET ALONG THE ARC OF A CIRCULAR CURVE, CONCAVE WESTERLY, HAVING A RADIUS OF 1,190.00 FEET, THROUGH A CENTRAL ANGLE OF 07°48'48" AND BEING SUBTENDED BY A CHORD THAT BEARS NORTH 17°43'35" EAST, 162.15 FEET TO A POINT OF REVERSE CURVATURE; THENCE NORTHERLY, 138.92 FEET ALONG THE ARC OF A CIRCULAR CURVE, CONCAVE EASTERLY, HAVING A RADIUS OF 510.00 FEET, THROUGH A CENTRAL ANGLE OF 15°36'23" AND BEING SUBTENDED BY A CHORD THAT BEARS NORTH 21°37'22" EAST, 138.49 FEET TO A POINT OF REVERSE CURVATURE; THENCE NORTHERLY, 376.91 FEET ALONG THE ARC OF A CIRCULAR CURVE, CONCAVE WESTERLY, HAVING A RADIUS OF 890.00 FEET, THROUGH A CENTRAL ANGLE OF 24°15'51" AND BEING SUBTENDED BY A CHORD THAT BEARS NORTH 17°17'38" EAST, 374.10 FEET TO A POINT OF



**RHODES & RHODES LAND SURVEYING, INC.**

88100 BONITA GRANDE DRIVE SUITE 107  
BONITA SPRINGS, FLORIDA 34135  
PHONE (889) 405-8166 FAX (889) 405-8163

REVERSE CURVATURE; THENCE NORTHEASTERLY, 56.89 FEET ALONG THE ARC OF A CIRCULAR CURVE, CONCAVE SOUTHEASTERLY, HAVING A RADIUS OF 50.00 FEET, THROUGH A CENTRAL ANGLE OF 65°11'08" AND BEING SUBTENDED BY A CHORD THAT BEARS NORTH 37°45'17" EAST, 53.87 FEET; THENCE NORTH 68°59'19" EAST, A DISTANCE OF 25.61 FEET; THENCE SOUTH 51°48'02" EAST, A DISTANCE OF 171.93 FEET TO A POINT ON A NON-TANGENTIAL CURVE; THENCE NORTHEASTERLY, 143.41 FEET ALONG THE ARC OF A CIRCULAR CURVE, CONCAVE SOUTHEASTERLY, HAVING A RADIUS OF 895.00 FEET, THROUGH A CENTRAL ANGLE OF 09°10'51" AND BEING SUBTENDED BY A CHORD THAT BEARS NORTH 44°11'54" EAST, 143.26 FEET TO A POINT OF REVERSE CURVATURE; THENCE NORTHEASTERLY, 157.90 FEET ALONG THE ARC OF A CIRCULAR CURVE, CONCAVE NORTHWESTERLY, HAVING A RADIUS OF 668.60 FEET, THROUGH A CENTRAL ANGLE OF 13°31'53" AND BEING SUBTENDED BY A CHORD THAT BEARS NORTH 42°01'23" EAST, 157.53 FEET TO A POINT OF COMPOUND CURVATURE; THENCE NORTHEASTERLY, 185.88 FEET ALONG THE ARC OF A CIRCULAR CURVE, CONCAVE NORTHWESTERLY, HAVING A RADIUS OF 500.00 FEET, THROUGH A CENTRAL ANGLE OF 21°18'01" AND BEING SUBTENDED BY A CHORD THAT BEARS NORTH 24°36'26" EAST, 184.81 FEET; THENCE NORTH 13°57'25" EAST, A DISTANCE OF 434.86 FEET TO A POINT OF CURVATURE; THENCE NORTHEASTERLY, 389.88 FEET ALONG THE ARC OF A CIRCULAR CURVE, CONCAVE SOUTHEASTERLY, HAVING A RADIUS OF 495.00 FEET, THROUGH A CENTRAL ANGLE OF 45°07'42" AND BEING SUBTENDED BY A CHORD THAT BEARS NORTH 36°31'16" EAST, 379.88 FEET TO A POINT OF REVERSE CURVATURE; THENCE NORTHEASTERLY, 151.58 FEET ALONG THE ARC OF A CIRCULAR CURVE, CONCAVE NORTHWESTERLY, HAVING A RADIUS OF 150.00 FEET, THROUGH A CENTRAL ANGLE OF 57°54'01" AND BEING SUBTENDED BY A CHORD THAT BEARS NORTH 30°08'06" EAST, 145.21 FEET TO A POINT ON A NON-TANGENTIAL CURVE; THENCE EASTERLY, 303.95 FEET ALONG THE ARC OF A CIRCULAR CURVE, CONCAVE NORTHERLY, HAVING A RADIUS OF 255.00 FEET, THROUGH A CENTRAL ANGLE OF 68°17'37" AND BEING SUBTENDED BY A CHORD THAT BEARS NORTH 72°41'19" EAST, 286.27 FEET TO A POINT OF REVERSE CURVATURE; THENCE NORTHEASTERLY, 214.76 FEET ALONG THE ARC OF A CIRCULAR CURVE, CONCAVE SOUTHEASTERLY, HAVING A RADIUS OF 250.00 FEET, THROUGH A CENTRAL ANGLE OF 49°13'09" AND BEING SUBTENDED BY A CHORD THAT BEARS NORTH 63°09'05" EAST, 208.22 FEET TO A POINT OF REVERSE CURVATURE; THENCE NORTHEASTERLY, 248.23 FEET ALONG THE ARC OF A CIRCULAR CURVE, CONCAVE NORTHWESTERLY, HAVING A RADIUS OF 210.00 FEET, THROUGH A CENTRAL ANGLE OF 67°43'34" AND BEING SUBTENDED BY A CHORD THAT BEARS NORTH 53°53'52" EAST, 234.03 FEET TO A POINT OF REVERSE CURVATURE; THENCE NORTHEASTERLY, 122.11 FEET ALONG THE ARC OF A CIRCULAR CURVE, CONCAVE SOUTHEASTERLY, HAVING A RADIUS OF 100.00 FEET, THROUGH A CENTRAL ANGLE OF 69°57'55" AND BEING SUBTENDED BY A CHORD THAT BEARS NORTH 55°01'02" EAST, 114.67 FEET TO A POINT OF REVERSE CURVATURE; THENCE EASTERLY, 57.32 FEET ALONG THE ARC OF A CIRCULAR CURVE, CONCAVE NORTHERLY, HAVING A RADIUS OF 100.00 FEET, THROUGH A CENTRAL ANGLE OF 32°50'27" AND BEING SUBTENDED BY A CHORD THAT BEARS NORTH 73°34'46" EAST, 56.54 FEET; THENCE NORTH 57°09'32" EAST, A DISTANCE OF 115.02 FEET; THENCE NORTH 04°35'06" WEST, A DISTANCE OF 86.36 FEET TO A POINT ON A NON-TANGENTIAL CURVE; THENCE NORTHEASTERLY, 528.63 FEET ALONG THE ARC OF A CIRCULAR CURVE, CONCAVE NORTHWESTERLY, HAVING A RADIUS OF 830.00 FEET, THROUGH A CENTRAL ANGLE OF 36°29'32" AND BEING SUBTENDED BY A CHORD THAT BEARS NORTH 66°47'03" EAST, 519.74 FEET TO A POINT OF REVERSE CURVATURE; THENCE EASTERLY, 403.75 FEET ALONG THE ARC OF A CIRCULAR CURVE, CONCAVE SOUTHERLY, HAVING A RADIUS OF 300.00 FEET, THROUGH A CENTRAL ANGLE OF 77°06'37" AND BEING SUBTENDED BY A CHORD THAT BEARS NORTH 87°05'36" EAST, 373.96 FEET; THENCE NORTH 35°38'54" EAST, A DISTANCE OF 200.00 FEET; THENCE SOUTH 54°21'06" EAST, A DISTANCE OF 910.68 FEET; THENCE SOUTH 35°39'40" WEST, A DISTANCE OF 103.80 FEET TO A POINT ON A NON-TANGENTIAL CURVE; THENCE SOUTHERLY, 405.42 FEET ALONG THE ARC OF A CIRCULAR CURVE, CONCAVE WESTERLY, HAVING A RADIUS OF 350.00 FEET, THROUGH A CENTRAL ANGLE OF 66°22'03" AND BEING SUBTENDED BY A CHORD THAT BEARS SOUTH 12°43'12" EAST, 383.13 FEET TO A POINT OF REVERSE CURVATURE; THENCE SOUTHEASTERLY, 289.19 FEET ALONG THE ARC OF A CIRCULAR CURVE, CONCAVE NORTHEASTERLY, HAVING A RADIUS OF 150.00 FEET, THROUGH A CENTRAL ANGLE OF 110°27'50" AND BEING SUBTENDED BY A CHORD THAT BEARS SOUTH 34°46'05" EAST, 246.44 FEET; THENCE SOUTH 90°00'00" EAST, A DISTANCE OF 58.44 FEET TO A POINT OF CURVATURE; THENCE NORTHEASTERLY, 18.33 FEET ALONG THE ARC OF A CIRCULAR



# **RHODES & RHODES LAND SURVEYING, INC**

85100 BONITA GRANDE DRIVE SUITE 107  
BONITA SPRINGS, FLORIDA 34135  
PHONE (239) 405-8166 FAX (239) 405-8163

CURVE, CONCAVE NORTHWESTERLY, HAVING A RADIUS OF 20.00 FEET, THROUGH A CENTRAL ANGLE OF 52°30'17" AND BEING SUBTENDED BY A CHORD THAT BEARS NORTH 63°44'51" EAST, 17.69 FEET TO A POINT OF REVERSE CURVATURE; THENCE NORTHEASTERLY, 24.89 FEET ALONG THE ARC OF A CIRCULAR CURVE, CONCAVE SOUTHEASTERLY, HAVING A RADIUS OF 95.00 FEET, THROUGH A CENTRAL ANGLE OF 15°00'34" AND BEING SUBTENDED BY A CHORD THAT BEARS NORTH 45°00'00" EAST, 24.82 FEET TO A POINT OF REVERSE CURVATURE; THENCE NORTHEASTERLY, 18.33 FEET ALONG THE ARC OF A CIRCULAR CURVE, CONCAVE NORTHWESTERLY, HAVING A RADIUS OF 20.00 FEET, THROUGH A CENTRAL ANGLE OF 52°30'17" AND BEING SUBTENDED BY A CHORD THAT BEARS NORTH 26°15'09" EAST, 17.69 FEET; THENCE SOUTH 90°00'00" EAST, A DISTANCE OF 100.00 FEET TO A POINT ON A NON-TANGENTIAL CURVE; THENCE SOUTHEASTERLY, 18.33 FEET ALONG THE ARC OF A CIRCULAR CURVE, CONCAVE NORTHEASTERLY, HAVING A RADIUS OF 20.00 FEET, THROUGH A CENTRAL ANGLE OF 52°30'17" AND BEING SUBTENDED BY A CHORD THAT BEARS SOUTH 26°15'09" EAST, 17.69 FEET TO A POINT OF REVERSE CURVATURE; THENCE SOUTHEASTERLY, 24.89 FEET ALONG THE ARC OF A CIRCULAR CURVE, CONCAVE SOUTHWESTERLY, HAVING A RADIUS OF 95.00 FEET, THROUGH A CENTRAL ANGLE OF 15°00'34" AND BEING SUBTENDED BY A CHORD THAT BEARS SOUTH 45°00'00" EAST, 24.82 FEET TO A POINT OF REVERSE CURVATURE; THENCE SOUTHEASTERLY, 18.33 FEET ALONG THE ARC OF A CIRCULAR CURVE, CONCAVE NORTHEASTERLY, HAVING A RADIUS OF 20.00 FEET, THROUGH A CENTRAL ANGLE OF 52°30'11" AND BEING SUBTENDED BY A CHORD THAT BEARS SOUTH 63°44'48" EAST, 17.69 FEET; THENCE SOUTH 00°00'00" WEST, A DISTANCE OF 130.00 FEET; THENCE SOUTH 90°00'00" EAST, A DISTANCE OF 113.79 FEET; THENCE SOUTH 00°00'00" WEST, A DISTANCE OF 150.36 FEET TO A POINT OF CURVATURE; THENCE SOUTHERLY, 165.62 FEET ALONG THE ARC OF A CIRCULAR CURVE, CONCAVE WESTERLY, HAVING A RADIUS OF 320.00 FEET, THROUGH A CENTRAL ANGLE OF 29°39'13" AND BEING SUBTENDED BY A CHORD THAT BEARS SOUTH 14°49'36" WEST, 163.77 FEET TO A POINT OF COMPOUND CURVATURE; THENCE SOUTHWESTERLY, 386.52 FEET ALONG THE ARC OF A CIRCULAR CURVE, CONCAVE NORTHWESTERLY, HAVING A RADIUS OF 1,190.00 FEET, THROUGH A CENTRAL ANGLE OF 18°36'36" AND BEING SUBTENDED BY A CHORD THAT BEARS SOUTH 38°57'31" WEST, 384.82 FEET TO A POINT ON A NON-TANGENTIAL CURVE; THENCE SOUTHEASTERLY, 46.86 FEET ALONG THE ARC OF A CIRCULAR CURVE, CONCAVE SOUTHWESTERLY, HAVING A RADIUS OF 45.00 FEET, THROUGH A CENTRAL ANGLE OF 59°39'38" AND BEING SUBTENDED BY A CHORD THAT BEARS SOUTH 44°45'36" EAST, 44.77 FEET TO A POINT OF REVERSE CURVATURE; THENCE SOUTHEASTERLY, 20.36 FEET ALONG THE ARC OF A CIRCULAR CURVE, CONCAVE NORTHEASTERLY, HAVING A RADIUS OF 62.58 FEET, THROUGH A CENTRAL ANGLE OF 18°38'25" AND BEING SUBTENDED BY A CHORD THAT BEARS SOUTH 24°15'00" EAST, 20.27 FEET TO A POINT OF REVERSE CURVATURE; THENCE SOUTHERLY, 48.52 FEET ALONG THE ARC OF A CIRCULAR CURVE, CONCAVE WESTERLY, HAVING A RADIUS OF 45.00 FEET, THROUGH A CENTRAL ANGLE OF 61°46'37" AND BEING SUBTENDED BY A CHORD THAT BEARS SOUTH 02°40'53" EAST, 46.20 FEET; THENCE SOUTH 28°12'25" WEST, A DISTANCE OF 70.46 FEET TO A POINT OF CURVATURE; THENCE SOUTHERLY, 139.04 FEET ALONG THE ARC OF A CIRCULAR CURVE, CONCAVE EASTERLY, HAVING A RADIUS OF 300.00 FEET, THROUGH A CENTRAL ANGLE OF 26°33'16" AND BEING SUBTENDED BY A CHORD THAT BEARS SOUTH 14°55'47" WEST, 137.80 FEET TO A POINT OF REVERSE CURVATURE; THENCE SOUTHWESTERLY, 389.19 FEET ALONG THE ARC OF A CIRCULAR CURVE, CONCAVE NORTHWESTERLY, HAVING A RADIUS OF 300.00 FEET, THROUGH A CENTRAL ANGLE OF 74°19'47" AND BEING SUBTENDED BY A CHORD THAT BEARS SOUTH 38°49'03" WEST, 362.47 FEET TO A POINT OF REVERSE CURVATURE; THENCE SOUTHWESTERLY, 450.20 FEET ALONG THE ARC OF A CIRCULAR CURVE, CONCAVE SOUTHEASTERLY, HAVING A RADIUS OF 300.00 FEET, THROUGH A CENTRAL ANGLE OF 85°58'55" AND BEING SUBTENDED BY A CHORD THAT BEARS SOUTH 32°59'29" WEST, 409.13 FEET TO A POINT OF REVERSE CURVATURE; THENCE SOUTHWESTERLY, 87.83 FEET ALONG THE ARC OF A CIRCULAR CURVE, CONCAVE NORTHWESTERLY, HAVING A RADIUS OF 45.00 FEET, THROUGH A CENTRAL ANGLE OF 111°49'56" AND BEING SUBTENDED BY A CHORD THAT BEARS SOUTH 45°55'00" WEST, 74.54 FEET; THENCE NORTH 78°10'02" WEST, A DISTANCE OF 194.68 FEET TO A POINT OF CURVATURE; THENCE NORTHERLY, 91.65 FEET ALONG THE ARC OF A CIRCULAR CURVE, CONCAVE EASTERLY, HAVING A RADIUS OF 45.00 FEET, THROUGH A CENTRAL ANGLE OF 116°41'28" AND BEING SUBTENDED BY A CHORD THAT BEARS NORTH 19°49'18" WEST, 76.61 FEET; THENCE NORTH 38°31'26" EAST, A DISTANCE OF 111.08 FEET; THENCE NORTH 51°28'34" WEST, A DISTANCE OF 105.27 FEET TO A POINT ON A NON-

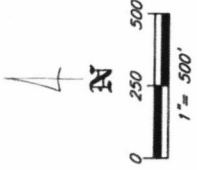
***RHODES & RHODES LAND SURVEYING, INC***

28100 BONITA GRANDE DRIVE SUITE 107  
BONITA SPRINGS, FLORIDA 34135  
PHONE (239) 405-8166 FAX (239) 405-8163

TANGENTIAL CURVE; THENCE WESTERLY, 483.85 FEET ALONG THE ARC OF A CIRCULAR CURVE, CONCAVE NORTHERLY, HAVING A RADIUS OF 365.00 FEET, THROUGH A CENTRAL ANGLE OF  $75^{\circ}57'07''$  AND BEING SUBTENDED BY A CHORD THAT BEARS SOUTH  $78^{\circ}42'43''$  WEST, 449.19 FEET TO A POINT ON A NON-TANGENTIAL CURVE; THENCE SOUTHERLY, 84.57 FEET ALONG THE ARC OF A CIRCULAR CURVE, CONCAVE WESTERLY, HAVING A RADIUS OF 45.00 FEET, THROUGH A CENTRAL ANGLE OF  $107^{\circ}40'34''$  AND BEING SUBTENDED BY A CHORD THAT BEARS SOUTH  $16^{\circ}59'07''$  WEST, 72.66 FEET TO A POINT ON A NON-TANGENTIAL CURVE; THENCE SOUTHWESTERLY, 339.06 FEET ALONG THE ARC OF A CIRCULAR CURVE, CONCAVE SOUTHEASTERLY, HAVING A RADIUS OF 260.00 FEET, THROUGH A CENTRAL ANGLE OF  $74^{\circ}43'05''$  AND BEING SUBTENDED BY A CHORD THAT BEARS SOUTH  $33^{\circ}47'18''$  WEST, 315.54 FEET; THENCE SOUTH  $03^{\circ}34'14''$  EAST, A DISTANCE OF 87.88 FEET TO A POINT OF CURVATURE; THENCE SOUTHWESTERLY, 371.61 FEET ALONG THE ARC OF A CIRCULAR CURVE, CONCAVE NORTHWESTERLY, HAVING A RADIUS OF 225.00 FEET, THROUGH A CENTRAL ANGLE OF  $94^{\circ}37'47''$  AND BEING SUBTENDED BY A CHORD THAT BEARS SOUTH  $43^{\circ}44'40''$  WEST, 330.79 FEET; THENCE NORTH  $88^{\circ}56'27''$  WEST, A DISTANCE OF 322.37 FEET TO A POINT OF CURVATURE; THENCE WESTERLY, 92.45 FEET ALONG THE ARC OF A CIRCULAR CURVE, CONCAVE NORTHERLY, HAVING A RADIUS OF 285.00 FEET, THROUGH A CENTRAL ANGLE OF  $18^{\circ}35'10''$  AND BEING SUBTENDED BY A CHORD THAT BEARS NORTH  $79^{\circ}38'52''$  WEST, 92.05 FEET; THENCE NORTH  $88^{\circ}56'16''$  WEST, A DISTANCE OF 502.88 FEET TO THE POINT OF BEGINNING.

CONTAINING 9,147,731 SQUARE FEET OR 210.003 ACRES, MORE OR LESS.





**NOTES**

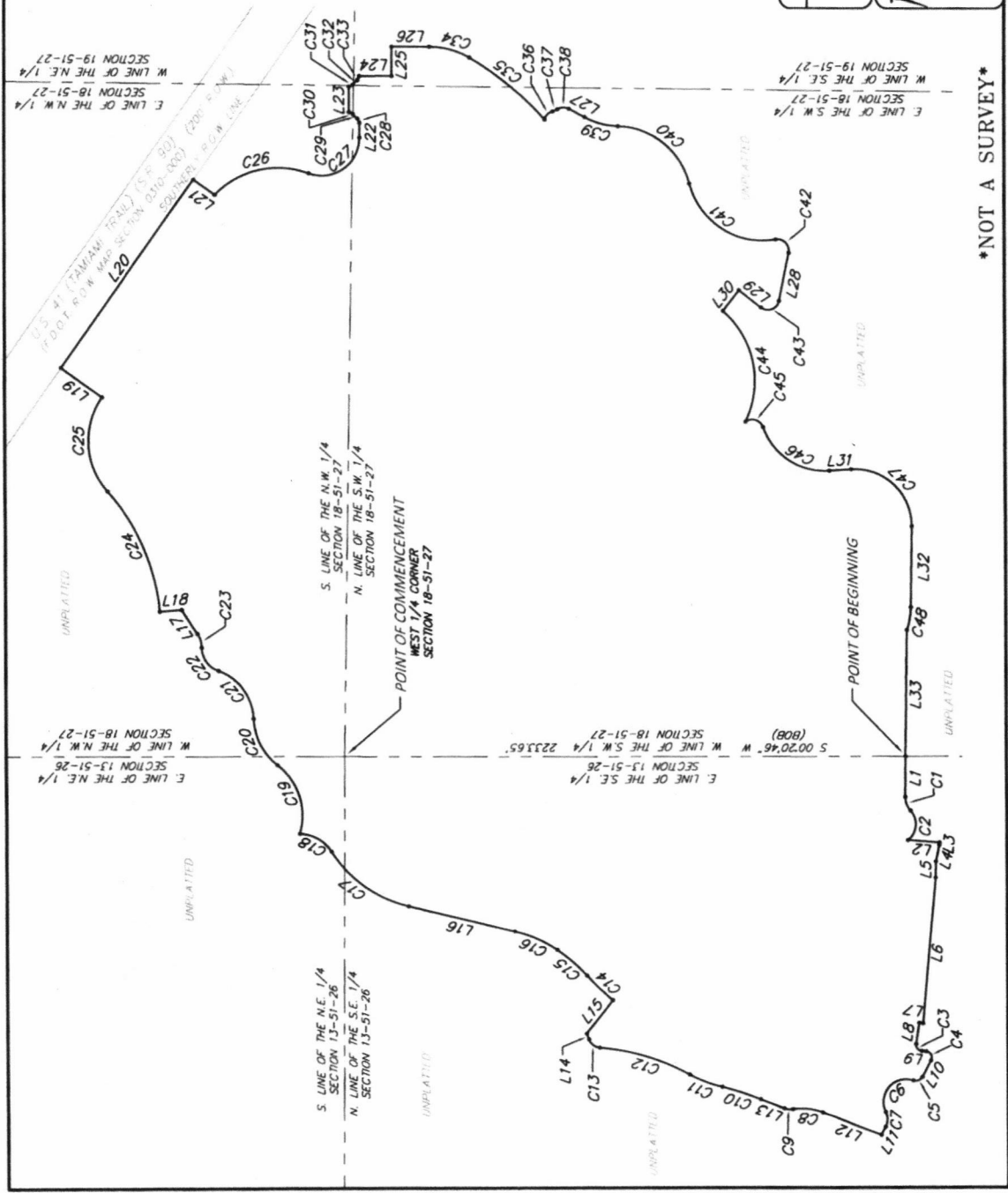
1. BEARINGS SHOWN HEREON ARE BASED ON THE WEST LINE OF THE SOUTHWEST QUARTER OF SECTION 18, TOWNSHIP 51 SOUTH, RANGE 27 EAST, BEING SOUTH 07°20'46" WEST, AND RELATE TO THE STATE PLANE COORDINATE SYSTEM ESTABLISHED BY THE NATIONAL GEODETIC SURVEY FOR FLORIDA EAST ZONE, 1983 DATUM WITH 1990 ADJUSTMENT.
2. SUBJECT TO EASEMENTS, RESERVATIONS AND RESTRICTIONS OF RECORD.
3. ALL DIMENSIONS ARE IN FEET AND DECIMALS THEREOF, UNLESS OTHERWISE NOTED.

**ABBREVIATIONS**

- P.O.B. = POINT OF BEGINNING
- P.S.M. = PROFESSIONAL SURVEYOR & MAPPER
- L.B.# = LICENSED BUSINESS NUMBER
- L1 = LINE NUMBER
- C1 = CURVE NUMBER
- S.C.W. = SPIRE-OF-WAY
- S.F. = STATE FOOT
- F.D.O.T. = FLORIDA DEPARTMENT OF TRANSPORTATION

BY: JOHN SCOTT RHODES PSM #5739

|                               |  |   |
|-------------------------------|--|---|
| <b>SKETCH AND DESCRIPTION</b> |  | PSM: JSR                                      |
| <b>CDD PARCEL</b>             |  | DRAWN: RWC                                    |
|                               |  | CHECKED:                                      |
|                               |  | DATE: DECEMBER 6, 2018                        |
|                               |  | SCALE: 1" = 500'                              |
|                               |  | CADD FILE: 2018-1099.DWG                      |
|                               |  | VIEW: SKETCH                                  |
|                               |  | PROJECT#: 2018-1099                           |
|                               |  | STREET #: 28100 BONITA GRANDE DRIVE SUITE 107 |
|                               |  | 28100 BONITA GRANDE DRIVE SUITE 107           |
|                               |  | BONITA SPRINGS, FL 34135                      |
|                               |  | (239) 405-8166 (239) 405-8163 FAX             |
|                               |  | SHEET #: 5 of 6                               |



\*NOT A SURVEY\*





| LINE | LENGTH  | BEARING       |
|------|---------|---------------|
| L1   | 161.44' | N 88°56'16" W |
| L2   | 125.63' | S 04°47'10" W |
| L3   | 9.99'   | N 84°46'05" W |
| L4   | 68.95'  | N 72°45'48" W |
| L5   | 65.94'  | N 68°51'10" W |
| L6   | 593.29' | N 84°45'16" W |
| L7   | 15.19'  | N 08°46'35" E |
| L8   | 86.93'  | N 81°13'05" W |
| L9   | 16.93'  | S 05°42'49" W |
| L10  | 75.11'  | N 61°59'14" W |
| L11  | 36.90'  | N 21°37'59" E |
| L12  | 250.74' | N 21°37'59" E |
| L13  | 100.89' | N 68°59'19" E |
| L14  | 25.61'  | S 51°48'02" E |
| L15  | 171.93' | S 51°48'02" E |
| L16  | 414.86' | N 13°57'25" E |
| L17  | 115.02' | N 57°09'19" E |
| L18  | 86.95'  | N 04°15'06" W |
| L19  | 200.00' | N 15°18'54" E |
| L20  | 970.68' | S 84°21'06" E |
| L21  | 103.80' | S 35°39'40" W |
| L22  | 58.44'  | S 90°00'00" E |
| L23  | 100.00' | S 90°00'00" E |
| L24  | 130.00' | S 00°00'00" W |
| L25  | 113.79' | S 90°00'00" E |
| L26  | 150.36' | S 28°12'25" W |
| L27  | 70.46'  | S 78°10'02" W |
| L28  | 194.68' | N 38°31'26" E |
| L29  | 111.08' | N 51°28'34" W |
| L30  | 105.27' | N 51°28'34" W |
| L31  | 87.88'  | S 03°34'14" E |
| L32  | 122.37' | N 88°56'16" W |
| L33  | 502.88' | N 88°56'16" W |

| CURVE | CURVE TABLE |            |         | CHORD BEARING |
|-------|-------------|------------|---------|---------------|
|       | RADIUS      | DELTA      | LENGTH  |               |
| C1    | 80.00'      | 42°52'11"  | 58.47'  | S 69°17'38" W |
| C2    | 81.20'      | 94°17'25"  | 118.96' | N 84°42'41" W |
| C3    | 25.00'      | 93°04'05"  | 40.61'  | S 52°14'52" W |
| C4    | 25.00'      | 112°17'57" | 49.00'  | S 61°51'46" W |
| C5    | 30.00'      | 81°02'25"  | 42.43'  | S 21°28'01" W |
| C6    | 65.00'      | 15°41'08"  | 213.13' | N 89°18'15" W |
| C7    | 65.00'      | 54°38'43"  | 61.99'  | N 89°18'15" W |
| C8    | 230.00'     | 307°11'06" | 121.17' | N 06°32'26" E |
| C9    | 65.00'      | 307°11'06" | 34.24'  | N 06°32'26" E |
| C10   | 1190.00'    | 7°48'48"   | 162.28' | N 17°43'35" E |
| C11   | 510.00'     | 15°36'23"  | 138.92' | N 21°37'22" E |
| C12   | 890.00'     | 24°15'51"  | 376.91' | N 17°17'18" E |
| C13   | 50.00'      | 65°11'08"  | 56.89'  | N 37°45'17" E |
| C14   | 895.00'     | 97°01'51"  | 143.41' | N 44°11'54" E |
| C15   | 668.00'     | 131°11'53" | 157.90' | N 42°01'23" E |
| C16   | 500.00'     | 21°18'01"  | 185.88' | N 24°16'26" E |
| C17   | 495.00'     | 45°07'42"  | 389.88' | N 36°31'16" E |
| C18   | 150.00'     | 57°54'01"  | 151.58' | N 30°08'06" E |
| C19   | 255.00'     | 68°17'37"  | 303.95' | N 22°41'19" E |
| C20   | 250.00'     | 49°13'09"  | 214.76' | N 63°09'00" E |
| C21   | 210.00'     | 67°43'14"  | 248.23' | N 53°53'52" E |
| C22   | 100.00'     | 69°57'55"  | 122.11' | N 55°01'02" E |
| C23   | 100.00'     | 32°50'27"  | 57.32'  | N 73°34'46" E |
| C24   | 830.00'     | 36°29'32"  | 528.63' | N 66°47'03" E |
| C25   | 300.00'     | 77°06'37"  | 403.75' | N 87°05'36" E |
| C26   | 350.00'     | 66°22'03"  | 405.42' | N 83°13'12" E |
| C27   | 150.00'     | 110°27'50" | 289.19' | N 24°46'05" E |
| C28   | 20.00'      | 52°10'17"  | 18.13'  | N 63°44'51" E |
| C29   | 95.00'      | 157°03'14" | 24.89'  | N 45°00'00" E |
| C30   | 20.00'      | 52°10'17"  | 18.13'  | N 26°15'09" E |
| C31   | 20.00'      | 52°10'17"  | 18.13'  | N 17°69'      |
| C32   | 95.00'      | 130°03'14" | 24.89'  | N 45°00'00" E |
| C33   | 20.00'      | 52°30'11"  | 18.13'  | N 17°69'      |
| C34   | 190.00'     | 29°39'13"  | 163.62' | N 14°49'36" W |
| C35   | 190.00'     | 18°36'36"  | 386.52' | N 39°57'31" W |
| C36   | 45.00'      | 59°39'38"  | 46.86'  | N 44°45'36" E |
| C37   | 62.58'      | 18°38'25"  | 20.36'  | N 02°40'53" E |
| C38   | 45.00'      | 61°46'37"  | 48.52'  | N 14°55'47" W |
| C39   | 300.00'     | 26°33'16"  | 139.04' | N 38°49'03" W |
| C40   | 300.00'     | 74°19'47"  | 389.19' | N 32°59'29" W |
| C41   | 300.00'     | 85°58'55"  | 450.20' | N 45°00'00" W |
| C42   | 45.00'      | 111°49'28" | 87.63'  | N 19°49'16" E |
| C43   | 365.00'     | 75°57'02"  | 483.85' | N 28°42'43" W |
| C44   | 45.00'      | 107°40'34" | 84.57'  | N 16°59'07" W |
| C45   | 45.00'      | 107°40'34" | 84.57'  | N 16°59'07" W |
| C46   | 260.00'     | 24°43'05"  | 339.06' | N 33°47'18" W |
| C47   | 225.00'     | 94°37'44"  | 371.61' | N 43°44'40" W |
| C48   | 285.00'     | 18°35'10"  | 92.45'  | N 29°38'52" W |

**SKETCH AND DESCRIPTION**

**CDD PARCEL**

date: DECEMBER 6, 2018  
scale: 1" = 500'  
cadd file: 2018-1089.DWG

checked: JSR  
drawn: RWC

view: SKETCH  
project: 2018-1089

sheet #: 6 of 6

28100 BONITA GRANDE DRIVE SUITE 107  
BONITA SPRINGS, FL 34135  
(239) 405-8166 (239) 405-8163 FAX

\*NOT A SURVEY\*





## FLORIDA DEPARTMENT *of* STATE

**RON DESANTIS**  
Governor

**LAUREL M. LEE**  
Secretary of State

June 27, 2019

Ms. Teresa L. Cannon, BMR Senior Clerk II  
Office of the Clerk of the Circuit Court  
& Comptroller of Collier County  
3299 Tamiami Trail, Suite #401  
Naples, Florida 34112-5324

Dear Ms. Cannon:

Pursuant to the provisions of Section 125.66, Florida Statutes, this will acknowledge receipt of your electronic copy of Collier County Ordinance No. 19-15, which was filed in this office on June 27, 2019.

Sincerely,

Ernest L. Reddick  
Program Administrator

ELR/lb