

ITEM NO.	IDENTIFICATION
1	HAZARDOUS LOCATION OUTLET BOX - 21 CU.IN.
2	HAZARDOUS LOCATION OUTLET BOX COVER
3	RUBBER COVER GASKET
4	PAR 38 LAMP HOLDER AND COVER
5	REDUCING BUSHING
6	3/4" CLOSE NIPPLE (TYPICAL)
7	3/4" LOCKNUT (TYPICAL)
8	3/4" HOLE PLUG (AS NEEDED)
9	ASTRO MINI-BRAC CABLE MNT. (STAINLESS UPGRADE)
10	PAR 38 WHITE LED FLOOD LAMP (90 WATT EQUIVALENT)
11	DETECTOR UNIT
12	POST CAP

NOTES:

- ALL ELECTRICAL ITEMS, EXCEPT ITEM #11, SHALL BE CAST ALUMINUM, MALLEABLE IRON, POWDER COATED STEEL, GALVANIZED AND/OR STAINLESS STEEL.
- ITEM #1- OZ/GEDNEY FSX-1-50 OR APPROVED EQUIVALENT.
ITEM #2- MULBERRY CON-0-SHADE LAMP SHIELD OR APPROVED EQUIVALENT.
ITEM #9- ASTRO MINI-BRAC CABLE MNT. WITH STAINLESS UPGRADE OR APPROVED EQUIVALENT.
- WHEN POST MOUNTING IS SPECIFIED, ITEM #9 SHALL NOT BE REQUIRED. THE DETECTION UNIT SHALL BE MOUNTED DIRECTLY ON TOP OF THE CAP BY DRILLING AND TAPPING A 3/4" HOLE WITH PIPE THREADS. THE POST CAP SHALL EITHER BE SCREWED TO THE TOP OF THE POST OR A MINIMUM OF 3 TIGHTENING SCREWS SHALL BE REQUIRED ON EACH CAP.
- MAST ARM INSTALLATION: DRILL 3/4" HOLE ON MAST ARM AND INSTALL GROMMET.
- EMERGENCY VEHICLE DETECTOR SHALL BE PLUMB.
- KNOCK OUT EMERGENCY VEHICLE DETECTOR WEEP HOLE BEFORE INSTALLING.
- EACH 1-WAY EMERGENCY CONFIRMATION LIGHT ASSEMBLY SHALL HAVE AN I.M.S.A. 19-1 OR 20-1 STRANDED 5 CONDUCTOR CABLE INSTALLED CONTINUOUS FROM THE CONTROLLER ASSEMBLY TO THE EMERGENCY CONFIRMATION LIGHT OUTLET BOX.
- EACH 2-WAY EMERGENCY CONFIRMATION LIGHT ASSEMBLY SHALL HAVE AN I.M.S.A. 19-1 OR 20-1 STRANDED 7 CONDUCTOR CABLE INSTALLED CONTINUOUS FROM THE CONTROLLER ASSEMBLY TO THE EMERGENCY CONFIRMATION LIGHT OUTLET BOX.
- CONFIRMATION INDICATOR SHALL BE L.E.D., NON-DIMMABLE, PAR 38 LAMP, 14 WATTS (90 INCANDESCENT WATTAGE COMPARISON), ANGLE BEAM 40 DEGREES, MANUFACTURED BY: TCP, PART NUMBER: LED14P3830KFL OR APPROVED EQUIVALENT.

TYPICAL EMERGENCY VEHICLE DETECTOR WITH CONFIRMATION LIGHT DETAIL.

NOT TO SCALE

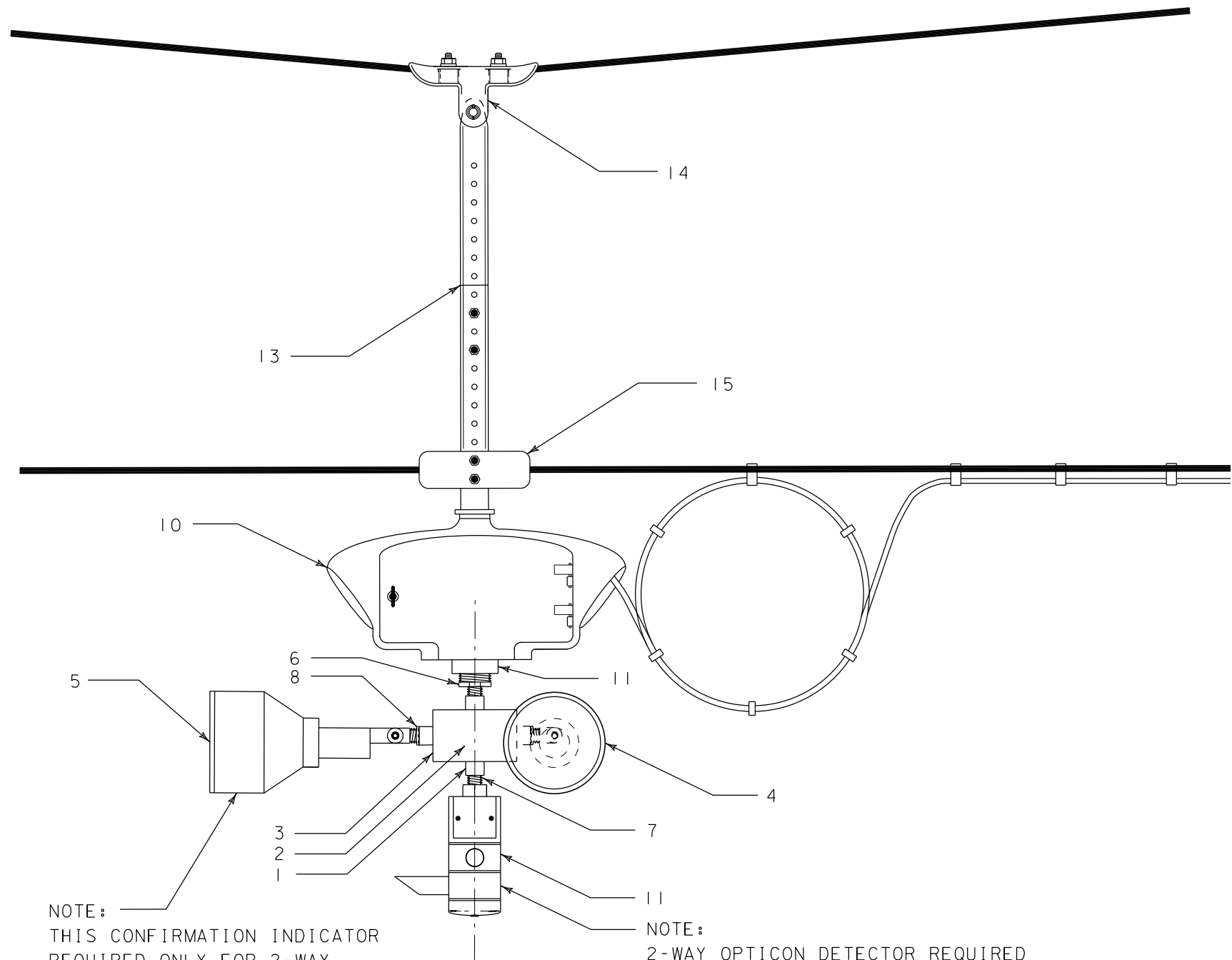
REVISIONS					
DATE	BY	DESCRIPTION	DATE	BY	DESCRIPTION

Collier County Traffic Operations
2885 South Horseshoe Drive
Naples, Florida 34104
Phone: (239) 252-8260
Fax: (239) 252-5868

COLLIER COUNTY
GROWTH MANAGEMENT DIVISION

EMERGENCY VEHICLE
DETECTION DETAILS

SHEET NO.
TSP-28



ITEM NO.	IDENTIFICATION
1	HAZARDOUS LOCATION OUTLET BOX - 21 CU.IN.
2	HAZARDOUS LOCATION OUTLET BOX COVER
3	RUBBER COVER GASKET
4	PAR 38 LAMP HOLDER AND COVER
5	PAR 38 WHITE LED FLOOD LAMP (90 WATT EQUIVALENT)
6	1-1/2" NPT TO 3/4" NPT REDUCER BUSHING
7	3/4" CLOSE NIPPLE (TYPICAL)
8	3/4" LOCKNUT (TYPICAL)
9	3/4" HOLE PLUG (AS NEEDED)
10	DISCONNECT WITH 2" SLIP TOP
11	1-1/2" NPS DISCONNECT HUB ASSEMBLY
12	DETECTOR UNIT (1 OR 2 WAY AS NEEDED)
13	TRI-STUD HANGER ASSEMBLY
14	SPAN WIRE CLAMP
15	STABILIZER BLOCK AND BAR

NOTES:

- ALL ELECTRICAL ITEMS, EXCEPT ITEM #11, SHALL BE CAST ALUMINUM, MALLEABLE IRON, POWDER COATED STEEL, GALVANIZED AND/OR STAINLESS STEEL.
- ITEM #1- OZ/GEDNEY FSX-1-50 OR APPROVED EQUIVALENT.
ITEM #4- MULBERRY CON-0-SHADE LAMP SHIELD OR APPROVED EQUIVALENT.
ITEM #6- PELCO PRODUCTS INC. GALVANIZED IRON REDUCER BUSHING PART NO. SE-0471-GLV OR APPROVED EQUIVALENT.
ITEM #11- PELCO PRODUCTS INC. 1-1/2" NPS DISCONNECT HUB ASSEMBLY PART NO. SE-0378-BLACK OR APPROVED EQUIVALENT.
- HANGER ASSEMBLY SHALL BE PLUMB.
- KNOCK OUT EMERGENCY VEHICLE DETECTOR WEEP HOLE BEFORE INSTALLING.
- EACH 1-WAY EMERGENCY CONFIRMATION LIGHT ASSEMBLY SHALL HAVE AN I.M.S.A. 19-1 OR 20-1 STRANDED 5 CONDUCTOR CABLE INSTALLED CONTINUOUS FROM THE CONTROLLER ASSEMBLY TO THE EMERGENCY CONFIRMATION LIGHT OUTLET BOX.
- EACH 2-WAY EMERGENCY CONFIRMATION LIGHT ASSEMBLY SHALL HAVE AN I.M.S.A. 19-1 OR 20-1 STRANDED 7 CONDUCTOR CABLE INSTALLED CONTINUOUS FROM THE CONTROLLER ASSEMBLY TO THE EMERGENCY CONFIRMATION LIGHT OUTLET BOX.
- CONFIRMATION INDICATOR SHALL BE L.E.D., NON-DIMMABLE, PAR 38 LAMP, 14 WATTS (90 INCANDESCENT WATTAGE COMPARISON), ANGLE BEAM 40 DEGREES, MANUFACTURED BY: TCP, PART NUMBER: LED14P3830KFL OR APP

NOTE:
THIS CONFIRMATION INDICATOR
REQUIRED ONLY FOR 2-WAY
INSTALLATION.

NOTE:
2-WAY OPTICON DETECTOR REQUIRED
ONLY FOR 2-WAY INSTALLATION.

TYPICAL SPAN WIRE MOUNTED
EMERGENCY VEHICLE DETECTOR
WITH CONFIRMATION LIGHT DATAIL.

NOT TO SCALE

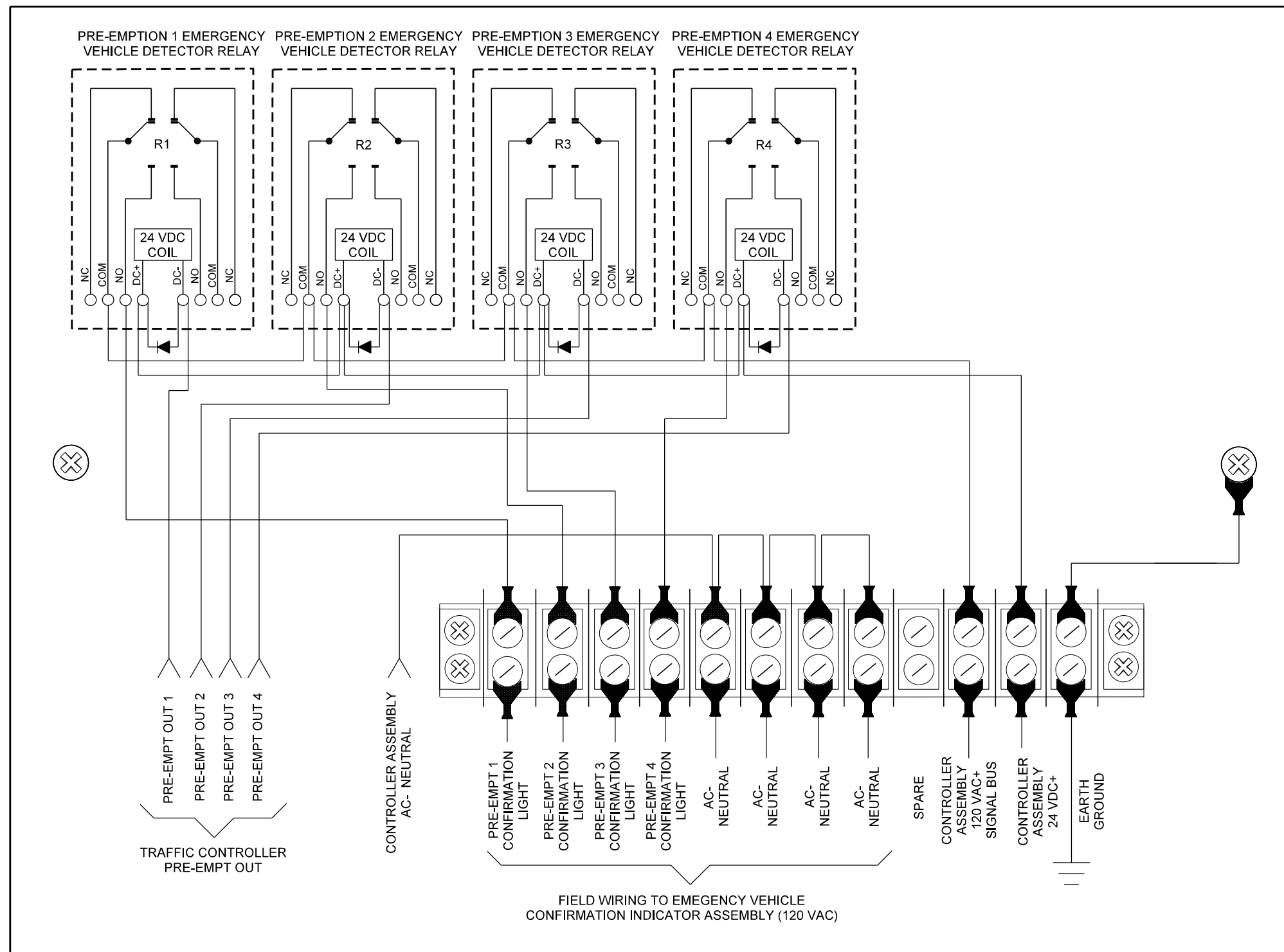
REVISIONS					
DATE	BY	DESCRIPTION	DATE	BY	DESCRIPTION

Collier County Traffic Operations
2885 South Horseshoe Drive
Naples, Florida 34104
Phone: (239) 252-8260
Fax: (239) 252-5868

COLLIER COUNTY
GROWTH MANAGEMENT DIVISION

**EMERGENCY VEHICLE
DETECTION DETAILS**

SHEET
NO.
TSP-29



NOTES:

1. EACH NEW TRAFFIC SIGNAL CABINET INSTALLED OR SUPPLIED SHALL INCLUDE A PREEMPTION CONFIRMATION LIGHT RELAY INTERFACE PANEL.
2. EACH EMERGENCY CONFIRMATION INDICATOR ASSEMBLY SHALL HAVE A I.M.S.A. 19-1 OR 20-1 STRANDED 5 AND/OR 7 CONDUCTOR CABLE INSTALLED CONTINUOUS FROM THE CONTROLLER ASSEMBLY TO THE EMERGENCY CONFIRMATION INDICATOR OUTLET BOX.
3. RELAY SHALL BE AN OMRON DPDT, MODEL NUMBER LY2-DC24, OR APPROVED EQUIVALENT.
4. INSTALL A DIODE (IN4004 OR EQUIVALENT) ACROSS THE INPUT TO EACH ELECTROMECHANICAL RELAY.

PREEMPTION CONFIRMATION LIGHT RELAY INTERFACE PANEL DETAIL.

NOT TO SCALE

REVISIONS					
DATE	BY	DESCRIPTION	DATE	BY	DESCRIPTION



Collier County Traffic Operations
2885 South Horseshoe Drive
Naples, Florida 34104
Phone: (239) 252-8260
Fax: (239) 252-5868

**COLLIER COUNTY
GROWTH MANAGEMENT DIVISION**

**EMERGENCY VEHICLE
DETECTION DETAILS**

SHEET
NO.

TSP-30