



The Architectural Color Charts depicted in this brochure offer a general idea of which colors are subject to the restrictions and limitations of the LDC, based on hue, lightness, and saturation.

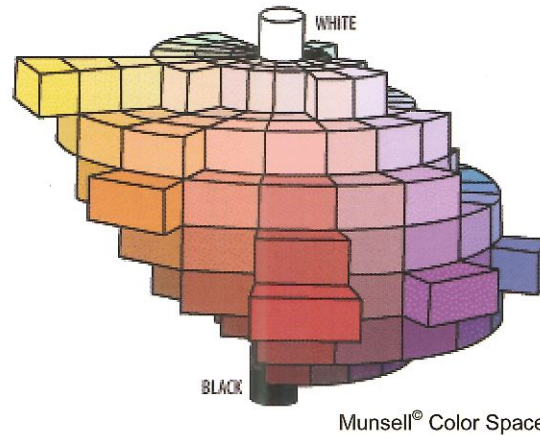
Each of the Architectural Color Charts are examples of four different lightness levels (3, 5, 7 and 8) in the three dimensional color space.

Each of the four charts depict 20 different hues from left to right (red, orange, green-yellow, green, blue-green, blue, purple-blue, purple, red-purple, and back to red.)

The vertical numbered scale represents the amount of color saturation, from 0 (grays) to 12 or 14, depending upon how vivid a color can become.

**IMPORTANT NOTICE:**

Due to the limitations of the color press process, the hues within each of the color charts depicted in this brochure are not an accurate representation of the County's adopted architectural color charts .



The adopted Architectural Color Charts can be consulted in person at the following address:



Growth Management Division  
 Planning and Regulation  
 Land Development Services Department  
 2800 North Horseshoe Drive  
 Naples, FL 34104  
**239-252-2400**  
 E-FAX: 239-252-3990



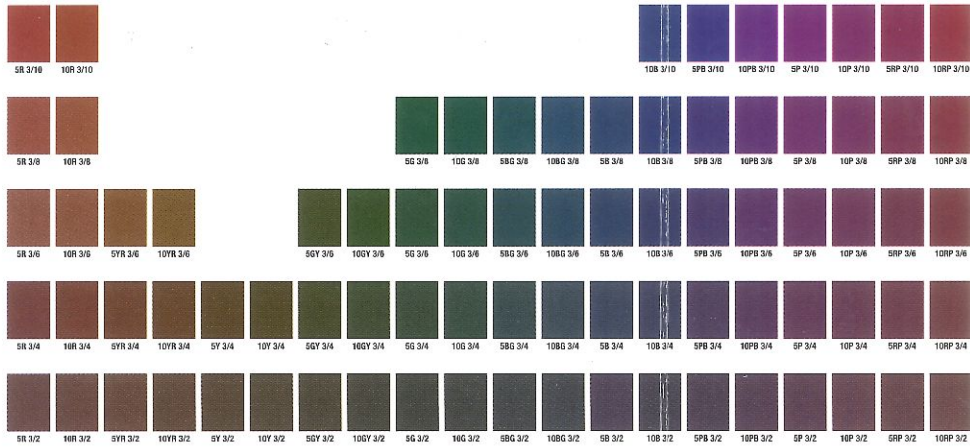
**ARCHITECTURAL  
 COLOR CHARTS®**

The purpose of the Collier County Architectural and Site design standards is to supplement existing development criteria in order to complement, enhance and enrich the urban fabric of our County with an abundant variety of architecture. Exterior building colors and materials contribute significantly to the visual impact of buildings in our community.

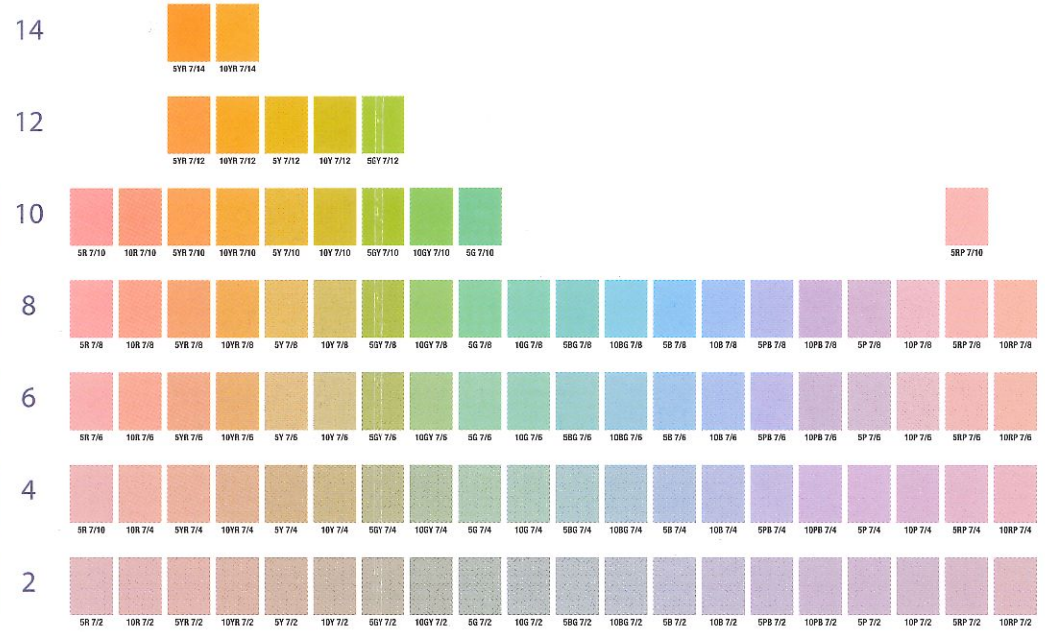
The Collier County Land Development Code (LDC) states that "colors and materials must be well designed and integrated into a comprehensive design style for the project."

This brochure is intended to provide the design professional and development community with a visual and user-friendly tool when selecting exterior building colors, and to help determine if the color selections are subject to the standards and limitations of the LDC.

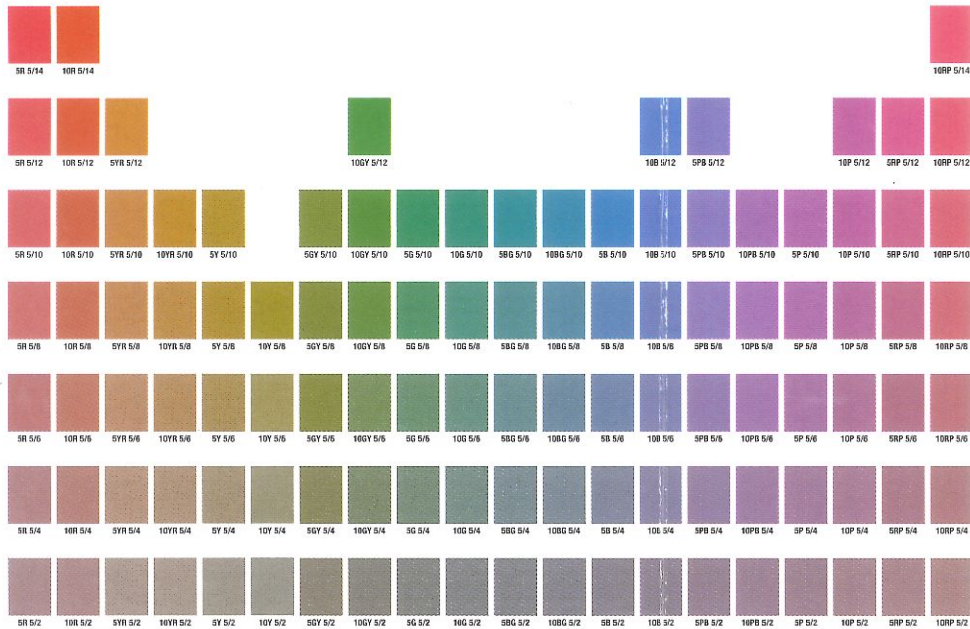
## Lightness Level 3 Chart



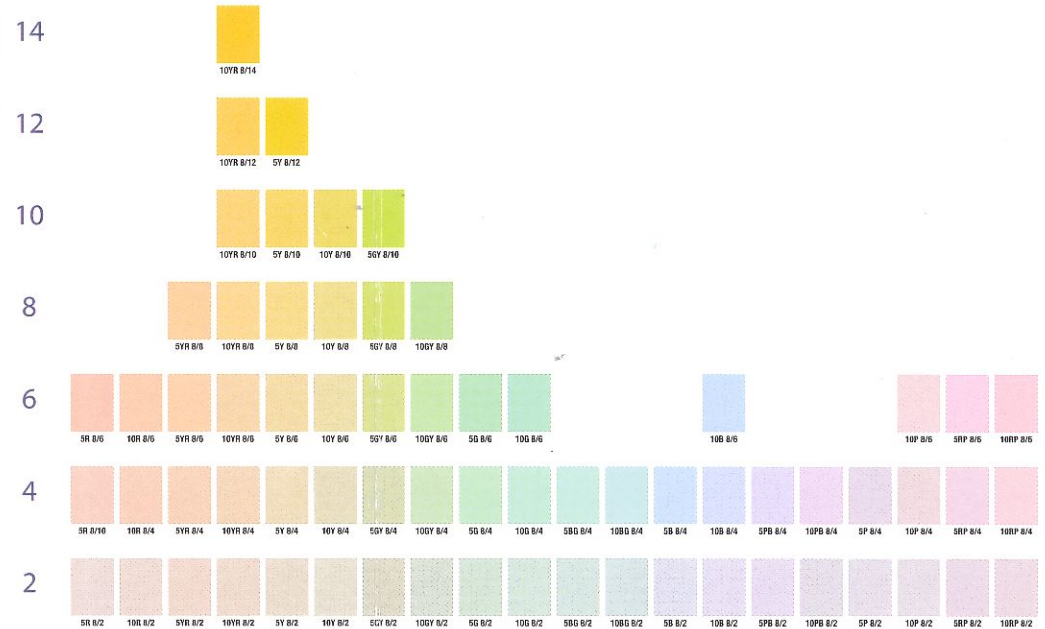
## Lightness Level 7 Chart



## Lightness Level 5 Chart



## Lightness Level 8 Chart



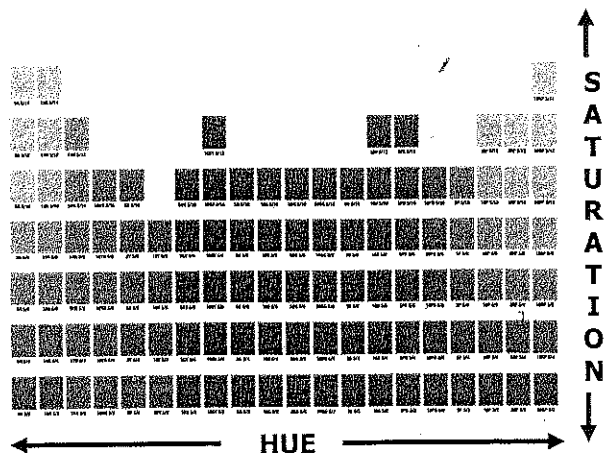


## USING THE ARCHITECTURAL COLOR CHARTS<sup>®</sup>

The Architectural Color Charts are examples of four different lightness levels (3, 5, 7 and 8) in the three dimensional color space. Level 3 chart being the darkest color chart, level 8 chart the lightest.

Each of the four charts depict, from left to right, 20 different hues (red, orange, green-yellow, green, blue-green, blue, purple-blue, purple, red-purple, and back to red.)

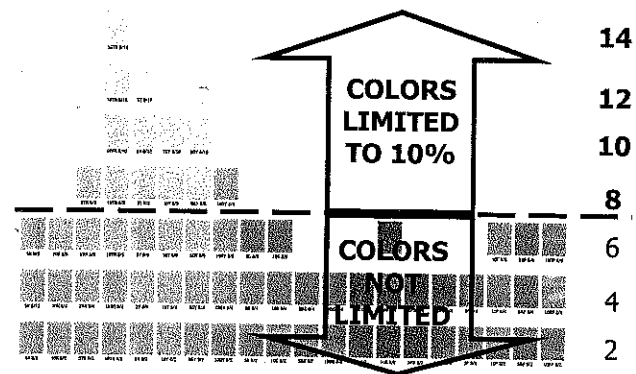
The vertical numbered scale represents the amount of color saturation, from 0 (grays) to 12 or 14, depending upon how vivid a color can be.



Example of a Collier County Architectural Color Chart

The current standards state that "exterior building colors above level 8 (saturation) or below level 3 (lightness) on the Collier County Architectural Color Charts<sup>®</sup> are limited to no more than 10 percent of a facade or the total roof area. Florescent colors are prohibited." (LDC Section 5.05.08.13.b.)

In other words, the LDC restricts very vivid colors (above level 8 on the vertical saturation scale), as well as colors that are very dark (colors darker than those depicted in the lightness level 3 chart of the Collier County Architectural Color Charts.)



The adopted Architectural Color Charts can be consulted in person at the following address:

Growth Management Division  
 Planning and Regulation  
 Land Development Services Department  
 2800 North Horseshoe Drive