



Comprehensive Everglades Restoration Plan Projects

**Collier County Town Hall Meeting
August 29, 2018**

**Jennifer Leeds, Section Administrator
Everglades Policy & Coordination Division, SFWMD**

Everglades Restoration

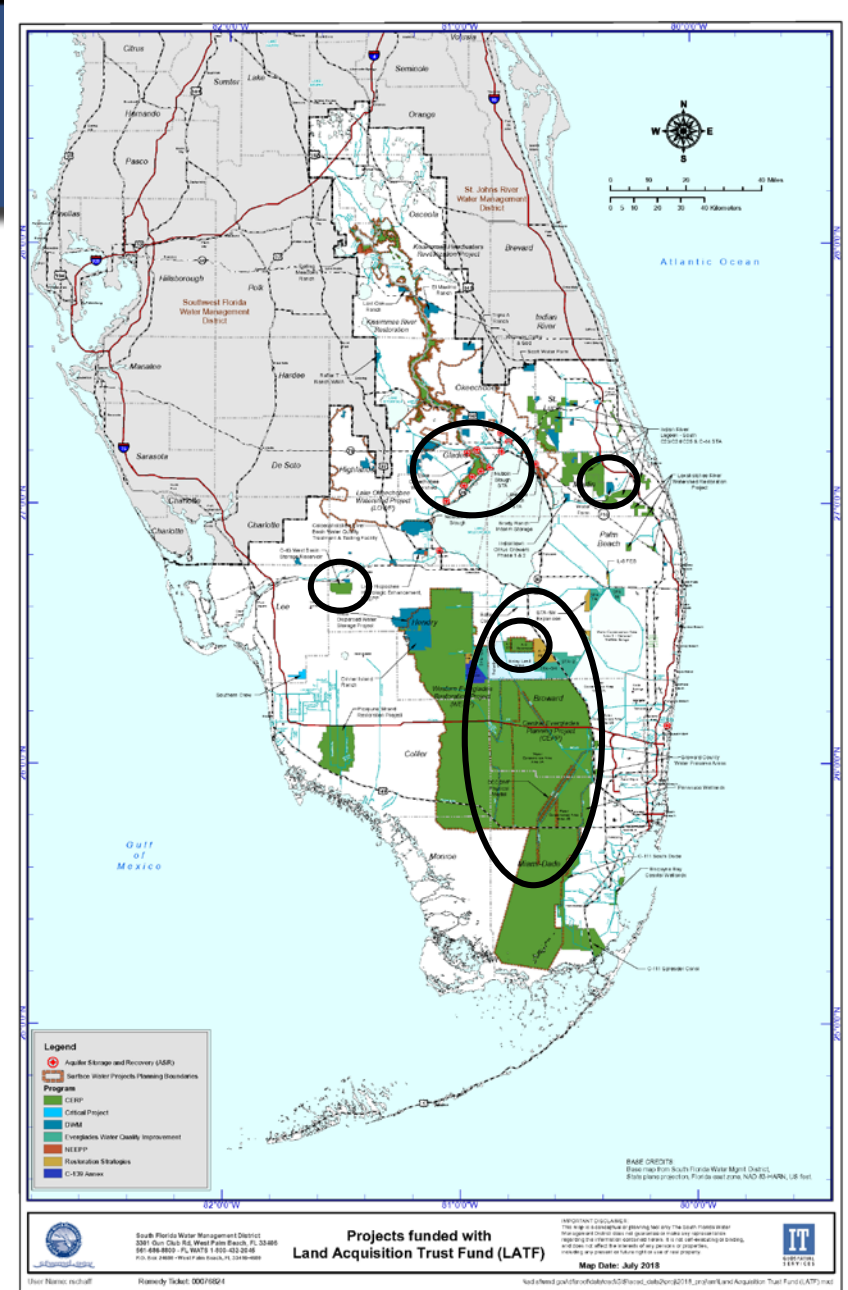
The Comprehensive Everglades Restoration Plan (CERP) was authorized by Congress in 2000 to restore, preserve, and protect the south Florida ecosystem

- 18 CERP projects being planned, designed or under construction
- Despite the progress of restoration, challenges still persist:
 - Damaging discharges to the northern estuaries
 - Environmental
 - Socioeconomic
 - Reduced flows to the Everglades
 - Dry outs
 - Impacts to fish and wildlife habitat
 - Reduced storage in the Everglades system

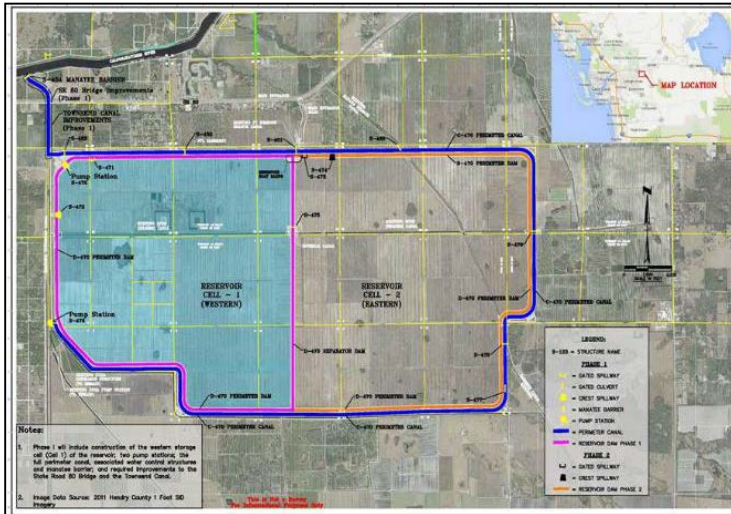


CERP Projects

- C-43
- C-44
- Lake Okeechobee Watershed Restoration Project
- Central Everglades Planning Project (CEPP)
- CEPP Post Authorization Change Report – EAA Reservoir



Caloosahatchee River (C-43) West Basin Storage Reservoir



- 10,500 acres - 170,000 ac-ft reservoir to improve the timing, quantity and quality of freshwater flows to the Caloosahatchee River and Estuary
 - Capture basin runoff and Lake Okeechobee releases
 - Dry season flows to improve estuary salinity levels
- Currently under construction
 - Construction of S-476 (195 cfs) Pump Station substantial completion – Fall 2018
 - S-470 Pump Station substantial completion - Spring 2022
 - Civil Works in final design

St. Lucie River C-44 Reservoir/STA



- S-404 Spillway Status is complete
- STA Status:
 - Construction Start: October 2014
 - Construction Finish: Spring 2019
- Pump Station Status:
 - Construction Start: April 2015
 - Construction Finish: Fall 2018
- Reservoir under construction complete Dec 2020



Lake Okeechobee Watershed Restoration Planning Project

Provides measurable benefits to Lake Okeechobee Ecology, the Northern Estuaries and reduces water supply cutbacks

Shallow Aboveground Storage

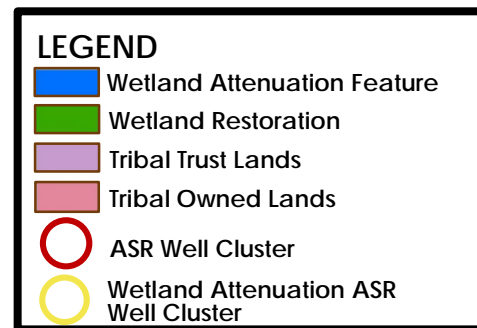
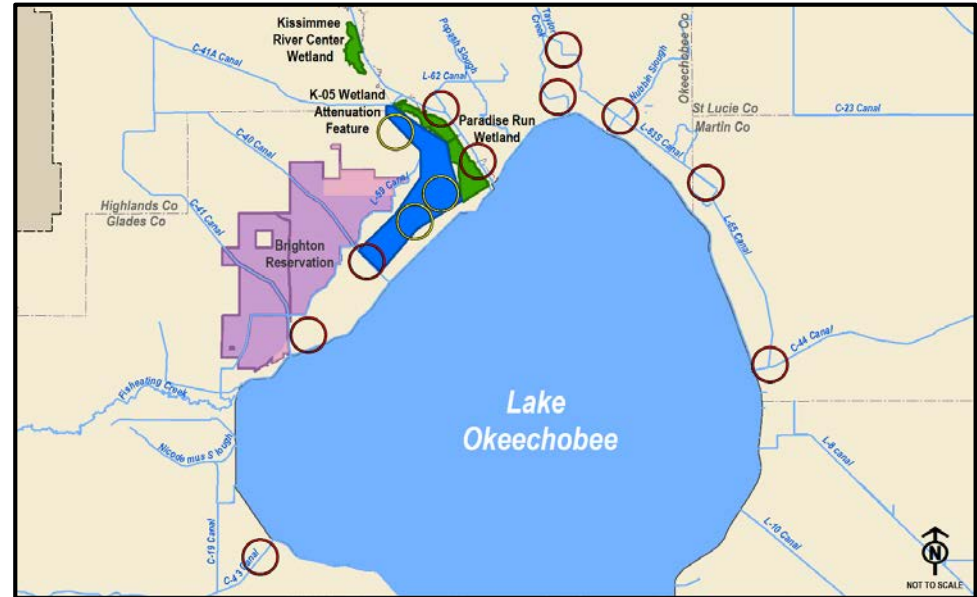
- ~12,500 acres
- ~43,000 acre-feet

Aquifer, Storage and Recovery

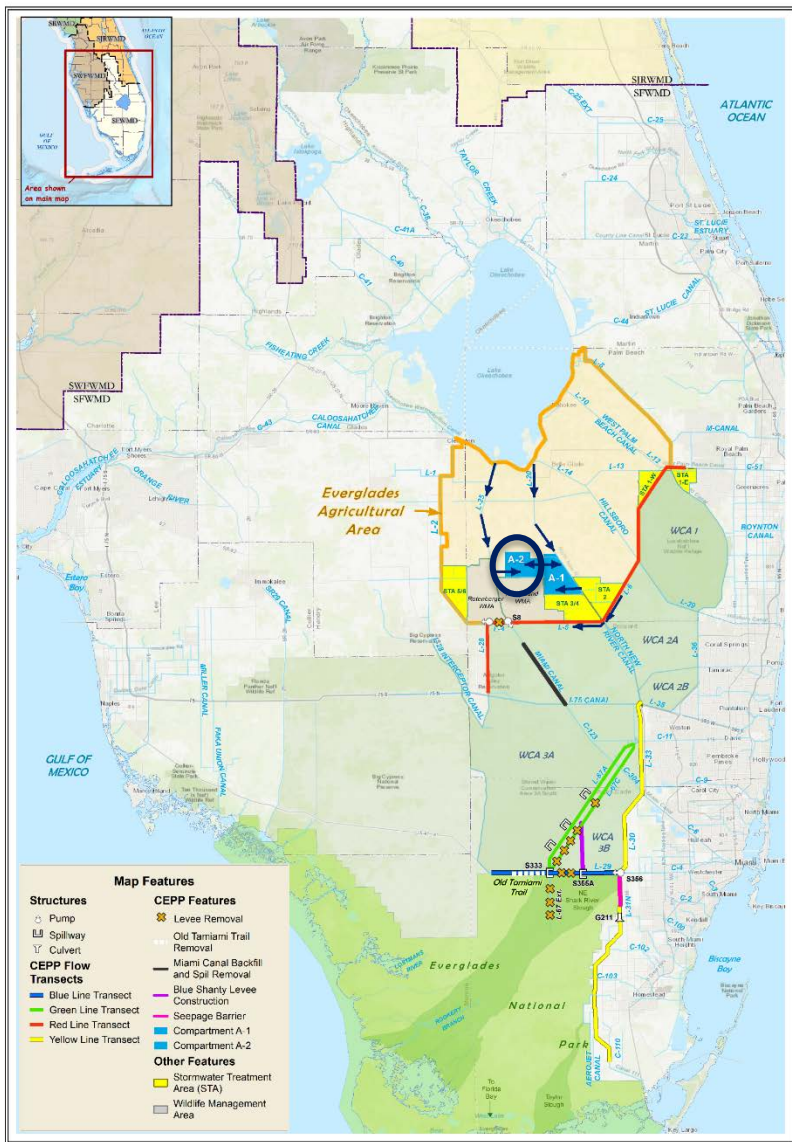
- 80 ASR Wells
- 448,000 acre-feet per year

Wetland Restoration

- Kissimmee River Center: 1,200 acres
- Paradise Run: 4,100 acres

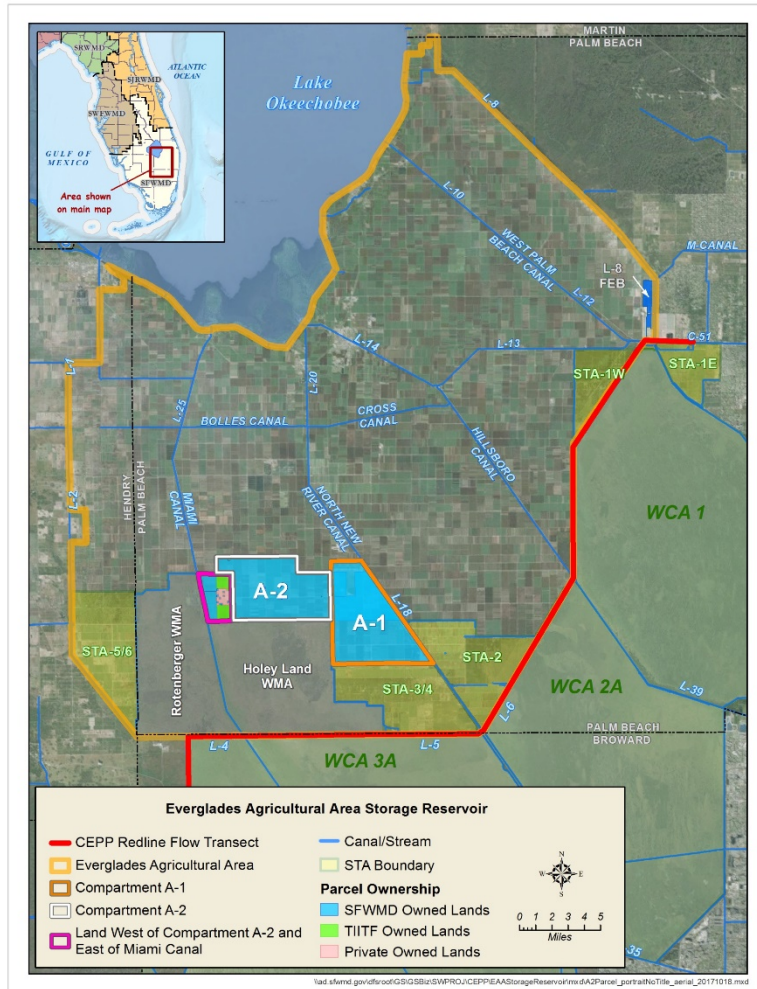


Central Everglades Planning Project



- Authorized in the 2016 Water Infrastructure Improvements for the Nation (WIIN) Act
- Provides the first increment of restoration in the central Everglades:
 - Reduces damaging discharges to the northern estuaries
 - Provides ~210K ac-ft of additional flow to the central Everglades on an average annual basis
- Opens the central part of the system to allow for additional flow south
- Everglades Agricultural Area Storage Reservoir Feasibility Study
 - Includes the A-2 component

Everglades Agricultural Area Storage Reservoir Feasibility Study



- Continue to improve the quantity, quality, timing and distribution of water flows to the Northern Estuaries and Central Everglades
- Meet applicable water quality standards
- Increases flows to approximately 370,000 ac-ft (average annual)
- Reservoir:
 - 240,000 acre-feet storage
 - 10,500 acres, 23 feet deep
- Stormwater Treatment Area:
 - 6,500 acres
- Canal Conveyance in Miami and North New River Canals
- July 11, 2018 – ASA(CW) submitted the report to Congress

Restoration Projects are the key to solving estuary discharges

Short Term:

- Dispersed Water Management (DWM) Projects
 - Public/private partnerships
 - Public Lands
- Estuary Protection Wells
- Temporary Pumps
- Temporary Deviations
- Herbert Hoover Dike Rehabilitation
- Lake Okeechobee Regulation Schedule Restudy
- CERP C-43 Reservoir
- CERP C-44 Reservoir and STA

Long Term:

- CERP Lake Okeechobee Watershed Restoration Project
 - Above ground storage
 - Aquifer Storage and Recovery Wells
- CERP EAA Reservoir – CEPP PACR
- CERP C23/C24 North and South Reservoir and STA
- NEEPP Water attenuation and treatment projects
 - Lakeside Ranch and Brady Ranch
- NEEPP Estuary Protection Wells
- NEEPP Aquifer Storage and Recovery Wells



Discussion