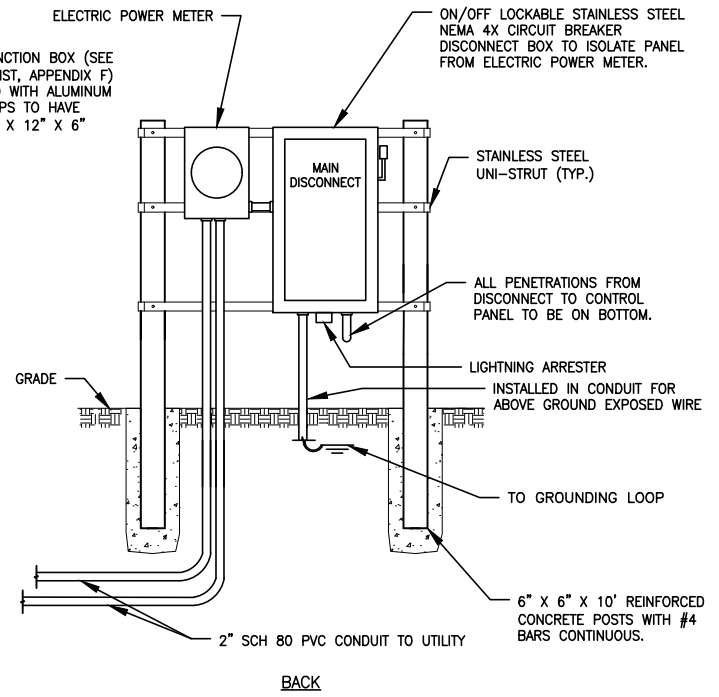


PUMP STATION CONTROL PANEL DETAIL - FRONT ELEVATION

SCALE: 1" = 4'-0"

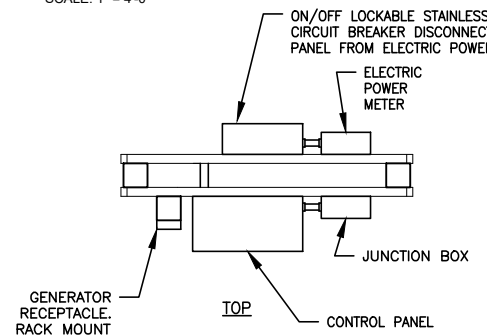


PUMP STATION CONTROL PANEL DETAIL - BACK ELEVATION

SCALE: 1" = 4'-0"

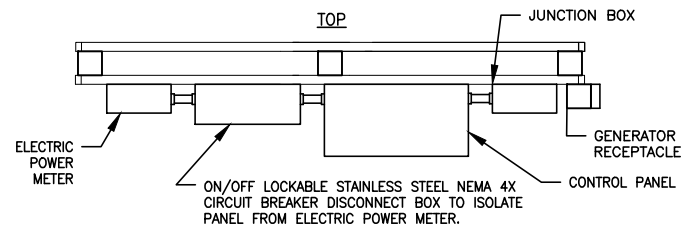
NOTES:

1. #10 STRAND MINIMUM FROM CONTROL PANEL TO J-BOX.
2. LIGHTNING ARRESTER (SEE COUNTY APPROVED PRODUCT LIST, APPENDIX F) MUST BE INSTALLED EXTERNALLY ON LOAD SIDE OF DISCONNECT BETWEEN DISCONNECT AND MAIN BREAKER. THE PENETRATION THROUGH THE DISCONNECT MUST BE MADE BELOW THE WORKING MECHANISM OF THE DISCONNECT.
3. PUMP CONTROL PANEL (SEE COUNTY APPROVED PRODUCT LIST, APPENDIX F) WITH ALL COMPONENTS FOR OPERATING TWO PUMPS AND LIQUID LEVEL REGULATORS; GENERATOR RECEPTACLE AND ANGLE ADAPTER (SEE COUNTY APPROVED PRODUCT LIST, APPENDIX F) AND NEMA 4X STAINLESS STEEL ENCLOSURE.
4. SEE DETAIL WW-17 FOR ANTENNA MOUNT DETAIL.
5. GROUND WIRE FROM SERVICE SHALL BE INSTALLED IN SCH 80 PVC CONDUIT.
6. ALL CONDUIT SHALL BE SCH 80 PVC
7. GENERATOR RECEPTACLE AND ANGLE ADAPTER (SEE COUNTY APPROVED PRODUCT LIST, APPENDIX F).
8. GENERATOR RECEPTACLE TO BE FIELD LOCATED w/ WASTEWATER COLLECTION STAFF (239) 252-2600



PUMP STATION CONTROL PANEL DETAIL - PLAN VIEW

SCALE: 1" = 4'-0"



SINGLE SIDE ALTERNATE - PLAN VIEW

SCALE: 1" = 4'-0"

PUMP STATION CONTROL PANEL DETAIL

REVISION DATE:
JULY 2018



SHEET NO.
WW-9