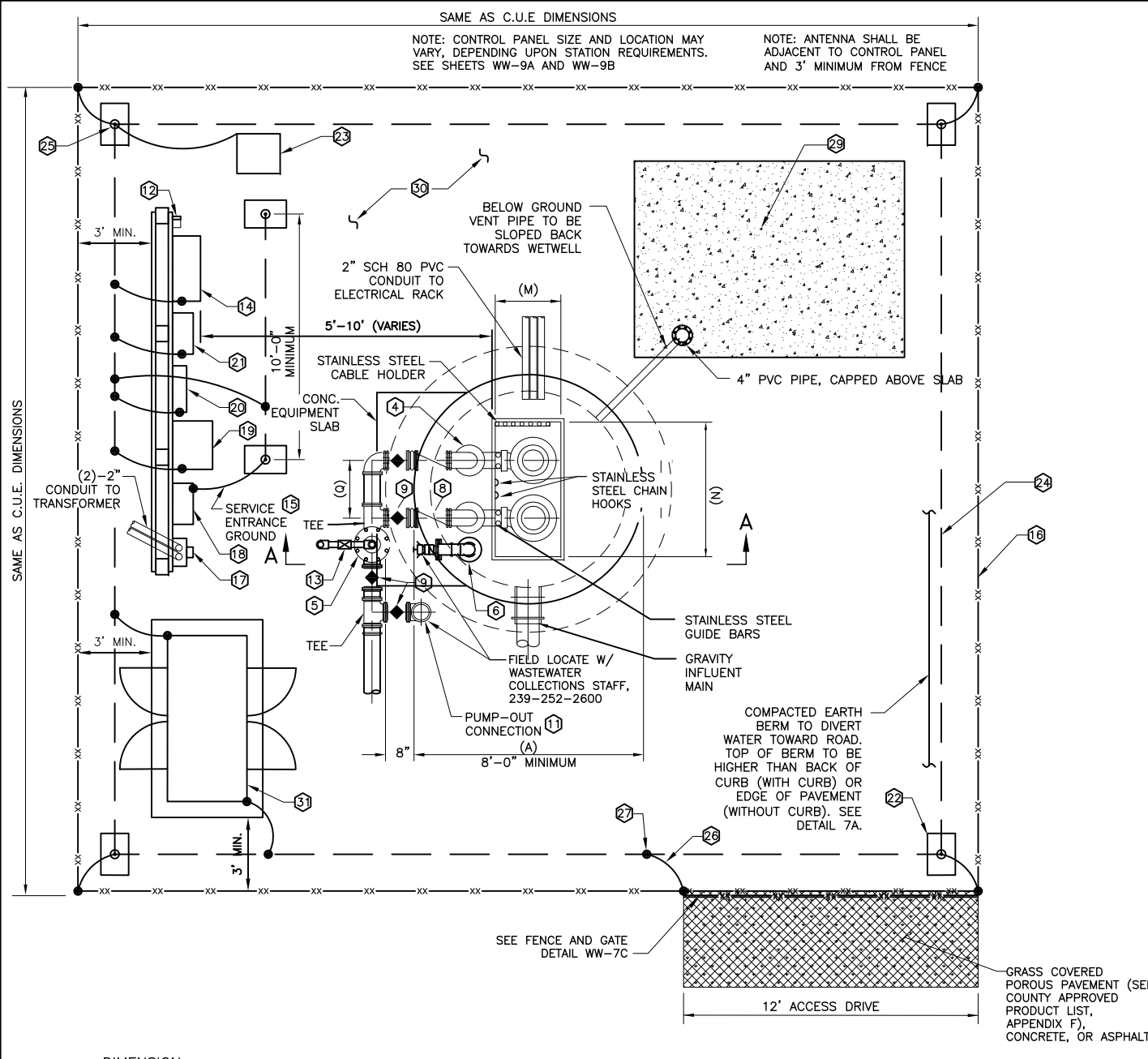


EQUIPMENT SPECIFICATIONS

MARK

- 1 NOT USED
- 2 NOT USED
- 3 NOT USED
- 4 ALL PIPING IN THE WET WELL AND ABOVE GRADE SHALL BE HDPE. ALL HDPE FITTINGS SHALL BE MOLDED. CONNECTIONS TO FLANGED PIPING, VALVES, AND FITTINGS SHALL BE MADE WITH HDPE FLANGE ADAPTERS WITH STAINLESS STEEL BOLTING RINGS AND BOLTS. SEE SPECIFICATIONS SECTION 330502.
- 5 TAPPED STAINLESS STEEL BLIND FLANGE OR COMPANION FLANGE FOR ARV CONNECTION. PROVIDE STAINLESS STEEL BALL VALVE AND PIPE NIPPLES TO CONNECT TO ARV.
- 6 COMBINATION SUCTION PIPE AND WETWELL VENT WITH 4" STAINLESS STEEL QUICK-CONNECT COUPLING UNIT WITH 2-HANDLE STAINLESS STEEL LOCKING CAP. SEE SHEET WW-7A FOR DETAIL.
- 7 NOT USED
- 8 CHECK VALVE, (K") (SEE COUNTY APPROVED PRODUCT LIST, APPENDIX F)
- 9 PLUG VALVE (SEE COUNTY APPROVED PRODUCT LIST, APPENDIX F), COMPLETE WITH WRENCH
- 10 NOT USED
- 11 4" QUICK-COUPLING UNIT COMPLETE WITH 2-HANDLE STAINLESS STEEL LOCKING CAP ON DUCTILE IRON RISER. PLACE INSIDE METER BOX FLUSH WITH FINISHED GRADE.
- 12 GENERATOR RECEPTACLE TO BE FIELD LOCATED w/ WASTEWATER COLLECTION STAFF AT (239)-252-2600
- 13 2" AIR RELEASE VALVE EQUIPPED WITH ONE WAY CHECK VALVE (SEE COUNTY APPROVED PRODUCTS LIST, APPENDIX F) MOUNTED ON 2" STAINLESS STEEL PIPING.
- 14 PUMP CONTROL PANEL: SEE TECHNICAL SPECIFICATIONS SECTION 333200, 2.1.H. AND DETAILS WW-9A AND WW-9B, AS APPLICABLE.
- 15 ALL ELECTRICAL SERVICE TRANSFORMERS SHALL BE INSTALLED OUTSIDE OF PUMP STATION FENCE LINE
- 16 6' HIGH CHAIN LINK FENCE AS PER COUNTY STANDARDS. FENCE SHALL HAVE GREEN SLATS TO SCREEN PUMP STATION FROM VIEW.
- 17 POWER METER
- 18 SERVICE ENTRANCE CIRCUIT BREAKER DISCONNECT WITH PADLOCKABLE HINGE
- 19 AUTOMATIC TRANSFER SWITCH
- 20 PANELBOARD / MINI POWER ZONE AS REQUIRED
- 21 CIRCUIT BREAKER DISCONNECT WITH PADLOCKABLE HINGE
- 22 SEE GROUND TEST WELL DETAIL ON SHEET WW-9C FOR ADDITIONAL REQUIREMENTS (TYP.)
- 23 TELEMETRY ANTENNA, SEE WW-17. PROVIDE NEW ANTENNA LIGHTNING ROD, CONDUIT, AND DOWN CONDUCTOR PER DETAIL ON WW-17. ROUTE LIGHTNING ROD DOWN CONDUCTOR TO GROUND ROD AT BOTTOM OF TOWER. BOND GROUND ROD TO STATION GROUND MAT.
- 24 #4/0 BARE COPPER. SEE GROUND MAT DETAIL ON SHEET WW-9C FOR ADDITIONAL REQUIREMENTS (TYP.)
- 25 3/4" X 20" COPPER-CLAD GROUND ROD (TYP.)
- 26 EXOTHERMICALLY WELDED CONNECTION (TYP.)
- 27 #2 SOLID TINNED COPPER JUMPER (TYP.)
- 28 BOND FENCE POST. SEE FENCE POST/GATE BONDING DETAIL ON SHEET WW-9C FOR ADDITIONAL REQUIREMENTS (TYP.)
- 29 8' X 11' X 6" CONCRETE PAD FOR FUTURE ODOR CONTROL
- 30 GROUND SURFACE WITHIN PUMP STATION FENCE SHALL CONSIST OF <1" DIA STONE, 4" THICK, WITH GEOTEXTILE FILTER FABRIC
- 31 STANDBY DIESEL GENERATOR, SUB BASE FUEL TANK, AND CONCRETE PAD. SEE TECHNICAL SPECIFICATIONS SECTION 263213



SAME AS C.U.E DIMENSIONS

NOTE: CONTROL PANEL SIZE AND LOCATION MAY VARY, DEPENDING UPON STATION REQUIREMENTS. SEE SHEETS WW-9A AND WW-9B

NOTE: ANTENNA SHALL BE ADJACENT TO CONTROL PANEL AND 3' MINIMUM FROM FENCE

SAME AS C.U.E. DIMENSIONS

DIMENSION TABLE

(A)	WETWELL INSIDE DIAMETER	
(M)	WETWELL HATCH OPENING	
(N)	WETWELL HATCH OPENING	
(O)	SEPARATION OF DISCHARGE RISER PIPING	

NOTE: CONFIGURATION OF PUMP STATION COMPONENTS MAY BE MIRRORED FROM THAT SHOWN BUT MUST OTHERWISE CONFORM TO THIS DETAIL, UNLESS AN ALTERNATE CONFIGURATION IS APPROVED BY UTILITY DEVIATION REVIEW.

COMMUNITY PUMP STATION WITH GENERATOR DETAIL - PLAN

NTS

REVISION DATE:

JULY 2018



SHEET NO.

WW-8A