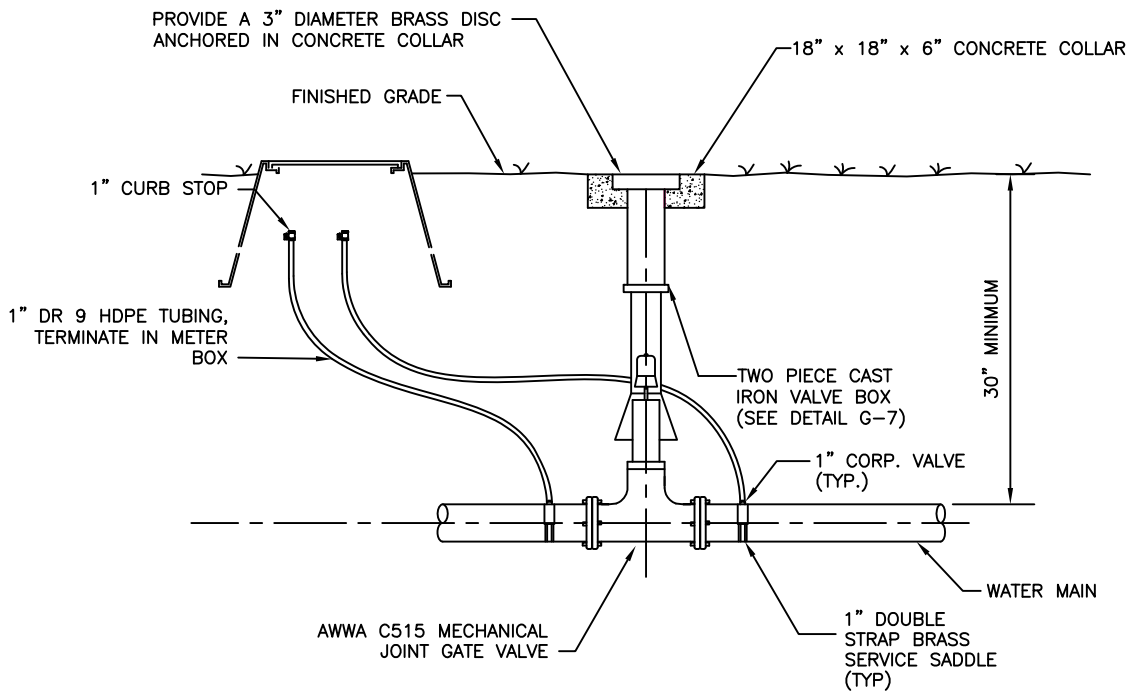


NOTES:

1. WHERE BI-DIRECTIONAL FLOW DOES NOT OCCUR PLACE LEAK DETECTION ASSEMBLY AT UPSTREAM VALVE LOCATION AS SHOWN.
2. PLACE METER BOX AS FAR FROM NEARBY ROADWAY AS PRACTICABLE.



**SUBAQUEOUS WATER MAIN VALVE
DETAIL**
NTS

MAY 2018



SHEET NO.
G-9A