

DIMENSION TABLE

(A)	WETWELL INSIDE DIAMETER	
(B)	DISTANCE B/W WETWELL FLOOR AND TOP OF DISCH. CONNECTION	
(C)	TOP OF WETWELL ELEVATION	
(D)	INFLUENT PIPE ELEV.	
(E)	HIGH WATER ALARM ELEV.	
(F)	LAG PUMP ON ELEV.	
(G)	LEAD PUMP ON ELEVATION	
(H)	ALL PUMPS OFF ELEVATION*	
(I)	TOP OF WETWELL FOOTING	
(K)	DIAMETER OF DISCHARGE RISER	
(L)	DIAMETER OF DISCHARGE FORCE MAIN	
(T)	THICKNESS OF FOOTING (MINIMUM 12")	

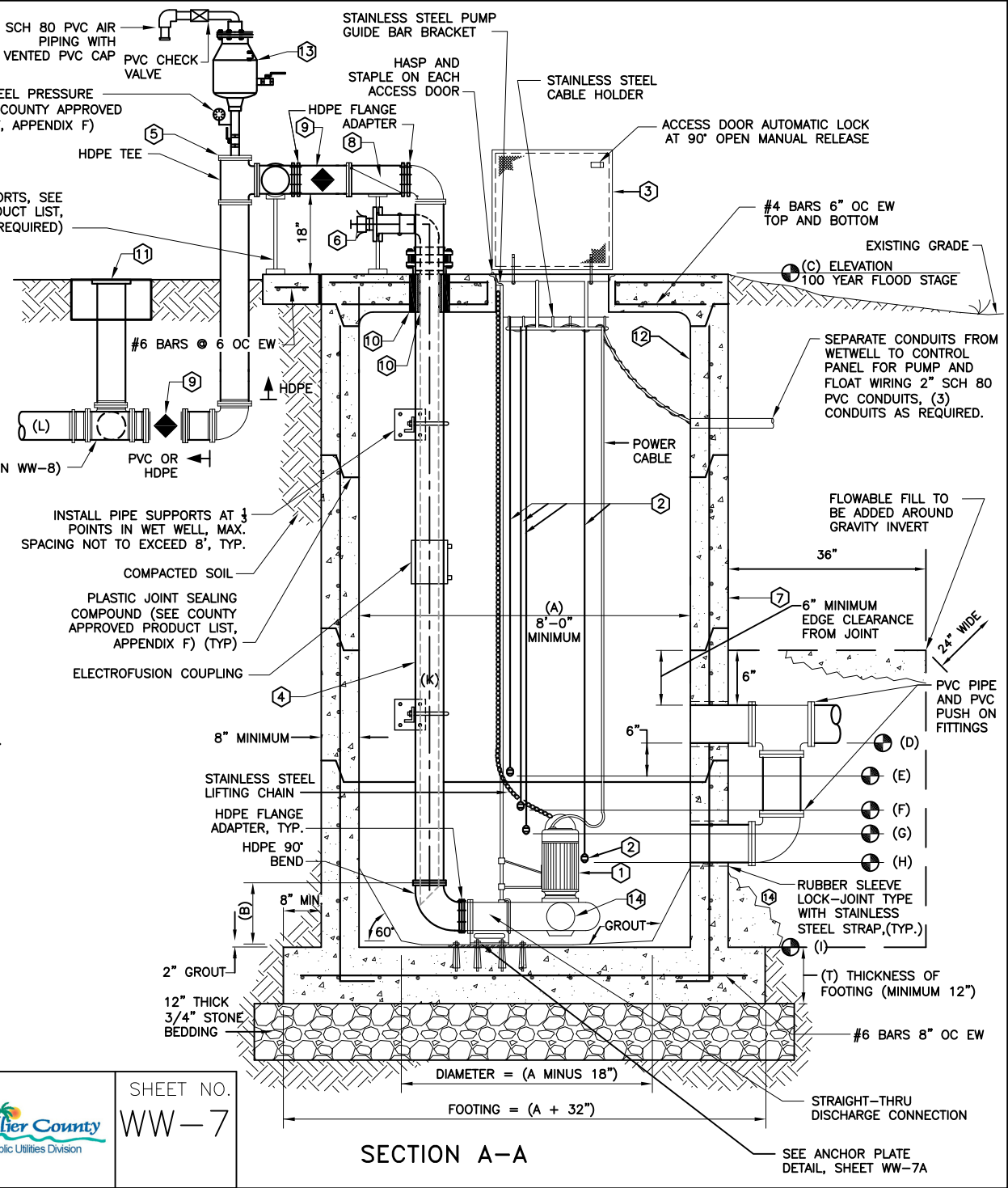
*SET ELEVATION H SO THAT THE MINIMUM SUBMERGENCE OF THE PUMPS IS 18", OR THE DEPTH RECOMMENDED BY THE MANUFACTURER, WHICHEVER IS GREATER

- MARK**
- ① DUPLEX _____ INCH DISCHARGE SUBMERSIBLE SEWAGE PUMPS EQUIPPED WITH 230/460 VOLT OR 480 VOLT MOTORS. EACH PUMP SHALL HAVE THE CAPACITY AND RANGE SET FORTH ON THIS SHEET AS THE "REQUIRED PUMP PERFORMANCE CURVE". VERIFY PUMP LOCAL VOLTAGE PRIOR TO PLACEMENT OF PUMP ORDER.
 - ② LIQUID LEVEL REGULATORS (SEE COUNTY APPROVED PRODUCT LIST, APPENDIX F), EACH PROVIDED WITH 60 FEET OF ELECTRICAL CABLE.
 - ③ ACCESS DOOR (SEE COUNTY APPROVED PRODUCT LIST, APPENDIX F) WITH HINGED AND HASP EQUIPPED COVER, TWO UPPER GUIDE HOLDERS, CHAIN HOLDERS AND CABLE HOLDERS.
 - ④ ALL PIPING IN THE WET WELL AND ABOVE GRADE SHALL BE HDPE. ALL HDPE FITTINGS SHALL BE MOLDED. CONNECTIONS TO FLANGED PIPING, VALVES, AND FITTINGS SHALL BE MADE WITH HDPE FLANGE ADAPTERS WITH STAINLESS STEEL BOLTING RINGS AND BOLTS. SEE SPECIFICATIONS SECTION 330502.
 - ⑤ TAPPED STAINLESS STEEL BLIND FLANGE OR COMPANION FLANGE FOR ARV CONNECTION. PROVIDE STAINLESS STEEL BALL VALVE AND STAINLESS STEEL PIPE NIPPLES TO CONNECT TO ARV.
 - ⑥ COMBINATION SUCTION PIPE AND WETWELL VENT WITH 4" STAINLESS STEEL QUICK CONNECT COUPLING UNIT WITH 2-HANDLE STAINLESS STEEL LOCKING CAP. SEE SHEET WW-7A FOR DETAIL. SUCTION PIPE TO BE SET 1' ABOVE WETWELL BOTTOM.
 - ⑦ WETWELL, REINFORCED CONCRETE PIPE CONFORMING TO TABLE II, WALL B OF ASTM C-76, O-RING JOINTS SHALL CONFORM TO ASTM C-443 WETWELL CONSTRUCTION. APPLY TWO COATS OF APPROVED BITUMINOUS OR EPOXY SEALER ON EXTERIOR SURFACES OF THE WETWELL.
 - ⑧ CHECK VALVE, (K*) (SEE COUNTY APPROVED PRODUCT LIST, APPENDIX F).
 - ⑨ PLUG VALVE (SEE COUNTY APPROVED PRODUCT LIST, APPENDIX F), (K*) COMPLETE WITH WRENCH.
 - ⑩ STAINLESS STEEL WALL PENETRATION ASSEMBLY, BLACK, SEE WW-7A. ALL PENETRATIONS SHALL BE CORED IN THE FIELD.
 - ⑪ 4" STAINLESS STEEL QUICK-COUPLING UNIT COMPLETE WITH 2-HANDLE STAINLESS STEEL LOCKING CAP ON DUCTILE IRON RISER. PLACE INSIDE METER BOX FLUSH WITH FINISHED GRADE.
 - ⑫ INTERIOR SHALL HAVE INTERNAL PROTECTION (SEE COUNTY APPROVED PRODUCT LIST, APPENDIX F), IN ACCORDANCE WITH TECHNICAL SPECIFICATION SECTION 099723.
 - ⑬ 2" AIR RELEASE VALVE EQUIPPED WITH ONE WAY CHECK VALVE (SEE COUNTY APPROVED PRODUCTS LIST, APPENDIX F) MOUNTED ON 2" SCH 40 316 STAINLESS STEEL PIPING.
 - ⑭ VOLUTE PORT WITH BOLTED COVER FOR FUTURE MIX FLUSH SYSTEM (ONE PUMP ONLY).

NOTE: ALL STAINLESS STEEL SHALL BE SERIES 316

STAINLESS STEEL PIPE SUPPORTS, SEE COUNTY APPROVED PRODUCT LIST, APPENDIX F (AS REQUIRED)

TEE WITH ISOLATION VALVE (SEE PLAN VIEW ON WW-8)
EQUIPMENT SPECIFICATIONS



**PUMP STATION
DETAIL - PROFILE**

REVISION DATE:
JULY 2018



SHEET NO.
WW-7

SECTION A-A

SEE ANCHOR PLATE
DETAIL, SHEET WW-7A