



COLLIER COUNTY HELICOPTER OPERATIONS

MEDFLIGHT

Welcome! Landing Zone (LZ) Training





Steve Adams

MedFlight Chief Pilot

239-252-5628

STEVENADAMS@colliergov.net

Training Syllabus

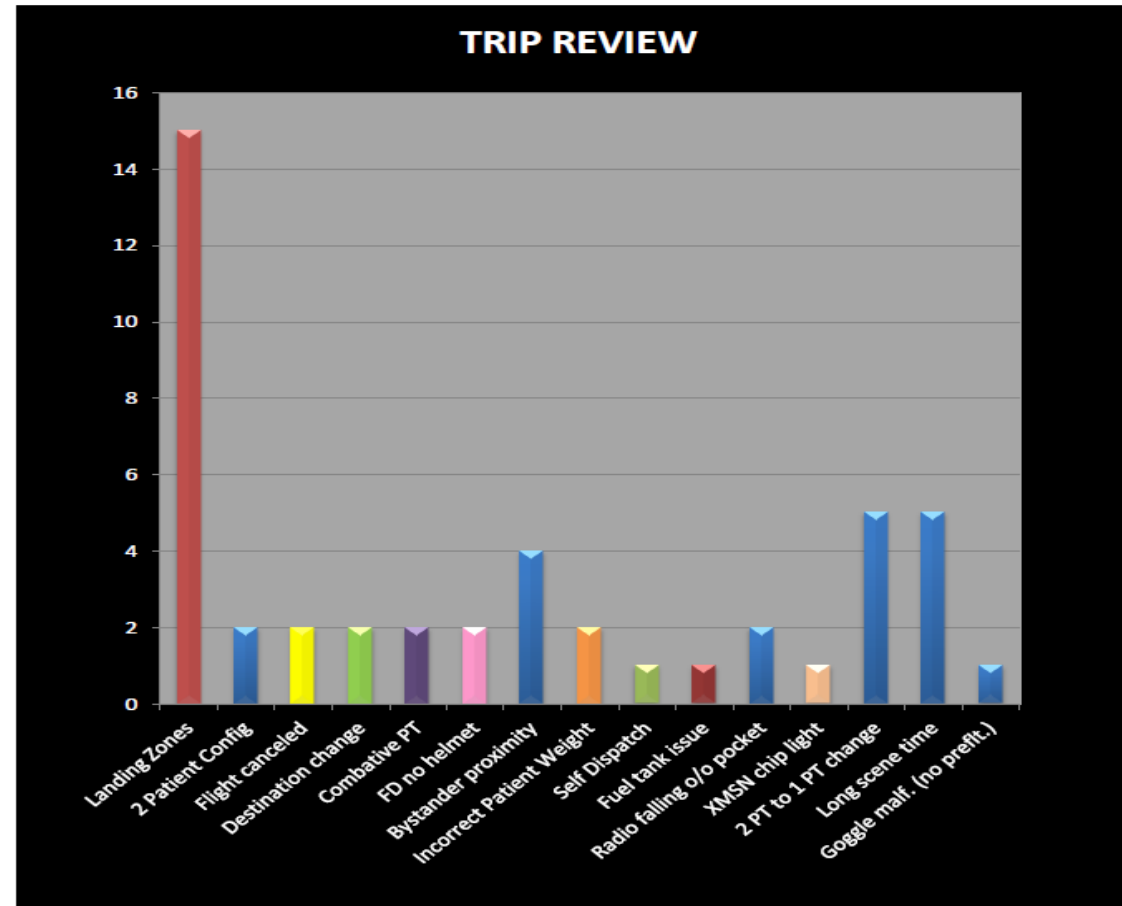
- **Importance**
 - Why is This Important?
 - Landing Zone Commander
 - Night Pre-Designated Landing Zone Program
- **Choosing Landing Zone**
 - LZ Procedures
 - Obstructions
 - Surface
 - Landing Zone Setup
- **Flight Planning**
 - Route of Flight
 - Weather
 - Risk Assessment
 - 2-Patient Configuration
 - Special Concerns
- **Approach/Departure Phases**
 - Ground Operations
- **Emergency Shut-Down**
- **Night Operations**
- **General Safety Rules**



COLLIER COUNTY HELICOPTER OPERATIONS

MEDFLIGHT Importance

Formalized Post-Flight Debrief -Analysis-





COLLIER COUNTY HELICOPTER OPERATIONS

MEDFLIGHT

Importance

SAFETY IS NOT AN ACCIDENT

Although landing a Helicopter at an emergency scene may appear routine, it is a highly demanding task intensive maneuver. People have and will continue to be injured during this critical type of landing. Our goal, with your help, is to continue our outstanding safety record at Collier County MedFlight.



COLLIER COUNTY HELICOPTER OPERATIONS

MEDFLIGHT Importance

**CHP Helicopter Crewmember
Critically Injured.
Flight Officer/Paramedic Tony
Stanley was struck by a main
rotor blade during a
rescue.....July 9, 2012**



**A medic for the Arizona
Department of Public Safety was
killed in Sedona, Ariz., after he
was struck by the rotor blade of a
rescue helicopter....October 15,
2008**



COLLIER COUNTY HELICOPTER OPERATIONS

MEDFLIGHT

Importance

LZ COMMANDER

SPECIFICALLY DEDICATED TO HELICOPTER THROUGHOUT ENTIRE OPERATION

- Landing zone briefing and additional radio communication if necessary
- Tasked with scene security before during and after landing zone operations
 - If available a tail guard should also be utilized while aircraft is on scene.



COLLIER COUNTY HELICOPTER OPERATIONS

MEDFLIGHT

Importance

Night Pre-DESIGNATED LZs

CCHO MEDFLIGHT - DESIGNATED LANDING ZONES

DURING DAYLIGHT HOURS, MEDFLIGHT MAY BE DISPATCHED TO ANY LOCATION MEETING

ESTABLISHED LANDING ZONE CRITERIA: 100X100, FREE OF OBSTACLES AND HAZARDS

***ALL OF I-75 IS CONSIDERED A DESIGNATED LANDING ZONE**

***ALL LANDING ZONES DESIGNATED FOR NIGHT ARE ALSO SUITABLE FOR DAY OPERATIONS**

2/13/2016

FIRE ZONE	EMS ZONE	CCBO DIST.	ID	DAY / NIGHT	GEOGRAPHIC LOCATION	GPS COORDINATES
NCFR	10	D4	ESEL	NIGHT	ESTATES ELEMENTARY SCHOOL (SPORTS FIELD SE OF BLDG)	26 20.37 / 081 32.85
NCFR	43	D1	FBCH	NIGHT	FIRST BAPTIST CHURCH / VANDERBILT DR (SE OF BLDG)	26 19.43 / 081 49.08
NCFR	10	D4	EGEN	NIGHT	E'S COUNTRY STORE (FIELD S OF STORE)	26 17.47 / 081 35.67
NCFR	42	D1	NCHNE	NIGHT	NCHNE HOSPITAL (BELLAIRE BAY DR. N OF HOSPITAL)	26 16.65 / 081 41.30
NCFR	44	D1	NCHN	NIGHT	NORTH COLLIER HOSPITAL (NEW HOSPITAL HELIPAD)	26 16.44 / 081 47.28
NCFR	44	D1	CREE	NIGHT	CREEKSIDE & GOODLETTE-FRANK (FIELD BY ARTHREX BLDG)	26 16.19 / 081 47.44
NCFR	10	D4	CPMS	NIGHT	CYPRESS PALM MIDDLE SCHOOL (SPORTS FIELD E OF BLDG)	26 15.98 / 081 31.57
NCFR	42	D1	WATE	NIGHT	WATER PARK ON LIVINGSTON RD (SPORTS FIELD E OF PARK)	26 15.85 / 081 44.78
NCFR	44	D1	ST44	NIGHT	FIRE STATION 44 (FIELD W STATION)	26 15.03 / 081 48.44
NCFR	46	D1	FBAC	NIGHT	FIRST BAPTIST ACADEMY (FIELD E OF ENTRANCE)	26 13.97 / 081 45.39
NCFR	46	D2	PRPR	NIGHT	PHYSICIANS REGIONAL PINE RIDGE	26 12.86 / 081 43.90
NCFR	40	D1	GLPR	NIGHT	GOODLETTE & PINE RIDGE (FIELD W OF SMIETSA)	26 12.83 / 081 47.48
NCFR	40	NP0	SGEL	NIGHT	SEAGATE ELEMENTARY SCHOOL (SPORTS FIELD S OF BLDG)	26 12.55 / 081 48.32
NCFR	24	D1	PAEL	NIGHT	POINCIANA ELEMENTARY SCHOOL (SPORTS FIELD W / BLDG)	26 10.89 / 081 46.23
CNFD	2	D1	PARK	NIGHT	HWY 41 & PARK SHORE DR (OPEN FIELD N OF PARK SHORE DR)	26 11.68 / 081 48.06
CNFD	1	NP0	FLEI	NIGHT	FLEISCHMANN PARK (FOOTBALL/SOCCER FIELD)	26 09.99 / 081 48.32
CNFD	1	NP0	NCH	NIGHT	NAPLES COMMUNITY HOSPITAL	26 09.06 / 081 47.87
CNFD	1	NP0	GVMJ	NIGHT	GULFVIEW MIDDLE SCHOOL (SPORTS FIELD)	26 08.65 / 081 47.86
CNFD	1	NP0	STAN	NIGHT	SAINT ANN SCHOOL (SPORTS FIELD)	26 08.24 / 081 47.94
GNFR	71	D2	ST71	DAY ONLY	FIRE STATION 71	26 13.60 / 081 38.00
GNFR	71	D2	BIEL	NIGHT	BIG CYPRESS ELEMENTARY SCHOOL (SPORTS FIELD)	26 13.57 / 081 48.35
GNFR	71	D4	PAEL	NIGHT	PALMETTO ELEMENTARY SCHOOL (FIELD AT ENTRANCE)	26 12.72 / 081 32.82
GNFR	70	D2	RITA	NIGHT	RITA EATON COMMUNITY PARK	26 11.67 / 081 42.77
GNFR	70	D2	GGMI	NIGHT	GOLDEN GATE MIDDLE SCHOOL (SPORTS FIELD SE OF BLDG)	26 10.59 / 081 42.71
GNFR	25	D7	MM90	NIGHT	I-75 MILE MARKER 90 ⁺	26 09.10 / 081 30.20
GNFR	24	NP0	MHQ	NIGHT	MEDFLIGHT HQ	26 08.86 / 081 46.68
GNFR	75	D3	CPEL	NIGHT	CALUSA PARK ELEMENTARY SCHOOL (SPORTS FIELD)	26 08.61 / 081 42.94
GNFR	22	D3	ALEL	NIGHT	AVALON ELEMENTARY SCHOOL (SOCCER FIELD)	26 06.45 / 081 45.83
GNFR	25	D3	PRCB	NIGHT	PHYSICIANS REGIONAL COLLIER BLVD	26 06.39 / 081 41.12
GNFR	23	D3	ELCP	NIGHT	EAGLE LAKES COMMUNITY PARK (SE SOCCER FIELD)	26 04.39 / 081 42.57
GNFR	23	D3	MAAM	NIGHT	MANATEE MIDDLE SCHOOL (SPORTS FIELD SE CORNER)	25 02.70 / 081 48.64
ICFD	90	D3	FIDD	NIGHT	FIDDLERS CREEK (FIELD N OF ENTRANCE)	26 01.35 / 081 42.02
ICFD	90	D3	CAPR	NIGHT	ISLE OF CAPRI FIRE STATION	25 59.06 / 081 43.66
IFFD	31	D6	SOCC	NIGHT	SOCCER FIELD (SR 28 AND JOHNSON RD.)	26 28.32 / 081 26.13
IFFD	31	D6	CORK	NIGHT	CORKSCREW RD. (BEND EAST TO NORTH)	26 27.10 / 081 33.88
IFFD	31	D6	IORC	NIGHT	IMMOKALEE OUTPATIENT REHAB CENTER (FIELD W BLDG)	26 26.66 / 081 26.00
IFFD	31	D6	ST31	NIGHT	IMMOKALEE EMS STATION 31 (PARK IN FRONT OF BASE)	26 26.04 / 081 26.97
IFFD	30	D8	ST30	NIGHT	IMMOKALEE EMS STATION 30	26 25.01 / 081 24.97
IFFD	30	D4	CARE	NIGHT	CAMP KEARS RD. & IMMOKALEE RD (FIELD SE OF INTERSEC)	26 22.47 / 081 23.86
IFFD	32	D4	AVEM	NIGHT	AVE MARIA (SOCCER FIELD W CORNER)	26 20.45 / 081 26.44
IFFD	32	D4	ARTH	NIGHT	ARTHREX BLDG (ON WELLS RD)	26 17.76 / 081 26.69
IFFD	30	D6	82LA1	NIGHT	SR 82 LANDING AREA1 .25 MILE	26 29.31 / 081 26.80
IFFD	30	D6	82LA2	NIGHT	SR 82 LANDING AREA2 .25 MILE	26 29.79 / 081 28.64
IFFD	30	D6	82LA3	NIGHT	SR 82 LANDING AREA3 .25 MILE	26 30.06 / 081 29.74
MIFD	50	D3	NCCB	DAY ONLY	NAPLES CRUISE CLUB	26 00.91 / 081 45.71
MIFD	50	D3	KMKY	NIGHT	MARCO ISLAND AIRPORT	26 00.00 / 081 40.50
MIFD	50	D7	KEEW	DAY ONLY	KEEWAYDIN ISLAND	25 59.50 / 081 45.13
MIFD	50	MIP0	MARC	NIGHT	MARCO ISLAND URGENT CARE	25 56.31 / 081 43.11
MIFD	50	MIP0	CAXA	DAY ONLY	CAXAMBAS ISLAND	25 50.67 / 081 48.79
OCFR	60	D7	MM50	NIGHT	I-75 MILE MARKER 50 ⁺	26 10.40 / 080 52.80
OCFR	60	D7	ST63	NIGHT	STATION 63	26 10.02 / 081 04.48
OCFR	60	D7	MM70	NIGHT	I-75 MILE MARKER 70 ⁺	26 10.00 / 081 12.60
OCFR	60	D7	MM80	NIGHT	I-75 MILE MARKER 80 ⁺	26 09.20 / 081 20.60
OCFR	60	D3	PORT	NIGHT	PORT OF ISLES (FIELDS W OF BRIDGE)	25 57.50 / 081 30.80
OCFR	60	D7	CARN	DAY ONLY	CARNESTOWN	25 54.41 / 081 21.91
OCFR	60	D7	OCHO	NIGHT	OCHOPEE FORESTRY HQ	25 53.99 / 081 19.25
OCFR	60	D7	OASI	NIGHT	OASIS RANGER STATION	25 51.45 / 081 02.05
OCFR	60	D7	EVER	NIGHT	EVERSLADES AIRPORT (XD1)	25 50.80 / 081 23.40
OCFR	60	D7	LULU	DAY ONLY	CAMP LULU KEY	25 50.11 / 081 30.56
OCFR	60	D7	RABB	DAY ONLY	RABBIT KEY	25 45.09 / 081 22.67
OCFR	60	D7	PAVI	DAY ONLY	PAVILLION KEY	25 41.88 / 081 21.34

•What about during day?

•Found in every truck and in CC protocols

•An updated landing zone list is always available at colliergov.net/MedFlight



COLLIER COUNTY HELICOPTER OPERATIONS

MEDFLIGHT

Choosing A Landing Zone

- During daylight operations, the LZ must meet the 100'x100' criteria clear of obstructions.
- During night operations, the use of the Pre-Designated Landing Zones is require
 - Always reference the 4 letter identifier identified as "ID" when requesting MedFlight
- Scene Calls- brief description of location i.e intersection or GPS coordinates in "Degrees decimal minutes" format is ideal.
- Review your zone to ensure you know where your night pre-designated LZ's are located and named

CCHO MEDFLIGHT - DESIGNATED LANDING ZONES

DURING DAYLIGHT HOURS, MEDFLIGHT MAY BE DISPATCHED TO ANY LOCATION MEETING ESTABLISHED LANDING ZONE CRITERIA: 100X100, FREE OF OBSTACLES AND HAZARDS

¹ALL OF I-75 IS CONSIDERED A DESIGNATED LANDING ZONE

²ALL LANDING ZONES DESIGNATED FOR NIGHT ARE ALSO SUITABLE FOR DAY OPERATIONS

8/23/2016

FIRE ZONE	EMS ZONE	CCSO DIST.	ID	DAY / NIGHT	GEOGRAPHIC LOCATION	GPS COORDINATES
NCFR	10	D4	ESEL	NIGHT ²	ESTATES ELEMENTARY SCHOOL (SPORTS FIELD SE OF BLDG)	26 20.37 / 081 32.85
NCFR	43	D1	FCH	NIGHT	FIRST BAPTIST CHURCH / VANDERBILT DR (S OF BLDG)	26 19.43 / 081 49.08
NCFR	10	D4	EGEN	NIGHT	E's COUNTRY STORE (FIELD S OF STORE)	26 17.47 / 081 35.67
NCFR	42	D1	NCHNE	NIGHT	NCH-NE HOSPITAL (BELLAIRE BAY DR. N OF HOSPITAL)	26 16.65 / 081 41.30
NCFR	44	D1	NCHN	NIGHT	NORTH COLLIER HOSPITAL (NEW HOSPITAL HELIPAD)	26 16.44 / 081 47.28
NCFR	10	D4	CPMS	NIGHT	CYPRESS PALM MIDDLE SCHOOL (SPORTS FIELD E OF BLDG)	26 15.98 / 081 31.57



COLLIER COUNTY HELICOPTER OPERATIONS

MEDFLIGHT

Choosing A Landing Zone

OBSTRUCTIONS

- Wires
- Trees
- Light Poles
- Buildings
- Vehicles
- Tree Stumps
- Rocks
- Construction Debris





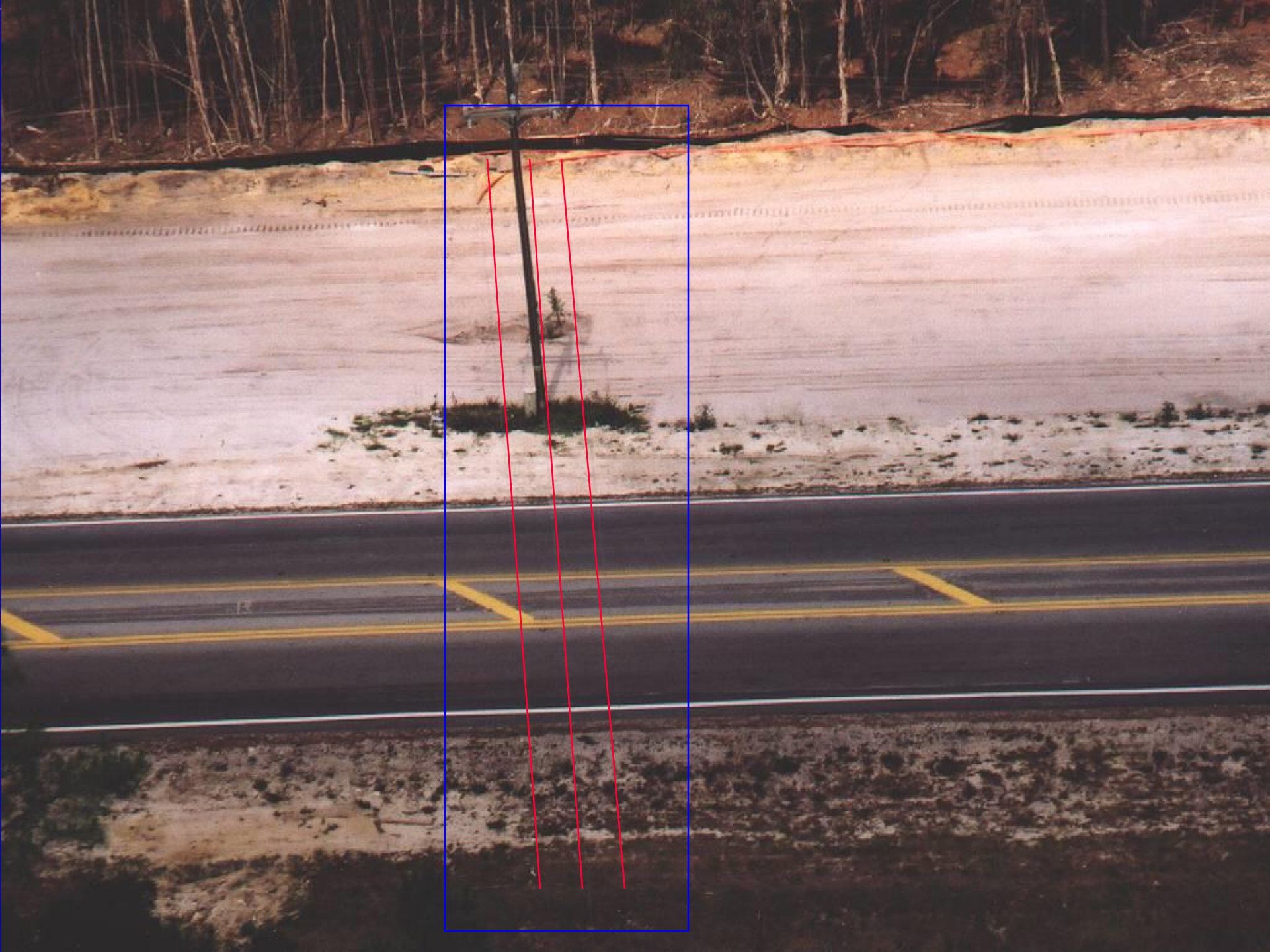
COLLIER COUNTY HELICOPTER OPERATIONS

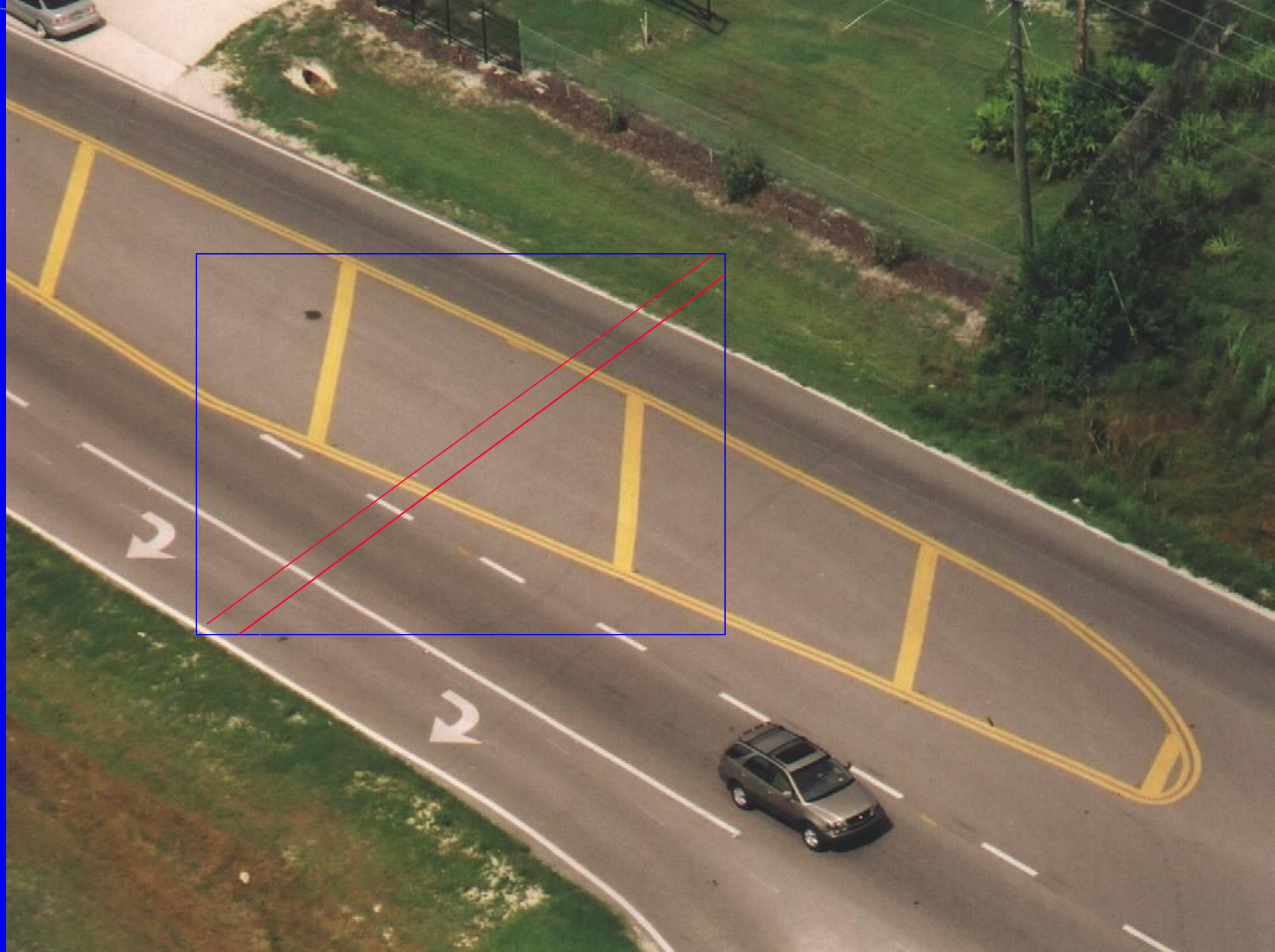
MEDFLIGHT

Choosing A Landing Zone

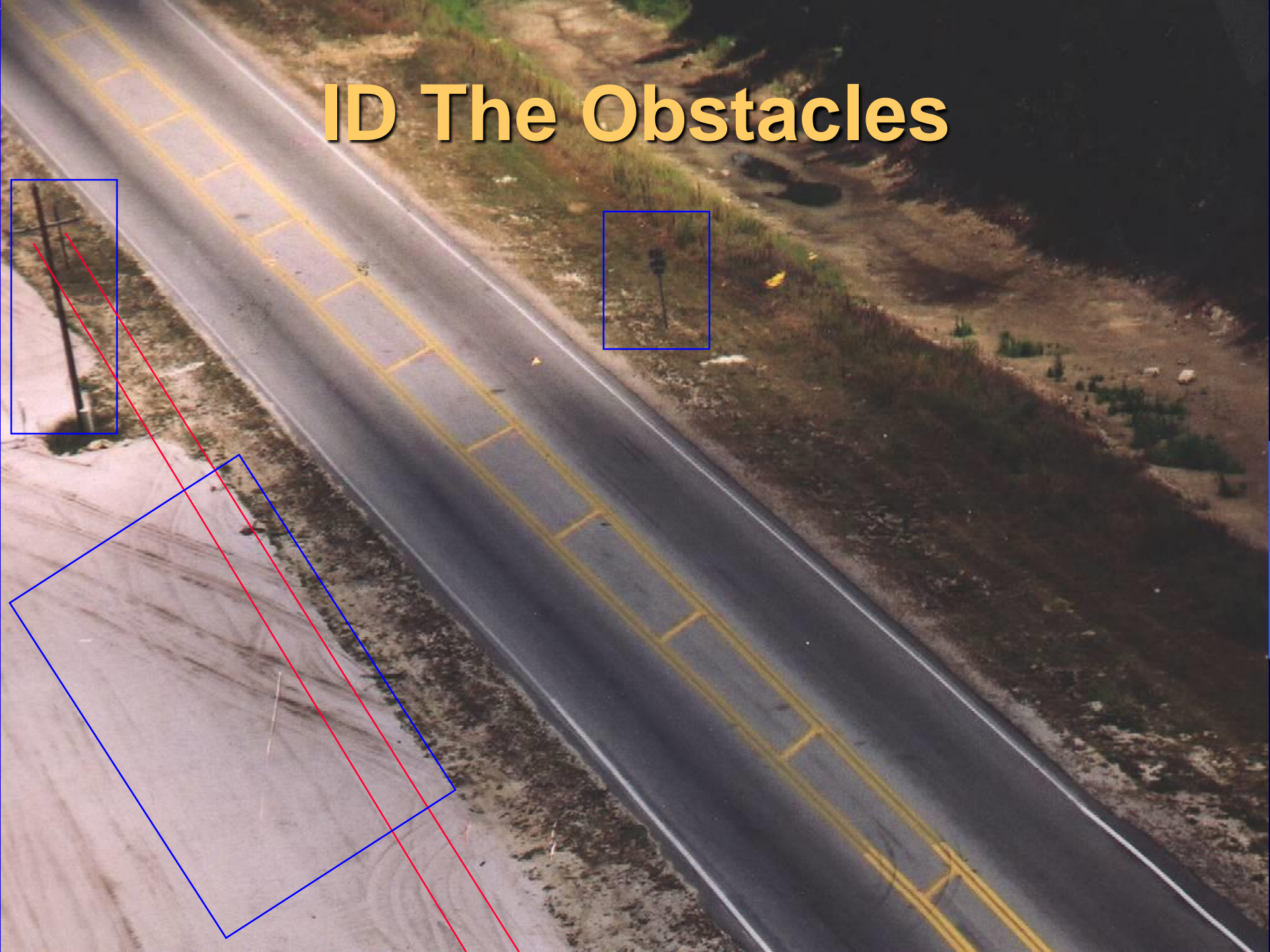
WIRES

- **Nearly invisible from the sky**
- **Look for wires crossing the LZ**
- **Visually confirm the direction of wires coming off every pole in the area**
- **Inform the MedFlight crew during Landing Zone briefing**





ID The Obstacles



Crash Powerlines

Empuriabrava





COLLIER COUNTY HELICOPTER OPERATIONS

MEDFLIGHT

Choosing A Landing Zone

SURFACE TYPES

- **BEST** - Concrete
- **SECOND** - Blacktop
- **THIRD** - Sod or Grass
- **FOURTH** - Compacted earth
lightly wetted
- Last choice is sand, dirt or brush area



COLLIER COUNTY HELICOPTER OPERATIONS

MEDFLIGHT

Choosing A Landing Zone

AREA

- **Avoid sandy dusty areas (unless you can wet the surface before arrival)**
- **Should be relatively level – Minimal slope**
- **Clear area**
 - **Clear of debris**
 - **Large rocks**
 - **Posts & Signs**
 - **Stumps**
 - **Vehicles**
 - **People**
 - **Animals**
 - **Hazards**

SLOPES

Incorrect



Correct



COLLIER COUNTY HELICOPTER OPERATIONS

MEDFLIGHT

Choosing A Landing Zone

Brown Out

- **Dry areas present a potential hazard for "brown out." A condition which severely restricts visibility during the critical landing phase of flight due to blowing dust**



COLLIER COUNTY HELICOPTER OPERATIONS

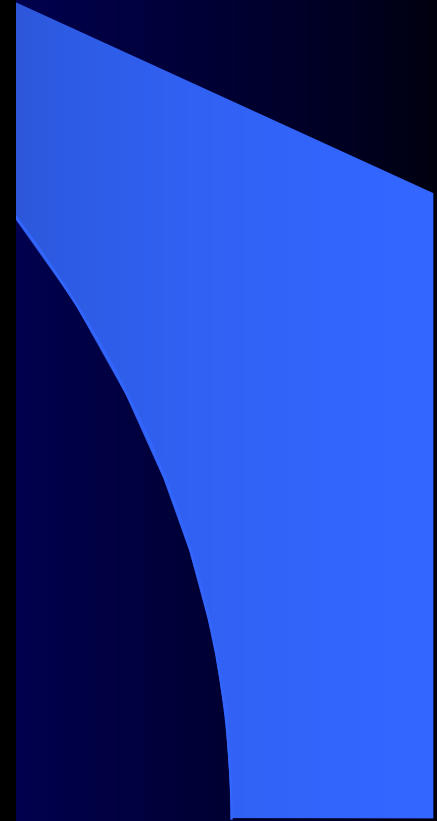
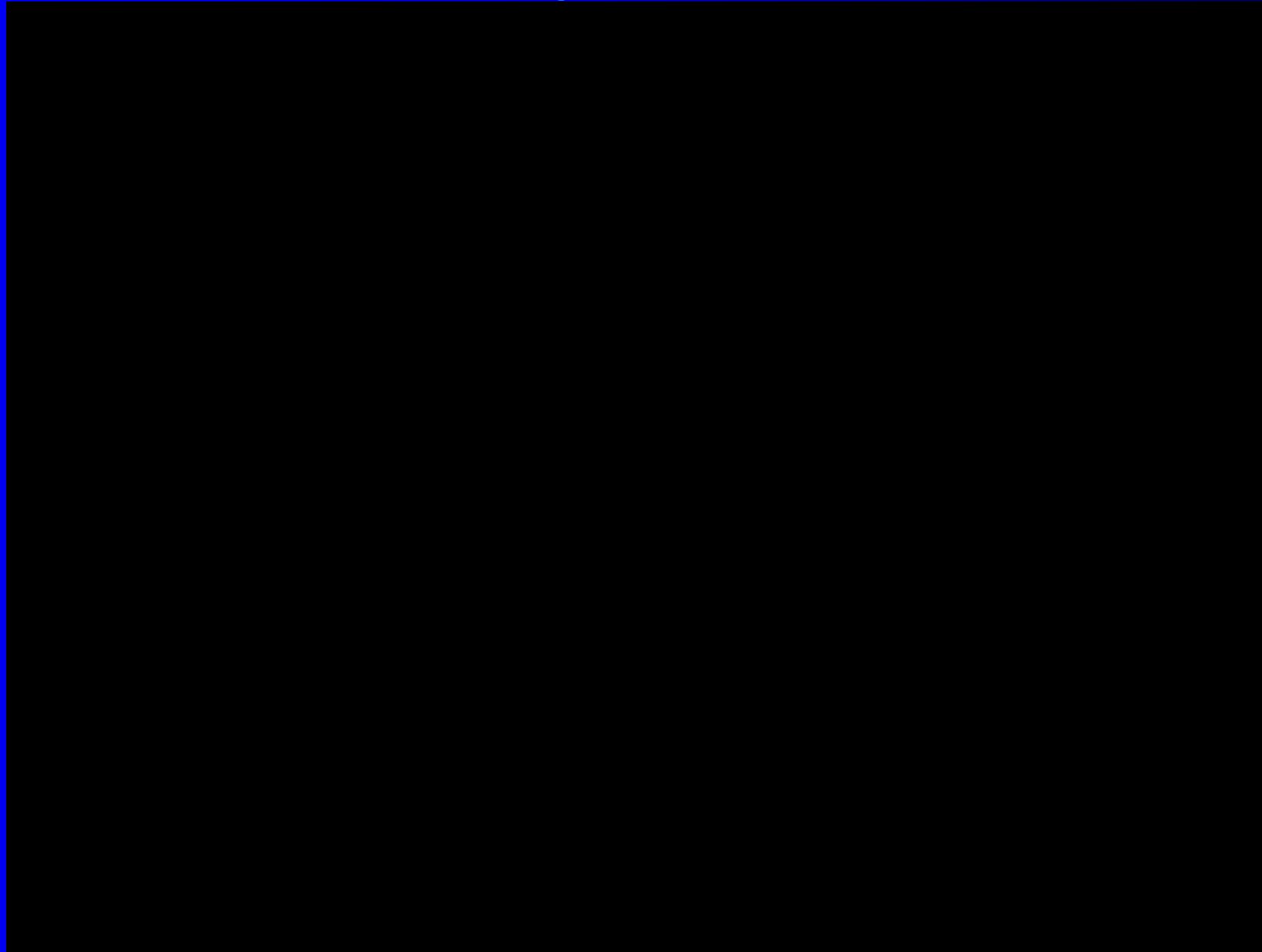
MEDFLIGHT

Choosing A Landing Zone

Brown Out



Brown Out





COLLIER COUNTY HELICOPTER OPERATIONS

MEDFLIGHT

Choosing A Landing Zone

APPROACH AND DEPARTURE PATHS

- Obstacles and patient treatment area
- Wind speed and direction
- Landing and Taking off into the wind.
- Helicopter should land downwind of patient care area.
- Sufficient distance from LZ to accident scene to avoid downwash



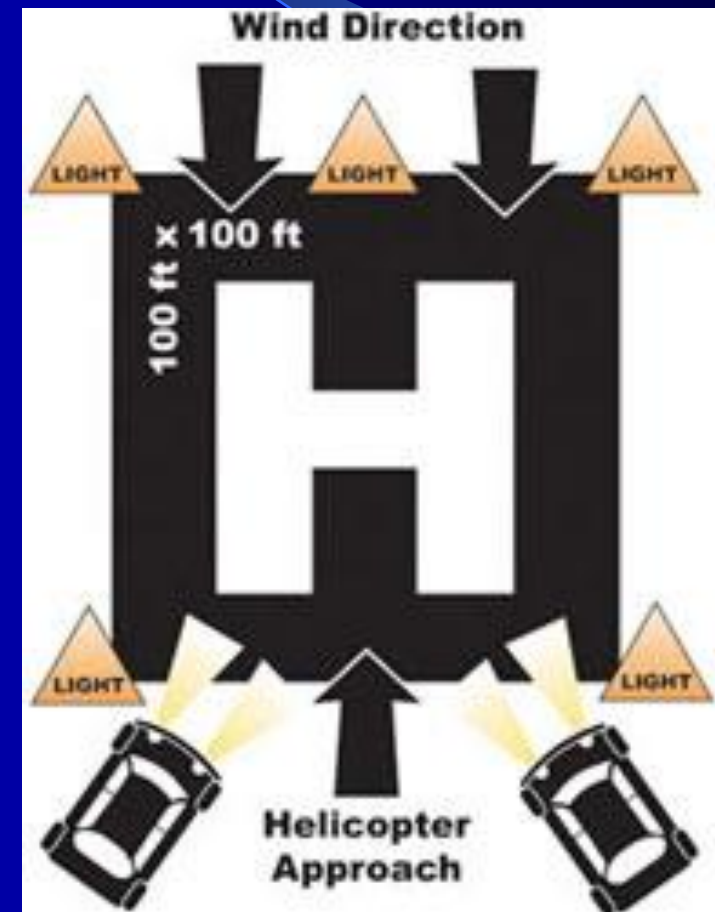
COLLIER COUNTY HELICOPTER OPERATIONS

MEDFLIGHT

Setup Landing Zone

LZ SET-UP

- Set markers (5) on the four corners and 1 marker on the upwind side of the landing area
- Always keep the landing area clear of people/vehicles
- Do not point spot lights at the cockpit of the aircraft
- 100x100 is ideal
- 80x80 is minimum for daytime landings





COLLIER COUNTY HELICOPTER OPERATIONS

MEDFLIGHT Flight Planning





COLLIER COUNTY HELICOPTER OPERATIONS

MEDFLIGHT Flight Planning

Why Does It Take So Long?

- #1 Question we get is why does it take so long to launch?

What It Takes To Launch MedFlight

Tones

- Flight Medics Actions

- Call to find out LZ from Control/Scene CDR (1-5 min.)
- Call for patient weight
- Pull helicopter out of hangar (2 min.)
- Perform walk around and plug-in APU (1 min.)

- Pilot

- Evaluates weather for departure point, LZ, and hospital (3-5 min.)
- Complete Weight & Balance calculations (2 min.)
- Complete Risk Assessment (30 sec.)
- Complete route planning tasks for all 3 legs of flight – record results (2 min.)
- Perform walk around and brief Flight Medics (1 min.)

- Both

- Starting procedures and launch aircraft (2-3 min.)

Average Launch Time = 7-10 minutes



COLLIER COUNTY HELICOPTER OPERATIONS

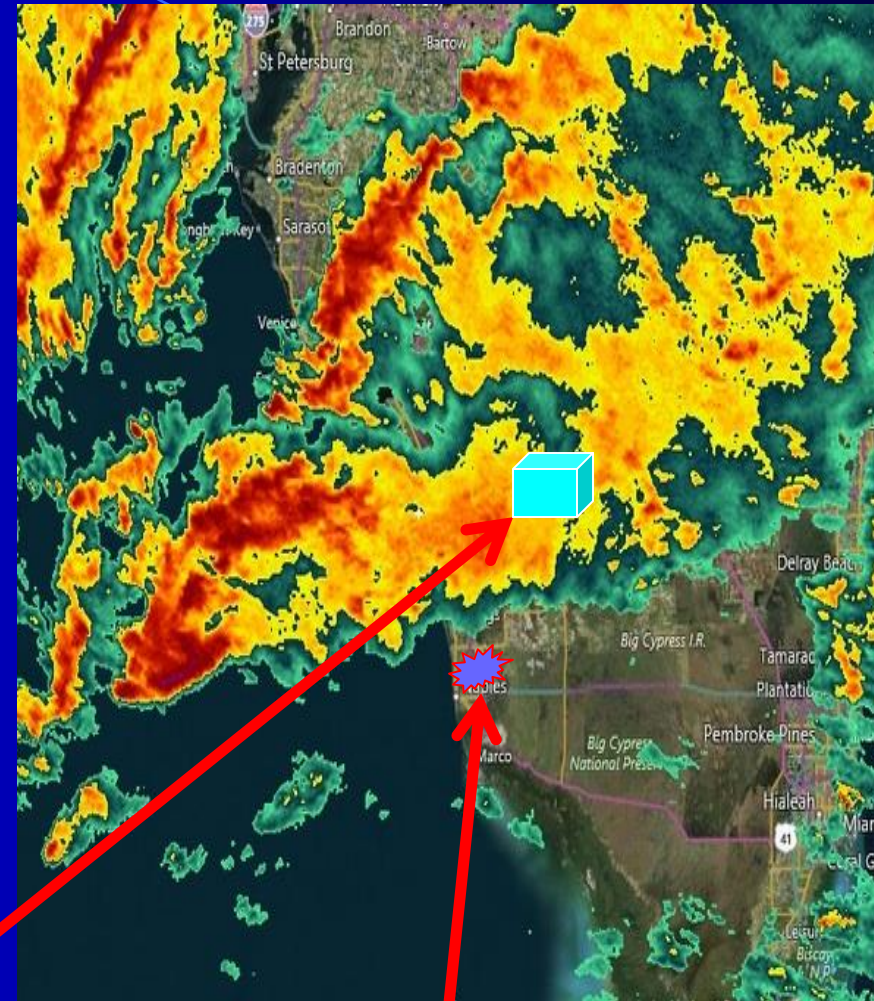
MEDFLIGHT Flight Planning

What you See



Hospital

What We See



You



COLLIER COUNTY HELICOPTER OPERATIONS

MEDFLIGHT

Weather / Helicopter Shopping

It is vitally important that the aircraft requestor **NOT** attempt to call multiple helicopter operators when the first program declines the flight due to weather.

The industry is plagued with “Chopper Shopping” crashes caused by the lack of information from one program to the next.

LZ Commanders have the responsibility to not delay transport of a patient in an attempt to “find a helicopter”.

If a program cancels due to weather **DO NOT** delay patient transport. If you call for a second helicopter you **MUST** inform the second operator that the first choice refused the flight due to weather.



COLLIER COUNTY HELICOPTER OPERATIONS

MEDFLIGHT Flight Planning

Route Planning



Weight & Balance

fx 4245.79643784787

Co-Pilot	Pilot	Status	TakeOff Wt
94	88	OK	2695.0
LH Aft	RH Aft	Flight Endur.	Available
0	93	1.7 hrs	140.0 kgs
Left Pt.	Fold Seat	Fuel Remain	T/O CG
0	0	105 min	4245.8
Main Fuel	ETE@120	FWD Limit	
300	11 min	4217.8	
Supply	Convert	AFT Limit	
84	21.7 25 sm	4390.8	

N911CK - Load Manifest

PIC/Holmes		FM1/Steger - 9		FM2/Wemert - 93		
Date:	6/21/16	Hobbs Start/End		Total		
Risk Assessment	4	5326.9			0.0	
Leg To	OFF	ON	T/O Wt	T/O CG	Obstacle	MSA
ST73			2695.0	4245.8	70	470
					419	719
					509	809
Trend Check	CDS N1	Torque	TOT	OAT	Altitude	Gallons Pumped
Engine 1						
Engine 2						
Remarks						
Version 9/10/15						

1 Pt 2 Pt Conversion DataSet + Sum: 4245.8



COLLIER COUNTY HELICOPTER OPERATIONS

MEDFLIGHT Flight Planning

Risk Form

HAA Helicopter

Dynamic Score

Day Flight	2	<input type="checkbox"/>
NVGs in Use	3	<input type="checkbox"/>
Night Flight/No NVGs	5	<input type="checkbox"/>
Cross Country	3	<input type="checkbox"/>
-	0	<input type="checkbox"/>
Scene Flight	2	<input type="checkbox"/>
Unimproved Pre-Designated LZ	2	<input type="checkbox"/>
Hospital Pad / Airport	1	<input type="checkbox"/>
-	0	<input type="checkbox"/>
Wx 1000 to 3000 / >3<5 vis / MVFR	2	<input type="checkbox"/>
Wx <1000 / <3 / IFR	5	<input type="checkbox"/>
Wx Abort by Other Operator	5	<input type="checkbox"/>
Wx Turndown by Other Operator	4	<input type="checkbox"/>
Temp/Dewpoint Within 4 Degrees C & Less Than 5kts Wind	2	<input type="checkbox"/>
Deteriorating Wx Trend	2	<input type="checkbox"/>
Convective Activity Along Route	1	<input type="checkbox"/>
High Winds (>20kts) or Gust Spread (>15kts)	1	<input type="checkbox"/>
-	0	<input type="checkbox"/>



COLLIER COUNTY HELICOPTER OPERATIONS

MEDFLIGHT Flight Planning

2-Patient Configuration

- Preferred Prior to leaving MHQ
- Takes approximately 3 minutes
- If required on-scene, helicopter will be shut down for pilot assist (**Cold Load**)
- May require additional personnel to assist in loading patients





COLLIER COUNTY HELICOPTER OPERATIONS

MEDFLIGHT

Arrival & Departure



COLLIER COUNTY HELICOPTER OPERATIONS

MEDFLIGHT

Arrival & Departure

LZ Briefing

- All communication for Landing Zone information will take place on PS Wide 1 channel
- Contact will be initiated by the MedFlight crew after launch
 - Estimated time to Landing Zone
 - Request Landing Zone briefing
- Your landing zone briefing should consist of:
 - Your location in the landing zone
 - Known obstacles and hazards
 - Approximate wind speed and direction
 - Specific instruction to identify exact location for the helicopter

Sterile Cockpit Procedures: FAA regulation restricts flight crews from non essential communications during critical phases of flight.

We are not ignoring you

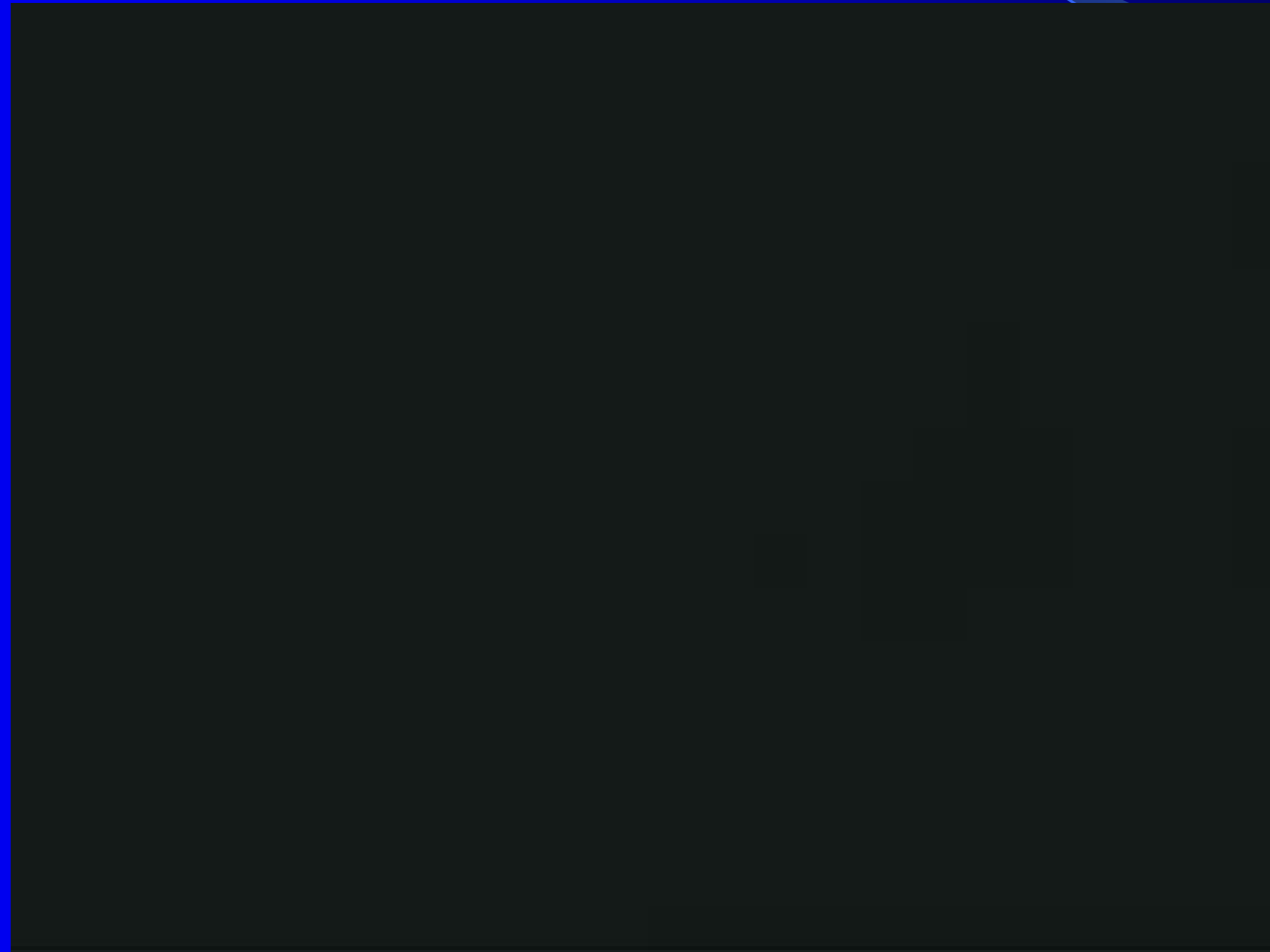


COLLIER COUNTY HELICOPTER OPERATIONS

MEDFLIGHT

Arrival & Departure

Engine Failure on Final



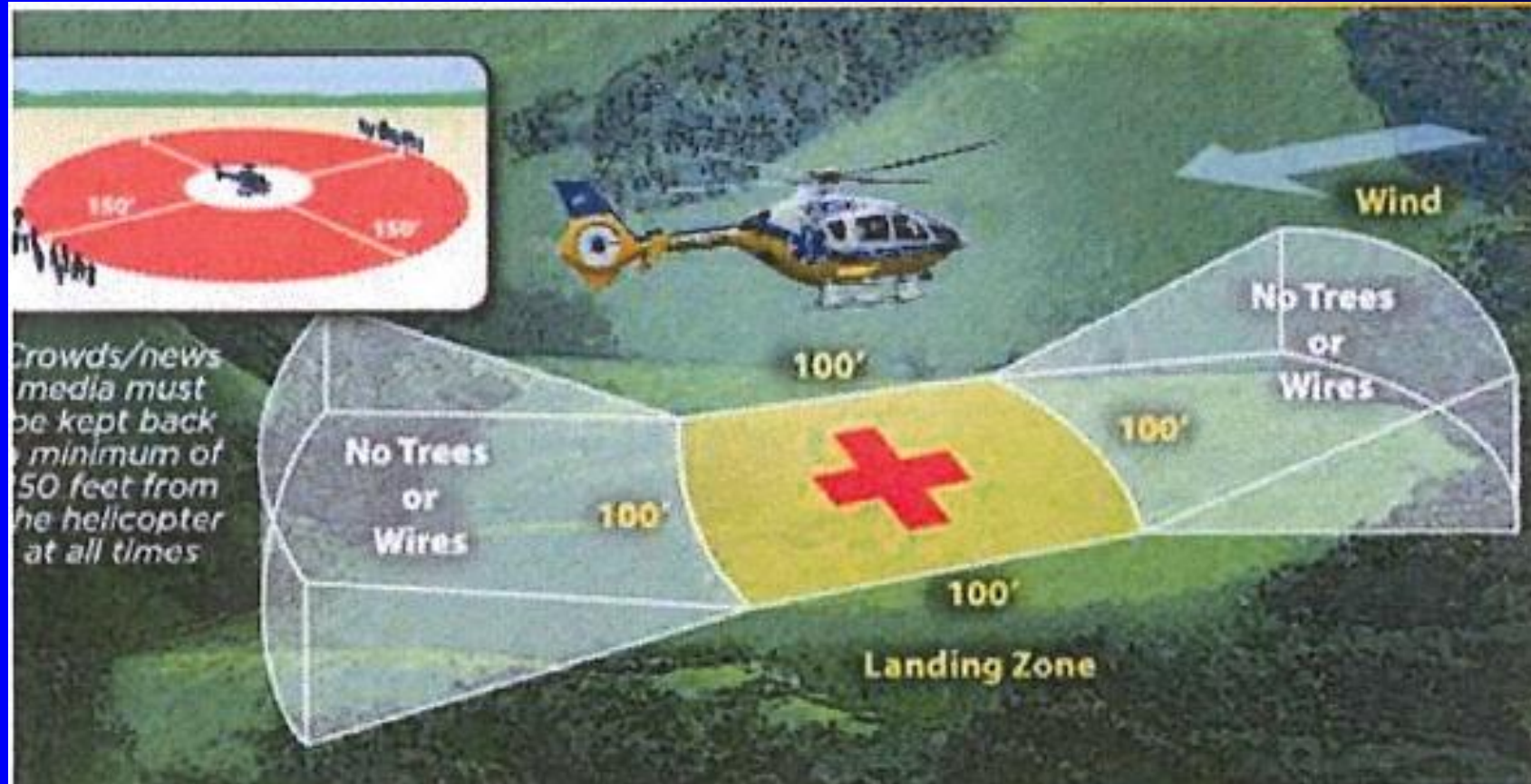


COLLIER COUNTY HELICOPTER OPERATIONS

MEDFLIGHT

Arrival & Departure

APPROACH AND DEPARTURE PATHS





COLLIER COUNTY HELICOPTER OPERATIONS

MEDFLIGHT Arrival & Departure

Landing Zone Brief

- Obstacles
- Wind Direction and Speed
- Describe where you want the aircraft to land

Why is it important to tell the pilot wind information?

Hosted On

LiveLeak





COLLIER COUNTY HELICOPTER OPERATIONS

MEDFLIGHT

Arrival & Departure

LANDING PHASE

- **Maintain radio contact with the helicopter on PS Wide 1**
- **Maintain LZ security 2 minutes after take off**
- **In case of an unexpected hazard communicate immediately**



“ABORT, ABORT , ABORT”



COLLIER COUNTY HELICOPTER OPERATIONS

MEDFLIGHT

Arrival & Departure

CAUTION

- Rotor downwash can blow dirt, debris, and gravel with enough force to cause personal injury or property damage.
- **Helmet with eye protection is essential**



COLLIER COUNTY HELICOPTER OPERATIONS

MEDFLIGHT Arrival & Departure

GROUND OPERATIONS

- Never approach aircraft unless requested by Flight crew
- Do not take patients to Flight Medics let them come to you.
- Never approach the tail rotor!!
- Never open or close any door of the helicopter. (you break it, you buy it!)





COLLIER COUNTY HELICOPTER OPERATIONS

MEDFLIGHT

Arrival & Departure

CAUTION

Operations in and around the aircraft are conducted under stressful and noisy conditions; approaching the aircraft without specific instruction is **NOT** permissible.





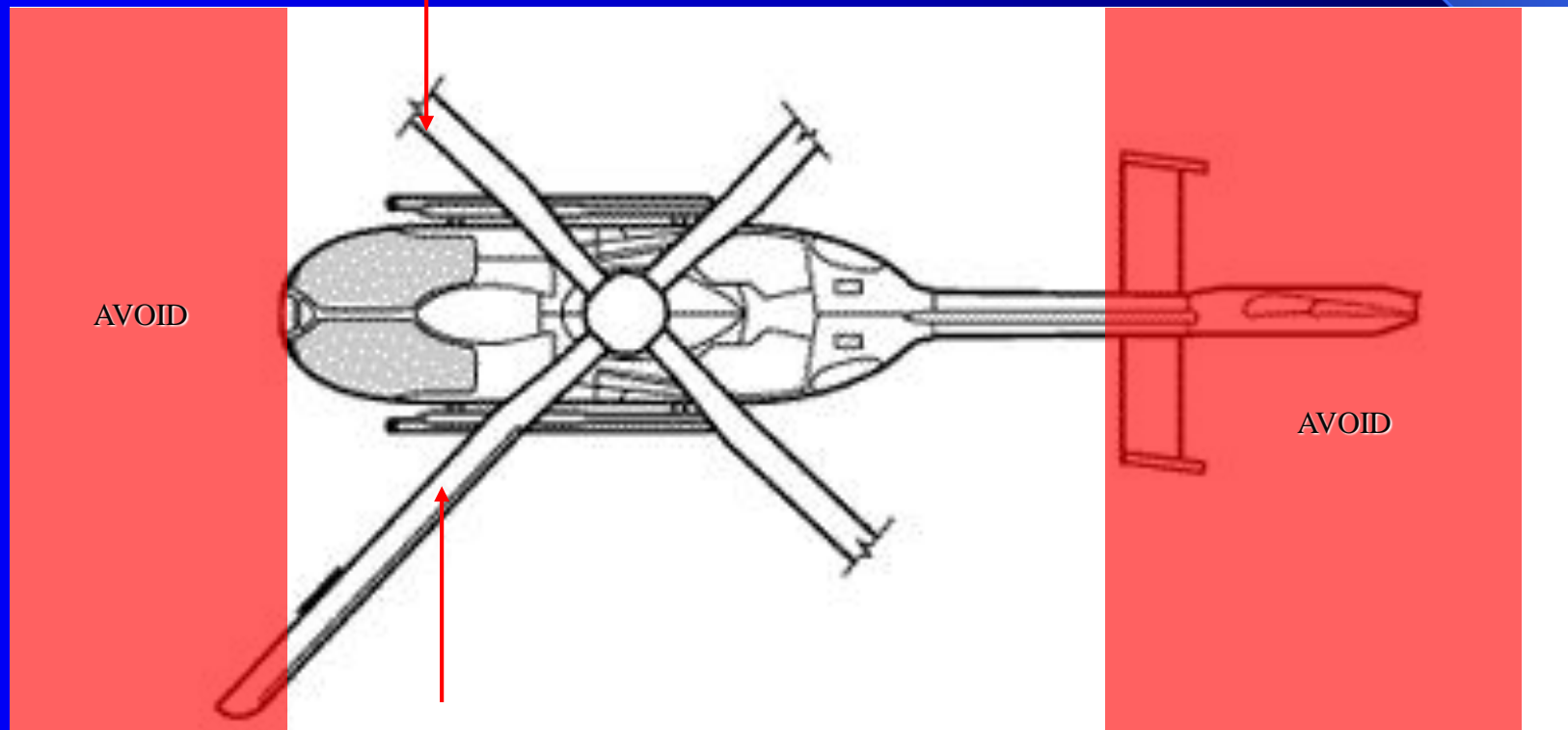
COLLIER COUNTY HELICOPTER OPERATIONS

MEDFLIGHT

Arrival & Departure

CAUTION

- If you are directed to approach the aircraft, only approach from the sides.





COLLIER COUNTY HELICOPTER OPERATIONS

MEDFLIGHT

Arrival & Departure

DEPARTURE

- You will hear engine RPM increase prior to aircraft lifting.
- LZ Commander should move to pilots front right side of Aircraft. **Do not stand directly in front of aircraft.**
- Maintain radio contact on PS Wide 1 as helicopter lifts off.
- If you observe a safety concern: Immediately announce ABORT and use these hand signals



- Remain on PS Wide 1 and maintain LZ security for 2 min. in case aircraft has to return for emergency landing



COLLIER COUNTY HELICOPTER OPERATIONS

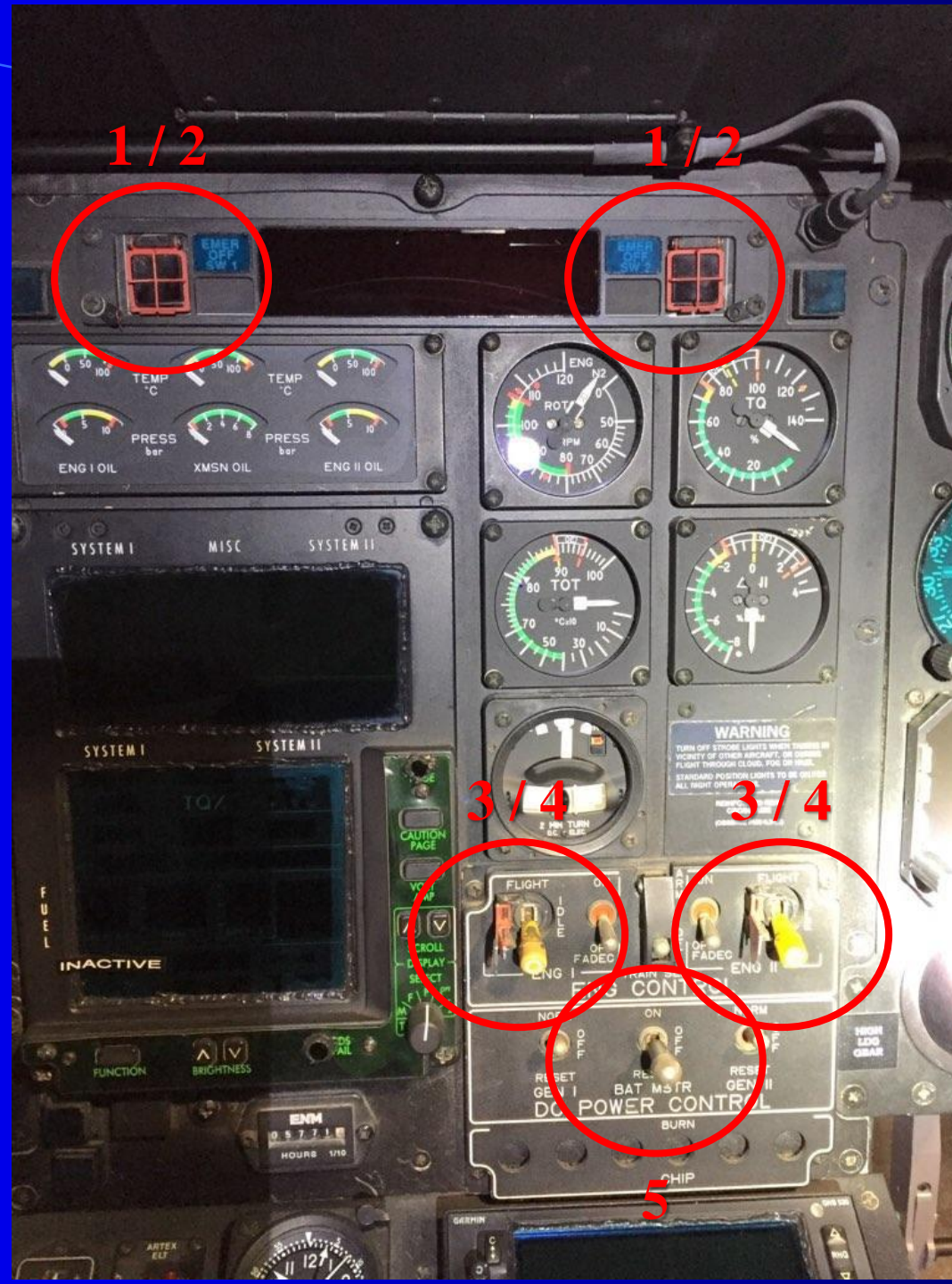
MEDFLIGHT

Emergency Engine Shut-Down

In case of a crash at or near the LZ it may become necessary for the LZ Commander to perform an emergency engine shut-down of the helicopter.

Follow these steps on the following slides:

1. Pull up on each guard
2. Press the button on ea.
3. Pull open each red guard
4. Pull out and down the yellow switch
5. Pull out and to OFF





COLLIER COUNTY HELICOPTER OPERATIONS

MEDFLIGHT

Emergency Engine Shut-Down

Activate Emergency Locator Transmitter (ELT)

The ELT, when activated, sends a signal to the FAA that an aircraft has experienced a hard landing. It should activate automatically, however, in some situations it may be activated manually.

1. On the dashboard flip the red switch up to activate
A red light will illuminate
2. Another switch is located on the ELT itself but it very hard to reach as it is under the flight controls





COLLIER COUNTY HELICOPTER OPERATIONS

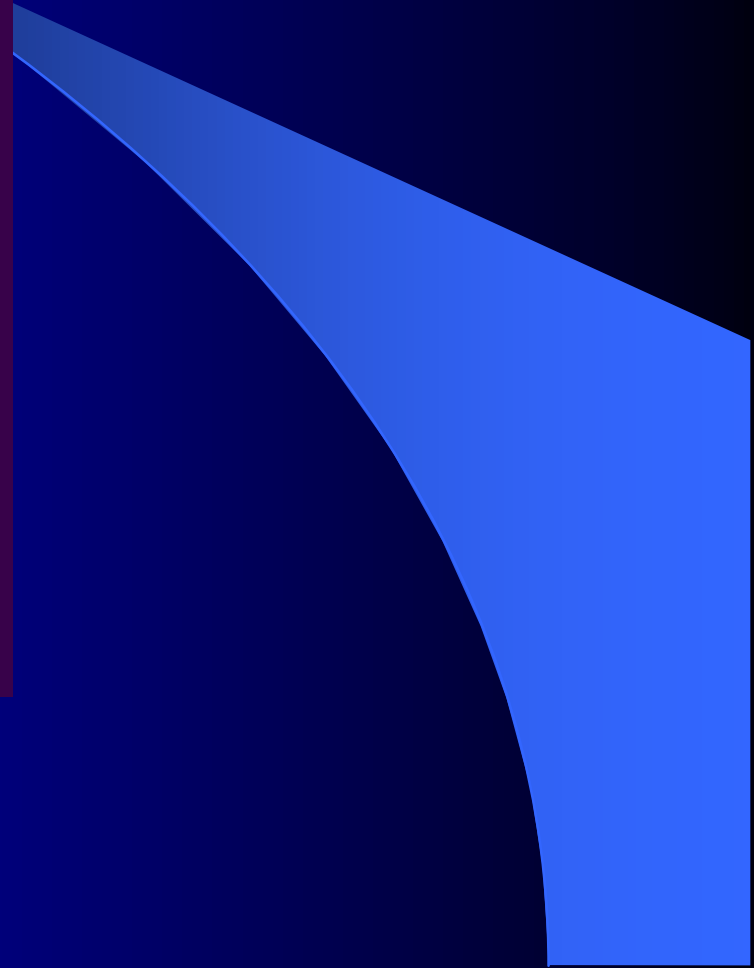
MEDFLIGHT Night Operations





COLLIER COUNTY HELICOPTER OPERATIONS

MEDFLIGHT Night Operations





COLLIER COUNTY HELICOPTER OPERATIONS

MEDFLIGHT Night Operations

NIGHT OPERATIONS

- If possible the LZ should be clearly identified by strobe lights or ground vehicles
- DO NOT point lights in the direction of the landing zone
- Clearly mark and/or discuss hazards with pilot / helicopter crew prior to landing



COLLIER COUNTY HELICOPTER OPERATIONS

MEDFLIGHT

Night Operations

LZ SET-UP

- **Set markers (5) on the four corners and 1 marker on the upwind side of the landing area**
- **Always keep the landing area clear of people/vehicles**
- **Assure that lights are not pointed at the aircraft**
- **100x100 feet is minimum**



COLLIER COUNTY HELICOPTER OPERATIONS

MEDFLIGHT Safety Rules

GENERAL SAFETY RULES

- Never approach or allow anyone to approach the aircraft.
- No smoking or open flame within 100 feet
- No hats or unsecured articles
- Never run or hurry
- No vehicle movement near aircraft
- Keep your head/eyes up
- Notify pilot/flight crew if something is wrong

Thank You!



Questions / Comments