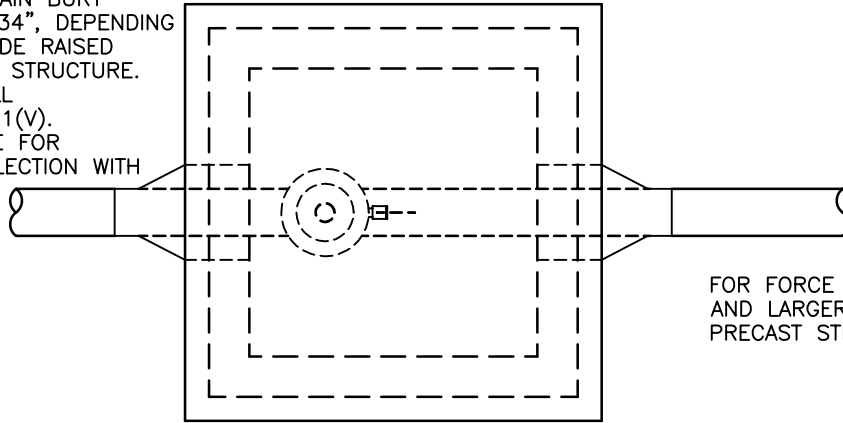


NOTE:

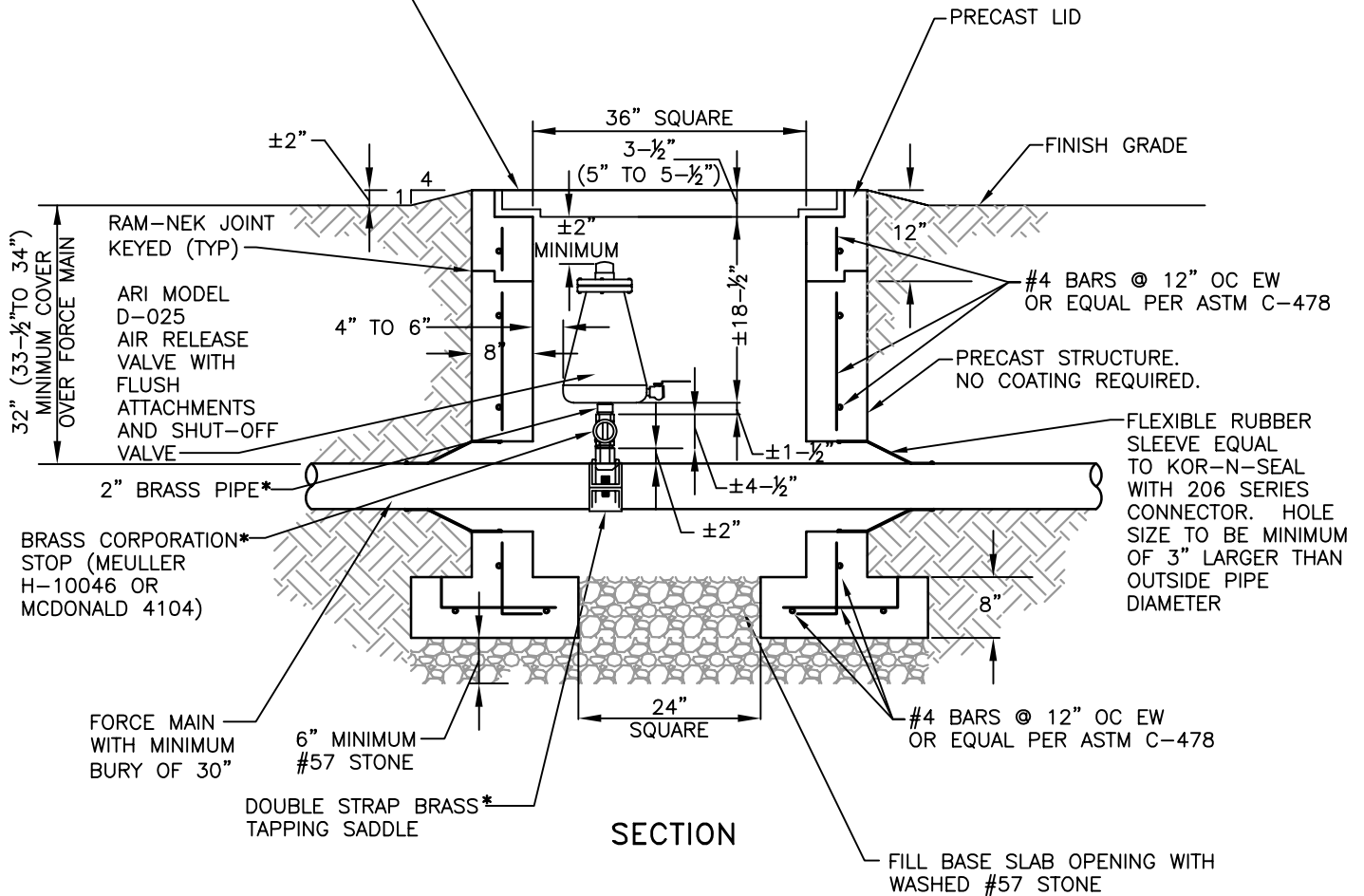
IN LOCATIONS WITH FORCE MAIN BURY BETWEEN 30" AND 32" (OR 34", DEPENDING ON HATCH SELECTED), PROVIDE RAISED GRADE AROUND VALVE VAULT STRUCTURE. FINISHED GRADE SLOPE SHALL NOT BE GREATER THAN 4(H):1(V). CONTRACTOR IS RESPONSIBLE FOR COORDINATION OF HATCH SELECTION WITH AREA AVAILABLE FOR SLOPE.



FOR FORCE MAINS 24" DIAMETER AND LARGER, USE 48" SQUARE PRECAST STRUCTURE

PLAN

36" x 36" ALUMINUM ACCESS HATCH:
HALLIDAY H1W (3-1/2" DEPTH AS SHOWN)
OR BILCO J-AL H20 (5-1/2" DEPTH)
OR US FOUNDRY AHS (5" DEPTH) WITH
OPTIONS EQUAL TO HALLIDAY H1W. HATCH
TO HAVE 316 STAINLESS STEEL HARDWARE
AND BE CAST INTO LID.



SECTION

*BRASS PIPE, CORPORATION STOP AND TAPPING SADDLE SHALL BE 2" FOR FORCE MAIN

**FORCE MAIN AIR RELEASE VALVE DETAIL
(NON-TRAFFIC AREA)**

SCALE: 1/2" = 1'-0"

WW-13

REVISED: APRIL 2006