



Southwest Florida Research and Education Center

Rural Lands Stewardship Program
March 22, 2018

Calvin Arnold, PhD
Center Director

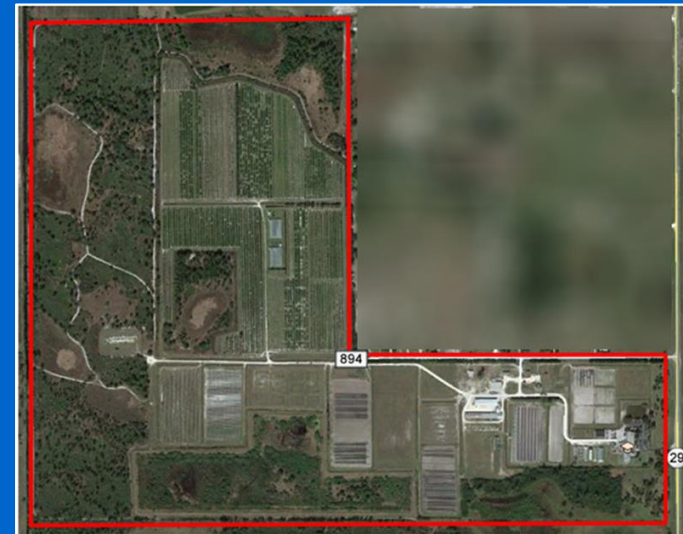
Who We Are

- The University of Florida has had a strong commitment to Collier County for more than 70 years
 - County Extension Agents
 - Southwest Florida Research and Education Center



Who We Are

- Established in 1958; official REC in 1986
- 320-acre site in Immokalee
- 80-plus employees
- Total Annual Operating Budget: ~\$11 Million



Who We Are



- Mission Statement: To serve commercial growers, small farmers, and other clientele with science-based information on agriculture and natural resources
- SWFREC supplies decision-makers with specific knowledge to sustain and enhance agricultural, human, and natural resources

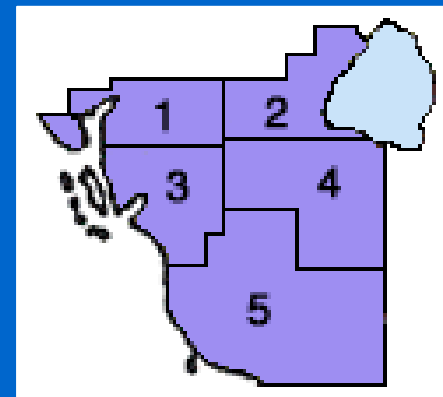
What We Do



- Research focused primarily on:
 - Citrus
 - Vegetables



- Extend technologies to growers in 5-county area



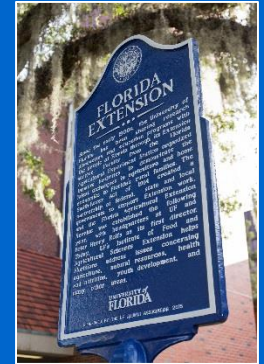
13 Research/Extension Programs Led by Ph.D. Faculty

- Kelly Morgan—Soil and Water Scientist
- Sanjay Shukla—Water Resources Engineer
- Tara Wade—Natural Resources Economist
- Fritz Roka—Agricultural Economist
- Phil Stansly—Entomologist
- Pam Roberts—Vegetable Pathologist

13 Research/Extension Programs Led by Ph.D. Faculty

- Ozgur Batuman—Citrus Pathologist
- Sarah Strauss—Soil Microbiologist
- Ute Albrecht—Plant Pathologist
- Yiannis Ampatzidis—Precision Ag. Engineer
- Ramdas Kanissery—Weed Scientist
- Fernando Alferez—Citrus Horticulturist
- Monica Ozores-Hampton—Vegetable Horticulturist

Solutions for Your Life



- 5 County Extension Faculty in Collier County
- 1 State Specialized Agent in Food Safety—
Matt Krug



Examples of Research Projects

- Development of Best Management Practices (BMPs) for Agricultural Production
- Economics of BMPs
- Water Storage on Farmlands



Examples of Research Projects

- Delineation of Lake Trafford Watershed

- Biological Control of Pests



- Micro-Irrigation of Citrus and Vegetables



Thank you!

Questions?

