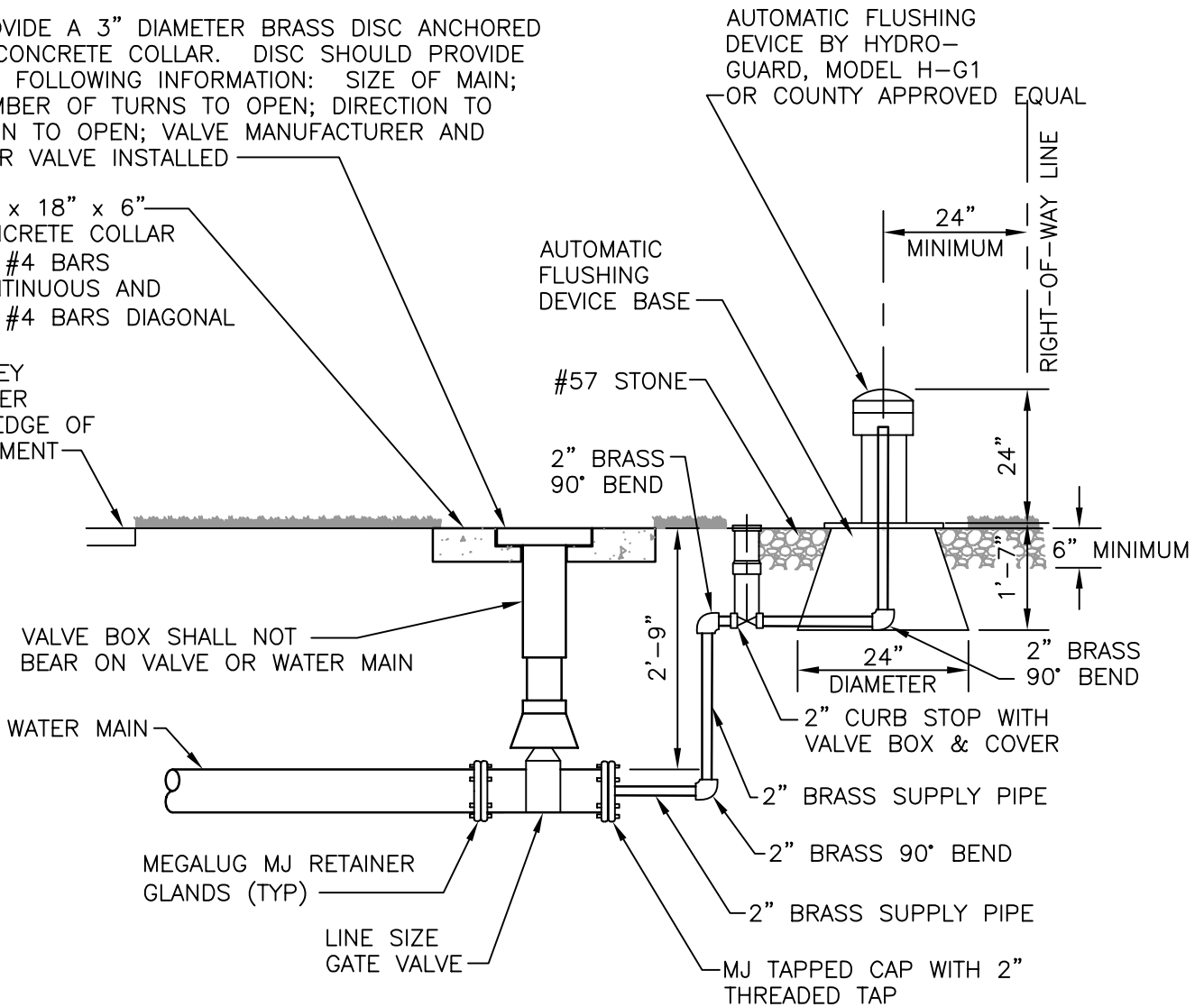


PROVIDE A 3" DIAMETER BRASS DISC ANCHORED IN CONCRETE COLLAR. DISC SHOULD PROVIDE THE FOLLOWING INFORMATION: SIZE OF MAIN; NUMBER OF TURNS TO OPEN; DIRECTION TO TURN TO OPEN; VALVE MANUFACTURER AND YEAR VALVE INSTALLED

18" x 18" x 6" CONCRETE COLLAR  
(2) #4 BARS CONTINUOUS AND  
(4) #4 BARS DIAGONAL

VALLEY GUTTER OR EDGE OF PAVEMENT



VALVE BOX SHALL NOT BEAR ON VALVE OR WATER MAIN

WATER MAIN

MEGALUG MJ RETAINER GLANDS (TYP)

LINE SIZE GATE VALVE

MJ TAPPED CAP WITH 2" THREADED TAP

#### NOTES:

1. PIPING SHALL BE INSTALLED UP TO 2" CURB STOP WITH VALVE BOX AND COVER AT TIME OF MAIN INSTALLATION.
2. AUTOMATIC FLUSHING DEVICE SHALL BE INSTALLED AFTER MAIN LINE HAS BEEN BACTERIOLOGICALLY TESTED, BUT PRIOR TO TIE-IN.
3. ALL THREAD HARD PIPING SHALL BE BRASS.
4. SEE TECHNICAL SPECIFICATIONS SECTION 15100 FOR GATE VALVE AND VALVE BOX REQUIREMENTS.
5. AT TIME OF ACCEPTANCE, WATER DEPARTMENT WILL INSTALL 2" METER.

### AUTOMATIC WATER MAIN FLUSHING DEVICE DETAIL

NTS

W-2  
REVISED: JULY 2006