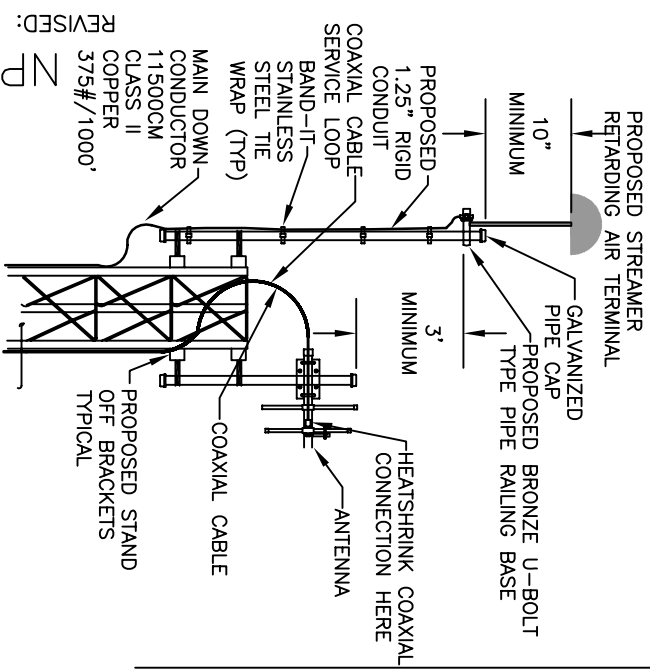
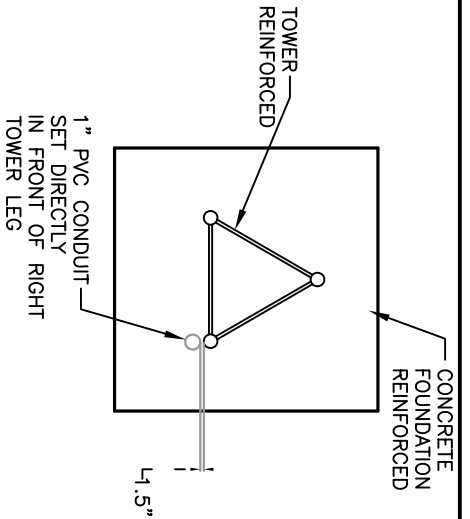


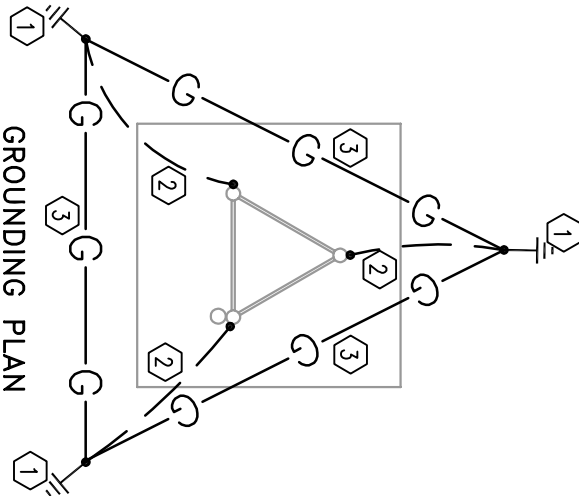
DETAIL #1 GROUNDING DETAIL



DETAIL #2 TOWER TOP DETAIL



CONDUIT DETAIL TOP VIEW

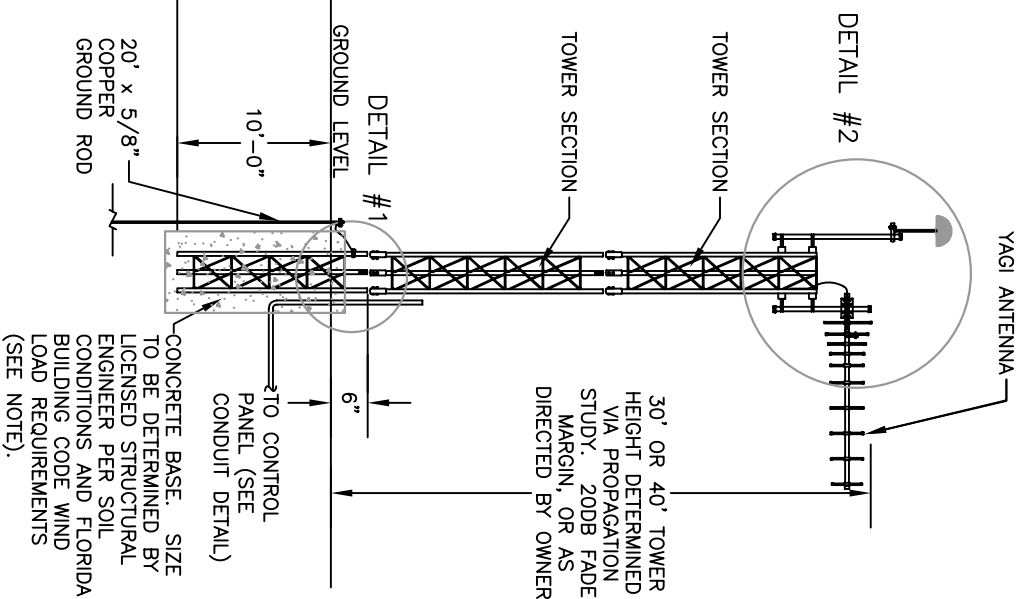


KEYNOTES:

1. 20' DRIVEN GROUND ROD WITH INSPECTION TEST WELL (SEE DETAIL) (TYP).
2. #2 TINNED SOLID COPPER TO TOWER LEG (TYP).
3. #2 TINNED BARE COPPER COUNTERPOISE LOOP GROUND (TYP).

GROUNDING PLAN

TELEMETRY FREQUENCY AS DETERMINED BY THE COUNTY



TYPICAL POLE DETAIL

NOTE:
TOWER/ANTENNA ASSEMBLY AND FOUNDATION CONSTRUCTION MUST MEET CURRENT EDITION FLORIDA BUILDING CODE WIND LOAD REQUIREMENTS FOR 140 MPH WIND ZONE. PROVIDE STRUCTURAL CERTIFICATION BY FLORIDA REGISTERED LICENSED PROFESSIONAL ENGINEER.

CONCRETE BASE: SIZE TO BE DETERMINED BY LICENSED STRUCTURAL ENGINEER PER SOIL CONDITIONS AND FLORIDA BUILDING CODE WIND LOAD REQUIREMENTS (SEE NOTE).

REVISED: APRIL 2006



REUSE SYSTEM STANDARD SERVICE CONNECTIONS
OPEN/CLOSE VALVE SINGLE CONTROL PANEL SITE
TYPICAL RTU ANTENNA TOWER DETAILS

NTS