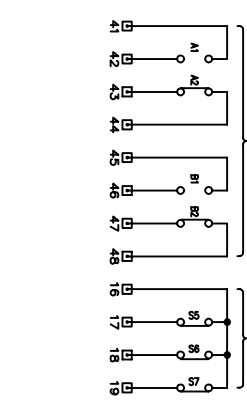
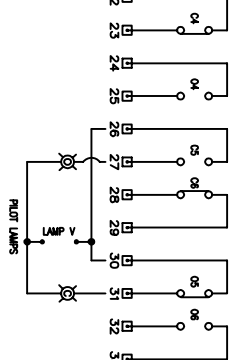
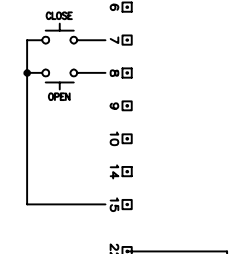
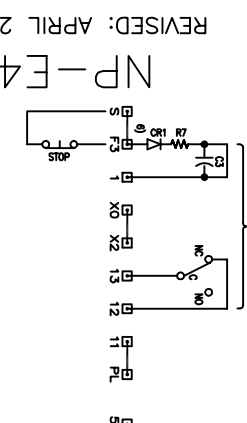


SS CONTACT TABLE

S1	X	0	0
S2	0	0	X
S3	0	X	X
S4	X	X	0
S5	X	0	0
S6	0	0	X
S7	X	X	0

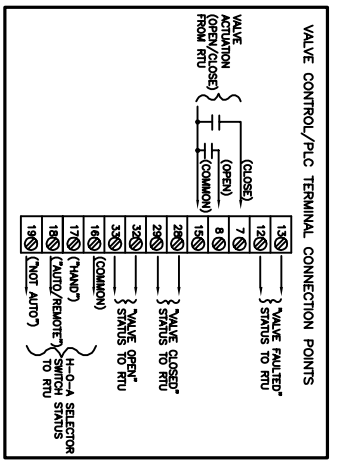
NOTE: MOV CONTROL SHOWN IS BASED ON EM CONTROLS. ROTORK IS REQUIRED AND IS SIMILAR.

NOTE: SET VALUE TO FAIL IN PLACE ON LOSS OF POWER.



CONTACT	VALVE POSITION	FUNCTION
C1	0	CLOSE COIL
C2	X	0
C3	0	BYPASS TO I
C4	X	0
C5	0	OPEN LAMP
C6	X	0
C7	0	0
C8	X	0
C9	0	0
C10	X	0
C11	0	0
C12	X	0
C13	0	BYPASS TO I
C14	X	0
C15	0	CLOSE LAMP
C16	X	0
C17	0	0
C18	X	0
C19	0	0
C20	X	0
C21	0	0
C22	X	0
C23	0	0
C24	X	0
C25	0	0
C26	X	0
C27	0	0
C28	X	0
C29	0	0
C30	X	0
C31	0	0
C32	X	0
C33	0	0
C34	X	0
C35	0	0
C36	X	0
C37	0	0
C38	X	0
C39	0	0
C40	X	0
C41	0	0
C42	X	0
C43	0	0
C44	X	0
C45	0	0
C46	X	0
C47	0	0
C48	X	0
C49	0	0
C50	X	0
C51	0	0
C52	X	0
C53	0	0
C54	X	0
C55	0	0
C56	X	0
C57	0	0
C58	X	0
C59	0	0
C60	X	0
C61	0	0
C62	X	0
C63	0	0
C64	X	0
C65	0	0
C66	X	0
C67	0	0
C68	X	0
C69	0	0
C70	X	0
C71	0	0
C72	X	0
C73	0	0
C74	X	0
C75	0	0
C76	X	0
C77	0	0
C78	X	0
C79	0	0
C80	X	0
C81	0	0
C82	X	0
C83	0	0
C84	X	0
C85	0	0
C86	X	0
C87	0	0
C88	X	0
C89	0	0
C90	X	0
C91	0	0
C92	X	0
C93	0	0
C94	X	0
C95	0	0
C96	X	0
C97	0	0
C98	X	0
C99	0	0
C100	X	0

- NOTES**
- CONTACTS SHOWN: VALVE CLOSED: VOLTAGE OFF: S/S: HAND
 - CUSTOMER WIRES TO TERMINALS ON PWR AND TBM MODULES.
 - MZOP INTERNAL TERMINAL INTERCONNECT WIRING POINTS.
 - FIELD CONNECTED WIRING BY OTHERS.
 - TORQUE SWITCH (O-C-T-O) "TOI" & "TOT" NC CONTACTS OPEN, AND (O-C-T-O) "TOI" & "TOT" NO CONTACTS MAKE ON FIELD ADJUSTABLE MECHANICAL OVERLOAD IN (C) "CLOSE" OR IN (O) "OPEN" DIRECTION.
 - FOR TORQUE SEATED VALVE: INSTALL G TO H STRAP ON LSM.
 - FOR MAINTAINED PB CONTROL: REMOVE S TO G STRAP ON TBM.
 - FOR REMOTE STOP PB OR RELAY: REMOVE F3 TO S STRAP ON TBM.
 - O & C (22-31) REVERSING CONTACTOR NC INTERLOCK CONTACTS.
 - O & C (14-13) MOMENTARY PUSHBUTTON N.O. SEAL-IN CONTACTS.
 - MOTOR THERMAL CONTACTS OPEN WITH EXCESSIVE TEMPERATURE.
 - POSITION INDICATOR PILOT LIGHTS: LED SOLID-STATE
- "OPEN" INDICATES: FULL OPEN (RED)
 "CLOSE" INDICATES: FULL CLOSED (GREEN)
 MID-POSITION: BOTH "OPEN" AND "CLOSE" ILLUMINATED.
 "PWR ON" AND "TORQUE" INDICATORS ARE ONLY VISIBLE WITH COVER OPEN FOR CONVENIENCE DURING MAINTENANCE PROCEDURES.



- LEGEND**
- O-OPEN CONTACT
 - C-CLOSE CONTACT
 - ⊖-OPENING COIL
 - ⊕-CLOSING COIL
 - ⊕-MECHANICAL INTERLOCK
 - ⊕-THERMAL POWER TRANSFORMER
 - ⊕-THERMAL OVERLOAD CONTACTS
 - SS-SELECTOR SWITCH (LOCAL-OFF-REMOTE)
 - PB-PUSHBUTTON
 - MR-MOTOR RELAY
 - ZR-ZENER DIODE
 - ⊕-RED INDICATING LIGHT
 - ⊕-AMBER INDICATING LIGHT
 - ⊕-GREEN INDICATING LIGHT