



FLORIDA DEPARTMENT *of* STATE

RICK SCOTT
Governor

KEN DETZNER
Secretary of State

May 10, 2017

Honorable Dwight E. Brock
Clerk of the Circuit Court
Collier County
Post Office Box 413044
Naples, Florida 34101-3044

Attention: Ann P. Jennejohn, Deputy Clerk

Dear Mr. Brock:

Pursuant to the provisions of Section 125.66, Florida Statutes, this will acknowledge receipt of your electronic copy of Collier County Ordinance No. 17-16, which was filed in this office on May 10, 2017.

Sincerely,

Ernest L. Reddick
Program Administrator

ELR/lb

ORDINANCE NO. 17- 16

AN ORDINANCE OF THE BOARD OF COUNTY COMMISSIONERS OF COLLIER COUNTY, FLORIDA, AMENDING ORDINANCE NO. 02-61, AS AMENDED, THE FIDDLER'S CREEK COMMUNITY DEVELOPMENT DISTRICT #2; AMENDING THE DISTRICT BY EXPANDING THE EXTERNAL BOUNDARIES BY APPROXIMATELY 1.06 ACRES AND CONTRACTING THE EXTERNAL BOUNDARIES BY APPROXIMATELY 9.41 ACRES, DECREASING THE SIZE OF THE DISTRICT FROM APPROXIMATELY 1,068.09 ACRES TO APPROXIMATELY 1,059.734 ACRES, OR A NET CONTRACTION OF APPROXIMATELY 8.35 ACRES; PROVIDING FOR CONFLICT AND SEVERABILITY; PROVIDING FOR INCLUSION IN THE CODE OF LAWS AND ORDINANCES; AND PROVIDING FOR AN EFFECTIVE DATE.

WHEREAS, on November 19, 2002, the Board of County Commissioners (Board) adopted Ordinance No. 2002-61 establishing the Fiddler's Creek Community Development District #2 (District), as a community development district within the meaning of Chapter 190, Florida Statutes; and

WHEREAS, the original boundaries set forth in Ordinance 2002-61 established boundaries resulting in 998.79 acres; and

WHEREAS, on June 24, 2014, the Board approved Ordinance 2014-26, amending Ordinance 2002-61, which expanded the external boundaries of the district from 998.6 acres to 1,068.09 acres, or 69.30 additional acres; and

WHEREAS, Fiddler's Creek Community Development District #2 (Petitioner), through its counsel, Anthony P. Pires, Jr., has petitioned the Board to expand the boundaries of the District by approximately 1.06 acres, and to contract the boundaries of the District by approximately 9.41 acres, as authorized by Section 190.046 (1), Florida Statutes, for a net contraction of the boundaries by approximately 8.35 acres, decreasing the size of the District to approximately 1,059.734 acres; and

WHEREAS, Petitioner has simultaneously filed a Petition with the Florida Land and Water Adjudicatory Commission (FLAWAC) for the amendment of Fiddler's Creek Community Development District #1 (CDD #1); and

WHEREAS, approval of this Petition is completely contingent upon the approval of the petition to amend CDD #1, so Petitioner has requested that this Ordinance be effective as of the date that the rule amendment process by FLAWAC of a Rule amending CDD #1 is complete as evidenced by entry of the amended rule for CDD#1 by the Florida Secretary of State; and

WHEREAS, the Board considered the Petition at a duly noticed public hearing; and

WHEREAS, upon consideration of the Petition, the Board determined the following:

1. The statements made within the Petition are true and correct.
2. Amending the Ordinance is not inconsistent with any applicable element or portion of the comprehensive plan.
3. The land within the District continues to be of sufficient size, to be sufficiently compact, and to be sufficiently contiguous to be developable as a functionally interrelated community.
4. The Amendment will not expand the district greater than 50 percent of the land in the initial district, and in no event greater than 1,000 acres on a cumulative net basis.
5. The District continues to be the best alternative available for delivering community development services and facilities to the area serviced by the District.
6. The service and facilities of the District will continue to not be incompatible with the capacity and uses of any existing local and regional community development services and facilities.
7. The area to be serviced by the District remains amenable to separate special district governance; and

WHEREAS, the Board finds that Petitioner has otherwise satisfied all requirements set forth in Section 190.046, Florida Statutes, and finds it to be in the best interest of all parties to make the effective date of this Ordinance contingent on the approval of CDD #1 by FLAWAC.

NOW, THEREFORE, BE IT ORDAINED BY THE BOARD OF COUNTY COMMISSIONERS OF COLLIER COUNTY, FLORIDA that:

SECTION ONE: AMENDMENT OF ORDINANCE NO. 02-61, AS AMENDED.

The previous legal description of the District as depicted in Exhibit A, is hereby superseded and replaced by the legal description of the District described in Exhibit B, reflecting the areas added and the areas contracted from the District through this amendment.

SECTION TWO: EXTERNAL BOUNDARIES OF THE DISTRICT.

The external boundaries of the District encompass 1,059.734 acres of land, more or less, as described in Exhibit B.

SECTION THREE: CONFLICT AND SEVERABILITY.

In the event this Ordinance conflicts with any other ordinance of Collier County or other applicable law, the more restrictive shall apply. If any phrase or portion of this Ordinance is held invalid or unconstitutional by any court of competent jurisdiction, such portion shall be deemed a separate, distinct and independent provision and such holding shall not affect the validity of the remaining portion.

SECTION FOUR: INCLUSION IN THE CODE OF LAWS AND ORDINANCES.

The provisions of this Ordinance shall become and be made a part of the Code of Laws and Ordinances of Collier County, Florida. The sections of the Ordinances may be renumbered or relettered to accomplish such, and the word "ordinance" may be changed to "section," "article," or any other appropriate word.

SECTION FIVE: EFFECTIVE DATE.

This Ordinance shall not become effective until the date that the rule amendment process by FLAWAC of a Rule amending CDD #1, as requested by the Amended Petition dated March 21, 2017, is complete as evidenced by entry of the amended rule for CDD #1 by the Florida Secretary of State and the filing of a copy of the rule with the Clerk of Courts of Collier County, Florida. If the Amended Petition to amend CDD #1 is denied by FLAWAC or the rule amendment process by FLAWAC of a Rule amending CDD #1 is not complete by March 21, 2018, this Ordinance shall be rendered void.

PASSED AND DULY ADOPTED by the Board of County Commissioners of Collier County, Florida, this 9th day of May, 2017.

ATTEST:
DWIGHT E. BROCK, CLERK

By: *Dwight E. Brock*
Deputy Clerk

Attest as to Chairman's
signature only.

Approved as to form and legality:

Emily R. Pepin
Emily R. Pepin
Assistant County Attorney

BOARD OF COUNTY COMMISSIONERS
COLLIER COUNTY, FLORIDA

By: *Penny Taylor*
PENNY TAYLOR, CHAIRMAN



LEGAL DESCRIPTION:

A PARCEL OF LAND LOCATED IN A PORTION OF SECTIONS 11, 13 AND 14, TOWNSHIP 51 SOUTH, RANGE 26 EAST, AND A PORTION OF SECTION 18, TOWNSHIP 51 SOUTH, RANGE 27 EAST, ALL IN COLLIER COUNTY, FLORIDA, BEING MORE PARTICULARLY DESCRIBED AS FOLLOWS:

BEGINNING AT THE NORTHWEST CORNER OF SECTION 13, TOWNSHIP 51 SOUTH, RANGE 26 EAST, COLLIER COUNTY, FLORIDA; THENCE RUN S.89°55'46"E. ALONG THE NORTH LINE OF SAID SECTION 13, FOR A DISTANCE OF 4,688.27 FEET TO A POINT ON THE SOUTHERLY RIGHT-OF-WAY LINE OF US 41 (TAMIAMI TRAIL) A 200 FOOT RIGHT-OF-WAY; THENCE RUN S.54°21'29"E. ALONG THE SOUTHERLY RIGHT-OF-WAY OF SAID US 41, FOR A DISTANCE OF 3,793.58 FEET; THENCE RUN S.35°39'17"W., FOR A DISTANCE OF 107.40 FEET TO A POINT ON A CIRCULAR CURVE, CONCAVE WESTERLY WHOSE RADIUS POINT BEARS S.44°05'24"W., THEREFROM; THENCE RUN SOUTHERLY, ALONG THE ARC OF SAID CURVE TO THE RIGHT, HAVING A RADIUS OF 350.00 FEET, THROUGH A CENTRAL ANGLE OF 66°22'03", SUBTENDED BY A CHORD OF 383.13 FEET AT A BEARING OF S.12°43'35"E., FOR A DISTANCE OF 405.42 FEET TO A POINT OF REVERSE CURVE, CONCAVE NORTHEASTERLY; THENCE RUN SOUTHEASTERLY, ALONG THE ARC OF SAID CURVE TO THE LEFT, HAVING A RADIUS OF 150.00 FEET, THROUGH A CENTRAL ANGLE OF 110°27'50", SUBTENDED BY A CHORD OF 246.44 FEET AT A BEARING OF S.34°46'28"E., FOR A DISTANCE OF 289.19 FEET TO THE END OF SAID CURVE; THENCE RUN N.89°59'37"E., FOR A DISTANCE OF 58.44 FEET TO THE BEGINNING OF A TANGENTIAL CIRCULAR CURVE, CONCAVE NORTHERLY; THENCE RUN NORTHEASTERLY, ALONG THE ARC OF SAID CURVE TO THE LEFT, HAVING A RADIUS OF 20.00 FEET, THROUGH A CENTRAL ANGLE OF 52°30'17", SUBTENDED BY A CHORD OF 17.69 FEET AT A BEARING OF N.63°44'28"E., FOR A DISTANCE OF 18.33 FEET TO A POINT OF REVERSE CURVE, CONCAVE SOUTHEASTERLY; THENCE RUN NORTHEASTERLY, ALONG THE ARC OF SAID CURVE TO THE RIGHT, HAVING A RADIUS OF 95.00 FEET, THROUGH A CENTRAL ANGLE OF 15°00'34", SUBTENDED BY A CHORD OF 24.82 FEET AT A BEARING OF N.44°59'37"E., FOR A DISTANCE OF 24.89 FEET TO A POINT OF REVERSE CURVE, CONCAVE NORTHWESTERLY; THENCE RUN NORTHEASTERLY, ALONG THE ARC OF SAID CURVE TO THE LEFT, HAVING A RADIUS OF 20.00 FEET, THROUGH A CENTRAL ANGLE OF 52°30'17", SUBTENDED BY A CHORD OF 17.69 FEET AT A BEARING OF N.26°14'45"E., FOR A DISTANCE OF 18.33 FEET TO THE END OF SAID CURVE; THENCE RUN N.89°59'37"E., FOR A DISTANCE OF 100.00 FEET TO A POINT ON A CIRCULAR CURVE, CONCAVE NORTHEASTERLY; WHOSE RADIUS POINT BEARS N.89°59'37"E., THEREFROM; THENCE RUN SOUTHEASTERLY, ALONG THE ARC OF SAID CURVE TO THE LEFT, HAVING A RADIUS OF 20.00 FEET, THROUGH A CENTRAL ANGLE OF 52°30'17", SUBTENDED BY A CHORD OF 17.69 FEET AT A BEARING OF S.26°15'32"E., FOR A DISTANCE OF 18.33 FEET TO A POINT OF REVERSE CURVE, CONCAVE SOUTHWESTERLY; THENCE RUN SOUTHEASTERLY, ALONG THE ARC OF SAID CURVE TO THE RIGHT, HAVING A RADIUS OF 95.00 FEET, THROUGH A CENTRAL ANGLE OF 15°00'34", SUBTENDED BY A CHORD OF 24.82 FEET AT A BEARING OF S.45°00'23"E., FOR A DISTANCE OF 24.89 FEET TO A POINT OF REVERSE CURVE, CONCAVE NORTHEASTERLY; THENCE RUN SOUTHEASTERLY, ALONG THE ARC OF SAID CURVE TO THE LEFT, HAVING A RADIUS OF 20.00 FEET, THROUGH A CENTRAL ANGLE OF 52°30'11", SUBTENDED BY A CHORD OF 17.69 FEET AT A BEARING OF S.63°45'11"E., FOR A DISTANCE OF 18.33 FEET TO THE END OF SAID CURVE; THENCE RUN S.00°00'23"E., FOR A DISTANCE OF 130.00 FEET; THENCE RUN N.89°59'37"E.,



FOR A DISTANCE OF 113.79 FEET; THENCE RUN S.00°00'23"E., FOR A DISTANCE OF 150.36 FEET TO THE BEGINNING OF A TANGENTIAL CIRCULAR CURVE, CONCAVE WESTERLY; THENCE RUN SOUTHERLY, ALONG THE ARC OF SAID CURVE TO THE RIGHT, HAVING A RADIUS OF 320.00 FEET, THROUGH A CENTRAL ANGLE OF 29°39'13", SUBTENDED BY A CHORD OF 163.77 FEET AT A BEARING OF S.14°49'13"W., FOR A DISTANCE OF 165.62 FEET TO A POINT OF COMPOUND CURVE CONCAVE NORTHWESTERLY; THENCE RUN SOUTHWESTERLY, ALONG THE ARC OF SAID CURVE TO THE RIGHT, HAVING A RADIUS OF 1190.00 FEET, THROUGH A CENTRAL ANGLE OF 18°36'36", SUBTENDED BY A CHORD OF 384.82 FEET AT A BEARING OF S.38°57'08"W., FOR A DISTANCE OF 386.52 FEET TO A POINT OF COMPOUND CURVE CONCAVE SOUTHWESTERLY WHOSE RADIUS POINT BEARS S.15°24'12"W., THEREFROM; THENCE RUN SOUTHEASTERLY, ALONG THE ARC OF SAID CURVE TO THE RIGHT, HAVING A RADIUS OF 45.00 FEET, THROUGH A CENTRAL ANGLE OF 59°39'38", SUBTENDED BY A CHORD OF 44.77 FEET AT A BEARING OF S.44°45'59"E., FOR A DISTANCE OF 46.86 FEET TO A POINT OF REVERSE CURVE, CONCAVE NORTHEASTERLY; THENCE RUN SOUTHEASTERLY, ALONG THE ARC OF SAID CURVE TO THE LEFT, HAVING A RADIUS OF 62.58 FEET, THROUGH A CENTRAL ANGLE OF 18°38'25", SUBTENDED BY A CHORD OF 20.27 FEET AT A BEARING OF S.24°15'23"E., FOR A DISTANCE OF 20.36 FEET TO A POINT OF REVERSE CURVE, CONCAVE WESTERLY; THENCE RUN SOUTHERLY, ALONG THE ARC OF SAID CURVE TO THE RIGHT, HAVING A RADIUS OF 45.00 FEET, THROUGH A CENTRAL ANGLE OF 61°46'37", SUBTENDED BY A CHORD OF 46.20 FEET AT A BEARING OF S.02°41'17"E., FOR A DISTANCE OF 48.52 FEET TO THE END OF SAID CURVE; THENCE RUN S.28°12'02"W., FOR A DISTANCE OF 70.46 FEET TO THE BEGINNING OF A TANGENTIAL CIRCULAR CURVE, CONCAVE EASTERLY; THENCE RUN SOUTHERLY, ALONG THE ARC OF SAID CURVE TO THE LEFT, HAVING A RADIUS OF 300.00 FEET, THROUGH A CENTRAL ANGLE OF 26°33'16", SUBTENDED BY A CHORD OF 137.80 FEET AT A BEARING OF S.14°55'24"W., FOR A DISTANCE OF 139.04 FEET TO A POINT OF REVERSE CURVE, CONCAVE NORTHWESTERLY; THENCE RUN SOUTHWESTERLY, ALONG THE ARC OF SAID CURVE TO THE RIGHT, HAVING A RADIUS OF 300.00 FEET, THROUGH A CENTRAL ANGLE OF 74°19'47", SUBTENDED BY A CHORD OF 362.47 FEET AT A BEARING OF S.38°48'40"W., FOR A DISTANCE OF 389.19 FEET TO A POINT OF REVERSE CURVE, CONCAVE SOUTHEASTERLY; THENCE RUN SOUTHWESTERLY, ALONG THE ARC OF SAID CURVE TO THE LEFT, HAVING A RADIUS OF 300.00 FEET, THROUGH A CENTRAL ANGLE OF 85°58'55", SUBTENDED BY A CHORD OF 409.13 FEET AT A BEARING OF S.32°59'06"W., FOR A DISTANCE OF 450.20 FEET TO A POINT OF REVERSE CURVE, CONCAVE NORTHERLY; THENCE RUN SOUTHWESTERLY, ALONG THE ARC OF SAID CURVE TO THE RIGHT, HAVING A RADIUS OF 45.00 FEET, THROUGH A CENTRAL ANGLE OF 111°49'56", SUBTENDED BY A CHORD OF 74.54 FEET AT A BEARING OF S.45°54'37"W., FOR A DISTANCE OF 87.83 FEET TO THE END OF SAID CURVE; THENCE RUN N.78°10'25"W., FOR A DISTANCE OF 194.68 FEET TO THE BEGINNING OF A TANGENTIAL CIRCULAR CURVE, CONCAVE EASTERLY; THENCE RUN NORTHERLY, ALONG THE ARC OF SAID CURVE TO THE RIGHT, HAVING A RADIUS OF 45.00 FEET, THROUGH A CENTRAL ANGLE OF 116°41'28", SUBTENDED BY A CHORD OF 76.61 FEET AT A BEARING OF N.19°49'41"W., FOR A DISTANCE OF 91.65 FEET TO THE END OF SAID CURVE; THENCE RUN N.38°31'03"E., FOR A DISTANCE OF 111.08 FEET; THENCE RUN N.51°28'57"W., FOR A DISTANCE OF 105.27 FEET TO A POINT ON A CIRCULAR CURVE, CONCAVE NORTHERLY; WHOSE RADIUS POINT BEARS N.49°16'14"W., THEREFROM; THENCE RUN WESTERLY, ALONG THE ARC OF SAID CURVE TO THE RIGHT, HAVING A RADIUS OF 385.00 FEET, THROUGH A CENTRAL ANGLE OF 75°57'07", SUBTENDED BY A CHORD OF 449.19 FEET AT A BEARING OF S.78°42'20"W., FOR A



DISTANCE OF 483.85 FEET TO A POINT OF COMPOUND CURVE CONCAVE WESTERLY; WHOSE RADIUS POINT BEARS S.53°08'27"W., THEREFROM; THENCE RUN SOUTHERLY, ALONG THE ARC OF SAID CURVE TO THE RIGHT, HAVING A RADIUS OF 45.00 FEET, THROUGH A CENTRAL ANGLE OF 107°40'34", SUBTENDED BY A CHORD OF 72.66 FEET AT A BEARING OF S.16°58'44"W., FOR A DISTANCE OF 84.57 FEET TO A POINT OF REVERSE CURVE, CONCAVE SOUTHEASTERLY; WHOSE RADIUS POINT BEARS S.18°51'32"E., THEREFROM; THENCE RUN SOUTHWESTERLY, ALONG THE ARC OF SAID CURVE TO THE LEFT, HAVING A RADIUS OF 260.00 FEET, THROUGH A CENTRAL ANGLE OF 74°43'05", SUBTENDED BY A CHORD OF 315.54 FEET AT A BEARING OF S.33°46'55"W., FOR A DISTANCE OF 339.06 FEET TO THE END OF SAID CURVE; THENCE RUN S.03°34'37"E., FOR A DISTANCE OF 87.88 FEET TO THE BEGINNING OF A TANGENTIAL CIRCULAR CURVE, CONCAVE NORTHWESTERLY; THENCE RUN SOUTHWESTERLY, ALONG THE ARC OF SAID CURVE TO THE RIGHT, HAVING A RADIUS OF 225.00 FEET, THROUGH A CENTRAL ANGLE OF 94°37'47", SUBTENDED BY A CHORD OF 330.79 FEET AT A BEARING OF S.43°44'16"W., FOR A DISTANCE OF 371.61 FEET TO THE END OF SAID CURVE; THENCE RUN N.88°56'50"W., FOR A DISTANCE OF 322.37 FEET TO THE BEGINNING OF A TANGENTIAL CIRCULAR CURVE, CONCAVE NORTHERLY; THENCE RUN WESTERLY, ALONG THE ARC OF SAID CURVE TO THE RIGHT, HAVING A RADIUS OF 285.00 FEET, THROUGH A CENTRAL ANGLE OF 18°35'10", SUBTENDED BY A CHORD OF 92.05 FEET AT A BEARING OF N.79°39'15"W., FOR A DISTANCE OF 92.45 FEET TO THE END OF SAID CURVE; THENCE RUN N.88°56'39"W., FOR A DISTANCE OF 664.33 FEET; THENCE RUN N.88°56'39"W., FOR A DISTANCE OF 164.75 FEET TO THE BEGINNING OF A TANGENTIAL CIRCULAR CURVE, CONCAVE SOUTHERLY; THENCE RUN WESTERLY, ALONG THE ARC OF SAID CURVE TO THE LEFT, HAVING A RADIUS OF 80.00 FEET, THROUGH A CENTRAL ANGLE OF 34°37'19", SUBTENDED BY A CHORD OF 47.61 FEET AT A BEARING OF S.73°44'42"W., FOR A DISTANCE OF 48.34 FEET TO A POINT OF COMPOUND CURVE CONCAVE EASTERLY; WHOSE RADIUS POINT BEARS S.66°50'38"E., THEREFROM; THENCE RUN SOUTHERLY, ALONG THE ARC OF SAID CURVE TO THE LEFT, HAVING A RADIUS OF 141.52 FEET, THROUGH A CENTRAL ANGLE OF 50°15'07", SUBTENDED BY A CHORD OF 120.18 FEET AT A BEARING OF S.01°58'11"E., FOR A DISTANCE OF 124.12 FEET TO A POINT OF REVERSE CURVE, CONCAVE WESTERLY WHOSE RADIUS POINT BEARS S.62°57'42"W., THEREFROM; THENCE RUN SOUTHERLY, ALONG THE ARC OF SAID CURVE TO THE RIGHT, HAVING A RADIUS OF 221.41 FEET, THROUGH A CENTRAL ANGLE OF 10°10'21", SUBTENDED BY A CHORD OF 39.26 FEET AT A BEARING OF S.21°57'07"E., FOR A DISTANCE OF 39.31 FEET TO A POINT OF CUSP; THENCE RUN N.77°46'12"W., FOR A DISTANCE OF 239.43 FEET; THENCE RUN N.88°51'53"W., FOR A DISTANCE OF 636.47 FEET; THENCE RUN S.45°53'28"W., FOR A DISTANCE OF 58.20 FEET TO A POINT ON A CIRCULAR CURVE, CONCAVE NORTHWESTERLY, WHOSE RADIUS POINT BEARS S.66°02'35"W., A DISTANCE OF 150.00 FEET THEREFROM; THENCE RUN SOUTHWESTERLY ALONG THE ARC OF SAID CURVE TO THE RIGHT, HAVING A RADIUS OF 150.00 FEET, THROUGH A CENTRAL ANGLE OF 119°47'34", SUBTENDED BY A CHORD OF 259.54 FEET AT A BEARING OF S.35°56'21"W., FOR A DISTANCE OF 313.62 FEET TO THE END OF SAID CURVE; THENCE RUN S.07°24'26"E., FOR A DISTANCE OF 32.73 FEET; THENCE RUN N.71°08'30"W., FOR A DISTANCE OF 278.51 FEET; THENCE RUN N.49°32'33"W., FOR A DISTANCE OF 115.86 FEET; THENCE RUN N.73°21'57"W., FOR A DISTANCE OF 121.18 FEET; THENCE RUN N.47°48'15"W., FOR A DISTANCE OF 115.86 FEET; THENCE RUN N.62°56'36"W., FOR A DISTANCE OF 260.80 FEET; THENCE RUN S.67°49'42"W., FOR A DISTANCE OF 55.38 FEET TO A POINT ON A CIRCULAR CURVE, CONCAVE SOUTHWESTERLY, WHOSE RADIUS POINT BEARS S.70°23'14"W., A DISTANCE OF 60.00



950 Encore Way • Naples, Florida 34110 • Phone 239.254.2000 • Fax: 239.254.2099

FEET THEREFROM; THENCE RUN NORTHWESTERLY ALONG THE ARC OF SAID CURVE TO THE LEFT, HAVING A RADIUS OF 60.00 FEET, THROUGH A CENTRAL ANGLE OF 29°33'16", SUBTENDED BY A CHORD OF 30.61 FEET AT A BEARING OF N.34°23'24"W., FOR A DISTANCE OF 30.95 FEET TO THE END OF SAID CURVE; THENCE RUN N.49°10'02"W., FOR A DISTANCE OF 79.40 FEET TO THE BEGINNING OF A TANGENTIAL CIRCULAR CURVE, CONCAVE NORTHEASTERLY; THENCE RUN NORTHWESTERLY ALONG THE ARC OF SAID CURVE TO THE RIGHT, HAVING A RADIUS OF 220.00 FEET, THROUGH A CENTRAL ANGLE OF 16°47'51", SUBTENDED BY A CHORD OF 64.27 FEET AT A BEARING OF N.40°48'06"W., FOR A DISTANCE OF 64.50 FEET TO A POINT OF COMPOUND CURVE, CONCAVE EASTERLY; THENCE RUN NORTHERLY, ALONG THE ARC OF SAID CURVE TO THE RIGHT, HAVING A RADIUS OF 30.00 FEET, THROUGH A CENTRAL ANGLE OF 45°48'11", SUBTENDED BY A CHORD OF 23.35 FEET AT A BEARING OF N.09°28'05"W., FOR A DISTANCE OF 23.98 FEET TO THE END OF SAID CURVE; THENCE RUN N.13°26'00"E., FOR A DISTANCE OF 25.35 FEET TO THE BEGINNING OF A TANGENTIAL CIRCULAR CURVE, CONCAVE SOUTHWESTERLY; THENCE RUN NORTHWESTERLY ALONG THE ARC OF SAID CURVE TO THE LEFT, HAVING A RADIUS OF 95.00 FEET, THROUGH A CENTRAL ANGLE OF 134°11'52", SUBTENDED BY A CHORD OF 175.02 FEET AT A BEARING OF N.53°39'55"W., FOR A DISTANCE OF 222.51 FEET TO THE END OF SAID CURVE; THENCE RUN S.59°14'09"W., FOR A DISTANCE OF 95.48 FEET TO THE BEGINNING OF A TANGENTIAL CIRCULAR CURVE, CONCAVE NORTHERLY; THENCE RUN WESTERLY ALONG THE ARC OF SAID CURVE TO THE RIGHT, HAVING A RADIUS OF 155.00 FEET, THROUGH A CENTRAL ANGLE OF 70°01'59", SUBTENDED BY A CHORD OF 177.88 FEET AT A BEARING OF N.85°44'52"W., FOR A DISTANCE OF 189.46 FEET TO A POINT OF REVERSE CURVE, CONCAVE SOUTHERLY; THENCE RUN WESTERLY, ALONG THE ARC OF SAID CURVE TO THE LEFT, HAVING A RADIUS OF 260.00 FEET, THROUGH A CENTRAL ANGLE OF 36°36'21", SUBTENDED BY A CHORD OF 163.30 FEET AT A BEARING OF N.69°02'03"W., FOR A DISTANCE OF 166.11 FEET TO THE END OF SAID CURVE; THENCE RUN N.87°20'14"W., FOR A DISTANCE OF 76.56 FEET TO THE BEGINNING OF A TANGENTIAL CIRCULAR CURVE, CONCAVE NORTHEASTERLY; THENCE RUN NORTHWESTERLY ALONG THE ARC OF SAID CURVE TO THE RIGHT, HAVING A RADIUS OF 30.00 FEET, THROUGH A CENTRAL ANGLE OF 80°17'08", SUBTENDED BY A CHORD OF 38.68 FEET AT A BEARING OF N.47°11'40"W., FOR A DISTANCE OF 42.04 FEET TO THE END OF SAID CURVE; THENCE RUN N.07°03'06"W., FOR A DISTANCE OF 61.34 FEET TO THE BEGINNING OF A TANGENTIAL CIRCULAR CURVE, CONCAVE SOUTHWESTERLY; THENCE RUN NORTHWESTERLY ALONG THE ARC OF SAID CURVE TO THE LEFT, HAVING A RADIUS OF 60.00 FEET, THROUGH A CENTRAL ANGLE OF 62°31'37", SUBTENDED BY A CHORD OF 62.28 FEET AT A BEARING OF N.38°18'54"W., FOR A DISTANCE OF 65.48 FEET TO THE END OF SAID CURVE; THENCE RUN N.69°34'43"W., FOR A DISTANCE OF 43.13 FEET TO THE BEGINNING OF A TANGENTIAL CIRCULAR CURVE, CONCAVE SOUTHEASTERLY; THENCE RUN SOUTHWESTERLY ALONG THE ARC OF SAID CURVE TO THE LEFT, HAVING A RADIUS OF 100.00 FEET, THROUGH A CENTRAL ANGLE OF 118°44'05", SUBTENDED BY A CHORD OF 170.29 FEET AT A BEARING OF S.52°03'15"W., FOR A DISTANCE OF 203.74 FEET TO THE END OF SAID CURVE; THENCE RUN N.55°53'04"W., FOR A DISTANCE 315.24 FEET TO A POINT ON A CIRCULAR CURVE, CONCAVE NORTHWESTERLY, WHOSE RADIUS POINT BEARS N.23°50'44"W., A DISTANCE OF 70.00 FEET THEREFROM; THENCE RUN NORTHEASTERLY ALONG THE ARC OF SAID CURVE TO THE LEFT, HAVING A RADIUS OF 70.00 FEET, THROUGH A CENTRAL ANGLE OF 47°56'15", SUBTENDED BY A CHORD OF 56.87 FEET AT A BEARING OF N.42°11'08"E., FOR A DISTANCE OF 58.57 FEET TO A POINT OF COMPOUND CURVE, CONCAVE

C:\Users\JohnHilton\Desktop\ICDD2 OVERALL 3-10-14.doc



950 Encore Way • Naples, Florida 34110 • Phone 239.254.2000 • Fax: 239.254.2099

WESTERLY; THENCE RUN NORTHERLY, ALONG THE ARC OF SAID CURVE TO THE LEFT, HAVING A RADIUS OF 170.00 FEET, THROUGH A CENTRAL ANGLE OF 46°13'15", SUBTENDED BY A CHORD OF 133.45 FEET AT A BEARING OF N.04°53'37"W., FOR A DISTANCE OF 137.14 FEET TO THE END OF SAID CURVE; THENCE RUN N.28°00'14"W., FOR A DISTANCE OF 88.72 FEET TO THE BEGINNING OF A TANGENTIAL CIRCULAR CURVE, CONCAVE SOUTHWESTERLY; THENCE RUN NORTHWESTERLY ALONG THE ARC OF SAID CURVE TO THE LEFT, HAVING A RADIUS OF 250.00 FEET, THROUGH A CENTRAL ANGLE OF 60°36'36", SUBTENDED BY A CHORD OF 252.30 FEET AT A BEARING OF N.58°18'32"W., FOR A DISTANCE OF 264.46 FEET TO THE END OF SAID CURVE; THENCE RUN N.88°36'51"W., FOR A DISTANCE OF 147.41 FEET TO THE BEGINNING OF A TANGENTIAL CIRCULAR CURVE, CONCAVE SOUTHEASTERLY; THENCE RUN SOUTHWESTERLY ALONG THE ARC OF SAID CURVE TO THE LEFT, HAVING A RADIUS OF 60.00 FEET, THROUGH A CENTRAL ANGLE OF 103°58'48", SUBTENDED BY A CHORD OF 94.55 FEET AT A BEARING OF S.39°23'46"W., FOR A DISTANCE OF 108.89 FEET TO A POINT OF REVERSE CURVE, CONCAVE WESTERLY; THENCE RUN SOUTHERLY, ALONG THE ARC OF SAID CURVE TO THE RIGHT, HAVING A RADIUS OF 200.00 FEET, THROUGH A CENTRAL ANGLE OF 35°43'08", SUBTENDED BY A CHORD OF 122.67 FEET AT A BEARING OF S.05°15'56"W., FOR A DISTANCE OF 124.68 FEET TO A POINT OF REVERSE CURVE, CONCAVE EASTERLY; THENCE RUN SOUTHERLY, ALONG THE ARC OF SAID CURVE TO THE LEFT, HAVING A RADIUS OF 135.00 FEET, THROUGH A CENTRAL ANGLE OF 47°59'49", SUBTENDED BY A CHORD OF 109.81 FEET AT A BEARING OF S.00°52'24"E., FOR A DISTANCE OF 113.09 FEET TO THE END OF SAID CURVE; THENCE RUN S.24°52'19"E., FOR A DISTANCE OF 39.34 FEET; THENCE RUN S.89°40'18"W., FOR A DISTANCE OF 193.51 FEET; THENCE RUN N.13°18'01"E., FOR A DISTANCE OF 14.29 FEET; THENCE RUN N.74°11'31"W., FOR A DISTANCE OF 69.02 FEET TO THE BEGINNING OF A TANGENTIAL CIRCULAR CURVE, CONCAVE NORTHEASTERLY; THENCE RUN NORTHWESTERLY ALONG THE ARC OF SAID CURVE TO THE RIGHT, HAVING A RADIUS OF 200.00 FEET, THROUGH A CENTRAL ANGLE OF 77°11'31", SUBTENDED BY A CHORD OF 249.53 FEET AT A BEARING OF N.35°35'46"W., FOR A DISTANCE OF 269.45 FEET TO THE END OF SAID CURVE; THENCE RUN N.03°00'00"E., FOR A DISTANCE OF 60.69 FEET TO THE BEGINNING OF A TANGENTIAL CIRCULAR CURVE, CONCAVE SOUTHWESTERLY; THENCE RUN NORTHWESTERLY ALONG THE ARC OF SAID CURVE TO THE LEFT, HAVING A RADIUS OF 35.00 FEET, THROUGH A CENTRAL ANGLE OF 91°37'44", SUBTENDED BY A CHORD OF 50.20 FEET AT A BEARING OF N.42°48'52"W., FOR A DISTANCE OF 55.97 FEET TO THE END OF SAID CURVE; THENCE RUN N.88°37'44"W., FOR A DISTANCE OF 109.05 FEET; THENCE RUN S.84°57'36"W., FOR A DISTANCE OF 58.87 FEET TO THE BEGINNING OF A TANGENTIAL CIRCULAR CURVE, CONCAVE SOUTHEASTERLY; THENCE RUN SOUTHWESTERLY ALONG THE ARC OF SAID CURVE TO THE LEFT, HAVING A RADIUS OF 45.00 FEET, THROUGH A CENTRAL ANGLE OF 109°47'15", SUBTENDED BY A CHORD OF 73.63 FEET AT A BEARING OF S.30°03'58"W., FOR A DISTANCE OF 86.23 FEET TO THE END OF SAID CURVE; THENCE RUN S.24°49'40"E., FOR A DISTANCE OF 92.45 FEET; THENCE RUN S.19°45'17"E., FOR A DISTANCE OF 120.70 FEET, TO THE BEGINNING OF A TANGENTIAL CIRCULAR CURVE, CONCAVE WESTERLY; THENCE RUN SOUTHERLY ALONG THE ARC OF SAID CURVE TO THE RIGHT, HAVING A RADIUS OF 20.00 FEET, THROUGH A CENTRAL ANGLE OF 37°39'13", SUBTENDED BY A CHORD OF 12.91 FEET AT A BEARING OF S.00°55'41"E., FOR A DISTANCE OF 13.14 FEET TO THE END OF SAID ; THENCE RUN S.17°53'56"W., FOR A DISTANCE OF 49.67 FEET TO THE BEGINNING OF A TANGENTIAL CIRCULAR CURVE, CONCAVE EASTERLY; THENCE RUN SOUTHERLY ALONG THE ARC OF SAID CURVE TO THE LEFT, HAVING A RADIUS OF 80.00 FEET, THROUGH A CENTRAL

C:\Users\JohnHilton\Desktop\CDD2 OVERALL 3-10-14.doc

EXHIBIT A

Page 5 of 15



ANGLE OF 70°28'21", SUBTENDED BY A CHORD OF 92.31 FEET AT A BEARING OF S.17°20'15"E., FOR A DISTANCE OF 98.40 FEET TO THE END OF SAID CURVE; THENCE RUN S.52°34'25"E., FOR A DISTANCE OF 25.66 FEET; THENCE RUN S.77°39'49"W., FOR A DISTANCE OF 931.61 FEET; THENCE RUN N.00°25'58"W., FOR A DISTANCE OF 2,870.69 FEET; THENCE RUN N.26°57'22"W., FOR A DISTANCE OF 100.00 FEET TO A POINT ON A CIRCULAR CURVE, CONCAVE NORTHERLY, WHOSE RADIUS POINT BEARS N.26°57'22"W., A DISTANCE OF 709.89 FEET THEREFROM; THENCE RUN WESTERLY ALONG THE ARC OF SAID CURVE TO THE RIGHT, HAVING A RADIUS OF 709.89 FEET, THROUGH A CENTRAL ANGLE OF 15°23'22", SUBTENDED BY A CHORD OF 190.10 FEET AT A BEARING OF S.70°44'19"W., FOR A DISTANCE OF 190.68 FEET TO THE END OF SAID CURVE AND TO A POINT ON THE WEST LINE OF SAID SECTION 13; THENCE RUN N.00°26'31"W. ALONG THE WEST LINE OF SAID SECTION 13, FOR A DISTANCE OF 495.62 FEET TO A POINT ON THE SOUTH LINE OF THE NORTH ONE QUARTER OF SECTION 14, TOWNSHIP 51 SOUTH, RANGE 26 EAST; THENCE RUN N.88°20'44"W. ALONG THE SOUTH LINE OF THE NORTH ONE QUARTER OF SAID SECTION 14, FOR A DISTANCE OF 692.50 FEET; THENCE RUN N.52°52'01"W., FOR A DISTANCE OF 173.23 FEET; THENCE RUN S.37°07'59"W., FOR A DISTANCE OF 123.46 FEET TO A POINT ON THE SOUTH LINE OF THE NORTH ONE QUARTER OF SAID SECTION 14; THENCE RUN N.88°20'44"W. ALONG THE SOUTH LINE OF THE NORTH ONE QUARTER OF SAID SECTION 14, FOR A DISTANCE OF 2,557.19 FEET TO A POINT ON THE WEST LINE OF THE EAST ONE HALF, OF THE NORTHEAST ONE QUARTER, OF THE NORTHWEST ONE QUARTER OF SAID SECTION 14; THENCE RUN N.00°02'07"E. ALONG THE WEST LINE OF THE EAST ONE HALF, OF THE NORTHEAST ONE QUARTER, OF THE NORTHWEST ONE QUARTER OF SAID SECTION 14, FOR A DISTANCE OF 1,389.88 FEET TO A POINT ON THE SOUTH LINE OF SECTION 11, TOWNSHIP 51 S., RANGE 26 E. COLLIER COUNTY FLORIDA; THENCE RUN N.88°05'43"W. ALONG THE SOUTH LINE OF SAID SECTION 11, FOR A DISTANCE OF 590.35 FEET; THENCE RUN N.01°43'02"E., FOR A DISTANCE OF 1,493.79 FEET; THENCE RUN S.88°09'55"E., FOR A DISTANCE OF 1,274.00 FEET; THENCE RUN S.88°09'46"E., FOR A DISTANCE OF 1374.52 FEET TO A POINT ON THE WEST LINE OF THE EAST ONE HALF OF THE SOUTHEAST ONE QUARTER OF SAID SECTION 11; THENCE RUN N.01°13'54"E. ALONG THE WEST LINE OF EAST ONE HALF OF THE SOUTHEAST ONE QUARTER AND ALONG THE WEST LINE OF THE SOUTHEAST ONE QUARTER OF THE NORTHEAST ONE QUARTER OF SAID SECTION 11, FOR A DISTANCE OF 1,860.10 FEET; THENCE RUN S.88°46'12"E., FOR A DISTANCE OF 518.33 FEET TO A POINT ON A CIRCULAR CURVE, CONCAVE EASTERLY, WHOSE RADIUS POINT BEARS N.88°32'40"E., A DISTANCE OF 350.00 FEET THEREFROM; THENCE RUN NORTHERLY ALONG THE ARC OF SAID CURVE TO THE RIGHT, HAVING A RADIUS OF 350.00 FEET, THROUGH A CENTRAL ANGLE OF 37°05'11", SUBTENDED BY A CHORD OF 222.61 FEET AT A BEARING OF N.17°05'16"E., FOR A DISTANCE OF 226.55 FEET TO THE END OF SAID CURVE; THENCE RUN N.35°37'51"E., FOR A DISTANCE OF 214.87 FEET TO A POINT ON THE SOUTHERLY RIGHT-OF-WAY LINE OF SAID US 41; THENCE RUN S.54°21'53"E. ALONG THE SOUTHERLY RIGHT-OF-WAY LINE OF SAID US 41, FOR A DISTANCE OF 807.97 FEET TO A POINT ON THE EAST LINE OF SAID SECTION 11; THENCE RUN S.01°00'06"W. ALONG THE EAST LINE OF SAID SECTION 11, FOR A DISTANCE OF 3,308.61 FEET, TO THE POINT OF BEGINNING; CONTAINING OR 1,079.00 ACRES, MORE OR LESS.



950 Encore Way • Naples, Florida 34110 • Phone 239.254.2000 • Fax: 239.254.2099

LESS AND EXCEPT:

A PARCEL OF LAND LOCATED IN A PORTION OF SECTION 14, TOWNSHIP 51 SOUTH, RANGE 26 EAST, COLLIER COUNTY, FLORIDA, BEING MORE PARTICULARLY DESCRIBED AS FOLLOWS:

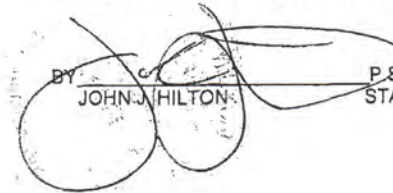
THE NORTHEAST ¼ OF THE NORTHEAST ¼ OF THE NORTHEAST ¼ OF SECTION 14, TOWNSHIP 51 SOUTH, RANGE 26 EAST, COLLIER COUNTY, FLORIDA, CONTAINING 10.906 ACRES, MORE OR LESS.

TOTAL ACRES OF THE OVERALL PARCEL IS 1068.09 ACRES, MORE OF LESS.

SUBJECT TO EASEMENTS AND RESTRICTIONS OF RECORD.

BEARINGS ARE BASED ON THE NORHT LINE OF SAID SECTION 13 AS BEING S.89°55'46"E.

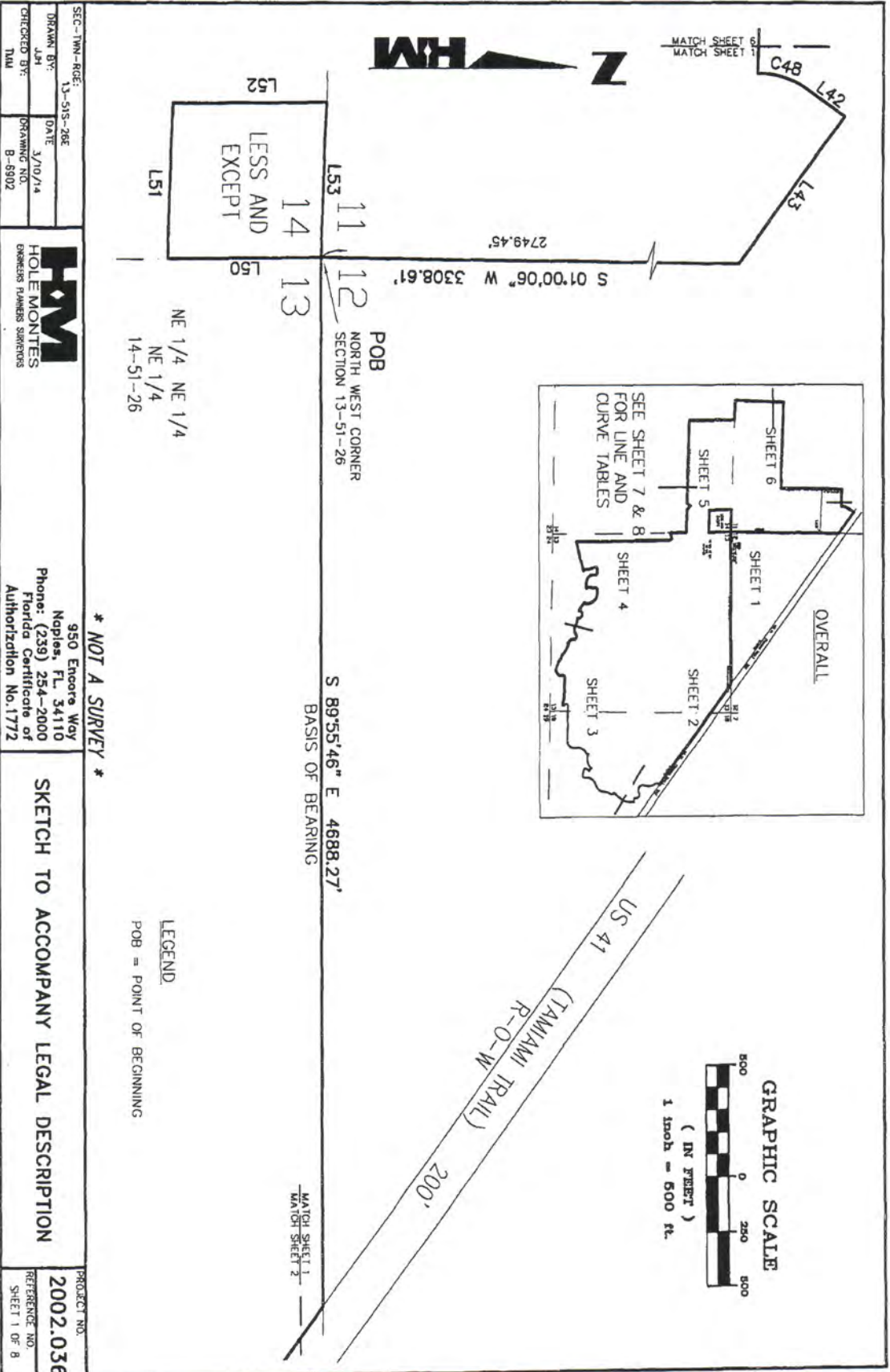
HOLE MONTES, INC.
CERTIFICATE OF AUTHORIZATION LB #1772

BY  P.S.M. #6278
JOHN J. HILTON STATE OF FLORIDA

C:\Users\John\lilton\Desktop\CDD2 OVERALL 3-10-14.doc

EXHIBIT A
Page 7 of 15

H:\200\S-Survey\Projects by Name of Location\FIDDLERS\2002036\LEGALS\CD02 OVERALL 3-10-14.dwg Tab: SHEET 1 Mar 11, 2014 - 2:55pm Plotted by: JohnHiten



SEC-TOWN-RGEE: 13-51S-26E
 DRAWN BY: JHM
 CHECKED BY: TMM

DATE: 3/10/14
 DRAWING NO.: B-6902

HOM
 HOLE MONTES
 ENGINEERS PLANNERS SURVEYORS

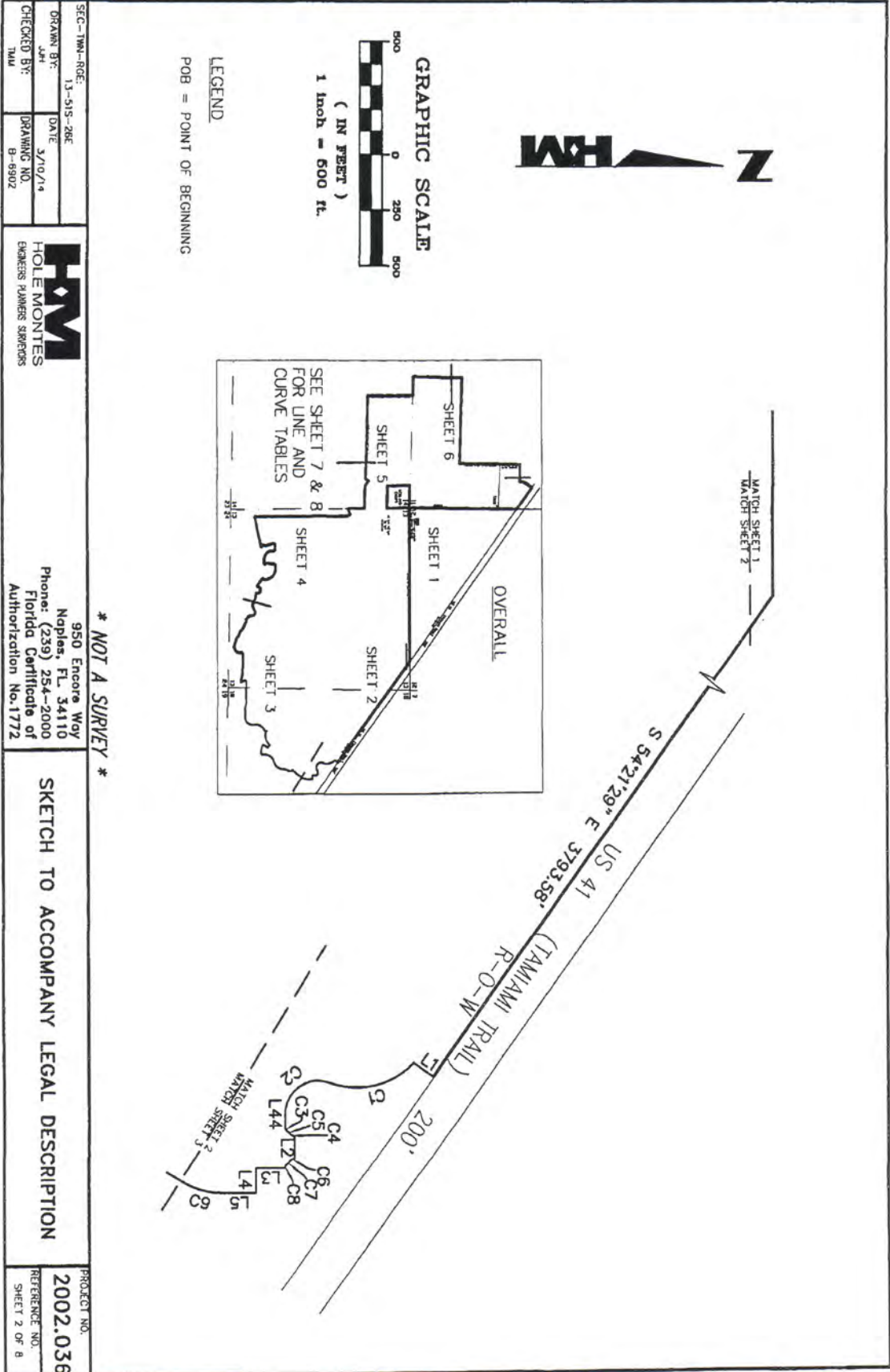
950 Encore Way
 Naples, FL 34110
 Phone: (239) 254-2000
 Florida Certificate of
 Authorization No.1772

PROJECT NO. 2002.036
 REFERENCE NO. SHEET 1 OF 8

* NOT A SURVEY *

SKETCH TO ACCOMPANY LEGAL DESCRIPTION

H:\8200\5-Survey\Projects by Name of Location\FOLDERS\2002036\LEGALS\CDD2 OVERALL 3-10-14.dwg Tab: SHEET 2 Mar 11, 2014 - 2:56pm Plotted by: JohnHilton



SEC-TM-RGE: 13-515-26E
 DRAWN BY: JHM
 DATE: 3/10/14
 CHECKED BY: JHM
 DRAWING NO: B-9302



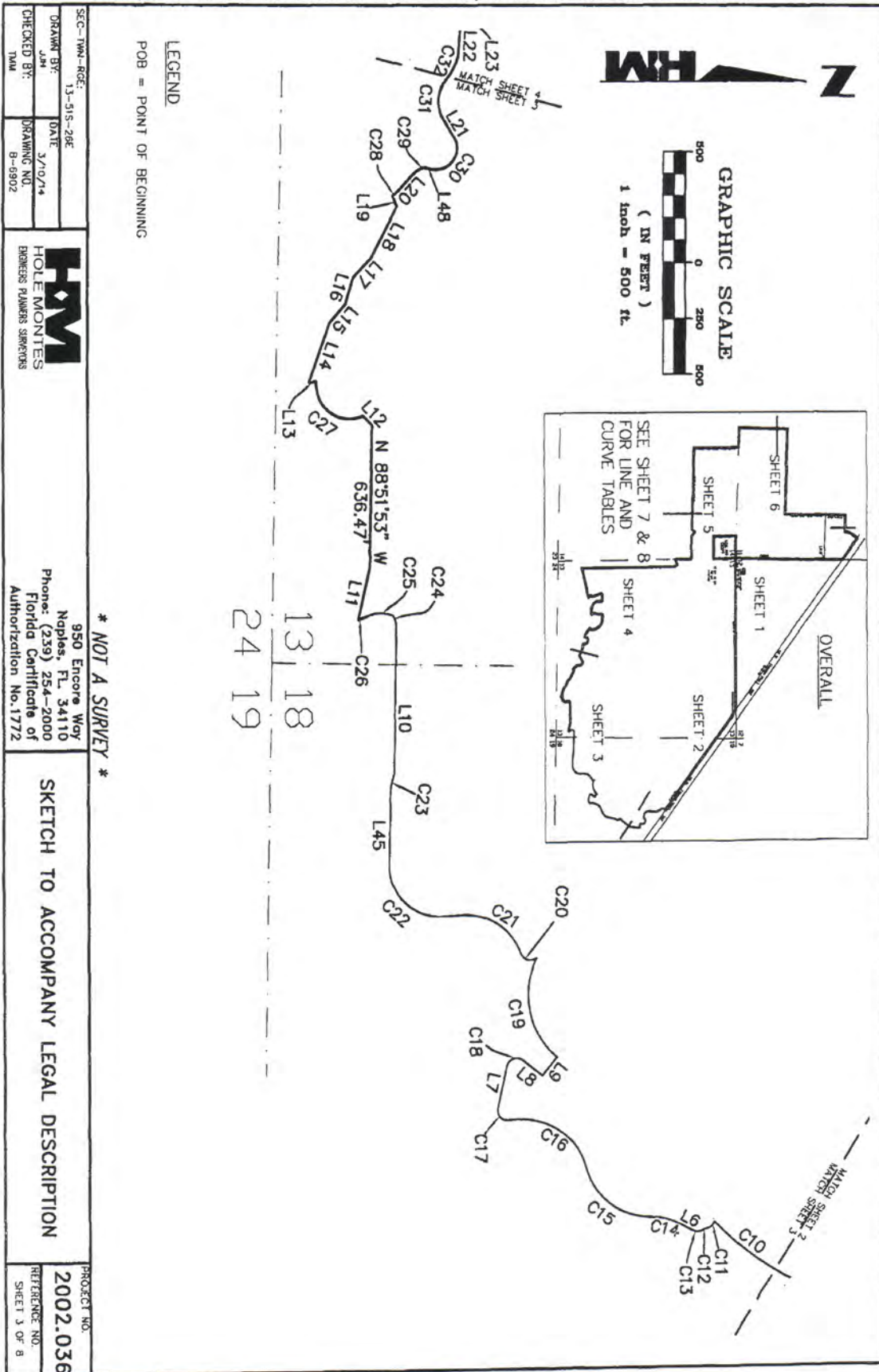
950 Encore Way
 Naples, FL 34110
 Phone: (239) 254-2000
 Florida Certificate of
 Authorization No. 1772

*** NOT A SURVEY ***

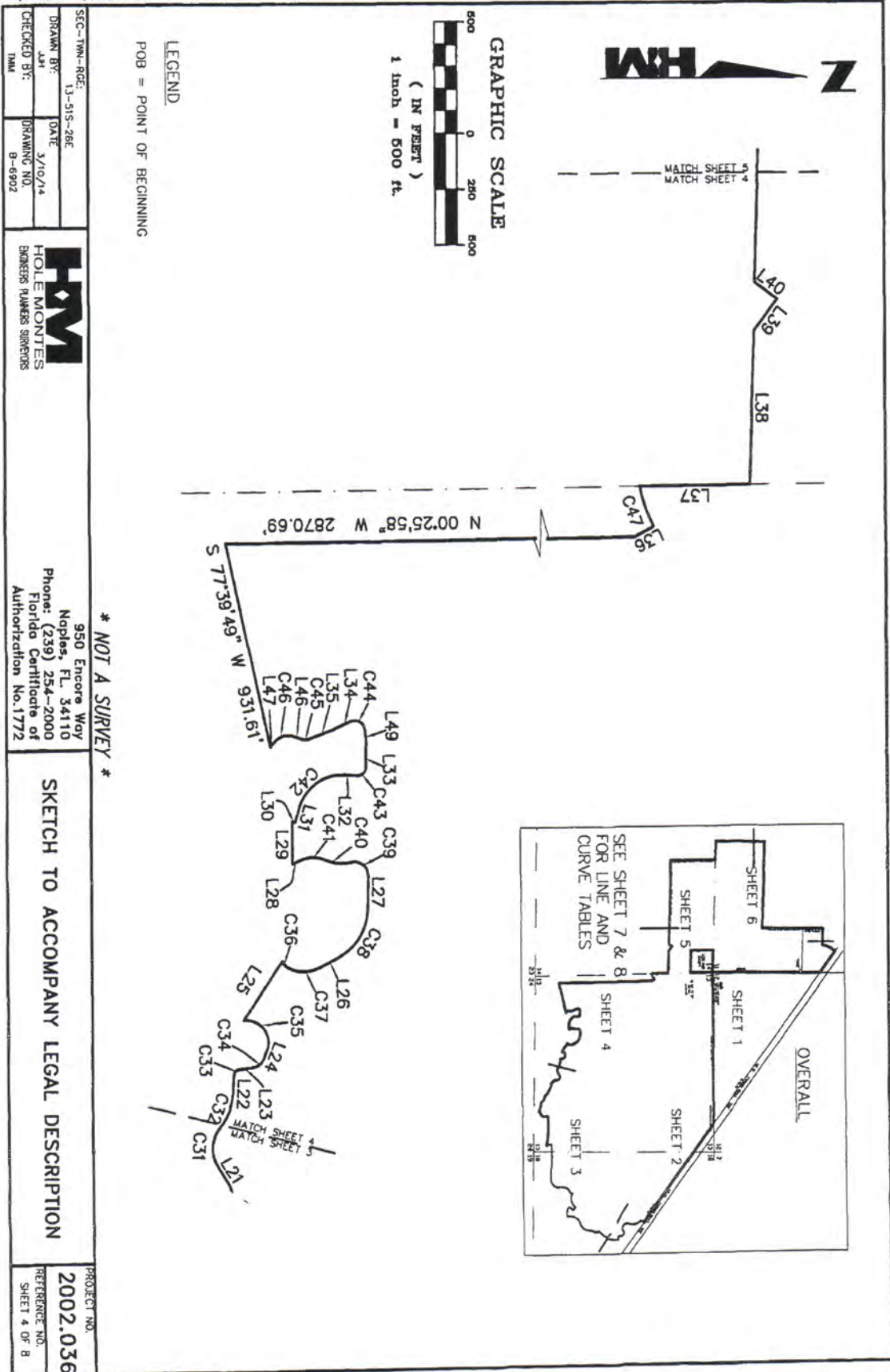
SKETCH TO ACCOMPANY LEGAL DESCRIPTION

PROJECT NO. 2002.036
 REFERENCE NO. SHEET 2 OF 8

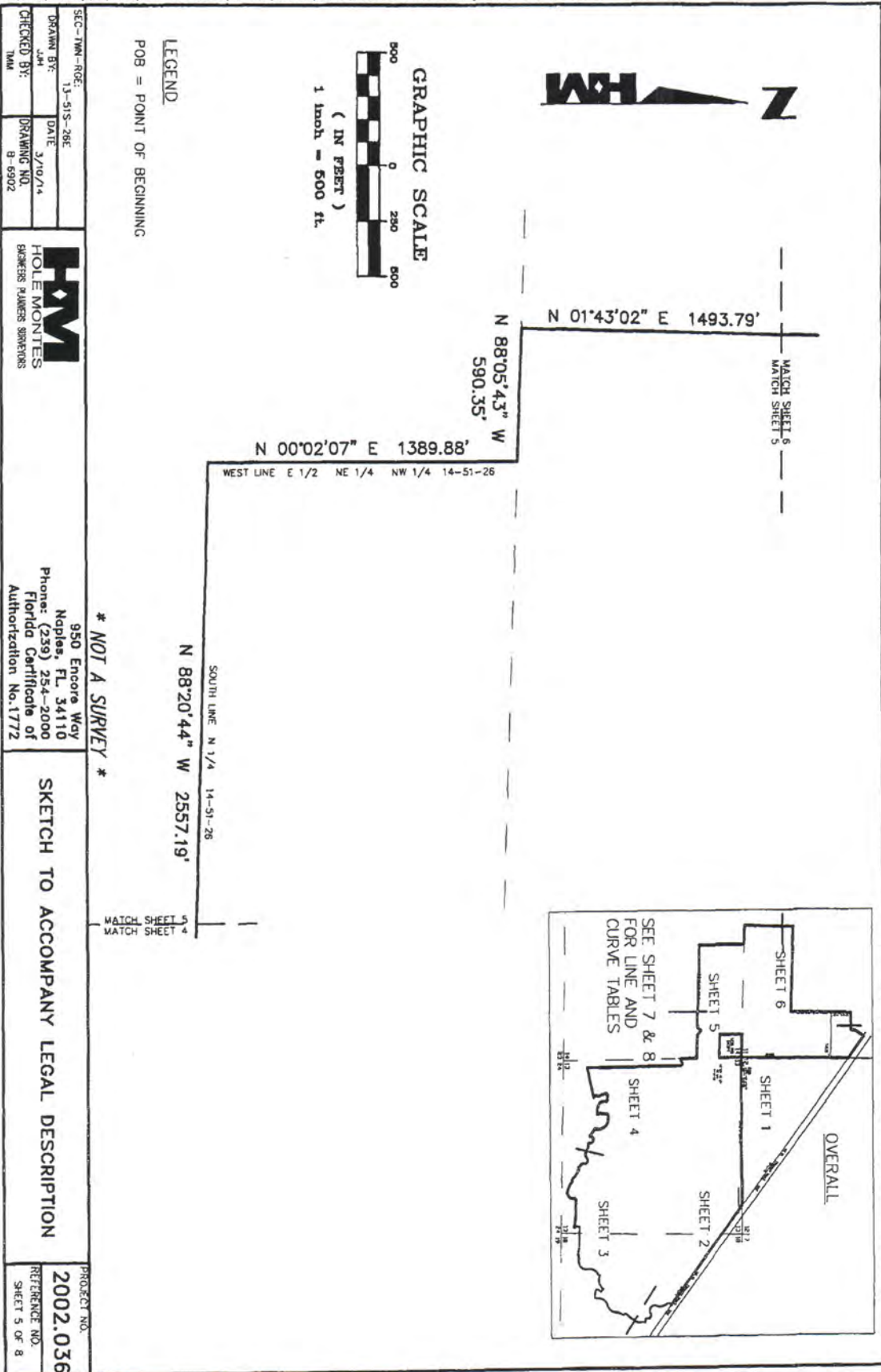
H:\200\5-Survey\Projects by Name of Location\FDDLERS\2002036\LEGALS\CD02 OVERALL 3-10-14.dwg Tab: SHEET 3 Mar 11, 2014 - 2:56pm Plotted by: JohnHilton



H:\B200\5-Survey\Projects by Name of Location\FIDDLERS\2002036\LEGALS\CDD2 OVERALL 3-10-14.dwg Tab: SHEET 4 Mar 11, 2014 - 2:56pm Plotted by: JohnHilton



H:\B200\5-Survey\Projects by Name of Location\FIDDLERS\2002036\LEGALS\CDD2 OVERALL 3-10-14.dwg Tab: SHEET 5 Mar 11, 2014 - 2:56pm Plotted by: JohnHilton



| | | |
|-------------------------|--------------------|---------------|
| SEC-TWM-ROE: 13-51S-26E | DRAWN BY: JHM | DATE: 3/10/14 |
| CHECKED BY: TAM | DRAWING NO. B-6902 | |



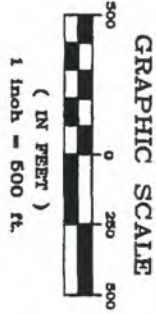
950 Encore Way
 Naples, FL 34110
 Phone: (239) 254-2000
 Florida Certificate of
 Authorization No. 1772

* NOT A SURVEY *

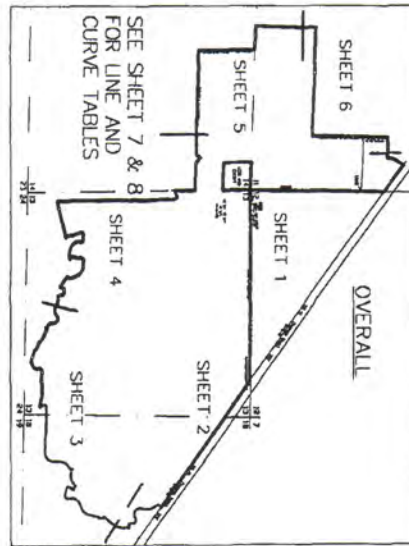
SKETCH TO ACCOMPANY LEGAL DESCRIPTION

| |
|----------------------------|
| PROJECT NO. 2002.036 |
| REFERENCE NO. SHEET 5 OF 8 |

H:\200\S-Survey\Projects by Name of Location\FOLDERS\2002036\LEGALS\CD02 OVERALL 3-10-14.dwg Tab: SHEET 6 Mar 11, 2014 - 2:56pm Plotted by: JohnHilton



LEGEND
POB = POINT OF BEGINNING



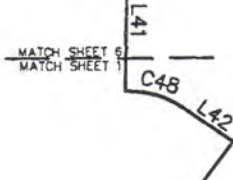
S 88°09'55" E 1274.00'

S 88°09'46" E 1374.52'

N 01°13'54" E 1860.10'

WEST LINE E 1/2 SE 1/4 11-51-26

WEST LINE SE 1/4 NE 1/4 11-51-26



| | |
|--------------|------------|
| SEC-TWN-RGE: | 13-51S-26E |
| DRAWN BY: | LHM |
| CHECKED BY: | TMM |
| DATE: | 3/10/14 |
| DRAWING NO.: | B-6902 |



950 Encore Way
Naples, FL 34110
Phone: (239) 254-2000
Florida Certificate of
Authorization No. 1772

SKETCH TO ACCOMPANY LEGAL DESCRIPTION

| | |
|----------------|--------------|
| PROJECT NO.: | 2002.036 |
| REFERENCE NO.: | SHEET 6 OF 8 |

* NOT A SURVEY *

H:\B200\5-Survey\Projects by Name of Location\FIDDLERS\2002036\LEGALS\CD02 OVERALL 3-10-14.dwg Tab: SHEET 7 Mar 11, 2014 -- 2:56pm Plotted by: JohnHilton

| LINE | BEARING | DISTANCE |
|------|---------------|----------|
| L1 | S 35.39'17" W | 107.40' |
| L2 | N 89.59'37" E | 100.00' |
| L3 | S 00'00'23" E | 130.00' |
| L4 | N 89.59'37" E | 113.79' |
| L5 | S 00'00'23" E | 150.36' |
| L6 | S 28'12'02" W | 70.46' |
| L7 | N 78'10'25" W | 194.68' |
| L8 | N 38'31'03" E | 111.08' |
| L9 | N 51'28'57" W | 105.27' |
| L10 | N 88'56'39" W | 664.33' |
| L11 | N 77'46'12" W | 239.43' |
| L12 | S 45'53'28" W | 58.20' |
| L13 | S 07'24'26" E | 32.73' |
| L14 | N 71'08'30" W | 278.51' |
| L15 | N 49'32'33" W | 115.86' |
| L16 | N 73'21'57" W | 121.18' |
| L17 | N 47'48'15" W | 115.86' |
| L18 | N 62'56'36" W | 260.80' |
| L19 | S 67'49'42" W | 55.38' |
| L20 | N 49'10'02" W | 79.40' |
| L21 | S 59'14'09" W | 95.48' |
| L22 | N 87'20'14" W | 76.56' |
| L23 | N 07'03'06" W | 61.34' |
| L24 | N 69'34'43" W | 43.13' |
| L25 | N 55'53'04" W | 315.24' |
| L26 | N 28'00'14" W | 88.72' |
| L27 | N 88'36'51" W | 147.41' |
| L28 | S 24'52'19" E | 39.34' |
| L29 | S 89'40'18" W | 193.51' |
| L30 | N 13'18'01" E | 14.29' |
| L31 | N 74'11'31" W | 69.02' |
| L32 | N 03'00'00" E | 60.69' |
| L33 | N 88'37'44" W | 109.05' |
| L34 | S 24'49'40" E | 92.45' |

| LINE | BEARING | DISTANCE |
|------|---------------|----------|
| L35 | S 19'45'17" E | 120.70' |
| L36 | N 26'57'22" W | 100.00' |
| L37 | N 00'26'31" W | 495.62' |
| L38 | N 88'20'44" W | 692.50' |
| L39 | N 52'52'01" W | 173.23' |
| L40 | N 37'07'59" E | 123.46' |
| L41 | N 88'46'12" W | 518.33' |
| L42 | S 35'37'51" W | 214.87' |
| L43 | S 54'21'53" E | 807.97' |
| L44 | N 89'59'37" E | 58.44' |
| L45 | N 88'56'50" W | 322.37' |
| L46 | S 17'53'56" W | 49.67' |
| L47 | S 52'34'25" E | 25.66' |
| L48 | N 13'26'00" E | 25.35' |
| L49 | S 84'57'36" W | 58.87' |
| L50 | S 00'26'31" E | 687.45' |
| L51 | N 88'13'02" W | 691.39' |
| L52 | N 00'20'41" W | 688.94' |
| L53 | S 88'05'23" E | 690.28' |

| CURVE | RADIUS | DELTA ANGLE | CHORD LENGTH | CHORD BEARING | ARC LENGTH |
|-------|----------|-------------|--------------|---------------|------------|
| C1 | 350.00' | 66.22'03" | 383.13' | S 12'43'35" E | 405.42' |
| C2 | 150.00' | 110.27'50" | 246.44' | S 34'46'28" E | 289.19' |
| C3 | 20.00' | 52.30'17" | 17.69' | N 63'44'28" E | 18.33' |
| C4 | 95.00' | 15.00'34" | 24.82' | N 44'59'37" E | 24.89' |
| C5 | 20.00' | 52.30'17" | 17.69' | N 26'14'45" E | 18.33' |
| C6 | 20.00' | 52.30'17" | 17.69' | S 26'15'32" E | 18.33' |
| C7 | 95.00' | 15.00'34" | 24.82' | S 45'00'23" E | 24.89' |
| C8 | 20.00' | 52.30'11" | 17.69' | S 63'45'11" E | 18.33' |
| C9 | 320.00' | 29.39'13" | 163.77' | S 14'49'13" W | 165.62' |
| C10 | 1190.00' | 18.36'36" | 384.82' | S 38'57'08" W | 386.52' |
| C11 | 45.00' | 59.39'38" | 44.77' | S 44'45'59" E | 46.86' |
| C12 | 62.58' | 18.38'25" | 20.27' | S 24'15'23" E | 20.36' |

SEC-TWN-RGE: 13-S1S-28E
 DRAWN BY: JAH
 DATE: 3-10-14
 CHECKED BY: MM
 DRAWING NO. B-0902



950 Encore Way
 Naples, FL 34110
 Phone: (239) 254-2000
 Florida Certificate of
 Authorization No. 1772

* NOT A SURVEY *
 SKETCH TO ACCOMPANY LEGAL DESCRIPTION

PROJECT NO. 2002.036
 REFERENCE NO. SHEET 7 OF 8

H:\6200\5-Survey\Projects by Name of Location\TODDLERS\2002036\LEGALS\002 OVERALL 3-10-14.dwg Tab: SHEET 8 Mar 11, 2014 - 2:56pm Plotted by: John Milton

| CURVE | RADIUS | DELTA ANGLE | CHORD LENGTH | CHORD BEARING | ARC LENGTH |
|-------|---------|-------------|--------------|---------------|------------|
| C13 | 45.00' | 61.46.37" | 46.20' | S 02.41.17" E | 48.52' |
| C14 | 300.00' | 26.33.16" | 137.80' | S 14.55.24" W | 139.04' |
| C15 | 300.00' | 74.19.47" | 362.47' | S 38.48.40" W | 389.19' |
| C16 | 300.00' | 85.58.55" | 409.13' | S 32.59.06" W | 450.20' |
| C17 | 45.00' | 111.49.56" | 74.54' | S 45.54.37" W | 87.83' |
| C18 | 45.00' | 116.41.28" | 76.61' | N 19.49.41" W | 91.65' |
| C19 | 365.00' | 75.57.07" | 449.19' | S 78.42.20" W | 483.85' |
| C20 | 45.00' | 107.40.34" | 72.66' | S 16.58.44" W | 84.57' |
| C21 | 260.00' | 74.43.05" | 315.54' | S 33.46.55" W | 339.06' |
| C22 | 225.00' | 94.37.47" | 330.79' | S 43.44.16" W | 371.61' |
| C23 | 285.00' | 18.35.10" | 92.05' | N 79.39.15" W | 92.45' |
| C24 | 80.00' | 34.37.19" | 47.61' | S 73.44.42" W | 48.34' |
| C25 | 141.52' | 50.15.07" | 120.18' | S 01.58.11" E | 124.12' |
| C26 | 221.41' | 10.10.21" | 39.26' | S 21.57.07" E | 39.31' |
| C27 | 150.00' | 119.47.34" | 259.54' | S 35.56.21" W | 313.62' |
| C28 | 220.00' | 16.47.51" | 64.27' | N 40.46.06" W | 64.50' |
| C29 | 30.00' | 45.48.11" | 23.35' | N 09.28.05" W | 23.98' |
| C30 | 95.00' | 13.41.52" | 175.02' | N 53.39.55" W | 222.51' |
| C31 | 155.00' | 70.01.59" | 177.88' | N 85.44.52" W | 189.46' |
| C32 | 260.00' | 36.36.21" | 163.30' | N 69.02.03" W | 166.11' |
| C33 | 30.00' | 80.17.08" | 38.68' | N 4.71.40" W | 42.04' |
| C34 | 60.00' | 62.31.37" | 62.28' | N 38.18.54" W | 65.48' |
| C35 | 100.00' | 116.44.05" | 170.29' | S 52.03.15" W | 203.74' |
| C36 | 70.00' | 47.56.15" | 56.87' | N 42.11.08" E | 58.57' |
| C37 | 170.00' | 46.13.15" | 133.45' | N 04.53.37" W | 137.14' |
| C38 | 250.00' | 60.36.36" | 252.30' | N 58.18.32" W | 264.46' |
| C39 | 60.00' | 103.58.48" | 94.55' | S 39.23.46" W | 108.89' |
| C40 | 200.00' | 35.43.08" | 122.67' | S 00.52.24" E | 113.09' |
| C41 | 135.00' | 47.59.49" | 109.81' | S 00.52.24" E | 113.09' |
| C42 | 200.00' | 7.71.31" | 249.53' | N 35.35.46" W | 269.45' |
| C43 | 35.00' | 91.37.44" | 50.20' | N 42.48.52" W | 55.97' |
| C44 | 45.00' | 109.47.15" | 73.63' | S 30.03.58" W | 86.23' |
| C45 | 20.00' | 37.39.13" | 12.91' | S 00.55.41" E | 13.14' |
| C46 | 80.00' | 70.28.21" | 92.31' | S 17.20.15" E | 98.40' |
| C47 | 709.89' | 15.23.22" | 190.10' | S 70.44.19" W | 190.68' |
| C48 | 350.00' | 37.05.11" | 222.61' | N 17.05.16" E | 226.55' |

* NOT A SURVEY *

SEC - TNN-RGE:
 13-SIS-26E
 DRAWN BY: JHM
 CHECKED BY: TMM
 DATE: 3-10-14
 DRAWING NO: 8-6902



950 Encore Way
 Naples, FL 34110
 Phone: (239) 254-2000
 Florida Certificate of
 Authorization No. 1772

SKETCH TO ACCOMPANY LEGAL DESCRIPTION

PROJECT NO. 2002.036
 REFERENCE NO. SHEET 8 OF 8

LEGAL DESCRIPTION:

A PARCEL OF LAND LOCATED IN SECTIONS 11, 13 AND 14, TOWNSHIP 51 SOUTH, RANGE 26 EAST, AND SECTION 18, TOWNSHIP 51 SOUTH, RANGE 27 EAST, COLLIER COUNTY, FLORIDA AND BEING MORE PARTICULARLY DESCRIBED AS FOLLOWS:

BEGIN AT THE NORTHWEST CORNER OF SECTION 13, TOWNSHIP 51 SOUTH, RANGE 26 EAST, COLLIER COUNTY, FLORIDA; THENCE ALONG THE NORTH LINE OF SAID SECTION 13, RUN S89°55'46"E FOR A DISTANCE OF 4688.27 FEET, TO A POINT ON THE SOUTHERLY RIGHT-OF-WAY LINE OF U.S. 41 (TAMIAMI TRAIL), A 200' WIDE RIGHT-OF-WAY; THENCE ALONG SAID SOUTHERLY RIGHT-OF-WAY LINE, RUN S54°21'29"E FOR A DISTANCE OF 3793.58 FEET; THENCE LEAVING SAID SOUTHERLY RIGHT-OF-WAY LINE, RUN S35°39'17"W FOR A DISTANCE OF 107.40 FEET, TO A POINT OF NON-TANGENTIAL CIRCULAR CURVATURE; THENCE ALONG A CURVE TO THE RIGHT, HAVING A RADIUS OF 350.00 FEET, THROUGH A CENTRAL ANGLE OF 66°22'03", AND BEING SUBTENDED BY A CHORD OF 383.13 FEET, AT A BEARING OF S12°43'35"E, FOR AN ARC LENGTH OF 405.42 FEET, TO A POINT OF TANGENTIAL REVERSE CURVATURE; THENCE ALONG A CURVE TO THE LEFT, HAVING A RADIUS OF 150.00 FEET, THROUGH A CENTRAL ANGLE OF 110°27'50", AND BEING SUBTENDED BY A CHORD OF 246.44 FEET, AT A BEARING OF S34°46'28"E, FOR AN ARC LENGTH OF 289.19 FEET; THENCE RUN N89°59'37"E FOR A DISTANCE OF 58.44 FEET, TO A POINT OF TANGENTIAL CIRCULAR CURVATURE; THENCE ALONG A CURVE TO THE LEFT, HAVING A RADIUS OF 20.00 FEET, THROUGH A CENTRAL ANGLE OF 52°30'17", AND BEING SUBTENDED BY A CHORD OF 17.69 FEET, AT A BEARING OF N63°44'28"E, FOR AN ARC LENGTH OF 18.33 FEET, TO A POINT OF TANGENTIAL REVERSE CURVATURE; THENCE ALONG A CURVE TO THE RIGHT, HAVING A RADIUS OF 95.00 FEET, THROUGH A CENTRAL ANGLE OF 15°00'34", AND BEING SUBTENDED BY A CHORD OF 24.82 FEET, AT A BEARING OF N44°59'37"E, FOR AN ARC LENGTH OF 24.89 FEET, TO A POINT OF TANGENTIAL REVERSE CURVATURE; THENCE ALONG A CURVE TO THE LEFT, HAVING A RADIUS OF 20.00 FEET, THROUGH A CENTRAL ANGLE OF 52°30'17", AND BEING SUBTENDED BY A CHORD OF 17.69 FEET, AT A BEARING OF N26°14'45"E, FOR AN ARC LENGTH OF 18.33 FEET; THENCE RUN N89°59'37"E FOR A DISTANCE OF 100.00 FEET, TO A POINT OF NON-TANGENTIAL CIRCULAR CURVATURE; THENCE ALONG A CURVE TO THE LEFT, HAVING A RADIUS OF 20.00 FEET, THROUGH A CENTRAL ANGLE OF 52°30'17", AND BEING SUBTENDED BY A CHORD OF 17.69 FEET, AT A BEARING OF S26°15'32"E, FOR AN ARC LENGTH OF 18.33 FEET, TO A POINT OF TANGENTIAL REVERSE CURVATURE; THENCE ALONG A CURVE TO THE RIGHT, HAVING A RADIUS OF 95.00 FEET, THROUGH A CENTRAL ANGLE OF 15°00'34", AND BEING SUBTENDED BY A CHORD OF 24.82 FEET, AT A BEARING OF S45°00'23"E, FOR AN ARC LENGTH OF 24.89 FEET, TO A POINT OF TANGENTIAL REVERSE CURVATURE; THENCE ALONG A CURVE TO THE LEFT, HAVING A RADIUS OF 20.00 FEET, THROUGH A CENTRAL ANGLE OF 52°30'11", AND BEING SUBTENDED BY A CHORD OF 17.69 FEET, AT A BEARING OF S63°45'11"E, FOR AN ARC LENGTH OF 18.33 FEET; THENCE RUN S00°00'23"E FOR A DISTANCE OF 130.00 FEET; THENCE RUN N89°59'37"E FOR A DISTANCE OF 113.79 FEET; THENCE RUN S00°00'23"E FOR A DISTANCE OF 150.36 FEET, TO A POINT OF TANGENTIAL CIRCULAR CURVATURE; THENCE ALONG A CURVE TO THE RIGHT, HAVING A RADIUS OF 320.00 FEET, THROUGH A CENTRAL ANGLE OF 29°39'13", AND BEING SUBTENDED BY A CHORD OF 163.77 FEET, AT A BEARING OF S14°49'13"W, FOR AN ARC LENGTH OF 165.62 FEET, TO A POINT OF TANGENTIAL COMPOUND CURVATURE; THENCE ALONG A CURVE TO THE RIGHT, HAVING A RADIUS OF 1190.00 FEET, THROUGH A CENTRAL ANGLE OF 18°36'36", AND BEING SUBTENDED BY A CHORD OF 384.82 FEET, AT A BEARING OF S38°57'08"W, FOR AN ARC LENGTH OF 386.52 FEET, TO A POINT OF NON-TANGENTIAL COMPOUND CURVATURE; THENCE ALONG A CURVE TO THE RIGHT, HAVING A RADIUS OF 45.00 FEET, THROUGH A CENTRAL ANGLE OF 59°39'38", AND BEING SUBTENDED BY A CHORD OF 44.77 FEET, AT A BEARING OF S44°45'59"E, FOR AN ARC LENGTH OF 46.86 FEET, TO A POINT OF REVERSE CURVATURE; THENCE ALONG A CURVE TO THE LEFT, HAVING A RADIUS OF 62.58 FEET, THROUGH A CENTRAL ANGLE OF 18°38'25", AND BEING SUBTENDED BY A CHORD OF 20.27 FEET, AT A BEARING OF S24°15'23"E, FOR AN ARC LENGTH OF 20.36 FEET, TO A POINT OF REVERSE CURVATURE; THENCE ALONG A CURVE TO THE RIGHT, HAVING A RADIUS OF 45.00 FEET, THROUGH A CENTRAL ANGLE OF 61°46'37", AND BEING SUBTENDED BY A CHORD OF 46.20 FEET, AT A BEARING OF S02°41'17"E, FOR AN ARC LENGTH OF 48.52 FEET; THENCE RUN S28°12'02"W FOR A DISTANCE OF 70.46 FEET, TO A POINT OF TANGENTIAL CIRCULAR CURVATURE; THENCE ALONG A CURVE TO THE LEFT, HAVING A RADIUS OF 300.00 FEET, THROUGH A CENTRAL ANGLE OF 26°33'16", AND BEING SUBTENDED BY A CHORD OF 137.80 FEET, AT A BEARING OF S14°55'24"W, FOR AN ARC LENGTH OF 139.04 FEET, TO A POINT OF TANGENTIAL REVERSE CURVATURE; THENCE ALONG A CURVE TO THE RIGHT, HAVING A RADIUS OF 300.00 FEET, THROUGH A CENTRAL ANGLE OF 74°19'47", AND BEING SUBTENDED BY A CHORD OF 362.47 FEET, AT A BEARING OF S38°48'40"W, FOR AN ARC LENGTH OF 389.19 FEET, TO A POINT OF TANGENTIAL REVERSE CURVATURE; THENCE ALONG A CURVE TO THE LEFT, HAVING A RADIUS OF 300.00 FEET, THROUGH A CENTRAL ANGLE OF 85°58'55", AND BEING SUBTENDED BY A CHORD OF 409.13 FEET, AT A BEARING OF S32°59'06"W, FOR AN ARC LENGTH OF 450.20 FEET, TO A POINT OF TANGENTIAL REVERSE CURVATURE; THENCE ALONG A CURVE TO THE RIGHT, HAVING A RADIUS OF 45.00 FEET, THROUGH A CENTRAL ANGLE OF 111°49'56", AND BEING SUBTENDED BY A CHORD OF 74.54 FEET, AT A BEARING OF S45°54'37"W, FOR AN ARC LENGTH OF 87.83 FEET; THENCE RUN N78°10'25"W FOR A DISTANCE OF 194.68 FEET, TO A POINT OF TANGENTIAL CIRCULAR CURVATURE; THENCE ALONG A CURVE TO THE RIGHT, HAVING A RADIUS OF 45.00 FEET, THROUGH A CENTRAL ANGLE OF 116°41'28", AND BEING SUBTENDED BY A CHORD OF 76.61 FEET, AT A BEARING OF N19°49'41"W, FOR AN ARC LENGTH OF 91.65 FEET; THENCE RUN N38°31'03"E FOR A DISTANCE OF 111.08 FEET; THENCE RUN N51°28'57"W FOR A DISTANCE OF 105.27 FEET, TO A POINT OF NON-TANGENTIAL CIRCULAR CURVATURE; THENCE ALONG A CURVE TO THE RIGHT, HAVING A RADIUS OF 365.00 FEET, THROUGH A CENTRAL ANGLE OF 75°57'07", AND BEING SUBTENDED BY A CHORD OF 449.19 FEET, AT A BEARING OF S78°42'20"W, FOR AN ARC LENGTH OF 483.85 FEET, TO A POINT OF NON-TANGENTIAL COMPOUND CURVATURE; THENCE ALONG A CURVE TO THE RIGHT, HAVING A RADIUS OF 45.00 FEET, THROUGH A CENTRAL ANGLE OF 107°40'34", AND BEING SUBTENDED BY A CHORD OF 72.66 FEET, AT A BEARING OF S16°58'44"W, FOR AN ARC LENGTH OF 84.57 FEET, TO A POINT OF ON-TANGENTIAL COMPOUND CURVATURE; THENCE ALONG A CURVE TO THE LEFT, HAVING A RADIUS OF 260.00 FEET, THROUGH A CENTRAL ANGLE OF 74°43'05", AND BEING SUBTENDED BY A CHORD OF 315.54 FEET, AT A BEARING OF S33°46'55"W, FOR AN ARC LENGTH OF 339.06 FEET; THENCE RUN S03°34'37"E FOR A DISTANCE OF 87.88 FEET, TO A POINT OF TANGENTIAL CIRCULAR CURVATURE; THENCE ALONG A CURVE TO THE RIGHT, HAVING A RADIUS OF 225.00 FEET, THROUGH A CENTRAL ANGLE OF 94°37'47", AND BEING SUBTENDED BY A CHORD OF 330.79 FEET, AT A BEARING OF S43°44'16"W, FOR AN ARC LENGTH OF 371.61 FEET; THENCE RUN N88°56'50"W FOR A DISTANCE OF 322.37 FEET, TO A POINT OF TANGENTIAL CIRCULAR CURVATURE; THENCE ALONG A CURVE TO THE RIGHT, HAVING A RADIUS OF 285.00 FEET, THROUGH A CENTRAL ANGLE OF 18°35'10", AND BEING SUBTENDED BY A CHORD OF 92.05 FEET, AT A BEARING OF N79°39'15"W, FOR AN ARC LENGTH OF 92.45 FEET; THENCE RUN N88°56'39"W FOR A DISTANCE OF 664.33 FEET, TO A POINT OF TANGENTIAL CIRCULAR CURVATURE; THENCE ALONG A CURVE TO THE LEFT, HAVING A RADIUS OF 80.00 FEET, THROUGH A CENTRAL ANGLE OF 42°52'13", AND BEING SUBTENDED BY A CHORD OF 58.47 FEET, AT A BEARING OF S69°37'15"W, FOR AN ARC LENGTH OF 59.86 FEET, TO A POINT OF COMPOUND CURVATURE; THENCE ALONG A CURVE TO THE LEFT, HAVING A RADIUS OF 81.20 FEET, THROUGH A CENTRAL ANGLE OF 94°11'25", AND BEING SUBTENDED BY A CHORD OF 118.96 FEET, AT A BEARING OF N84°43'04"W, FOR AN ARC LENGTH OF 133.49 FEET;

| | |
|---|-----------------|
| DRAWN BY: R.A.K. | DATE: 9/7/16 |
| SHEET 1 | OF SHEET 5 |
| SEC-TWN-RGE: 11,13,14-51S-26E & 18-51S-27E | |



950 Encore Way
Naples, FL 34110
Phone: (239) 254-2000
Florida Certificate of
Authorization No.1772

EXHIBIT 4
LEGAL DESCRIPTION
COMMUNITY DEVELOPMENT DISTRICT 2

| |
|---------------------------------|
| DRAWING NO. B-7366-2 |
| PROJECT NO. 1998070 |
| FILE NAME CDD2 SKD_Rev02.dwg |

EXHIBIT **B**

(CONTINUED FROM SHEET 1 OF 5)

THENCE RUN S04°47'07"W FOR A DISTANCE OF 126.86 FEET; THENCE RUN N77°46'12"W FOR A DISTANCE OF 78.84 FEET; THENCE RUN N88°51'53"W FOR A DISTANCE OF 65.94 FEET; THENCE RUN N84°45'39"W FOR A DISTANCE OF 685.72 FEET; THENCE RUN S05°42'49"W FOR A DISTANCE OF 66.04 FEET; THENCE RUN N84°17'11"W FOR A DISTANCE OF 48.52 FEET; THENCE RUN S28°00'46"W FOR A DISTANCE OF 219.00 FEET; THENCE RUN N61°59'14"W FOR A DISTANCE OF 667.71 FEET, TO A POINT OF TANGENTIAL CIRCULAR CURVATURE; THENCE ALONG A CURVE TO THE LEFT, HAVING A RADIUS OF 200.00 FEET, THROUGH A CENTRAL ANGLE OF 23°47'41", AND BEING SUBTENDED BY A CHORD OF 82.46 FEET, AT A BEARING OF N73°53'04"W, FOR AN ARC LENGTH OF 83.06 FEET, TO A POINT OF TANGENTIAL REVERSE CURVATURE; THENCE ALONG A CURVE TO THE RIGHT, HAVING A RADIUS OF 300.00 FEET, THROUGH A CENTRAL ANGLE OF 16°27'34", AND BEING SUBTENDED BY A CHORD OF 85.89 FEET, AT A BEARING OF N77°33'08"W, FOR AN ARC LENGTH OF 86.18 FEET, TO A POINT OF TANGENTIAL COMPOUND CURVATURE; THENCE ALONG A CURVE TO THE RIGHT, HAVING A RADIUS OF 150.00 FEET, THROUGH A CENTRAL ANGLE OF 61°29'33", AND BEING SUBTENDED BY A CHORD OF 153.37 FEET, AT A BEARING OF N38°34'34"W, FOR AN ARC LENGTH OF 160.99 FEET, TO A POINT OF TANGENTIAL REVERSE CURVATURE; THENCE ALONG A CURVE TO THE LEFT, HAVING A RADIUS OF 137.00 FEET, THROUGH A CENTRAL ANGLE OF 112°55'12", AND BEING SUBTENDED BY A CHORD OF 228.38 FEET, AT A BEARING OF N64°17'24"W, FOR AN ARC LENGTH OF 270.00 FEET; THENCE RUN S59°15'00"W FOR A DISTANCE OF 59.92 FEET, TO A POINT OF TANGENTIAL CIRCULAR CURVATURE; THENCE ALONG A CURVE TO THE RIGHT, HAVING A RADIUS OF 135.00 FEET, THROUGH A CENTRAL ANGLE OF 71°28'36", AND BEING SUBTENDED BY A CHORD OF 157.70 FEET, AT A BEARING OF N85°00'42"W, FOR AN ARC LENGTH OF 168.41 FEET, TO A POINT OF TANGENTIAL REVERSE CURVATURE; THENCE ALONG A CURVE TO THE LEFT, HAVING A RADIUS OF 250.00 FEET, THROUGH A CENTRAL ANGLE OF 38°03'09", AND BEING SUBTENDED BY A CHORD OF 163.00 FEET, AT A BEARING OF N68°17'59"W, FOR AN ARC LENGTH OF 166.04 FEET; THENCE RUN N87°19'33"W FOR A DISTANCE OF 86.72 FEET, TO A POINT OF TANGENTIAL CIRCULAR CURVATURE; THENCE ALONG A CURVE TO THE RIGHT, HAVING A RADIUS OF 10.00 FEET, THROUGH A CENTRAL ANGLE OF 80°16'50", AND BEING SUBTENDED BY A CHORD OF 12.89 FEET, AT A BEARING OF N47°11'08"W, FOR AN ARC LENGTH OF 14.01 FEET; THENCE RUN N07°02'43"W FOR A DISTANCE OF 40.73 FEET, TO A POINT OF TANGENTIAL CIRCULAR CURVATURE; THENCE ALONG A CURVE TO THE LEFT, HAVING A RADIUS OF 100.00 FEET, THROUGH A CENTRAL ANGLE OF 54°47'04", AND BEING SUBTENDED BY A CHORD OF 92.02 FEET, AT A BEARING OF N34°26'15"W, FOR AN ARC LENGTH OF 95.62 FEET, TO A POINT OF TANGENTIAL COMPOUND CURVATURE; THENCE ALONG A CURVE TO THE LEFT, HAVING A RADIUS OF 550.00 FEET, THROUGH A CENTRAL ANGLE OF 13°06'41", AND BEING SUBTENDED BY A CHORD OF 125.58 FEET, AT A BEARING OF N68°23'07"W, FOR AN ARC LENGTH OF 125.86 FEET, TO A POINT OF TANGENTIAL REVERSE CURVATURE; THENCE ALONG A CURVE TO THE RIGHT, HAVING A RADIUS OF 500.00 FEET, THROUGH A CENTRAL ANGLE OF 46°56'36", AND BEING SUBTENDED BY A CHORD OF 398.30 FEET, AT A BEARING OF N51°28'09"W, FOR AN ARC LENGTH OF 409.66 FEET; THENCE RUN N27°59'51"W FOR A DISTANCE OF 47.49 FEET, TO A POINT OF TANGENTIAL CIRCULAR CURVATURE; THENCE ALONG A CURVE TO THE LEFT, HAVING A RADIUS OF 260.00 FEET, THROUGH A CENTRAL ANGLE OF 60°36'37", AND BEING SUBTENDED BY A CHORD OF 262.39 FEET, AT A BEARING OF N58°18'09"W, FOR AN ARC LENGTH OF 275.04 FEET; THENCE RUN N88°36'28"W FOR A DISTANCE OF 125.93 FEET, TO A POINT OF TANGENTIAL CIRCULAR CURVATURE; THENCE ALONG A CURVE TO THE LEFT, HAVING A RADIUS OF 100.00 FEET, THROUGH A CENTRAL ANGLE OF 69°20'20", AND BEING SUBTENDED BY A CHORD OF 113.77 FEET, AT A BEARING OF S56°43'22"W, FOR AN ARC LENGTH OF 121.02 FEET, TO A POINT OF TANGENTIAL REVERSE CURVATURE; THENCE ALONG A CURVE TO THE RIGHT, HAVING A RADIUS OF 200.00 FEET, THROUGH A CENTRAL ANGLE OF 48°41'47", AND BEING SUBTENDED BY A CHORD OF 164.91 FEET, AT A BEARING OF S46°24'06"W, FOR AN ARC LENGTH OF 169.98 FEET, TO A POINT OF TANGENTIAL COMPOUND CURVATURE; THENCE ALONG A CURVE TO THE RIGHT, HAVING A RADIUS OF 700.00 FEET, THROUGH A CENTRAL ANGLE OF 13°28'58", AND BEING SUBTENDED BY A CHORD OF 164.34 FEET, AT A BEARING OF S77°29'29"W, FOR AN ARC LENGTH OF 164.72 FEET; THENCE RUN S84°13'58"W FOR A DISTANCE OF 169.90 FEET, TO A POINT OF TANGENTIAL CIRCULAR CURVATURE; THENCE ALONG A CURVE TO THE LEFT, HAVING A RADIUS OF 250.00 FEET, THROUGH A CENTRAL ANGLE OF 34°43'19", AND BEING SUBTENDED BY A CHORD OF 149.20 FEET, AT A BEARING OF S66°52'18"W, FOR AN ARC LENGTH OF 151.50 FEET, TO A POINT OF TANGENTIAL REVERSE CURVATURE; THENCE ALONG A CURVE TO THE RIGHT, HAVING A RADIUS OF 475.00 FEET, THROUGH A CENTRAL ANGLE OF 62°08'00", AND BEING SUBTENDED BY A CHORD OF 490.23 FEET, AT A BEARING OF S80°34'39"W, FOR AN ARC LENGTH OF 515.11 FEET, TO A POINT OF TANGENTIAL REVERSE CURVATURE; THENCE ALONG A CURVE TO THE LEFT, HAVING A RADIUS OF 200.00 FEET, THROUGH A CENTRAL ANGLE OF 65°24'33", AND BEING SUBTENDED BY A CHORD OF 216.12 FEET, AT A BEARING OF S78°56'22"W, FOR AN ARC LENGTH OF 228.32 FEET, TO A POINT OF TANGENTIAL REVERSE CURVATURE; THENCE ALONG A CURVE TO THE RIGHT, HAVING A RADIUS OF 150.00 FEET, THROUGH A CENTRAL ANGLE OF 43°19'39", AND BEING SUBTENDED BY A CHORD OF 110.75 FEET, AT A BEARING OF S67°53'55"W, FOR AN ARC LENGTH OF 113.43 FEET; THENCE RUN S89°33'44"W FOR A DISTANCE OF 33.81 FEET; THENCE RUN N00°25'58"W FOR A DISTANCE OF 2674.12 FEET; THENCE RUN N26°57'22"W FOR A DISTANCE OF 100.00 FEET, TO A POINT OF NON-TANGENTIAL CIRCULAR CURVATURE; THENCE ALONG A CURVE TO THE RIGHT, HAVING A RADIUS OF 709.89 FEET, THROUGH A CENTRAL ANGLE OF 15°24'01", AND BEING SUBTENDED BY A CHORD OF 190.23 FEET, AT A BEARING OF S70°44'39"W, FOR AN ARC LENGTH OF 190.81 FEET, TO A POINT ON THE EAST LINE OF THE NORTHEAST QUARTER OF SECTION 14, TOWNSHIP 51 SOUTH, RANGE 26 EAST; THENCE ALONG SAID EAST LINE OF THE NORTHEAST QUARTER OF SECTION 14, RUN N00°25'37"W FOR A DISTANCE OF 495.65 FEET, TO THE SOUTHEAST CORNER OF THE NORTHEAST QUARTER OF THE NORTHEAST QUARTER OF SAID SECTION 14; THENCE ALONG THE SOUTH LINE OF THE NORTHEAST QUARTER OF THE NORTHEAST QUARTER OF SAID SECTION 14, RUN N88°20'43"W FOR A DISTANCE OF 693.91 FEET, TO THE SOUTHWEST CORNER OF THE EAST HALF OF THE NORTHEAST QUARTER OF THE NORTHEAST QUARTER OF SAID SECTION 14; THENCE LEAVING SAID SECTION LINE, RUN N52°51'27"W FOR A DISTANCE OF 171.83 FEET; THENCE RUN S37°08'33"W FOR A DISTANCE OF 122.51 FEET, TO A POINT ON THE SOUTH LINE OF THE NORTH QUARTER OF SAID SECTION 14; THENCE ALONG SAID SOUTH LINE OF THE NORTH QUARTER OF SAID SECTION 14, RUN N88°20'43"W FOR A DISTANCE OF 2557.48 FEET; THENCE ALONG THE WEST LINE OF THE EAST HALF OF THE NORTHEAST QUARTER OF THE NORTHWEST QUARTER OF SAID SECTION 14, RUN N00°02'07"E FOR A DISTANCE OF 1389.87 FEET; THENCE LEAVING SAID QUARTER LINE, RUN N88°05'43"W FOR A DISTANCE OF 590.35 FEET; THENCE RUN N01°43'02"E FOR A DISTANCE OF 1493.79 FEET; THENCE RUN S88°09'55"E FOR A DISTANCE OF 1274.00 FEET; THENCE RUN S88°09'46"E FOR A DISTANCE OF 1374.52 FEET; THENCE ALONG THE WEST LINE OF THE EAST HALF OF THE SOUTHEAST QUARTER OF SECTION 11 AND THE WEST LINE OF THE SOUTHEAST QUARTER OF THE NORTHEAST QUARTER OF SAID SECTION 11, TOWNSHIP 51 SOUTH, RANGE 26 EAST, RUN N01°13'54"E FOR A DISTANCE OF 1860.10 FEET; THENCE LEAVING SAID QUARTER LINE, RUN S88°46'12"E FOR A DISTANCE OF 518.33 FEET, TO A POINT OF NON-TANGENTIAL CIRCULAR CURVATURE; THENCE ALONG A CURVE TO THE RIGHT, HAVING A RADIUS OF 350.00 FEET, THROUGH A CENTRAL ANGLE OF 37°05'11", AND BEING SUBTENDED BY A CHORD OF 222.61 FEET, AT A BEARING OF N17°05'16"E, FOR AN ARC LENGTH OF 226.55 FEET; THENCE RUN N35°37'51"E FOR A DISTANCE OF 214.87 FEET, TO A POINT ON SAID SOUTHERLY RIGHT-OF-WAY LINE OF U.S. 41;

| | |
|---|-----------------|
| DRAWN BY: R.A.K. | DATE: 9/7/18 |
| SHEET # 2 | OF SHEET 5 |
| SEC-TWN-RGE: 11,13,14-51S-26E & 18-51S-27E | |



950 Encore Way
Naples, FL 34110
Phone: (239) 254-2000
Florida Certificate of
Authorization No.1772

LEGAL DESCRIPTION

COMMUNITY DEVELOPMENT DISTRICT 2

| |
|---------------------------------|
| DRAWING NO. B-7366-2 |
| PROJECT NO. 1998070 |
| FILE NAME CDD2 SKD_Rev02.dwg |

EXHIBIT B

Page 2 of 5

(CONTINUED FROM SHEET 2 OF 5)

THENCE ALONG SAID SOUTHERLY RIGHT-OF-WAY LINE, RUN S54°21'53"E FOR A DISTANCE OF 807.97 FEET, TO AN INTERSECTION WITH THE EAST LINE OF THE NORTHEAST QUARTER OF SAID SECTION 11; THENCE ALONG SAID QUARTER LINE, RUN S01°00'06"W FOR A DISTANCE OF 3308.61 FEET, TO THE POINT OF BEGINNING OF THE PARCEL HEREIN DESCRIBED; CONTAINING 1,070.640 ACRES.

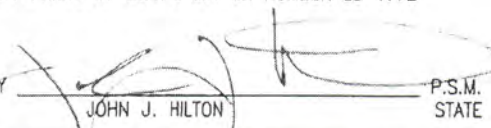
LESS AND EXCEPT:

A PARCEL OF LAND LOCATED IN A PORTION OF SECTION 14, TOWNSHIP 51 SOUTH, RANGE 26 EAST, COLLIER COUNTY, FLORIDA, BEING MORE PARTICULARLY DESCRIBED AS FOLLOWS:

THE NORTHEAST 1/4 OF THE NORTHEAST 1/4 OF THE NORTHEAST 1/4 OF SECTION 14, TOWNSHIP 51 SOUTH, RANGE 26 EAST, COLLIER COUNTY, FLORIDA, CONTAINING 10.906 ACRES, MORE OR LESS.

TOTAL DESCRIBED AREA = 1,059.734 ACRES.

HOLE MONTES, INC.
 CERTIFICATE OF AUTHORIZATION NUMBER LB 1772

BY  P.S.M. #6278
 JOHN J. HILTON STATE OF FLORIDA

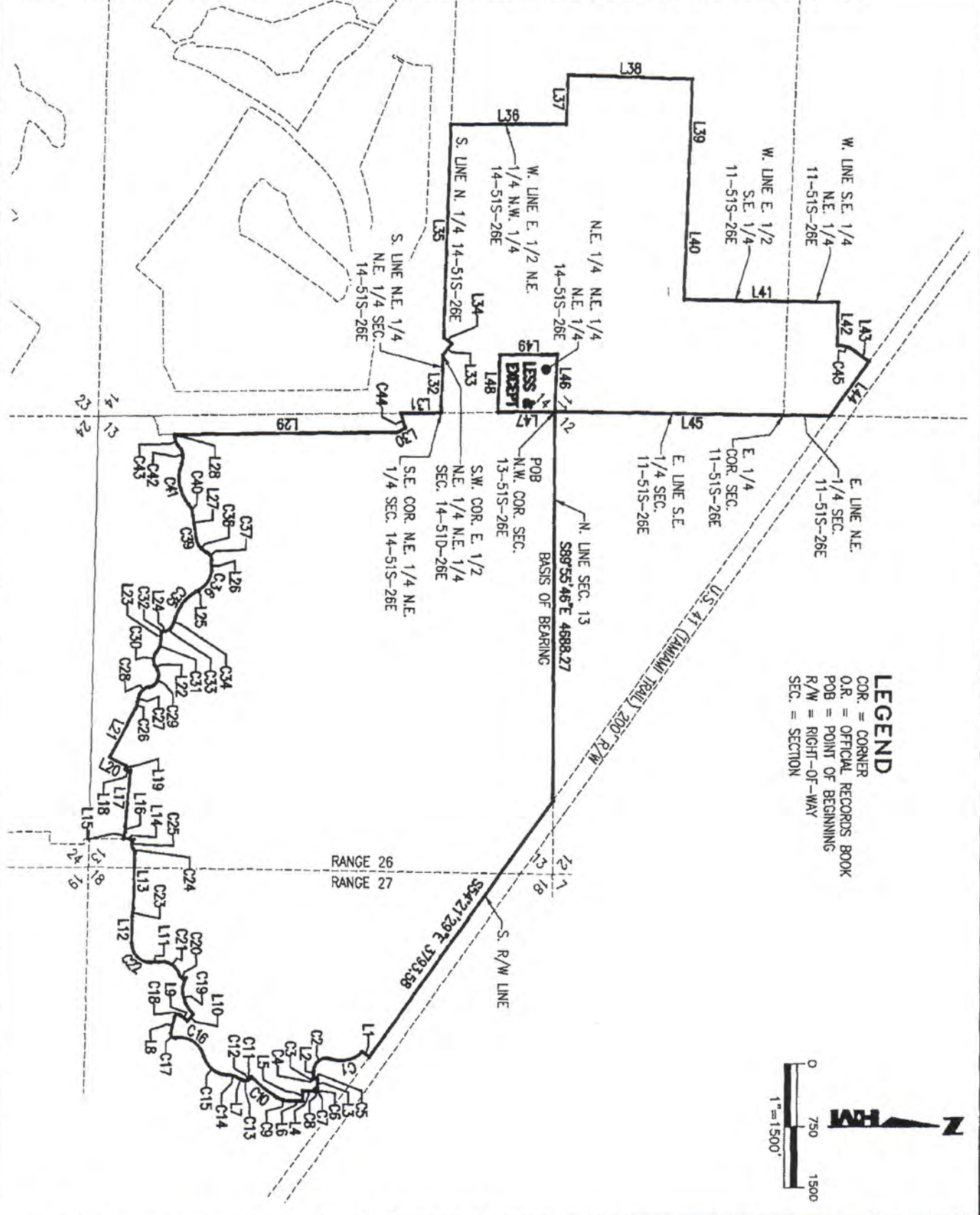
| | |
|---|-----------------|
| DRAWN BY: R.A.K. | DATE: 9/7/16 |
| SHEET 3 | OF SHEET 5 |
| SEC-TWN-RGE: 11,13,14-51S-26E & 18-51S-27E | |



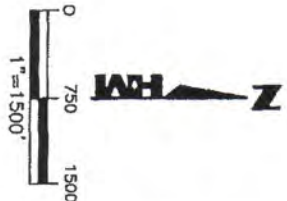
950 Encore Way
 Naples, FL. 34110
 Phone: (239) 254-2000
 Florida Certificate of
 Authorization No.1772

LEGAL DESCRIPTION
 COMMUNITY DEVELOPMENT DISTRICT 2

| |
|---------------------------------|
| DRAWING NO. B-7366-2 |
| PROJECT NO. 1998070 |
| FILE NAME CDD2 SKD_Rev02.dwg |



LEGEND
 COR. = CORNER
 O.R. = OFFICIAL RECORDS BOOK
 POB = POINT OF BEGINNING
 R/W = RIGHT-OF-WAY
 SEC. = SECTION



| | |
|---|-----------------|
| DRAWN BY: R.A.K. | DATE: 9/7/16 |
| SHEET # 4 | OF SHEET 5 |
| SEC-TWN-RGE: 11,13,14-51S-26E & 18-51S-27E | |



950 Encore Way
 Naples, FL. 34110
 Phone: (239) 254-2000
 Florida Certificate of
 Authorization No.1772

SKETCH OF LEGAL DESCRIPTION
 COMMUNITY DEVELOPMENT DISTRICT 2

| |
|---------------------------------|
| DRAWING NO. 8-7366-2 |
| PROJECT NO. 1998070 |
| FILE NAME C002 SKD_Rev02.dwg |

| CURVE TABLE | | | | | |
|-------------|---------|------------|--------|---------------|------------|
| CURVE | RADIUS | DELTA | CHORD | CHORD BEARING | ARC LENGTH |
| C1 | 350.00 | 66°22'03" | 383.13 | S12°43'35"E | 405.42 |
| C2 | 150.00 | 110°27'50" | 246.44 | S34°46'28"E | 289.19 |
| C3 | 20.00 | 52°30'17" | 17.69 | N63°44'28"E | 18.33 |
| C4 | 95.00 | 15°00'34" | 24.82 | N44°59'37"E | 24.89 |
| C5 | 20.00 | 52°30'17" | 17.69 | N26°14'45"E | 18.33 |
| C6 | 20.00 | 52°30'17" | 17.69 | S26°15'32"E | 18.33 |
| C7 | 95.00 | 15°00'34" | 24.82 | S45°00'23"E | 24.89 |
| C8 | 20.00 | 52°30'11" | 17.69 | S63°45'11"E | 18.33 |
| C9 | 320.00 | 29°39'13" | 163.77 | S14°49'13"W | 165.62 |
| C10 | 1190.00 | 18°36'36" | 384.82 | S38°57'08"W | 386.52 |
| C11 | 45.00 | 59°39'38" | 44.77 | S44°45'59"E | 46.86 |
| C12 | 62.58 | 18°38'25" | 20.27 | S24°15'23"E | 20.36 |
| C13 | 45.00 | 61°46'37" | 46.20 | S02°41'17"E | 48.52 |
| C14 | 300.00 | 26°33'16" | 137.80 | S14°55'24"W | 139.04 |
| C15 | 300.00 | 74°19'47" | 362.47 | S38°48'40"W | 389.19 |
| C16 | 300.00 | 85°58'55" | 409.13 | S32°59'06"W | 450.20 |
| C17 | 45.00 | 111°49'56" | 74.54 | S45°54'37"W | 87.83 |
| C18 | 45.00 | 116°41'28" | 76.61 | N19°49'41"W | 91.65 |
| C19 | 365.00 | 75°57'07" | 449.19 | S78°42'20"W | 483.85 |
| C20 | 45.00 | 107°40'34" | 72.66 | S16°58'44"W | 84.57 |
| C21 | 260.00 | 74°43'05" | 315.54 | S33°46'55"W | 339.06 |
| C22 | 225.00 | 94°37'47" | 330.79 | S43°44'16"W | 371.61 |
| C23 | 285.00 | 18°35'10" | 92.05 | N79°39'15"W | 92.45 |

| CURVE TABLE | | | | | |
|-------------|--------|------------|--------|---------------|------------|
| CURVE | RADIUS | DELTA | CHORD | CHORD BEARING | ARC LENGTH |
| C24 | 80.00 | 42°52'13" | 58.47 | S69°37'15"W | 59.86 |
| C25 | 81.20 | 94°11'25" | 118.96 | N84°43'04"W | 133.49 |
| C26 | 200.00 | 23°47'41" | 82.46 | N73°53'04"W | 83.06 |
| C27 | 300.00 | 16°27'34" | 85.89 | N77°33'08"W | 86.18 |
| C28 | 150.00 | 61°29'33" | 153.37 | N38°34'34"W | 160.99 |
| C29 | 137.00 | 112°55'12" | 228.38 | N64°17'24"W | 270.00 |
| C30 | 135.00 | 71°28'36" | 157.70 | N85°00'42"W | 168.41 |
| C31 | 250.00 | 38°03'09" | 163.00 | N68°17'59"W | 166.04 |
| C32 | 10.00 | 80°16'50" | 12.89 | N47°11'08"W | 14.01 |
| C33 | 100.00 | 54°47'04" | 92.02 | N34°26'15"W | 95.62 |
| C34 | 550.00 | 13°06'41" | 125.58 | N68°23'07"W | 125.86 |
| C35 | 500.00 | 46°56'36" | 398.30 | N51°28'09"W | 409.66 |
| C36 | 260.00 | 60°36'37" | 262.39 | N58°18'09"W | 275.04 |
| C37 | 100.00 | 69°20'20" | 113.77 | S56°43'22"W | 121.02 |
| C38 | 200.00 | 48°41'47" | 164.91 | S46°24'06"W | 169.98 |
| C39 | 700.00 | 13°28'58" | 164.34 | S77°29'29"W | 164.72 |
| C40 | 250.00 | 34°43'19" | 149.20 | S66°52'18"W | 151.50 |
| C41 | 475.00 | 62°08'00" | 490.23 | S80°34'39"W | 515.11 |
| C42 | 200.00 | 65°24'33" | 216.12 | S78°56'22"W | 228.32 |
| C43 | 150.00 | 43°19'39" | 110.75 | S67°53'55"W | 113.43 |
| C44 | 709.89 | 15°24'01" | 190.23 | S70°44'39"W | 190.81 |
| C45 | 350.00 | 37°05'11" | 222.61 | N17°05'16"E | 226.55 |

| LINE TABLE | | |
|------------|-------------|--------|
| LINE | DIRECTION | LENGTH |
| L1 | S35°39'17"W | 107.40 |
| L2 | N89°59'37"E | 58.44 |
| L3 | N89°59'37"E | 100.00 |
| L4 | S00°00'23"E | 130.00 |
| L5 | N89°59'37"E | 113.79 |
| L6 | S00°00'23"E | 150.36 |
| L7 | S28°12'02"W | 70.46 |
| L8 | N78°10'25"W | 194.68 |
| L9 | N38°31'03"E | 111.08 |
| L10 | N51°28'57"W | 105.27 |
| L11 | S03°34'37"E | 87.88 |
| L12 | N88°56'50"W | 322.37 |
| L13 | N88°56'39"W | 664.33 |

| LINE TABLE | | |
|------------|-------------|--------|
| LINE | DIRECTION | LENGTH |
| L14 | S04°47'07"W | 126.86 |
| L15 | N77°46'12"W | 78.84 |
| L16 | N88°51'53"W | 65.94 |
| L17 | N84°45'39"W | 685.72 |
| L18 | S05°42'49"W | 66.04 |
| L19 | N84°17'11"W | 48.52 |
| L20 | S28°00'46"W | 219.00 |
| L21 | N61°59'14"W | 667.71 |
| L22 | S59°15'00"W | 59.92 |
| L23 | N87°19'33"W | 86.72 |
| L24 | N07°02'43"W | 40.73 |
| L25 | N27°59'51"W | 47.49 |
| L26 | N88°36'28"W | 125.93 |

| LINE TABLE | | |
|------------|-------------|---------|
| LINE | DIRECTION | LENGTH |
| L27 | S84°13'58"W | 169.90 |
| L28 | S89°33'44"W | 33.81 |
| L29 | N00°25'58"W | 2874.12 |
| L30 | N26°57'22"W | 100.00 |
| L31 | N00°25'37"W | 495.65 |
| L32 | N88°20'43"W | 693.91 |
| L33 | N52°51'27"W | 171.83 |
| L34 | S37°08'33"W | 122.51 |
| L35 | N88°20'43"W | 2557.48 |
| L36 | N00°02'07"E | 1389.87 |
| L37 | N88°05'43"W | 590.35 |
| L38 | N01°43'02"E | 1493.79 |
| L39 | S88°09'55"E | 1274.00 |

| LINE TABLE | | |
|------------|-------------|---------|
| LINE | DIRECTION | LENGTH |
| L40 | S88°09'46"E | 1374.52 |
| L41 | N01°13'54"E | 1860.10 |
| L42 | S88°46'12"E | 518.33 |
| L43 | N35°37'51"E | 214.87 |
| L44 | S54°21'53"E | 807.97 |
| L45 | S01°00'06"W | 3308.61 |
| L46 | S88°05'23"E | 690.28 |
| L47 | S00°26'31"E | 687.45 |
| L48 | N88°13'02"W | 691.39 |
| L49 | N00°20'41"W | 688.94 |

DRAWN BY: R.A.K.
 DATE: 9/7/16
 SHEET # 5 OF SHEET 5
 SEC-TWN-RGE: 11,13,14-51S-26E & 18-51S-27E



950 Encore Way
 Naples, FL 34110
 Phone: (239) 254-2000
 Florida Certificate of
 Authorization No. 1772

LINE AND CURVE TABLES
 COMMUNITY DEVELOPMENT DISTRICT 2

DRAWING NO. B-7366-2
 PROJECT NO. 1998070
 FILE NAME CDD2_SKD_Rev02.dwg

EXHIBIT B

Page 5 of 5

42X-1.002 Boundary.

The boundaries of the district, as amended, are those set forth in Exhibit "4" to the Petition to Amend the Fiddler's Creek Community Development District 1 filed with the Commission on March 2, 2017, and amended on March 17, 2017, under Commission Case Number CDD-17-002. The Petition to Amend the Fiddler's Creek Community Development District 1 filed with the Commission on March 2, 2017, and amended on March 17, 2017, under Commission Case Number CDD-17-002, is hereby incorporated by reference, and available at <http://www.flrules.org/Gateway/reference.asp?No=Ref-08616>, and copies of which are available by contacting the Clerk of the Florida Land and Water Adjudicatory Commission at Office of the Governor, Room 1802, The Capitol, Tallahassee, Florida 32399-0001.

The total Fiddler's Creek Community Development District 1 area = 1342.95 acres, more or less.

Rulemaking Authority 190.005, 190.046(1) FS. Law Implemented 190.004, 190.005, 190.046(1) FS. History—New 8-13-96, Amended 9-16-03, 9-5-16, 11-13-17.

STATE OF FLORIDA DEPARTMENT OF STATE

I, KEN DETZNER, Secretary of State of the State of Florida, do hereby certify that the above and foregoing is a true and correct copy of Rule 42X-1.002, Florida Administrative Code, rules and regulations of the Land and Water Adjudicatory Commission, Fiddler's Creek Community Development District 1, filed pursuant to Chapter 120, Florida Statutes, and was in full force and effect from November 13, 2017 to date, as shown by the records of this office.

**Given under my hand and the
Great Seal of the State of Florida
at Tallahassee, the Capitol, this the
28th day of November, A.D., 2017.**



Ken Detzner

Secretary of State

DSDE 99 (3/03)

The original document has a reflective line mark in paper. Hold at an angle to view when checking.

If photocopied or chemically altered, the word "VOID" will appear.

"State of Florida" appears in small letters across the face of this 8 1/2 x 11" document.