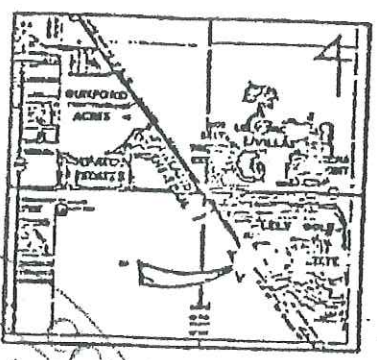
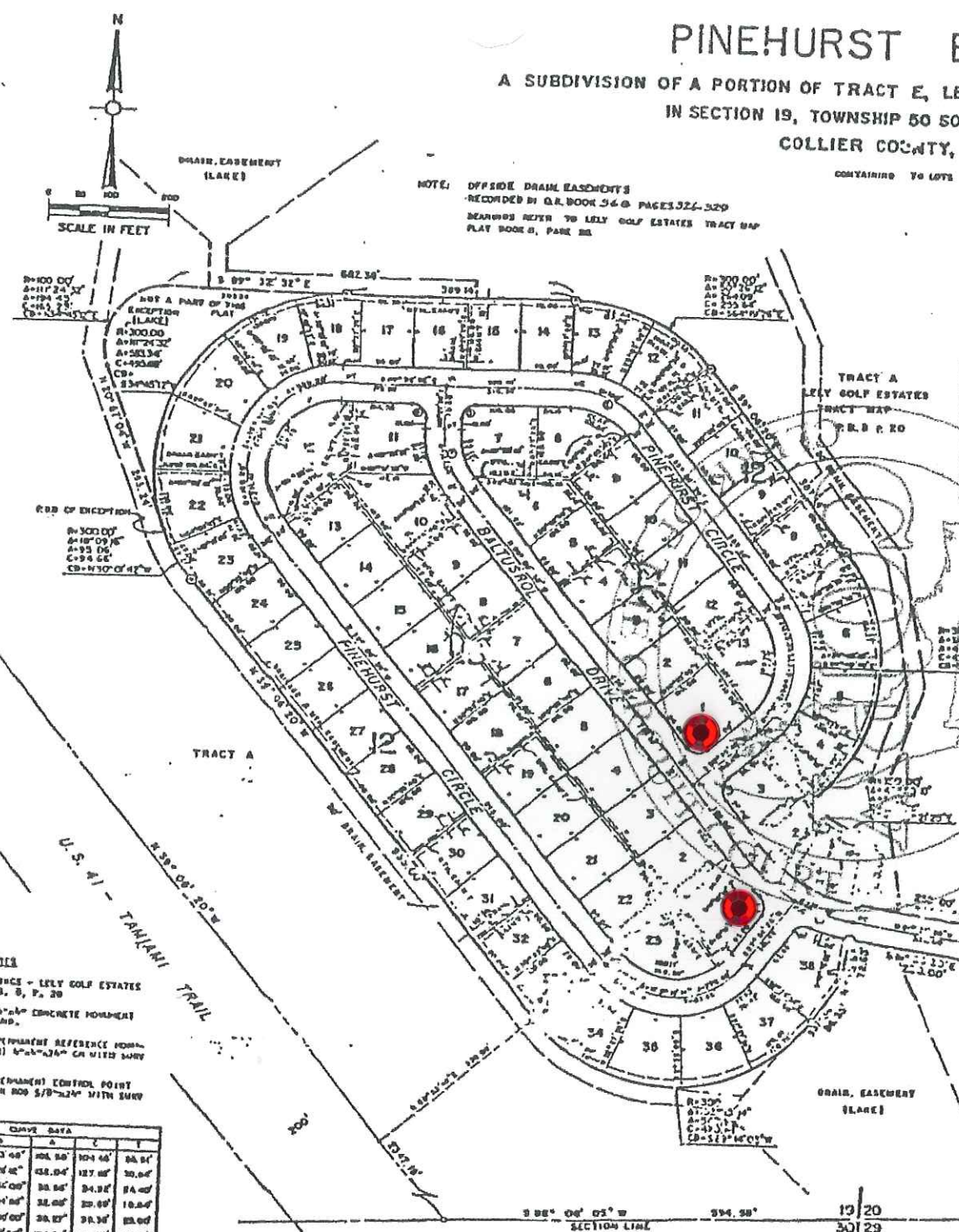


# PINEHURST ESTATES

A SUBDIVISION OF A PORTION OF TRACT E, LELY GOLF ESTATES TRACT MAP, PB 8, P. 20,  
IN SECTION 19, TOWNSHIP 50 SOUTH, RANGE 26 EAST,  
COLLIER COUNTY, FLORIDA

PREPARED BY:  
TRI-COUNTY ENGINEERING, INC.  
CIVIL & STRUCTURAL ENGINEERS,  
LAND PLANNERS & SURVEYORS  
DADES, PUNTA GORDA, DEERING LAKE PLACID  
AND SARASOTA, FLORIDA  
THE PROJECT 8847-C DATE 07/23



**LEGAL DESCRIPTION**  
TRACT E, LELY GOLF ESTATES TRACT MAP, as recorded in Plat Book 8, Page 20, Public Records of Collier County, Florida, less and except the following described portion thereof: From the inner portion of Collier County, Florida, and the Northwestly right-of-way line of U.S. 41 (S.E. 30), on shown on said plat of Lely Golf Estates Tract Map, run N 39°06'20"W, for 2307.15 feet, thence S 50°57'00"W, for 230.00 feet to a point on the Southwesterly boundary of said Tract E, thence along the boundary of said Tract E: N 39°06'10"W, for 935.00 feet to the Northwest, having a radius of 300.00 feet and subtended by a chord having a length of 34.66 feet and bearing a 30°51'42"W to a point of tangency having the POINT OF BEGINNING of said exception thence N 20°57'00"W, for 293.24 feet to a point of tangency having a radius of 300.00 feet and subtended by a chord having a length of 161.33 feet and bearing S 34°51'27"E to a point of tangency having a radius of 300.00 feet and subtended by a chord having a length of 161.33 feet and bearing S 34°51'27"E to the POINT OF BEGINNING of said exception containing 25.94 acres, more or less.

**DEDICATION**  
BOTH ALL HERETO THESE PRESENTS, THAT LELY ESTATES, INC., A TEXAS CORPORATION AUTHORIZED TO DO BUSINESS IN FLORIDA, THE OWNER OF THE HEREIN DESCRIBED LANDS, BY ITS VICE-PRESIDENT CHRISTIAN W. BURELOT, HAS CAUSED TO BE MADE THIS PLAT ENTITLED "PINEHURST ESTATES", AND DOES HEREBY DEDICATE THE STREETS AND EASEMENTS AS SHOWN HEREON TO THE PERPETUAL USE OF THE PUBLIC FOR THE PURPOSES SHOWN.  
IN WITNESS WHEREOF, SAID OWNER HAS CAUSED THESE PRESENTS TO BE SIGNED THIS 17 DAY OF Nov 1973 A.D.  
SIGNED IN THE PRESENCE OF:  
*[Signatures]*  
LELY ESTATES, INC.  
BY: *[Signature]*  
CHRISTIAN W. BURELOT  
VICE-PRESIDENT

**ACKNOWLEDGMENT**  
STATE OF FLORIDA  
COUNTY OF COLLIER  
I HEREBY CERTIFY THAT ON THIS DAY BEFORE ME, A NOTARY PUBLIC DULY AUTHORIZED IN THE STATE AND COUNTY NAMED ABOVE, TO WIT: COLLIER COUNTY, FLORIDA, BY THE VICE-PRESIDENT OF LELY ESTATES, INC., IN AND BY EXECUTED THE FOREGOING DEDICATION AND ACKNOWLEDGED BEFORE ME THAT HE EXECUTED THE FOREGOING DEDICATION IN THE NAME OF AND FOR THAT CORPORATION, AND THAT THE FOREGOING DEDICATION IS THE ACT OF SAID CORPORATION.  
WITNESS MY HAND AND OFFICIAL SEAL IN THE COUNTY AND STATE NAMED ABOVE THIS 17 DAY OF Nov A.D. 1973.  
MY COMMISSION EXPIRES:  
June 30, 1975  
*[Signature]*  
NOTARY PUBLIC  
STATE OF FLORIDA AT LARGE

**APPROVALS**  
THIS PLAT APPROVED BY COLLIER COUNTY PLANNING COMMISSION, COLLIER COUNTY, FLORIDA, THIS 17th DAY OF Nov A.D. 1973.  
*[Signature]*  
PLANNING COMMISSION MEMBER  
THIS PLAT APPROVED BY COLLIER COUNTY ENGINEER THIS 21st DAY OF Dec A.D. 1973.  
*[Signature]*  
COUNTY ENGINEER  
THIS PLAT FILED IN THE COLLIER COUNTY HEALTH DEPARTMENT, COLLIER COUNTY, FLORIDA, THIS 17th DAY OF Nov A.D. 1973, PROVIDING COMPLIANCE WITH THE HEALTH DEPARTMENT REQUIREMENTS.  
*[Signature]*  
HEALTH DEPARTMENT  
DATE: Nov 20, 1973  
BY: *[Signature]*  
REG. NO. 12345

**FILING RECORD**  
I HEREBY CERTIFY THAT THIS PLAT HAS BEEN RECORDED BY ME TO THIS DATE IN COMPLIANCE WITH THE REQUIREMENTS OF CHAPTER 173, SECTIONS 173.01 THROUGH 173.05, F.S., AND THAT THIS PLAT IS FILED FOR RECORD IN PLAT BOOK 12, PAGE 1, AND THAT THE PUBLIC RECORDS OF COLLIER COUNTY, FLORIDA, WILL BE MAINTAINED IN ACCORDANCE WITH THE REQUIREMENTS OF CHAPTER 173, SECTIONS 173.01 THROUGH 173.05, F.S.  
*[Signature]*  
COUNTY CLERK

**SURVEYOR'S NOTES**  
BASIS OF BEARINGS - LELY GOLF ESTATES TRACT MAP, P. 8, P. 20

- DENOTES 6" x 6" CONCRETE MONUMENT (P.M.) FOUND.
- DENOTES PERMANENT REFERENCE MONUMENT (P.M.) 6" x 6" x 36" CONCRETE MONUMENT.
- DENOTES PERMANENT CONTROL POINT (C.P.) FROM 800 5/8" x 3/4" WITH SURV. CAP.

STATION	BEARING	DISTANCE	REMARKS
1	S 89° 12' 32" E	642.34'	
2	S 89° 12' 32" E	309.14'	
3	S 89° 12' 32" E	309.14'	
4	S 89° 12' 32" E	309.14'	
5	S 89° 12' 32" E	309.14'	
6	S 89° 12' 32" E	309.14'	
7	S 89° 12' 32" E	309.14'	
8	S 89° 12' 32" E	309.14'	
9	S 89° 12' 32" E	309.14'	
10	S 89° 12' 32" E	309.14'	
11	S 89° 12' 32" E	309.14'	
12	S 89° 12' 32" E	309.14'	
13	S 89° 12' 32" E	309.14'	
14	S 89° 12' 32" E	309.14'	
15	S 89° 12' 32" E	309.14'	
16	S 89° 12' 32" E	309.14'	
17	S 89° 12' 32" E	309.14'	
18	S 89° 12' 32" E	309.14'	
19	S 89° 12' 32" E	309.14'	
20	S 89° 12' 32" E	309.14'	
21	S 89° 12' 32" E	309.14'	
22	S 89° 12' 32" E	309.14'	
23	S 89° 12' 32" E	309.14'	
24	S 89° 12' 32" E	309.14'	
25	S 89° 12' 32" E	309.14'	
26	S 89° 12' 32" E	309.14'	
27	S 89° 12' 32" E	309.14'	
28	S 89° 12' 32" E	309.14'	
29	S 89° 12' 32" E	309.14'	
30	S 89° 12' 32" E	309.14'	
31	S 89° 12' 32" E	309.14'	
32	S 89° 12' 32" E	309.14'	
33	S 89° 12' 32" E	309.14'	
34	S 89° 12' 32" E	309.14'	
35	S 89° 12' 32" E	309.14'	
36	S 89° 12' 32" E	309.14'	
37	S 89° 12' 32" E	309.14'	

2 STREET SIGNS DOWN