

# LELY GOLF ESTATES FOREST HILLS SECTION

### SURVEYOR'S NOTES

⊙ DENOTES PERMANENT REFERENCE MONUMENT.

⤵ 25' RADIUS ON ALL FILLET CURVES.

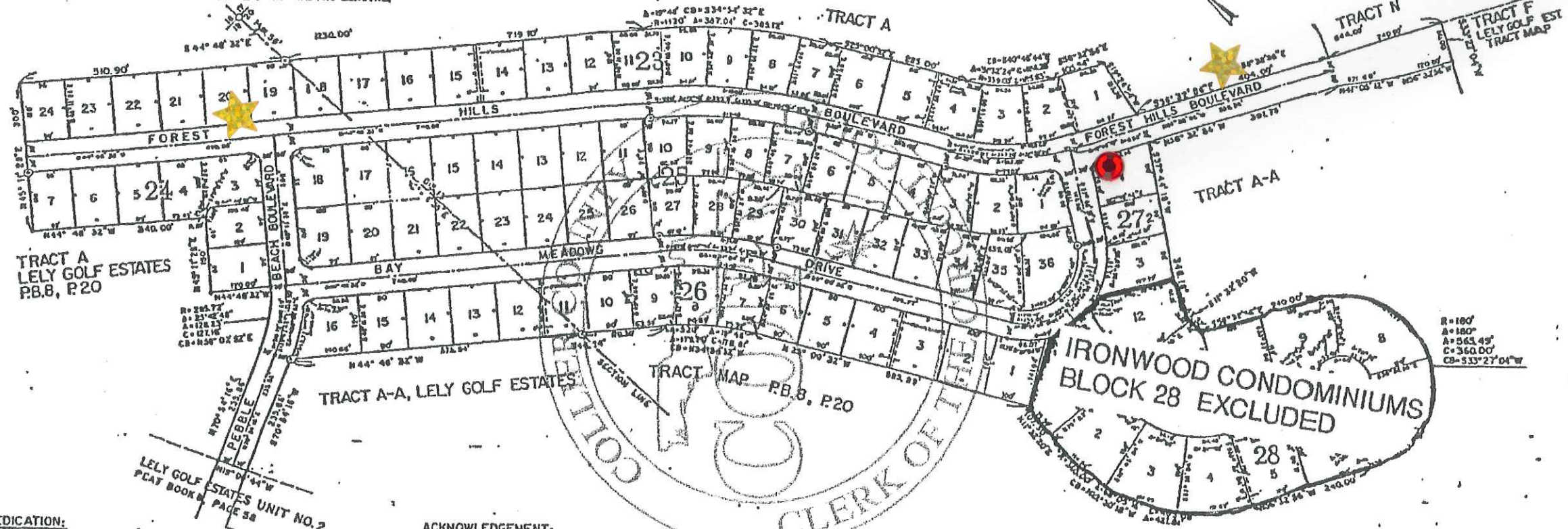
BASIS OF BEARINGS FROM LELY GOLF ESTATES TRACT MAP, P.B. 8, P. 20  
DIMENSIONS ON CURVE LINES ARE ARC LENGTHS.

### LEGAL DESCRIPTION:

A SUBDIVISION OF TRACTS G AND H, LELY GOLF ESTATES TRACT MAP, AS RECORDED IN PLATBOOK 8, PAGE 20, LYING IN SECTIONS 19 AND 20, TWP. 50 S, RGE. 26 E, COLLIER COUNTY, FLORIDA

SCALE 1"=100'  
SCALE IN FEET  
NOV. 1968, REV. SEPT. 1971  
DATE NO. 6-1587-52

TRI-COUNTY ENGINEERING, INC.  
CIVIL & STRUCTURAL ENGINEERS  
LAND PLANNERS & SURVEYORS  
MAPLES, FLORIDA



⊙ 1 STREET SIGN DOWN

★ 2 INFO SIGNS NOT VERTICAL

**DEDICATION:**  
KNOW ALL MEN BY THESE PRESENTS, THAT LELY ESTATES, INC., A TEXAS CORPORATION AUTHORIZED TO DO BUSINESS IN FLORIDA, THE OWNER OF THE HEREIN DESCRIBED LANDS, BY ITS VICE PRESIDENT CHRISTIAN W. DUVEKOT, HAS CAUSED TO BE MADE THIS PLAT ENTITLED "LELY GOLF ESTATES, FOREST HILLS SECTION, AND DOES HEREBY DEDICATE AN EASEMENT FOR UTILITY PURPOSES OVER THE REAR 10 FEET AND SIDE 5 FEET OF EACH LOT AND DOES HEREBY DEDICATE THE STREETS AND DRAINAGE EASEMENTS AS SHOWN HEREON TO THE PERPETUAL USE OF THE PUBLIC FOR PROPER PURPOSES.

IN WITNESS WHEREOF, SAID OWNER HAS CAUSED THESE PRESENTS TO BE SIGNED THIS 15th DAY OF MAY, 1971 A.D.

SIGNED IN THE PRESENCE OF:  
*[Signatures]*  
LELY ESTATES, INC.  
BY CHRISTIAN W. DUVEKOT  
VICE PRESIDENT

**ACKNOWLEDGEMENT:**  
STATE OF FLORIDA  
COUNTY OF COLLIER SS  
I HEREBY CERTIFY THAT ON THIS DAY BEFORE ME, A NOTARY PUBLIC DULY AUTHORIZED IN THE STATE AND COUNTY NAMED ABOVE TO TAKE ACKNOWLEDGMENTS, PERSONALLY APPEARED CHRISTIAN W. DUVEKOT, TO BE KNOWN TO BE THE PERSON DESCRIBED AS VICE PRESIDENT OF LELY ESTATES, INC., IN AND WHO EXECUTED THE FOREGOING DEDICATION AND ACKNOWLEDGED BEFORE ME THAT HE EXECUTED THE FOREGOING DEDICATION IN THE NAME OF AND FOR THAT CORPORATION; THAT AS SUCH CORPORATE OFFICER HE IS DULY AUTHORIZED BY THAT CORPORATION TO DO SO; THAT THE FOREGOING DEDICATION IS THE ACT OF SAID CORPORATION.  
WITNESS MY HAND AND OFFICIAL SEAL IN THE COUNTY AND STATE NAMED ABOVE THIS 15th DAY OF MAY, A.D. 1971.

MY COMMISSION EXPIRES: *[Date]*  
NOTARY PUBLIC, STATE OF FLORIDA  
AT LARGE

**APPROVALS:**  
THIS PLAT APPROVED BY THE COLLIER COUNTY ATTORNEY THIS 18th DAY OF MAY, 1971.  
*[Signature]*  
COUNTY ATTORNEY

**APPROVALS:**  
THIS PLAT APPROVED BY COLLIER COUNTY PLANNING COMMISSION, COLLIER COUNTY, FLORIDA, THIS 15th DAY OF MAY, A.D. 1971.  
*[Signature]*  
EXECUTIVE SECRETARY

THIS PLAT APPROVED BY COLLIER COUNTY ENGINEER THIS 15th DAY OF MAY, A.D. 1971.  
*[Signature]*  
COUNTY ENGINEER

THIS PLAT APPROVED BY COLLIER COUNTY HEALTH DEPARTMENT THIS 15th DAY OF MAY, A.D. 1971 PROVIDING CONNECTIONS TO CENTRAL WATER AND SEWERS ARE MADE AS EACH BECOME AVAILABLE.  
*[Signature]*  
COUNTY SANITARIAN

**COUNTY COMMISSION APPROVAL:**  
THIS PLAT APPROVED IN REGULAR OPEN MEETING BY THE BOARD OF COUNTY COMMISSIONERS OF COLLIER COUNTY, FLORIDA, THIS 15th DAY OF MAY, A.D. 1971, PROVIDED THAT THE PLAT IS FILED IN THE OFFICE OF THE CLERK OF THE CIRCUIT COURT OF COLLIER COUNTY, FLORIDA, WITHIN 90 DAYS FROM THE DATE OF THE APPROVAL.  
*[Signatures]*  
CLERK CHAIRMAN

**FILING RECORD:**  
I HEREBY CERTIFY THAT THIS PLAT HAS BEEN EXAMINED BY ME AND THAT IT COMPLIES IN FULL WITH THE REQUIREMENTS OF CHAPTER 177, LAWS OF THE STATE OF FLORIDA. I FURTHER CERTIFY THAT SAID PLAT WAS FILED FOR RECORD AT 12:25 P.M., THIS 15th DAY OF MAY, A.D. 1971, AND RECORDED IN PLATBOOK 10 AT PAGE 24 OF THE PUBLIC RECORDS OF COLLIER COUNTY, FLORIDA.  
*[Signature]*  
CLERK OF THE CIRCUIT COURT IN AND FOR COLLIER COUNTY, FLORIDA

**SURVEYOR'S CERTIFICATE:**  
IT IS HEREBY CERTIFIED THAT THIS PLAT IS TRUE AND CORRECT AND WAS PREPARED FROM AN ACTUAL SURVEY OF THE PROPERTY MADE BY ME OR UNDER MY SUPERVISION; THAT ALL MONUMENTS SHOWN HEREON ACTUALLY EXIST OR WILL EXIST PRIOR TO FINAL ACCEPTANCE OF THE SUBDIVISION, AND THEIR LOCATION, SIZE, TYPE AND MATERIAL, ARE CORRECTLY SHOWN.  
BY *[Signature]* REGISTERED FLORIDA  
LAND SURVEYOR NO. \_\_\_\_\_  
DATE \_\_\_\_\_

