

OR 4931 PG 646

LOT 1, BLOCK 31 EXCLUDED

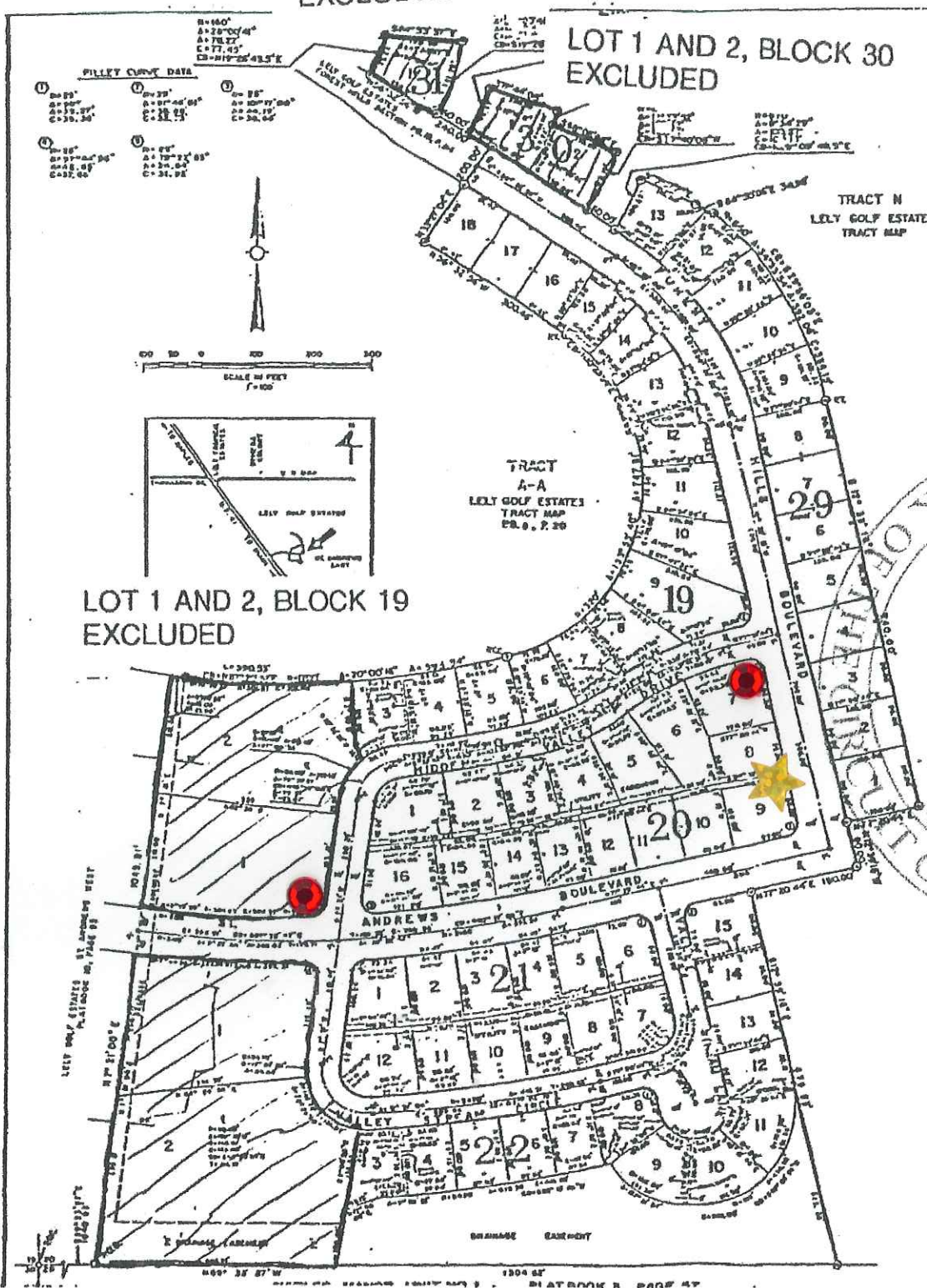
LOT 1 AND 2, BLOCK 30 EXCLUDED

PLATBOOK 10, PAGE 98

LELY GOLF ESTATES ST. ANDREWS EAST

A SUBDIVISION IN SECTION 20, TOWNSHIP 50 S., RANGE 26 E., COLLIER COUNTY, FLORIDA

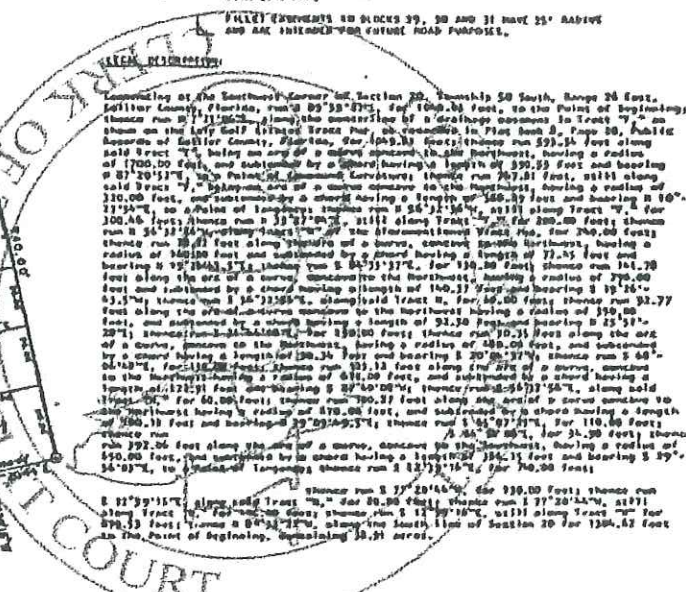
CONTAINING 77 LOTS



SURVEYOR'S NOTE
 BASIS OF BEARINGS - LELY GOLF ESTATES TRACT MAP, P.B. 8, P. 30
 THERE SHALL BE A 10 FOOT WIDE EASEMENT ALONG THE FRONT OF EACH LOT FOR UNDERPASS OF UTILITIES ONLY.

• DENOTES 4" x 4" CONCRETE PERMANENT (PM) FOUND.
 • DENOTES PERMANENT REFERENCE MONUMENT (PRM) 12" x 12" x 12" IN WITH SURV MAP.
 • DENOTES PERMANENT CONTROL POINT (PCP) 12" x 12" x 12" WITH SURV MAP.

FILLET EASEMENTS TO BLOCKS 29, 30 AND 31 HAVE 15' BARRIER AND ARE INTERLOCKED FOR FUTURE ROAD PURPOSES.



TRI-COUNTY ENGINEERING, INC.
 CIVIL & STRUCTURAL ENGINEERS
 LAND PLANNERS & SURVEYORS
 MAPLES & PONTA BONNA, FLORIDA
 DWS. REG. C-1367-100 SEPT. 1972

THIS PLAN APPROVED BY COLLIER COUNTY PLANNING COMMISSION, COLLIER COUNTY, FLORIDA, THIS 23rd DAY OF JANUARY, A.D. 1973.
Carl E. Cummings
 CHIEF PLANNING COMMISSIONER

THIS PLAN APPROVED BY COLLIER COUNTY ENGINEER THIS 23rd DAY OF JANUARY, A.D. 1973.
Harold R. Pate
 COUNTY ENGINEER

THIS PLAN APPROVED BY COLLIER COUNTY HEALTH DEPARTMENT THIS 23rd DAY OF JANUARY, A.D. 1973 PROVIDING CONNECTIONS TO CENTRAL WATER AND SEWER ALL MADE AS EACH BECOME AVAILABLE.
Robert R. Bluhm, Jr.
 COUNTY SANITATION

COUNTY COMMISSION APPROVAL
 THIS PLAN APPROVED IN REGULAR OPEN MEETING BY THE BOARD OF COUNTY COMMISSIONERS OF COLLIER COUNTY, FLORIDA, THIS 7th DAY OF FEBRUARY, A.D. 1973. PROVIDED THAT THIS PLAN IS FILED IN THE OFFICE OF THE CLERK OF THE COUNTY COURT OF COLLIER COUNTY, FLORIDA.
Marshall S. Mass *Carl M. Wayne*
 CLERK

DECLARATION
 KNOW ALL MEN BY THESE PRESENTS, THAT LELY ESTATES, INC., A TRUST CORPORATION INCORPORATED IN THE STATE OF FLORIDA, THE OWNER OF THE HEREIN DESCRIBED LANDS, BY ITS VICE-PRESIDENT CHRISTOPHER W. BROWNE, HAS CAUSED TO BE MADE THIS PLAN IN ACCORDANCE WITH THE STATUTES OF THE STATE OF FLORIDA TO BE RECORDED IN THE PUBLIC RECORDS OF COLLIER COUNTY, FLORIDA, TO BE EVIDENCE OF THE PERPETUAL USE OF THE PUBLIC FOR THE PURPOSES THEREIN.

IN WITNESS WHEREOF, SAID OWNER HAS CAUSED THESE PRESENTS TO BE SIGNED THIS 23rd DAY OF JANUARY, 1973 A.D.

SIGNED IN THE PRESENCE OF: _____
 LELY ESTATES, INC.
 BY: *Christopher W. Browne*
 VICE-PRESIDENT

ACKNOWLEDGMENT
 STATE OF FLORIDA, SS
 COUNTY OF COLLIER

I HEREBY CERTIFY THAT ON THIS DAY BEFORE ME, A NOTARY PUBLIC DULY AUTHORIZED IN THE STATE AND COUNTY NAMED ABOVE, YOU HAVE PERSONALLY APPEARED AND IDENTIFIED YOURSELVES TO ME AS THE PERSONS DESCRIBED AS VICE-PRESIDENT OF LELY ESTATES, INC., IN AND WHO ENTERED THE FOREGOING DECLARATION AND AFFIDAVIT UNDER THE SEAL OF THE FOREGOING PUBLIC OFFICIAL AND AS SUCH COMPOSED OFFICER HE IS ONLY AUTHORIZED BY THAT COMMISSION TO DO SO AND THAT THE FOREGOING DECLARATION IS THE ACT OF SAID CORPORATION.

WITNESS MY HAND AND OFFICIAL SEAL IN THE COUNTY AND STATE NAMED ABOVE THIS 23rd DAY OF JANUARY, A.D. 1973.

MY COMMISSION EXPIRES: *23*
 AT LARGE

APPROVAL
 THIS PLAN APPROVED BY THE COLLIER COUNTY ATTESTED THIS 23rd DAY OF JANUARY, 1973.
D. E. Brown
 COUNTY ATTORNEY

FILED RECORD
 I HEREBY CERTIFY THAT THIS PLAN HAS BEEN EXAMINED BY ME AND THAT IT COMPLIES TO FORM WITH THE REQUIREMENTS OF CHAPTER 127, LAWS OF THE STATE OF FLORIDA. I FURTHER CERTIFY THAT SAID PLAN WAS FILED FOR RECORD AT 4:11 P.M. THIS 24th DAY OF JANUARY, A.D. 1973, AND BEING RECORDED IN PLATBOOK 10, PAGE 98 OF THE PUBLIC RECORDS OF COLLIER COUNTY, FLORIDA.

SURVEYOR'S CERTIFICATE
 IT IS HEREBY CERTIFIED THAT THIS PLAN IS A TRUE AND CORRECT REPRESENTATION OF THE ABOVE HEREIN DESCRIBED LANDS AND HAS BEEN PREPARED FROM A SURVEY OF THE PROPERTY MADE UNDER MY SUPERVISION, THAT ALL PERMANENT REFERENCE MONUMENTS (PM) SHOWN AND HEREON BEING PLACED AND THAT ALL PERMANENT CONTROL POINTS (PCP) SHOWN AND HEREON BEING PLACED ACCORDING TO CHAPTER 127, STATUTES OF FLORIDA, PROVIDED THAT THIS PLAN COMPLETES ALL THE SURVEY REQUIREMENTS OF CHAPTER 127, STATUTES OF FLORIDA.

TRI-COUNTY ENGINEERING, INC.
Carl M. Wayne
 SURVEYOR
 REG. NO. C-1367-100
 FLA. REG. S. 8, 220

2 STREET SIGNS DOWN
 1 INFO SIGN NOT VERTICAL

LOT 1 AND 2, BLOCK 22 EXCLUDED