

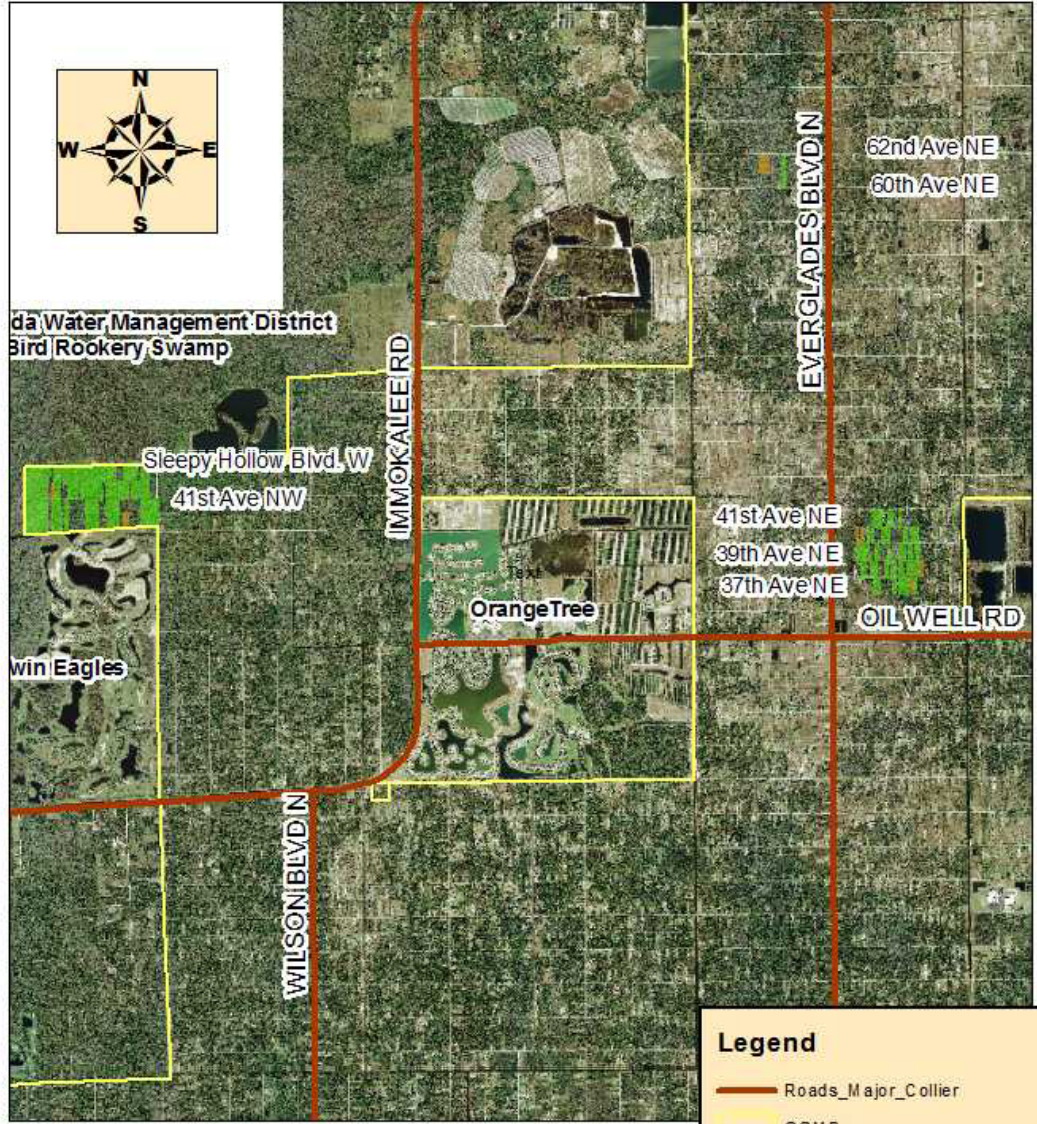
Golden Gate Estates Area Wetlands & Conservation Collier Acquisition Areas, TDR Program

Jerry Kurtz, P.E.

**CWIP Meeting
January 13, 2017**



Conservation Collier: Multi-Parcel Projects and Preserve within NGGE



Legend

- Roads_Major_Collier
- GGMP

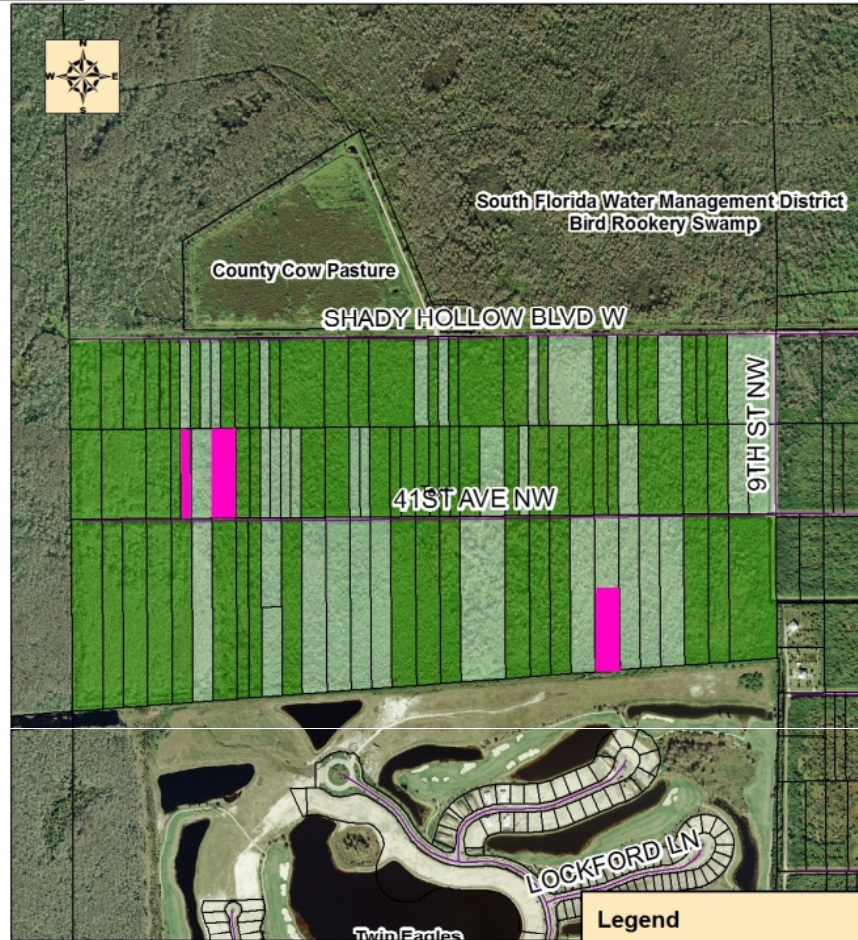
Conservation Collier Lands

- Acquired
- Donation

Data Source: Parcels - Collier County Property Appraiser
 Created by: Conservation Collier Staff/AS
 G:\Conservation Collier\maps\acquired properties\ NGGE Zoom Out.mxd and .jpg
 8-24-18



Conservation Collier: Red Maple Swamp Preserve NGGE Unit 53



0 500 1,000 Feet

Data Source: Parcels - Collier County Property Appraiser
Created by: Conservation Collier Staff/AS
G:\Conservation Collier\properties\2015\
Land donations\Collier 36.mxd and .jpg
2-12-15

Legend

Status of Properties

- Donation
- Conservation Collier acquired
- A-list



Conservation Collier: Winchester Head

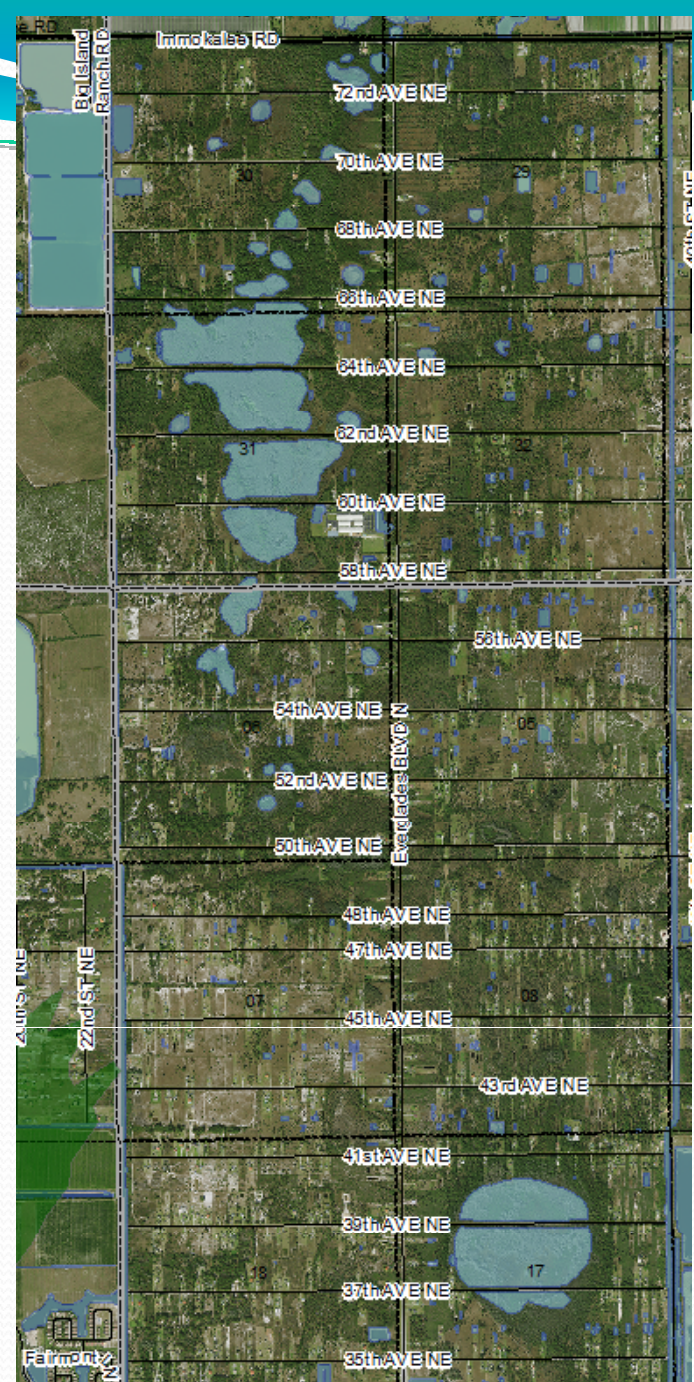


Aerial and 2013 map source: Collier County
Property Appraiser
Conservation Collier Map
G: Conservation Collier/Properties
/2015/Land Donations/
PNC Bank/PNC Bank Parcel AS
2-4-16

Legend

- Winchester Head Multi-Parcel Project
- Winchester Head Multi-Parcel Project**
- A-list
- Acquired
- Donation
- PNC Bank Proposed donation
- Parcels Owned by CSWCD

Horespen Strand



TDR Program & Conservation Collier

Location	Total Acres	Acres Obtained	Acres Remaining
Red Maple Swamp Preserve	305	200	105
Winchester Head	158	80	78

Draft Motion

Motion supporting the use of the TDR program to acquire select parcels in Golden Gate Estates, such as Winchester Head, Red Maple Swamp, and Horsepen Strand, as a watershed management strategy to reduce density and preserve wetlands for storage and filtration, subject to analysis by appropriate experts and the BCC.