

FBCH 

 ESEL

NCHN 

NCHNE

 EGEN

CPMS

~~CRXXX~~ 

 WATE

 ST44

FBAC 

GLPR 

PRPR 

 SGEL

 PAEL

# NCH-NE -N26° 16.65' W81° 41.30'

North Collier Hospital / NE

*Day/Night*

## Hazards

Light poles along Bellair Bay Dr.

Power lines N-S along Collier Blvd.

Power lines E-W along Immokalee Rd.

Loose sand and dust on side of road

**FD must block off both directions of road!**



**ESEL** - N26° 20.36' W081° 32.85'

**Estates Elementary School**

*Day/Night*

Hazards

None



**FBCH** - N26° 19.43' W081° 49.07'

**First Baptist Church/ Lee County**

**Day/Night**

Hazards

Powerline along Vanderbilt Beach Dr.

Tree in center of field



**NCHN** - N26° 16.44' W081° 47.28'

**North Collier Hospital**

**Day/Night**

Hazards

Tall structures surrounding Helistop

LZ possibly unsuitable during conditions of strong westerly/southerly winds

Alternate LZ: use CREE for trauma calls



**CREE** - N 26° 16.18' W 0 81° 47.44'

**Creekside Blvd and Goodlette-Frank Rd.**

**Day/Night**

Hazards

Open field behind Arthrex building.

Field is slightly uneven, with large rocks in some areas.

LZ marked as (H) in SW section of field

Powerline along Creekside St. on W side of field

LZ used as alternate trauma pick up for NCH-N



**WATE** - N26° 15.86'W081° 44.81'

Water Park on Livingston Rd. (NW field)

*Day/Night*

Hazards

Soccer fields with flood lights on all quadrants



**EGEN** - N26° 17.47' W0 81° 35.67'

E's General Store

*Day/Night*

Hazards

Construction on north side of field; LZ unaffected

Powerlines W and N



△  
EGEN

Immokalee Rd



**SPEL** - N26° 16.01' W081° 31.54'

Sabel Palm Elementary School

*Day/Night*

Hazards



**ST44** - N26° 15.03' W081° 48.43'

**Station 44**

*Day/Night*

Hazards

Be mindful of onlookers



△  
ST44

Hammock @ak-djr

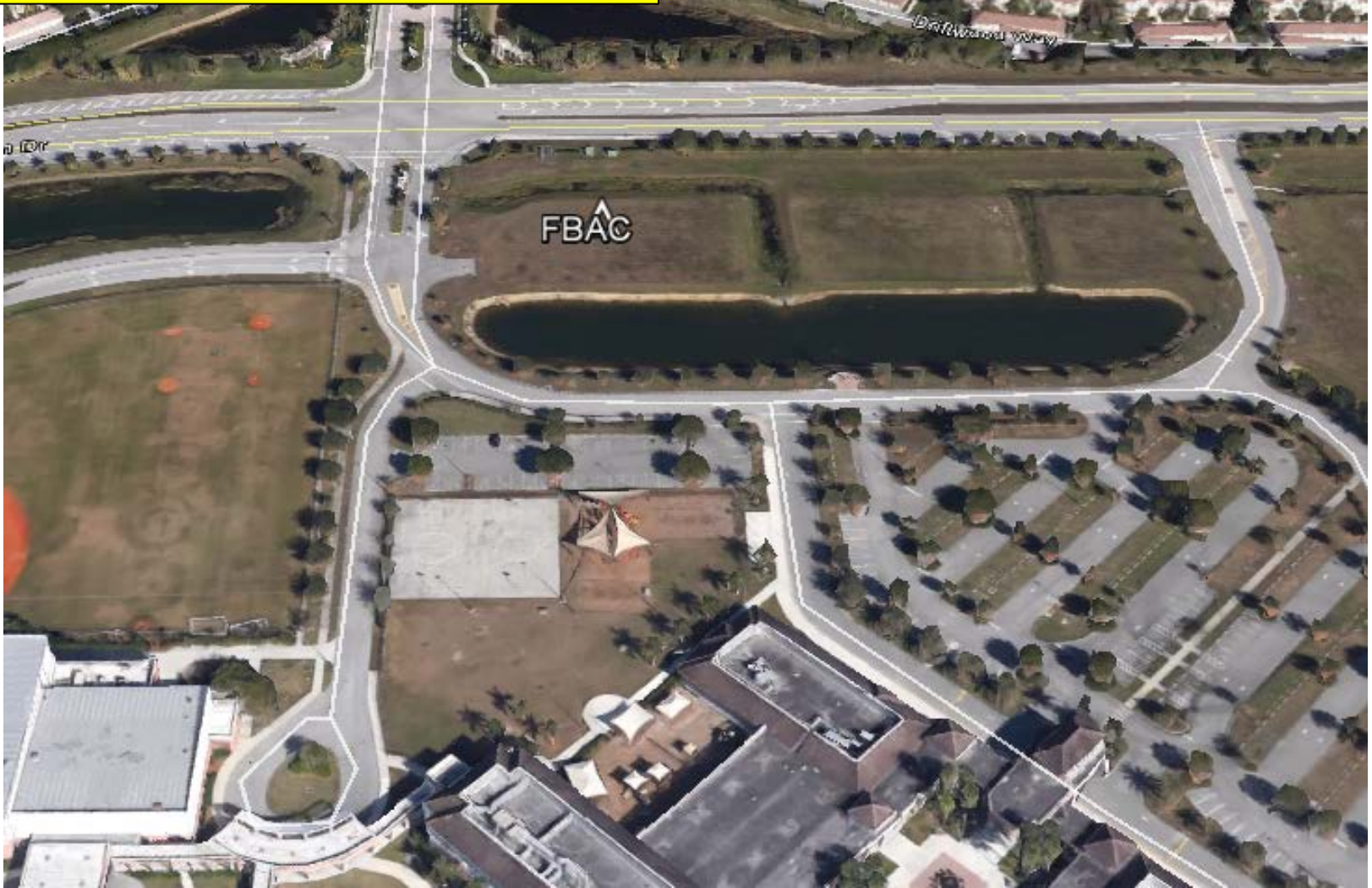
**FBAC** - N26° 13.97' W081° 45.38'

**First Baptist Academy**

*Day/Night*

Hazards

Tall power lines along Livingston Rd. to the east



**GLPR** - N26° 12.83' W081° 47.46'

Goodlette Frank Rd. & Pine Ridge Rd.

*Day/Night*

Hazards

Double set of power lines on west side along Goodlette



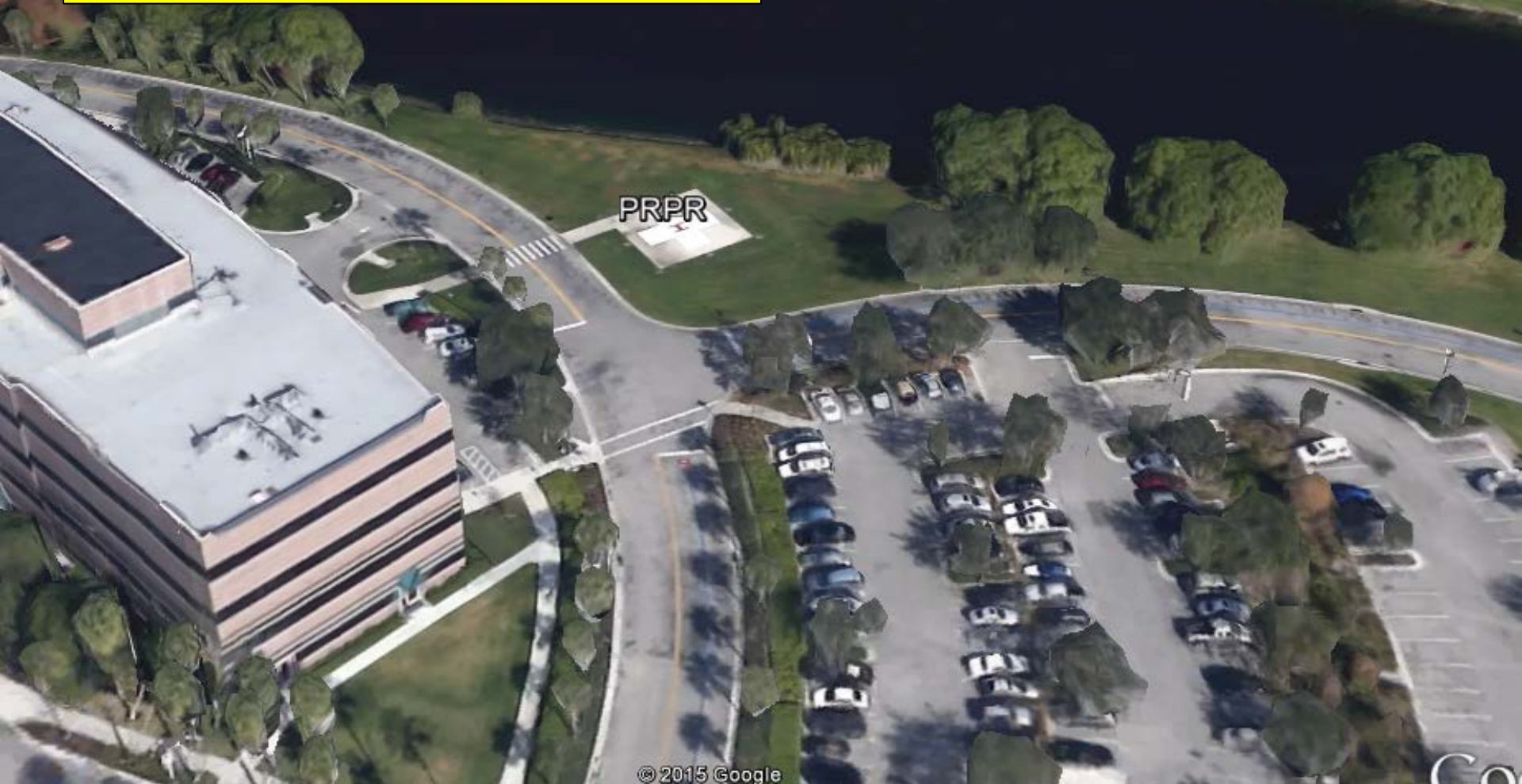
**PRPR** - N26° 12.86' W081° 43.90'

Physicians Regional Pine Ridge Hospital pad

*Day/Night*

Hazards

Trees, vehicles, pedestrians



**SGEL** - N 26° 12.54' W 0 81° 48.31'

**Seagate Elementary School**

*Day/Night*

Hazards

Flood lights all quadrants



**PAEL** - N26° 10.89' W081° 46.23'

**Poinciana Elementary School**

*Day / Night*

Hazards

Sports Field W of School

Fence surrounding field and possibly soccer goals in field

