

ESEL

FBCH

EGEN

NCHNE

CPMS

NCHN
CREE

WATE

ST44

FBAC

GLPR

PRPR

SGEL

PAEL

© 2015 Google

Google earth

NCH-NE $-N26^{\circ} 16.65' W81^{\circ} 41.30'$

North Collier Hospital / NE

Day/Night

Hazards

Light poles along Bellair Bay Dr.

Power lines N-S along Collier Blvd.

Power lines E-W along Immokalee Rd.

Loose sand and dust on side of road

FD must block off both directions of road!



ESEL - N26° 20.36' W081° 32.85'

Estates Elementary School

Day/Night

Hazards

None



FBCH - N26° 19.43' W081° 49.07'

First Baptist Church/ Lee County

Day/Night

Hazards

Powerline along Vanderbilt Beach Dr.

Tree in center of field



NCHN - N26° 16.44' W081° 47.28'

North Collier Hospital

Day/Night

Hazards

Tall structures surrounding Helistop

LZ possibly unsuitable during conditions of strong westerly/southerly winds

Alternate LZ: use CREE for trauma calls



CREE - N 26° 16.18' W 0 81° 47.44'

Creekside Blvd and Goodlette-Frank Rd.

Day/Night

Hazards

Open field behind Arthrex building.

Field is slightly uneven, with large rocks in some areas.

LZ marked as (H) in SW section of field

Powerline along Creekside St. on W side of field

LZ used as alternate trauma pick up for NCH-N



WATE - N26° 15.86'W081° 44.81'

Water Park on Livingston Rd. (NW field)

Day/Night

Hazards

Soccer fields with flood lights on all quadrants



EGEN - N26° 17.47' W0 81° 35.67'

E's General Store

Day/Night

Hazards

Construction on north side of field; LZ unaffected

Powerlines W and N



△
EGEN

Immokalee R.

SPEL - N26° 16.01' W081° 31.54'

Sabel Palm Elementary School

Day/Night

Hazards



ST44 - N26° 15.03' W081° 48.43'

Station 44

Day/Night

Hazards

Be mindful of onlookers



△
ST44

862

Hammock @ak-dr

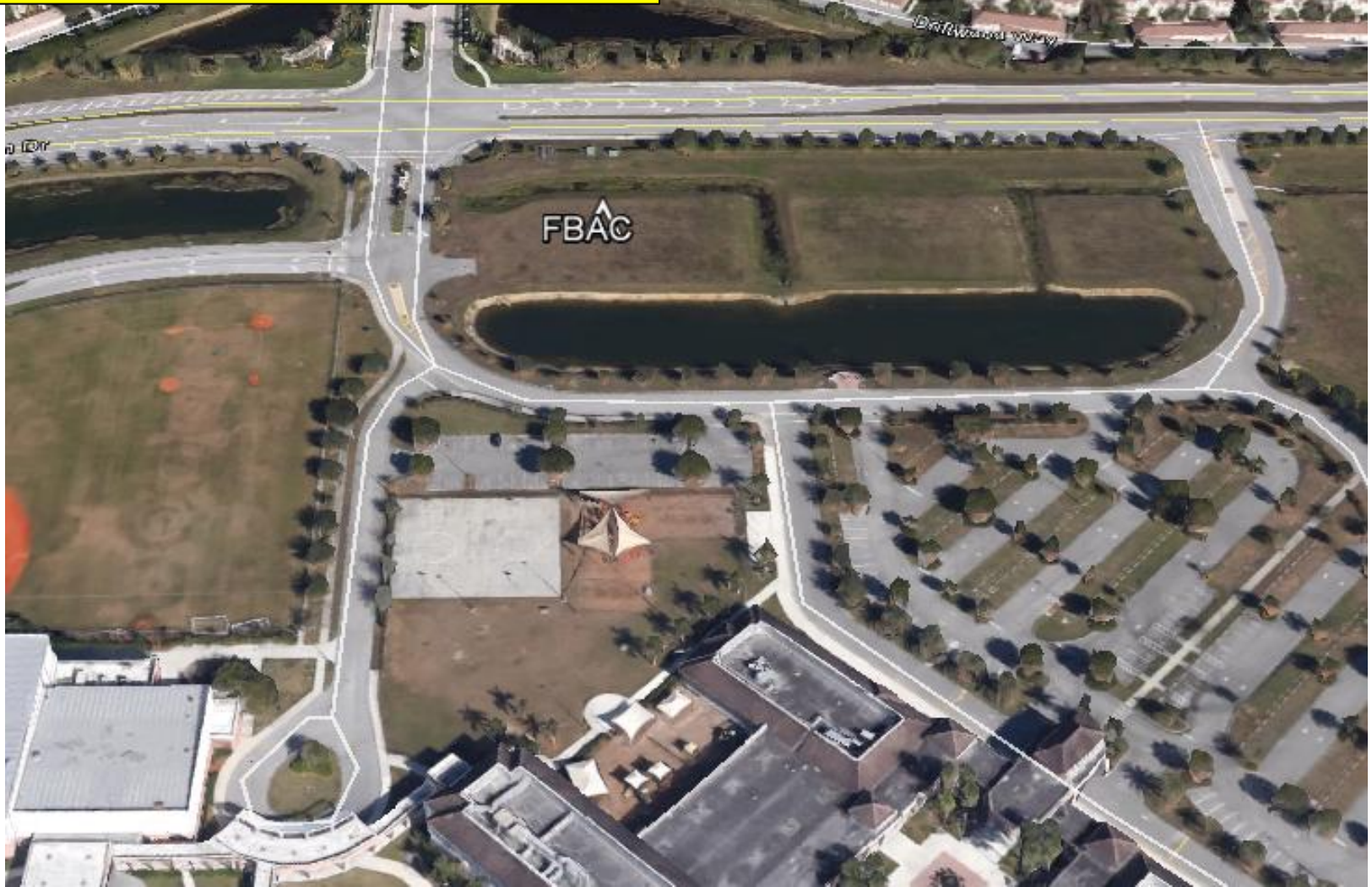
FBAC - N26° 13.97' W081° 45.38'

First Baptist Academy

Day/Night

Hazards

Tall power lines along Livingston Rd. to the east



GLPR - N26° 12.83' W081° 47.46'

Goodlette Frank Rd. & Pine Ridge Rd.

Day/Night

Hazards

Double set of power lines on west side along Goodlette



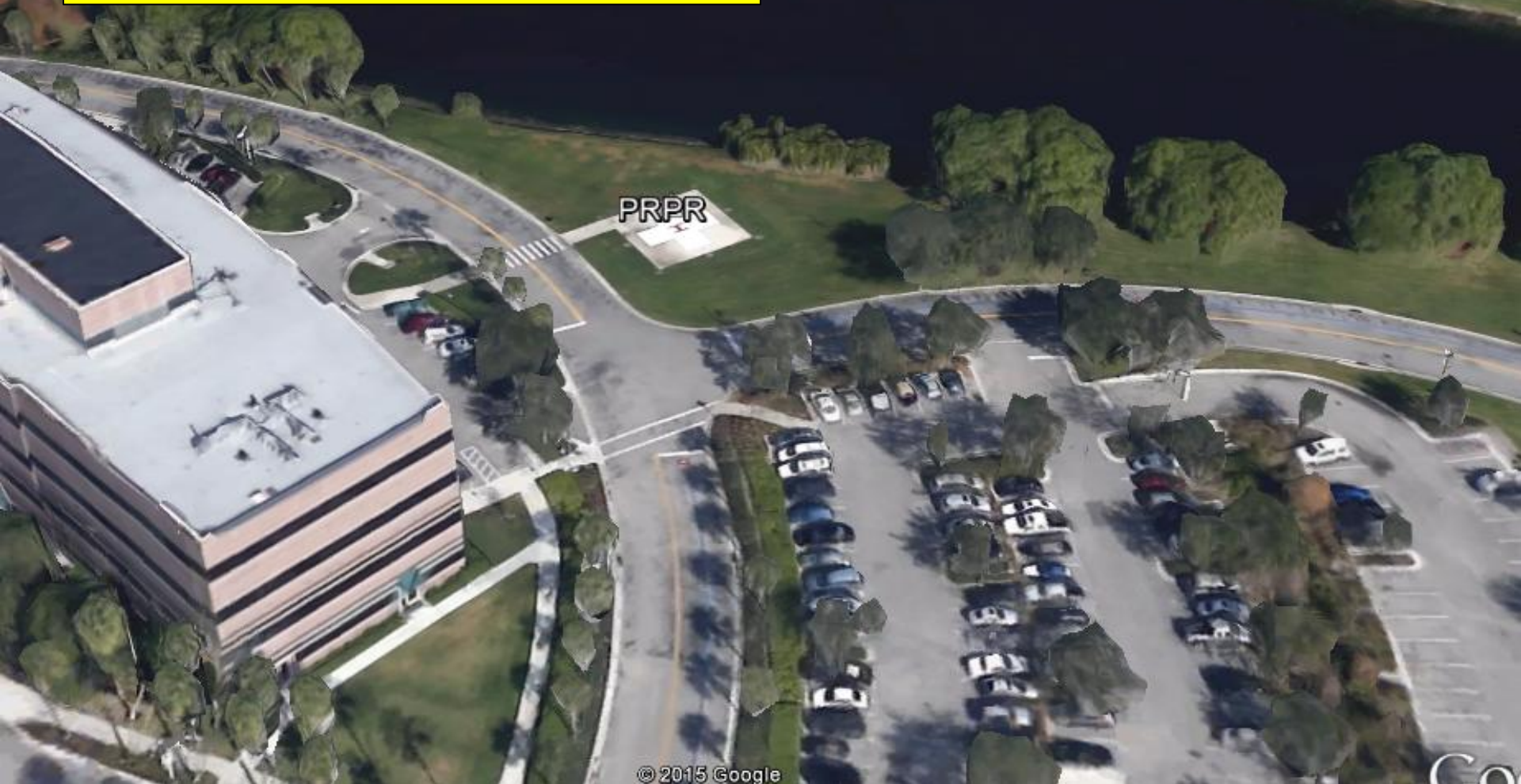
PRPR - N26° 12.86' W081° 43.90'

Physicians Regional Pine Ridge Hospital pad

Day/Night

Hazards

Trees, vehicles, pedestrians



SGEL - N 26° 12.54' W 0 81° 48.31'

Seagate Elementary School

Day/Night

Hazards

Flood lights all quadrants



PAEL - N26° 10.89' W081° 46.23'

Poinciana Elementary School

Day / Night

Hazards

Sports Field W of School

Fence surrounding field and possibly soccer goals in field

