

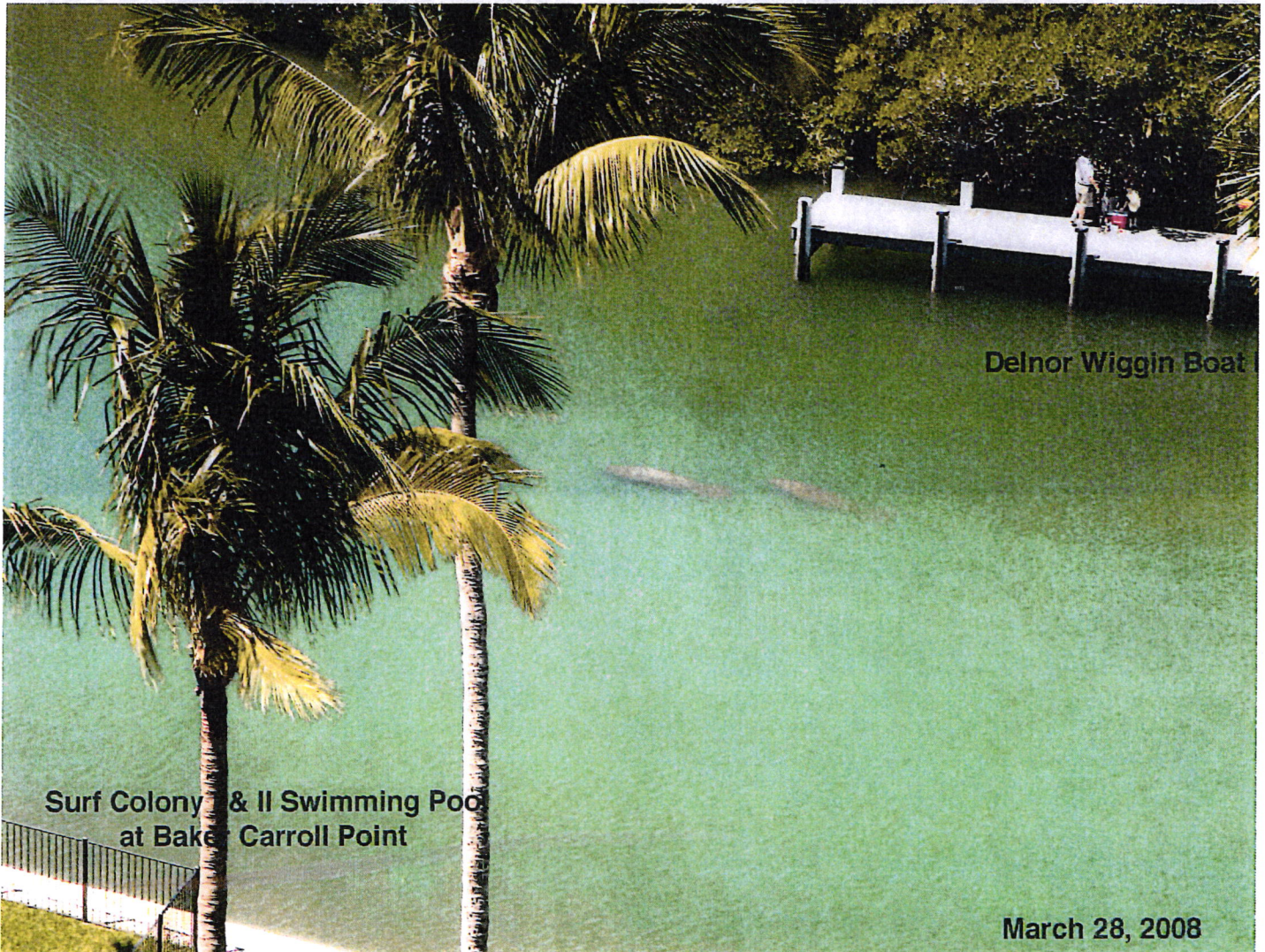
## WightDebbie

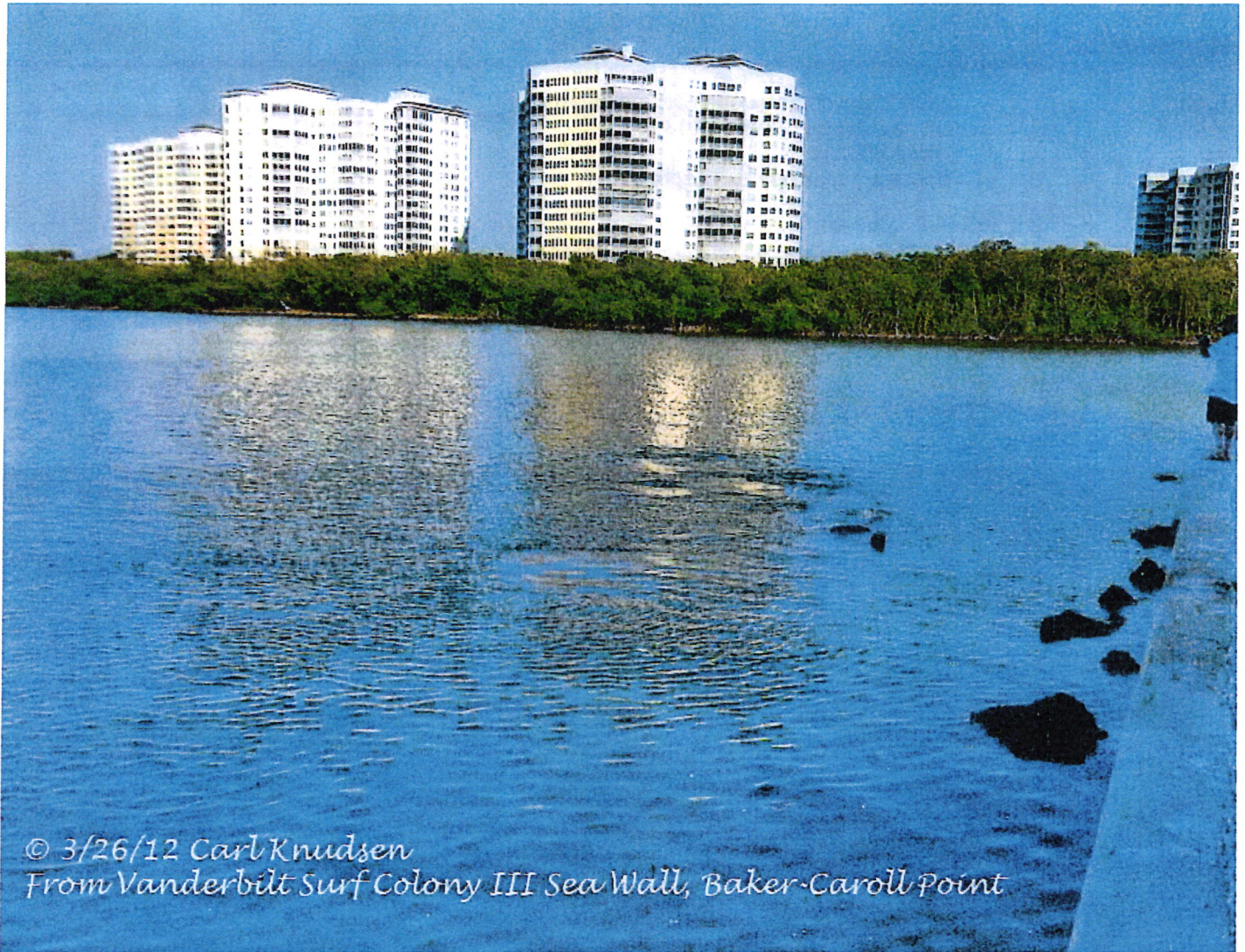
---

**From:** Susan Snyder [ssnyder2@columbus.rr.com]  
**Sent:** Friday, April 01, 2016 10:13 AM  
**To:** WightDebbie  
**Subject:** Manatee sightings in N3 section

Attached are photographs and documentation of manatee sightings in N3 (Vanderbilt Channel) in 2008 and 2012. The last image documents the location by date of some of the manatee sightings from March 26, 2012 - April 2, 2012.

Susan Snyder







© 3/26/12 Carl Knudsen  
From Vanderbilt Surf Colony III Seawall/ Baker-Carroll Point



© 3/26/12 Susan Leach Snyder  
View from 8th Floor of Vanderbilt Surf Colony III/ Baker-Carroll Point

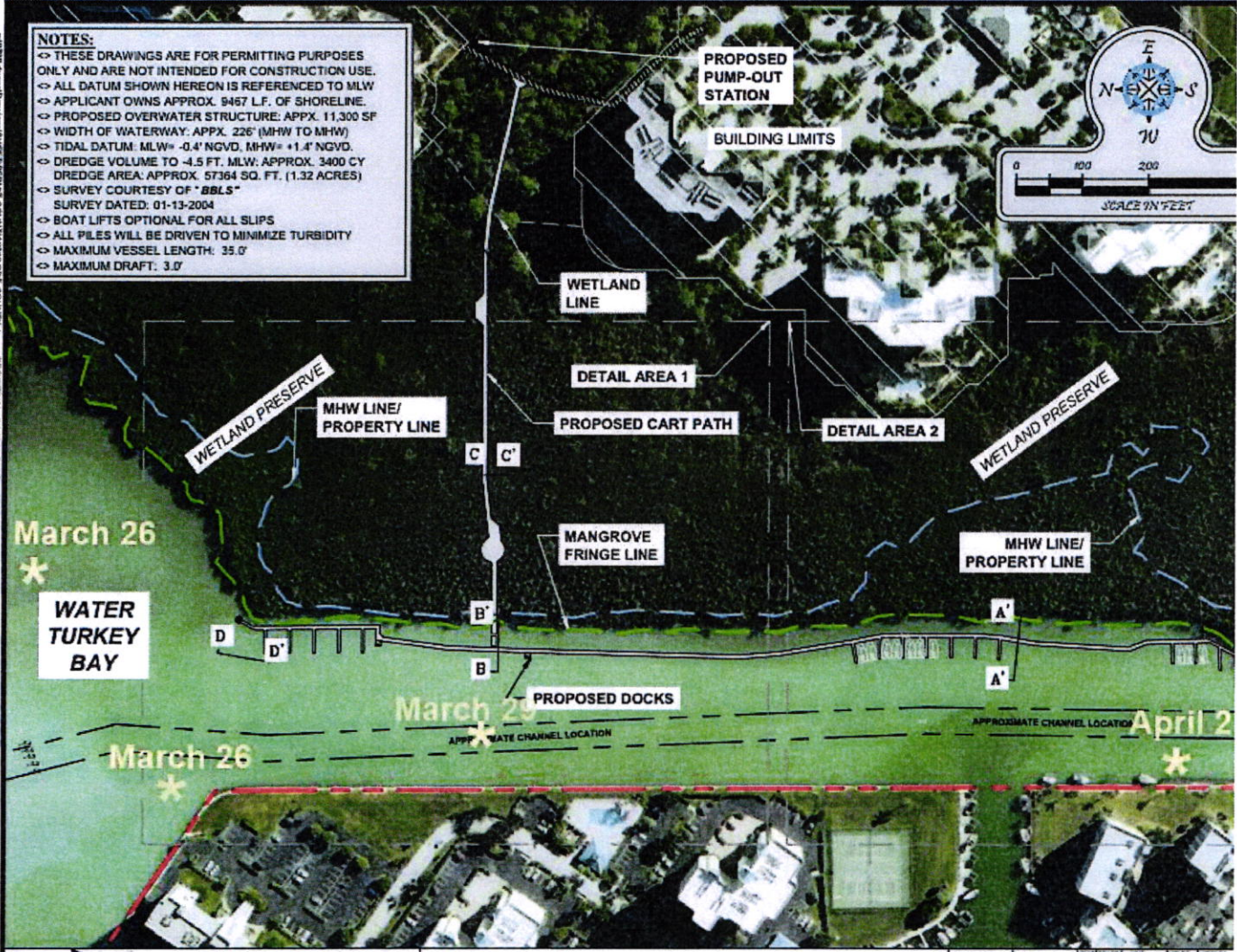
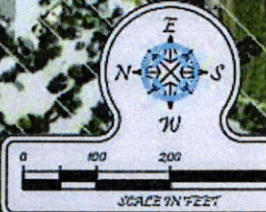




© Taken from Roof of Vanderbilt Surf Colony/ Channel Marker 13/ Water Turkey Bay  
4/7/12 by Susan Leach Snyder

**NOTES:**

- ◁ THESE DRAWINGS ARE FOR PERMITTING PURPOSES ONLY AND ARE NOT INTENDED FOR CONSTRUCTION USE.
- ◁ ALL DATUM SHOWN HEREON IS REFERENCED TO MLW
- ◁ APPLICANT OWNS APPROX. 9467 L.F. OF SHORELINE.
- ◁ PROPOSED OVERWATER STRUCTURE: APPX. 11,300 SF
- ◁ WIDTH OF WATERWAY: APPX. 226' (MHW TO MHW)
- ◁ TIDAL DATUM: MLW = -0.4' NGVD, MHW = +1.4' NGVD
- ◁ DREDGE VOLUME TO -4.5 FT. MLW: APPROX. 3400 CY
- ◁ DREDGE AREA: APPROX. 57364 SQ. FT. (1.32 ACRES)
- ◁ SURVEY COURTESY OF "BBL'S"
- ◁ SURVEY DATED: 01-13-2004
- ◁ BOAT LIFTS OPTIONAL FOR ALL SLIPS
- ◁ ALL PILES WILL BE DRIVEN TO MINIMIZE TURBIDITY
- ◁ MAXIMUM VESSEL LENGTH: 35.0'
- ◁ MAXIMUM DRAFT: 3.0'



 **Turrell, Hall & Associates, Inc.**  
 Marine & Environmental Consulting  
 3584 Exchange Ave. Suite B. Naples, FL 34104-3732  
 Email: [tna@turrell-associates.com](mailto:tna@turrell-associates.com) Phone: (239) 643-0166 Fax: (239) 643-6632

**THE DUNES**  
 PROPOSED DESIGN W AERIAL

DESIGNED	T.T.T.	5					
DRAWN BY	BCB	4					
CREATED	10-25-2010	2					
JOB NO.	9729	1					
SHEET NO.	10 OF 20	1					

SECTION-20 TOWNSHIP- 485 F