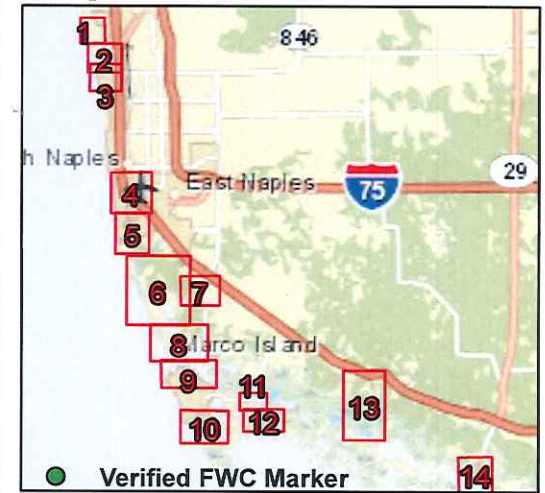




# Hickory Bay Map 1

Date: 10/27/2015



**MARKER INVENTORY**

## State Manatee Protection Areas

20 MPH, 30 MPH IN MARKED CHANNEL

SSMW, 30 MPH IN MARKED CHANNEL

Map by Haden Macbeth - Boating and Waterways

0 0.15 0.3 0.6 Miles

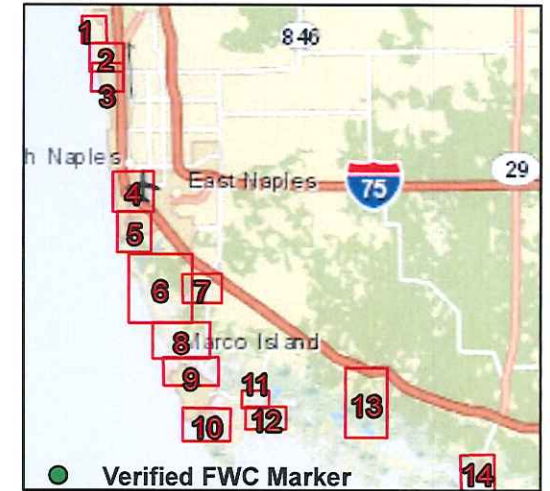
The boundaries depicted on this map document are approximate. This map document is intended for use only at the published scale. These data are intended for informational use only and should not be considered authoritative for navigation, engineering, legal, or other site-specific purpose. FWC does not assume any legal liability or responsibility arising from the use of this product in a manner not intended by the author.





# Wiggins Pass Map 2

Date: 10/27/2015



- MARKER INVENTORY**
- LOCAL ZONES**
- State Manatee Protection Areas**
- 20 MPH, 30 MPH IN MARKED CHANNEL**
- SSMW (ALL YEAR)**
- SSMW, 30 MPH IN MARKED CHANNEL**

Map by Haden Macbeth - Boating and Waterways  
0 0.2 0.4 0.8 Miles

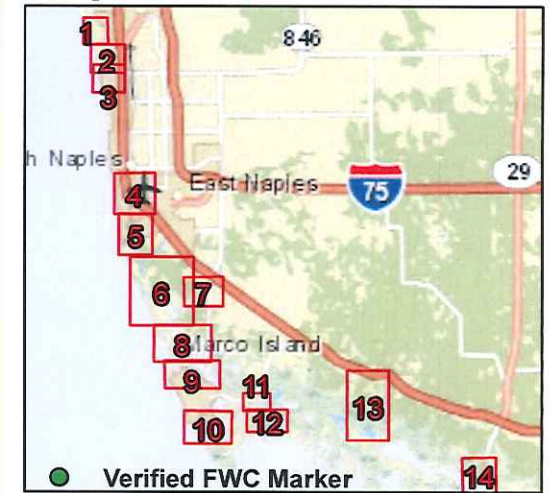
The boundaries depicted on this map document are approximate. This map document is intended for use only at the published scale. These data are intended for informational use only and should not be considered authoritative for navigation, engineering, legal, or other site-specific purpose. FWC does not assume any legal liability or responsibility arising from the use of this product in a manner not intended by the author.





# Vanderbilt Channel Map 3

Date: 10/27/2015



**MARKER INVENTORY**

LOCAL ZONES

### State Manatee Protection Areas

20 MPH, 30 MPH IN MARKED CHANNEL

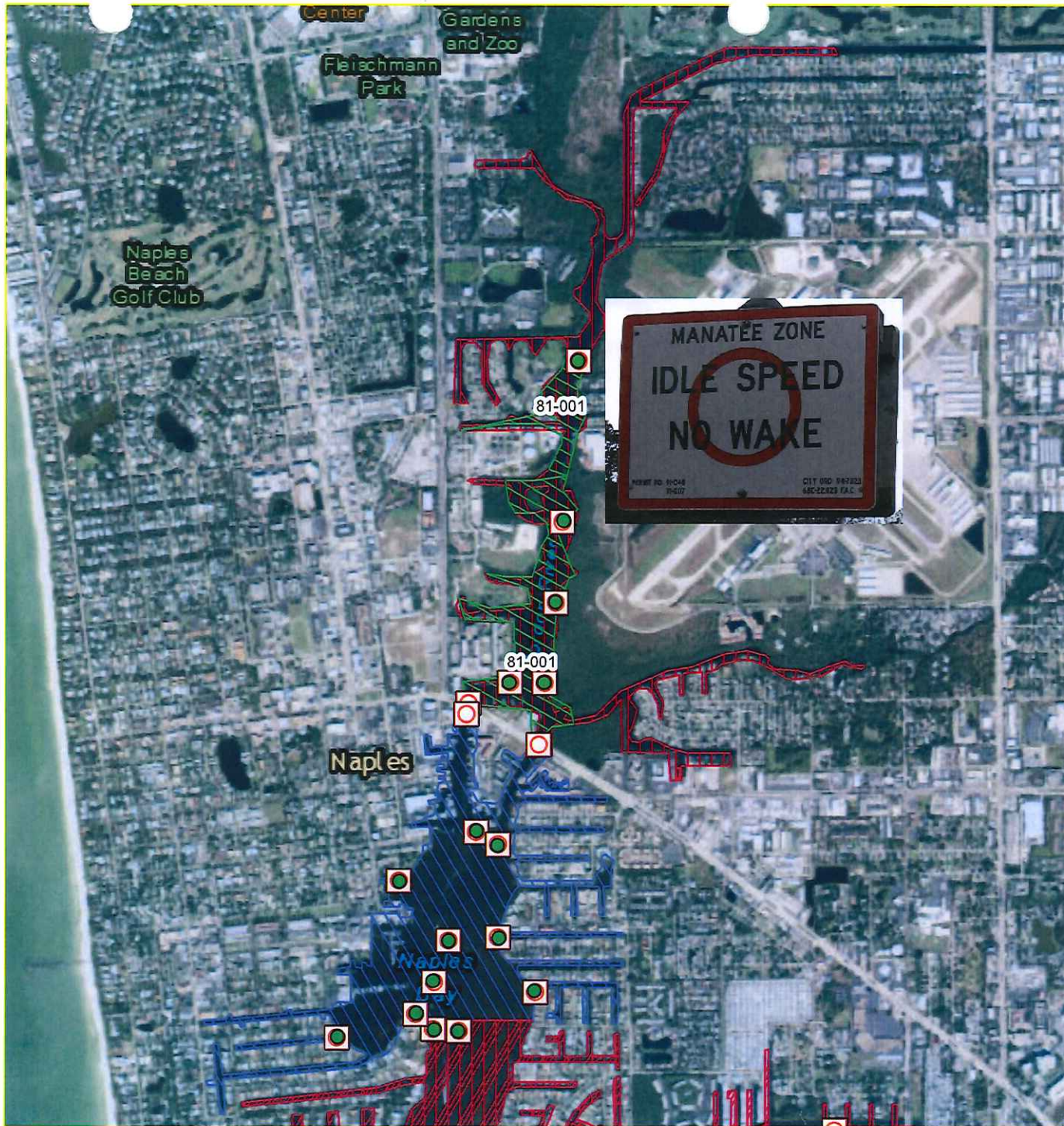
SSMW (ALL YEAR)

Map by Haden Macbeth - Boating and Waterways

0 0.175 0.35 0.7 Miles

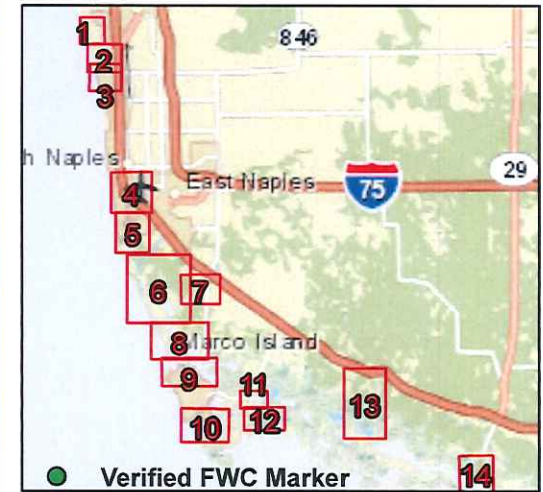
The boundaries depicted on this map document are approximate. This map document is intended for use only at the published scale. These data are intended for informational use only and should not be considered authoritative for navigation, engineering, legal, or other site-specific purpose. FWC does not assume any legal liability or responsibility arising from the use of this product in a manner not intended by the author.





# North Naples Bay Map 4

Date: 10/27/2015



- MARKER INVENTORY**
- LOCAL ZONES**
- State Manatee Protection Areas**
- ISNW (ALL YEAR)**
- SSMW (ALL YEAR)**
- SSMW, 30 MPH IN MARKED CHANNEL**

Map by Haden Macbeth - Boating and Waterways

0 0.225 0.45 0.9 Miles

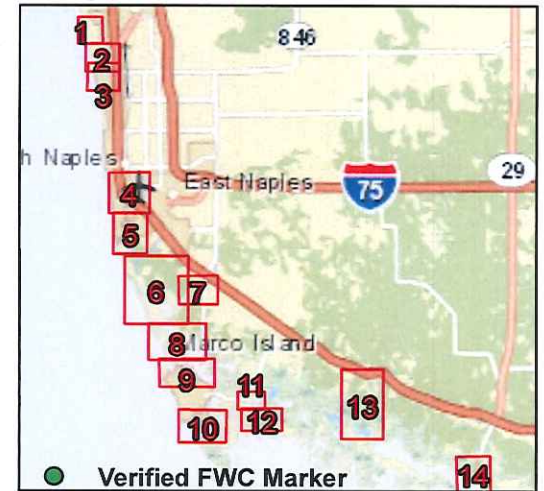
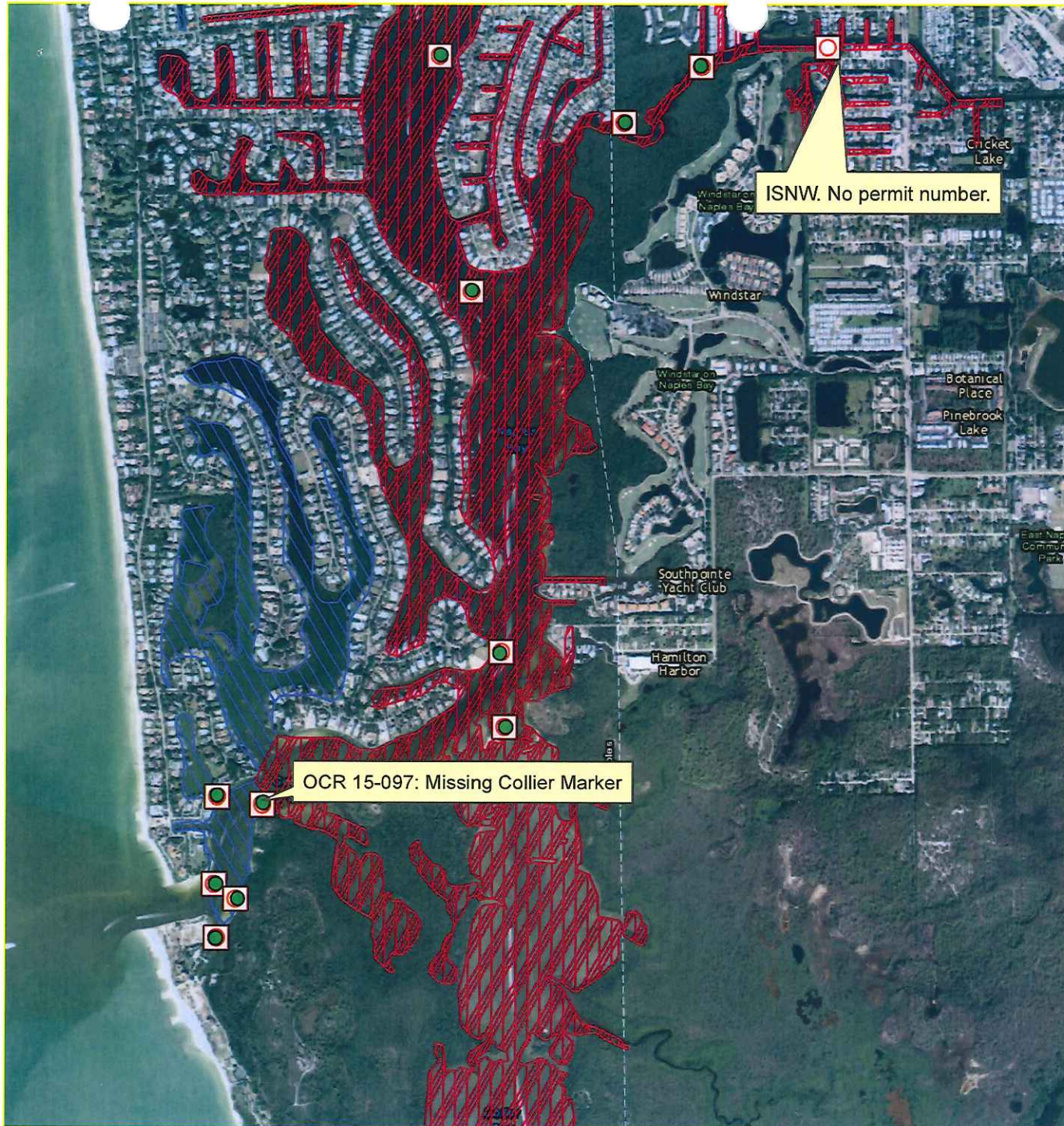


The boundaries depicted on this map document are approximate. This map document is intended for use only at the published scale. These data are intended for informational use only and should not be considered authoritative for navigation, engineering, legal, or other site-specific purpose. FWC does not assume any legal liability or responsibility arising from the use of this product in a manner not intended by the author.



# Naples Bay/ Gordon Pass Map 5

Date: 10/27/2015



**MARKER INVENTORY**

### State Manatee Protection Areas

ISNW (ALL YEAR)

SSMW, 30 MPH IN MARKED CHANNEL

Map by Haden Macbeth - Boating and Waterways

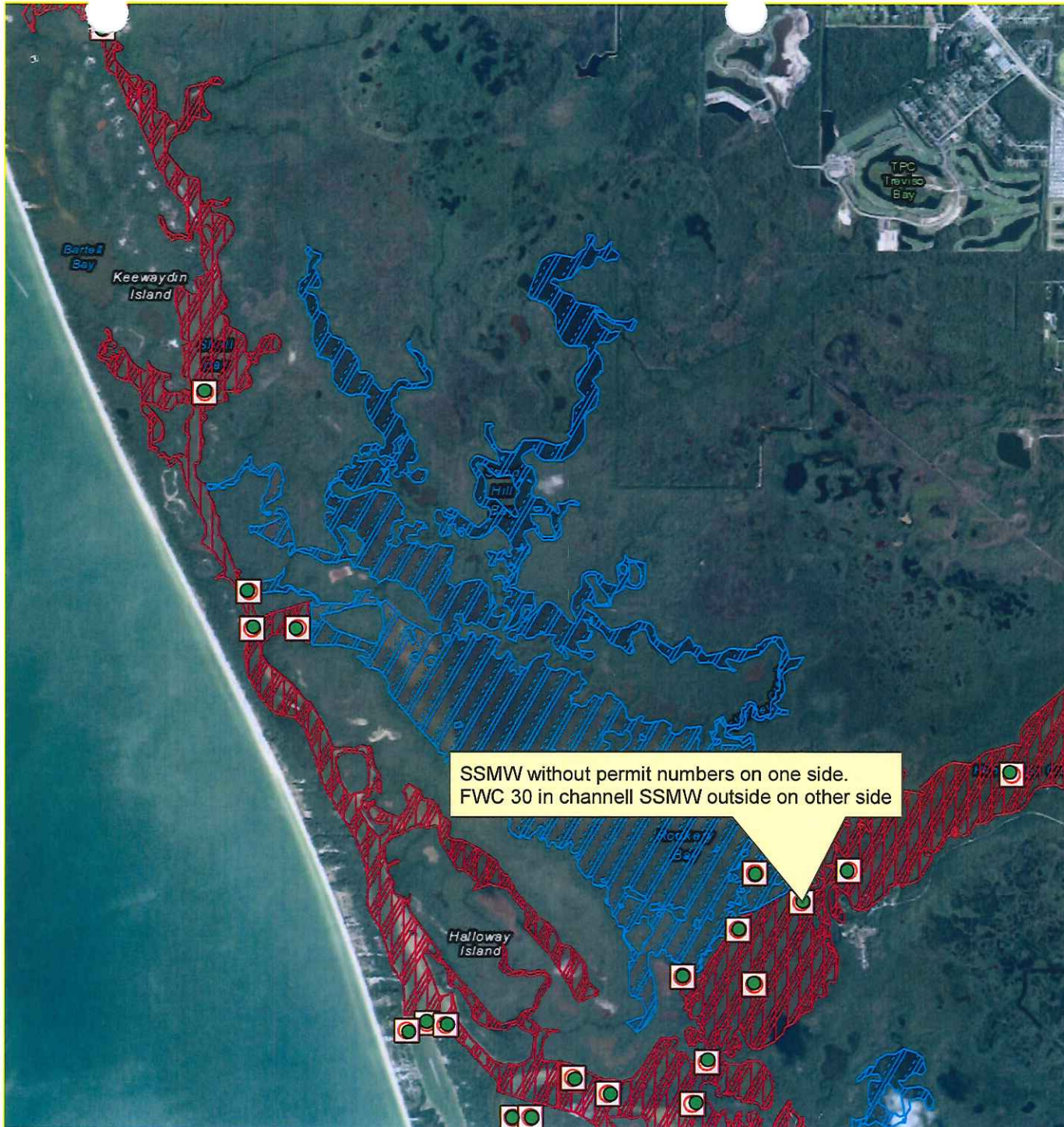
0 0.225 0.45 0.9 Miles

The boundaries depicted on this map document are approximate. This map document is intended for use only at the published scale. These data are intended for informational use only and should not be considered authoritative for navigation, engineering, legal, or other site-specific purpose. FWC does not assume any legal liability or responsibility arising from the use of this product in a manner not intended by the author.



# Rookery Bay Map 6

Date: 10/27/2015



**MARKER INVENTORY**

### State Manatee Protection Areas

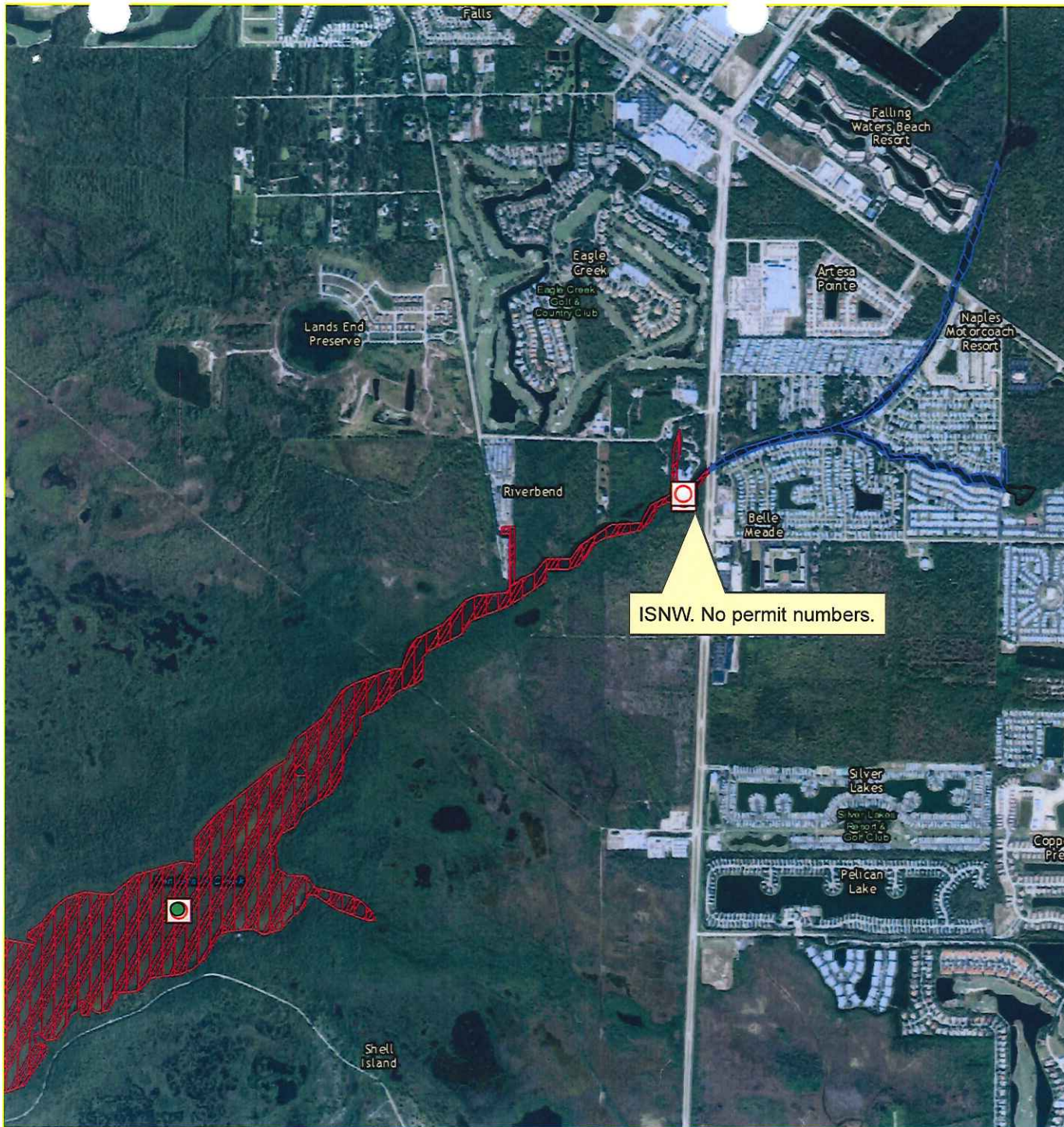
- 20 MPH, 30 MPH IN MARKED CHANNEL
- SSMW (ALL YEAR)
- SSMW, 30 MPH IN MARKED CHANNEL

Map by Haden Macbeth - Boating and Waterways

0 0.375 0.75 1.5 Miles

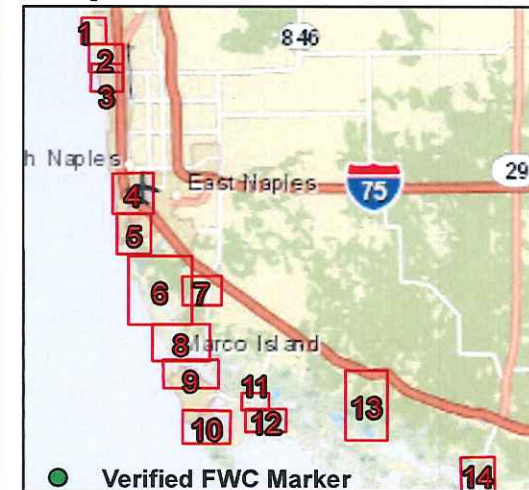
The boundaries depicted on this map document are approximate. This map document is intended for use only at the published scale. These data are intended for informational use only and should not be considered authoritative for navigation, engineering, legal, or other site-specific purpose. FWC does not assume any legal liability or responsibility arising from the use of this product in a manner not intended by the author.





# Henderson Cree Map 7

Date: 10/27/2015



300' <sup>50'</sup> → East  
under the Road IDIC

**MARKER INVENTORY**

## State Manatee Protection Areas

- ISNW (ALL YEAR)
- NO ENTRY (ALL YEAR)
- SSMW, 30 MPH IN MARKED CHANNEL

west bound side OK

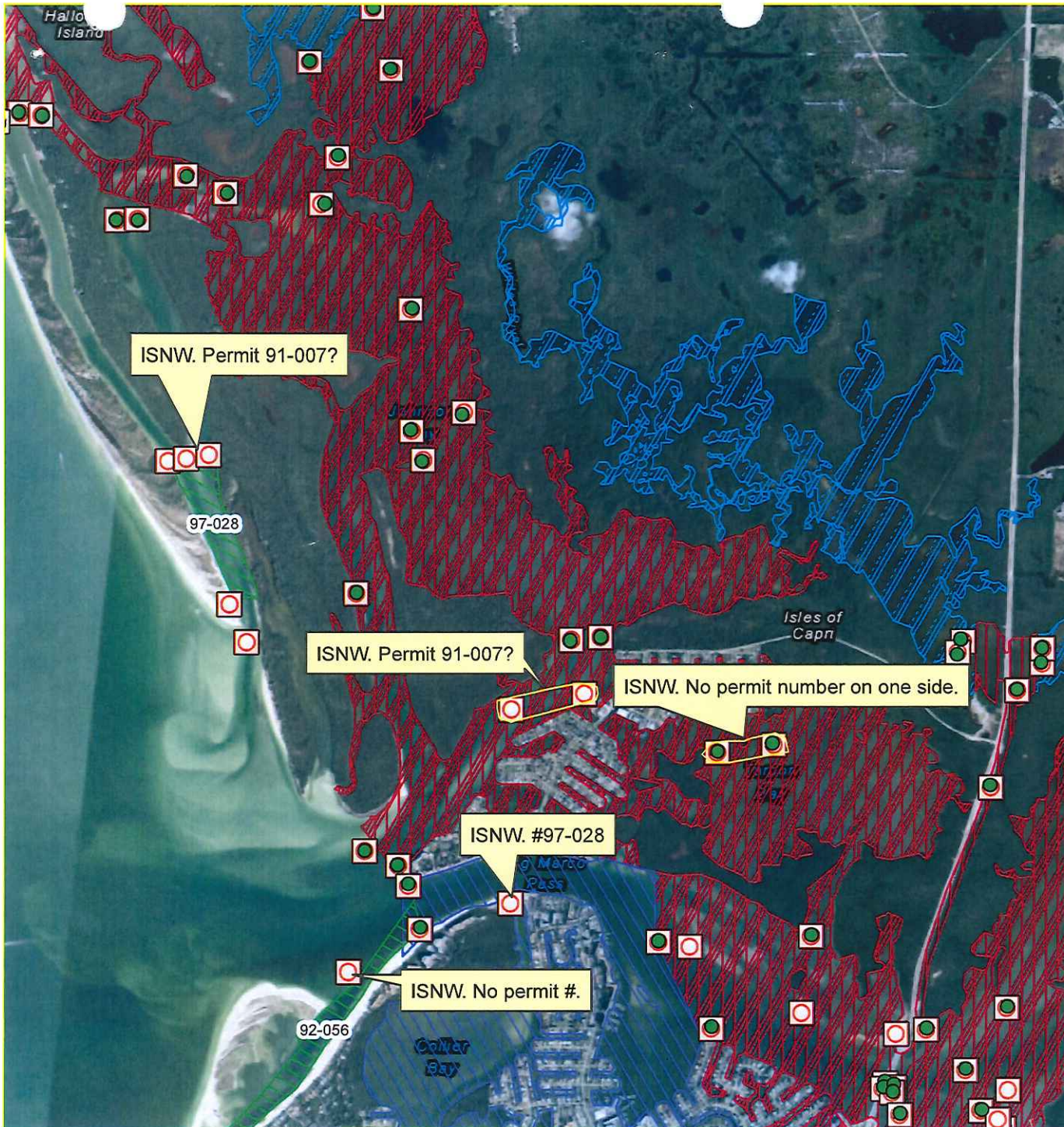
Map by Haden Macbeth - Boating and Waterways

0 0.225 0.45 0.9 Miles

The boundaries depicted on this map document are approximate. This map document is intended for use only at the published scale. These data are intended for informational use only and should not be considered authoritative for navigation, engineering, legal, or other site-specific purpose. FWC does not assume any legal liability or responsibility arising from the use of this product in a manner not intended by the author.

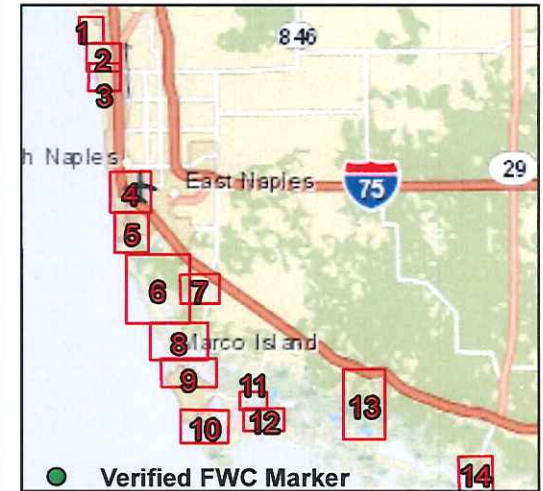








Verify signs at floating docks  
to the sign at monument point where w/in 500ft of  
turns down seaward \* extend Idle zone from Road  
to the Bridge.



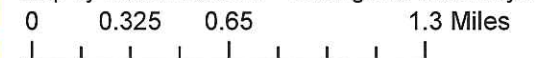
# Isle of Capri Map 8

Date: 10/27/2015



-  **MARKER INVENTORY**
-  **LOCAL ZONES**
- State Manatee Protection Areas**
-  20 MPH, 30 MPH IN MARKED CHANNEL
-  ISNW (ALL YEAR)
-  SSMW (ALL YEAR)
-  SSMW, 30 MPH IN MARKED CHANNEL

Map by Haden Macbeth - Boating and Waterways



The boundaries depicted on this map document are approximate. This map document is intended for use only at the published scale. These data are intended for informational use only and should not be considered authoritative for navigation, engineering, legal, or other site-specific purpose. FWC does not assume any legal liability or responsibility arising from the use of this product in a manner not intended by the author.

