

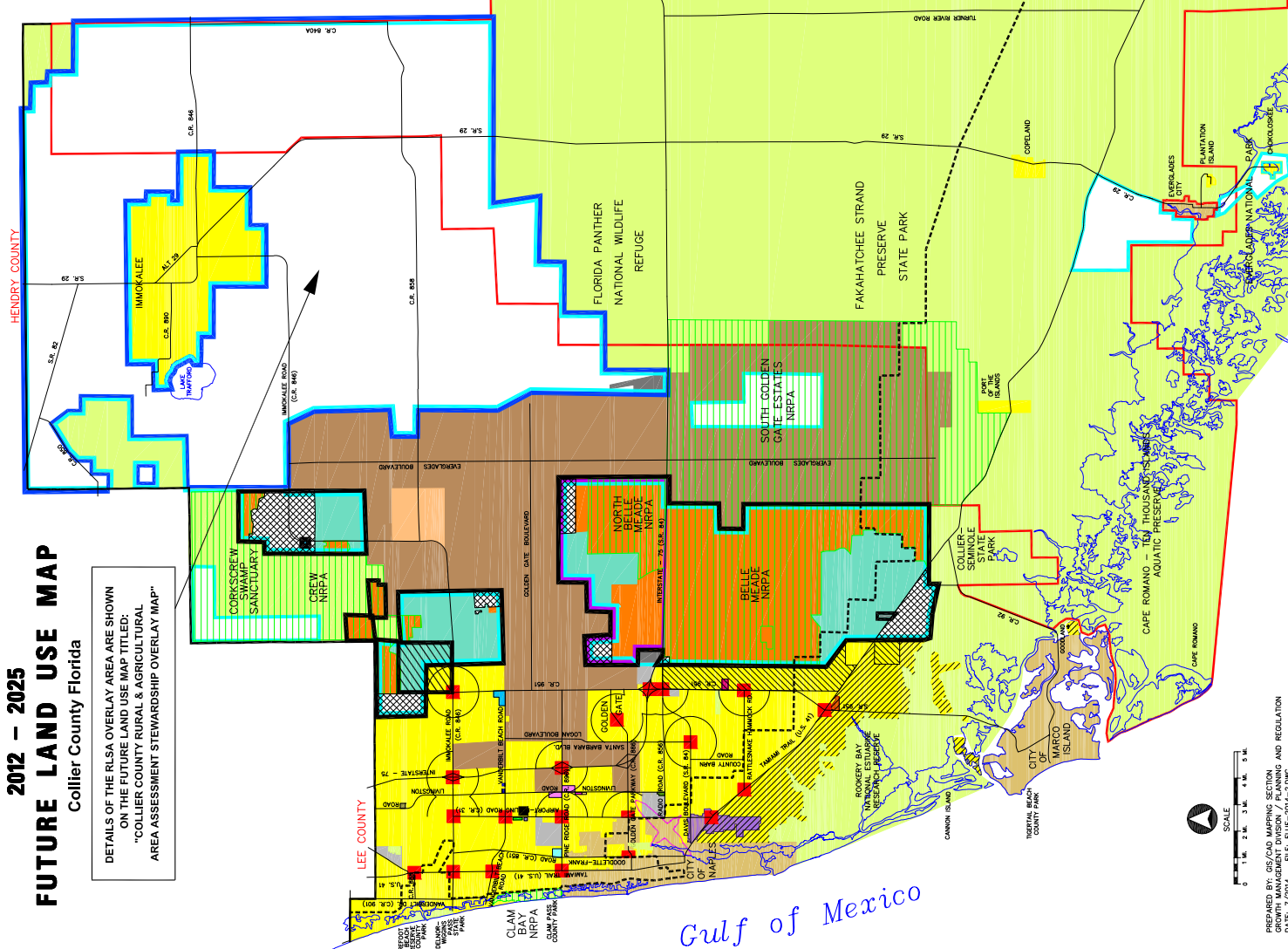
2012 - 2025 FUTURE LAND USE MAP Collier County Florida

DETAILS OF THE RLSA OVERLAY AREA ARE SHOWN ON THE FUTURE LAND USE MAP TITLED: "COLLIER COUNTY RURAL & AGRICULTURAL AREA ASSESSMENT STEWARDSHIP OVERLAY MAP"

URBAN DESIGNATION MIXED USE DISTRICT	COMMERCIAL DISTRICT	AGRICULTURAL / RURAL DESIGNATION	RESIDUAL LANDS
<ul style="list-style-type: none"> RESIDENTIAL DENSITY BANDS URBAN COASTAL FRINGE SUBDISTRICT URBAN RESIDENTIAL FRINGE SUBDISTRICT BUSINESS PARK SUBDISTRICT OFFICE AND IN-CELL COMMERCIAL SUBDISTRICT URBAN CENTER SUBDISTRICT RESIDENTIAL MIXED USE SUBDISTRICT ORANGE BLVD SUBDISTRICT MIXED USE SUBDISTRICT HENDERSON GREEK SUBDISTRICT COMMERCIAL SUBDISTRICT RESEARCH AND TECHNOLOGY PARK SUBDISTRICT BUCKLEY MIXED USE SUBDISTRICT COMMERCIAL MIXED USE SUBDISTRICT COMMERCIAL MEDIUM DENSITY SUBDISTRICT VANDERBILT BEACH ROAD SUBDISTRICT COLLIER BOULEVARD COMMUNITY FACILITY SUBDISTRICT INDUSTRIAL DISTRICT BUSINESS PARK SUBDISTRICT RESEARCH AND TECHNOLOGY PARK SUBDISTRICT 	<ul style="list-style-type: none"> MIXED USE INTERCHANGE ACTIVITY CENTER SUBDISTRICT LIVINGSTON / PINE RIDGE COMMERCIAL IN-CELL SUBDISTRICT BUSINESS PARK SUBDISTRICT RESEARCH AND TECHNOLOGY PARK SUBDISTRICT LIVINGSTON ROAD / SATONWOOD LANE COMMERCIAL IN-CELL SUBDISTRICT COMMERCIAL MIXED USE SUBDISTRICT COMMERCIAL IN-CELL SUBDISTRICT LIVINGSTON ROAD / VETERAN'S MEMORIAL BLVD. COMMERCIAL IN-CELL SUBDISTRICT ORANGE BLOSSOM AIRPORT CROSSROADS COMMERCIAL SUBDISTRICT 	<ul style="list-style-type: none"> AGRICULTURAL / RURAL DESIGNATION RURAL COMMERCIAL SUBDISTRICT COMMERCIAL ISLAND NEIGHBORHOOD COMMERCIAL SUBDISTRICT WATERFRONT SUBDISTRICT RECREATING LANDS SENDING LANDS NEUTRAL LANDS 	<ul style="list-style-type: none"> RECEIVING LANDS SENDING LANDS NEUTRAL LANDS

NOTE 1:

- (1) THIS MAP CAN NOT BE INTERPRETED WITHOUT THE GOALS, OBJECTIVES AND POLICIES OF THE COLLIER COUNTY GROWTH MANAGEMENT PLAN.
- (2) THE FUTURE LAND USE MAP INCLUDES NUMEROUS MAPS IN ADDITION TO THIS COUNTYWIDE FUTURE LAND USE MAP.
- (3) MOST SUBDISTRICTS AS SHOWN MAY NOT BE TO SCALE.
- (4) THE CONSERVATION DESIGNATION IS SUBJECT TO CHANGE AS AREAS ARE ACQUIRED AND MAY INCLUDE OUTPARCELS.
- (5) REFER TO THE COLLIER GATE AREA MASTER PLAN AND THE IMMOKALEE AREA MASTER PLAN FOR FUTURE LAND USE MAPS OF THOSE COMMUNITIES.



T 48 S	T 47 S	T 48 S	T 49 S	T 50 S	T 51 S	T 52 S	T 53 S	
R 25 E	R 26 E	R 27 E	R 28 E	R 29 E	R 30 E	R 31 E	R 32 E	
R 33 E	R 34 E							R 34 E

PREPARED BY: GIS/CAD MAPPING SECTION
 WITH MANAGEMENT DIVISION PLANNING AND REGULATION
 DATE: 7/2014 FILE: FUS-2014-0004

FUTURE LAND USE MAP	
ADOPTED	- JANUARY, 1989
AMENDED	- JANUARY, 1990
AMENDED	- FEBRUARY, 1991
AMENDED	- MAY, 1992
AMENDED	- MAY, 1993
AMENDED	- APRIL, 1994
AMENDED	- OCTOBER, 1997
AMENDED	- JANUARY, 1998
AMENDED	- FEBRUARY, 2000
AMENDED	- MAY, 2000
AMENDED	- MARCH, 2001
AMENDED	- MAY 14, 2002
AMENDED	- JUNE 10, 2002
AMENDED	- OCTOBER 22, 2002
AMENDED	- FEBRUARY 11, 2003
AMENDED	- SEPTEMBER 9, 2003
AMENDED	- SEPTEMBER 10, 2003
AMENDED	- DECEMBER 16, 2003
AMENDED	- OCTOBER 26, 2004
AMENDED	- OCTOBER 26, 2004
AMENDED	- JANUARY 25, 2007
AMENDED	- DECEMBER 4, 2007
AMENDED	- OCTOBER 14, 2008
AMENDED	- SEPTEMBER 13, 2011
AMENDED	- SEPTEMBER 13, 2011
AMENDED	- JANUARY 8, 2013
AMENDED	- MAY 20, 2013
AMENDED	- JUNE 13, 2014
AMENDED	- JUNE 13, 2014

LEE COUNTY
 HENDRY COUNTY
 BROWARD COUNTY
 MONROE COUNTY
 DADE COUNTY