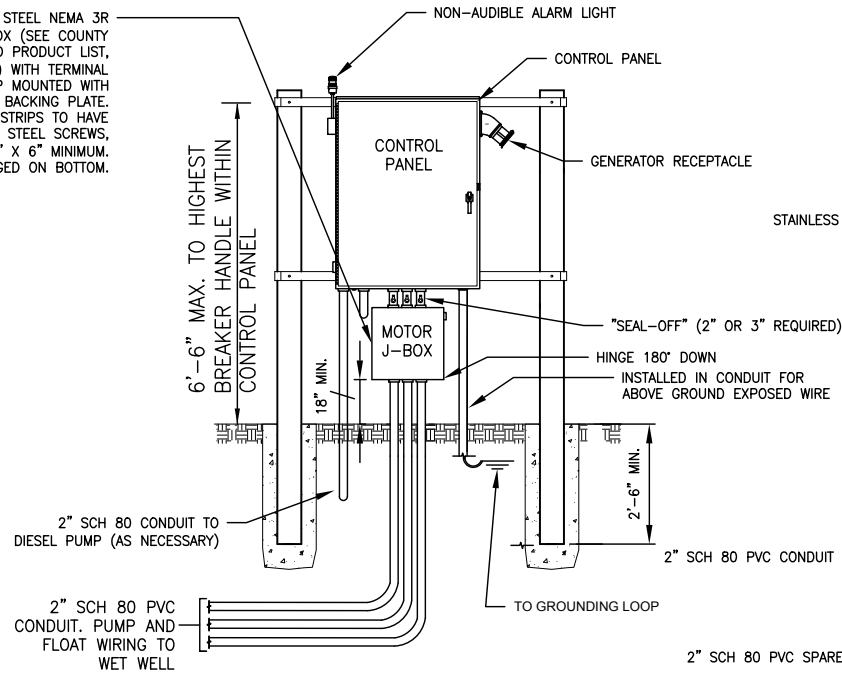


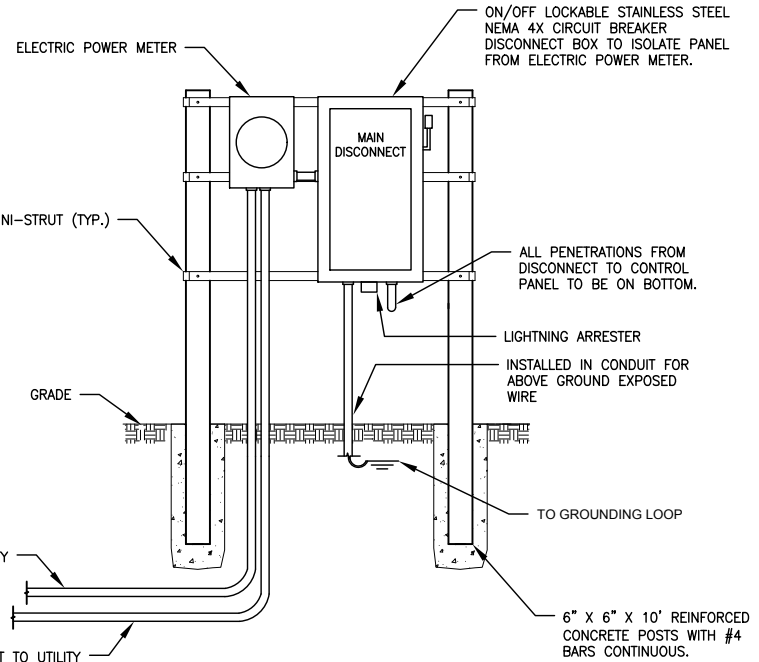
STAINLESS STEEL NEMA 3R JUNCTION BOX (SEE COUNTY APPROVED PRODUCT LIST, APPENDIX F) WITH TERMINAL STRIP MOUNTED WITH ALUMINUM BACKING PLATE. TERMINAL STRIPS TO HAVE STAINLESS STEEL SCREWS, 10" X 12" X 6" MINIMUM. HINGED ON BOTTOM.



FRONT

PUMP STATION CONTROL PANEL DETAIL - FRONT ELEVATION

SCALE: 1" = 4'-0"

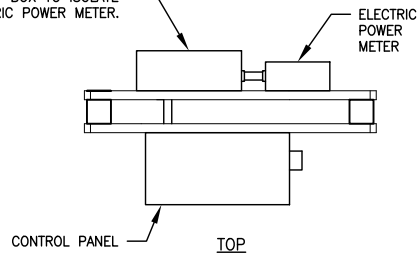


BACK

PUMP STATION CONTROL PANEL DETAIL - BACK ELEVATION

SCALE: 1" = 4'-0"

ON/OFF LOCKABLE STAINLESS STEEL NEMA 4X CIRCUIT BREAKER DISCONNECT BOX TO ISOLATE PANEL FROM ELECTRIC POWER METER.



TOP

PUMP STATION CONTROL PANEL DETAIL - PLAN VIEW

SCALE: 1" = 4'-0"

NOTES:

- #10 STRAND MINIMUM FROM CONTROL PANEL TO J-BOX.
- LIGHTNING ARRESTER (SEE COUNTY APPROVED PRODUCT LIST, APPENDIX F) MUST BE INSTALLED EXTERNALLY ON LOAD SIDE OF DISCONNECT BETWEEN DISCONNECT AND MAIN BREAKER. THE PENETRATION THROUGH THE DISCONNECT MUST BE MADE BELOW THE WORKING MECHANISM OF THE DISCONNECT.
- PUMP CONTROL PANEL (SEE COUNTY APPROVED PRODUCT LIST, APPENDIX F) WITH ALL COMPONENTS FOR OPERATING TWO PUMPS AND LIQUID LEVEL REGULATORS; GENERATOR RECEPTACLE AND ANGLE ADAPTER (SEE COUNTY APPROVED PRODUCT LIST, APPENDIX F) AND NEMA 4X STAINLESS STEEL ENCLOSURE.
- SEE DETAIL WW-17 FOR ANTENNA MOUNT DETAIL.
- GROUND WIRE FROM SERVICE SHALL BE INSTALLED IN SCH 80 PVC CONDUIT.
- ALL CONDUIT SHALL BE SCH 80 PVC

PUMP STATION CONTROL PANEL DETAIL

REVISION DATE:
JAN. 2015



SHEET NO.
WW-9