

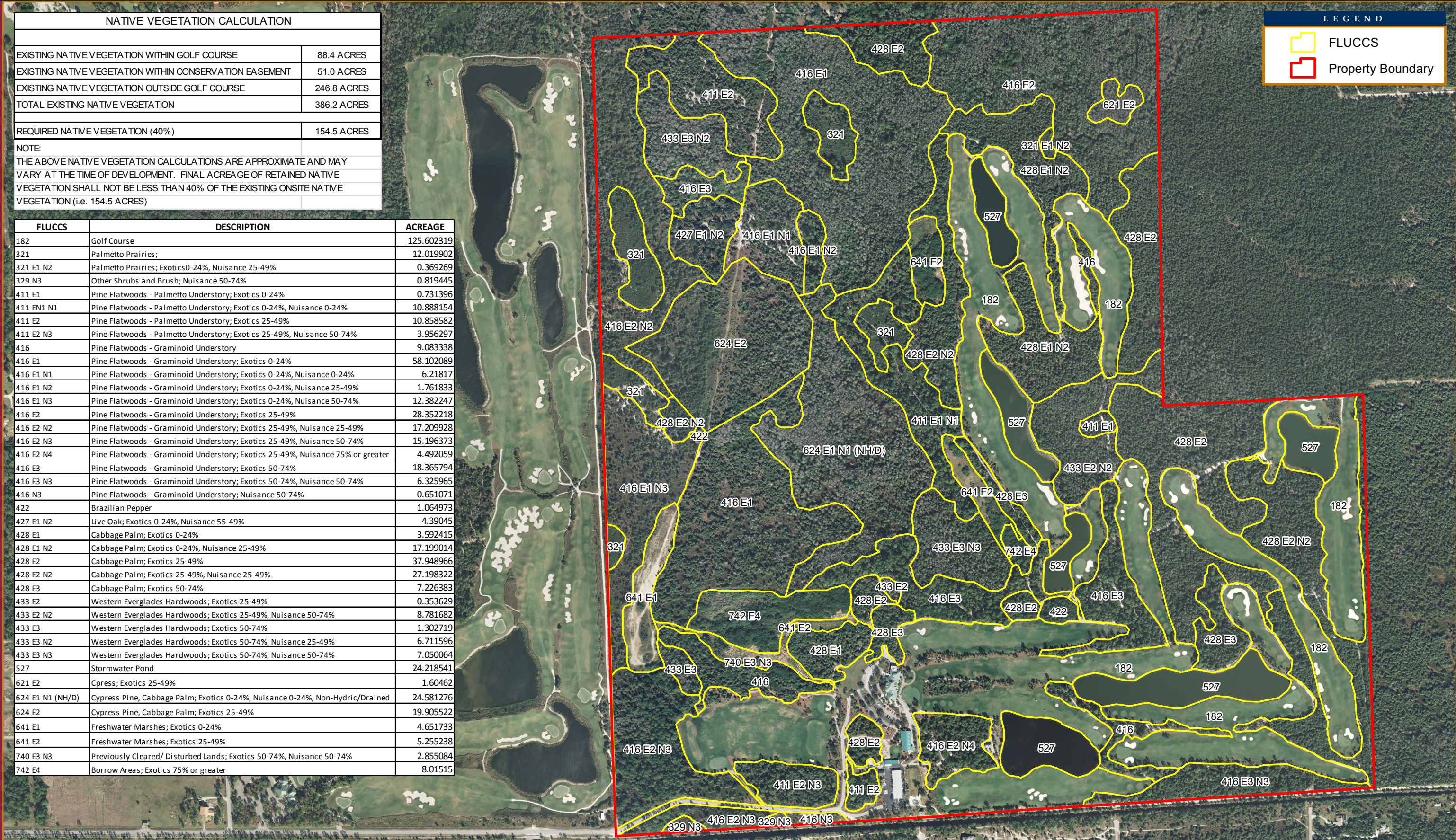
NATIVE VEGETATION CALCULATION	
EXISTING NATIVE VEGETATION WITHIN GOLF COURSE	88.4 ACRES
EXISTING NATIVE VEGETATION WITHIN CONSERVATION EASEMENT	51.0 ACRES
EXISTING NATIVE VEGETATION OUTSIDE GOLF COURSE	246.8 ACRES
TOTAL EXISTING NATIVE VEGETATION	386.2 ACRES
REQUIRED NATIVE VEGETATION (40%)	154.5 ACRES
NOTE: THE ABOVE NATIVE VEGETATION CALCULATIONS ARE APPROXIMATE AND MAY VARY AT THE TIME OF DEVELOPMENT. FINAL ACREAGE OF RETAINED NATIVE VEGETATION SHALL NOT BE LESS THAN 40% OF THE EXISTING ONSITE NATIVE VEGETATION (i.e. 154.5 ACRES)	

FLUCCS	DESCRIPTION	ACREAGE
182	Golf Course	125.602319
321	Palmetto Prairies;	12.019902
321 E1 N2	Palmetto Prairies; Exotics 0-24%, Nuisance 25-49%	0.369269
329 N3	Other Shrubs and Brush; Nuisance 50-74%	0.819445
411 E1	Pine Flatwoods - Palmetto Understory; Exotics 0-24%	0.731396
411 EN1 N1	Pine Flatwoods - Palmetto Understory; Exotics 0-24%, Nuisance 0-24%	10.888154
411 E2	Pine Flatwoods - Palmetto Understory; Exotics 25-49%	10.858582
411 E2 N3	Pine Flatwoods - Palmetto Understory; Exotics 25-49%, Nuisance 50-74%	3.956297
416	Pine Flatwoods - Graminoid Understory	9.083338
416 E1	Pine Flatwoods - Graminoid Understory; Exotics 0-24%	58.102089
416 E1 N1	Pine Flatwoods - Graminoid Understory; Exotics 0-24%, Nuisance 0-24%	6.21817
416 E1 N2	Pine Flatwoods - Graminoid Understory; Exotics 0-24%, Nuisance 25-49%	1.761833
416 E1 N3	Pine Flatwoods - Graminoid Understory; Exotics 0-24%, Nuisance 50-74%	12.382247
416 E2	Pine Flatwoods - Graminoid Understory; Exotics 25-49%	28.352218
416 E2 N2	Pine Flatwoods - Graminoid Understory; Exotics 25-49%, Nuisance 25-49%	17.209928
416 E2 N3	Pine Flatwoods - Graminoid Understory; Exotics 25-49%, Nuisance 50-74%	15.196373
416 E2 N4	Pine Flatwoods - Graminoid Understory; Exotics 25-49%, Nuisance 75% or greater	4.492059
416 E3	Pine Flatwoods - Graminoid Understory; Exotics 50-74%	18.365794
416 E3 N3	Pine Flatwoods - Graminoid Understory; Exotics 50-74%, Nuisance 50-74%	6.325965
416 N3	Pine Flatwoods - Graminoid Understory; Nuisance 50-74%	0.651071
422	Brazilian Pepper	1.064973
427 E1 N2	Live Oak; Exotics 0-24%, Nuisance 55-49%	4.39045
428 E1	Cabbage Palm; Exotics 0-24%	3.592415
428 E1 N2	Cabbage Palm; Exotics 0-24%, Nuisance 25-49%	17.199014
428 E2	Cabbage Palm; Exotics 25-49%	37.948966
428 E2 N2	Cabbage Palm; Exotics 25-49%, Nuisance 25-49%	27.198322
428 E3	Cabbage Palm; Exotics 50-74%	7.226383
433 E2	Western Everglades Hardwoods; Exotics 25-49%	0.353629
433 E2 N2	Western Everglades Hardwoods; Exotics 25-49%, Nuisance 50-74%	8.781682
433 E3	Western Everglades Hardwoods; Exotics 50-74%	1.302719
433 E3 N2	Western Everglades Hardwoods; Exotics 50-74%, Nuisance 25-49%	6.711596
433 E3 N3	Western Everglades Hardwoods; Exotics 50-74%, Nuisance 50-74%	7.050064
527	Stormwater Pond	24.218541
621 E2	Cpress; Exotics 25-49%	1.60462
624 E1 N1 (NH/D)	Cypress Pine, Cabbage Palm; Exotics 0-24%, Nuisance 0-24%, Non-Hydric/Drained	24.581276
624 E2	Cypress Pine, Cabbage Palm; Exotics 25-49%	19.905522
641 E1	Freshwater Marshes; Exotics 0-24%	4.651733
641 E2	Freshwater Marshes; Exotics 25-49%	5.255238
740 E3 N3	Previously Cleared/ Disturbed Lands; Exotics 50-74%, Nuisance 50-74%	2.855084
742 E4	Borrow Areas; Exotics 75% or greater	8.01515

LEGEND

 FLUCCS

 Property Boundary



Stantec Consulting Services Inc.
3200 Bailey Lane Suite 200
Naples, FL 34105
tel 239.649.4040
fax 239.263.6446

RECENT AERIAL WITH FLUCCS AND NATIVE HABITAT ACREAGE

EXHIBIT E
FEBURARY 2013

One Team. Infinite Solutions.

N 0 500 1,000

The information on this map has been compiled by Stantec staff from a variety of sources and is subject to change without notice. Stantec makes no representations or warranties, express or implied, as to accuracy, completeness, timeliness, or rights to the use of such information.

V:\2156\active\215611377\gis\mxd\11377_OFGC_FLUCCS_20130220_v01.mxd | Saved: 2/21/2013 5:03:35 PM