

# *McGee & Associates*

**Landscape Architecture**

**Project:** GOLDEN GATE BEAUTIFICATION, M.S.T.U.  
**Project Manager:** Darryl Richards, r.l.a., C.C.P.S.D. – A.T.M. Dept.  
**Consultant:** McGee & Associates  
**Contractor:** Hannula Landscaping & Irrigation Inc.

**Location:** Golden Gate Pkwy.  
**Consultant's Representative:** Michael A. McGee, rla, isa  
**Contractor's Representative:** Jeremy and Dale Hannula

**Report Period:** FY 13-14 October 2013  
**Report No.:** One – FY 13-14

**S** - Indicates items to be addressed by staff.

**C** - Indicates items to be addressed by Contractor

This report is prepared strictly to provide recommendations only and in no manner is to imply any authorization to the Contractor or its Sub-Contractors to perform services for Collier County. Contractor is requested to address items as soon as possible and indicate in **RESPONSE/COMMENTS** column when and which items are corrected.

Please return electronic copy to our office prior to next month's MSTU site review and meeting.

**Note:** Copy picture out of comment boxes and then paste to additional sheet if picture is desired in larger size.

<u>LOCATION/WORK AREA</u>	<u>S</u>	<u>C</u>	<u>R</u>	<u>MAINTENANCE SERVICES OBSERVATIONS &amp; RECOMMENDATIONS</u>	<u>RESPONSE or COMMENTS</u>
Observation dates: 10/08-10/13				<b>MONTHLY ADDRESSED</b>	
<b>Median #1</b>		X		Review Plumbago for insects, Plants have defoliated and contain weeds on east end.	
		X	3	Remove declining and/or dead crown of thorn on east end of median.	Hannula; 9-5-13 Completed, M&A: 9-12-13 Please review again not all plants removed.
		X	2	Remove tree sprouts within Indian hawthorn shrubs. Also remove weeds and Palm seedlings. Remove dead Indian hawthorn plants.	Hannula; 9-5-13 Completed, M&A: 9-12-13 Please review again not all plants removed.
		X	4	Pavers need to be cleaned to remove stains and gum.	
		X	4	Auto accident occurred on east end north side and damaged crown of thorn. Remove dead and damaged and replant.	(22) COTs removed. Hannula 7/16/13: County postponed replacements until Oct. 2013. M&A: 9-12-13 Provide proposal to staff for replacements.
		X	7	Plumbago bed needs to have replacements. Also review for insects and treat as needed.	Hannula 7/16/13: County postponed replacements until Oct. 2013., M&A: 9-12-13 Provide proposal to staff for replacements.
<b>Median #2</b>		X	2	Remove Oak tree sprouts and weeds in Juniper on both the east and west ends.	
<b>Median #2A – Pavers only</b>		X	11	Number median 2A	Hannula 7/16/13: County postponed replacements until Oct. 2013., M&A: 9-12-13 Provide proposal to staff for painting.
<b>Median #3</b>		X	4	Plumbago bed needs to have replacements. Provide count and replace with min. 3 gal. size plants.	County postponed replacements until Oct. 2013., M&A: 9-12-13 Provide proposal to staff for replacements.
<b>Median #4</b>		X		Broadleaf weed treatment of the turf is needed. Continue treatments on a monthly basis for the next three months.	
		X		At the Sewer Lift Station: The Sabal replacement palm has died and needs to be replaced.	
		X		Strip of turf on north side of lift station was not mowed during last service.	

**Design \* Environmental Management \* Planning \* Arborist**

5079 Tamiami Trail East / P. O. Box 8052 Naples, Florida 34101  
 Phone (239) 417-0707 \* Fax (239) 417-0708  
 LC 098 \* FL 1023A

# *McGee & Associates*

Landscape Architecture

**GOLDEN GATE BEAUTIFICATION, M.S.T.U.**

**Location: Golden Gate Pkwy.**

**Report Period: FY 13-14, October 2013**

**Report No.: One**

LOCATION/WORK AREA	S	C	R	MAINTENANCE SERVICES OBSERVATIONS & RECOMMENDATIONS	RESPONSE or COMMENTS
		X		East end bed: Continue to remove and treat Torpedo grass in Iris plants.	
		X		4 <sup>th</sup> bed from east end: Continue to remove Torpedo grass in Iris plants.	
		X		2 <sup>nd</sup> bed from east end: Continue to remove Torpedo grass in Iris plants.	Hannula; 9-5-13 Completed, M&A: 9-12-13 review and hand pull Torpedo grass and then cutback and treat with herbicide.
		X	5	Liriope on the west end contains Torpedo grass. Treat as needed. Also remove Oak tree sprouts in Liriope.	<b><u>M&amp;A: The current over the top herbicide treatments to date has not resolved the Torpedo grass weed issue. Our first recommendation is to perform a rejuvenation pruning or cutback of the plants and then perform over the top herbicide treatments for a continuous 90 day period. The second alternative is to remove the existing plants, treat with a contact herbicide and then replant the areas. Minor infestation could be addressed with the first recommendation where heavy infested plants will need to be addressed with the second recommendation.</u></b> Hannula: 9-5-13 Completed on 8/14 and 8/29. M&A: 9-12-13 Torpedo grass still present. Hand pull, cutback plants if needed and retreat.
<b>Median #5</b>		X		Broadleaf weed treatment of the turf is needed. Continue treatments on a monthly basis for the next three months.	
		X	7	4 - Flax lily dead on east end. Replace with 1 gal. size.	Hannula 7/16/13: County postponed replacements until Oct. 2013., M&A: 9-12-13 Provide proposal to staff for replacements.
<b>Median #6</b>		X		Broadleaf weed treatment of the turf is needed. Continue treatments on a monthly basis for the next three months.	
		X	5	Liriope plants in the west end bed have Torpedo grass.	Hannula: 9-5-13 Completed on 8/14 and 8/29. M&A: 9-12-13 Torpedo grass still present. Hand pull, cutback plants if needed and retreat.
<b>Median #7</b> Pump Station- Median #7 east end, 15 hp , 8" well, VFD, Motorola Scorpio controller S3405-operates G.G. Pkwy. Medians 1-10		X		Broadleaf weed treatment of the turf is needed. Continue treatments on a monthly basis for the next three months.	
		X		East end bed: Continue to remove and treat Torpedo grass in Liriope plants.	
<b>Median #8</b>		X		East end: Hand remove weeds and vines in Juniper. Remove Palm tree sprouts and seedlings throughout media.	
		X	3	Provide count to fill in missing Liriope plants in middle area of median.	Hannula 7/16/13: County postponed replacements until Oct. 2013., M&A: 9-12-13 Provide proposal to staff for replacements.

# *McGee & Associates*

Landscape Architecture

**GOLDEN GATE BEAUTIFICATION, M.S.T.U.**

**Location: Golden Gate Pkwy.**

**Report Period: FY 13-14, October 2013**

**Report No.: One**

LOCATION/WORK AREA	S	C	R	MAINTENANCE SERVICES OBSERVATIONS & RECOMMENDATIONS	RESPONSE or COMMENTS
		X	9	Continue to remove and treat Torpedo grass in Iris plants.	Hannula: 9-5-13 Completed on 8/14 and 8/29., . M&A: 9-12-13 Torpedo grass still present. Hand pull, cutback plants if needed and retreat.
<b>Median #9</b>		X		Broadleaf weed treatment of the turf is needed. Continue treatments on a monthly basis for the next three months.	
		X	5	West end bed: The Juniper, Bougainvillea and Liriope plants all have Torpedo grass in them. Continue to remove and treat Torpedo grass in Iris plants.	Hannula: 9-5-13 Completed on 8/14 and 8/29., M&A: 9-12-13 Torpedo grass still present. Hand pull, cutback plants if needed and retreat.
		X	12	Damaged area has grown over with native grasses and weeds. Apparent auto damage to turf on west median end. Provide proposal for repair and replacement. (photo)	Hannula: 9-5-13 Completed on 8/14 and 8/29., M&A: 9-12-13 Provide proposal to staff to resod with St. Augustine.
<b>Median #10</b>		X		Broadleaf weed treatment of the turf is needed. Continue treatments on a monthly basis for the next three months.	
		X	5	West end bed: Juniper and Bougainvillea plants have Torpedo grass in them. Continue to remove and treat Torpedo grass in Iris plants.	Hannula: 9-5-13 Completed on 8/14 and 8/29., M&A: 9-12-13 Torpedo grass still present. Hand pull, cutback plants if needed and retreat.
		X	9	East end bed: Retreat African iris for torpedo grass. Continue to remove and treat Torpedo grass in Iris plants.	Hannula: 9-5-13 Completed on 8/14 and 8/29., M&A: 9-12-13 Torpedo grass still present. Hand pull, cutback plants if needed and retreat.
		X	9	Middle plant bed: Continue to treat African iris and Liriope for torpedo grass. Review Liriope in west end of bed. Continue to remove and treat Torpedo grass in Iris plants.	Hannula: 9-5-13 Completed on 8/14 and 8/29., M&A: 9-12-13 Torpedo grass still present. Hand pull, cutback plants if needed and retreat.
		X	11	West end turf area: Area has grown over with native grasses and weeds. Previously water stressed and/or chinch bug damage. Review irrigation coverage and treat as required. Remove dead turf and resod. (photo)	Hannula: 9-5-13 Completed on 8/14 and 8/29., M&A: 9-12-13 Provide proposal to staff to resod with St. Augustine.
<b>Median #11</b>		X		Broadleaf weed treatment of the turf is needed. Continue treatments on a monthly basis for the next three months.	
		X	2	West end bed: Cutback all Iris and remove weeds.	
		X	14	East end bed: Flax lily has Torpedo grass in them. Continue to remove and treat Torpedo grass in Iris plants.	Hannula: 9-5-13 Completed on 8/14 and 8/29., M&A: 9-12-13 Torpedo grass still present. Hand pull, cutback plants if needed and retreat.
		X	10	West end pavers: Treat with iron stain removal chemical and pressure wash.	Proposal to be submitted week of 1/14/13. Waiting on approval. M&A: 9-12-13 Update status of proposal.
		X	10	Middle turf area: Area has grown over with native grasses and weeds. Previously water stressed and/or chinch bug damage. Review irrigation coverage and treat as required. Remove dead turf and resod. (photo)	Hannula: 9-5-13 Irrigation adjustment completed. M&A: 9-12-13 Provide proposal to staff to resod with St. Augustine.

**Comment [s21]:**



**Comment [s22]:**



**Comment [s23]:**



# *McGee & Associates*

Landscape Architecture

**GOLDEN GATE BEAUTIFICATION, M.S.T.U.**

**Location: Golden Gate Pkwy.**

**Report Period: FY 13-14, October 2013**

**Report No.: One**

LOCATION/WORK AREA	S	C	R	MAINTENANCE SERVICES OBSERVATIONS & RECOMMENDATIONS	RESPONSE or COMMENTS
<b>Median #12</b> Pump Station- Median #12 west end, 15 hp , 8" well, VFD, Motorola Irrinet controller #34-operates G.G. Pkwy. Medians 11-18 & Hunter Blvd. & Coronado Pkwy.		X		Broadleaf weed treatment of the turf is needed. Continue treatments on a monthly basis for the next three months.	
		X	2	Remove weeds and Orchid sprouts in dwarf Jasmine bed.	
		X	2	2 <sup>nd</sup> bed from east end: Continue to treat Torpedo grass in cutback African Iris plants.	Hannula: 9-5-13 Completed on 8/14 and 8/29.
		X	7	Replace removed turf area due to past irrigation repair and remove brick debris. (photo)	Hannula 7/16/13: County postponed replacements until Oct. 2013., M&A: 9-12-13 Provide proposal to staff to resod with St. Augustine.
		X	9	East end pavers: Treat with iron stain removal chemical and pressure wash.	Hannula 7/16/13: County postponed replacements until Oct. 2013., M&A: 9-12-13 Provide proposal to staff to resod with St. Augustine.
		X	9	West end bed: Retreat Torpedo grass in African Iris. Big Rose Crown of thorn also has Torpedo grass.	Hannula: 9-5-13 Completed on 8/14 and 8/29., ., M&A: 9-12-13 Torpedo grass still present. Hand pull, cutback plants if needed and retreat. Do not cutback Big Rose hand pull and spray.
<b>Median #13</b>		X		Broadleaf weed treatment of the turf is needed. Continue treatments on a monthly basis for the next three months.	
		X	2	East end bed: Remove Asparagus fern and hand pull broadleaf weeds in plants.	
		X	2	Remove St. Augustine grass in Flax Lily in middle bed.	
		X	2	West end bed: remove broadleaf weeds in Iris plants.	
<b>Median #14</b>		X		Broadleaf weed treatment of the turf is needed. Continue treatments on a monthly basis for the next three months.	
		X		Schedule pruning of red Fountain grasses.	
		X		West end bed: Continue spray treatment for Torpedo grass	
<b>Median #15</b>		X		Broadleaf weed treatment of the turf is needed. Continue treatments on a monthly basis for the next three months.	
		X	7	East end bed: Review and retreat Torpedo grass in Liriope and Flax lily plants. Continue treatments on a monthly basis for the next three months.	Hannula: 9-5-13 Completed on 8/14 and 8/29., M&A: 9-12-13 Torpedo grass still present. Hand pull, cutback plants if needed and retreat.
		X	7	3 rd bed from east end: Review and retreat Torpedo grass in Liriope plants. Continue treatments on a monthly basis for the next three months.	Hannula: 9-5-13 Completed on 8/14 and 8/29., M&A: 9-12-13 Torpedo grass still present. Hand pull, cutback plants if needed and retreat.
<b>Median #16</b>		X		Broadleaf weed treatment of the turf is needed. Continue treatments on a monthly basis	



# *McGee & Associates*

Landscape Architecture

**GOLDEN GATE BEAUTIFICATION, M.S.T.U.**      **Location: Golden Gate Pkwy.**      **Report Period: FY 13-14, October 2013**      **Report No.: One**

LOCATION/WORK AREA	S	C	R	MAINTENANCE SERVICES OBSERVATIONS & RECOMMENDATIONS	RESPONSE or COMMENTS
				for the next three months.	
		X	5	East end bed: Treat Torpedo grass in Agapanthus plants. Continue treatments on a monthly basis for the next three months.	Hannula: 9-5-13 Completed on 8/14 and 8/29., M&A: 9-12-13 Torpedo grass still present. Hand pull, cutback plants if needed and retreat.
		X	8	West end bed: Retreat Torpedo grass in cutback African Iris plants. Continue treatments on a monthly basis for the next three months.	Completed on 8/14 and 8/29.
(Old Median #17 – East of canal)		X	3	4 <sup>th</sup> bed from east end: Expand Flax lily bed into area of removed plants. Remove all Indian hawthorn plants. (photo)	Hannula 7/16/13: County postponed replacements until Oct. 2013., M&A: 9-12-13 Provide proposal to staff for replacements.
Median #17 (Old #18 –West of canal)		X	2	Hand remove weeds in Juniper plants.	
		X	2	Install fertilizer spikes around Foxtail palm.	Provide proposal to install (6) Lutz Palm Tree Spikes #30193.
Median Not numbered (Old #19 – Paver only median)	X	X	13	Fix numbers to number median 19 or number as 17A.	Hannula 7/16/13: County postponed changes until Oct. 2013., M&A: 9-12-13 Provide proposal to staff for painting.
Median #18 (Old #20)		X		Broadleaf weed treatment of the turf is needed. Continue treatments on a monthly basis for the next three months.	
		X	8	East end bed: Area has grown over with native grasses and weeds. Review dead turf area on north side of median for replacement.	Hannula 7/16/13: County postponed replacements until Oct. 2013., M&A: 9-12-13 Provide proposal to staff to resod with St. Augustine.
Median #19 (Old #21, Sign) Pump Station- Median #19 (Old #21) east end bed, 7.5 hp , 6" well, VFD , Motorola Scorpio controller S3401- operates G.G. Pkwy. Medians 19-22.		X	2	West end bed: Hand remove weeds in Iris plants.	
Median #20 (Old #22)					
Irrigation General:					
				<b>QUARTERLY ADDRESSED</b>	
Median # 4, 5, 6, 7, 9, 10 thru 17, 19, & 20		X		St Augustine turf contains large and small amounts of broadleaf weeds in turf. As soon as weather conditions permit a spray program should begin to remove weeds.	
Median # 4 thru 19		X	6	It is recommended beginning in June to schedule a heavy pruning of all African Iris plants down to a six (6) height. At which time Torpedo grass treatments can be applied.	Hannula: 9-5-13 Completed on 8/14 and 8/29., M&A: 9-12-13 Not all beds completed.
Median # 1 thru 19	X	X	13	All medians are in need of mulch.	Hannula: 9-5-13 On schedule for Oct 2013., M&A: Provide schedule.
Median #9		X	3	3 <sup>rd</sup> bed from east end: Add 12- 3 gal. Fakahatchee grass in middle of bed.	Hannula 7/16/13: County postponed replacements until Oct. 2013., M&A: 9-12-13 Provide proposal to staff for replacements.
	X		22	The Mr. Farrow and Mr. Melchore memorial plaque and base need to be cleaned and	



*McGee & Associates*

Landscape Architecture

GOLDEN GATE BEAUTIFICATION, M.S.T.U.

Location: Golden Gate Pkwy.

Report Period: FY 13-14, October 2013

Report No.: One

LOCATION/WORK AREA	S	C	R	MAINTENANCE SERVICES OBSERVATIONS & RECOMMENDATIONS	RESPONSE or COMMENTS
				base repainted. (photo)	
Median #10	X	X	9	Middle plant bed: Remove Bottlebrush tree just east of Mahogany tree listed below.	Removal on schedule to completed by 9/15/13., M&A: Provide schedule.
	X	X	22	Middle plant bed: Mahogany tree based upon previous storm damage would be considered hazardous and needs to be removed. Remove and grind stump to planting level. Install an 8' x 8', multi-stem Ligustrum tree. Remove existing Liriope and plant with Flax lily to Iris. (photo)	Hannula 7/16/13: County postponed replacements until Oct. 2013., Removal on schedule to completed by 9/15/13., M&A: Provide schedule.
Median #15		X		2 <sup>nd</sup> bed from west end: Remove declining Variegated Pittisporum and Indian hawthorn shrubs and replant area with Blueberry Flax Lily. 60 – 1 gal. plants will be needed to expand westward from existing Flax lily bed.	Hannula 7/16/13: County postponed replacements until Oct. 2013., Removal on schedule to completed by 9/15/13., M&A: Provide schedule.

Comment [mam6]:



Comment [mam7]:



*McGee & Associates*

Landscape Architecture

GOLDEN GATE BEAUTIFICATION, M.S.T.U.

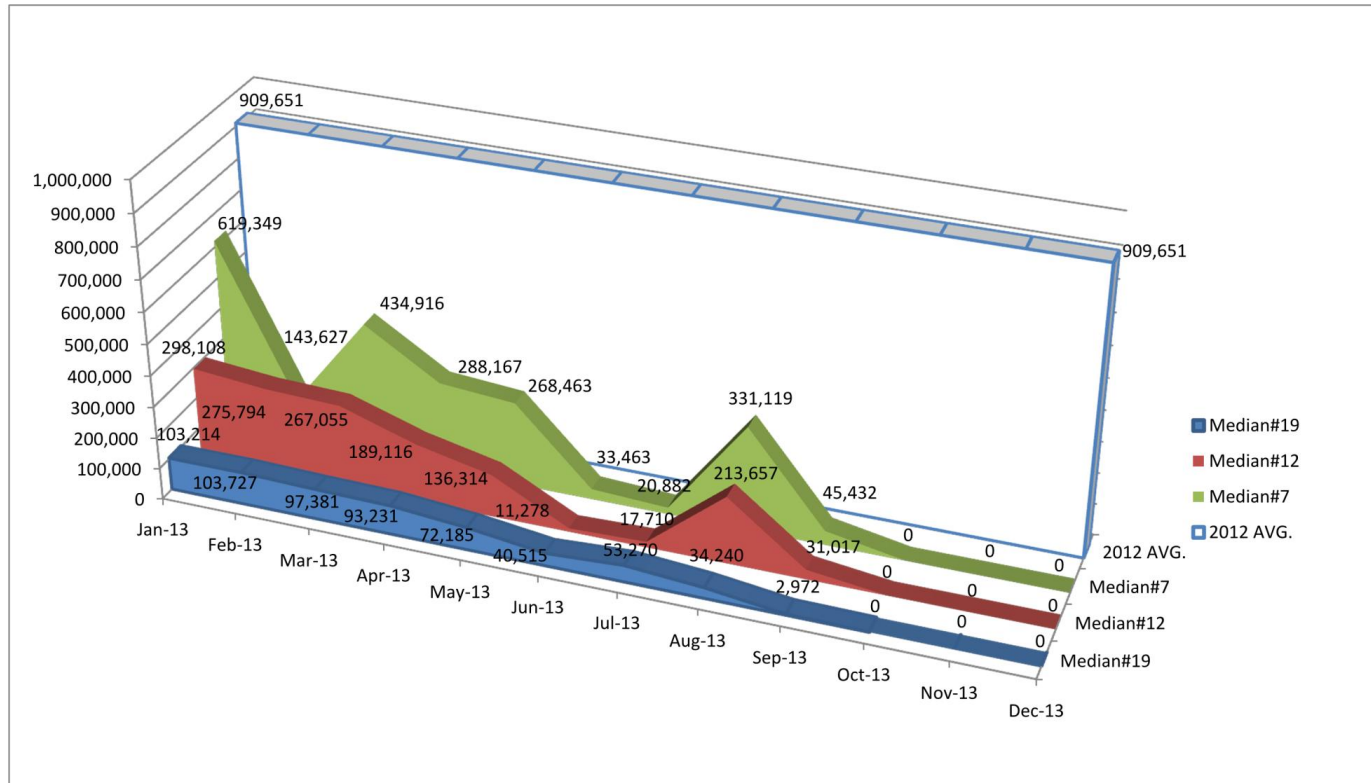
Location: Golden Gate Pkwy.

Report Period: FY 13-14, October 2013

Report No.: One

LOCATION/WORK AREA	S	C	R	MAINTENANCE SERVICES OBSERVATIONS & RECOMMENDATIONS	RESPONSE or COMMENTS
--------------------	---	---	---	---	----------------------

GG MSTU Golden Gate Parkway Median #7-12-19, Well Annual Water Use for 2013



**Water Use Goal:**

(5.73 ac. of Plants & Turf)

Recommended: Supplemental watering rate of .75 to 1 inch per week. One inch per week equals 155,594 gallons per week or 622,376 gallons per month.

2012 total water use: 10,915,815 gallons or 70.16 inches of supplemental water pumped.

10/01/2013