

Beach Renourishment Update Meeting
October 11, 2013
Agenda

1. Introduction

- Taping Meeting
 - CD's available (call 252-8383 Janet Curran)
 - Audio Posted on Website
- Speak into microphone
- Open to the public for information only
- Identify yourself before speaking
- Every Friday at 1:00pm unless otherwise notified.

2. Collier County Update

- FDEP Permit
- Administrative appeal No. 13 – granted administrative hearing. Pelican Bay Quantities
- FDEP NTP to Collier County
- Contractor NTP
- Hauling Start dates
- Truck Haul routes
- Information exchange to press/public
- Chain of Approvals.

3. Engineering – Steve Keehn

- Revised Template
- Sampling procedures at mine
- Inspections and sampling at unloading sites
- Survey status

4. Eastman Update

- Submittals
- Setup progress
- Survey status
- Set up and staging location
- Renourishment location and start/direction of fill
- Progress through 10/21
- Inspection of vehicles
- Off duty police
- Hours of mine load-out operation
- Turbidity monitoring
- Videotaping routes

- Daily Reports
- Site supervision
- Staging area
- Key milestone dates; LaPlaya and Ritz
- ATV and safety
- Haul trucker dismissed

5. Phillips and Jordan

- Submittals
- Setup progress
- Survey status
- Set up and staging location
- Renourishment location and start/direction of fill
- Progress through 10/21
- Inspection of vehicles
- Off duty police
- Hours of mine load-out operation
- Turbidity monitoring
- Videotaping routes
- Daily Reports
- Site supervision
- Staging area
- Key milestone dates; LaPlaya and Ritz
- ATV and safety
- Haul trucker dismissed

6. QA/QC – Atkins Engineering

- Load tracker software/system
- Daily reports

7. Naples Police/Collier County Sheriff

- Comments

8. Communication/P.O. – Connie Dean/Gail Hambright

- Website
- Hotline
- Media contacts

9. City of Naples

- Comments

10. Other

- Shorebird Monitoring

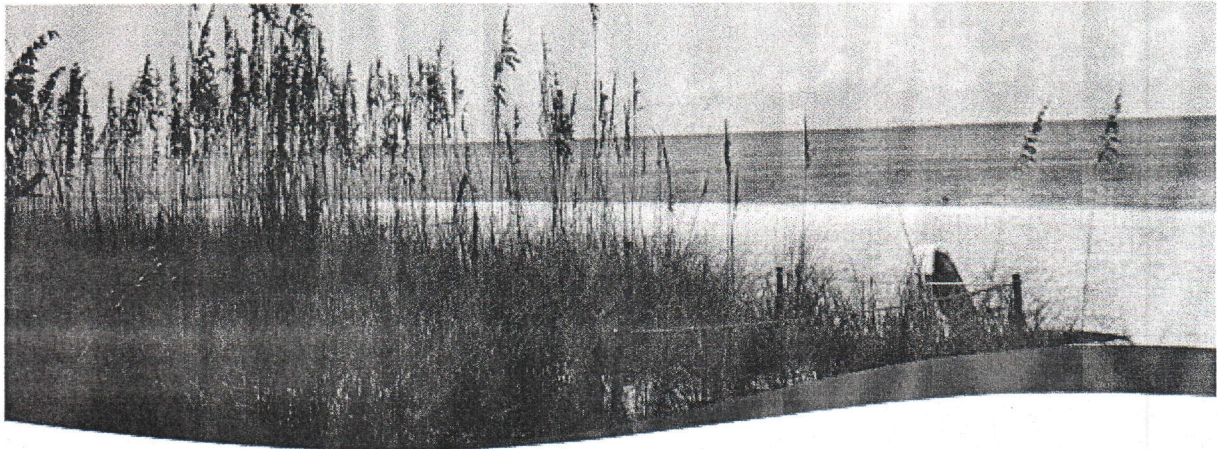
10/10/13 Redistributed Volumes for Approval

| | Profile Number | Effective Distance (ft) | Revised Based on 2013 Survey and Volume Target (CY) | Design Distribution (CY) | Design Distribution (Tons) |
|--------------|------------------------------|-------------------------|---|--------------------------|----------------------------|
| Vanderbilt | R-22 | 100 | 0 | 0 | 0 |
| | R-23 | 1,017 | 0 | 0 | 0 |
| | R-24 | 1,074 | 0 | 0 | 0 |
| | R-25 | 1,051 | 0 | 0 | 0 |
| | R-26 taper | 456 | | 4,538 | 6,806 |
| | R-26 | 495 | 11,443 | 9,851 | 14,777 |
| | R-27 | 1,095 | 20,954 | 14,911 | 22,366 |
| | R-28 | 1,026 | 10,290 | 13,381 | 20,072 |
| | R-29 | 942 | 9,453 | 9,459 | 14,189 |
| | R-30 | 912 | 7,860 | 7,083 | 10,625 |
| R-30 taper | 200 | | 777 | 1,165 | |
| Pelican Bay | R-32 | 997 | 7,378 | 0 | 0 |
| | R-33 | 1,008 | 6,230 | 0 | 0 |
| | R-34 taper | 195 | 4,312 | 564 | 847 |
| | R-35 taper | 205 | | 1,810 | 2,715 |
| | R-35 | 790 | 10,360 | 9,380 | 14,070 |
| | R-36 | 492 | 5,320 | 6,390 | 9,585 |
| | R-36 taper | 528 | | 5,143 | 7,714 |
| R-37 taper | 527 | 0 | 1,712 | 2,568 | |
| | Vanderbilt Sub-Total | 8,168 | 60,000 | 60,000 | 90,000 |
| | Pelican Bay Sub-Total | 4,741 | 35,000 | 25,000 | 37,500 |
| Park Shore | R-44 taper | 343 | | 1,698 | 2,547 |
| | R-44 | 520 | 5,200 | 5,148 | 7,722 |
| | R-45 | 1,078 | 5,181 | 6,396 | 9,594 |
| | R-46 | 1,040 | 14,200 | 12,146 | 18,219 |
| | R-47 | 485 | 5,555 | 5,120 | 7,679 |
| | R-47 Taper | 500 | | 2,639 | 3,959 |
| | R-48 | 1,000 | 0 | 0 | 0 |
| | R-49 | 1,077 | 0 | 0 | 0 |
| | T-50 taper | 500 | | 3,399 | 5,098 |
| | T-50 | 165 | 10,611 | 2,243 | 3,365 |
| | R-51 | 1,108 | 8,709 | 8,709 | 13,063 |
| | R-52 | 967 | 19,852 | 19,852 | 29,778 |
| | R-53 | 1,060 | 3,997 | 3,997 | 5,996 |
| | R-54 | 535 | 1,695 | 2,678 | 4,017 |
| | R-54 taper | 390 | | 976 | 1,464 |
| R-55 | | 0 | 0 | 0 | |
| | Park Shore Sub-Total | 10,034 | 75,000 | 75,000 | 112,500 |
| Naples Beach | 200' Taper | 200 | 0 | 3,116 | 4,674 |
| | R-58A | 530 | 16,516 | 16,516 | 24,774 |
| | R-58 | 737 | 9,458 | 9,458 | 14,187 |
| | R-59 | 1,035 | 6,056 | 6,056 | 9,084 |
| | R-60 | 1,081 | 1,100 | 1,100 | 1,650 |
| | R-61 | 1,049 | 0 | 0 | 0 |
| | R-62 | 1,015 | 4,988 | 4,988 | 7,482 |
| | R-63 | 967 | 19,356 | 19,356 | 29,034 |
| | R-64 taper | 770 | 2,267 | 7,703 | 11,555 |
| | R-65 | 804 | 0 | 0 | 0 |
| | R-66 | 813 | 0 | 0 | 0 |
| | R-67 | 805 | 0 | 0 | 0 |
| | R-68 taper | 22 | 0 | 0 | 0 |
| | R-69 taper | 805 | 0 | 1,960 | 2,940 |
| | R-70 | 800 | 2,944 | 3,900 | 5,850 |
| | R-71 | 803 | 2,620 | 4,278 | 6,417 |
| | R-72 taper | 589 | 0 | 1,569 | 2,353 |
| | R-73 | 813 | 0 | 0 | 0 |
| | R-74 | 803 | 0 | 0 | 0 |
| R-75 | 795 | 0 | 0 | 0 | |
| R-76 | 799 | 10,314 | 0 | 0 | |
| R-77 | 782 | 0 | 0 | 0 | |
| R-78 | 933 | 4,382 | 0 | 0 | |
| R-79 | 1,128 | 0 | 0 | 0 | |
| | Naples Sub-Total | 18,878 | 80,000 | 80,000 | 120,000 |
| | 2013 Project Area | 24,513 | 250,000 | 240,000 | 360,000 |

Collier County 2013 Hot Spot and Tropical Storm Fay Repair
Preliminary Fill Distribution From/To by Monument
10/11/2013

| Fill Segment | | | Average Density (CY/LF) | Length (ft) | Volume (CY) | Volume (TONS) |
|-------------------------------|----|--------------|----------------------------|---------------|----------------|----------------|
| R-24 | to | R-25 | - | - | - | - |
| Taper | to | R-26 | 9.95 | 456 | 4,538 | 6,807 |
| R-26 | to | R-27 | 16.77 | 993 | 16,650 | 24,975 |
| R-27 | to | R-28 | 12.96 | 1195 | 15,496 | 23,244 |
| R-28 | to | R-29 | 11.17 | 855 | 9,546 | 14,320 |
| R-29 | to | R-30 | 9.26 | 1028 | 9,522 | 14,283 |
| R-30 | to | Taper | 4.25 | 600 | 4,248 | 6,372 |
| R-31 | to | R-32 | - | - | - | - |
| Vanderbilt Sub-Total | | | | 5,127 | 60,000 | 90,000 |
| R-33 | to | R-34 | - | - | - | - |
| Taper | to | R-35 | 5.95 | 700 | 5,951 | 8,926 |
| R-35 | to | R-36 | 12.42 | 999 | 12,411 | 18,616 |
| R-36 | to | R-37 (taper) | 6.48 | 1024 | 6,638 | 9,958 |
| R-37 | to | R-38 | - | - | - | - |
| Pelican Bay Sub-Total | | | | 2,723 | 25,000 | 37,500 |
| R-42 | to | R-43 | - | - | - | - |
| Taper | to | R-44 | 4.94 | 343 | 1,695 | 2,543 |
| R-44 | to | R-45 | 7.90 | 1048 | 8,284 | 12,427 |
| R-45 | to | R-46 | 8.81 | 1106 | 9,743 | 14,614 |
| R-46 | to | R-47 | 11.12 | 973 | 10,820 | 16,230 |
| R-47 | to | Taper | 5.28 | 500 | 2,639 | 3,959 |
| R-48 | to | R-49 | - | - | - | - |
| R-49 | to | T-50 | - | - | - | - |
| Taper | to | R-51 | 10.72 | 1329 | 10,856 | 16,284 |
| R-51 | to | R-52 | 14.17 | 885 | 12,543 | 18,815 |
| R-52 | to | R-53 | 12.14 | 1048 | 12,723 | 19,084 |
| R-53 | to | R-54 | 4.39 | 1070 | 4,697 | 7,045 |
| R-54 | to | Taper | 2.50 | 400 | 999 | 1,499 |
| U-55 | to | R-56 | - | - | - | - |
| Park Shore Sub-Total | | | | 8,702 | 75,000 | 112,500 |
| Taper | to | R-58A | 11.00 | 460 | 11,216 | 16,824 |
| R-58A | to | R-58 | 21.99 | 521 | 11,457 | 17,185 |
| R-58 | to | R-59 | 9.34 | 985 | 9,196 | 13,794 |
| R-59 | to | R-60 | 3.42 | 1085 | 3,713 | 5,570 |
| R-60 | to | R-61 | 0.50 | 1077 | 542 | 813 |
| R-61 | to | R-62 | 2.46 | 1020 | 2,510 | 3,765 |
| R-62 | to | R-63 | 12.46 | 1008 | 12,564 | 18,846 |
| R-63 | to | R-64 | 10.01 | 926 | 15,667 | 23,500 |
| R-64 | to | Taper | 3.90 | 300 | 1,170 | 1,755 |
| R-65 | to | R-66 | - | - | - | - |
| R-66 | to | R-67 | - | - | - | - |
| R-67 | to | R-68 | - | - | - | - |
| Taper | to | R-69 | 2.74 | 427 | 538 | 807 |
| R-69 | to | R-70 | 5.49 | 798 | 3,280 | 4,921 |
| R-70 | to | R-71 | 5.42 | 802 | 4,346 | 6,520 |
| R-71 | to | R-72 | 5.36 | 803 | 3,620 | 5,430 |
| R-72 | to | Taper | 0.90 | 200 | 181 | 271 |
| R-73 | to | R-74 | - | - | - | - |
| Naples Beach Sub-Total | | | | 10,412 | 80,000 | 120,000 |
| PROJECT TOTAL | | | | 26,964 | 240,000 | 360,000 |

Note: Most fill segments are not uniformly filled.



BEACH RENOURISHMENT 2013

[Share & Bookmark](#)

Font Size:

[Print](#)

[Fe](#)

On September 10, 2013 the Board of County Commissioner (BCC) approved the Collier County Beach Renourishment Project for staff recommendation of two (2) truck haul/placement contractors to perform the upcoming beach renourishment work (BCC Executive Summary). Contract 13-6147 awarded to the lowest bidders, Eastman Aggregates for the Vanderbilt and Pelican Bay beaches; Phillips and Jordan for the Park Shore and Naples Portion of this project. Stewart Mining in Imm will provide sand for this project which is currently being stockpiled. Construction Engineering Inspection (CEI) will be performed by Collier County Coastal Zone Management (CZM) with third auditing and quality assurance provided by Atkins Engineering. Staff is working truck routes, vehicle inspections, staging areas, maintenance of traffic and speed zone enforcement with the Collier County Sheriff's Office and the City of Naples Police Department. Hours of operation will be sunrise to sunset six days a week.

Information Toll Free Hotline: 855.456.4792

Recorded Information Line: 239.252.2996

Or e-mail questions to CollierBeachUpdates@PhaseV.com

- [Current Draft Truck Haul Route](#)
- [Weekly Beach Renourishment Update Meetings](#)
- [Frequently Asked Questions](#)
- [Permit & Regulatory Correspondence](#)
- [News Releases](#)
- [Renourishment Baseline Beach Aerials](#)
- [Physical Monitoring Plan of the Collier County Beach Renourishment Project 1/2013](#)
- [13-6147 Eastman Aggregate Award Letter and Contract](#)



WEEKLY BEACH RENOURISHMENT UPDATE MEETINGS

[Share & Bookmark](#)

Font Size:

[Print](#)

[Fe](#)

Weekly Beach Renourishment Update meetings will be held each Friday at 1:00pm at 2800 N. Horseshoe Drive in Conference Room 609/610. The audio recording will be posted after each meeting.

- Octobe 10, 2013

