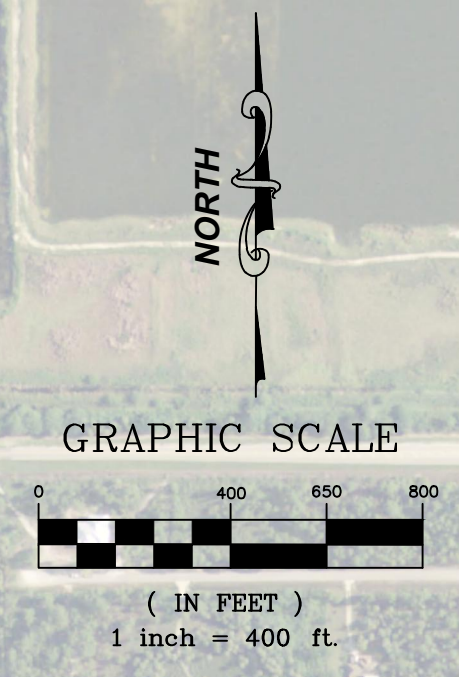
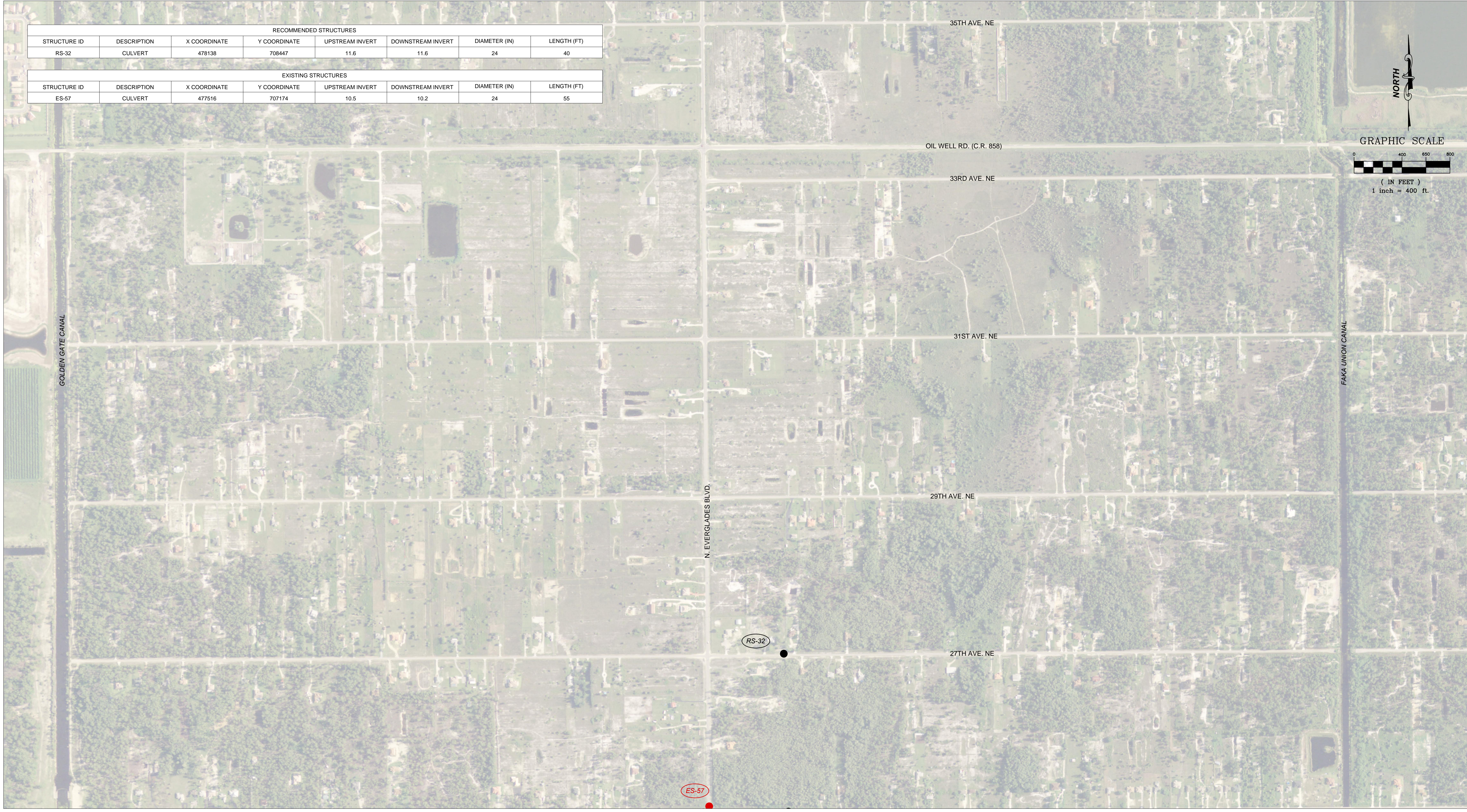


RECOMMENDED STRUCTURES							
STRUCTURE ID	DESCRIPTION	X COORDINATE	Y COORDINATE	UPSTREAM INVERT	DOWNSTREAM INVERT	DIAMETER (IN)	LENGTH (FT)
RS-32	CULVERT	478138	708447	11.6	11.6	24	40

EXISTING STRUCTURES							
STRUCTURE ID	DESCRIPTION	X COORDINATE	Y COORDINATE	UPSTREAM INVERT	DOWNSTREAM INVERT	DIAMETER (IN)	LENGTH (FT)
ES-57	CULVERT	477516	707174	10.5	10.2	24	55



Author: 2/2/12  
 © Collier\_NGCE Restoration Plans/ST/PLANS-ALT.DWG - 12/21/2012 2:25 PM



4030 W. Boy Scout Blvd., Suite 700  
 Tampa, Florida 33607  
 Tel. (813) 282-7275  
 Fax (813) 282-9767  
 WWW.ATKINS.COM  
 FBPE Certificate of Authorization No. 24

CLIENT



PROJECT

NORTH GOLDEN GATE ESTATES  
 FLOWWAY RESTORATION PROJECT  
 ALTERNATIVE 2

TASK

PROJECT AREA 8  
 SITE PLAN

ORIGINAL REVISIONS:	DECEMBER 2012
1	
2	
3	
4	
5	

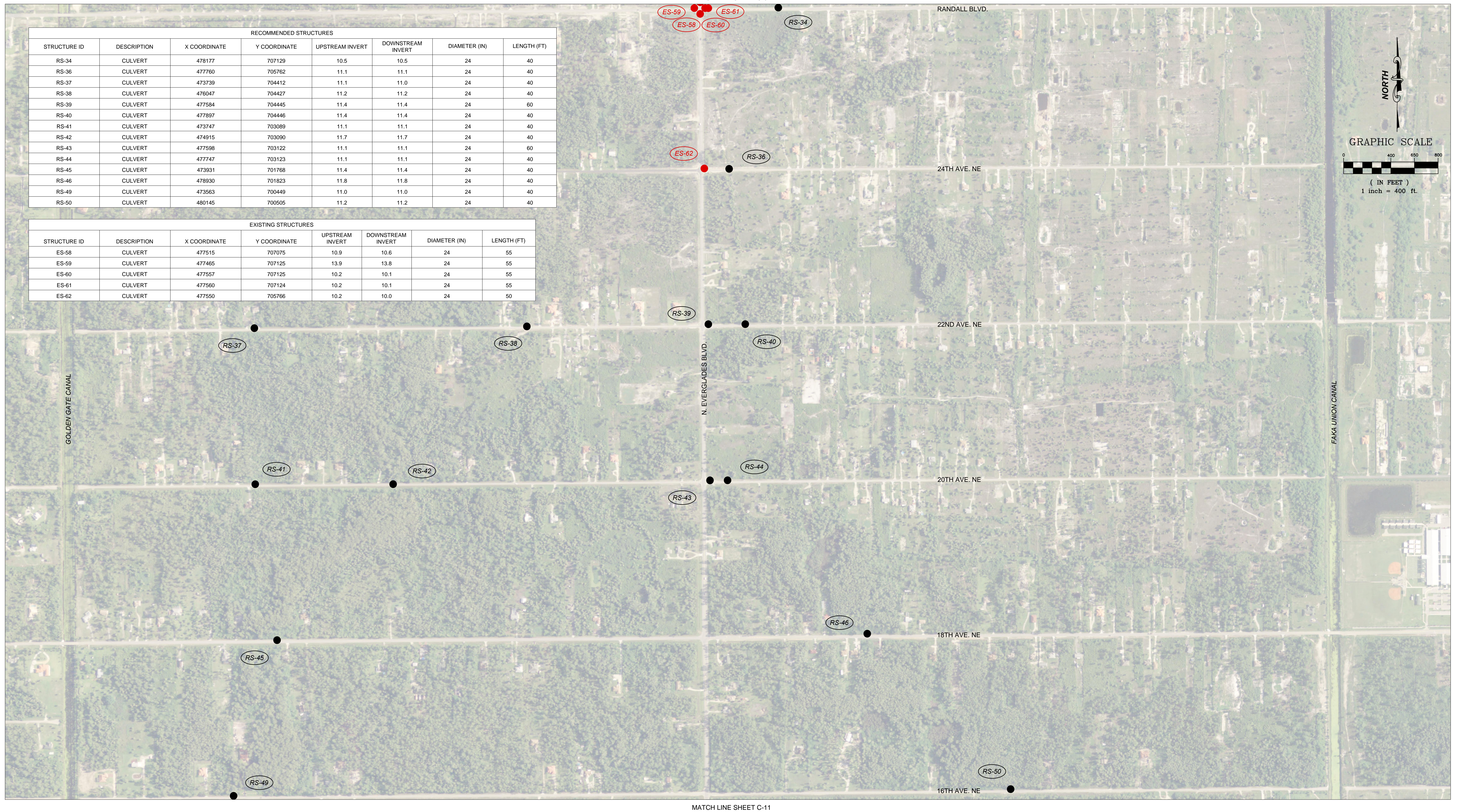
6	
7	
8	
9	
10	
11	
12	

GEORGE G. WISE  
 FLORIDA P.E. NO. 24486

JOB NO.	100024759
DRAWN	NJS
PE	CGW
CHECKED	PD
QC	

RECOMMENDED STRUCTURES							
STRUCTURE ID	DESCRIPTION	X COORDINATE	Y COORDINATE	UPSTREAM INVERT	DOWNSTREAM INVERT	DIAMETER (IN)	LENGTH (FT)
RS-34	CULVERT	478177	707129	10.5	10.5	24	40
RS-36	CULVERT	477760	705762	11.1	11.1	24	40
RS-37	CULVERT	473739	704412	11.1	11.0	24	40
RS-38	CULVERT	476047	704427	11.2	11.2	24	40
RS-39	CULVERT	477584	704445	11.4	11.4	24	60
RS-40	CULVERT	477897	704446	11.4	11.4	24	40
RS-41	CULVERT	473747	703089	11.1	11.1	24	40
RS-42	CULVERT	474915	703090	11.7	11.7	24	40
RS-43	CULVERT	477598	703122	11.1	11.1	24	60
RS-44	CULVERT	477747	703123	11.1	11.1	24	40
RS-45	CULVERT	473931	701768	11.4	11.4	24	40
RS-46	CULVERT	478930	701823	11.8	11.8	24	40
RS-49	CULVERT	473563	700449	11.0	11.0	24	40
RS-50	CULVERT	480145	700505	11.2	11.2	24	40

EXISTING STRUCTURES							
STRUCTURE ID	DESCRIPTION	X COORDINATE	Y COORDINATE	UPSTREAM INVERT	DOWNSTREAM INVERT	DIAMETER (IN)	LENGTH (FT)
ES-58	CULVERT	477515	707075	10.9	10.6	24	55
ES-59	CULVERT	477465	707125	13.9	13.8	24	55
ES-60	CULVERT	477557	707125	10.2	10.1	24	55
ES-61	CULVERT	477560	707124	10.2	10.1	24	55
ES-62	CULVERT	477550	705766	10.2	10.0	24	50



4030 W. Boy Scout Blvd., Suite 700  
 Tampa, Florida 33607  
 Tel. (813) 282-7275  
 Fax (813) 282-9767  
 WWW.ATKINS.COM  
 FBPE Certificate of Authorization No. 24

CLIENT



PROJECT

NORTH GOLDEN GATE ESTATES  
 FLOWWAY RESTORATION PROJECT  
 ALTERNATIVE 2

TASK

PROJECT AREA 9  
 SITE PLAN

ORIGINAL DECEMBER 2012  
 REVISIONS:

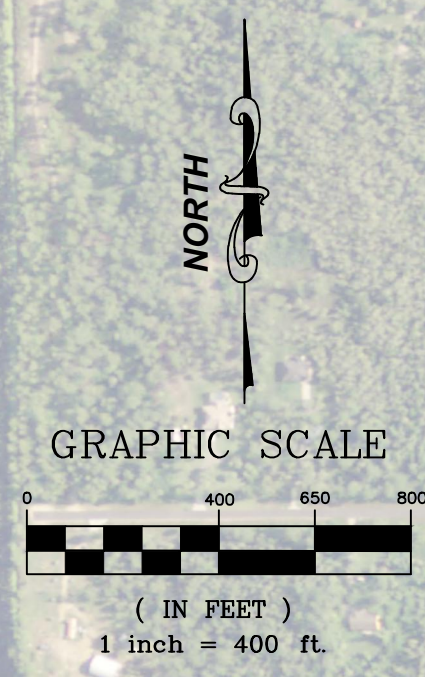
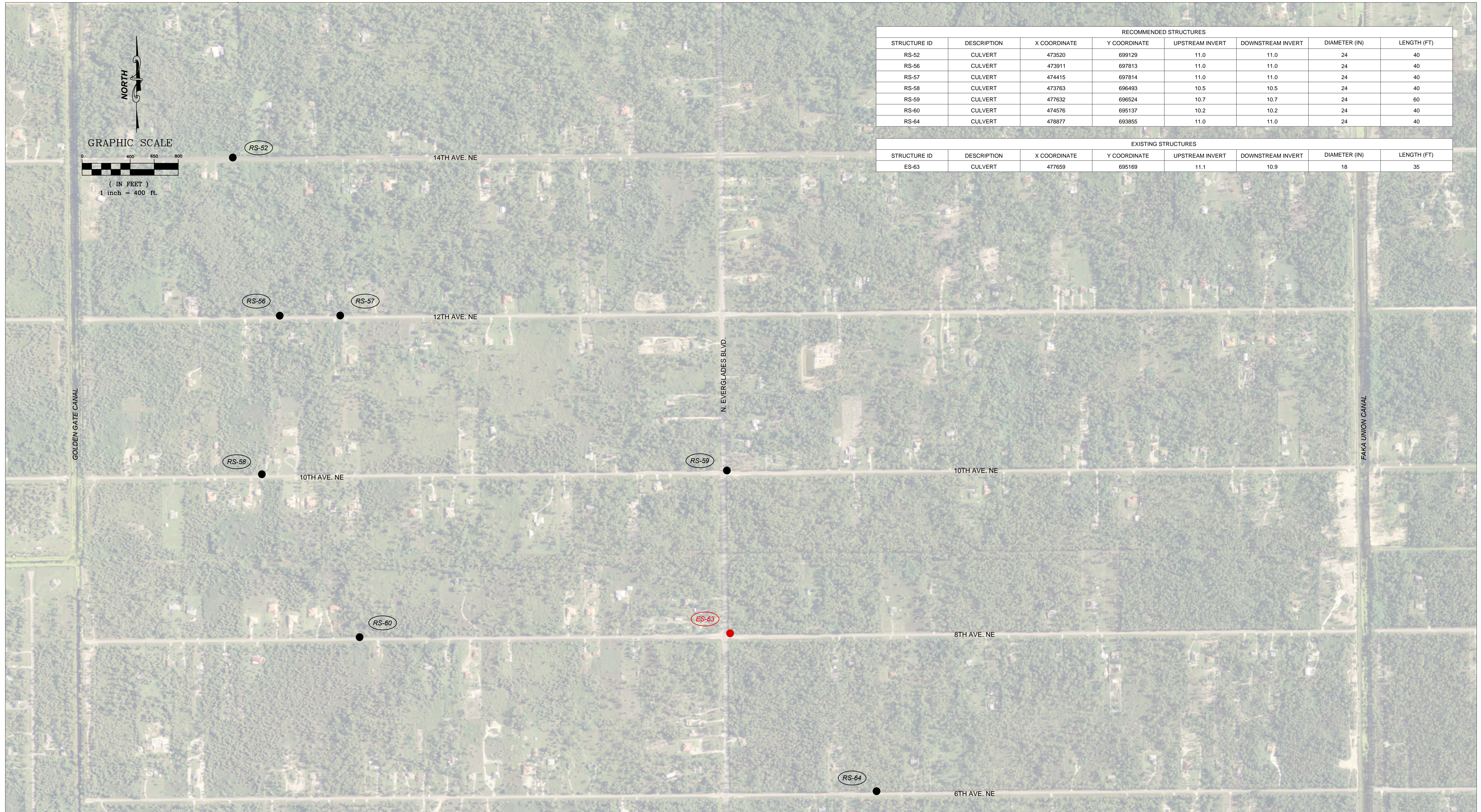
- 1 \_\_\_\_\_
- 2 \_\_\_\_\_
- 3 \_\_\_\_\_
- 4 \_\_\_\_\_
- 5 \_\_\_\_\_

- 6 \_\_\_\_\_
- 7 \_\_\_\_\_
- 8 \_\_\_\_\_
- 9 \_\_\_\_\_
- 10 \_\_\_\_\_
- 11 \_\_\_\_\_
- 12 \_\_\_\_\_

GEORGE G. WISE  
 FLORIDA P.E. NO. 24486

JOB NO. 100024759  
 DRAWN NJS  
 PE CGW  
 CHECKED PD  
 QC

SHEET C-10



RECOMMENDED STRUCTURES							
STRUCTURE ID	DESCRIPTION	X COORDINATE	Y COORDINATE	UPSTREAM INVERT	DOWNSTREAM INVERT	DIAMETER (IN)	LENGTH (FT)
RS-52	CULVERT	473520	699129	11.0	11.0	24	40
RS-56	CULVERT	473911	697813	11.0	11.0	24	40
RS-57	CULVERT	474415	697814	11.0	11.0	24	40
RS-58	CULVERT	473763	696493	10.5	10.5	24	40
RS-59	CULVERT	477632	696524	10.7	10.7	24	60
RS-60	CULVERT	474576	695137	10.2	10.2	24	40
RS-64	CULVERT	478877	693855	11.0	11.0	24	40

EXISTING STRUCTURES							
STRUCTURE ID	DESCRIPTION	X COORDINATE	Y COORDINATE	UPSTREAM INVERT	DOWNSTREAM INVERT	DIAMETER (IN)	LENGTH (FT)
ES-63	CULVERT	477659	695169	11.1	10.9	18	35

Author: 2/17/17  
G:\Collier\_NGCE\_Restoration\PIANS\PIANS-ALT2.DWG - 12/21/2012 2:28 PM



4030 W. Boy Scout Blvd., Suite 700  
Tampa, Florida 33607  
Tel. (813) 282-7275  
Fax (813) 282-9767  
WWW.ATKINS.COM  
FBPE Certificate of Authorization No. 24

CLIENT



PROJECT

NORTH GOLDEN GATE ESTATES  
FLOWWAY RESTORATION PROJECT  
ALTERNATIVE 2

TASK

PROJECT AREA 10  
SITE PLAN

ORIGINAL DECEMBER 2012

REVISIONS:

1		6
2		7
3		8
4		9
5		10
		11
		12

GEORGE C. WISE  
FLORIDA P.E. NO. 24486

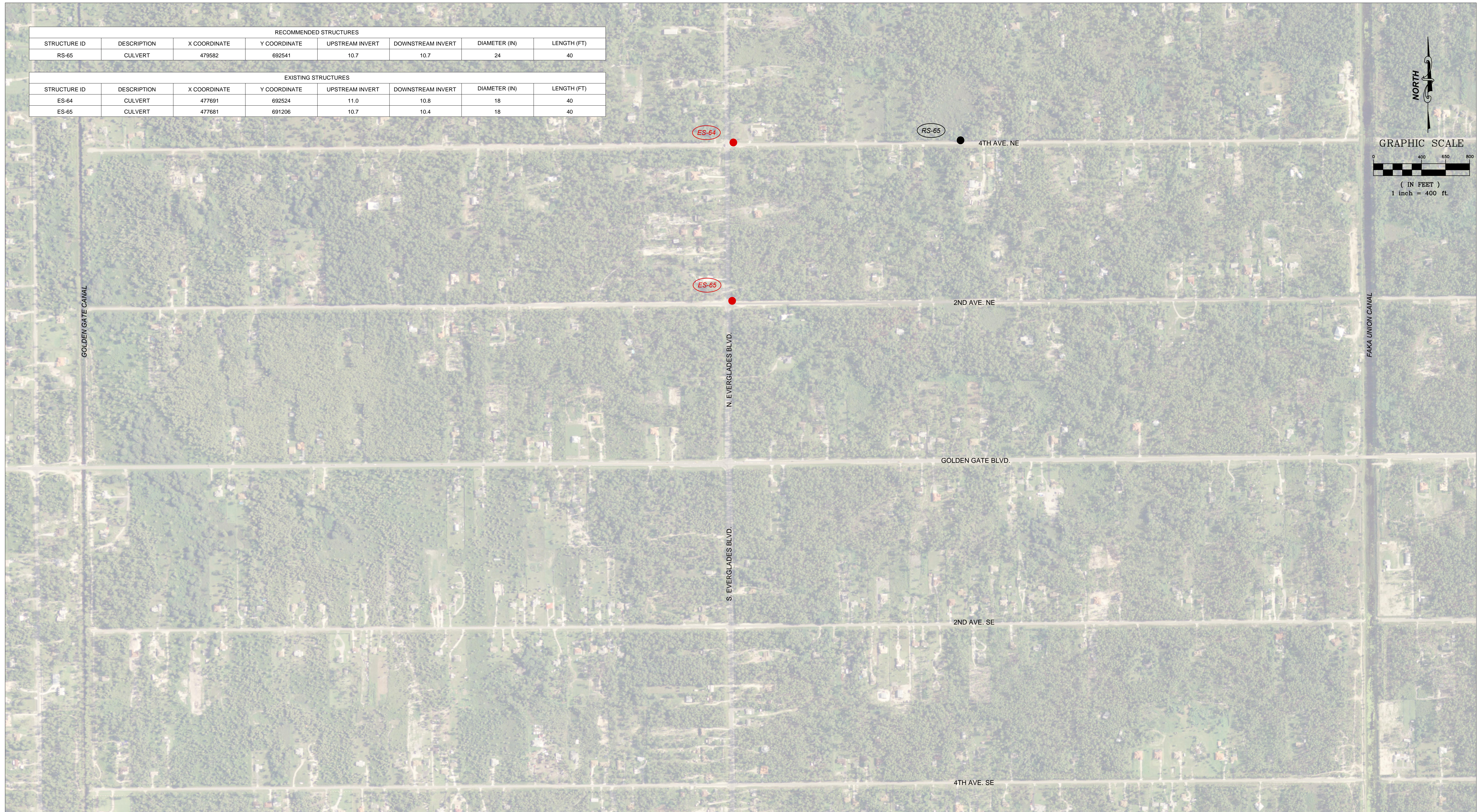
JOB NO. 100024759  
DRAWN NUS  
PE GCW  
CHECKED PD  
QC

SHEET C-11

RECOMMENDED STRUCTURES							
STRUCTURE ID	DESCRIPTION	X COORDINATE	Y COORDINATE	UPSTREAM INVERT	DOWNSTREAM INVERT	DIAMETER (IN)	LENGTH (FT)
RS-65	CULVERT	479582	692541	10.7	10.7	24	40

EXISTING STRUCTURES							
STRUCTURE ID	DESCRIPTION	X COORDINATE	Y COORDINATE	UPSTREAM INVERT	DOWNSTREAM INVERT	DIAMETER (IN)	LENGTH (FT)
ES-64	CULVERT	477691	692524	11.0	10.8	18	40
ES-65	CULVERT	477681	691206	10.7	10.4	18	40



4030 W. Boy Scout Blvd., Suite 700  
 Tampa, Florida 33607  
 Tel. (813) 282-7275  
 Fax (813) 282-9767  
 WWW.ATKINS.COM  
 FBPE Certificate of Authorization No. 24



NORTH GOLDEN GATE ESTATES  
 FLOWWAY RESTORATION PROJECT  
 ALTERNATIVE 2

PROJECT AREA 11  
 SITE PLAN

ORIGINAL	DECEMBER 2012	6
REVISIONS:		7
1		8
2		9
3		10
4		11
5		12

GEORGE G. WISE  
 FLORIDA P.E. NO. 24486

JOB NO. 100024759  
 DRAWN NJS  
 PE GCW  
 CHECKED PD  
 QC

SHEET C-12

NOTE: NO WORK IS TO BE PERFORMED WITHIN THIS AREA.



Author: 2/17/12  
G:\Collier\NORGE Restoration\PLANS\PLANS-ALT2.DWG - 12/21/2012 2:28 PM



4030 W. Boy Scout Blvd., Suite 700  
Tampa, Florida 33607  
Tel. (813) 282-7275  
Fax (813) 282-9767  
WWW.ATKINS.COM  
FBPE Certificate of Authorization No. 24

CLIENT



PROJECT

NORTH GOLDEN GATE ESTATES  
FLOWWAY RESTORATION PROJECT  
ALTERNATIVE 2

TASK

PROJECT AREA 12  
SITE PLAN

ORIGINAL DECEMBER 2012  
REVISIONS:

1	_____	6	_____
2	_____	7	_____
3	_____	8	_____
4	_____	9	_____
5	_____	10	_____
		11	_____
		12	_____

GEORGE G. WISE  
FLORIDA P.E. NO. 24486

JOB NO. 100024759  
DRAWN NJS  
PE GCW  
CHECKED PD  
QC \_\_\_\_\_

SHEET C-13