

# COUNTY LAW ENFORCEMENT FACILITIES

## CONTENTS

- COUNTY LAW ENFORCEMENT SUMMARY FORM
  - TABLE
  - CHART
- BUILDINGS – MAP OF EXISTING AND LEASED
- BUILDINGS – TABLE OF EXISTING AND LEASED
- COLLIER COUNTY SHERIFF’S OFFICE CALLS FOR SERVICE 1992-2011
- COLLIER COUNTY SHERIFF’S OFFICE POPULATIONS, PART I CRIMES AND CRIME RATES
- AVERAGE RESPONSE TIME FOR SHERIFF’S OFFICE DISPATCHED CALLS FOR SERVICE
- COLLIER COUNTY SHERIFF’S OFFICE DISTRICT BOUNDARIES MAP
- COLLIER CRIME RATE & COUNTY COMPARISON



**2012 AUIR LAW ENFORCEMENT  
FACILITIES SUMMARY FORM**

**Facility Type:** Law Enforcement (Category B)

**Level of Service Standard (LOSS):** 1.84 Officers per 1,000/population

**Unit Cost:** 401.2 building square footage per Officer @ \$341.62 per sq.ft.\*

Using the Unincorporated Area Peak Season and the Everglades City populations, the following is set forth:

	<u>Officers Required</u>	<u>Sq. Ft. Req'd</u>	<u>Value/Cost</u>
Available Inventory 9/30/12	656**	263,171**	\$89,904,477
Required Inventory 9/30/17***	704***	282,445	\$96,488,792
Proposed AUIR FY 2012/13 – FY 2016/17	<u>0</u>	<u>0</u>	<u>\$ 0</u>
5-year Surplus or (Deficit)	(48)	(19,258)	(\$ 6,568,172)

**Expenditures**

Proposed AUIR FY 2012/13 – FY 2016/17 Expenditures	\$ 0
Debt Service Payments for 2005, 2010 & 2010B Bonds	\$ 12,340,076
<b>Total Expenditures</b>	<b>\$ 12,340,076</b>

**Revenues**

Impact Fees anticipated	\$ 2,082,936
Interest/Misc.	\$ 64,500
Sheriff's contribution: Special Op's Bldg. (pd from 9/30 turn-back)	\$ 5,720,400
Loan from Countywide Capital Projects (Gen Fund)	\$ 3,490,840
Carry Forward (unspent cash as of 9/30/12)	<u>\$ 981,400</u>
<b>Total Revenues</b>	<b>\$ 12,340,076</b>

Surplus or (Deficit) Revenues	\$ 0
-------------------------------	------

Revenues needed to maintain existing LOSS	none
---	------

**Recommendation:**

That the CCPC forward a recommendation of approval to the BCC for the proposed "Law Enforcement AUIR for FY 2012/13 – FY 2016/17", which contains no new projects over the five-year planning period.

Notes:

\* Unit cost value based upon 2010 Law Enforcement Impact Fee Study.

\*\* Actual Inventory figures.

\*\*\* The required inventory does not attempt to predict future possible increases or decreases in land, building and equipment costs.

2012 AUIR  
Law Enforcement  
**(Peak Season)**  
0.00184 Officers/Capita

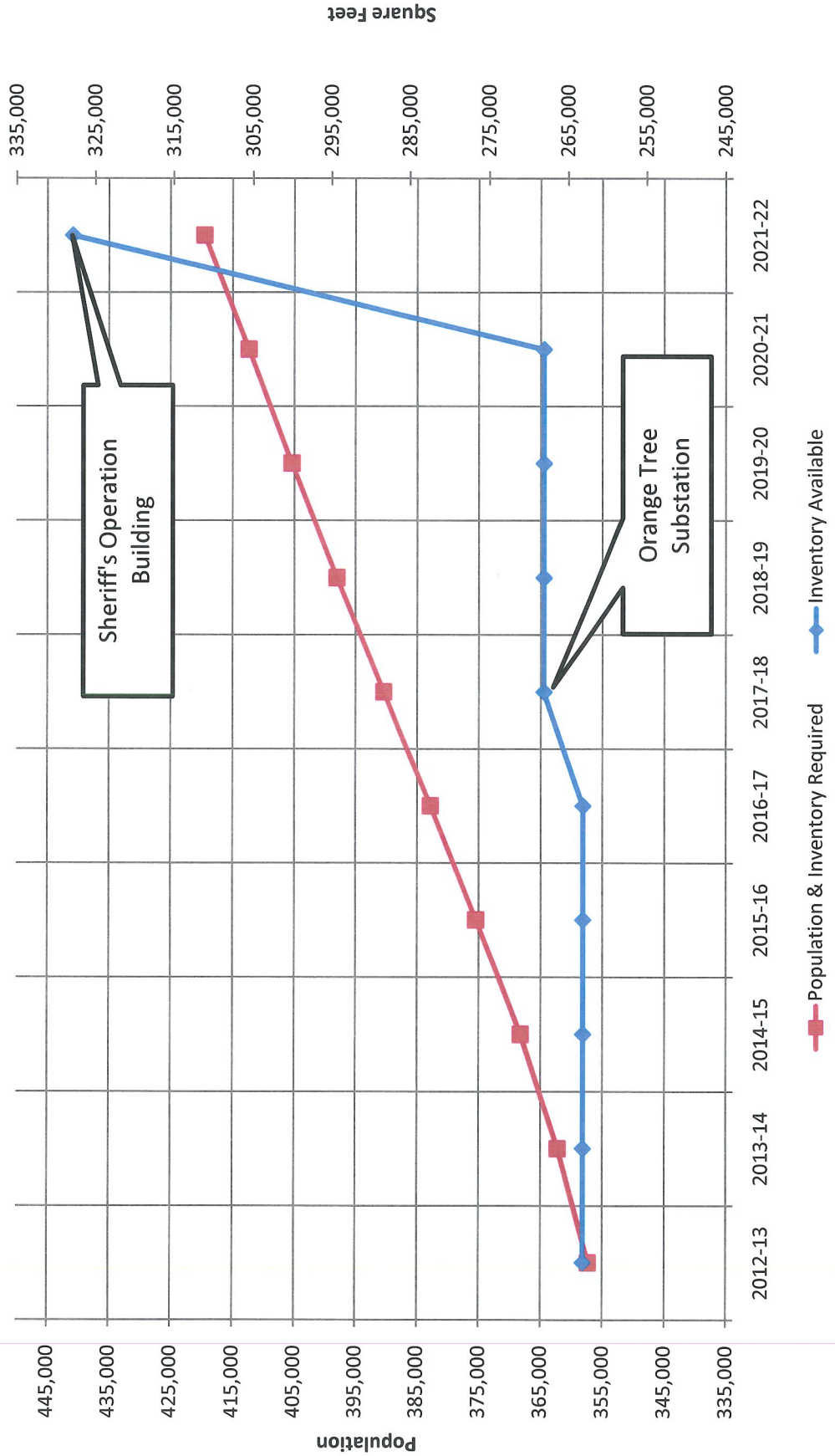
FISCAL YEAR	POPULATION (UNINCORPORATED AREA)	OFFICERS/CAP.	REQUIRED 0.00184	SQUARE FOOTED PER OFFICER 401.2	SQ FT PLANNED IN AUIR	SQ FT AVAILABLE	SURPLUS/ (DEFICIENCY) SQUARE FOOT	PER SQUARE FOOT \$339.22
2011-12	352,541	649	260,258	0	263,171	2,913	\$988,148	
2012-13	357,337	658	263,789	0	263,171	-618	(\$209,638)	
2013-14	362,206	667	267,400	0	263,171	-4,229	(\$1,434,561)	
2014-15	368,234	678	271,853	0	263,171	-8,682	(\$2,945,108)	
2015-16	375,456	691	277,149	0	263,171	-13,978	(\$4,741,617)	
2016-17	382,821	704	282,605	0	263,171	-19,434	(\$6,592,401)	
<b>1st 5-Year Growth (2013-2017)</b>	<b>30,280</b>	<b>56</b>	<b>22,347</b>	<b>0</b>				
2017-18	390,335	718	288,142	4,912	268,083	-20,059	(\$6,804,414)	
2018-19	397,999	732	293,799	0	268,083	-25,716	(\$8,723,382)	
2019-20	405,350	746	299,215	0	268,083	-31,132	(\$10,560,597)	
2020-21	412,375	759	304,431	0	268,083	-36,348	(\$12,329,969)	
2021-22	419,526	772	309,686	59,810	327,893	18,207	\$6,176,179	
<b>2nd 5-Year Growth (2018-2022)</b>	<b>36,705</b>	<b>68</b>	<b>27,081</b>	<b>64,722</b>				
<b>Total 10-Year Growth (2013-2022)</b>	<b>66,985</b>	<b>123</b>	<b>49,428</b>	<b>64,722</b>				

The construction of the Orange Tree Substation and Sheriff's Operation Building are programmed within these years per the Law Enforcement Master Plan, but construction is tentative at best. The need for these improvements will be evaluated on an annual basis based upon demands on the system and available resources. It should be noted that the Orange Tree Substation is needed to replace the existing temporary unit and allocated to FY17-18 to allow for impact fees collected to be utilized within the required seven years from date of collection.

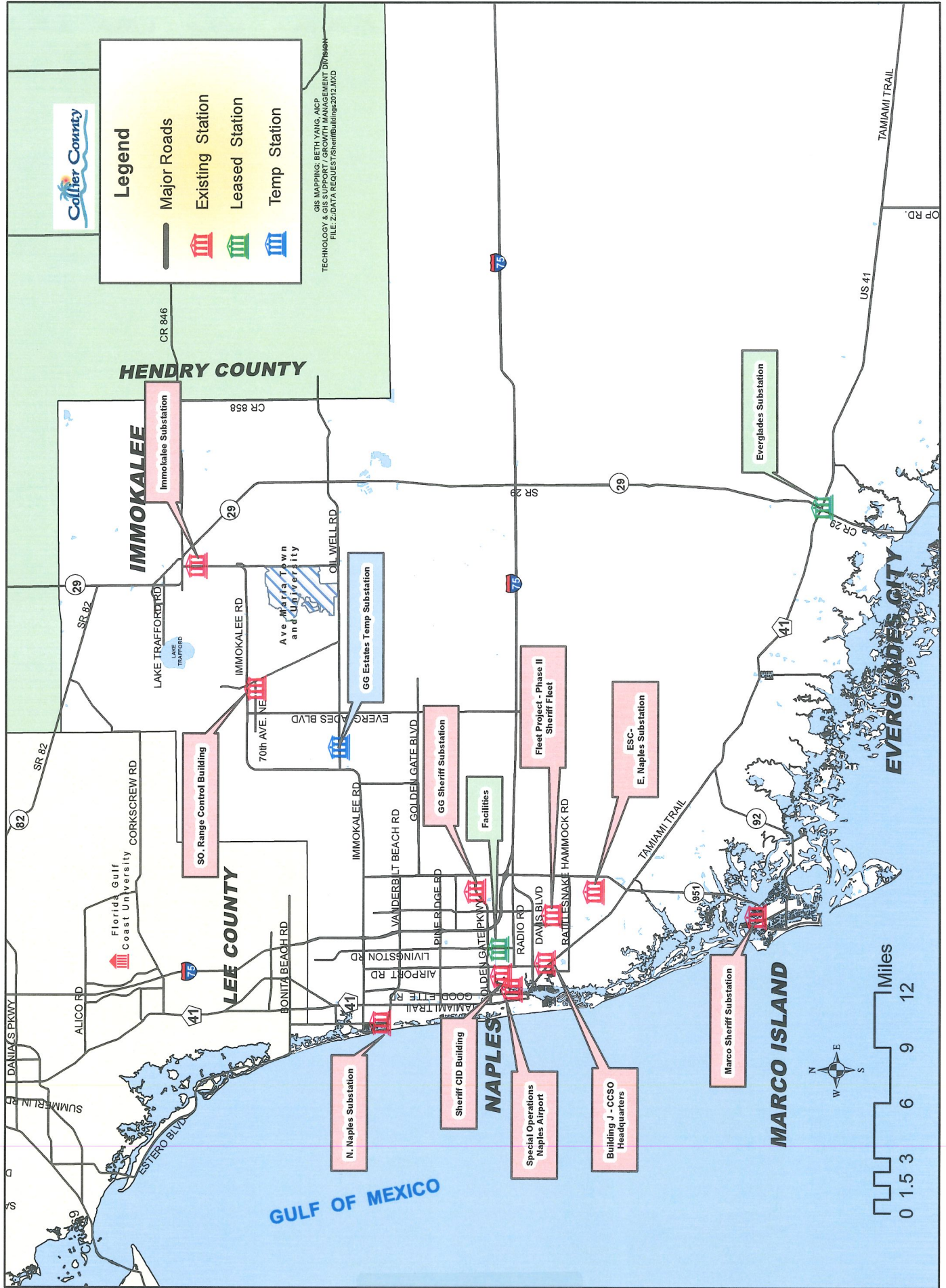
## 2012 AUJR Law Enforcement

(Peak Season)

LOSS: 0.00184 Officers per Capita, Sq. Ft. per Officer: 401.2



# 2012 LAW ENFORCEMENT BUILDINGS



## 2012 LAW ENFORCEMENT BUILDINGS - EXISTING AND LEASED

NAME	STATUS	ADDRESS	TYPE
Building "J-1" Addition -1st floor	Owned	3301 E. Tamiami Trail, Naples	Law Enforcement
Building "J-1" Addition -2nd floor	Owned	3301 E. Tamiami Trail, Naples	Law Enforcement
Building "J" Sheriff -2nd floor	Owned	3301 E. Tamiami Trail, Naples	Law Enforcement
District 2 - GG Sheriff's Substation	Owned	4741 Golden Gate Parkway, Naples	Law Enforcement
Marco Sheriff's Substation	Owned	990 N. Barfield Drive, Marco	Law Enforcement
SO Trailer	Owned	4441 70th Ave. NE, Naples	Law Enforcement
SO Range Control Bldg. #1 (2nd Fl.)	Owned	4441 70th Ave. NE, Naples	Law Enforcement
SO Range Control Bldg. #1 (2nd Fl.)	Owned	4441 70th Ave. NE, Naples	Law Enforcement
SO Range Trailer	Owned	4441 70th Ave. NE, Naples	Law Enforcement
District 8 - Immokalee SO Substation	Owned	112 S. 1st Street, Naples	Law Enforcement
District 4 - GG Estates Temp. Substation	Owned	1195 C.R. 858	Law Enforcement
Sheriff CID Building	Owned	2373 S. Horseshoe, Naples	Law Enforcement
District 1 - N. Naples Substation	Owned	766 Vanderbilt Beach Dr, Naples	Law Enforcement
District 3 - E. Naples Substation	Owned	8075 Lely Cultural Parkway	Law Enforcement
Fleet and Purchasing	Owned	2885 County Barn Road	Law Enforcement
Facilities	Leased	4373 Mercantile Ave.	Law Enforcement
Special Operations	Owned	250 Patriot Way	Law Enforcement
District 7 -Everglades Substation	Leased	32020 Tamiami Tr E.	Law Enforcement

Source: Collier County Sheriff Office

COLLIER COUNTY SHERIFF'S OFFICE  
CALLS FOR SERVICE 1992-2011  
BASED ON CALENDAR YEAR

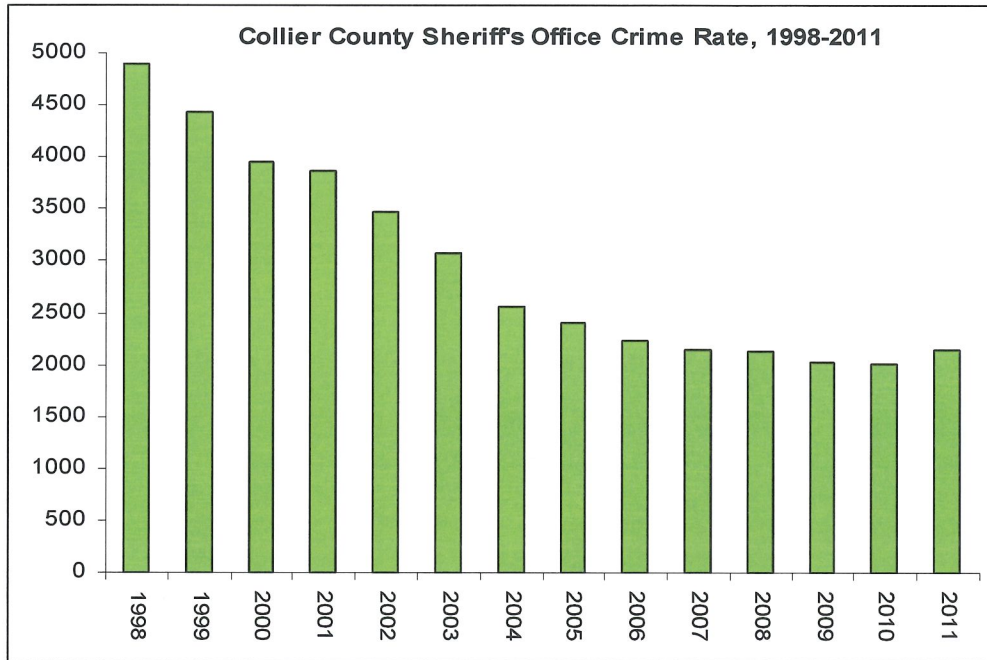
YEAR	CFS	% INCREASE	NUMBER INCREASE
1992	225,423	10.46%	21,351
1993	221,730	-1.64%	(3,693)
1994	229,485	3.50%	7,755
1995	243,827	6.25%	14,342
1996	270,046	10.75%	26,219
1997	270,591	0.20%	545
1998	292,309	8.03%	21,718
1999	279,039	-4.54%	(13,270)
2000	245,310	-12.09%	(33,729)
2001	281,984	14.95%	36,674
2002	419,309	48.70%	137,325
2003	532,580	27.01%	113,271
2004	581,912	9.26%	49,332
2005	651,269	11.92%	69,357
2006	594,686	-8.69%	(56,583)
2007	636,545	7.04%	41,859
2008	575,140	-9.65%	(61,405)
2009	509,887	-11.35%	(65,253)
2010	480,255	-5.81%	(29,632)
2011	439,184	-8.55%	(41,071)

YEAR	NN	GG	EN	EST	EG	IMM	OTHER*	TOTAL
1992	47,900	39,893	65,654	-	7,220	48,554		225,423
1993	45,745	41,354	67,114	-	7,799	44,124		221,730
1994	51,002	42,751	68,725	-	6,751	44,101		229,485
1995	55,542	45,192	75,684	-	7,010	43,404		243,827
1996	58,875	49,504	88,971	-	6,264	47,910		270,046
1997	60,734	52,804	84,075	-	8,608	45,878		270,591
1998	70,864	56,041	83,391	-	13,232	44,291		292,309
1999	67,673	52,232	77,781	-	11,203	47,059		279,039
2000	63,293	53,254	68,031	-	7,031	44,857		245,310
2001	67,250	66,741	78,795	-	9,551	52,328		281,984
2002	91,639	91,141	116,242	-	29,127	77,124		419,309
2003	118,593	122,481	153,468	-	51,559	86,479		532,580
2004	130,283	133,753	168,169	-	68,571	81,136		581,912
2005	151,873	131,152	191,667	20,785	66,272	86,740	2,780	651,269
2006	147,621	111,240	152,489	42,434	62,256	73,471	5,175	594,686
2007	154,015	121,587	183,289	45,637	53,203	75,695	3,119	636,545
2008	140,486	118,081	163,013	41,080	44,653	66,893	934	575,140
2009	119,377	106,328	147,791	35,586	41,030	58,625	1,150	509,887
2010	113,124	101,724	130,951	33,813	35,997	63,926	720	480,255
2011	110,978	89,750	118,075	30,294	34,672	54,896	519	439,184
# chg	(2,146)	(11,974)	(12,876)	(3,519)	(1,325)	(9,030)	(201)	(41,071)
%chg	-1.90%	-11.77%	-9.83%	-10.41%	-3.68%	-14.13%	-27.92%	-8.55%

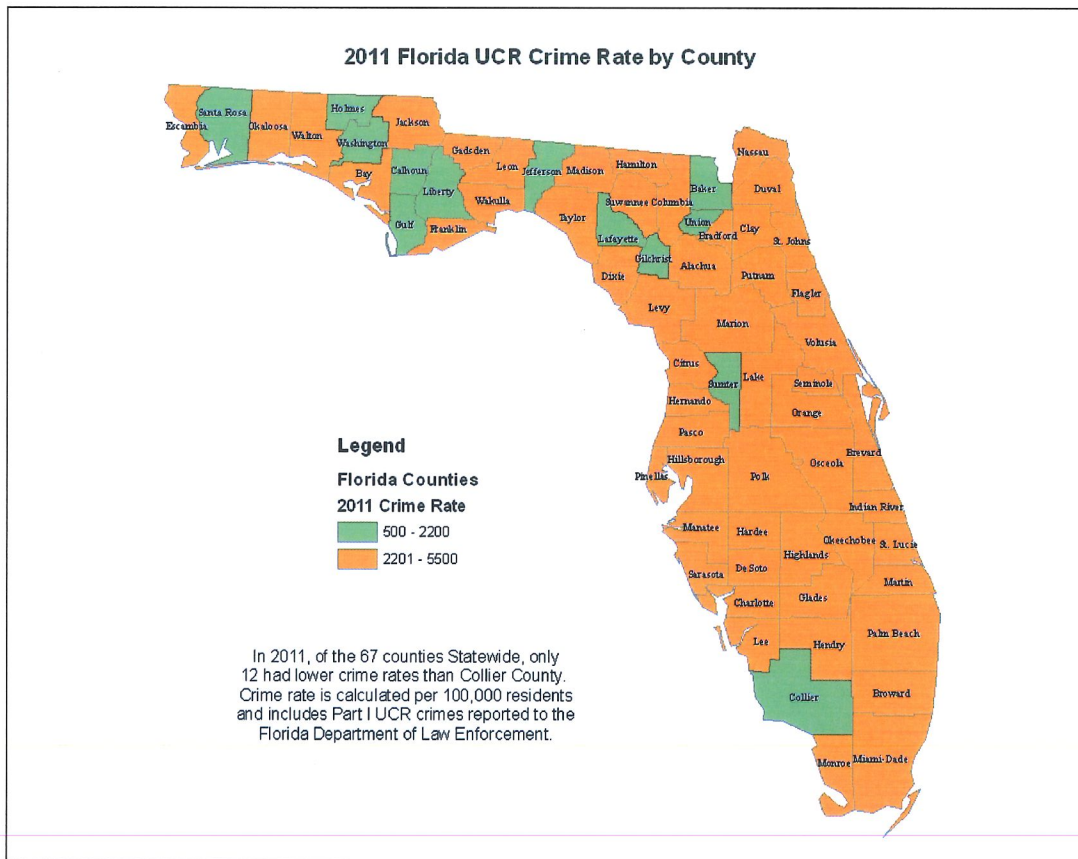
Note: Critical site checks included in the total calls for service number were 123,034 for CY 2002 or 29.3% , 167,460 for CY 2003 or 31.4%, 187,706 for CY 2004 or 32.3%, and 70,710 for CY 2005 or 10.9%.

\* Other category includes calls not captured within the districts by source or non-district groups.

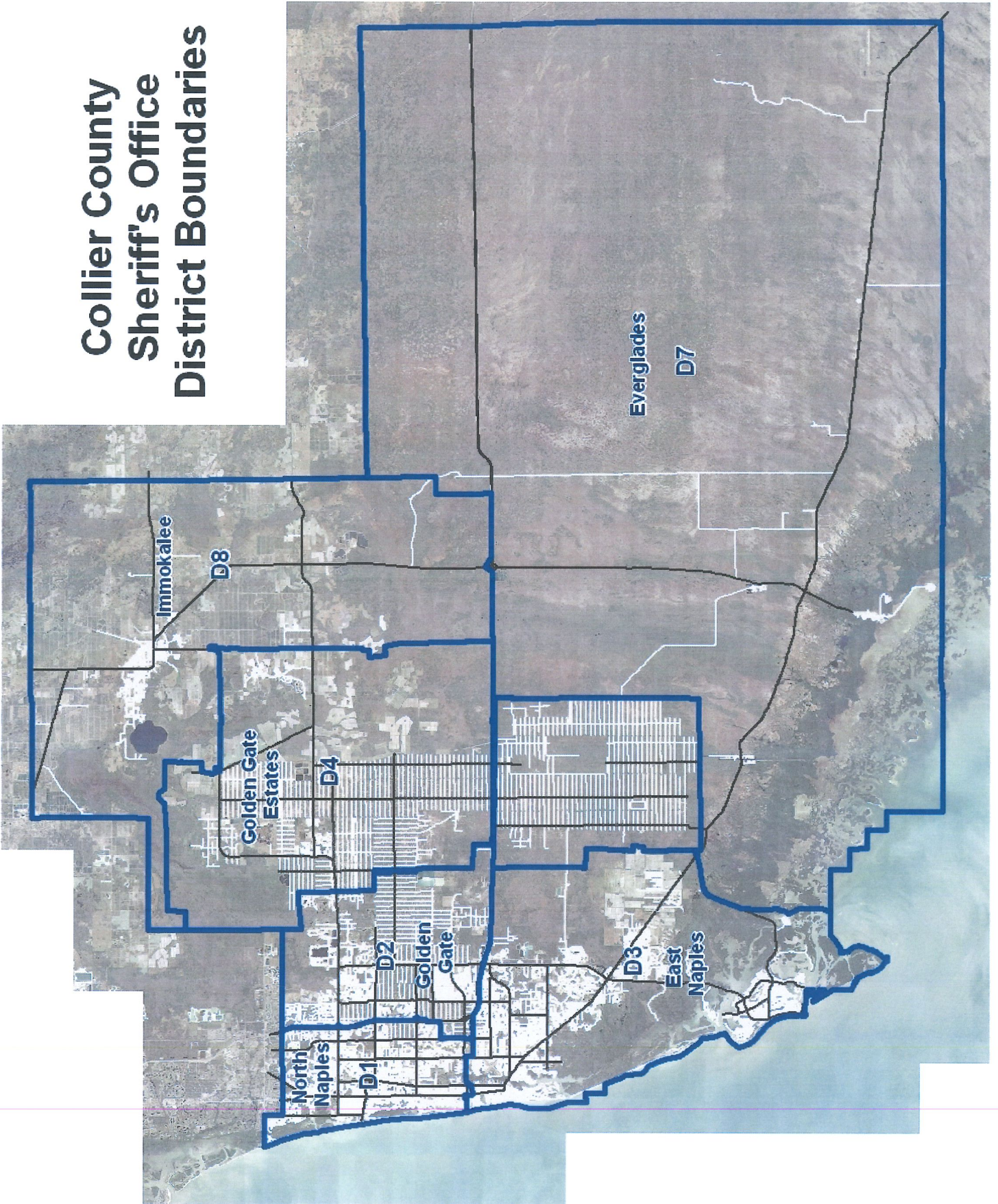




Based on Uniform Crime Reporting to Florida Department of Law Enforcement, calculated per 100,000



# Collier County Sheriff's Office District Boundaries



## Collier County Sheriff's Office Calls for Service

<b>CCSO Dispatched Calls For Service, Average Response Time by Year and Distict</b>							
District	2005	2006	2007	2008	2009	2010	2011
District 1 - North Naples	9.90	9.82	9.22	9.00	9.12	8.95	8.98
District 2 - Golden Gate	10.49	9.53	9.19	9.06	8.48	8.36	8.25
District 3 - East Naples	9.43	9.70	9.07	9.36	9.23	9.21	9.49
District 4 - Golden Gate Estates	9.84	10.44	10.57	10.66	10.31	10.85	11.00
District 7 - Everglades	13.91	13.87	13.86	14.27	14.33	13.49	12.76
District 8 - Immokalee	5.28	5.40	5.31	5.64	5.69	5.44	6.05
<b>Yearly Average</b>	<b>9.32</b>	<b>9.21</b>	<b>8.81</b>	<b>8.89</b>	<b>8.78</b>	<b>8.68</b>	<b>8.84</b>

Includes average response time in minutes for citizen-generated calls for service by district

**Average Response Time by Year, 2005 - 2011**

