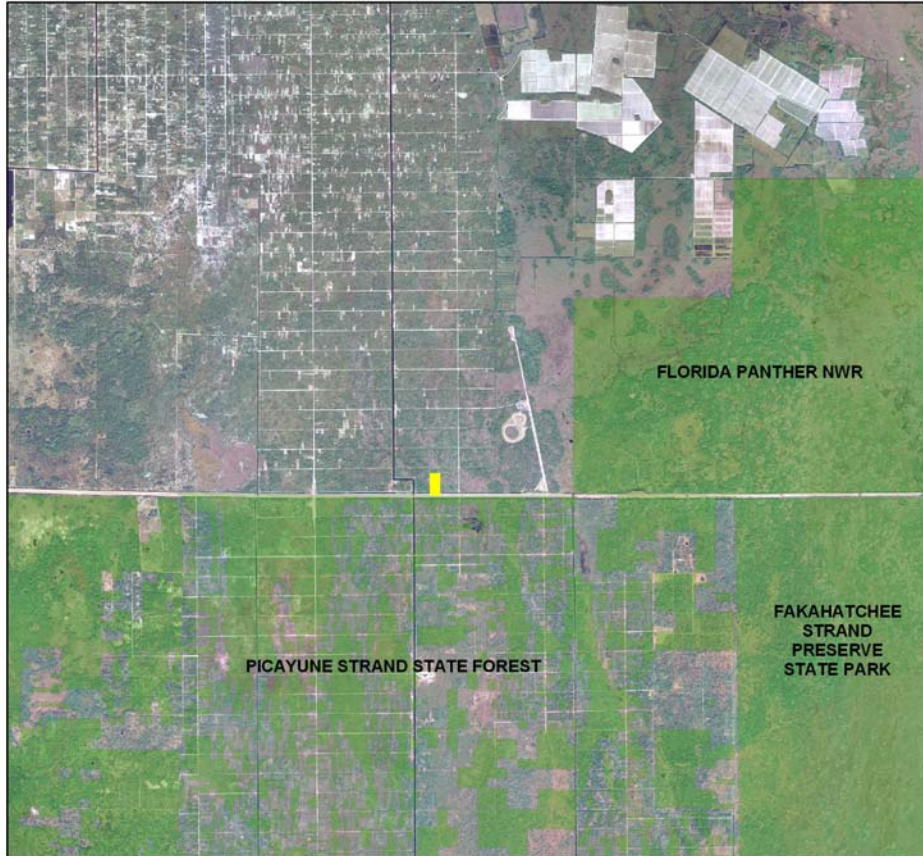


Cycle 4 Property maps

Conservation Collier Ayra Aerial Map



Legend - Ayra

-  Conservation Land
-  Ayra

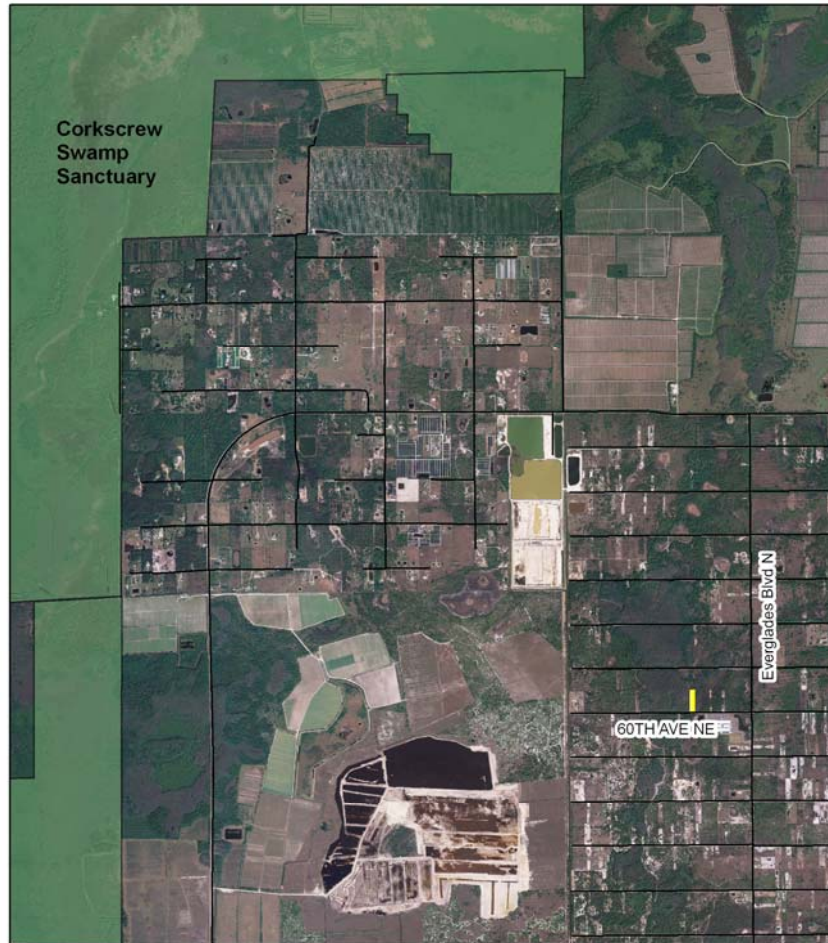
0 6,750 13,500 Feet

Folio Number: 41560241009

Data Source: Parcels and 2005 aeriels - Collier County Property Appraiser
Created By: GIS \ CDES \ Environmental Services
G:\Conservation Collier\ ISCR\ 4thcycle\Ayra2.mxd
G:\Conservation Collier 2002\ ISCR\ 4thcycle\Ayra2.jpg
Date: 6.22.06



Conservation Collier Oetting Properties Location Map

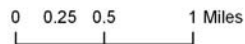


Legend

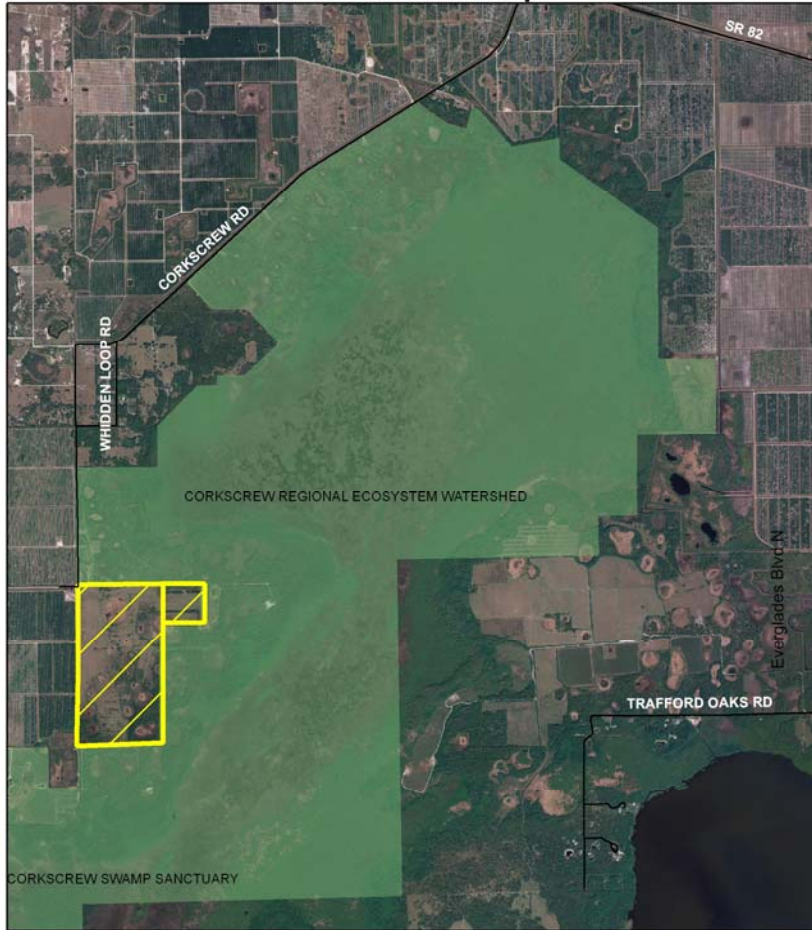
- Collier County Roads
- Conservation Land
- Oetting Parcels

Folio Numbers: 38847040004, 38847080006

Data Source: Parcels and 2005 Aerials-Collier County Property Appraiser
Created by: CDES / Environmental Services
G:\Conservation Collier\CSR\4th Cycle\Oetting2.mxd
G:\Conservation Collier\CSR\4th Cycle\Oetting2.jpg
Date: 1-26-06 CS



Conservation Collier Starnes Properties Aerial Location Map

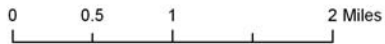


Legend

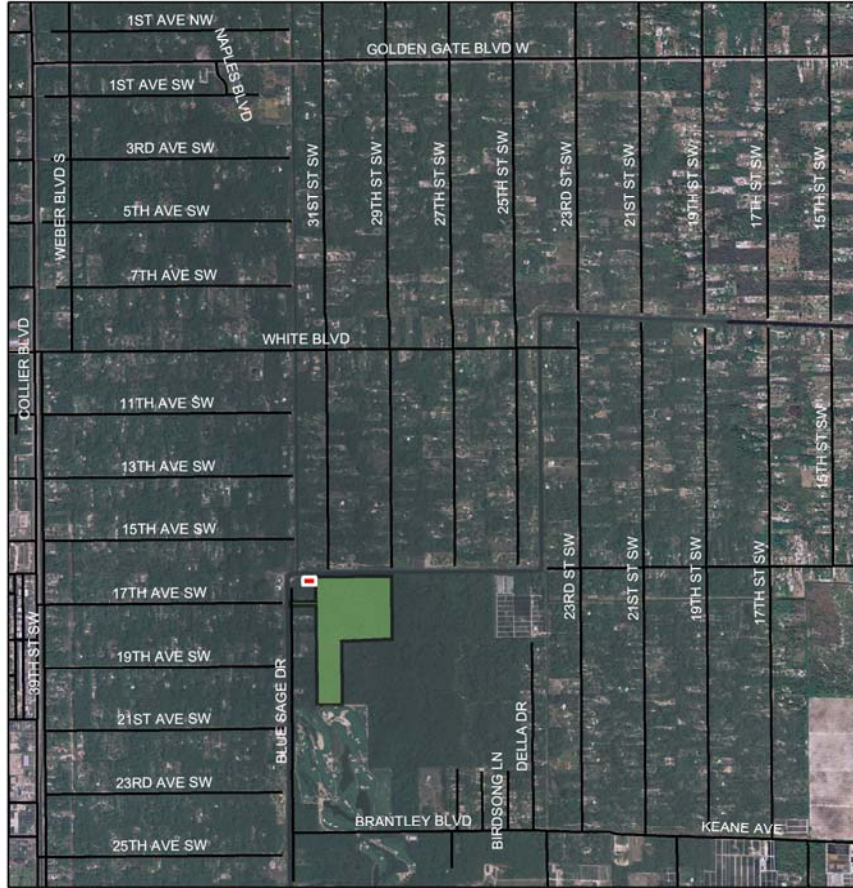
-  Conservation Land
-  Starnes Properties

Folio Numbers: 00053080006 & 00053080200

Data Source: 2005 Aerials & Parcels-Collier County Property Appraiser
Conservation Lands-Florida Natural Areas Inventory
Created by: CDES / Environmental Services / CS
G:\Conservation\Collier\CSR\4th Cycle\Starnes1.mxd and jpg
Date: 5-1-06 CS



Conservation Collier Kirby Property Surrounding Lands Aerial Map



0 1,000 2,000 4,000 Feet

Legend

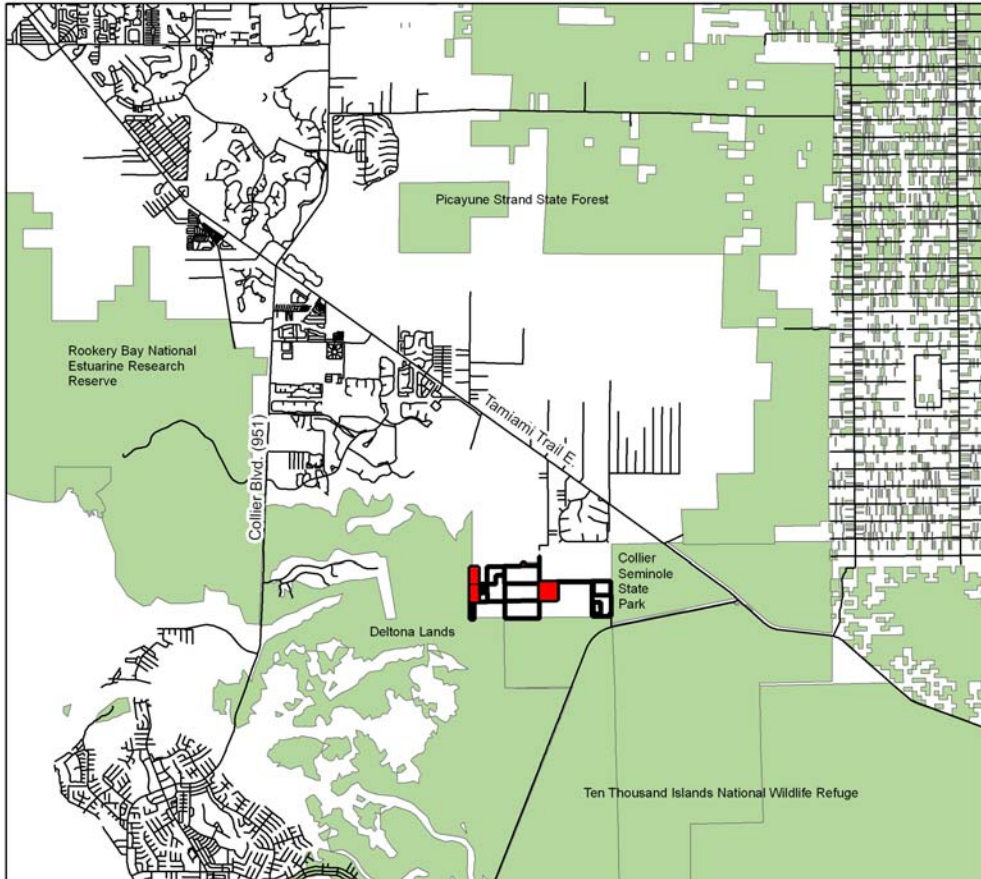
- Kirby Parcel- Folio # 61730880005
- Conservation Collier School Board Property

Section 24 Township 49 Range 26

Data Source: Aerial and Parcels Collier County Property Appraiser
Created By: GIS / CDES / Environmental Services / CS
G: ConservationCollier/ICSR/Cycle 4/Kirby2.mxd and jpg
Date: 5/26/06



Conservation Collier McIlvane Marsh Rookery Bay Partnership Project Location Map



Legend

- Conservation Lands
- McIlvane Marsh Nominated Parcels
- McIlvane Marsh Current Applications



Data Source: Parcels-Collier County Property Appraiser
Conservation Lands-Florida Natural Areas Inventory
Created by: CDES/Environmental Services/CS
G:\Conservation Collier\RC\SR\4R_CycleMMA_locationmap.mxd
G:\Conservation Collier\RC\SR\4R_CycleMMA_locationmap.gpg
May 2006

