

**BENEFITS OF CRUSHED SHELL**

- NATURAL, INDIGENOUS MATERIAL THAT IS LOCALLY PRODUCED
- PERVIOUS MATERIAL
- GOOD ALTERNATIVE MATERIAL FOR SOD, WHICH IS NOT ALLOWED
- COMPACTS DOWN TO A FIRM, STABLE SURFACE, UNLIKE GRAVEL WHICH REMAINS LOOSE
- DOESN'T FLOAT IN A HEAVY RAIN
- SHELL AREAS TO BE NON-IRRIGATED, EXCEPT FOR DRIP OR MICRO-SPRAY TO ACCENT PLANTS. NON-IRRIGATED AREA WILL REDUCE WATER CONSUMPTION (APPROX. 20-25% OF TOTAL AREA OF MEDIANS)
- REPLACEMENT COSTS ARE LESS THAN MULCH, AS IT ONLY NEEDS TO BE REPLACED EVERY 4-5 YEARS INSTEAD OF EVERY 2 YEARS FOR MULCH
- PROVIDES VISUAL RELIEF FROM MULCH BEDS
- DESIGN FEATURE AND SCULPTURAL ELEMENT
- REFLECTS OUR REGIONAL COASTAL LANDSCAPE CHARACTER



COLONIAL BLVD (CR884), LEE COUNTY  
CRUSHED SHELL USED AT NOSES OF MEDIANS FROM CLEVELAND AVE TO MIDPOINT BRIDGE



CRUSHED SHELL DETAIL



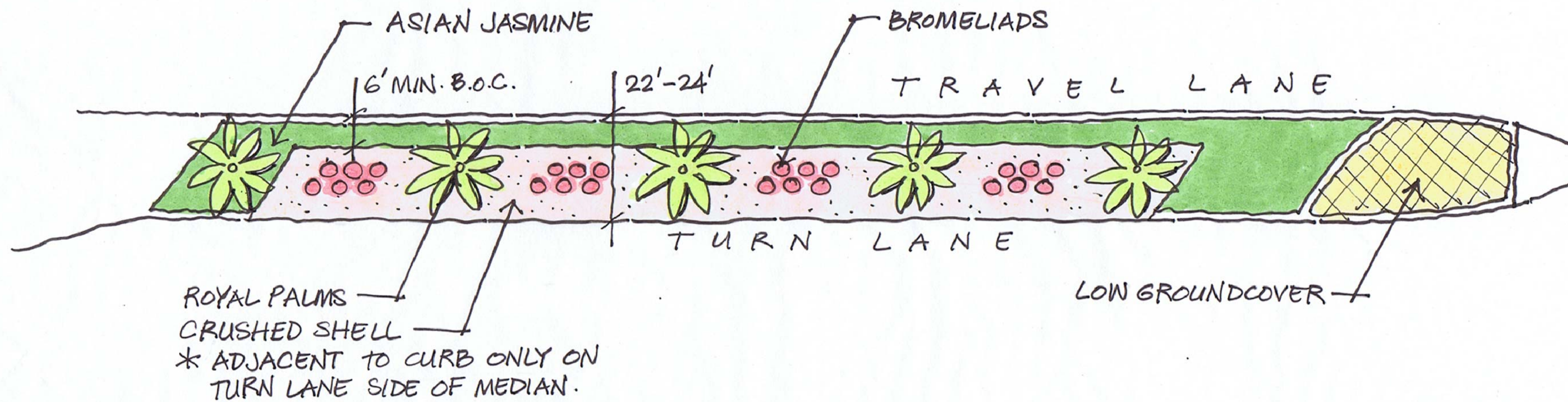
CRUSHED SHELL, DRIVEWAY APPLICATION



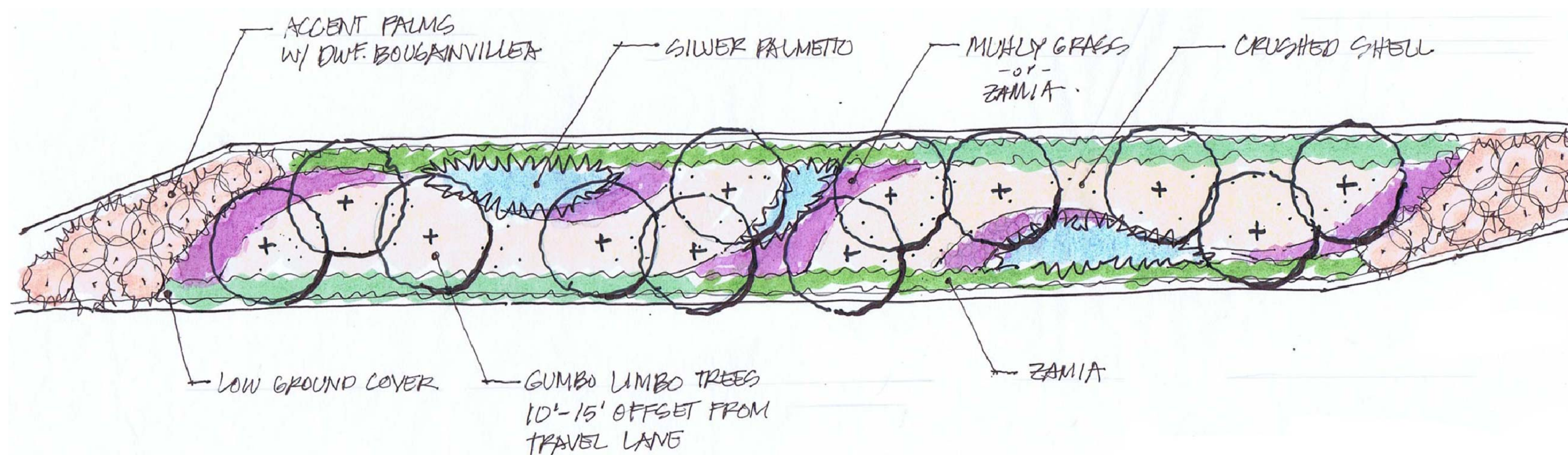
CRUSHED SHELL IN LANDSCAPE, NAPLES BOTANICAL GARDEN



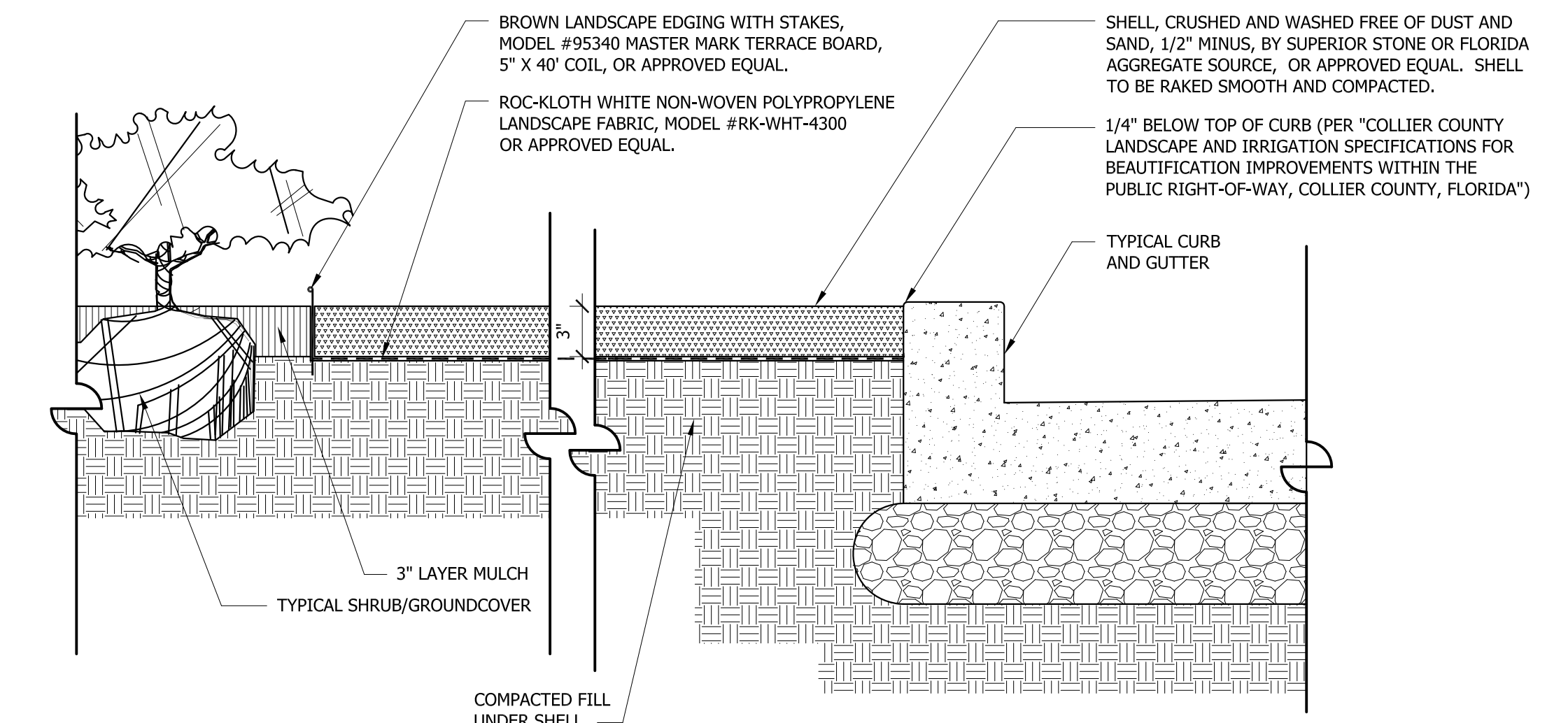
CRUSHED SHELL IN LANDSCAPE AND ADJACENT TO ENTRY DRIVE, NAPLES BOTANICAL GARDEN



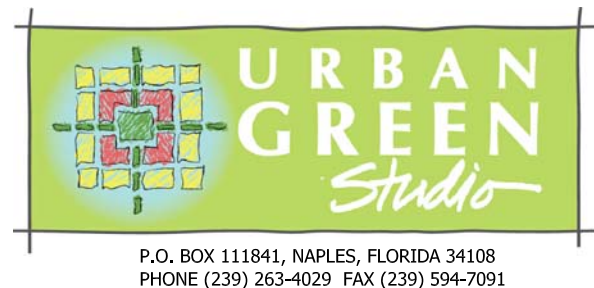
CRUSHED SHELL TREATMENT TYPE 'A' - PLAN  
1" = 20'



CRUSHED SHELL TREATMENT TYPE 'C' - PLAN  
1" = 20'



CRUSHED SHELL TREATMENT AT CURBING - SECTION  
1 1/2" = 1'-0"



IN COORDINATION WITH:  
JAMES C. ABNEY & ASSOCIATES  
2984 44TH STREET SW  
NAPLES, FL 34110  
PHONE (239) 304-8451

PREPARED FOR:  
COLLIER COUNTY BOARD OF COUNTY COMMISSIONERS  
AND THE RADIO ROAD EAST MSTU ADVISORY COMMITTEE  
3301 E. TAMiami TRAIL  
NAPLES, FL 34112  
PHONE (239) 252-8097

**RADIO ROAD EAST**  
NAPLES, FLORIDA

REV	DATE	DESCRIPTION

SCALE:	PER DETAIL
DATE:	JUNE 2011
PROJECT #:	

INTERNAL REVIEW  
CRUSHED SHELL DETAILS  
30% PLANS

DAYNA L. FENDRICK, RLA #0001224

SHEET #  
**LP501**