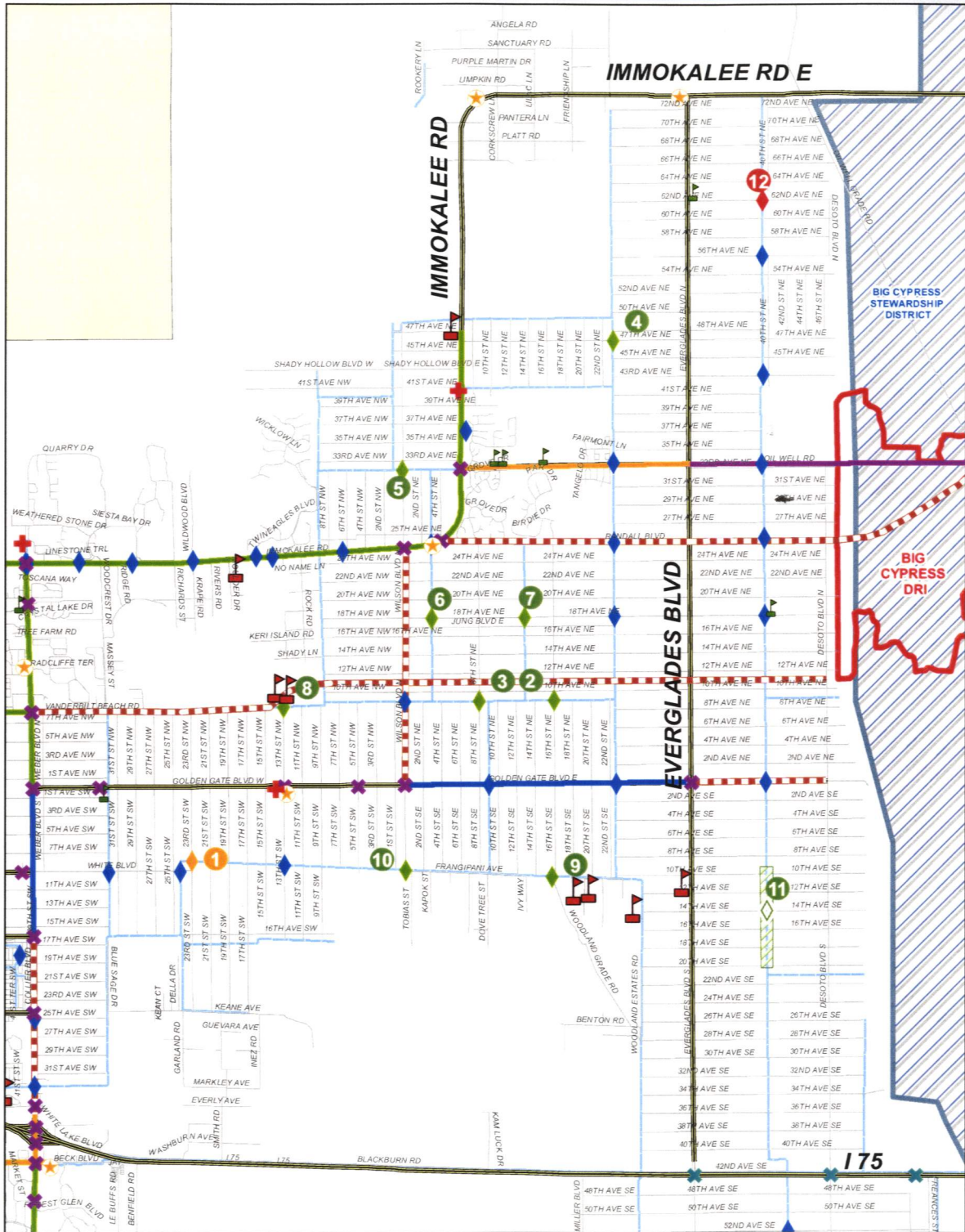


APPENDIX A

MAP

East of C.R. 951 Bridge Study



Legend

- Future Schools
- Schools
- Signalized Intersections
- Interchange Location at I75 (Under Study)
- Existing Bridges
- Potential Bridges
- Bridge 1 - Future Approved Bridge as per the Growth Management Plan Golden Gate Area Master Plan - Policy 6.1.1 and Policy 7.3.1
- Bridge 12 - Propose Bridge By - Big Corkscrew Island Fire District (BCIFD)
- Big Cypress DRI
- AVE Maria Stewardship Community District
- BIG Cypress Stewardship District
- BridgeStudyArea
- FIVE YEAR PLAN**
- Under Construction
- 2008
- 2010
- 2011
- Design Project
- Right of Way Project



Collier County
Transportation Services Division

July 14, 2008

APPENDIX B

AERIALS OF BRIDGE LOCATIONS

GGEstates - BRIDGE STUDY



BRIDGE 1

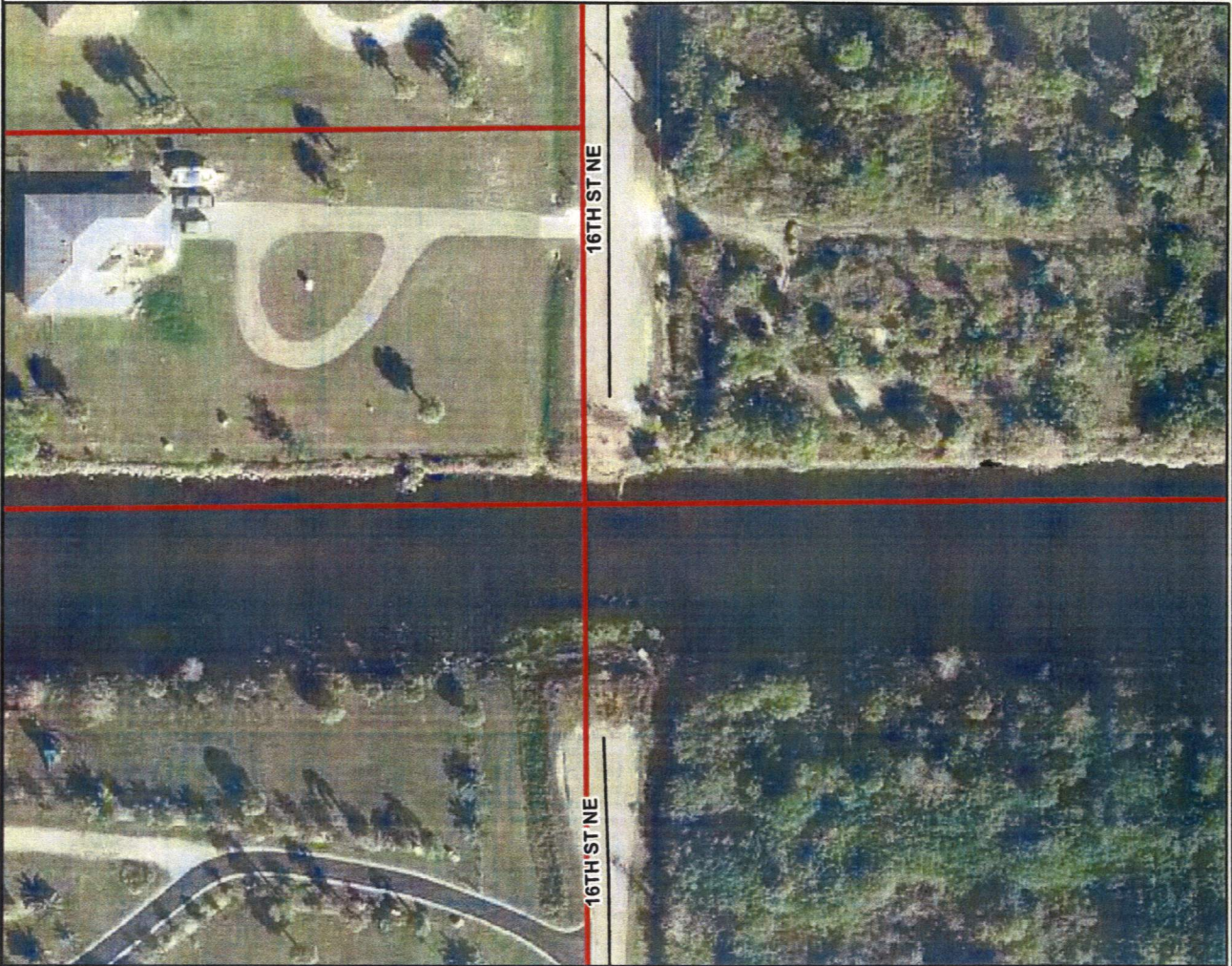


BRIDGE 1
Location: 23rd St. SW
1 blk N of White Blvd
Approx Canal Width: 110 ft

0 50 100 200 Feet

TSD_plot 08/06/08

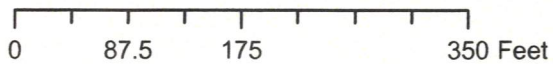
GGEstates - BRIDGE STUDY



BRIDGE 2



BRIDGE 2
Location: 16TH ST NE
south of 10th Ave NE
Approx Canal Width: 100 FT



TSD_plot 08/06/08

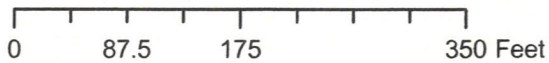
GGEstates - BRIDGE STUDY



BRIDGE 3

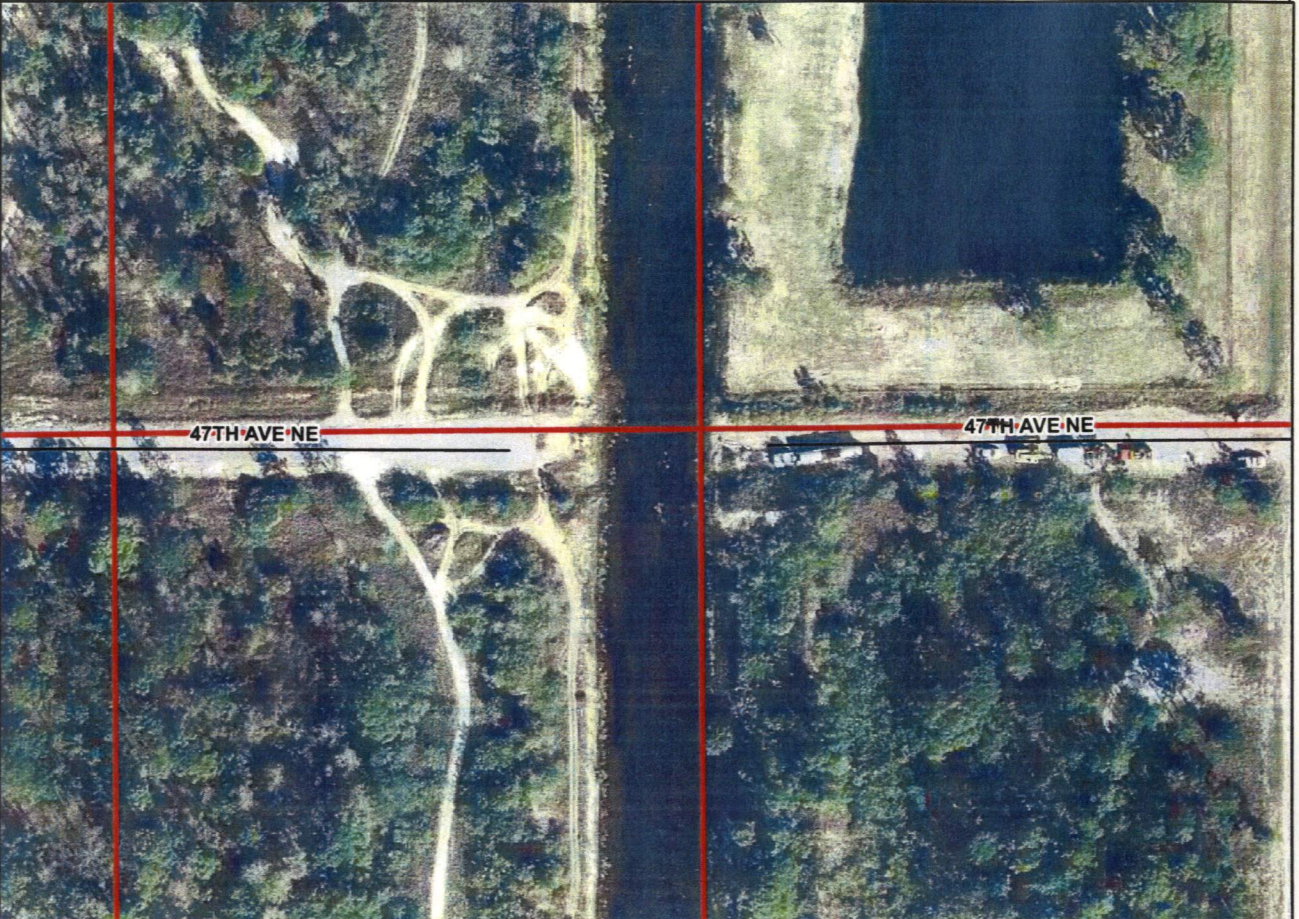


BRIDGE 3
Location: 8TH ST NE
south of 10th Ave NE
Approx Canal Width: 80 FT



TSD_scale 1000 plot 08/06/08

GGEstates - BRIDGE STUDY



BRIDGE 4



BRIDGE 4
Location: 47th Avenue NE
Approx Canal Width: 110 FT

0 90 180 360 Feet

TSD_scale 1000 plot 08/06/08

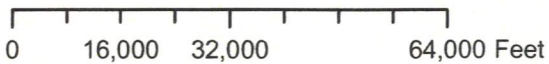
GGEstates - BRIDGE STUDY



BRIDGE 5



BRIDGE 5
Location: Wilson Blvd
south of 33rd Ave NE
Approx Canal Width: 55-60 ft



TSD_scale 1000 plot 08/06/08

GGEstates - BRIDGE STUDY



BRIDGE 6



BRIDGE 6
Location: 18TH AVE NE
(between Wilson Ave N & 8th St NE)
Approx Canal Width: 60 FT

0 95 190 380 Feet

TSD_scale 1000 plot 08/06/08

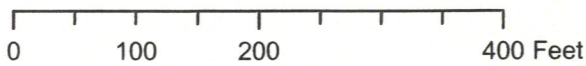
GGEstates - BRIDGE STUDY



BRIDGE 7



BRIDGE 7
Location: 18TH AVE NE
(Between 8th St NE and 16th St NE)
Approx Canal Width: 140 FT



TSD_scale 1000 plot 08/06/08

GGEstates - BRIDGE STUDY



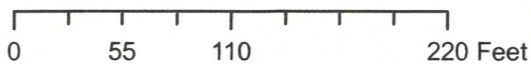
BRIDGE 8

BRIDGE 8

Location: North end of 13TH ST NW
into proposed VBR

Approx Canal Width: 60 FT

Exist PRIVATE BRIDGE



TSD_scale 1000 plot 08/06/08

GGEstates - BRIDGE STUDY



BRIDGE 9



BRIDGE 9
Location: 16TH ST SE
at the south end
Approx Canal Width: 25 FT

0 85 170 340 Feet

TSD_scale 1000 plot 08/06/08

GGEstates - BRIDGE STUDY



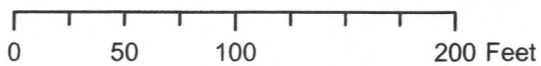
BRIDGE 10



BRIDGE 10

Location: Wilson Blvd S

Approx Canal Width: 130 FT



TSD_scale 1000 plot 08/06/08

**CG ESTATES - BRIDGE 11 STUDY
10TH Ave SE to 20TH Ave SE**



BRIDGE 11_A - 10TH AVE SE



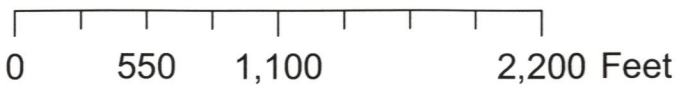
BRIDGE 11_B - 12TH AVE SE

BRIDGE 11_C - 14TH AVE SE

BRIDGE 11_D - 16TH AVE SE

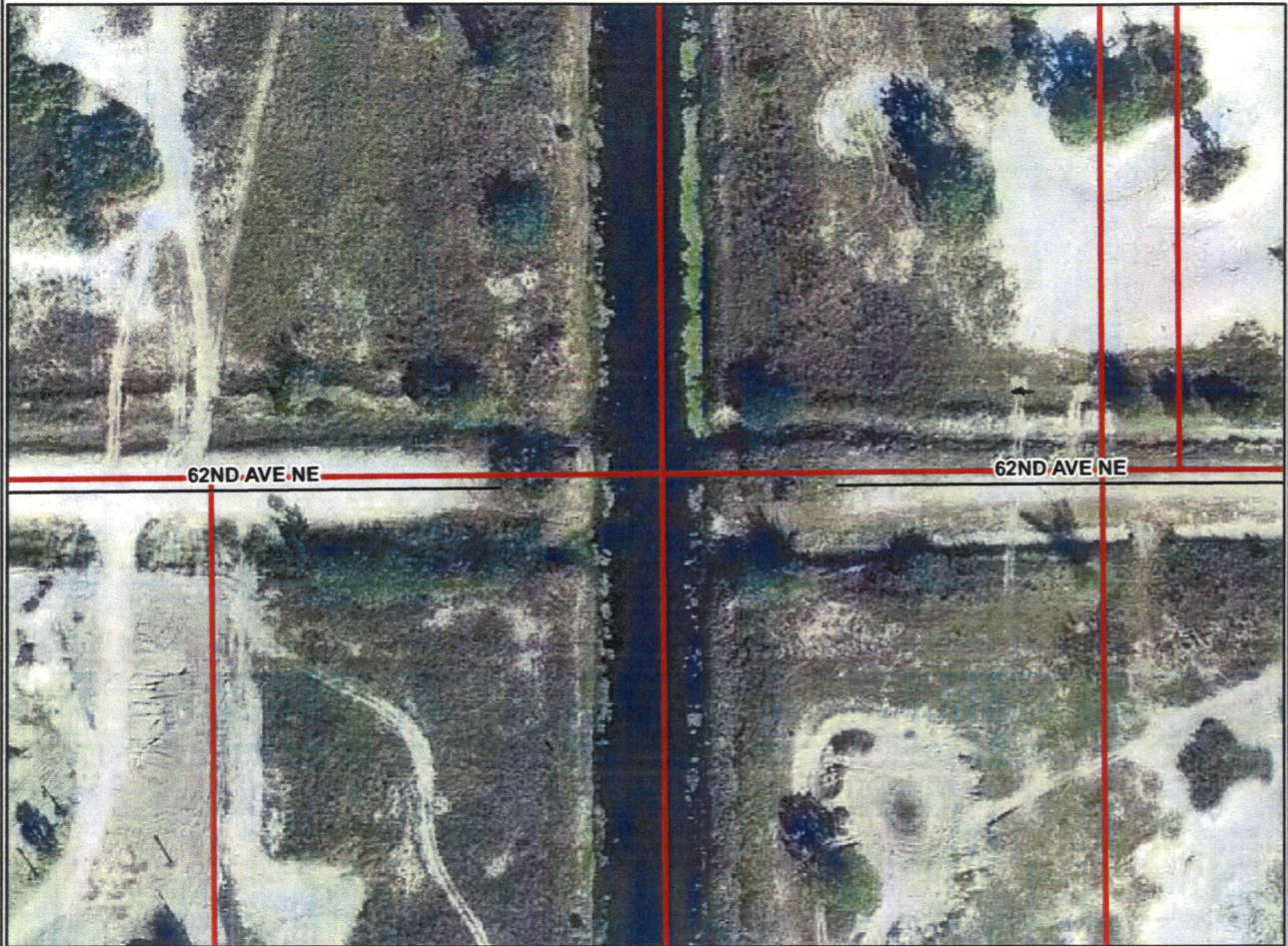
BRIDGE 11_E - 18TH AVE SE

BRIDGE 11_F - 20TH AVE SE



2008_56_BRIDGE 11x17
10TH AVE SE to 20TH AVE SE
scale 6000
TSD 06Aug09_(rayM)

GGEstates - BRIDGE STUDY



BRIDGE 12



0 50 100 200 Feet

TSD _scale 1000 plot 08/06/08

BRIDGE 12
Location: 62th Ave NE
(west of 40th St NE)
Approx Canal Width: 70 FT

APPENDIX C

RANKING MATRICES

FINAL RANKINGS

Public was asked the most important reason to add new bridges to the Estates

Number 1 reason was for better evacuation and emergency response times for fire, ems, sheriff

Number 2 reason was for better access/mobility

Number 3 reason was for better services for scholls, parks and utilities

	EMERGENCY RESPONSE	MOBILITY	SERVICE EFFICIENCY	PUBLIC
Rank	<i>(fire, ems, sheriff, forestry service)</i>	<i>(transportation)</i>	<i>(school district, parks, public utilities, big cypress basin)</i>	<i>(rankings provided at PIP 7/2/08)</i>
#1	Bridge 2 - response time reduced 2 minutes BCIFD	Bridge 3	Bridge 5	Bridge 2
#2	Bridge 3 - response time reduced by 2 minutes BCIFD	Bridge 2	Bridge 8	Bridge 3
#3	Bridge 4 - response time reduced by 2 minutes BCIFD	Bridge 5	Bridge 6	Bridge 6
#4	Bridge 12 - critical for wildfires for BCIFD/Forestry	Bridge 11	Bridge 4	Bridge 7
#5	Bridges 9 Forestry, EMS, GGFD	Bridges 4	Bridge 7	Bridge 8
#6	Bridge 6 - Sheriff	Bridge 7	Bridge 3	Bridge 9
#7	Bridges 7 (Sheriff) & 11 Sheriff/Forestry/GGFD	Bridge 6	Bridge 2	Bridge 4
#8	Bridges 8 & 10 - response time reduced by 3.5 minutes for Bridge 8 by GGFD (pending VBR extension and connectivity to the north)	Bridge 8	Bridge 9	Bridge 12
#9	Bridge 5 - response time reduced by 2 minutes BCIFD	Bridge 9	Bridge 12	Bridge 5
#10		Bridges 10	Bridge 10	Bridge 11
#11		Bridge 12	Bridge 11	Bridge 10

BRIDGE STUDY EVALUATION MATRIX- EMERGENCY RESPONSE

	NEW BCIFD Ranking	NEW GGFD Ranking	Emergency Services	Forestry Division	Sheriff	TOTALS
Bridge 2	4	3	2	11	1	21
Bridge 3	5	4	2	11	1	23
Bridge 4	1	7	1	11	11	31
Bridge 5	3	9	9	11	11	43
Bridge 6	6	10	7	11	1	35
Bridge 7	7	11	7	11	1	37
Bridge 8	11	1	4	11	11	38
Bridge 9	11	5	4	3	11	34
Bridge 10	11	6	6	4	11	38
Bridge 11	11	2	11	2	11	37
Bridge 12	2	8	11	1	11	33
***NOTE: Bridge 1 not ranked--- already approved location/ Ranked #1 for Sheriff						
	Rankings--- 1- is best; 12 is least important					
7/2/2008	Bridge 2	21				
	Bridge 3	23				
	Bridge 4	31				
	Bridge 12	33				
	Bridges 9	34				
	Bridge 6	35				
	Bridge 7 & 11	37				
	Bridge 8 & 10	38				
	Bridge 5	43				
ems ranking received 7/2/08						

BRIDGE STUDY EVALUATION MATRIX- MOBILITY

	Current Connectivity	Future Connect	Conn to Sign Inter	Chng in Trip Length	TOTALS
Bridge 2	2	1	1	3	7
Bridge 3	2	1	1	1	5
Bridge 4	1	3	11	4	19
Bridge 5	4	4	4	4	16
Bridge 6	6	8	4	4	22
Bridge 7	5	7	4	4	20
Bridge 8	11	5	3	11	30
Bridge 9	11	10	4	11	36
Bridge 10	11	11	4	11	37
Bridge 11	7	6	4	2	19
Bridge 12	8	9	11	10	38
*** NOTE: Bridge 1 was not ranked -- already approved location					
	Rankings--- 1- is best; 12 is least important				
	Bridge3	5			
	Bridge 2	7			
	Bridge 5	16			
	Bridge 11	19			
	Bridge 4	19			
	Bridge 7	20			
	Bridge 6	22			
	Bridge 8	30			
	Bridge 9	36			
	Bridge 10	37			
	Bridges 12	38			

BRIDGE STUDY EVALUATION MATRIX-SERVICE EFFICIENCY

	New School Rating	Public Utilities	Parks	Big Cypress Basin	TOTALS
Bridge 2	7	11	5	5	28
Bridge 3	7	11	4	4	26
Bridge 4	2	4	10	1	17
Bridge 5	1	3	1	1	6
Bridge 6	3	2	6	5	16
Bridge 7	3	5	7	9	24
Bridge 8	5	1	1	8	15
Bridge 9	6	11	1	11	29
Bridge 10	11	11	8	10	40
Bridge 11	9	11	11	11	42
Bridge12	11	11	9	5	36
***** NOTE: Bridge 1 not ranked - already an approved bridge to be built					
	Rankings--- 1- is best; 11 is least important				
	Bridge 5	6			
	Bridge 8	15			
	Bridge 6	16			
	Bridge 4	17			
	Bridge 7	24			
	Bridge 3	26			
	Bridge 2	28			
	Bridge 9	29			
	Bridge 12	36			
	Bridge 10	40			
	Bridge 11	42			

APPENDIX D

PUBLIC COMMENTS

EAST OF CR 951
BRIDGE STUDY

COMMENTS/CONCERNS TRACKING

A		C		F	
1	Contact Person	Address/Zip Code		Comments / Concerns	
2					
3	Nicole Ryan	Conservancy of SW FL 2289 Piccadilly Circus, Naples FL 34112		Supports improving roadway network with new bridges - less environmental impact than new roadways; supports traffic calming;	
4	Mike Deruntz			Doesn't want bridge 11 to be located at 14th Avenue due to congestion on Everglades at 10th ; concerns about noise if bridge is on 14th ; need additional evacuation to the south for people on Desoto	
5	Dorothy Jo and Steven	14th Ave			
6	Dr. Sparks Lunney	PO Box 9647, Naples, FL 34101		health impacts; increase traffic volume; air quality	
7	Bob Harlan			doesn't like location of bridge 5; increased traffic on Wilson; criminal activity will increase with open roadway; have Bonita Beach Road extend to Immokalee Road	
8	Victoria Nicklos			doesn't like bridge 5; likes dead end streets; wants kids to be safe	
9	Sylvia Dillon	2861 Wilson Blvd N		doesn't like bridge 5; school buses speed; no thru trucks	
10	Mark Burchin			Bridge 11 should be on 10th Ave; coordiant bridge design to work with SFWM weir on 20th Ave	
11	margaret kemp	2179 47th Ave NE		no bridges; increased traffic, criminal traffic	
12	beardsleys	2360 19th St SW		use military type temporary bridges; address e nvironmental consequences	
13	Michael Frye	4165 27th Ave NE		increased traffic; safety for children	
14	Judy Frye	4165 27th Ave NE		speeding	
15	D Lucas			loss of property and increased property taxes	
16	Mary Jo Weicichowski	4925 16th Ave SE		Bridge 11 should be further south- should be at 16th not 14th	
17	Tony Wojciechowski	4925 16th Aven SE		Needs to be a bridge south of GGB - desoto is blocked	
18	Robert Falcone	331 Golden Gate Blvd W		need access to and from I75 for evacuation	
19	C Hessa	31368th Ave SE		need access to and from I75 for evacuation; bridge 11 needs to be further south - maybe at 16th	
20	Dennis Vassey	4398 N. Longshore Way		water retention/detention; bridges will not be at 48feet long and 8-10feet high	
21	Jeff Stivers	691 22nd St. NE		bridges should only be 1 lane and gated for emergency use only	
22	Kim Ellis	530 Third St. SW		All bridges are need for all reasons - the more the better	
23	Cassie Gones	610 18th Avenue NE		traffic concerns; noise	
24	Martin Miller PE	920 16th Street SE		no concerns - bridges are needed to improved EMS/fire rescue and reduce insurance rates.	
25	Joe Rivera	550 8th St. NE		need speed controls	
26	Lourdes Piloto	3987 67 Ave NE		can't wait for them to be built	
27	Mr. Piloto	3987 62 Ave NE		lets do it	

EAST OF CR 951
BRIDGE STUDY

COMMENTS/CONCERNS TRACKING

	A	C	F
28	Karen Hokanson	2740 Wilson Blvd N	crime; decrease in property values as no longer on a dead end street; gate and lock bridges for emergency use only
29	Aaron Hokanson	2740 Wilson Blvd N	roads are too narrow, they will collide on bridges, safety for children
30	Pat Hesser	3136 8th Ave SE	open overpasses to I75; we need bridges
31	A. Rustay	3371 14th Ave SE	re-evaluate bridge 11. move to 10th or 12
32	Patrick Lson	540 12 Ave NW	only 5 bridges needed - the rest are not
33	David LeFort	184 Wilson Blvd S.	must connect overpasses to I75; widen roads up to proposed bridges; one lane bridges for ems
34	Doug Rankin	761 17th St. SW	plans looks great
35	John Weaver		need access to and from I75 for evacuation
36	Daniel Pellicane	1745 47th Ave NE	truck traffic and speeding
37	Judy Bradshaw	3833 14th Ave SE	bridge 11 should be moved to 10th or 12th Avenue; road improvements are more important than bridges; new I75 interchange is more important; speeding; crime
38	Robert Kidder	226 16th St. NE	crime; loss of property value; speeding
39	Bob Izzo	3670 14th Ave SE	bridge 11 should be at 16th Ave or at 10th Ave; keep bridges closed for emergency personnel only
40	David Farmer	240 17th St. SW	increased access for criminal theft; need more access to future VBR
41	Jams and Linda Fox	3011 Wilson Blvd N	Bridge 5 is unwanted, unnecessary and un acceptable;
42			
43			
44	Glenda Beardsly		Any bridge location would be good. They are all needed
45	Evelyn Almadova		Need a bridge in vicinity 10th- 20th Ave SE
46	L M Johnson		bridges aren't needed - residents in Estates knew what they were moving into - leave it alone
47	Carol Ann Ritter	920 47th Aven NE	Bridge 4 ok for emergency use but not truck traffic
48	Nina Goins	2980 18th Ave SE	prevent houses from being burned and saving lives should be priority
49	Anonymous		Bridge 1 will increase traffic on street
50	Steve Peffers		Bridges are needed in our neighborhood. Build either bridges 2 and 3 or 6 and 7 but not all 4
51	Anonymous		We didn't move out here for a transportation grid
52	Joseph Hamberger	3461 Wilson Blvd N	Bridge 5 will add traffic to area...make bridge a one lane for emergency services only
53	Anonymous		bridges will add too much traffic causing safety issues for children
54	Jim Farlow	2020 Randall Blvd	roads should be upgraded to accommodate increased traffic; truck traffic should be restricted
55	Anonymous		Speeding
56	Karen Acquard	441 24th Ave NE	Canals should be bridged
57	Trudy Bentley Rech	1491 25 St. SW	Bridge 6 is critical for fire/life safety, #7 close on its heels
58	Nancy Frye	361 14th St NE	Bridge 9 should be built by developer of woodland Estates; bridge 10 doesn't benefit anyone
59	James Kuhar	1281 20th Avenue NE	speeding is a concern

EAST OF CR 951
BRIDGE STUDY

COMMENTS/CONCERNS TRACKING

	A	C	F
60	Patricia Humphries	441 20th Ave NW	Bridge 10 will increase truck traffic from mines; Bridge 5 is useful for residents in that area
61	Tad Bartareau	1390 21 St. SW	Bridge 1 - concerns about traffic on White
62	Jeannine Bunch	4060 8th Ave SE	a bridge is needed between I75 and GGB
63	Anthony Wojciechowski	4925 18th Ave SE	Should look in to connecting 16th Aven across quarry.
64	Jose Abin	4040 16th Aven SE	don't want traffic on my street
65	Iris	1051 DeSoto	don't delay the process; bridges needed for better access in case of disaster
66	Marvin Steffen	3880 10th Aven SE	don't move Bridge 11
67	Judy Bradshawa	3833 14th Ave SE	Bridge isn't necessary on 14th - should be moved to 18th or 20th
68	Luke Marshall	4065 14th Aven SE	353-1427

APPENDIX E

PUBLIC INFORMATION PLAN


**Postcard sent in June for July 2 Public Information Meeting—
approximately 1500 sent**

EAST OF C.R. 951 BRIDGE STUDY PUBLIC MEETING

Collier County Transportation Planning Department is holding a public information meeting to gain your input regarding potential new bridge locations in the Golden Gate Estates area.

**Oakridge Middle School
14975 Collier Blvd.
Tuesday, July 1, 2008
7 p. m.**

You are receiving this notice because a proposed bridge could be built at the end of your street. Join us for a presentation about the study and view displays. We look forward to receiving your input.

To view the potential bridge locations, visit 
www.colliergov.net/bridgestudy

*Call Lisa Koehler, Project Manager at 252-8192
or e-mail her at LisaKoehler@colliergov.net with questions.*

**Postcard sent in July after Public Information Meeting—
approximately 1100 sent**

NOTICE OF BRIDGE STUDY AREA

As part of the East of CR 951 Infrastructure and Services Horizon Study the Collier County Transportation Planning Department is conducting a bridge study to identify, evaluate and prioritize various alternatives that address emergency response, disaster evacuation, access and mobility within Golden Gate Estates east of CR 951.

You are receiving this notice because a proposed bridge could be built at the end of your street. We are looking to add a bridge somewhere between 10th Avenue SE and 20th Avenue SE bridging the canal between Everglades Blvd. and DeSoto Blvd. We are currently in the planning stages to provide future bridges as part of the East of CR 951 Horizon Study. We are preparing our final report for the East of CR 951 Infrastructure and Services Horizon Study Committee and the Board of County Commissioners showing these roadways as a study area for a future bridge location. Please contact me with any questions or comments by Friday August 1, 2008. For more information about the bridge study, please visit www.colliergov.net/bridgestudy

*Project Manager Lisa Koehler
LisaKoehler@colliergov.net
239-252-8192*



Transportation Planning

East of CR 951 Bridge Study

EAST OF C.R. 951 BRIDGE STUDY

A study is in process to determine locations where bridges may be built in Golden Gate Estates to connect roads that will improve traffic mobility, improve services, allow for faster response times for emergency services and improve evacuation routes. Twelve sites have been suggested so far to the East of 951 Committee to be considered for potential bridges following input from agencies such as Collier County EMS, Corkscrew Island Fire District, Golden Gate Fire District, Collier County Parks and Recreation Department, Collier County Public Utilities Division, Collier County School District and the Collier County Sheriff's Office.

The Transportation Services Division's 5-Year Work Program and the Metropolitan Planning Organization's Long Range Transportation Plan recognize the need for bridge maintenance as well as new bridge construction. Locations deemed as potential sites for bridges at this point went through an evaluation and ranking process based on the following criteria:

- o Existing and future connectivity;
- o Change in response time for emergency services;
- o Impact on roadway network Level of Service (LOS);
- o Connection to planned or existing signalized intersections;
- o Change in trip length;
- o Impact to the roadway being connected to the bridge;
- o Access to existing and planned school sites; and
- o School bus efficiency.

After all rankings are completed by the outside agencies and the public, Transportation Planning Department staff will compile and evaluate the data, provide cost analysis as well as review the impact on the community.

A final report and recommendation will be made to the East of CR 951 Committee in August and then it will be included in the East of CR 951 Infrastructure and Services Horizon Study as well as provided to the Board of County Commissioners in September so they can adopt a priority list.

Click [here](#) to view map with proposed bridges.

If you have questions, please call Lisa Koehler at 252-8192 or email her at lisakoehler@colliergov.net

Updated July 25, 2008



Collier County Government

Transportation Services Division
Transportation Engineering and
Construction Management Department
2885 S. Horseshoe Drive
Naples, FL 34104

Contact: **Connie Deane**
Community Liaison
239-252-8192 or 8365

June 23, 2008

FOR IMMEDIATE RELEASE

PUBLIC INFORMATION MEETING

The public is invited to attend a brief presentation and review the displays for Collier County Transportation Planning Department's East of County Road (CR) 951 Bridge Study

Tuesday, July 1, 2008

7 p.m.

Oakridge Middle School
14975 Collier Boulevard

Naples

- ◆ Staff members are conducting this bridge study to investigate possible north-south and east-west roadway connections to improve evacuation routes, decrease emergency response times for fire, emergency services and law enforcement, help improve traffic mobility and improve services to the area.
- ◆ After the brief presentation, staff will be available to answer any questions. All are welcome to review the study displays and talk with staff members.

Members of the Board of County Commissioners may be in attendance at this public information meeting.

For more information, call Principal Planner Lisa Koehler at the Collier County Transportation Services Division at 239-252-8192 or e-mail LisaKoehler@colliergov.net.

If you are a person with a disability who needs any accommodation in order to participate in this proceeding, you are entitled, at no cost to you, to the provision of certain assistance. Please contact the Collier County Facilities Management Department located at 3301 East Tamiami Trail, Naples, Florida, 34112, (239) 252-8380; assisted listening devices for the hearing impaired are available in the County Commissioners' Office.

###



Collier County Government

Transportation Services Division
Transportation Engineering and
Construction Management Department
2885 S. Horseshoe Drive
Naples, FL 34104

Contact: **Connie Deane**
Community Liaison
239-252-8192 or 8365

June 25, 2008

FOR IMMEDIATE RELEASE

East of 951 Bridge Study Requests Residents' and Visitors' Input at Public Information Meeting on July 1

A study is in process to determine locations where bridges may be built in Golden Gate Estates to connect roads that will improve traffic mobility, improve services, allow for faster response times for emergency services and improve evacuation routes. Twelve sites have been suggested so far to the East of 951 Committee to be considered for potential bridges following input from agencies such as Collier County EMS, Corkscrew Island Fire District, Golden Gate Fire District, Collier County Parks and Recreation Department, Collier County Public Utilities Division, Collier County School District and the Collier County Sheriff's Office. To gather further information a public information meeting will be held on Tuesday, July 1 at 7 p.m. at Oakridge Middle School, 14975 Collier Boulevard., Naples. There will be a brief presentation at 7 p.m. followed by the opportunity to review displays and discuss potential bridge sites with staff members. Residents and visitors are welcome to attend and encouraged to participate.

The Transportation Services Division's 5-Year Work Program and the Metropolitan Planning Organization's Long Range Transportation Plan recognize the need for bridge maintenance as well as new bridge construction. Locations deemed as potential sites for bridges at this point went through an evaluation and ranking process based on the following criteria:

- Existing and future connectivity;
- Change in response time for emergency services;
- Impact on roadway network Level of Service (LOS);
- Connection to planned or existing signalized intersections;
- Change in trip length;
- Impact to the roadway being connected to the bridge;
- Access to existing and planned school sites;
- School bus efficiency; and
- Cost.

After all rankings are completed by the outside agencies and the public, Transportation Planning Department staff will compile and evaluate the data, provide cost analysis as well as review the impact on the community.

District 5 Commissioner Jim Coletta encourages community members to attend the meeting on July 1 in order to have a say in this important study.

“We appreciate the input we have received thus far from emergency service responders and other agencies,” said Coletta. “Since so much of Golden Gate Estates includes dead end roads that stop at canals, there is a great need to bridge some of those canals to provide better emergency services as well as evacuation routes in case of fires like we saw only last month that created such havoc and devastation for so many.”

A final report and recommendation will be made to the East of 951 Committee in August and then it will be provided to the Board of County Commissioners in September so they can adopt a priority list.

Members of the Board of County Commissioners may be in attendance at this informational public workshop.

If you are a person with a disability who needs any accommodation in order to participate in this proceeding, you are entitled, at no cost to you, to the provision of certain assistance. Please contact the Collier County Facilities Management Department located at 3301 East Tamiami Trail, Naples, Florida, 34112, (239) 252-8380; assisted listening devices for the hearing impaired are available in the County Commissioners’ Office.

For further information please contact Transportation Planning Department Project Manager Lisa Koehler at 239-252-8192.

###

[News Media: If you have any questions, please contact Community Liaison Connie Deane at conniedeane@colliergov.net or either 239-252-8192 or 8365; or Public Information Specialist Eileen O’Grady at 213-5801 or eileenogrady@colliergov.net]

naplesnews.com

Bridges not yet crossed

By KENNETH COSTELLO

Wednesday, July 9, 2008

Plans for 12 connector bridges in the Golden Gate Estates received mixed response, July 1, as nearly 150 people attended the East of 951 Bridge Study meeting at Oakridge Middle School. Objections ranged from lifestyle impacts to air quality concerns, while other residents urged officials to move ahead with the bridges as quickly as possible.

"This is the bridge that should be built first," Golden Gate Estates Area Civic Association member Peggy Whitbeck said of the connector proposed for the south end of Wilson Boulevard and Frangipani Avenue. That bridge is part of a corridor proposal that would connect Wilson south to Landfill Road.

The meeting was led by members of the Collier County Transportation Planning Department as part of the East of CR 951 Infrastructure and Services Horizon Study, which has been holding meetings over the last two years to secure public input on community service needs such as police, fire, EMT's, roads, bridges, schools, libraries and parks.

The bridges are proposed for 23rd Street SW over the Golden Gate Main Canal, the north end and the south of 16th Street NE, the west end of 45th Avenue NE, the north end of Wilson Boulevard, west end of Jung Boulevard, bridge connecting 16th Avenue NW to 16th Avenue NE, the north end of 13th Street NW, the south end of Wilson Boulevard, bridge over the main canal on 14th Avenue SE and a bridge proposed by the Big Corkscrew Fire & Rescue District at 62nd Avenue NE.

According to Nick Casalanguida, director of transportation planning, the purpose of the meeting was to obtain public feedback from residents. The 12 locations have already been evaluated by the Collier County Sheriff's Office, Division of Forestry, Emergency Medical Services, the school district, fire districts, public utilities, parks and recreation and Big Cypress Basin.

According to Casalanguida, there has never been a road grid in the Estates, primarily due to the number of canals. Most of the roads dead-end at the canal.

"First responders have said that response times are longer due to the lack of bridges," he said. "We would like to build multiple bridges, so one street will not have to bear the burden of increased traffic."

Proponents said the May 29 wildfire in the Estates highlighted the need for multiple connections to improve emergency response access.

Others, such as Jeff Stivers, also were opposed to building multiple bridges.

"We chose to live on a dead end street. We did not want through traffic. We wanted less traffic and less crime," he said. "I knew the limitations of the traffic system when I moved here, people's lack of planning to get a quart of milk or a loaf of bread should not require the county to build more bridges."

Stivers agreed that police and fire need better access and recommended that single lane bridges be built and gated for police and emergency access only.

Gates for emergency access only and speed bumps to slow traffic were discussed when the last major connector bridge was built on 13th Street SW in 2002. Both ideas were ultimately turned down. Emergency