



### Multi-Use Asphalt Trail

- An approximately 4-mile-long, 12-foot-wide multi-use asphalt trail at the west side of Vanderbilt Drive from Bonita Beach Road to 111<sup>th</sup> Avenue North.
- A variety of amenities could be provided along the trail such as: exercise equipment, rest stations with shelter, directional/interpretive signs, mile markers, trail map and rules, information kiosk, among others.
- Collier County is soliciting public input for desired amenities.

ITEM	Price Range	
	Approx. Minimum	Approx. Maximum
10ft /12ft Asphalt Trail (\$28-\$32/LF)	\$590,000	\$675,000
Potential Cost with Optional Amenities*	\$913,310	\$1,333,100
<b>Total*</b>	<b>\$1,503,310</b>	<b>\$2,008,100</b>

\*Does not include cost for the Sidewalk Back Connection to St. John's Church and Naples Park Elementary School.



**Bicycle Lanes**  
(Depicted in Red)

- Bicycle lanes will be added from 111<sup>th</sup> Avenue North and connect to the existing bicycle lanes north of Wiggins Pass Road.
- Existing road will be widened on east side to accommodate the proposed bicycle lanes.
- Pavement markings will need to be milled and restriped.

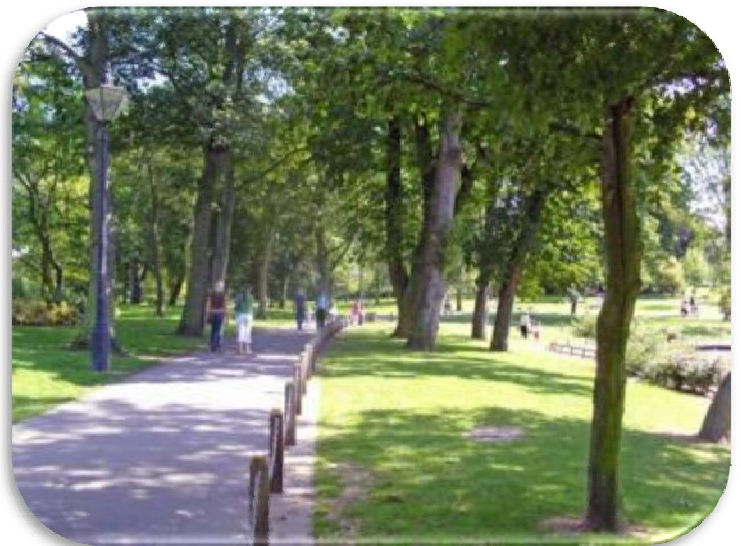
ITEM	Price Range	
	Approx. Minimum	Approx. Maximum
Bike Lane Striping (Roadway and Striping Improvements)	\$168,000	\$225,000
<b>Total</b>	<b>\$168,000</b>	<b>\$225,000</b>



### Gap Sidewalk to Elementary School

- Construction of sidewalk along the north side of 111<sup>th</sup> Avenue to eliminate gap in the sidewalk of approximately 800 feet.
- Provides safe access to the proposed trail from existing Naples Park Elementary School.

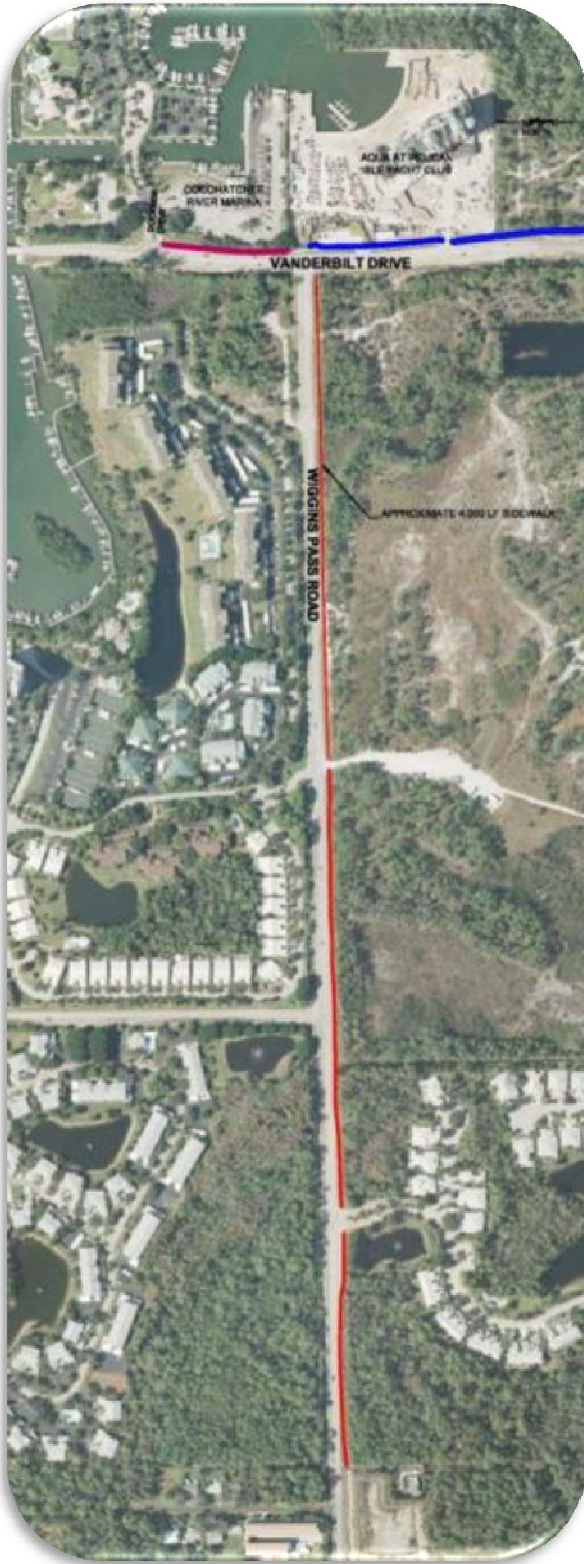
ITEM	Price Range	
	Approx. Minimum	Approx. Maximum
6" Thick Concrete Sidewalk (Includes regrading of existing ditch and minor landscape restoration)	\$14,400	\$17,600
<b>Total</b>	<b>\$14,400</b>	<b>\$17,600</b>



### Linear Park

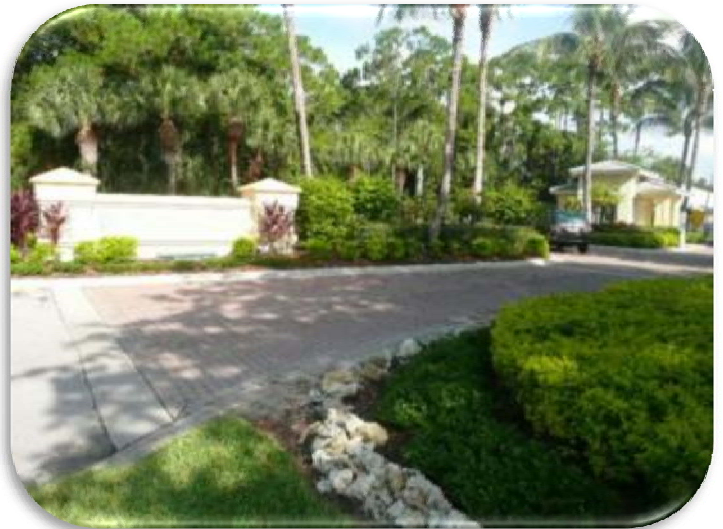
- Existing infrastructure reduces construction cost.
- Existing pedestrian underpass eliminates the need for midblock crossing.
- Opportunity to add significant amenities to the project at a minimum cost.

ITEM	Price Range	
	Approx. Minimum	Approx. Maximum
Parking and Sidewalks	\$36,000	\$42,000
Playground Equipment	\$25,000	\$45,000
Landscaping (trees, shrubs, groundcover, sod, mulch)	\$18,000	\$24,000
Miscellaneous Amenities	\$20,000	\$30,000
<b>Total</b>	<b>\$99,000</b>	<b>\$141,000</b>



### **Sidewalk Extension on North Side of Wiggins Pass Road**

- Connects US41 to proposed trail.
- Provides sidewalks on both sides of Wiggins Pass Road.
- Requires significant grading improvements.



ITEM	Price Range	
	Approx. Minimum	Approx. Maximum
6" Thick Concrete Sidewalk (Includes regrading of existing ditch and minor landscape restoration)	\$72,000	\$88,000
<b>Total</b>	<b>\$72,000</b>	<b>\$88,000</b>