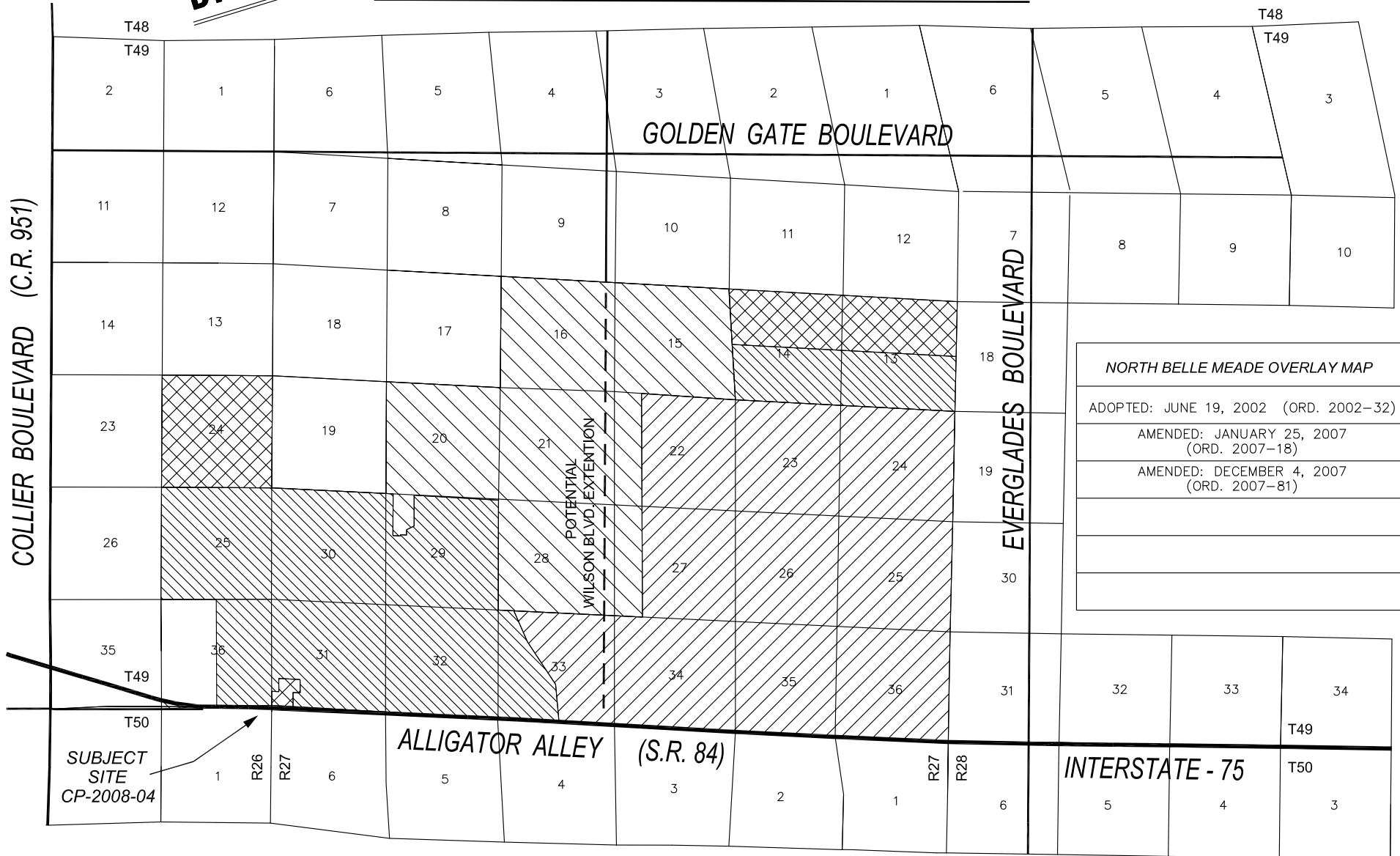
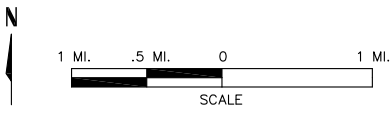


**DRAFT**

# NORTH BELLE MEADE OVERLAY MAP



<b>NORTH BELLE MEADE OVERLAY MAP</b>
ADOPTED: JUNE 19, 2002 (ORD. 2002-32)
AMENDED: JANUARY 25, 2007 (ORD. 2007-18)
AMENDED: DECEMBER 4, 2007 (ORD. 2007-81)



LEGEND			
	SENDING		NEUTRAL
	NRPA SENDING		RECEIVING

PREPARED BY: GRAPHICS AND TECHNICAL SUPPORT SECTION  
 COMMUNITY DEVELOPMENT AND ENVIRONMENTAL SERVICES DIVISION  
 DATE: 8/2009 FILE: CP-2008-4A.DWG

**NOTE:** THIS MAP CANNOT BE INTERPRETED WITHOUT THE GOALS, OBJECTIVES AND POLICIES OF THE COLLIER COUNTY GROWTH MANAGEMENT PLAN.