

R 25 E R 26 E R 27 E R 28 E R 29 E R 30 E R 31 E R 32 E R 33 E R 34 E

2006 - 2016 FUTURE LAND USE MAP Collier County Florida

DETAILS OF THE RLSA OVERLAY AREA ARE SHOWN ON THE FUTURE LAND USE MAP TITLED: "COLLIER COUNTY RURAL & AGRICULTURAL AREA ASSESSMENT STEWARDSHIP OVERLAY MAP"

URBAN DESIGNATION

MIXED USE DISTRICT

- URBAN RESIDENTIAL SUBDISTRICT
- RESIDENTIAL DENSITY BANDS
- URBAN COASTAL FRINGE SUBDISTRICT
- URBAN RESIDENTIAL FRINGE SUBDISTRICT

BUSINESS PARK SUBDISTRICT
OFFICE AND INFILL COMMERCIAL SUBDISTRICT
PUD NEIGHBORHOOD VILLAGE CENTER SUBDISTRICT
RESIDENTIAL MIXED USE NEIGHBORHOOD SUBDISTRICT

ORANGE BLOSSOM MIXED USE SUBDISTRICT
VANDERBILT BEACH / COLLIER BLVD. COMMERCIAL SUBDISTRICT
HENDERSON CREEK MIXED USE SUBDISTRICT

RESEARCH AND TECHNOLOGY PARK SUBDISTRICT

BUCKLEY MIXED USE SUBDISTRICT

COMMERCIAL MIXED USE SUBDISTRICT

DAVIS BOULEVARD / COUNTY BARN ROAD MIXED USE SUBDISTRICT
LIVINGSTON ROAD / RADIO ROAD COMMERCIAL INFILL SUBDISTRICT
VANDERBILT BEACH ROAD NEIGHBORHOOD COMMERCIAL SUBDISTRICT
COLLIER BOULEVARD COMMUNITY FACILITY SUBDISTRICT

INDUSTRIAL DISTRICT

BUSINESS PARK SUBDISTRICT
RESEARCH AND TECHNOLOGY PARK SUBDISTRICT

COMMERCIAL DISTRICT

MIXED USE ACTIVITY CENTER SUBDISTRICT
INTERCHANGE ACTIVITY CENTER SUBDISTRICT
LIVINGSTON / PINE RIDGE COMMERCIAL INFILL SUBDISTRICT

BUSINESS PARK SUBDISTRICT
RESEARCH AND TECHNOLOGY PARK SUBDISTRICT

LIVINGSTON ROAD / EATONWOOD LANE COMMERCIAL INFILL SUBDISTRICT
LIVINGSTON ROAD COMMERCIAL INFILL SUBDISTRICT
COMMERCIAL MIXED USE SUBDISTRICT

LIVINGSTON ROAD / VETERAN'S MEMORIAL BLVD. COMMERCIAL INFILL SUBDISTRICT
GOODLETTE / PINE RIDGE COMMERCIAL INFILL SUBDISTRICT
ORANGE BLOSSOM / AIRPORT CROSSROADS COMMERCIAL SUBDISTRICT

AGRICULTURAL / RURAL DESIGNATION

AGRICULTURAL/RURAL MIXED USE DISTRICT

RURAL COMMERCIAL SUBDISTRICT
CORKSCREW ISLAND NEIGHBORHOOD COMMERCIAL SUBDISTRICT

RURAL FRINGE MIXED USE DISTRICT

RECEIVING LANDS
SENDING LANDS
NEUTRAL LANDS

ESTATES DESIGNATION

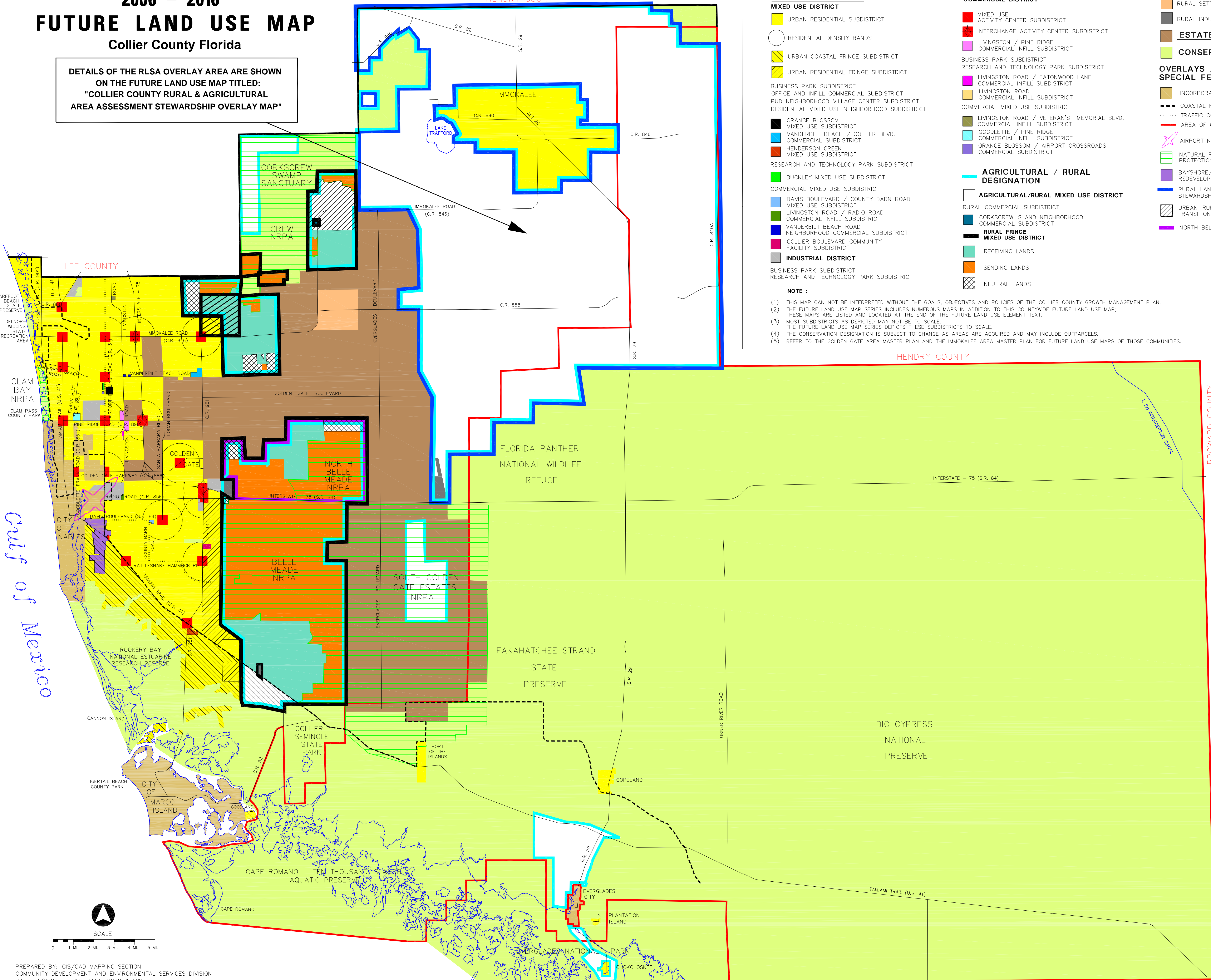
CONSERVATION DESIGNATION

OVERLAYS AND SPECIAL FEATURES

- INCORPORATED AREAS
- COASTAL HIGH HAZARD AREA
- TRAFFIC CONGESTION BOUNDARY
- AREA OF CRITICAL STATE CONCERN OVERLAY
- AIRPORT NOISE AREA OVERLAY
- NATURAL RESOURCE PROTECTION AREA (NRPA) OVERLAY
- BAYSHORE/GATEWAY TRIANGLE REDEVELOPMENT OVERLAY
- RURAL LANDS STEWARDSHIP AREA OVERLAY
- URBAN-RURAL FRINGE TRANSITION ZONE OVERLAY
- NORTH BELLE MEADE OVERLAY

NOTE :

- (1) THIS MAP CAN NOT BE INTERPRETED WITHOUT THE GOALS, OBJECTIVES AND POLICIES OF THE COLLIER COUNTY GROWTH MANAGEMENT PLAN.
- (2) THE FUTURE LAND USE MAP SERIES INCLUDES NUMEROUS MAPS IN ADDITION TO THIS COUNTYWIDE FUTURE LAND USE MAP; THESE MAPS ARE LISTED AND LOCATED AT THE END OF THE FUTURE LAND USE ELEMENT TEXT.
- (3) MOST SUBDISTRICTS AS DEPICTED MAY NOT BE TO SCALE. THE FUTURE LAND USE MAP SERIES DEPICTS THESE SUBDISTRICTS TO SCALE.
- (4) THE CONSERVATION DESIGNATION IS SUBJECT TO CHANGE AS AREAS ARE ACQUIRED AND MAY INCLUDE OUTPARCELS.
- (5) REFER TO THE GOLDEN GATE AREA MASTER PLAN AND THE IMMOKALEE AREA MASTER PLAN FOR FUTURE LAND USE MAPS OF THOSE COMMUNITIES.



FUTURE LAND USE MAP	
ADOPTED	- JANUARY, 1989
AMENDED	- JANUARY, 1990
AMENDED	- FEBRUARY, 1991
AMENDED	- MAY, 1992
AMENDED	- MAY, 1993
AMENDED	- APRIL, 1994
AMENDED	- OCTOBER, 1997
AMENDED	- JANUARY, 1998
AMENDED	- FEBRUARY, 1999
AMENDED	- FEBRUARY, 2000
AMENDED	- MAY, 2000
AMENDED	- DECEMBER, 2000
AMENDED	- MARCH, 2001
AMENDED	- MAY 14, 2002 (Ord. No. 2002-24)
AMENDED	- JUNE 19, 2002 (ORD. NO. 2002-32)
AMENDED	- OCTOBER 22, 2002 (Ord. No. 2002-54)
AMENDED	- FEBRUARY 11, 2003 (Ord. No. 2003-7)
AMENDED	- SEPTEMBER 9, 2003 (Ord. No. 2003-43)
AMENDED	- SEPTEMBER 10, 2003 (Ord. No. 2003-44)
AMENDED	- DECEMBER 16, 2003 (Ord. No. 2003-67)
AMENDED	- OCTOBER 26, 2004 (Ord. No. 2004-71)
AMENDED	- JUNE 7, 2005 (Ord. No. 2005-25)
AMENDED	- JANUARY 25, 2007 (Ord. No. 2007-18)
AMENDED	- DECEMBER 4, 2007 (Ord. No. 2007-78,79,81)
AMENDED	- OCTOBER 14, 2008 (Ord. No. 2008-57,58,59)



PREPARED BY: GIS/CAD MAPPING SECTION
COMMUNITY DEVELOPMENT AND ENVIRONMENTAL SERVICES DIVISION
DATE: 3/2009 FILE: FLUE-2009-1.DWG

R 25 E R 26 E R 27 E R 28 E R 29 E R 30 E R 31 E R 32 E R 33 E R 34 E

T 46 S
T 47 S
T 48 S
T 49 S
T 50 S
T 51 S
T 52 S
T 53 S

T 46 S
T 47 S
T 48 S
T 49 S
T 50 S
T 51 S
T 52 S
T 53 S