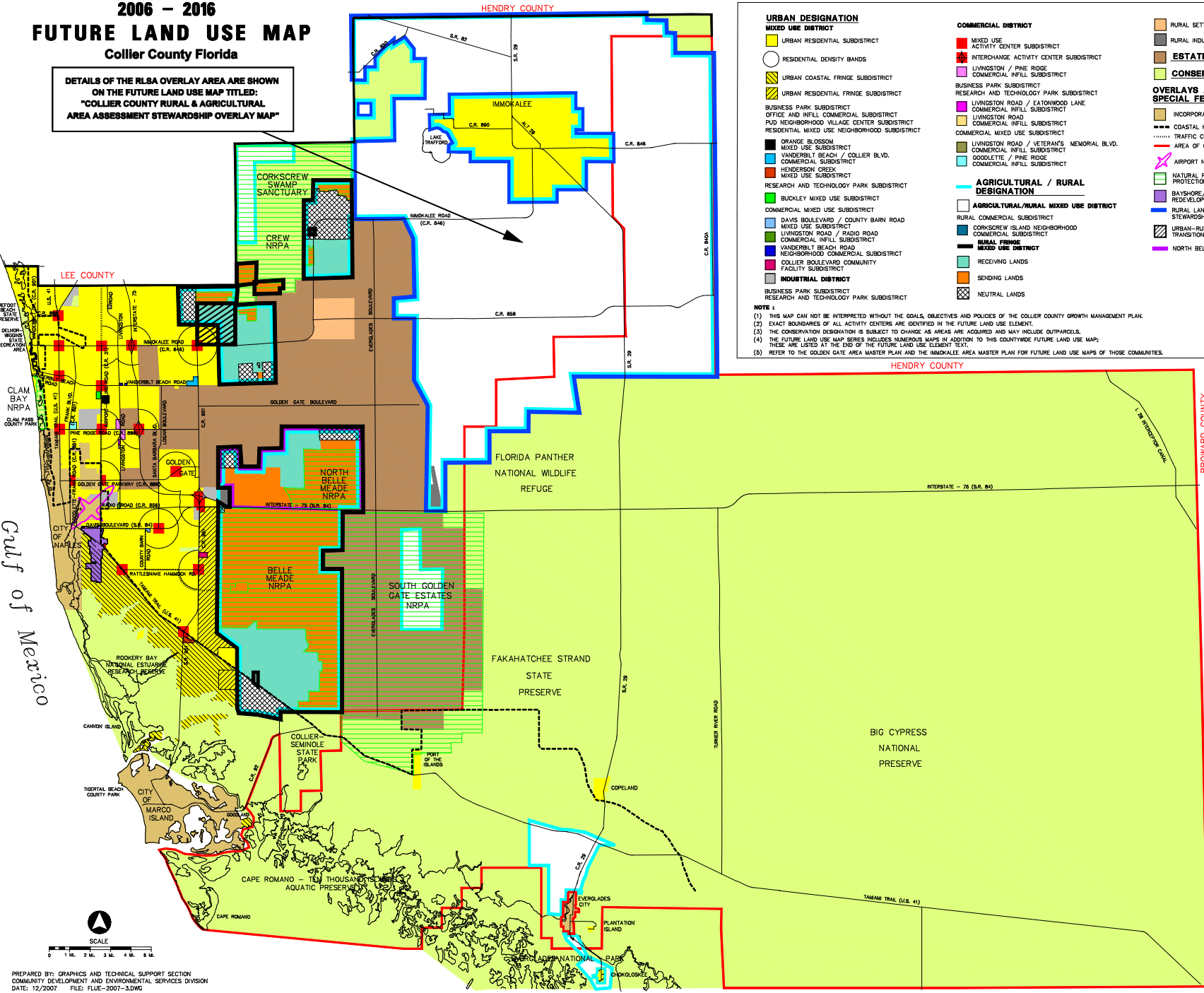


2006 - 2016 FUTURE LAND USE MAP Collier County Florida

DETAILS OF THE RLSA OVERLAY AREA ARE SHOWN ON THE FUTURE LAND USE MAP TITLED: "COLLIER COUNTY RURAL & AGRICULTURAL AREA ASSESSMENT STEWARDSHIP OVERLAY MAP"



PREPARED BY: GRAPHICS AND TECHNICAL SUPPORT SECTION
COMMUNITY DEVELOPMENT AND ENVIRONMENTAL SERVICES DIVISION
DATE: 12/2007 FILE: FLUE-2007-3.DWG

URBAN DESIGNATION

- MIXED USE DISTRICT
 - URBAN RESIDENTIAL SUBDISTRICT
 - RESIDENTIAL DENSITY BANDS
 - URBAN COASTAL FRINGE SUBDISTRICT
 - URBAN RESIDENTIAL FRINGE SUBDISTRICT
- BUSINESS PARK SUBDISTRICT
- OFFICE AND INFILL COMMERCIAL SUBDISTRICT
- PUD NEIGHBORHOOD VILLAGE CENTER SUBDISTRICT
- RESIDENTIAL MIXED USE NEIGHBORHOOD SUBDISTRICT
- ORANGE BLOSSOM MIXED USE SUBDISTRICT
- VANDERBILT BEACH / COLLIER BLVD. COMMERCIAL SUBDISTRICT
- HENDERSON CREEK MIXED USE SUBDISTRICT
- RESEARCH AND TECHNOLOGY PARK SUBDISTRICT
- BUCKLEY MIXED USE SUBDISTRICT
- COMMERCIAL MIXED USE SUBDISTRICT
- DAVIS BOULEVARD / COUNTY BARNY ROAD MIXED USE SUBDISTRICT
- LIVINGSTON ROAD / RADIO ROAD COMMERCIAL INFILL SUBDISTRICT
- VANDERBILT BEACH ROAD NEIGHBORHOOD COMMERCIAL SUBDISTRICT
- COLLIER BOULEVARD COMMUNITY FACILITY SUBDISTRICT
- INDUSTRIAL DISTRICT
 - BUSINESS PARK SUBDISTRICT
 - RESEARCH AND TECHNOLOGY PARK SUBDISTRICT

COMMERCIAL DISTRICT

- MIXED USE
- INTERCHANGE ACTIVITY CENTER SUBDISTRICT
- LIVINGSTON / PINE RIDGE COMMERCIAL INFILL SUBDISTRICT
- BUSINESS PARK SUBDISTRICT
- RESEARCH AND TECHNOLOGY PARK SUBDISTRICT
- LIVINGSTON ROAD / EATONWOOD LANE COMMERCIAL INFILL SUBDISTRICT
- LIVINGSTON ROAD COMMERCIAL INFILL SUBDISTRICT
- GOODLETTE / PINE RIDGE COMMERCIAL MIXED USE SUBDISTRICT
- COMMERCIAL MIXED USE SUBDISTRICT
- LIVINGSTON ROAD / VETERAN'S MEMORIAL BLVD. COMMERCIAL INFILL SUBDISTRICT

AGRICULTURAL / RURAL DESIGNATION

- AGRICULTURAL/RURAL MIXED USE DISTRICT
- RURAL COMMERCIAL SUBDISTRICT
- CORKSCREW ISLAND NEIGHBORHOOD COMMERCIAL SUBDISTRICT
- RECEIVING LANDS
- SENDING LANDS
- NEUTRAL LANDS

ESTATES DESIGNATION

- ESTATES DESIGNATION

CONSERVATION DESIGNATION

- CONSERVATION DESIGNATION

OVERLAYS AND SPECIAL FEATURES

- INCORPORATED AREAS
- COASTAL HIGH HAZARD AREA
- TRAFFIC CONGESTION BOUNDARY
- AREA OF CRITICAL STATE CONCERN
- AIRPORT NOISE AREA
- NATURAL RESOURCE PROTECTION AREA (NRPA)
- BAYSHORE/GATEWAY TRIANGLE REDEVELOPMENT OVERLAY
- RURAL LANDS STEWARDSHIP AREA OVERLAY
- URBAN-RURAL FRINGE TRANSITION ZONE OVERLAY
- NORTH BELLE MEADE OVERLAY

NOTE 1:

- (1) THIS MAP CAN NOT BE INTERPRETED WITHOUT THE GOALS, OBJECTIVES AND POLICIES OF THE COLLIER COUNTY GROWTH MANAGEMENT PLAN.
- (2) EXACT BOUNDARIES OF ALL ACTIVITY CENTERS ARE IDENTIFIED IN THE FUTURE LAND USE ELEMENT.
- (3) THE CONSERVATION DESIGNATION IS SUBJECT TO CHANGE AS AREAS ARE ACQUIRED AND MAY INCLUDE OUTPARCELS.
- (4) THE FUTURE LAND USE MAP SERIES INCLUDES NUMEROUS MAPS IN ADDITION TO THIS COUNTYWIDE FUTURE LAND USE MAP; THESE ARE LISTED AT THE END OF THE FUTURE LAND USE ELEMENT TEXT.
- (5) REFER TO THE GOLDEN GATE AREA MASTER PLAN AND THE IMMOKALEE AREA MASTER PLAN FOR FUTURE LAND USE MAPS OF THOSE COMMUNITIES.

FUTURE LAND USE MAP	
ADOPTED -	JANUARY, 1989
AMENDED -	JANUARY, 1990
AMENDED -	FEBRUARY, 1991
AMENDED -	MAY, 1992
AMENDED -	MAY, 1993
AMENDED -	APRIL, 1994
AMENDED -	OCTOBER, 1997
AMENDED -	JANUARY, 1998
AMENDED -	FEBRUARY, 1999
AMENDED -	FEBRUARY, 2000
AMENDED -	MAY, 2000
AMENDED -	DECEMBER, 2000
AMENDED -	MARCH, 2001
AMENDED -	MAY 14, 2002 (Ord. No. 2002-24)
AMENDED -	JUNE 18, 2002 (Ord. No. 2002-32)
AMENDED -	OCTOBER 22, 2002 (Ord. No. 2002-54)
AMENDED -	FEBRUARY 11, 2003 (Ord. No. 2003-7)
AMENDED -	SEPTEMBER 9, 2003 (Ord. No. 2003-43)
AMENDED -	SEPTEMBER 10, 2003 (Ord. No. 2003-44)
AMENDED -	DECEMBER 16, 2003 (Ord. No. 2003-67)
AMENDED -	OCTOBER 26, 2004 (Ord. No. 2004-71)
AMENDED -	JUNE 7, 2005 (Ord. No. 2005-25)
AMENDED -	JANUARY 25, 2007 (Ord. No. 2007-18)
AMENDED -	DECEMBER 4, 2007 (Ord. No. 2007-78,78.81)

