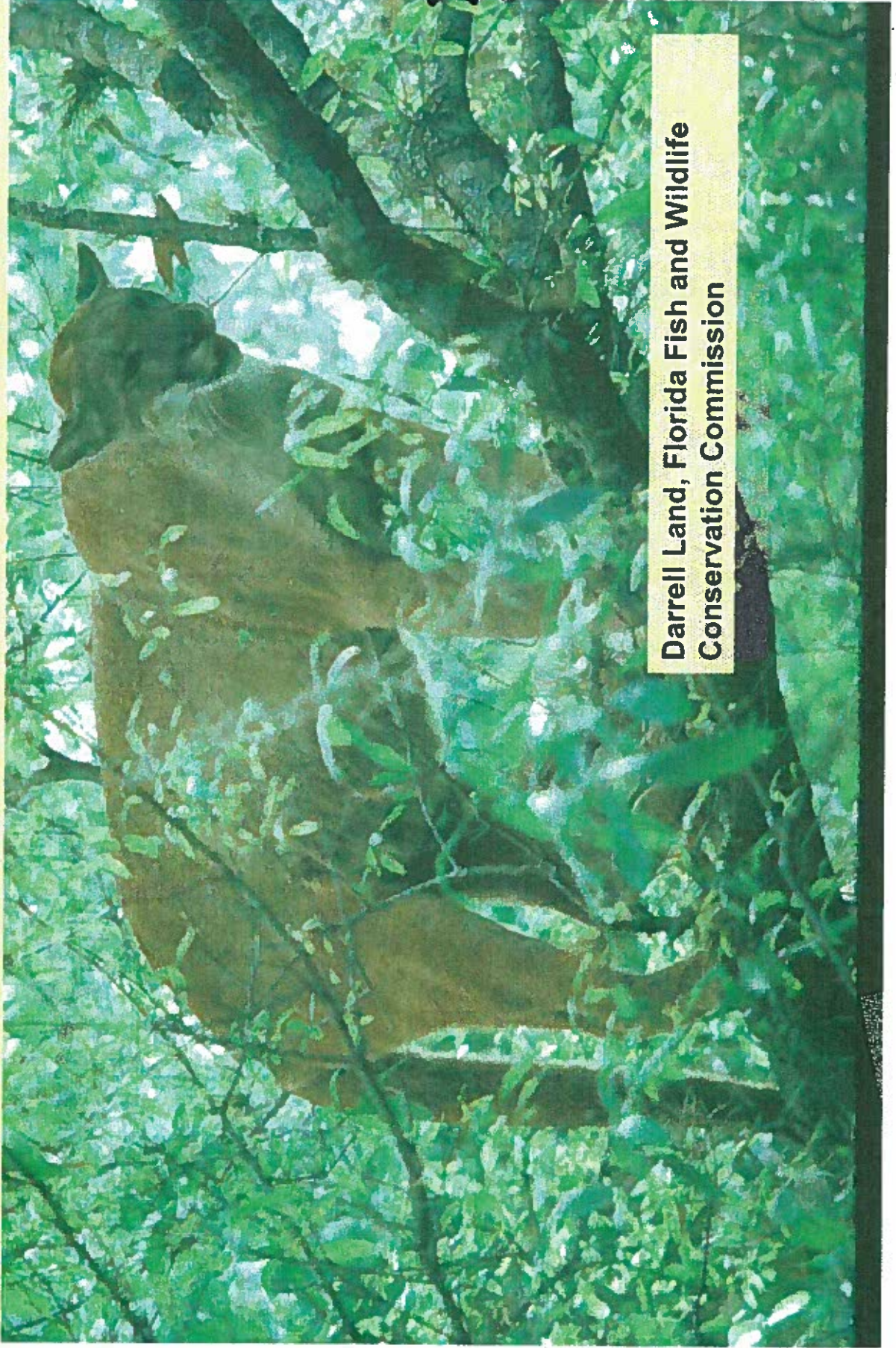


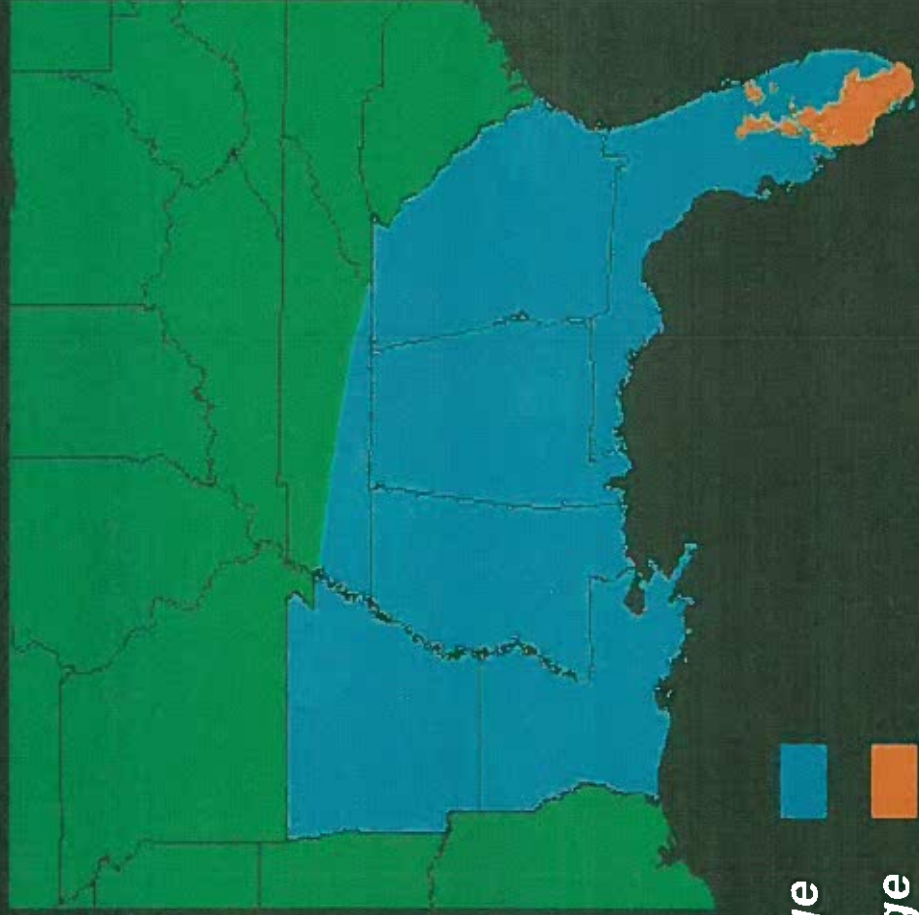
**Rural Lands Stewardship – An Opportunity for
Enhancing Florida Panther Conservation**



**Darrell Land, Florida Fish and Wildlife
Conservation Commission**

Appendix Z

Former and Current Range of Florida Panthers in the Southeastern United States



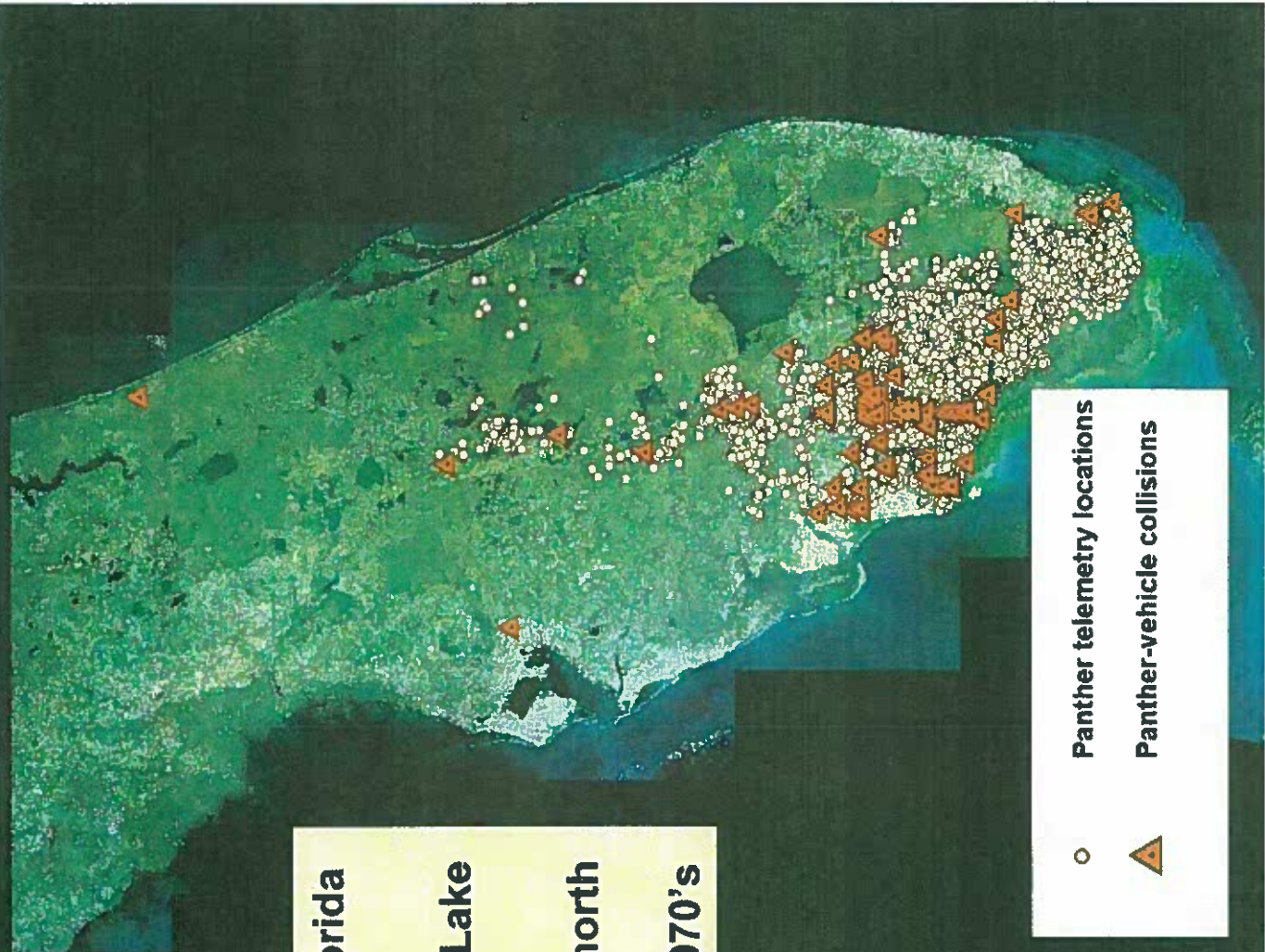
Population size estimated to be around 100 panthers

Former Range 
Current Range 

Panthers occur throughout the Florida peninsula

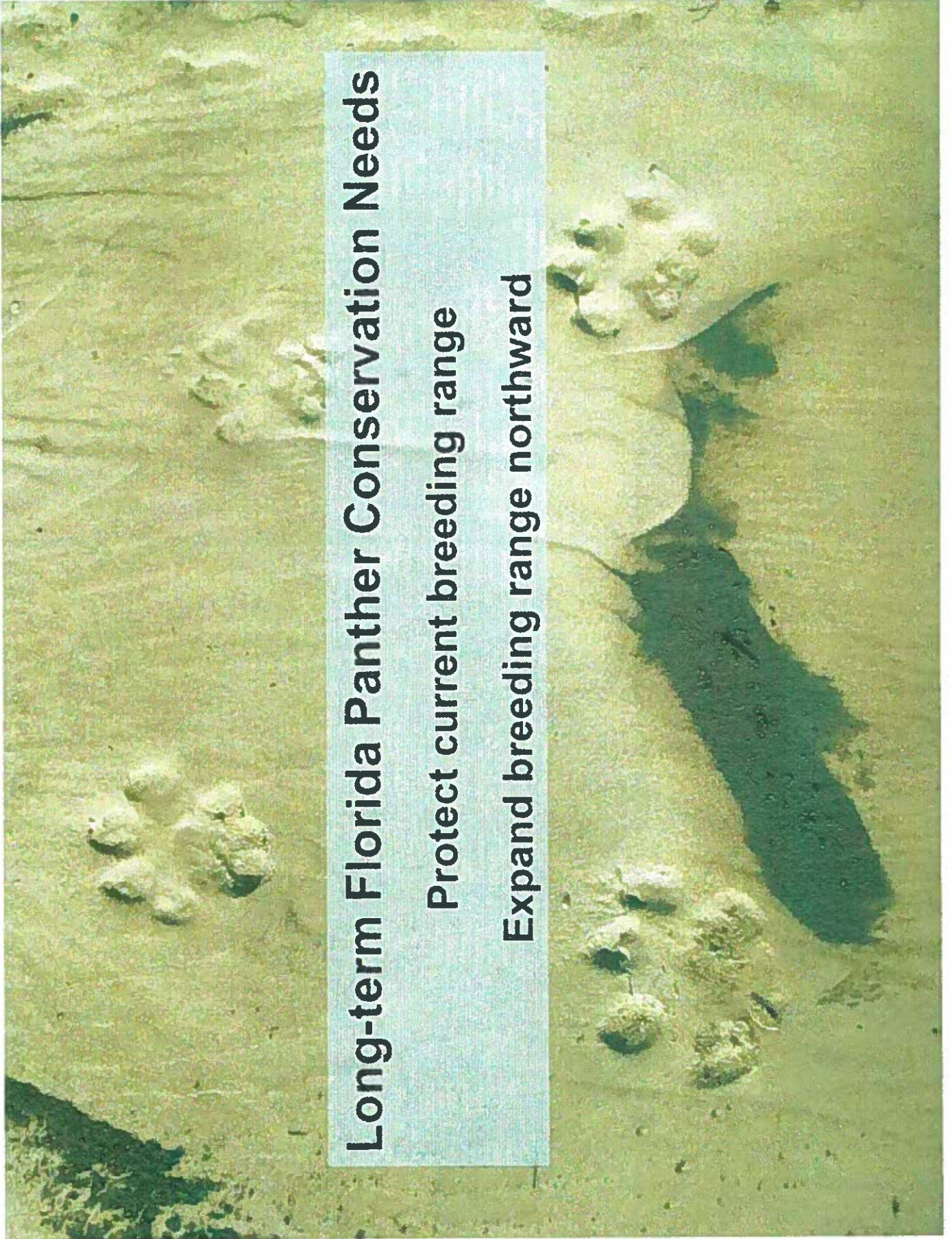
Most panthers are found south of Lake Okeechobee

No females have been confirmed north of Lake Okeechobee and the Caloosahatchee River since the 1970's



○ Panther telemetry locations

▲ Panther-vehicle collisions

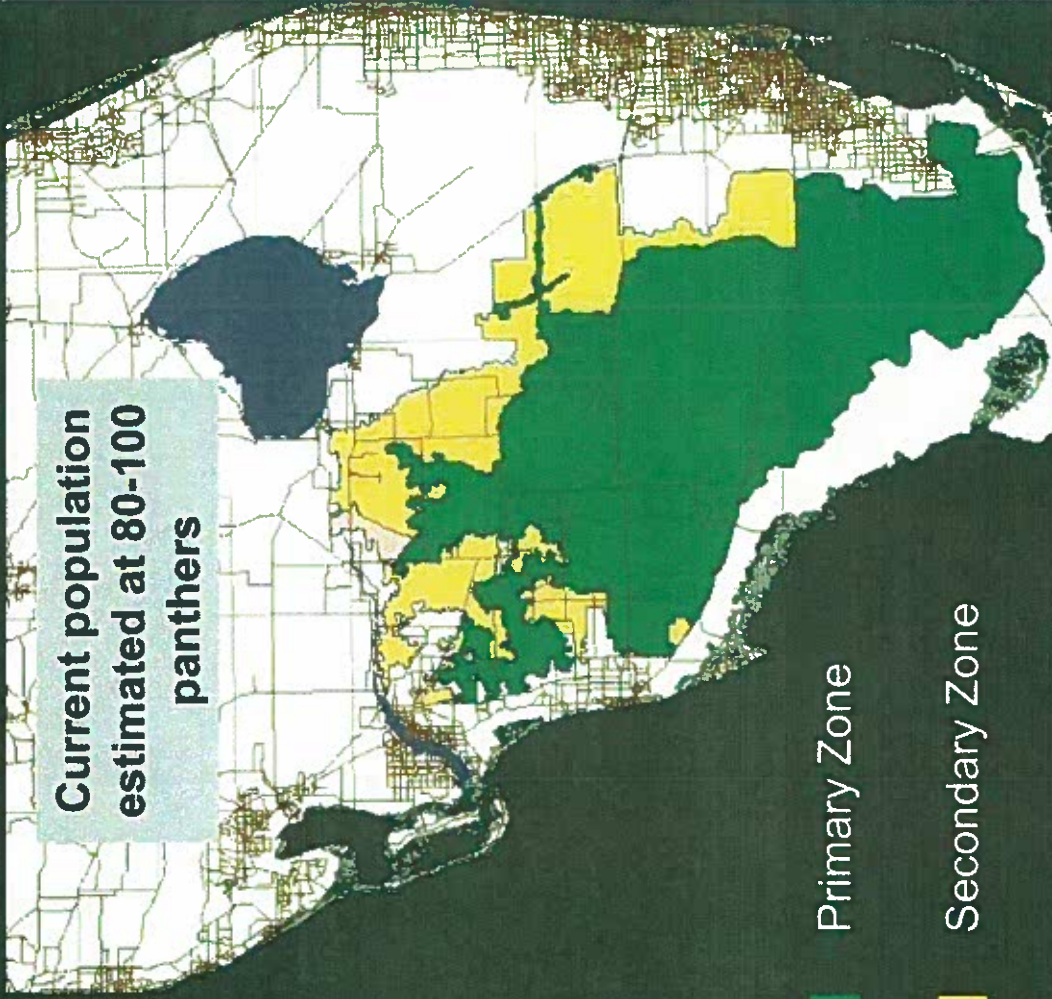


Long-term Florida Panther Conservation Needs

Protect current breeding range

Expand breeding range northward

Current population
estimated at 80-100
panthers



Primary Zone

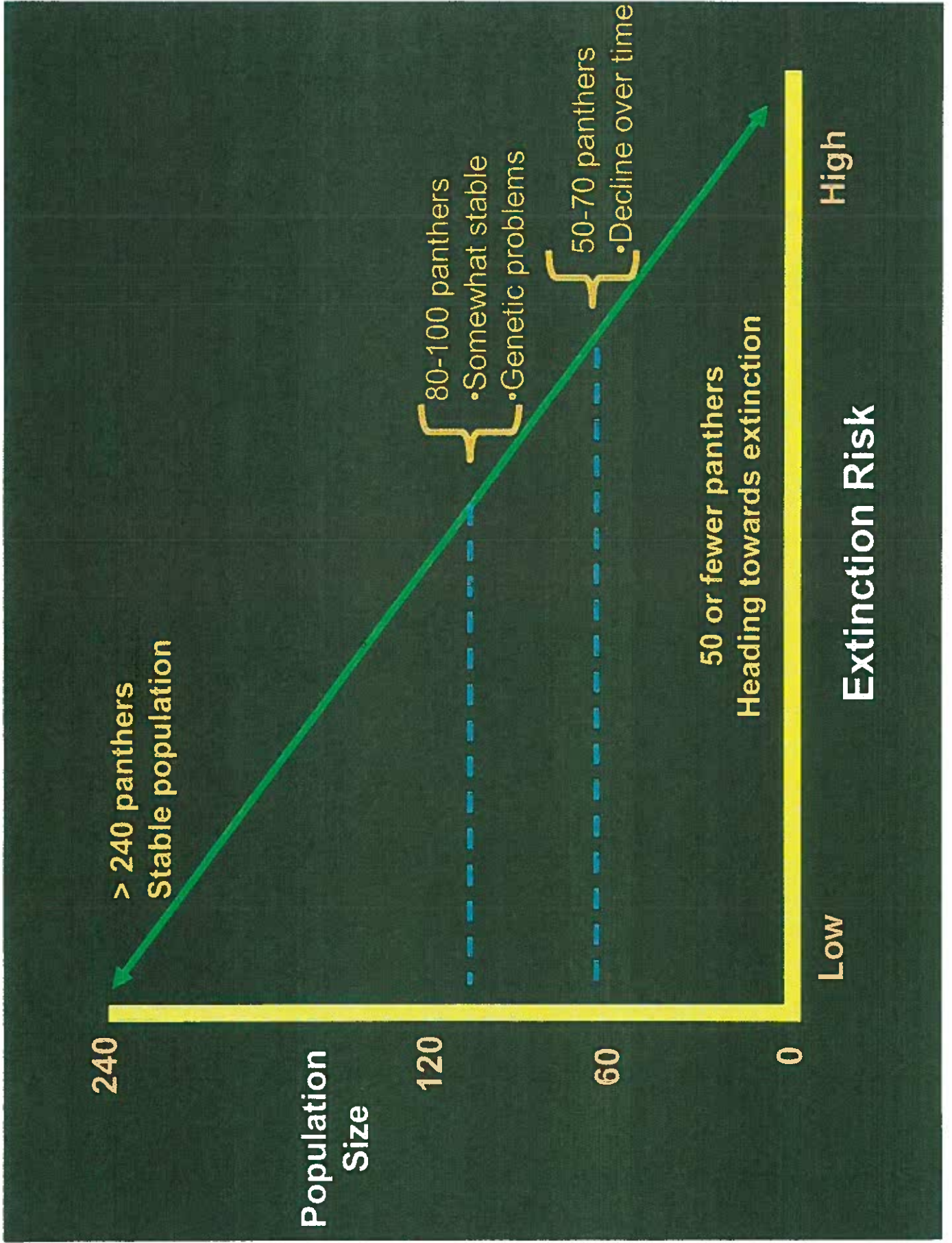
Secondary Zone

Dispersal Zone



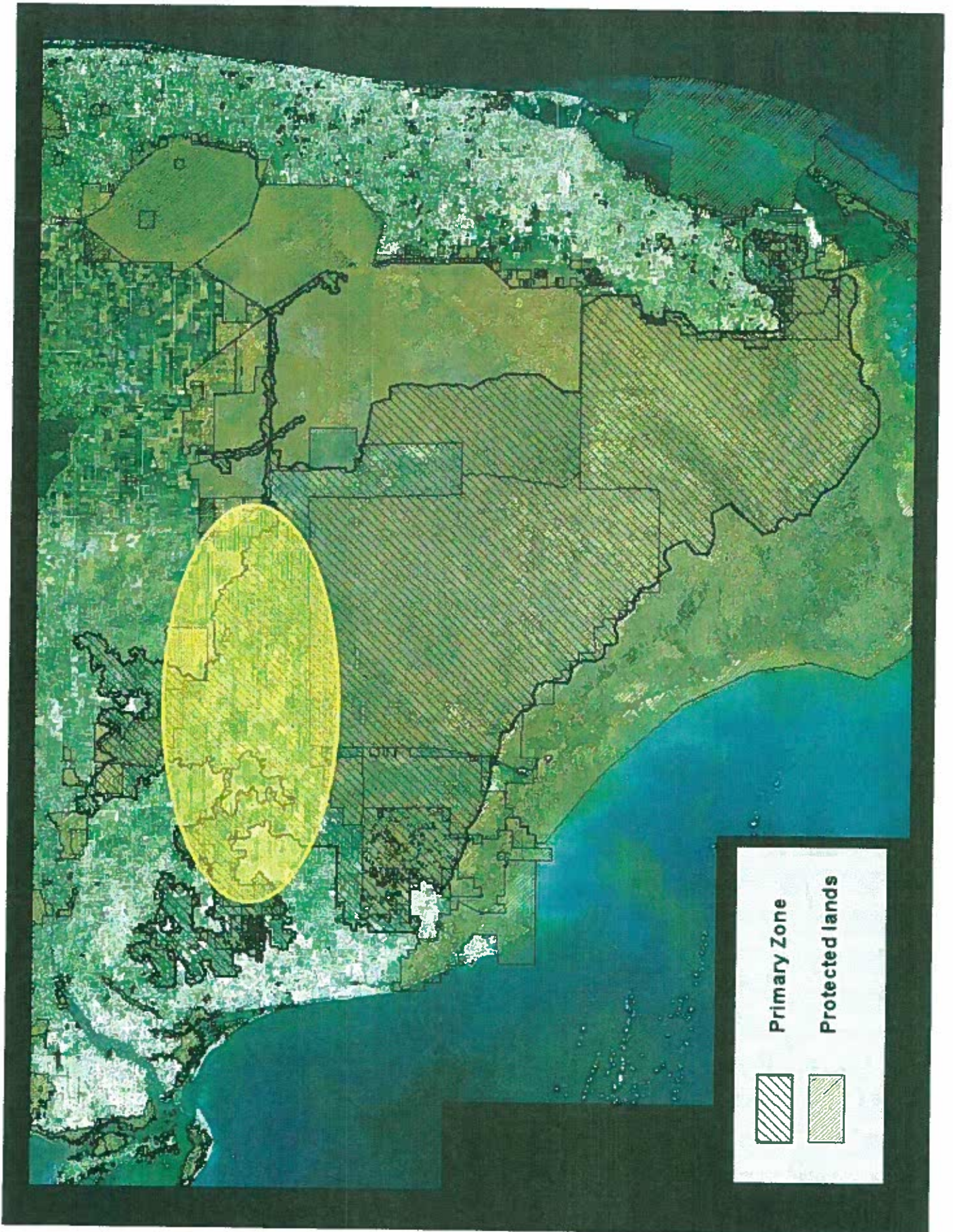
Kautz et al. 2006. How much is
enough? Landscape scale
conservation for the Florida
panther. *Biological
Conservation* 130: 118-133.

417





418



419



Collier RLSP covers nearly 200,000 acres

Plan created by private landowners and local environmental NGO's

Current plan under a 5 year review and additional panther needs are being considered

Collier Rural Lands Stewardship

	Flowway
	Habitat
	Lake Trafford
	Open
	Water Retention
	Protected lands

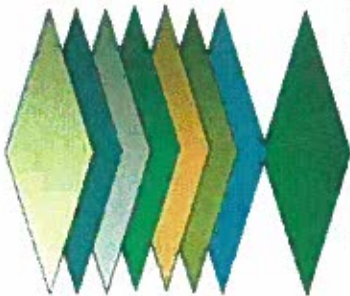
Ave Maria

Early French, Spanish & British Land Grants

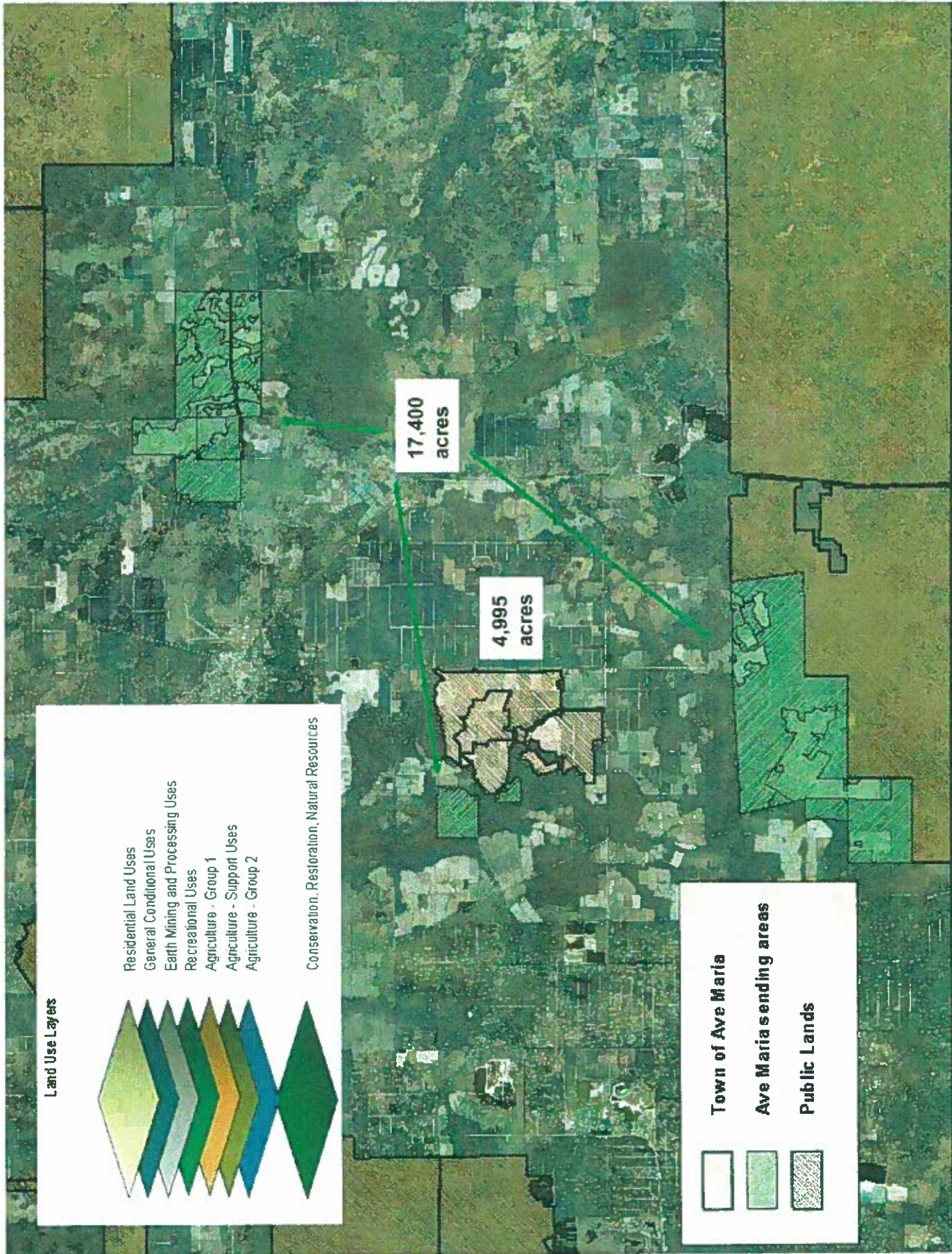


Pulte
CONSTRUCTION

Land Use Layers



- Residential Land Uses
- General Conditional Uses
- Earth Mining and Processing Uses
- Recreational Uses
- Agriculture - Group 1
- Agriculture - Support Uses
- Agriculture - Group 2
- Conservation, Restoration, Natural Resources

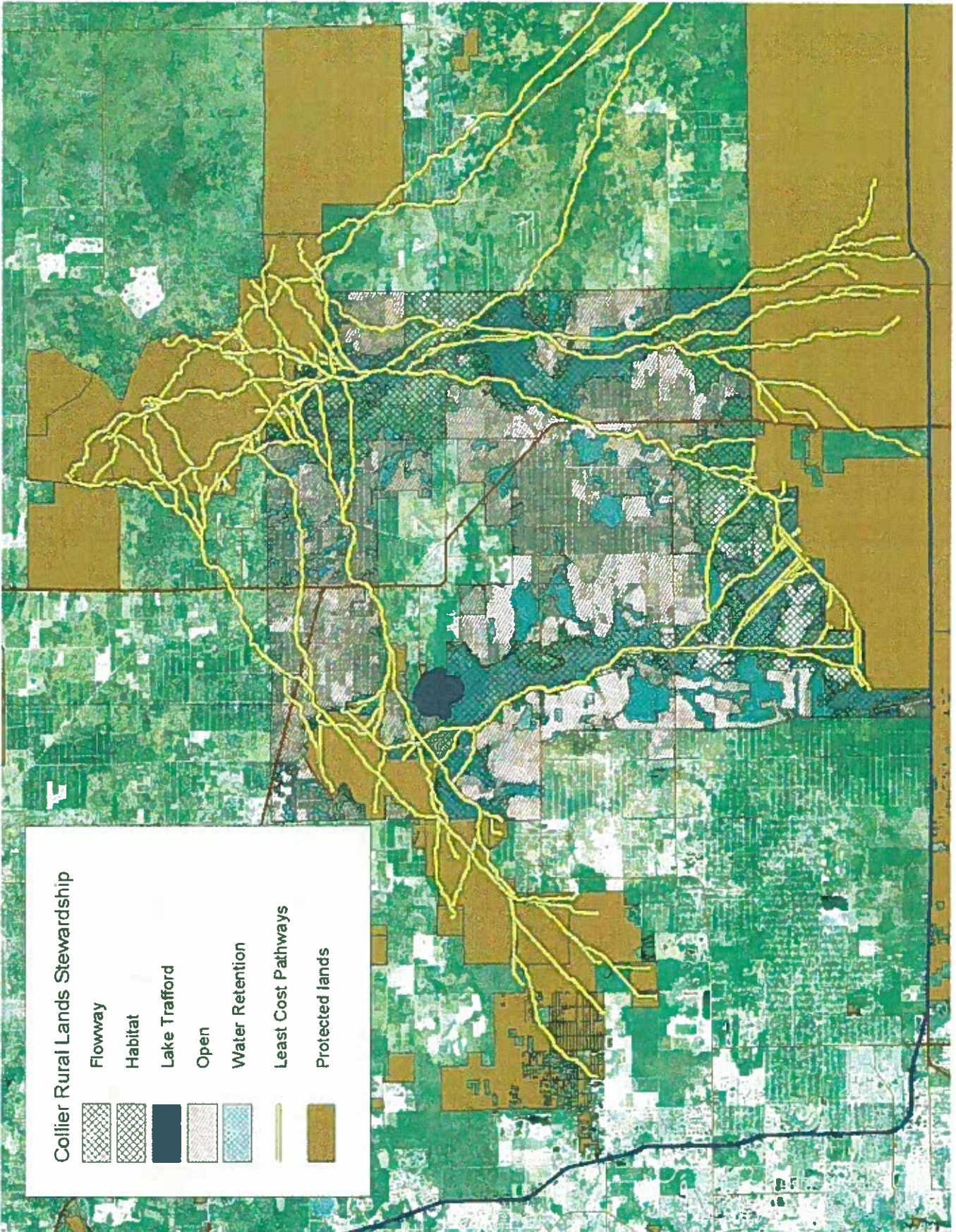


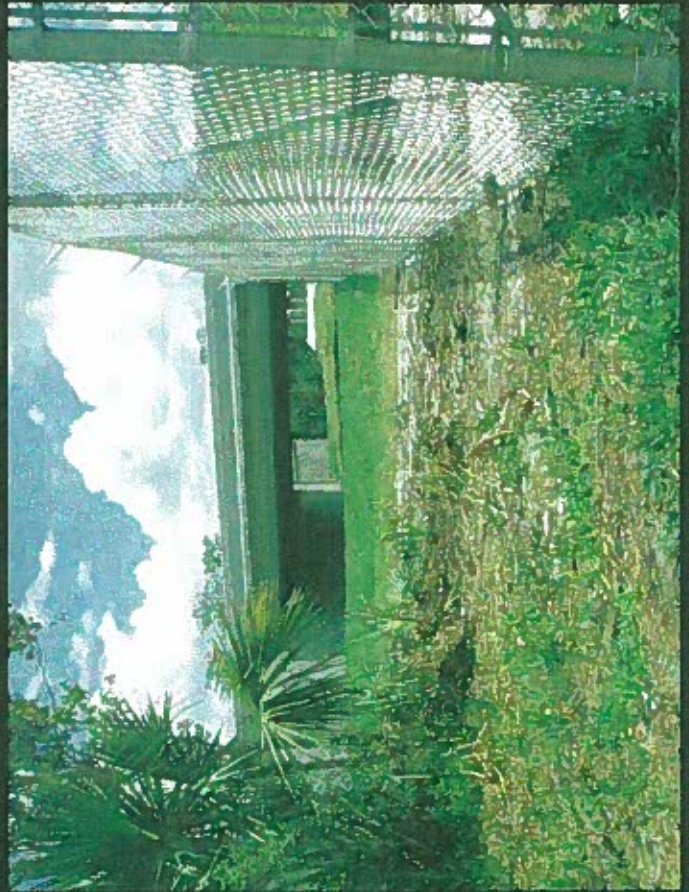
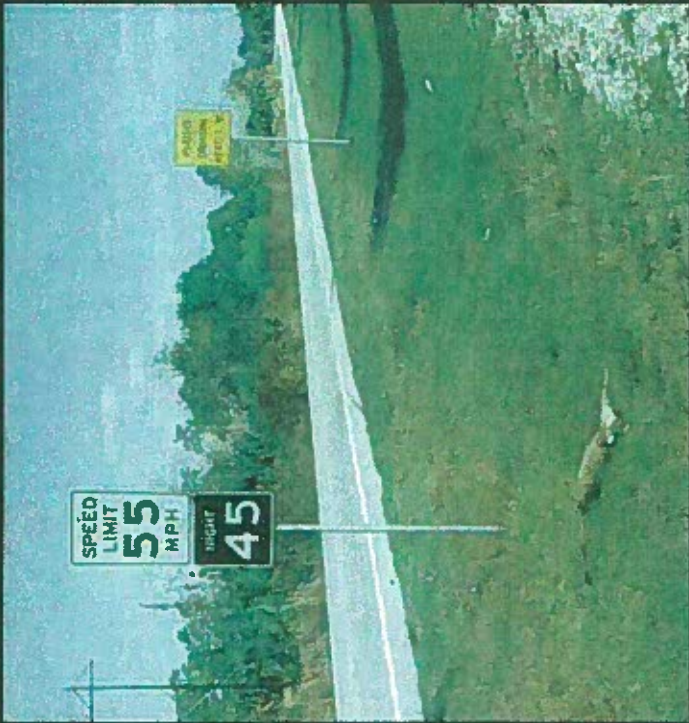
Town of Ave Maria

Ave Maria sending areas

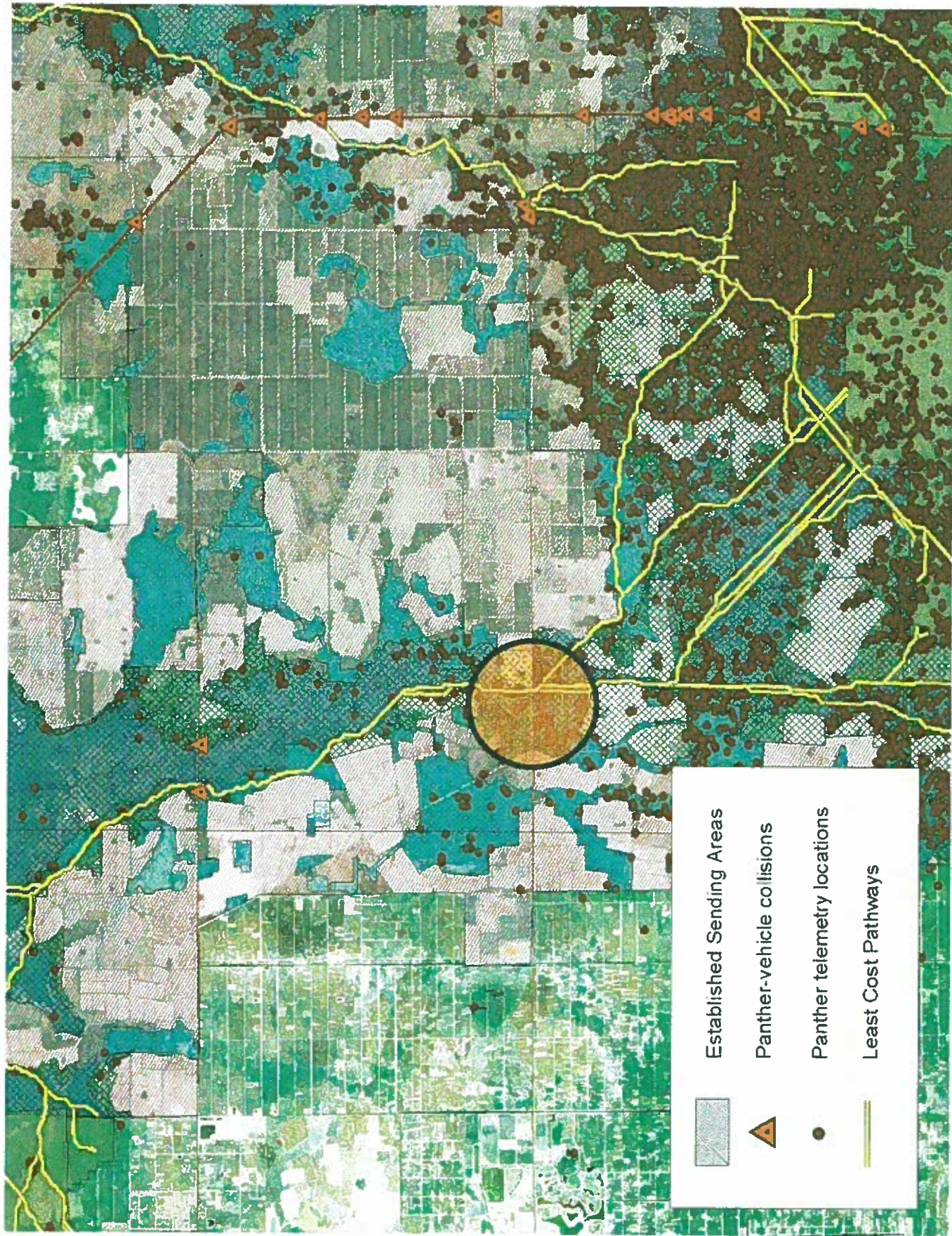
Public Lands

422

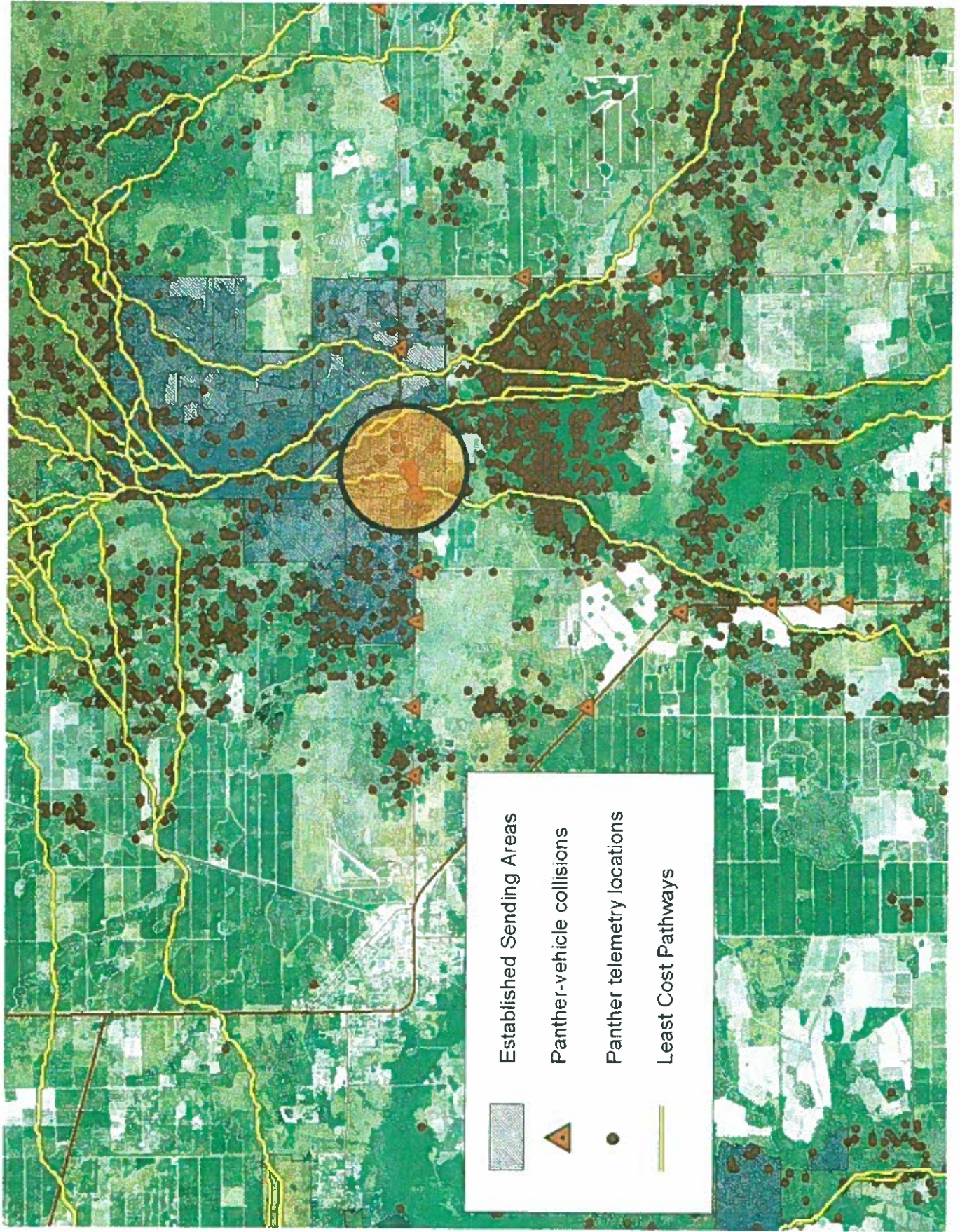




424

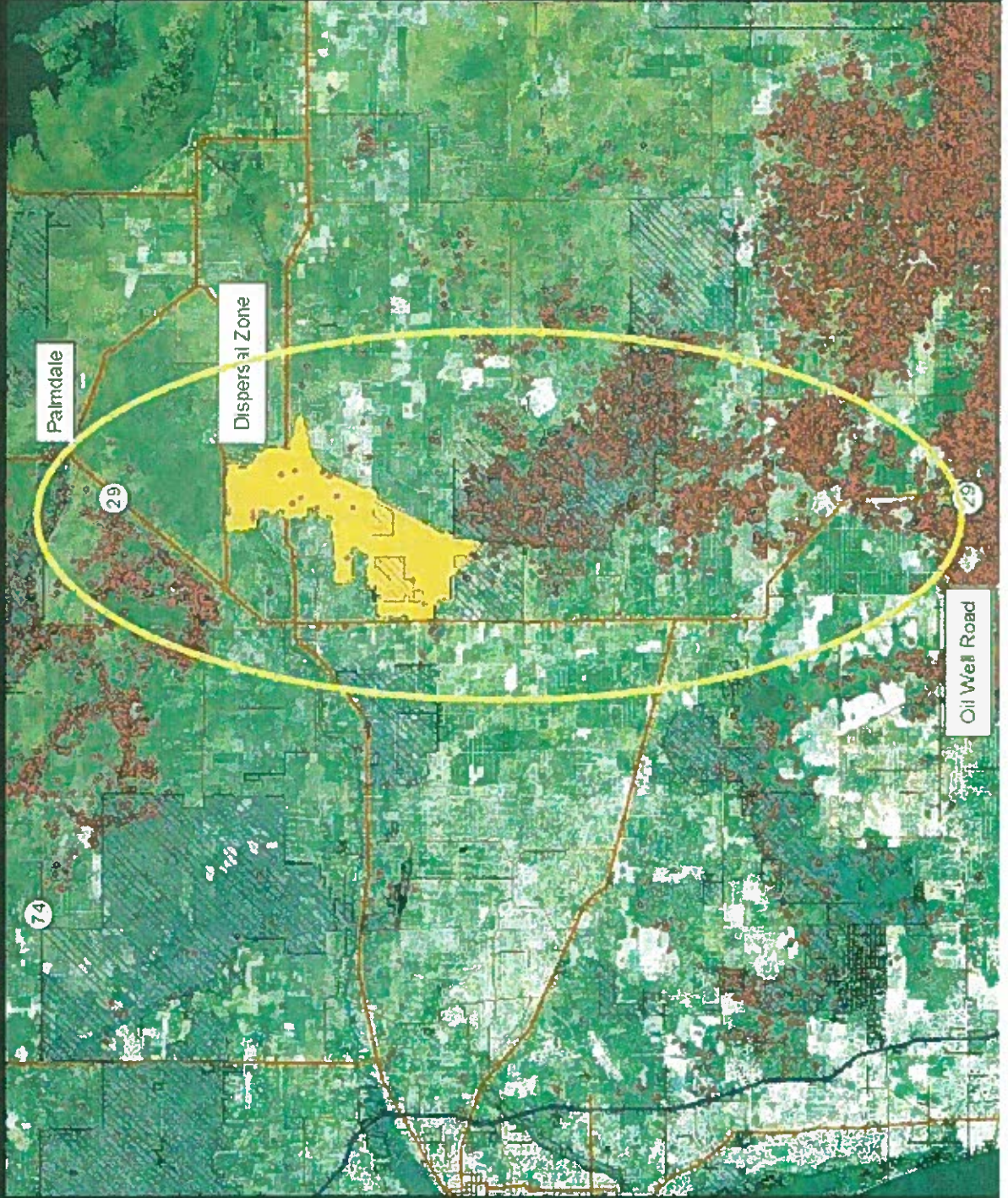


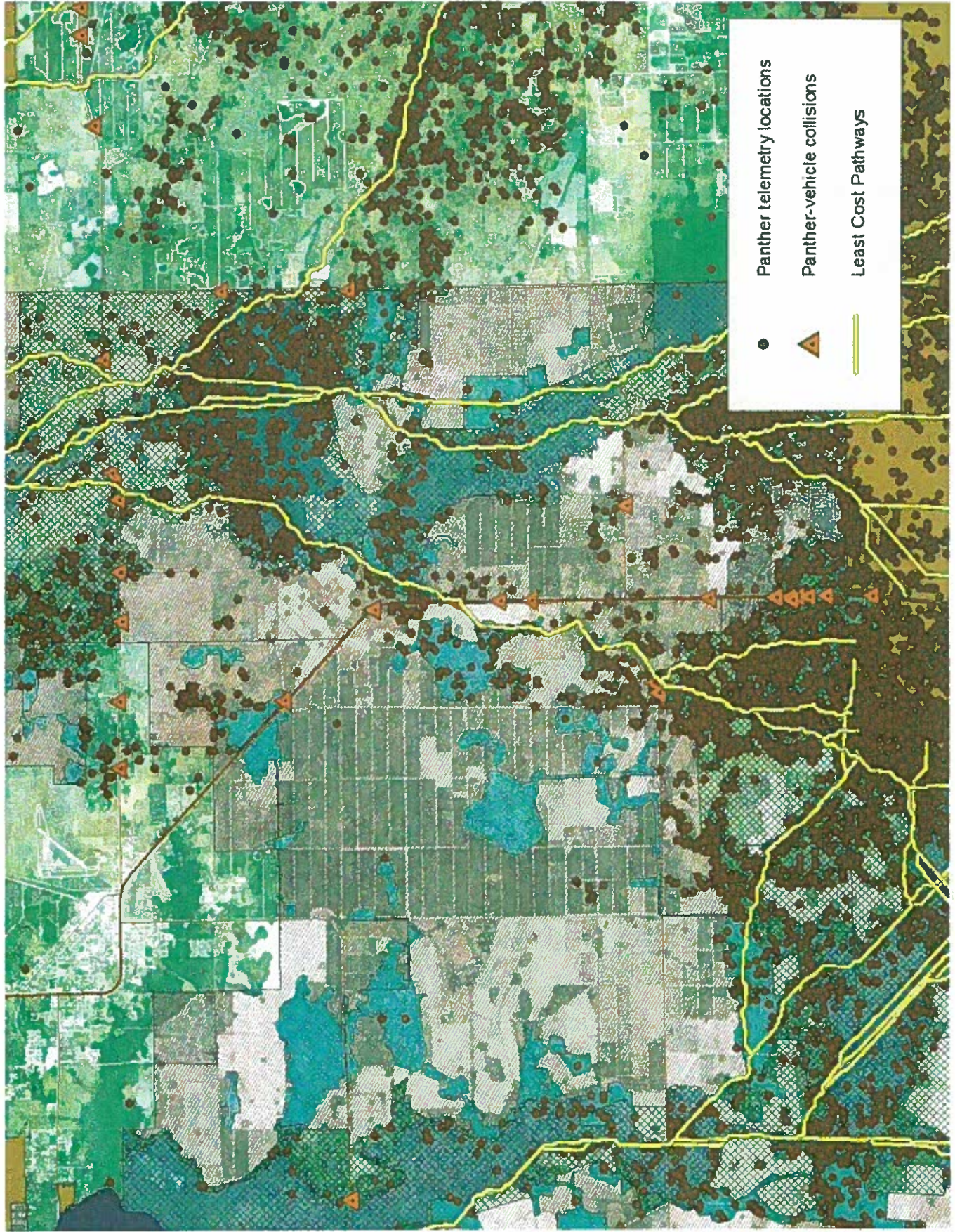
425



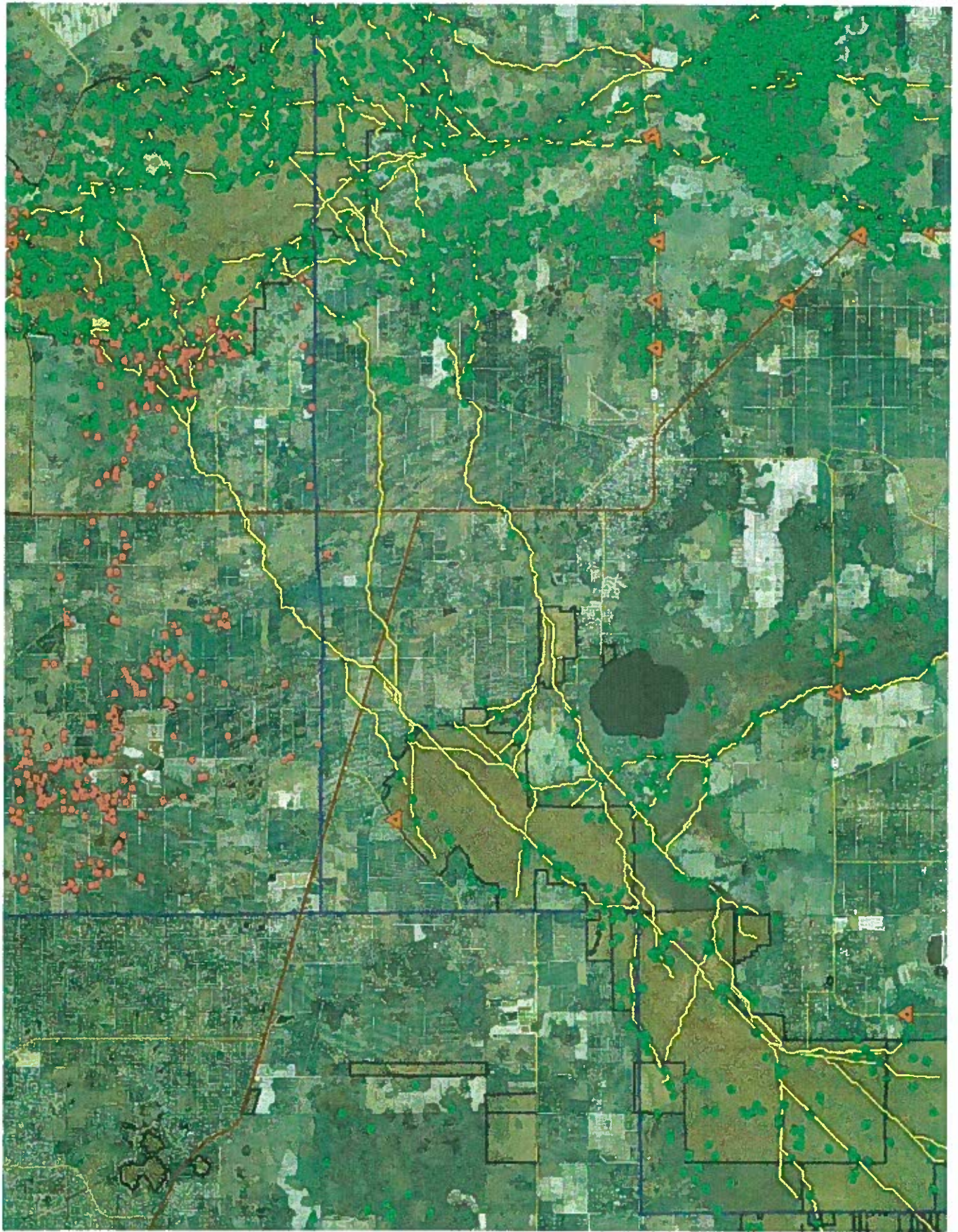
426

Planning is underway to add new lanes to the 2-lane SR 29 from Oil Well Road to Palmdale. FWC and FWS have consulted with FDOT about the need for wildlife crossings and fencing.

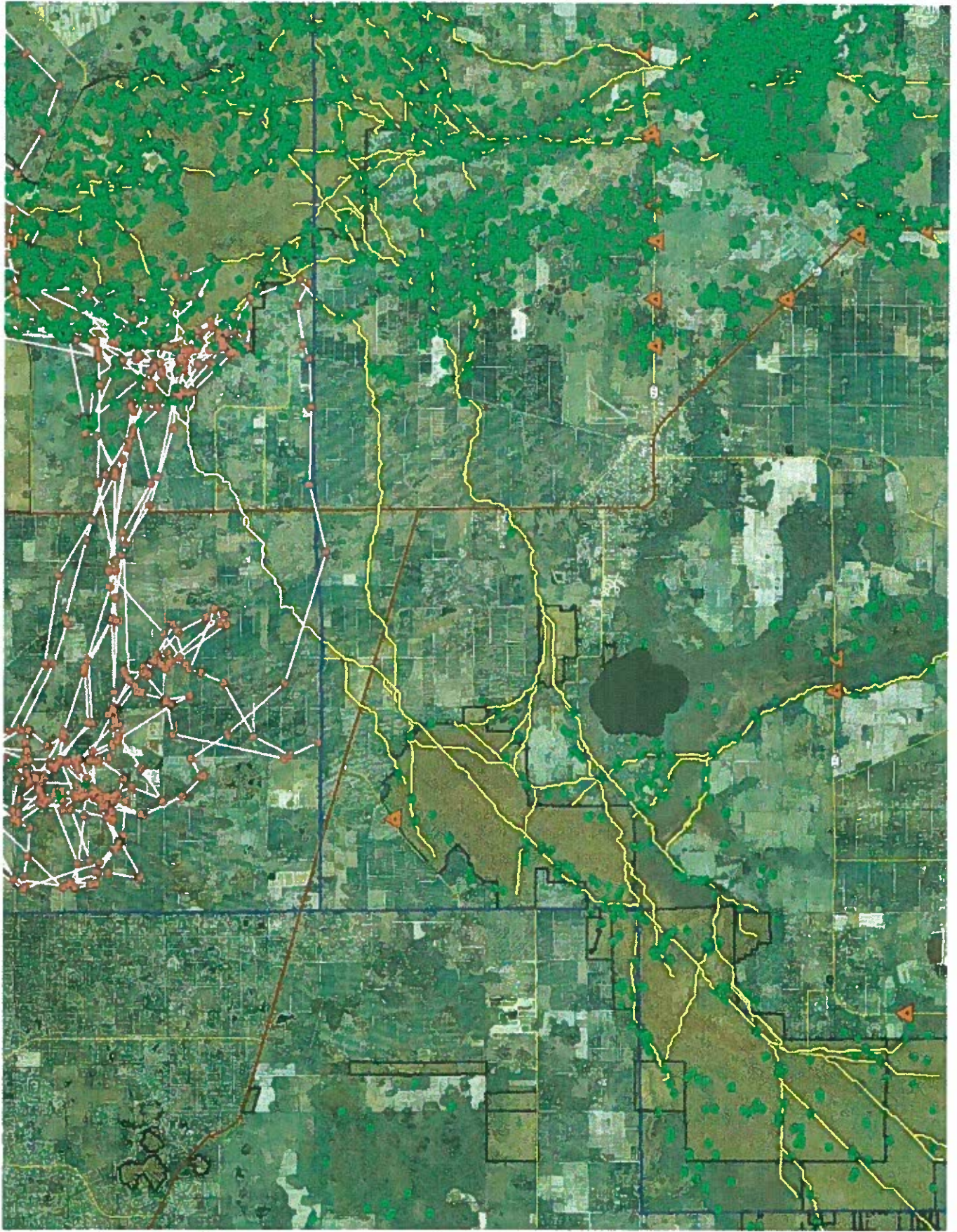




428



429

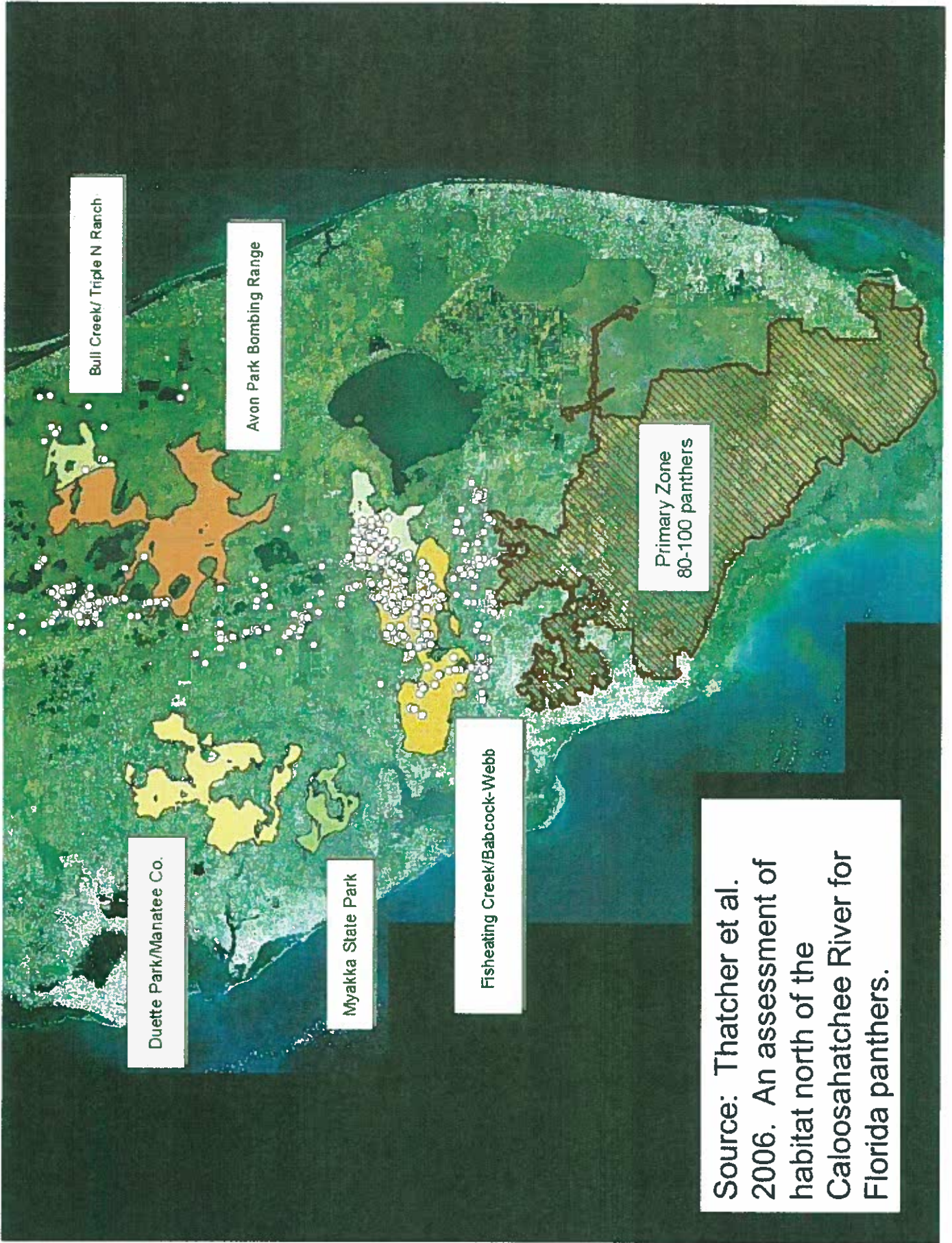


430

**The USFWS
commissioned a study to
map potential panther
habitat north of the
Caloosahatchee River.**

**The draft Recovery Plan
concludes that a population needs
240 panthers to be viable without
intervention**

**Primary Zone
80-100 panthers**

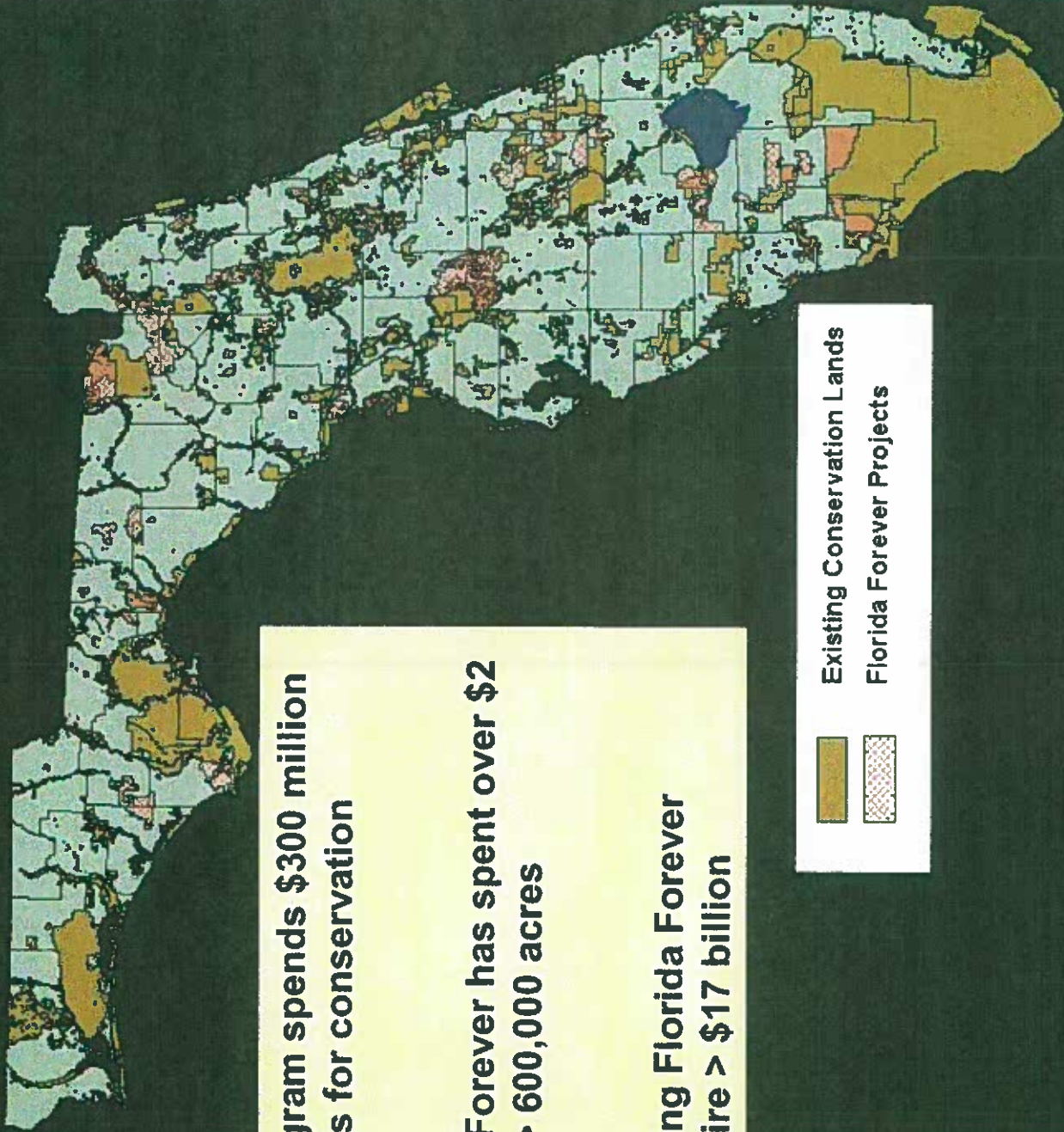


Source: Thatcher et al. 2006. An assessment of habitat north of the Caloosahatchee River for Florida panthers.

Florida Forever program spends \$300 million per year to buy lands for conservation

Since 2001, Florida Forever has spent over \$2 billion to purchase > 600,000 acres

Purchase of remaining Florida Forever projects would require > \$17 billion



Existing Conservation Lands
Florida Forever Projects

Florida' Rural Lands Stewardship Act - 2001

Restoration and maintenance of rural land's economic value

Control of urban sprawl

Protection of ecosystems, habitats and natural resources

Promote rural economic activity

Maintain viability of Florida agriculture

Protect Florida's rural character

Participation in a RLSP is voluntary and is credit based

Transfer of credits from stewardship areas to areas that can be developed

Stewardship areas are protected with permanent easements